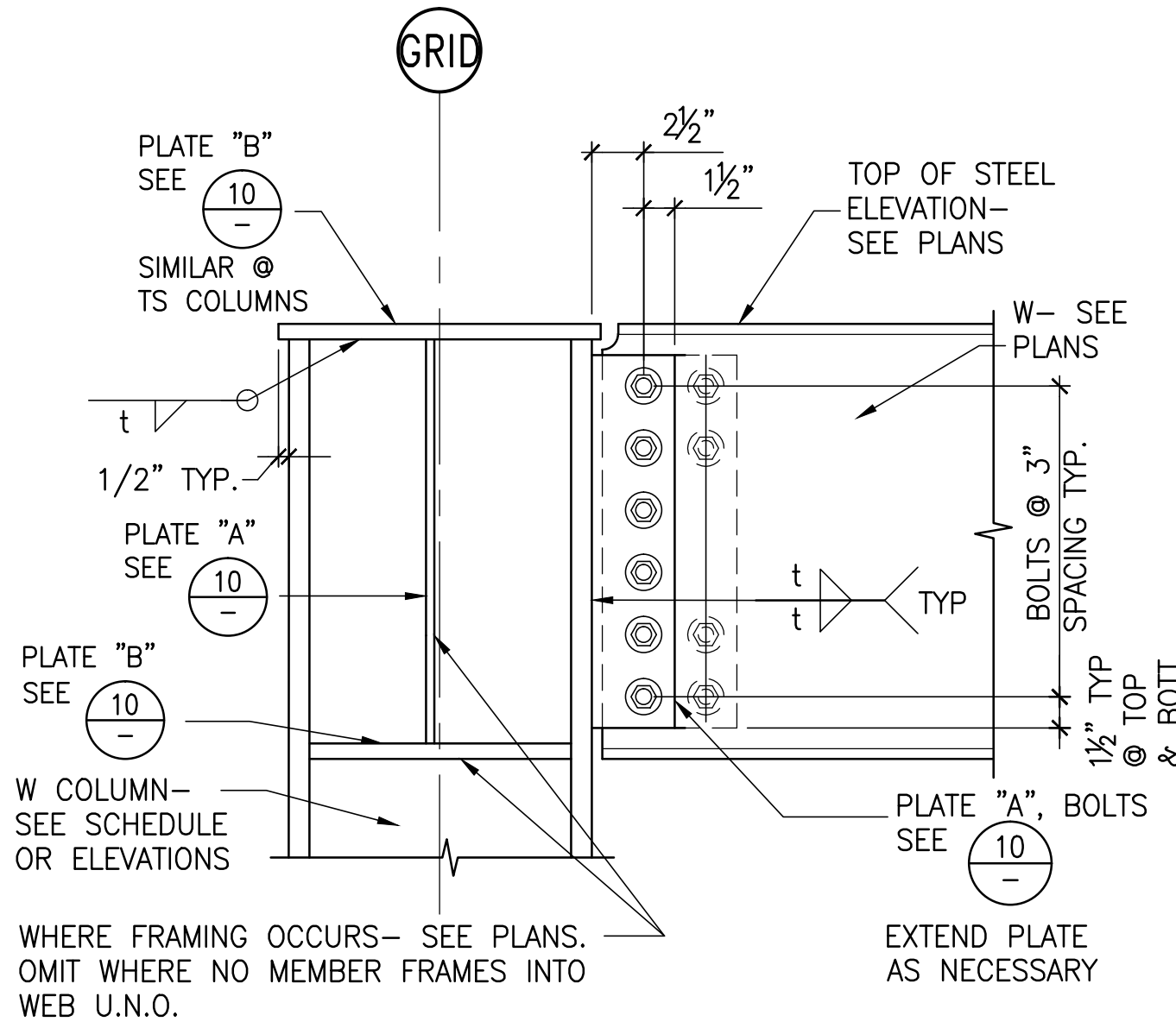


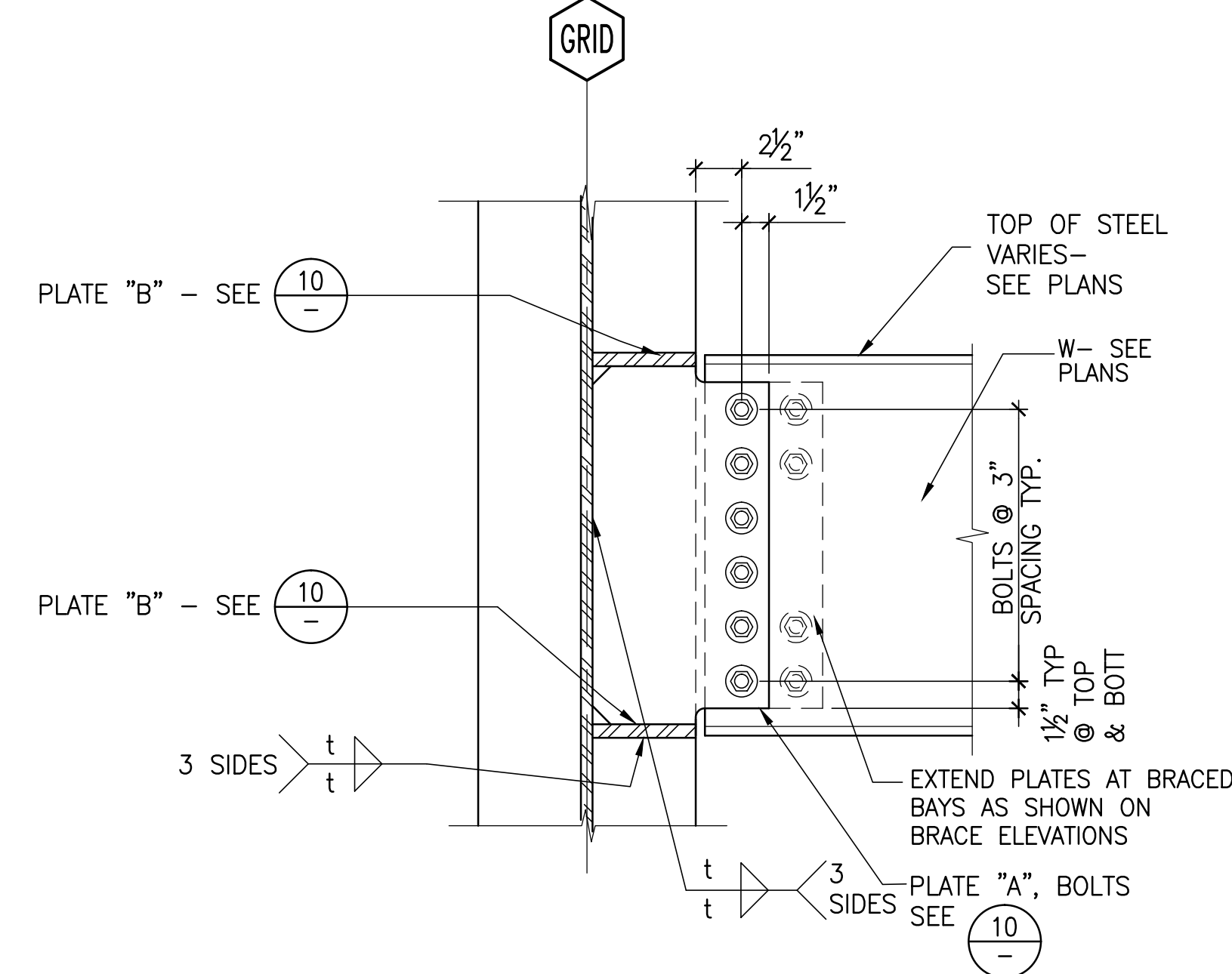
BEAM/ GIRDER SIZE	PLATE "A" THICKNESS (IN.)	PLATE "B" THICKNESS (IN.)	WELD t (IN.)	NO. OF 5/8" A325-X BOLTS (1)	NOTES
W10	5/16	1/2	1/4	2	SPACE BOLTS 6"
W12	5/16	1/2	1/4	3	
W14	3/8	1/2 (2)	1/4	3	
W16	3/8	1/2 (2)	1/4	4	
W18	3/8	1/2 (2)	1/4	4	
W21	1/2	1/2 (2)	5/16	5	
W24	1/2	1/2	5/16	6	

NOTES:

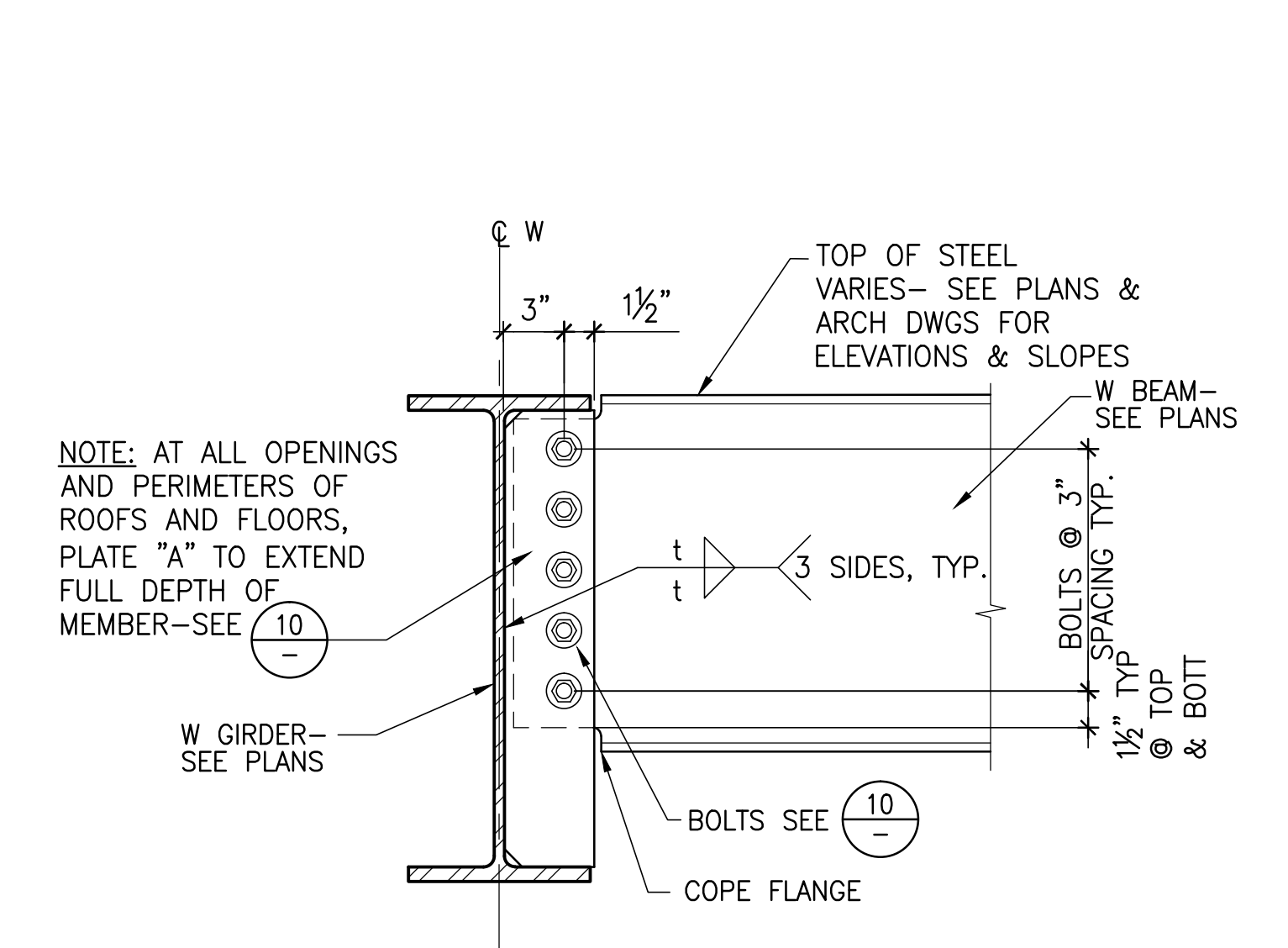
1. TIGHTEN ALL BOLTS- SEE GENERAL NOTES
2. USE 3/4" PLATE "B" AT ROOF AND FLOOR MOMENT CONNECTIONS



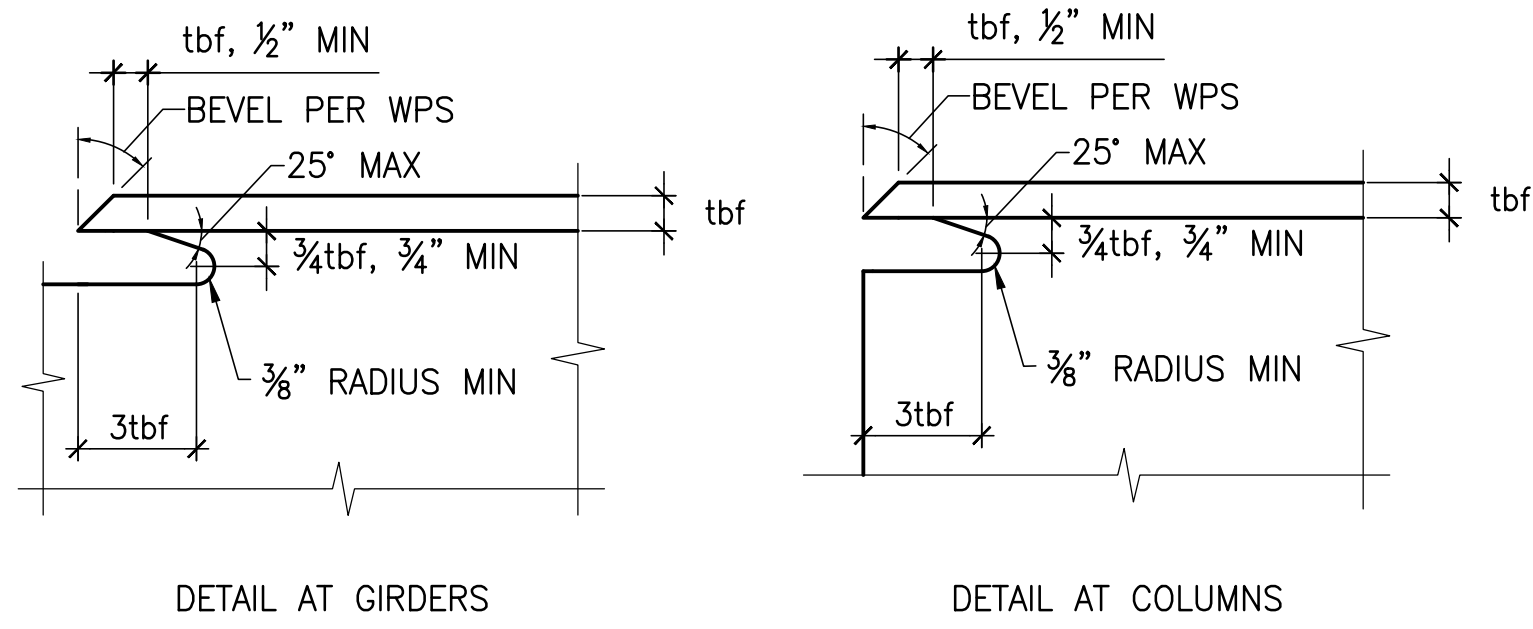
7 BEAM OR GIRDER CONNECTION AT ROOFS



4 BEAM OR GIRDER TO COLUMN WEB AT FLOORS

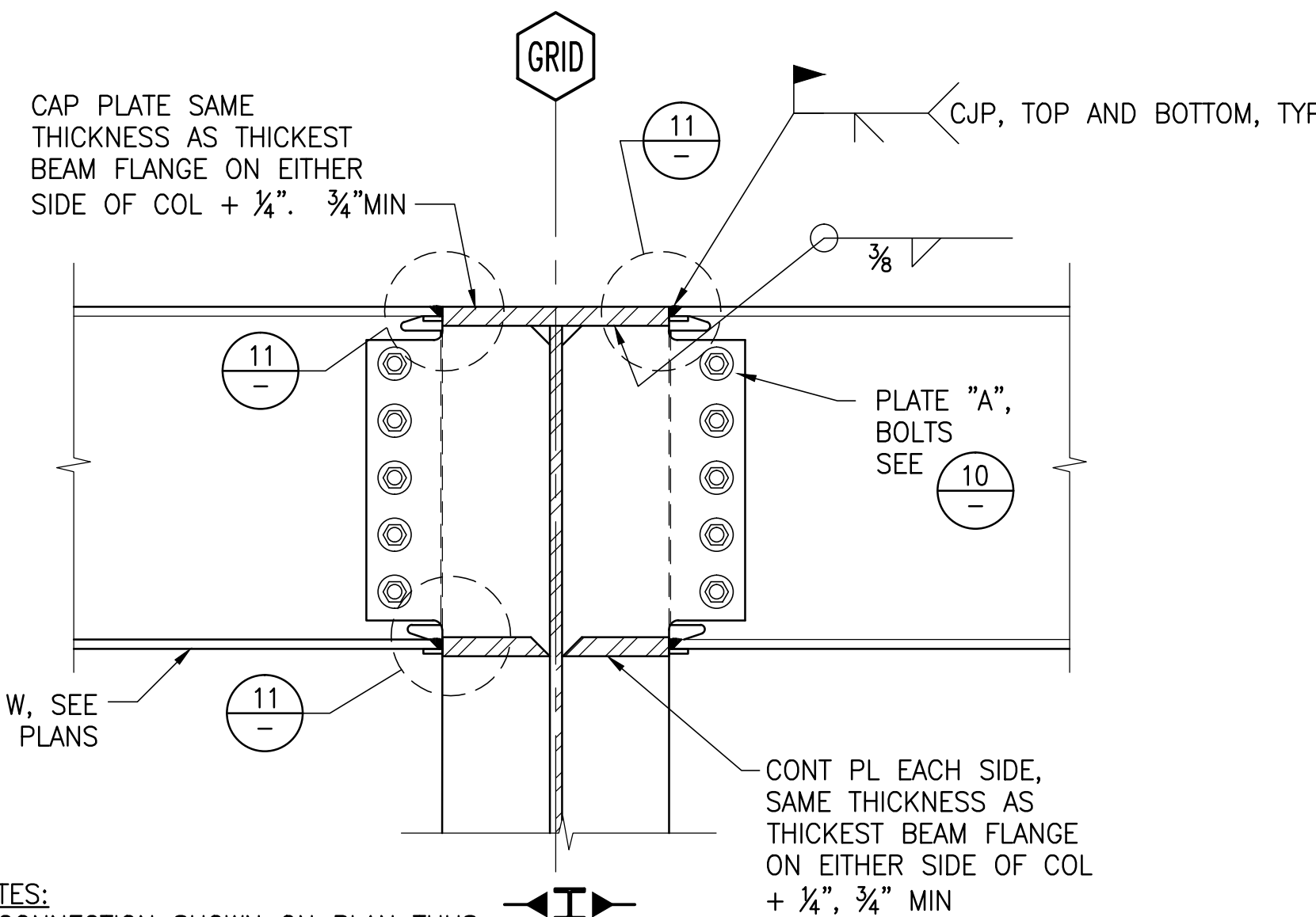


1 BEAM TO GIRDER AT PERIMETER AT FLOORS AND ROOFS



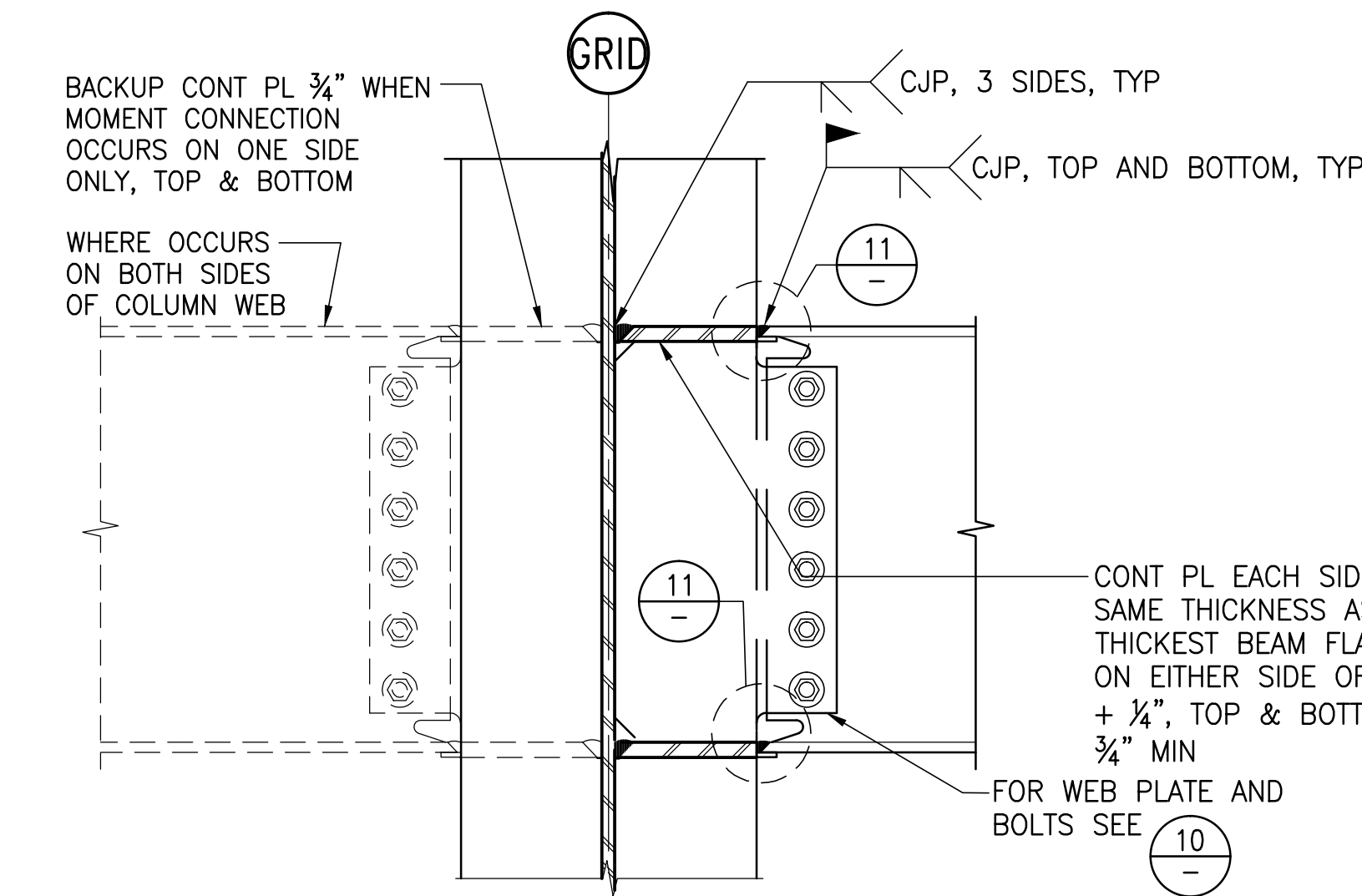
NOTES:

1. tb represents the beam flange thickness.
2. SURFACE ROUGHNESS OF ACCESS HOLE SHALL BE NOT MORE THAN 500 μIN.



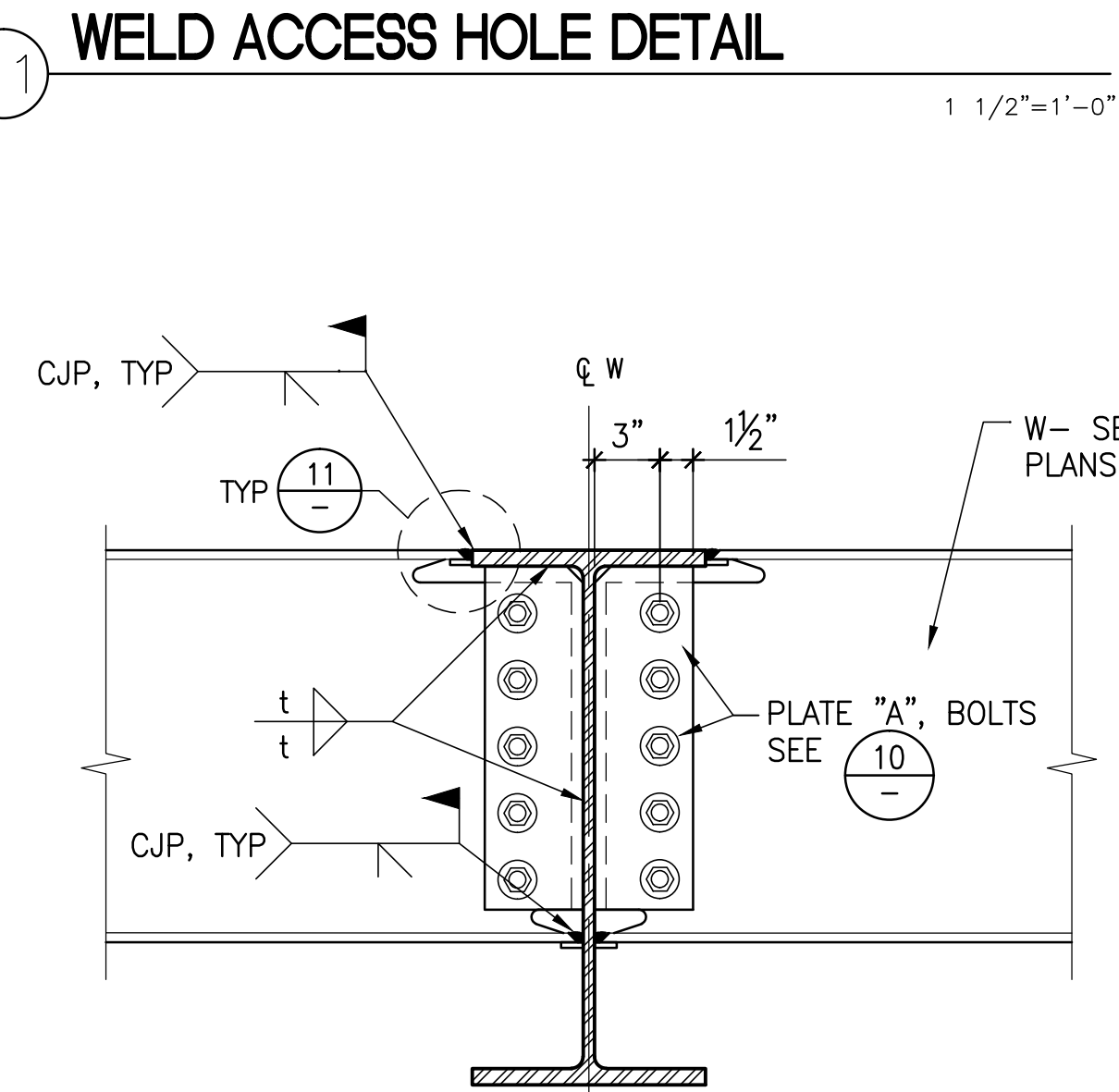
NOTES:

1. CONNECTION SHOWN ON PLAN THUS:
2. REMOVE RUN-OFF TABS AT CJP WELD AND GRIND SMOOTH.
3. BACKING AT CJP WELD MAY REMAIN, U.N.O. BACKING THAT REMAINS SHALL BE ATTACHED TO COL FLANGE WITH CONT 5/16" FILLET WELD.

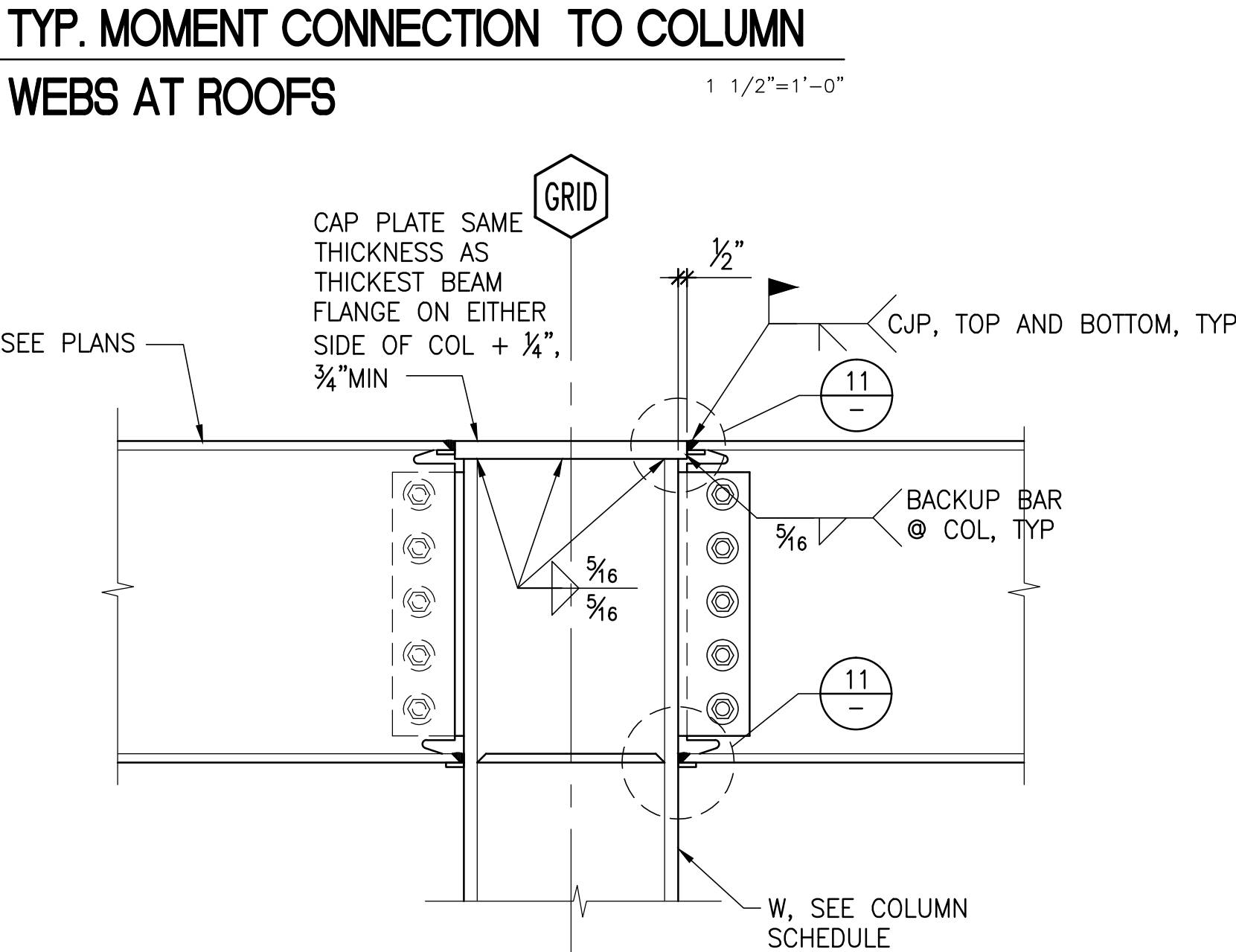


NOTES:

1. CONNECTION SHOWN ON PLAN THUS:
2. REMOVE RUN-OFF TABS AT CJP WELD AND GRIND SMOOTH.
3. BACKING AT CJP WELD MAY REMAIN, U.N.O. BACKING THAT REMAINS SHALL BE ATTACHED TO COL FLANGE WITH CONT 5/16" FILLET WELD.

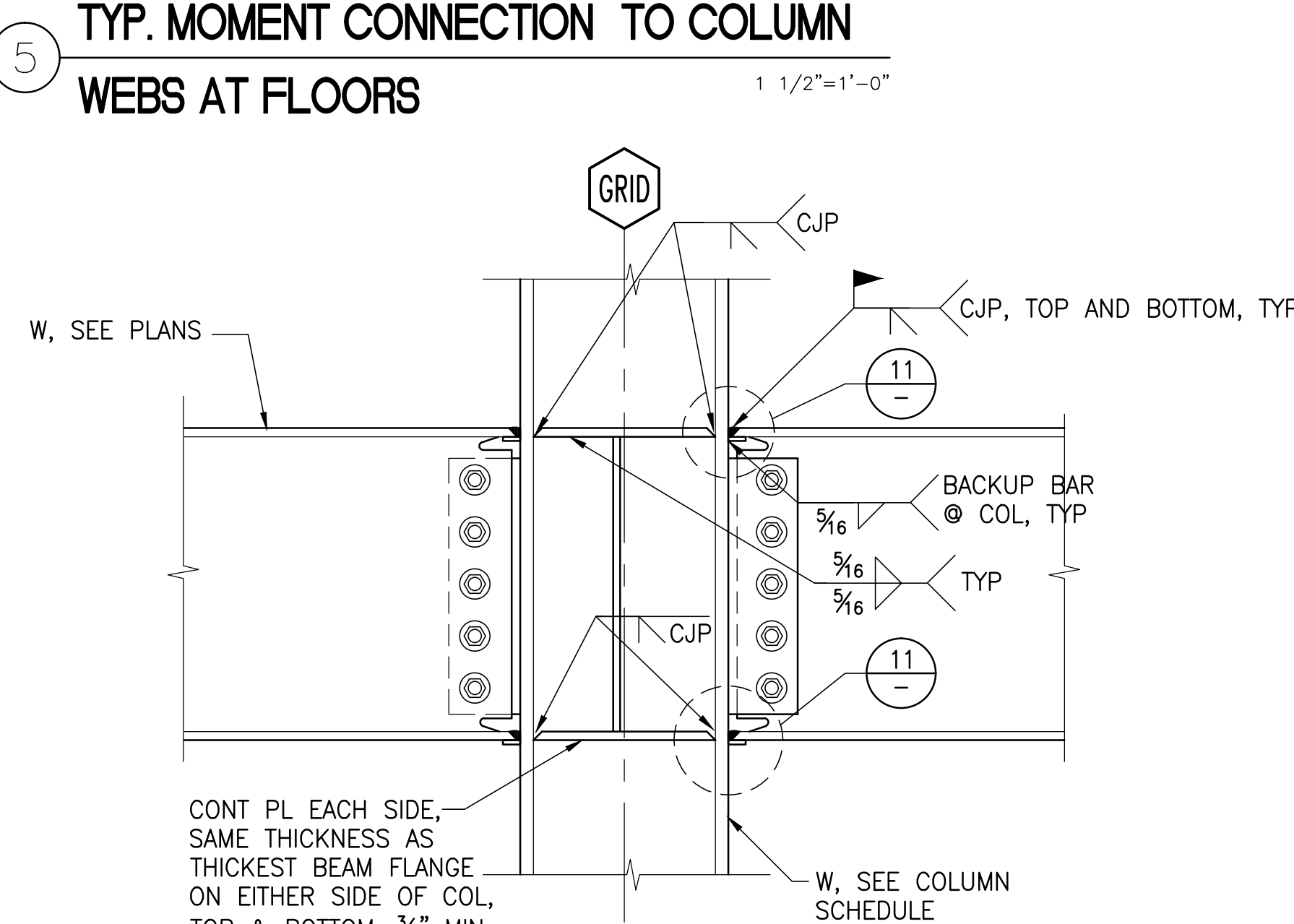


NOTE: CONNECTION SHOWN ON PLAN THUS:



NOTES:

1. CONNECTION SHOWN ON PLAN THUS:
2. REMOVE RUN-OFF TABS AT CJP WELD AND GRIND SMOOTH.
3. BACKING AT CJP WELD MAY REMAIN, U.N.O. BACKING THAT REMAINS SHALL BE ATTACHED TO COL FLANGE WITH CONT 5/16" FILLET WELD.



NOTES:

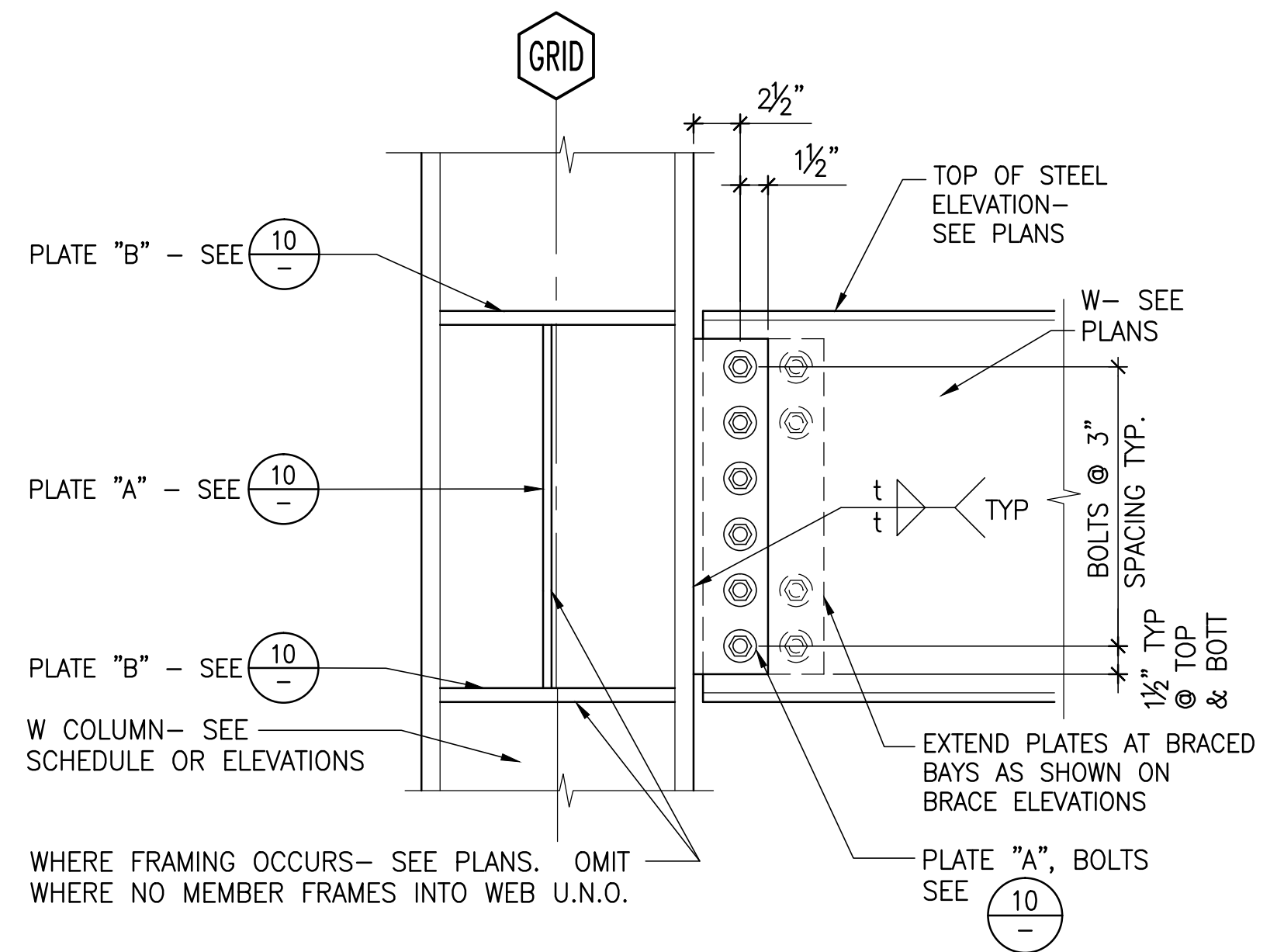
1. CONNECTION SHOWN ON PLAN THUS:
2. REMOVE RUN-OFF TABS AT CJP WELD AND GRIND SMOOTH.
3. BACKING AT CJP WELD MAY REMAIN, U.N.O. BACKING THAT REMAINS SHALL BE ATTACHED TO COL FLANGE WITH CONT 5/16" FILLET WELD.

12 TYP. MOMENT CONNECTION AT DIFFERENT DEPTH MEMBERS




9 TYP. MOMENT CONNECTION TO COLUMN FLANGES AT ROOFS

6 TYP. MOMENT CONNECTION TO COLUMN FLANGES AT FLOORS

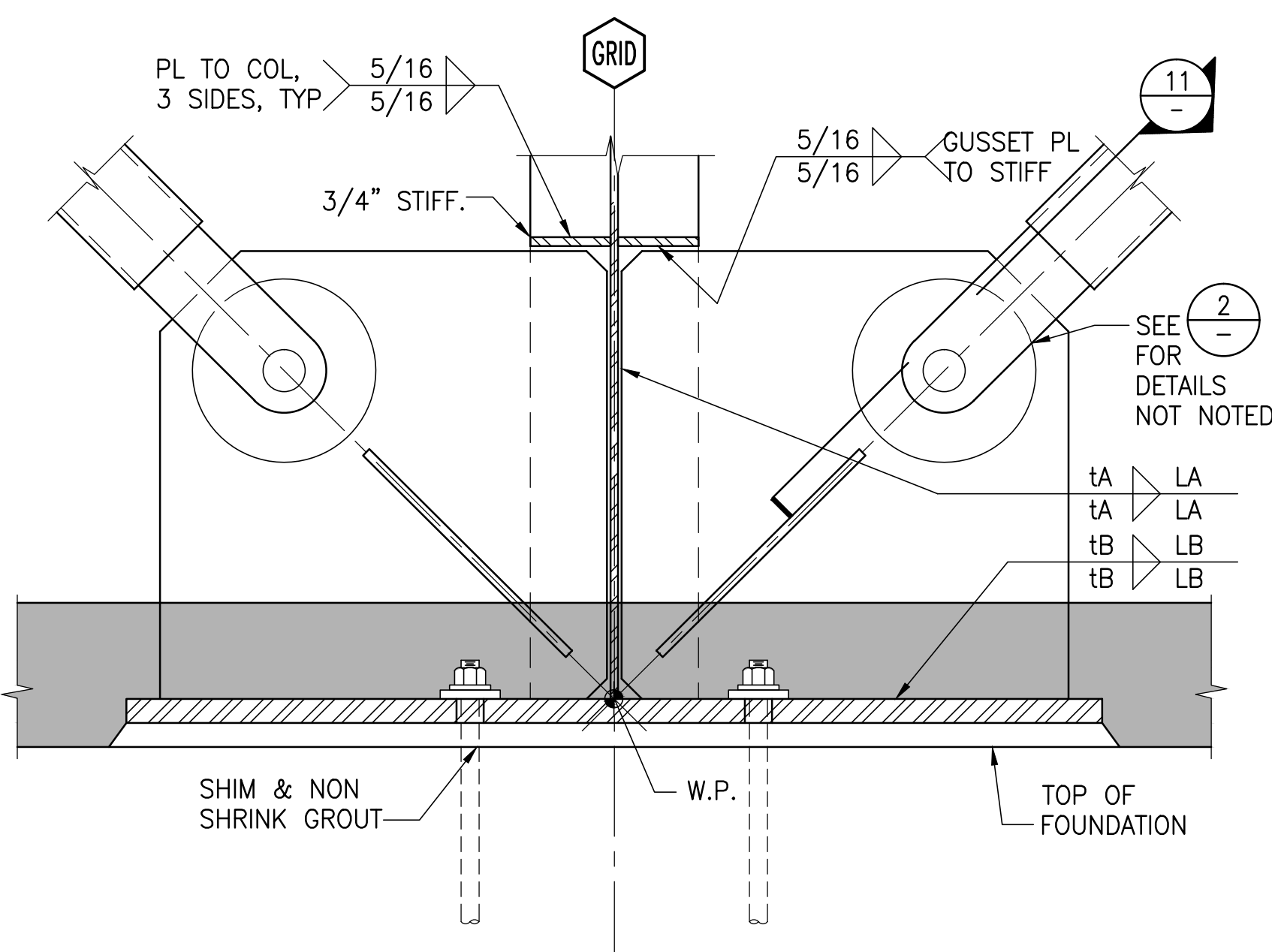
2 BEAM TO GIRDER - INTERIOR AT FLOORS AND ROOFS



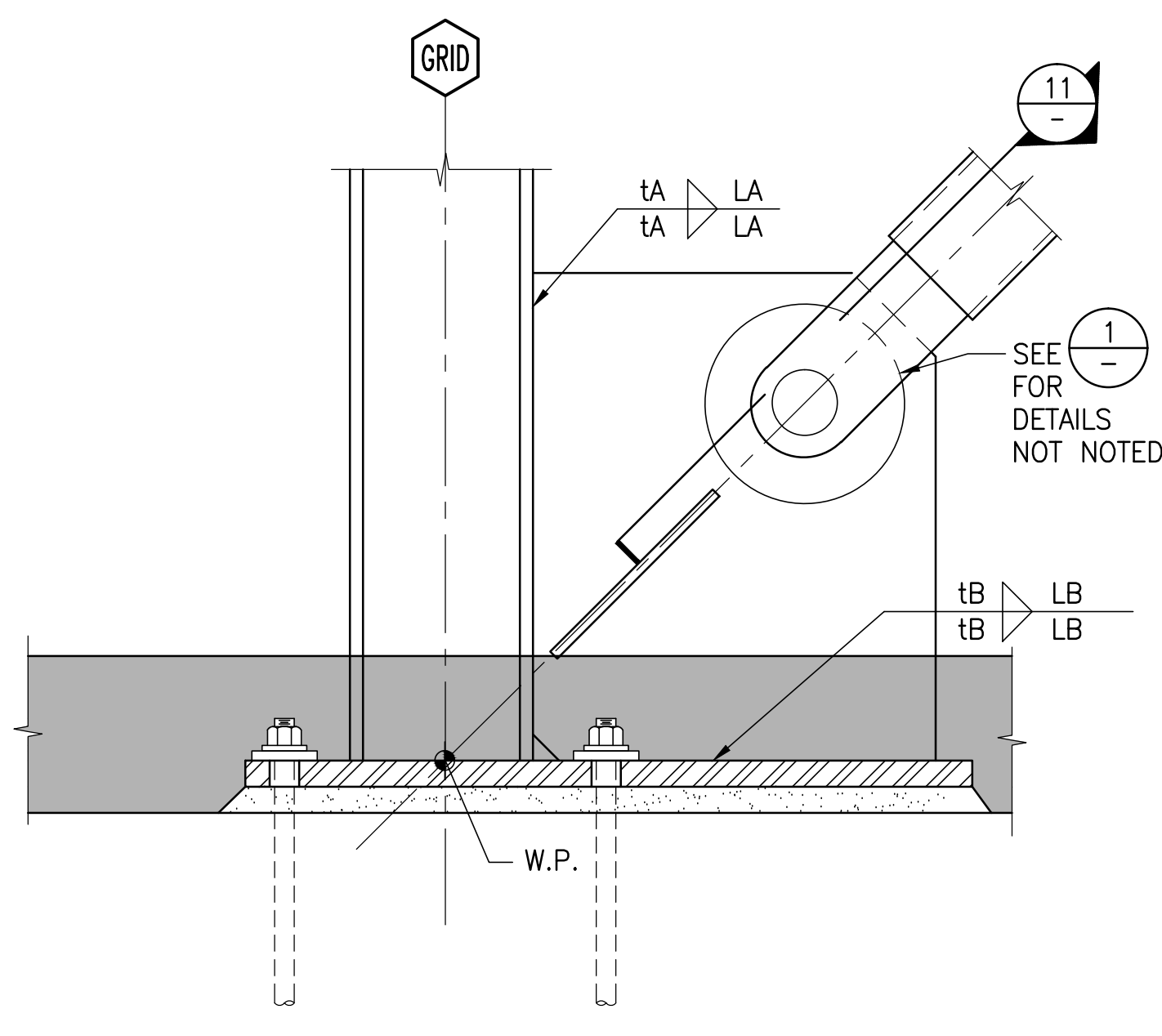
3 BEAM OR GIRDER TO COLUMN FLANGES AT FLOORS

CONSULTANTS:  Syska Hennessy Group, Inc. 425 California Street Suite 700 San Francisco, CA 94104 Tel: 415.288.9060 Fax: 415.835.0385 www.syska.com		ARCHITECT/ENGINEERS:  ENGINEERS ARCHITECTS ONE KAISER PLAZA SUITE 445 OAKLAND CALIFORNIA 94612 TEL 510.271.6701 FAX 510.271.6707 ©THE KPA GROUP 2014 KPA Project No. 582.00		Drawing Title TYPICAL FRAMING DETAILS Approved Project Director - VAPAHCS PLANNING AND ENGINEERING		Project Title ESTABLISH SUNNYVALE R AND D CAMPUS Location 1080 INNOVATION WAY, SUNNYVALE, CA 94085 Date 11/25/2014 Checked HMK Drawn KPA TEAM		Project Number 640-397 Building Number 1002 Drawing Number SS005 Dwg. of		Office of Construction and Facilities Management 	
--	--	--	--	--	--	---	--	--	--	---	--

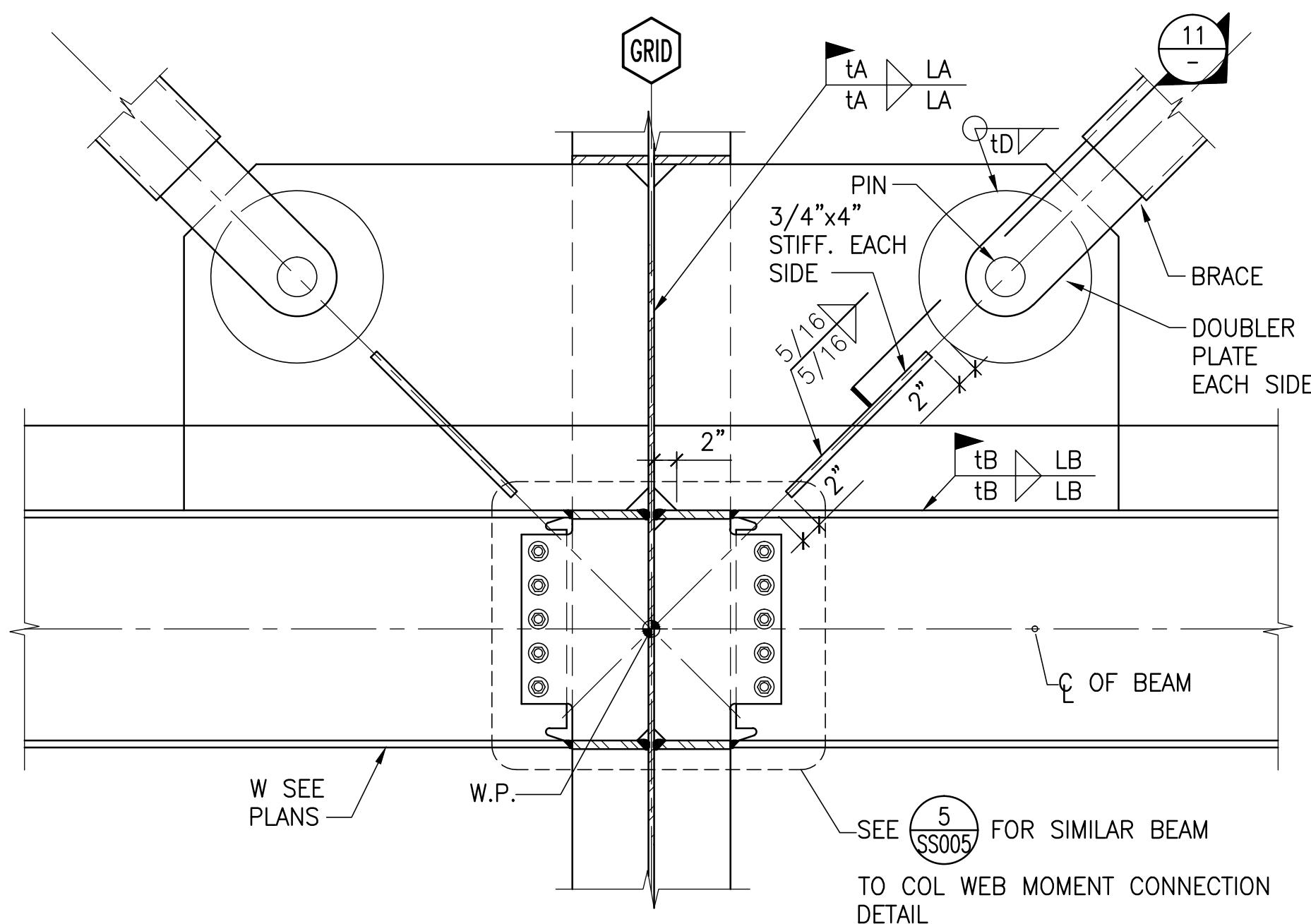
three inches = one foot
one and one half inches = one foot
one inch = one foot
three quarters inch = one foot
one half inch = one foot
three eighths inch = one foot
one quarter inch = one foot
one eighth inch = one foot



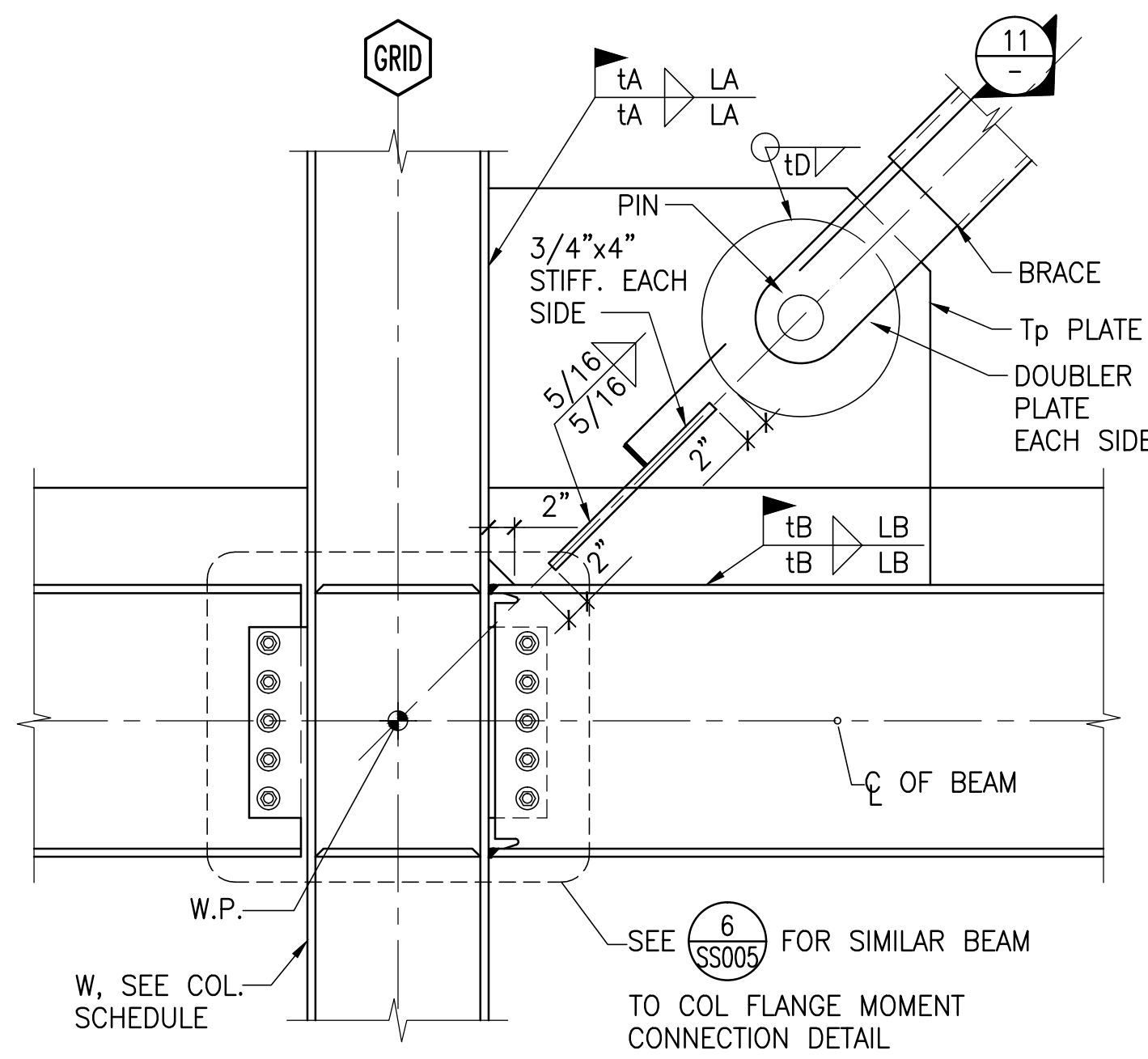
10 TYP. BRACE TO COLUMN WEB
CONNECTION AT BASE PLATE
1"=1'-0"



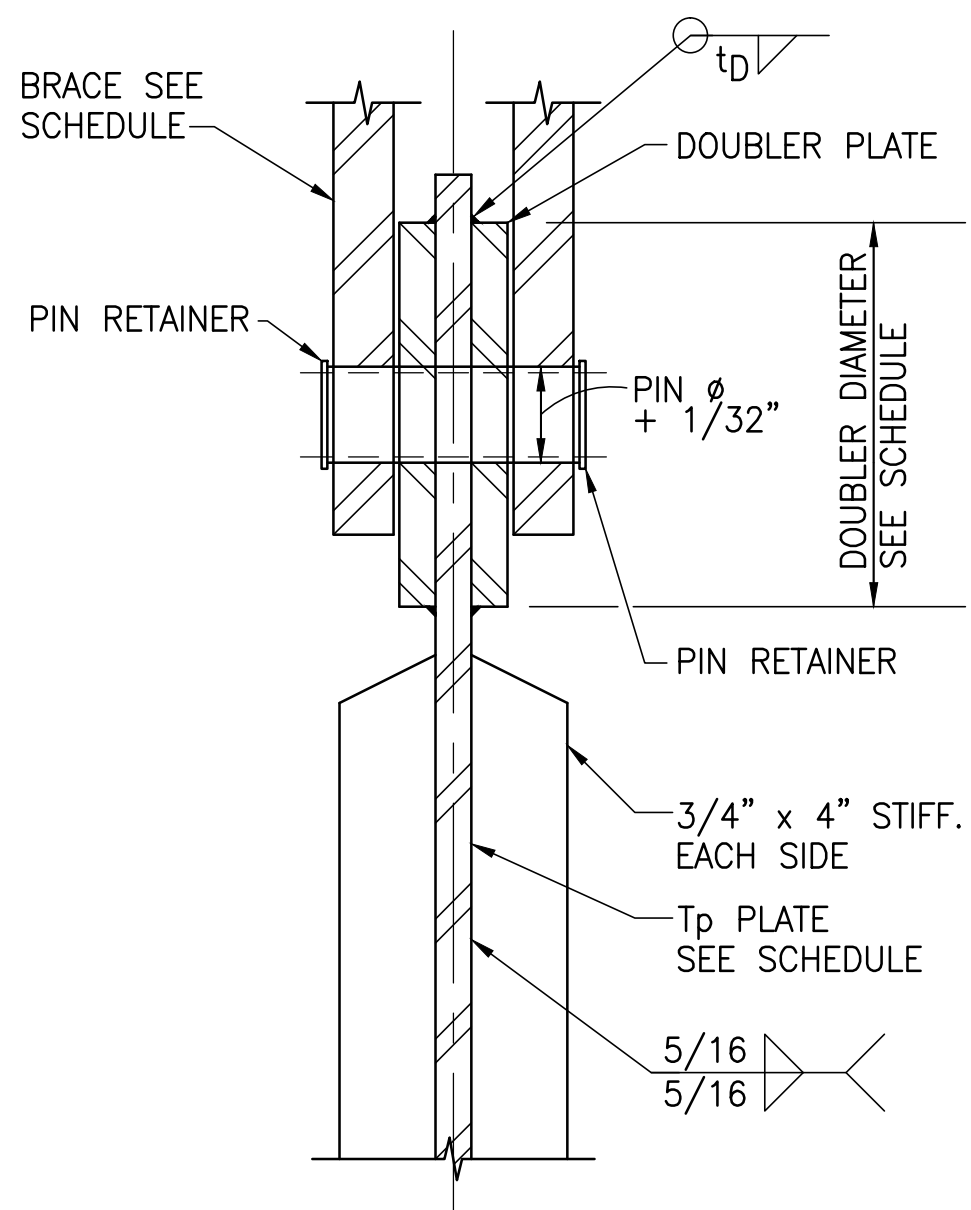
7 TYP. BRACE TO COLUMN FLANGE
CONNECTION AT BASE PLATE
1"=1'-0"



4 TYP. BRACE TO COLUMN WEB
CONNECTION DETAIL
1"=1'-0"



1 TYP. BRACE TO COLUMN FLANGE
CONNECTION DETAIL
1"=1'-0"

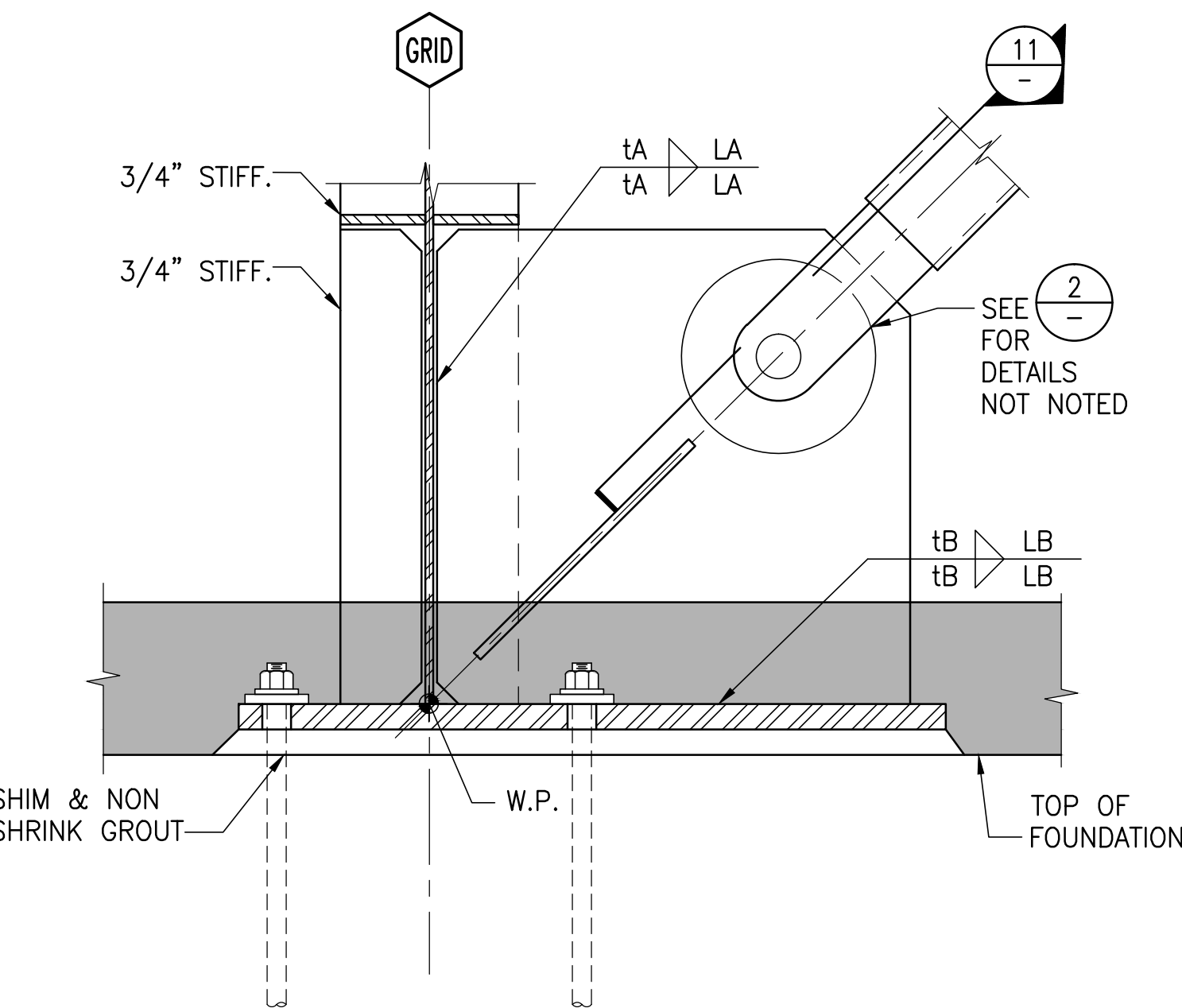


11 TYP. SECTION AT PIN
1 1/2"=1'-0"

BRACE MARK	PIN Ø (IN)	Tp (IN)	DOUBLER Ø (IN)	DOUBLER THICK (IN)	DOUBLER WELD tD (IN)	tA (IN)	LA (IN) MIN	tB (IN)	LB (IN) MIN
BRB 2.00	1 1/2	3/4	4	3/8	1/4	1/4		1/4	
BRB 2.25	1 1/2	3/4	4	1/2	1/4	1/4		1/4	
BRB 2.75	2	3/4	4 1/4	1/2	1/4	1/4		1/4	
BRB 3.00	2	3/4	5	5/8	1/4	5/16		1/4	
BRB 3.25	2	3/4	5	5/8	1/4	5/16		1/4	
BRB 4.00	2	1	5 1/4	5/8	1/4	3/8		5/16	

- NOTES:
- PIN SHALL BE ASTM A354 GRADE BD.
 - CONTRACTOR SHALL PROVIDE DESIGN OF PINNED CONNECTION & WELDED GUSSET CONNECTION TO THE STRUCTURE.

12 BRB CONNECTION SCHEDULE

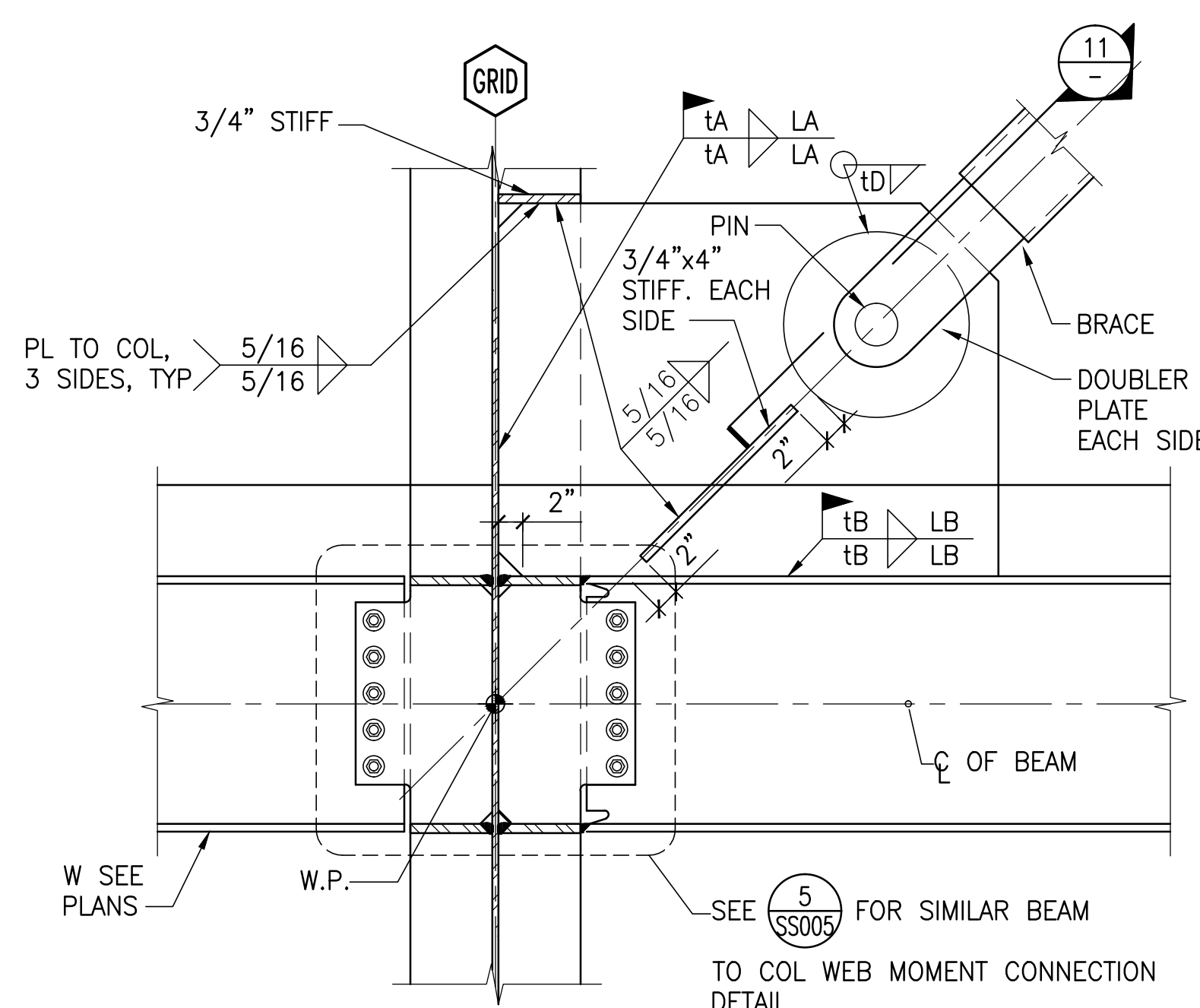


8 TYP. BRACE TO COLUMN WEB
CONNECTION AT BASE PLATE
1"=1'-0"

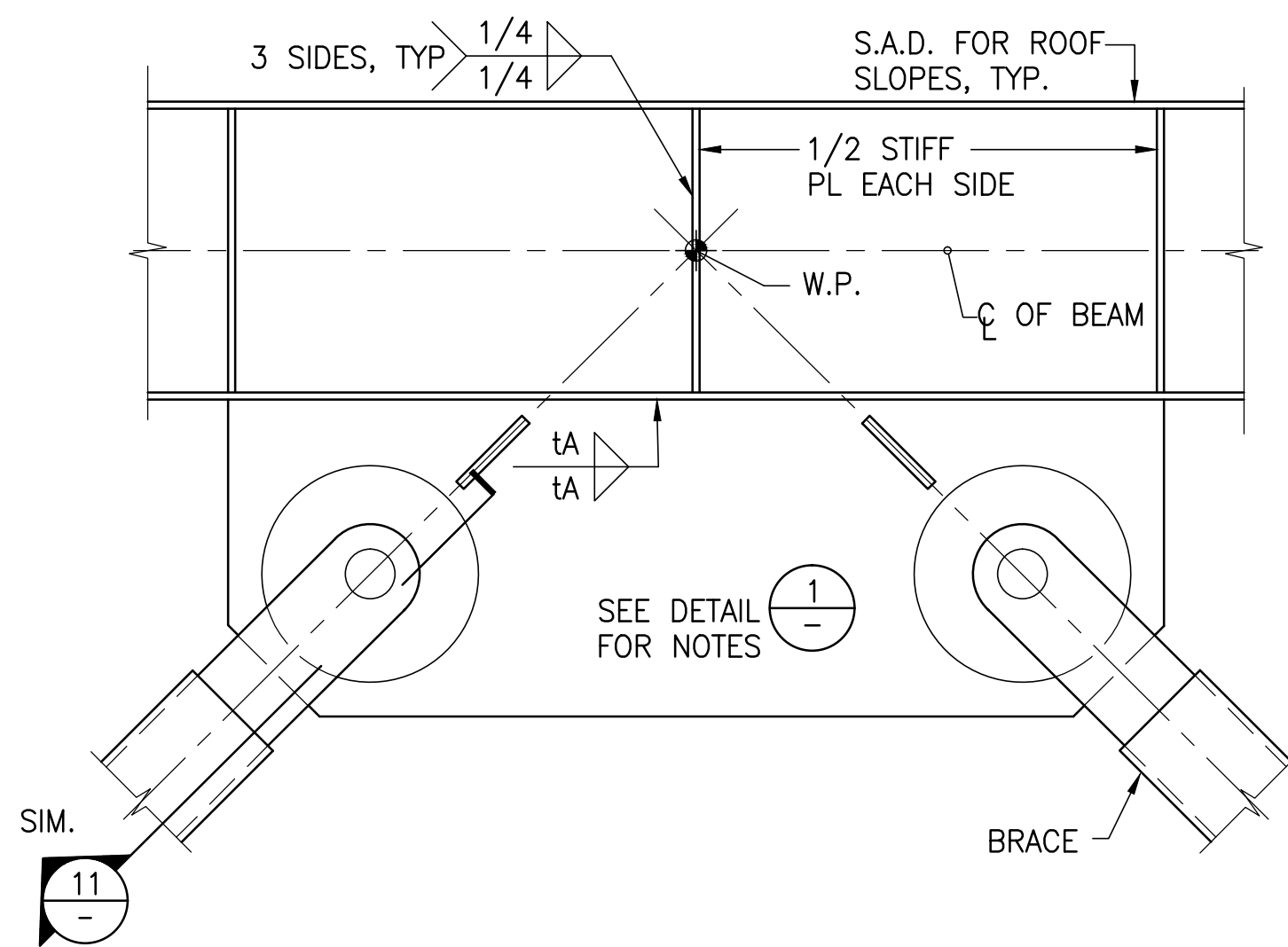
BRACE MARK	CORE PL AREA (SQ IN)	STIFFNESS MODIFIER (Kf)	CASING SIZE
BRB 2.00	2.00	1.40	HSS8x8x3/8
BRB 2.25	2.25	1.40	HSS8x8x3/8
BRB 2.75	2.75	1.40	HSS8x8x1/2
BRB 3.00	3.00	1.40	HSS8x8x1/2
BRB 3.25	3.25	1.40	HSS8x8x1/2
BRB 4.00	4.00	1.40	HSS8x8x3/8

- NOTES:
- CORE PL YIELD STRESS (Fy) SHALL BE 42 KSI ± 4 KSI. YIELD STRESS SHALL BE VERIFIED BY COUPON TESTS.
 - THE PROVIDED STIFFNESS MODIFIER (THE RATIO OF TOTAL BRACE AND CONNECTION STIFFNESS (WP TO WP) TO CORE PL STIFFNESS) SHALL BE WITHIN 10% OF THE VALUES INDICATED ABOVE.
 - MAX β (COMPRESSION STRENGTH ADJUSTMENT FACTOR) FOR THE RANGE OF DEFORMATION CORRESPONDING TO THE LARGER OF A STORY DRIFT OF 2% OR 2 TIMES DESIGN STORY DRIFT SHALL BE 1.12.
 - MAX ω (STRAIN HARDENING ADJUSTMENT FACTOR) FOR THE RANGE OF DEFORMATION CORRESPONDING TO THE LARGER OF A STORY DRIFT OF 2% OR 2 TIMES DESIGN STORY DRIFT SHALL BE 1.36.
 - DESIGN STORY DRIFT IS 0.7%.

9 BRB SCHEDULE



2 TYP. BRACE TO COLUMN WEB
CONNECTION DETAIL
1"=1'-0"

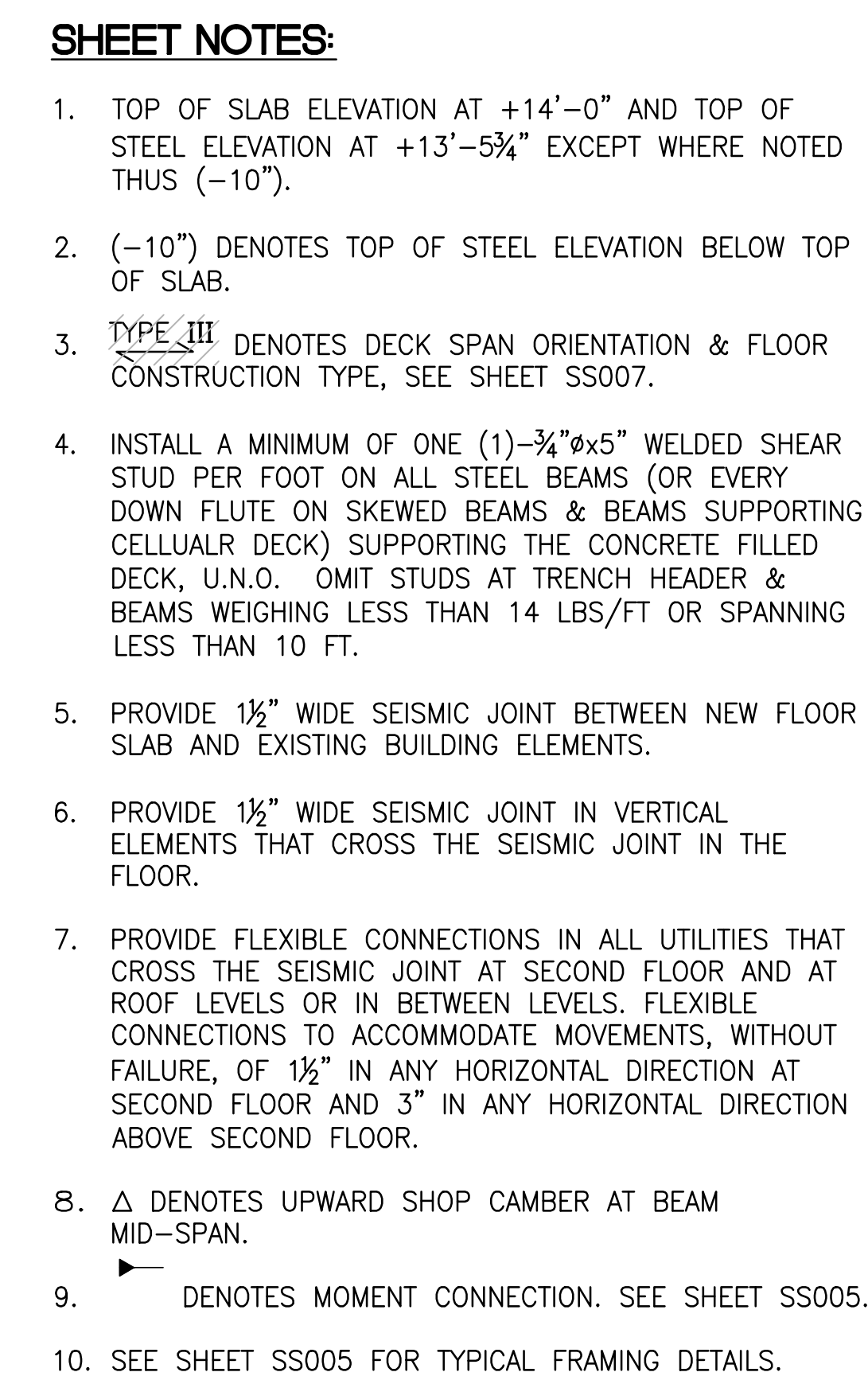


3 TYP. BRACE TO BEAM CONNECTION DETAIL
1"=1'-0"

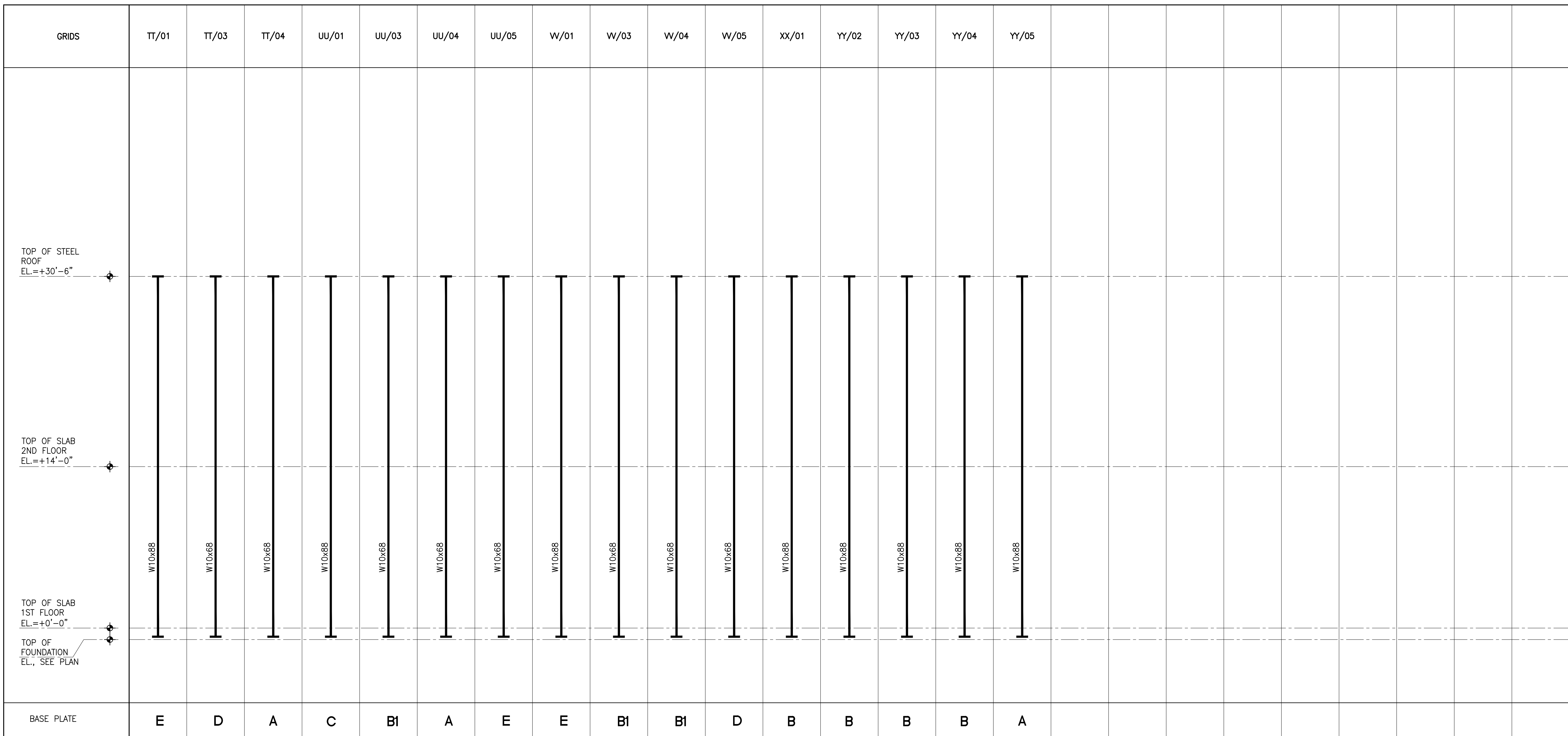
FULLY SPRINKLERED

Revisions:	Date	CONSULTANTS:	Stamp and Signature	ARCHITECT/ENGINEERS:	Drawing Title	Project Title	Project Number	Office of Construction and Facilities Management	
		Syska Hennessy Group, Inc. 425 California Street Suite 700 San Francisco, CA 94104 Tel: 415.288.9060 Fax: 415.835.0385 www.syska.com	SJ ENGINEERS 300 Frank H. Ogawa Plaza Suite 308 Oakland, CA 94612 Tel: (510) 832-1505 Fax: (510) 832-1507 Job No: 213-0801	ENGINEERS ARCHITECTS ONE KAISER PLAZA SUITE 445 OAKLAND CALIFORNIA 94612 TEL 510.271.6701 FAX 510.271.6707 ©THE KPA GROUP 2014 KPA Project No. 582.00	TYPICAL BUCKLING RESTRAINED BRACE DETAILS	ESTABLISH SUNNYVALE R AND D CAMPUS	640-397	VA PAHCS	
					Approved Project Director - VAPAHCS PLANNING AND ENGINEERING	Location 1080 INNOVATION WAY, SUNNYVALE, CA 94085	Building Number 1002		Office of Construction and Facilities Management
						Date 11/25/2014	Checked HJK	Drawn KPA TEAM	
							Dwg. of		

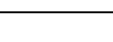
VA FORM 08-6231



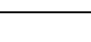
<div style="display: flex; justify-content: space-between;"> <div> <p>CONSULTANTS:</p> <div style="display: flex; align-items: center;"> <div> <p>Syska Hennessy Group, Inc. 425 California Street Suite 700 San Francisco, CA 94104 Tel: 415.288.9060 Fax: 415.335.0385 www.syska.com</p> </div> </div> </div> <div> <p>SJ ENGINEERS 300 Frank H. Ogawa Plaza Suite 308 Oakland, CA 94612 Tel: (510) 832-1505 Fax: (510) 832-1507 Job No: 213-0801</p> </div> </div>	<p>Stamp and Signature</p> <div style="text-align: center;"> </div>	<p>ARCHITECT/ENGINEERS:</p> <div style="display: flex; align-items: center;"> <div> <p>ENGINEERS ARCHITECTS</p> <p>ONE KAISER PLAZA SUITE 445 OAKLAND CALIFORNIA 94612 TEL 510.271.6701 FAX 510.271.6707</p> <p>©THE KPA GROUP 2014 KPA Project No. 582.00</p> </div> </div>	<table border="1" style="width: 100%; border-collapse: collapse;"> <tr> <td colspan="2"> <p>Drawing Title</p> <p>SECOND FLOOR FRAMING PLAN</p> </td> <td colspan="2"> <p>Project Title</p> <p>ESTABLISH SUNNYVALE R AND D CAMPUS</p> </td> <td> <p>Project Number</p> <p>640-397</p> </td> </tr> <tr> <td colspan="2"> <p>Approved: Project Director</p> <p>-</p> <p>VAPAHS PLANNING AND ENGINEERING</p> </td> <td colspan="2"> <p>Location</p> <p>1080 INNOVATION WAY, SUNNYVALE, CA 94085</p> </td> <td> <p>Drawing Number</p> <p>SS102</p> </td> </tr> <tr> <td colspan="2"></td> <td> <p>Date</p> <p>11/25/2014</p> </td> <td> <p>Checked</p> <p>HHK</p> </td> <td> <p>Drawn</p> <p>KPA TEAM</p> </td> </tr> </table>	<p>Drawing Title</p> <p>SECOND FLOOR FRAMING PLAN</p>		<p>Project Title</p> <p>ESTABLISH SUNNYVALE R AND D CAMPUS</p>		<p>Project Number</p> <p>640-397</p>	<p>Approved: Project Director</p> <p>-</p> <p>VAPAHS PLANNING AND ENGINEERING</p>		<p>Location</p> <p>1080 INNOVATION WAY, SUNNYVALE, CA 94085</p>		<p>Drawing Number</p> <p>SS102</p>			<p>Date</p> <p>11/25/2014</p>	<p>Checked</p> <p>HHK</p>	<p>Drawn</p> <p>KPA TEAM</p>	<p style="text-align: center;">Office of Construction and Facilities Management</p> <div style="text-align: center;"> <p><small>Vacuum Attenuation Pole Also Health Care System</small></p> </div>
<p>Drawing Title</p> <p>SECOND FLOOR FRAMING PLAN</p>		<p>Project Title</p> <p>ESTABLISH SUNNYVALE R AND D CAMPUS</p>		<p>Project Number</p> <p>640-397</p>															
<p>Approved: Project Director</p> <p>-</p> <p>VAPAHS PLANNING AND ENGINEERING</p>		<p>Location</p> <p>1080 INNOVATION WAY, SUNNYVALE, CA 94085</p>		<p>Drawing Number</p> <p>SS102</p>															
		<p>Date</p> <p>11/25/2014</p>	<p>Checked</p> <p>HHK</p>	<p>Drawn</p> <p>KPA TEAM</p>															



CONSULTANTS:


SYSKA HENNESSY
group
A member company of SH Group, Inc.

Syska Hennessy Group, Inc.
425 California Street
Suite 700
San Francisco, CA 94104
Tel: 415.288.8960
Fax: 415.835.0385
www.syska.com


SJ ENGINEERS
300 Frank H. Ogawa Plaza
Suite 308
Oakland, CA 94612
Tel: (510) 832-1505
Fax: (510) 832-1507
Job No: 213-0801

ARCHITECT/ENGINEERS:

ENGINEERS ARCHITECTS

ONE KAISER PLAZA, SUITE 445
OAKLAND, CALIFORNIA 94612

TEL 510.271.6701 FAX 510.271.6707

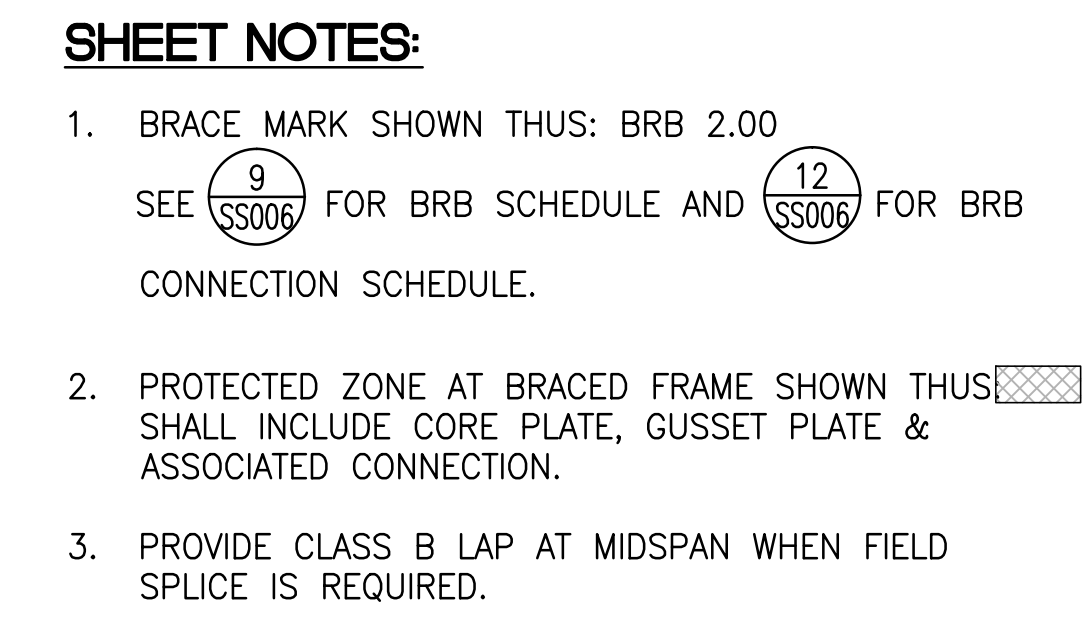
THE KPA GROUP

OTHE KPA GROUP 2014
KPA Project No. 552.00

Project Title		
ESTABLISH SUNNYVALE R AND D CAMPUS		
Location		
1080 INNOVATION WAY, SUNNYVALE, CA 94085		
Date	Checked	Drawn
11/25/2014	H-HK	KPA TEAM


Office of
Construction
and Facilities
Management

VA PAHCS
Veterans Affairs Palo Alto Health Care System



<div style="display: flex; justify-content: space-between;"> <div> <p>Revisions:</p> <p>Date</p> </div> <div> <p>Stamp and Signature</p> </div> </div>	<div style="display: flex; justify-content: space-between;"> <div> <p>CONSULTANTS:</p> <div style="display: flex; align-items: center;"> <div> <p>Syska Hennessy Group, Inc. 425 California Street Suite 700 San Francisco, CA 94104 Tel: 415.288.9060 Fax: 415.836.0385 www.syska.com</p> </div> </div> <p>A member company of SH Group, Inc.</p> </div> <div> <p>SJ ENGINEERS</p> <div style="display: flex; align-items: center;"> <div> <p>300 Frank H. Ogawa Plaza Suite 308 Oakland, CA 94612 Tel: (510) 832-1505 Fax: (510) 832-1507 Job No: 213-0801</p> </div> </div> </div> </div>	<div style="display: flex; justify-content: space-between;"> <div> <p>ARCHITECT/ENGINEERS:</p> <div style="display: flex; align-items: center;"> <div> <p>ENGINEERS ARCHITECTS</p> <p>ONE KAISER PLAZA SUITE 445 OAKLAND, CALIFORNIA 94612</p> <p>NO 2151 ST/3/2015</p> <p>TEL 510.271.6701 FAX 510.271.6707</p> <p>©THE KPA GROUP 2014 KPA Project No. 682.04</p> </div> </div> </div> </div>	<div style="display: flex; justify-content: space-between;"> <div> <p>Drawing Title</p> <p>BRACED FRAME ELEVATIONS</p> <p>Approved Project Director</p> <p>-</p> <p>VAPAHCs PLANNING AND ENGINEERING</p> </div> <div> <p>Project Title</p> <p>ESTABLISH SUNNYVALE R AND D CAMPUS</p> <p>Location</p> <p>1080 INNOVATION WAY, SUNNYVALE, CA 94085</p> <div style="display: flex; justify-content: space-between;"> <div> <p>Date</p> <p>11/25/2014</p> </div> <div> <p>Checked</p> <p>HHK</p> </div> <div> <p>Drawn</p> <p>KPA TEAM</p> </div> </div> </div> </div>	<div style="display: flex; justify-content: space-between;"> <div> <p>Project Number</p> <p>640-397</p> <p>Building Number</p> <p>1002</p> <p>Drawing Number</p> <p>SS301</p> <p>Dwg. of</p> </div> <div> <p>Office of</p> <p>Construction and Facilities Management</p> <p>VAPAHCs</p> <p>Veterans Affairs Planning and Engineering Civil, Architect, Health Care System</p> </div> </div>
--	--	--	---	--



- BRACE MARK SHOWN THUS: BRB 2.00
SEE $\left(\frac{9}{SS006}\right)$ FOR BRB SCHEDULE AND $\left(\frac{12}{SS006}\right)$ FOR BRB CONNECTION SCHEDULE.
- PROTECTED ZONE AT BRACED FRAME SHOWN THUS  SHALL INCLUDE CORE PLATE, GUSSET PLATE & ASSOCIATED CONNECTION.
- PROVIDE CLASS B LAP AT MIDSPAN WHEN FIELD SPLICE IS REQUIRED.

[illegible]

CONSULTANTS:



SYSKA HENNESSY
GROUP
A member company of SH Group, Inc.

Syska Hennessy Group, Inc.
425 California Street
Suite 700
San Francisco, CA 94104
Tel: 415.288.9060
Fax: 415.835.0385
www.syska.com



SJ ENGINEERS
300 Frank H. Ogawa Plaza
Suite 308
Oakland, CA 94612
Tel: (510) 832-1505
Fax: (510) 832-1507
Job No: 213-0801

Stamp and Signature



ARCHITECT/ENGINEERS:



THE KPA GROUP

ENGINEERS ARCHITECTS
ONE KAISER PLAZA SUITE 445
OAKLAND CALIFORNIA 94612
TEL 510.271.6701 FAX 510.271.6707

©THE KPA GROUP 2014
KPA Project No. 582.00

Drawing Title	BRACED FRAME ELEVATIONS
---------------	-------------------------

Approved: Project Director
-
-
VAPAHCS PLANNING AND ENGINEERING

Project Title	ESTABLISH SUNNYVALE R AND D CAMPUS
---------------	--

Location	1080 INNOVATION WAY, SUNNYVALE, CA 94085
----------	--

Date
11/25/2014

Checked
HHK

Drawn	KPA TEAM
-------	----------

Project Number	640-397
----------------	---------

Building Number	1002
-----------------	------

	Drawing Number

SS302

Office of
Construction
and Facilities
Management



FULLY SPRINKLERED