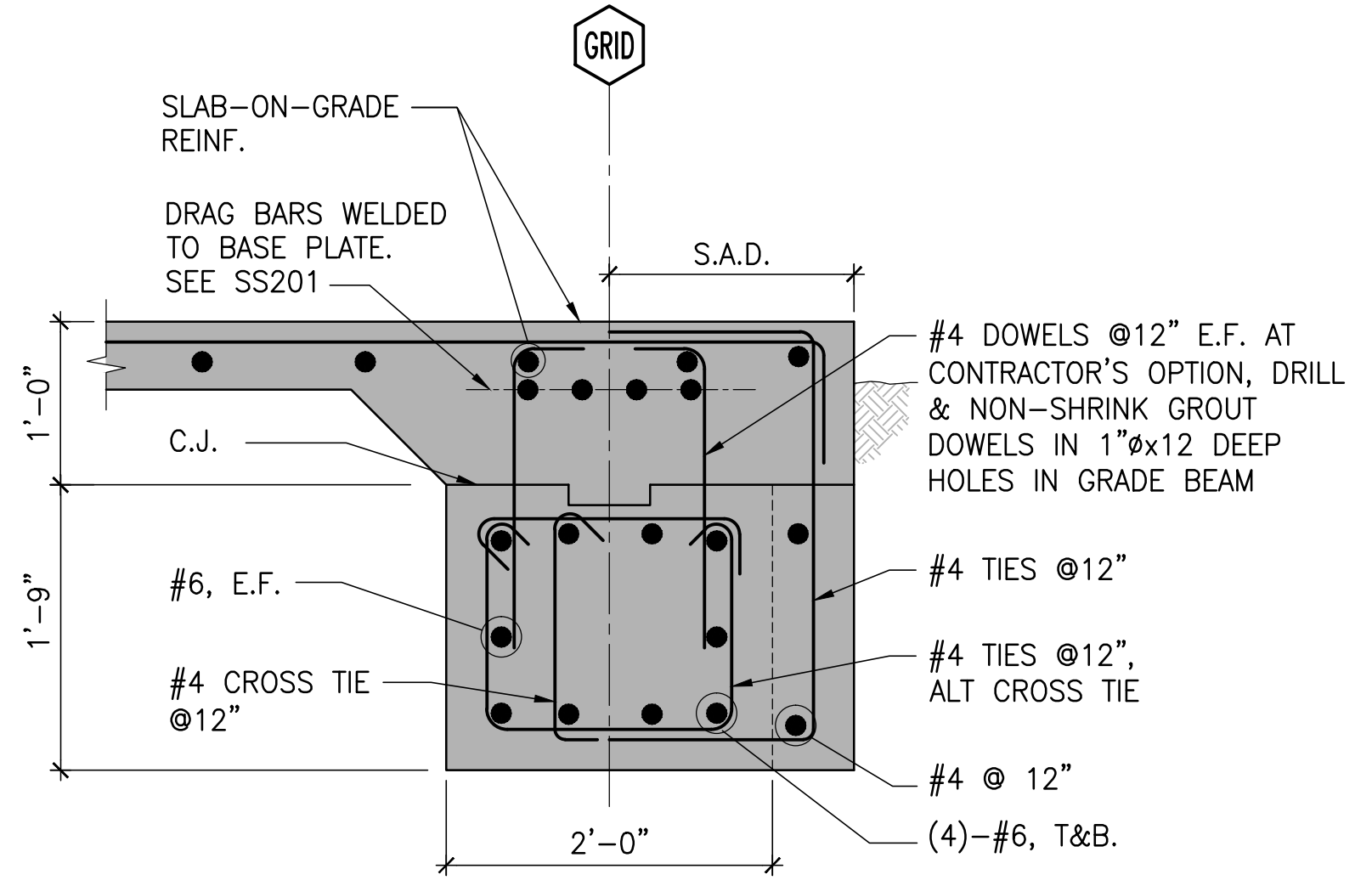
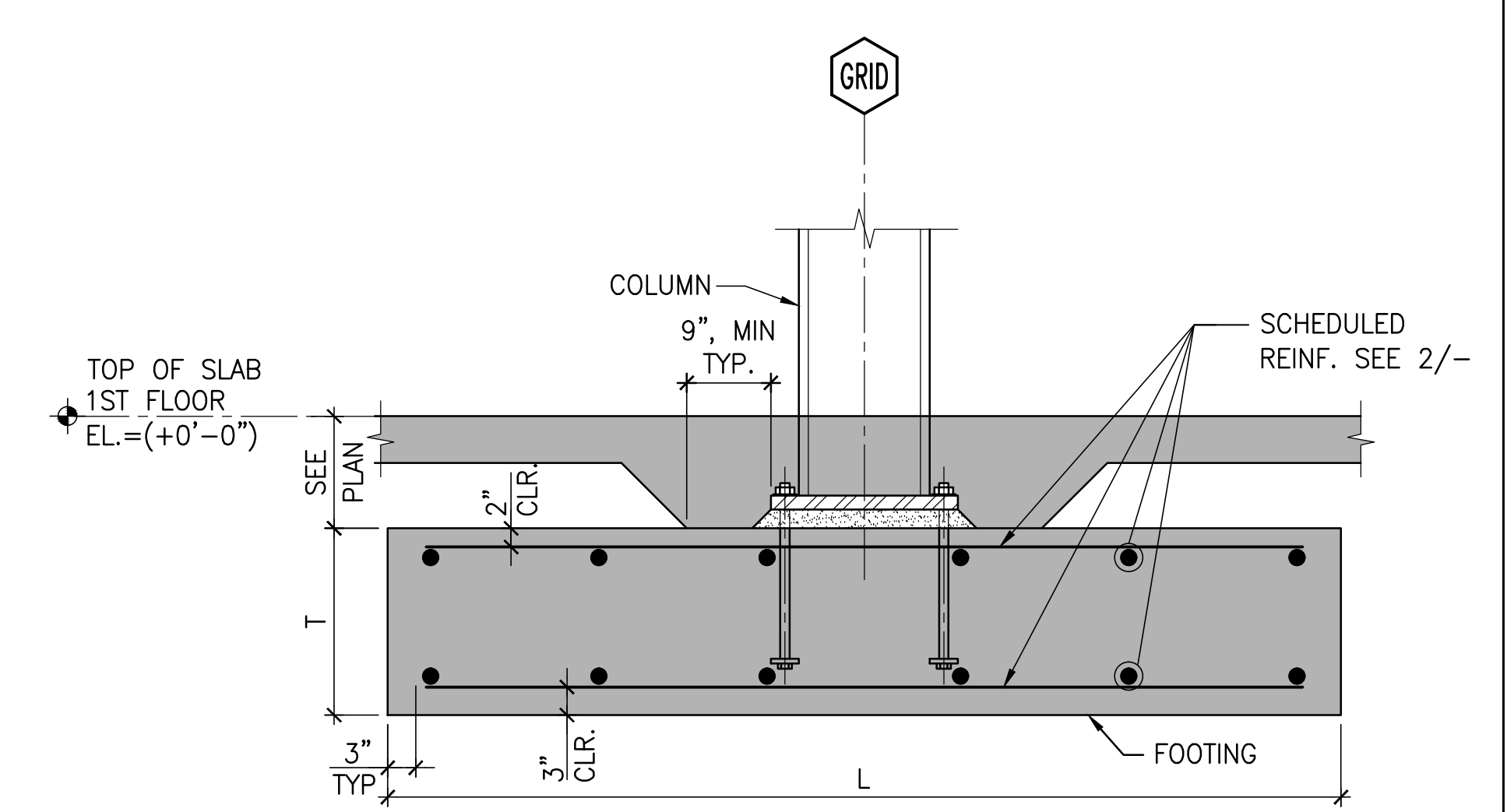


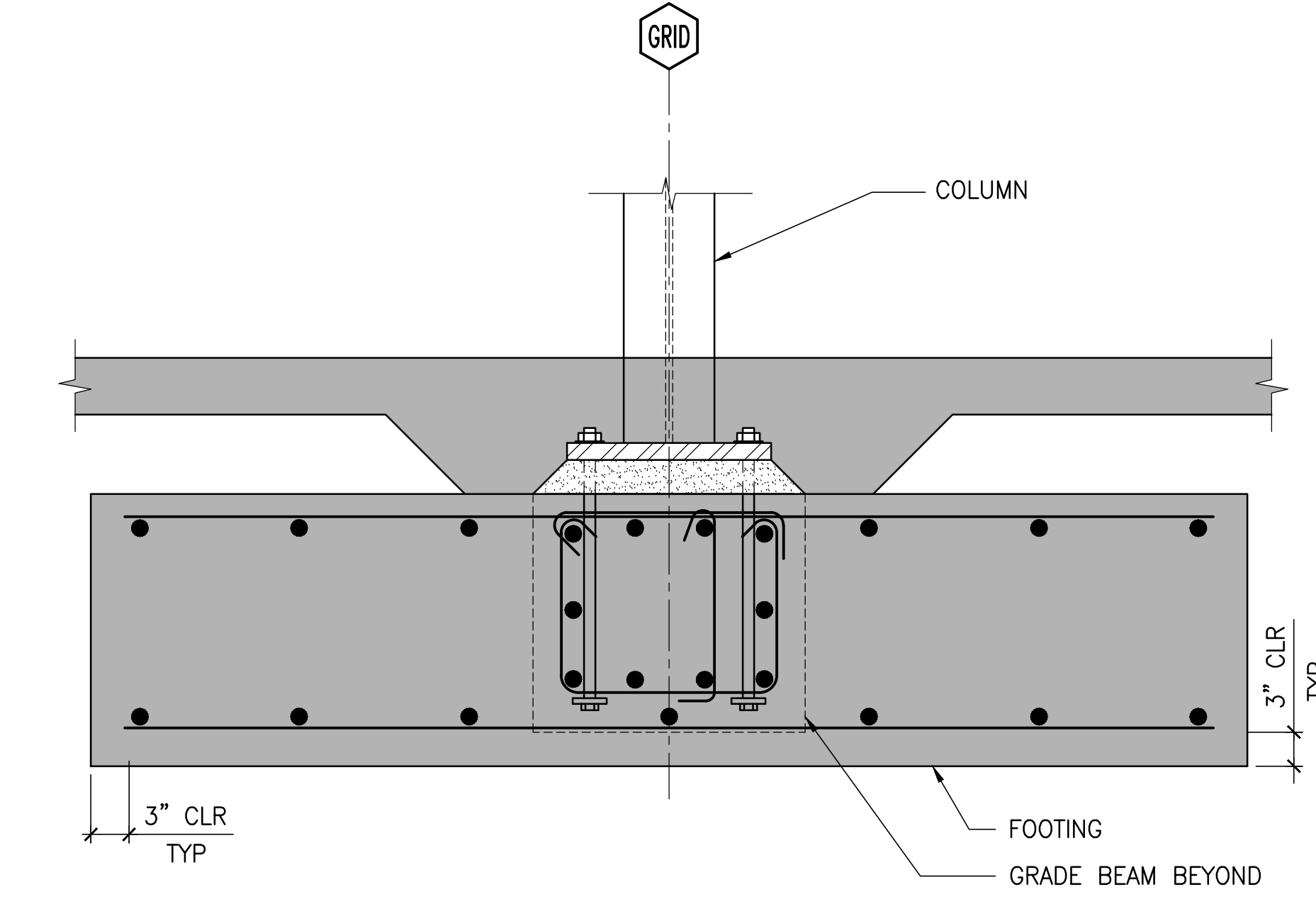
three inches = one foot
one and one half inches = one foot
one inch = one foot
three quarters inch = one foot
one half inch = one foot
three eighths inch = one foot
one quarter inch = one foot
one eighth inch = one foot



4 SECTION
1"=1'-0"



1 TYPICAL FOOTING
N.T.S.

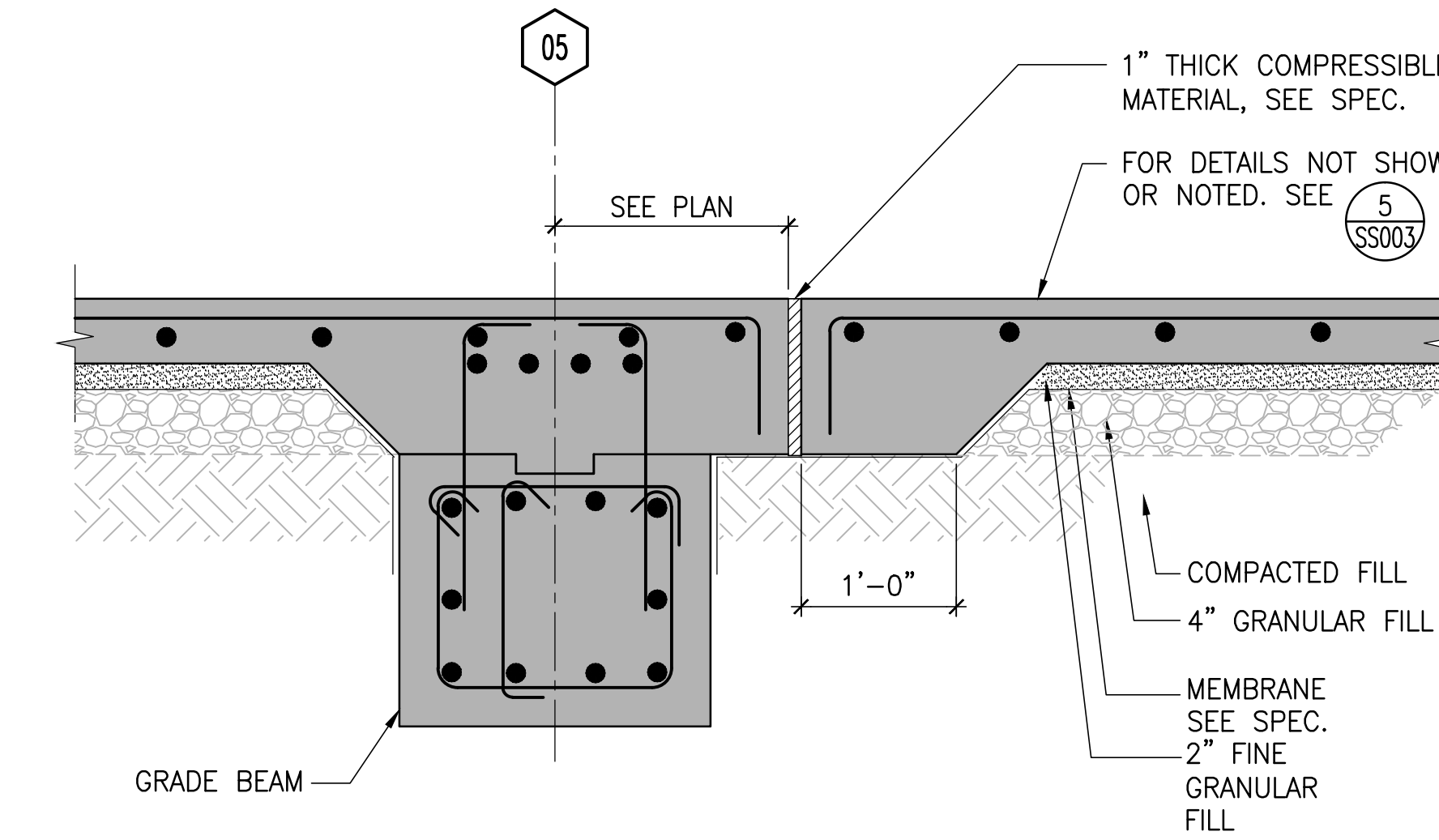


5 SECTION
N.T.S.

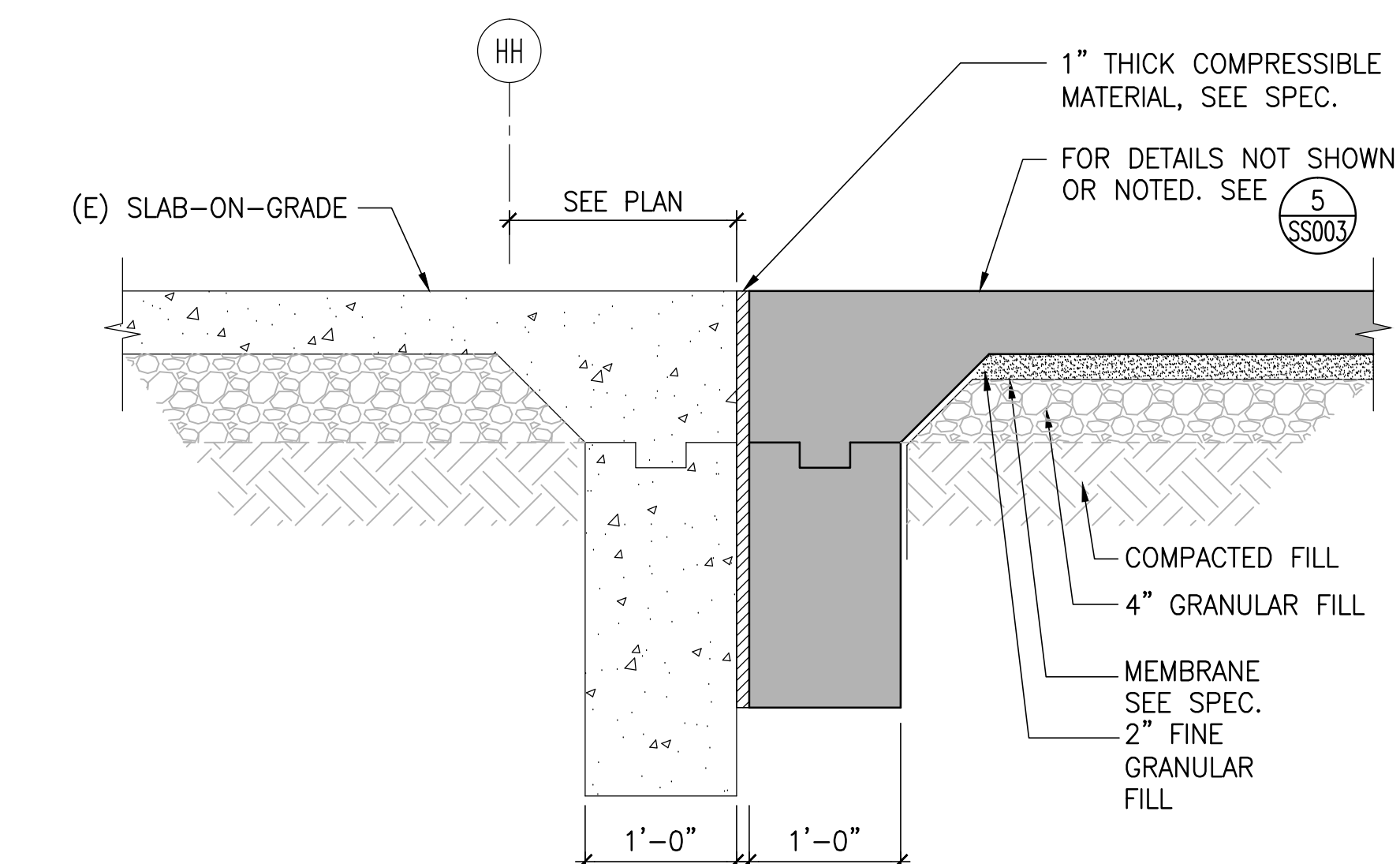
MARK	DIMENSION			REINFORCEMENT @ BOTTOM		REINFORCEMENT @ TOP	
	B	L	T	LONG WAY	SHORT WAY	LONG WAY	SHORT WAY
F4	4'-0"	4'-0"	1'-9"	6-#5	6-#5	--	--
F86	8'-6"	8'-6"	1'-9"	7-#7	7-#7	--	--
F10	10'-0"	10'-0"	2'-0"	9-#7	9-#7	--	--
F86T	8'-6"	8'-6"	2'-0"	7-#7	7-#7	7-#6	7-#6
F10T	10'-0"	10'-0"	2'-0"	9-#7	9-#7	9-#6	9-#6

- NOTES:
- FOOTING REINFORCEMENT SHALL BE UNIFORMLY DISTRIBUTED ACROSS ENTIRE WIDTH OF FOOTING.
 - PLACE LONG BARS AT OUTER LAYER, U.O.N.

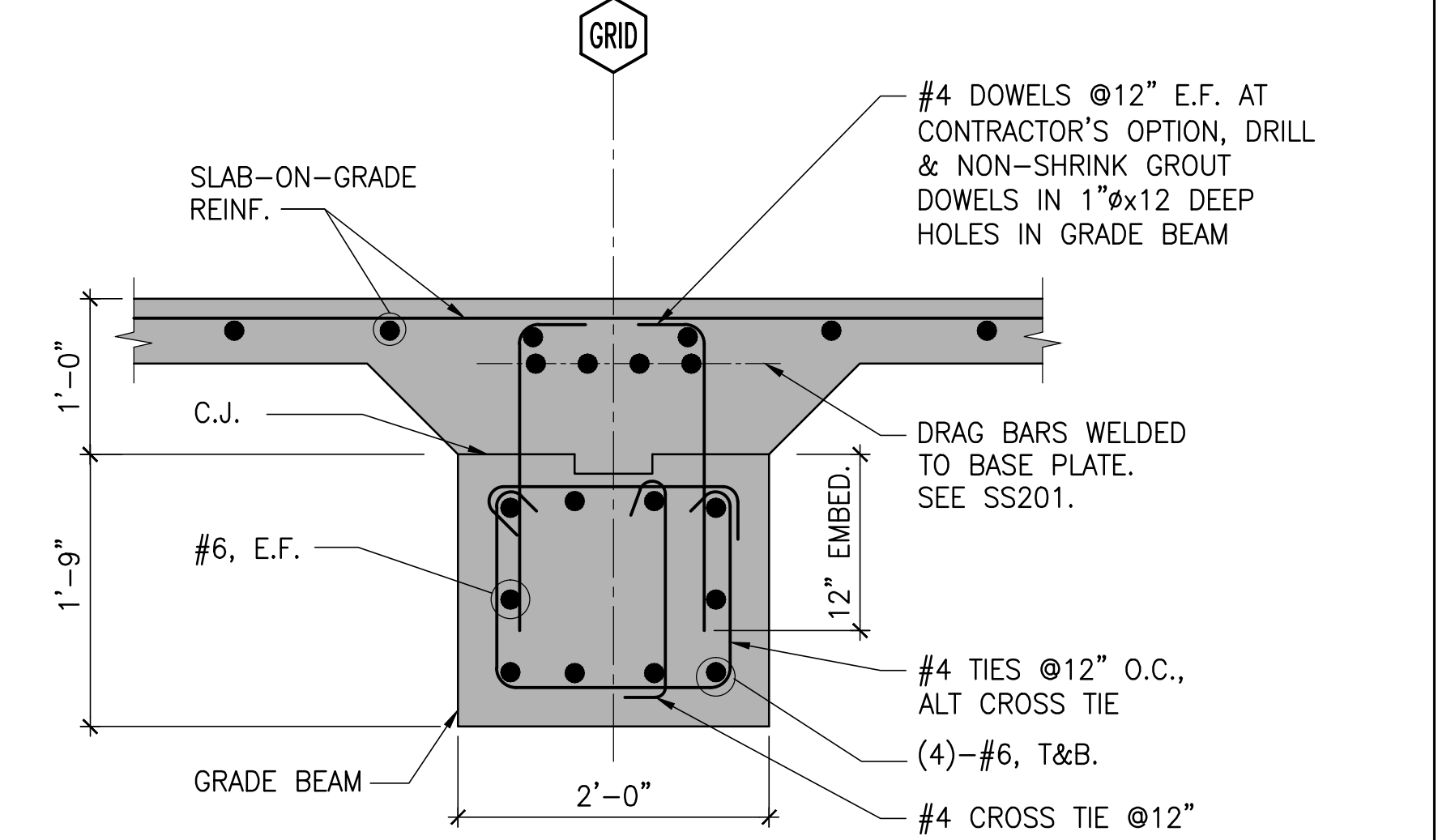
2 FOOTING SCHEDULE
N.T.S.



9 SECTION
1"=1'-0"



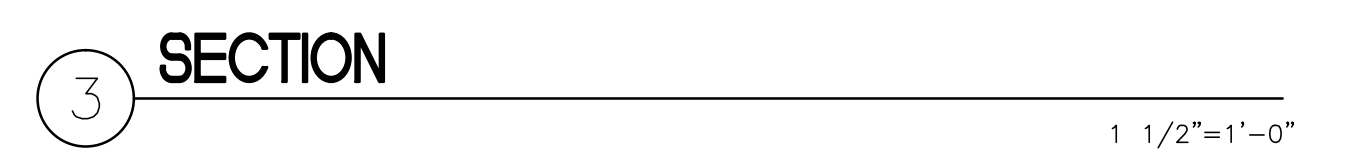
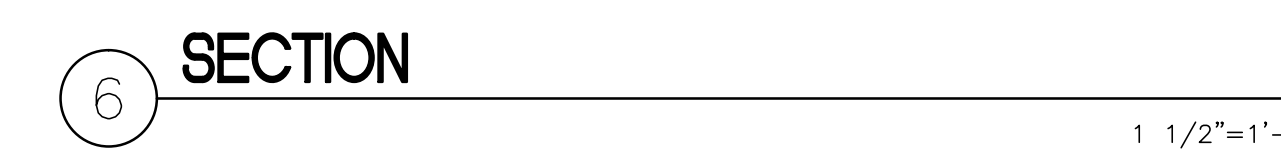
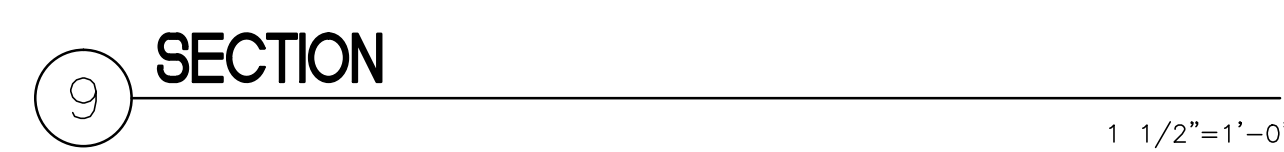
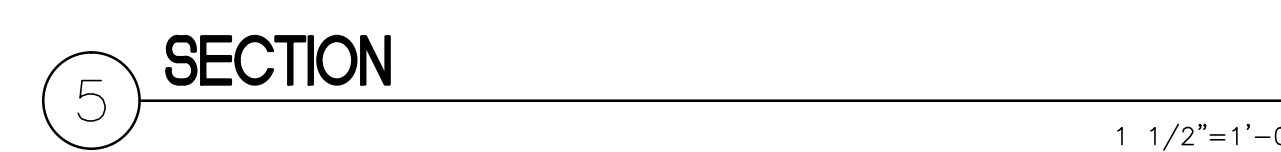
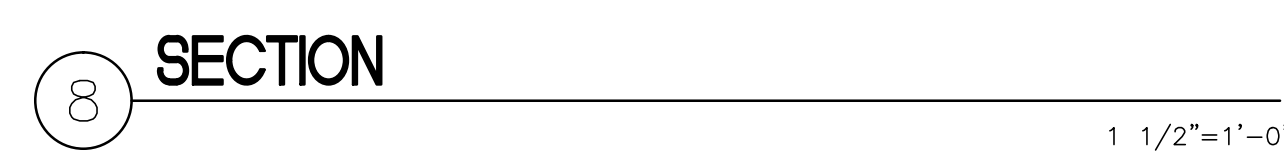
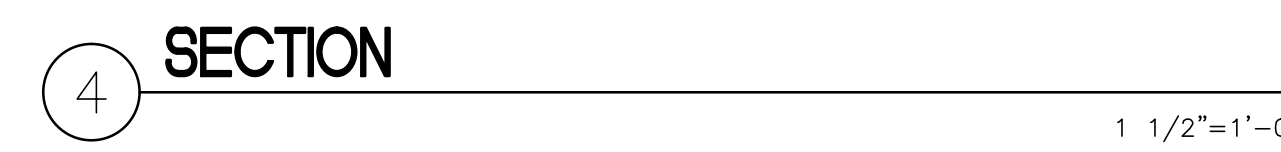
6 SECTION
1"=1'-0"



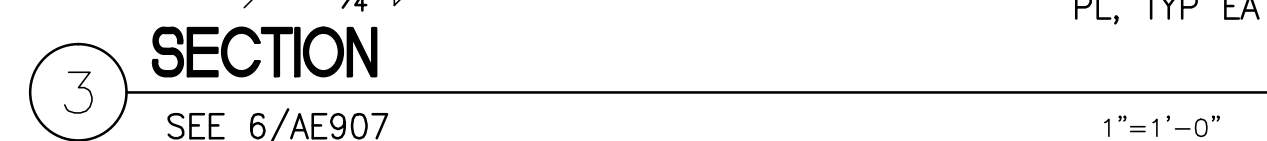
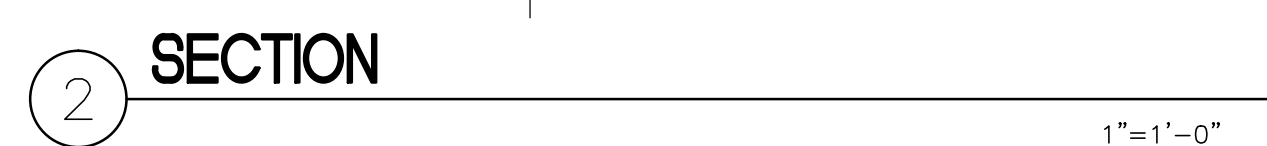
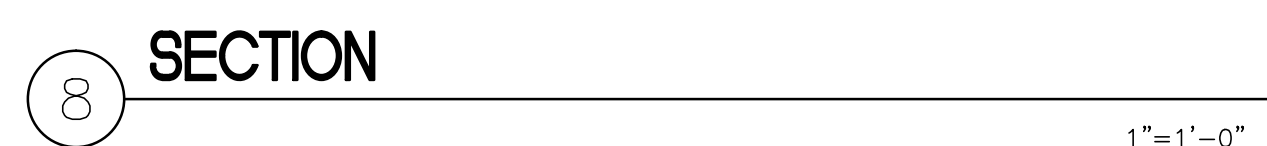
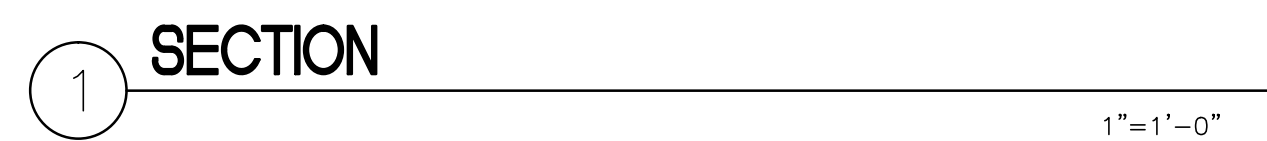
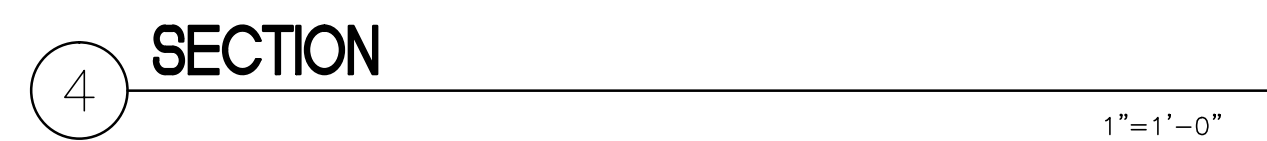
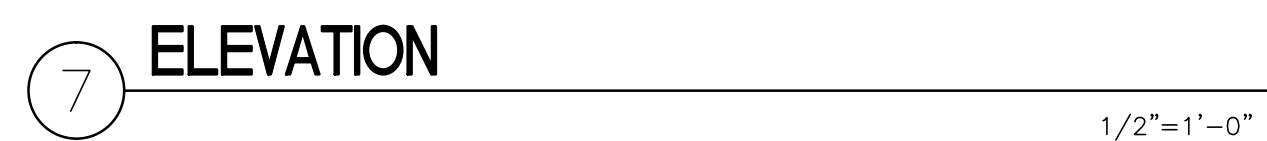
3 SECTION
1"=1'-0"

FULLY SPRINKLERED

Revisions:	Date	CONSULTANTS:	Stamp and Signature	ARCHITECT/ENGINEERS:	Drawing Title	Project Title	Project Number	Office of Construction and Facilities Management
		Syska Hennessy Group, Inc.		ENGINEERS ARCHITECTS	FOUNDATION DETAILS	ESTABLISH SUNNYVALE R AND D CAMPUS	640-397	
		300 Frank H. Ogawa Plaza		ONE KAISER PLAZA SUITE 445	Approved Project Director	Location	Building Number	
		Suite 700		OAKLAND CALIFORNIA 94612	-	1080 INNOVATION WAY, SUNNYVALE, CA 94085	1002	
		Tel: 415.288.9060		TEL 510.271.6701 FAX 510.271.6707	VAPAHCs PLANNING AND ENGINEERING	Date	Drawing Number	
		Fax: 415.835.0385				11/25/2014	SS401	
		www.syska.com				Checked	Dwg - of -	
						HHK		
						Drawn		
						KPA TEAM		



<div style="display: flex; justify-content: space-between;"> <div> <p>CONSULTANTS:</p> <div style="display: flex; align-items: center;"> <div> <p>Syska Hennessy Group, Inc. 425 California Street Suite 700 San Francisco, CA 94104 Tel: 415.288.9060 Fax: 415.835.0385 www.syska.com</p> </div> </div> <p>A member company of SH Group, Inc.</p> </div> <div> <p>SJ ENGINEERS 300 Frank H. Ogawa Plaza Suite 308 Oakland, CA 94612 Tel: (510) 832-1505 Fax: (510) 832-1507 Job No: 213-0801</p> </div> </div>	<p>Stamp and Signature</p>	<p>ARCHITECT/ENGINEERS:</p> <div style="display: flex; align-items: center;"> <div> <p>ENGINEERS ARCHITECTS ONE KAISER PLAZA SUITE 445 OAKLAND CALIFORNIA 94612 Tel: 510.271.6701 FAX 510.271.6707 ©THE KPA GROUP 2014 KPA Project No. 582.00</p> </div> </div>	<p>Drawing Title STAIR DETAILS</p> <p>Approved Project Director - VAPAHCS PLANNING AND ENGINEERING</p>	<p>Project Title ESTABLISH SUNNYVALE R AND D CAMPUS</p> <p>Location 1080 INNOVATION WAY, SUNNYVALE, CA 94085</p> <p>Date 11/25/2014</p> <p>Checked H-K</p> <p>Drawn KPA TEAM</p>	<p>Project Number 640-397</p> <p>Building Number 1002</p> <p>Drawing Number SS502</p> <p>Dwg - of - - of -</p>	<p>Office of Construction and Facilities Management</p> <p>VA PAHCS Veterans Affairs - Palo Alto Health Care System</p>
---	----------------------------	---	--	---	--	---



FULLY SPRINKLERED

A

B

C

D

E

F

ABBREVIATIONS

#	3/C	THREE-CONDUCTOR	-S-	SCHEDULE
-A-	AC	ALTERNATING CURRENT	SD	SCHEDULE
ADA	ADA	AMERICANS WITH DISABILITIES ACT	SPDT	SINGLE POLE, DOUBLE THROW SPECIFICATION
AFC	AFC	ABOVE FINISHED COUNTER	SPKR	SPEAKER
AFF	AFF	ABOVE FINISHED FLOOR	SPST	SINGLE POLE, SINGLE THROW
AFG	AFG	ABOVE FINISHED GRADE	SWBD	SWITCHBOARD
AH	AH	AMPERE HOUR	SWGR	SWITCHGEAR
AHU	AHU	AUTHORITY HAVING JURISDICTION	-T-	TIME CLOCK
AHU	AHU	AIR HANDLING UNIT	TC	TELEPHONE CONTROL PANEL
AIC	AIC	AMPERE INTERRUPTING CAPACITY	TEL	TELEPHONE
ANN	ANN	ANNUNCIATOR	TELECOM	TELECOMMUNICATIONS
ANSI	ANSI	AMERICAN NATIONAL STANDARDS INSTITUTE	TP	TWISTED PAIR
ATS	ATS	AUTOMATIC TRANSFER SWITCH	TPS	TWISTED PAIR SHIELDED
AUX	AUX	AUXILIARY	TTB	TELEPHONE TERMINAL BOARD
AV	AV	AUDIO VISUAL	TV	TELEVISION
AWG	AWG	AMERICAN AIRE GAUGE	TYP	TYPICAL
-B-	BAS	BUILDING AUTOMATION SYSTEM	-U-	UNDERWRITERS LABORATORIES
-C-	C	CONDUIT	UL	UNLESS OTHERWISE NOTED
CAB	CAB	CABINET	UPS	UNINTERRUPTIBLE POWER SUPPLY
CAP	CAP	CAPACITOR	UTIL	UTILITY
CATV	CATV	COMMUNITY ANTENNA TELEVISION	-V-	VOLT
CB	CB	CIRCUIT BREAKER	V	VOLT AMPERE
CCTV	CCTV	CLOSED CIRCUIT TELEVISION	VAR	VOLT AMPERE REACTIVE
CD	CD	CONSTRUCTION DOCUMENTS	VCB	VACUUM CIRCUIT BREAKER
CH	CH	CHILLER	VD	VOLTAGE DROP
CHWP	CHWP	CHILLED WATER PUMP	VFD	VARIABLE FREQUENCY DRIVE
CKT	CKT	CIRCUIT	VR	VOLTAGE REGULATOR
CL	CL	CENTERLINE	-W-	WATT
CLG	CLG	CONDUIT ONLY	W	WATT HOUR METER
CO	CO	COMMUNICATION	WHM	WEATHERPROOF
CP	CP	CONTROL PANEL	WP	WEATHERPROOF
CPT	CPT	CONTROL POWER TRANSFORMER	-X-	XFMR
CSI	CSI	CONSTRUCTION SPECIFICATION INSTITUTE	XP	EXPLOSION PROOF
CT	CT	CURRENT TRANSFORMER	-Z-	ZSRG
CTV	CTV	CABLE TELEVISION		ZERO SEQUENCE REFERENCE GROUND
CU	CU	COPPER		
-D-	DB	DECIBEL		
DC	DC	DIRECT CURRENT		
DDC	DDC	DIRECT DIGITAL CONTROL		
DEMO	DEMO	DEMOLITION		
DIV	DIV	DIVISION		
DPST	DPST	DOUBLE POLE, SINGLE THROW		
DWG	DWG	DRAWING		
-E-	EA	EACH		
EMER	EMER	EMERGENCY		
EMI	EMI	ELECTROMAGNETIC INTERFERENCE		
EMS	EMS	ENERGY MANAGEMENT SYSTEM		
EMT	EMT	ELECTRICAL METALLIC TUBING		
ENGR	ENGR	ENGINEER		
EPO	EPO	EMERGENCY POWER OFF SWITCH		
EXIST, E	EXIST, E	EXISTING TO REMAIN		
-F-	F	FAHRENHEIT		
FA	FA	FIRE ALARM		
FAAP	FAAP	FIRE ALARM ANNUNCIATOR		
FACP	FACP	FIRE ALARM CONTROL PANEL		
FC	FC	FOOT CANDLE		
FLA	FLA	FULL LOAD AMPS		
FLEX	FLEX	FLEXIBLE		
-G-	G	GROUND		
GC	GC	GENERAL CONTRACTOR		
GEN	GEN	GENERATOR		
GFCI	GFCI	GROUND FAULT CIRCUIT INTERRUPTER		
GFR	GFR	GROUND FAULT RELAY		
-H-	HP	HORSEPOWER		
HZ	HZ	HERTZ		
-J-	JB	JUNCTION BOX		
-L-	LA	LIGHTNING ARRESTER		
LBS	LBS	POUND(S)		
LED	LED	LIGHT EMITTING DIODE		
LRA	LRA	LOCKED ROTOR AMPS		
LT	LT	LIGHT		
-M-	MCA	MINIMUM CIRCUIT AMPACITY		
MCB	MCB	MAIN CIRCUIT BREAKER		
MCC	MCC	MOTOR CONTROL CENTER		
MIN	MIN	MINIMUM		
MOP	MOP	MAXIMUM OVERCURRENT PROTECTION		
MV	MV	MEDIUM VOLTAGE		
-N-	N	NEW		
NC	NC	NORMALLY CLOSED		
NER	NER	NEW LOCATION OF EXIST RELOCATED		
NEUT, N	NEUT, N	NEUTRAL		
NL	NL	NIGHT LIGHT		
NO	NO	NORMALLY OPEN		
NTS	NTS	NOT TO SCALE		
-O-	OCP	OVERCURRENT PROTECTION		
-P-	P	POLE		
PB	PB	PULL BOX		
PF	PF	POWER FACTOR		
PH	PH	PHASE		
PNL	PNL	PANEL		
PWR	PWR	POWER		
-R-	RE	REMOVE EXIST		
RL	RL	RELOCATE EXIST		
RTU	RTU	ROOF TOP UNIT		

POWER OUTLETS

FLOOR	WALL	CEILING
DUPLEX RECEPTACLE		
QUADRUPLUX RECEPTACLE		
DUPLEX RECEPTACLE-VOICE-DATA		
GFCI DUPLEX RECEPTACLE		
SIMPLEX RECEPTACLE		
EMERGENCY DUPLEX RECEPTACLE		
EMERGENCY QUADRUPLUX RECEPTACLE		
EMERGENCY SIMPLEX RECEPTACLE		
DUPLEX RECEPTACLE-VOICE		
DUPLEX RECEPTACLE-DATA		
QUAD RECEPTACLE-VOICE-DATA		
QUAD RECEPTACLE-DATA		
JUNCTION BOX		
POKE THRU FITTING		
COUNRTOP DUPLEX RECEPTACLE		
ISOLATED GROUND DUPLEX RECEPTACLE		
ISOLATED GROUND SIMPLEX RECEPTACLE		
EXPLOSION PROOF DUPLEX RECEPTACLE		
EXPLOSION PROOF SIMPLEX RECEPTACLE		
SPLIT WIRE RECEPTACLE		
SPECIAL OUTLET		
MULTI OUTLET SURFACE RACEWAY		

TELECOM

FLOOR	WALL	CEILING
VOICE OUTLET		
DATA OUTLET		
VOICE-DATA OUTLET		
CARD READER		
EMERGENCY BREAK GLASS		
PUSH BUTTON		
SPEAKER - AV		
TELCOM GROUNDING BUS BAR		
TELEPHONE BACKBOARD		

WIRING

	3/4" CONDUIT WITH 2#12 WIRES, UON. GROUND WIRE NOT SHOWN.
	3/4" CONDUIT WITH 3#12 WIRES, UON. GROUND WIRE NOT SHOWN.
	3/4" CONDUIT WITH 4#12 WIRES, UON. GROUND WIRE NOT SHOWN.
	CONDUIT HOMERUN TO PANEL BOARD 1LA WITH CIRCUIT 1,3,5
	CAPPED CONDUIT
	CONDUIT RUN UNDERGROUND OR UNDER THE FLOOR SLAB
	CONDUIT TURNING DOWN
	CONDUIT TURNING UP
	CONDUIT BREAK

LIGHTING

FLOOR	WALL	CEILING
RECESSED DOWNLIGHT		
1X4 SURFACE MOUNTED LIGHT		
2X4 SURFACE MOUNTED LIGHT		
4FT WALL MOUNTED LIGHT		
1X4 EMERGENCY LIGHT		
2X4 EMERGENCY LIGHT		
EXIT SIGN 1 FACE		
EXIT SIGN 1 FACE LEFT ARROW		
LIGHT SWITCH - TIME OPERATED		
LIGHT SWITCH - SINGLE POLE		
LIGHT SWITCH - THREE WAY		
LIGHT SWITCH - KEY OPERATED		
LIGHT SWITCH - WITH PILOT LIGHT		
SWITCH - WITH THERMAL OVERLOAD		
DIMMER		
OCCUPANCY SENSOR		
PHOTOCELL		
OCCUPANCY SENSOR POWER PACK		
OVERRIDE SWITCH		
ELECTRICAL PUSH BUTTON		

POWER

	DISTRIBUTION PANELBOARD
	480/277V OR 208/120V RECESSED PANELBOARD
	480/277V OR 208/120V SURFACE MOUNTED PANELBOARD
	TRANSFORMER
	DISCONNECT SWITCH
	SWITCH - MOTOR RATED
	FUSED DISCONNECT SWITCH
	MAGNETIC MOTOR STARTER - NEMA SIZE 1 INDICATED
	STARTER-DISCONNECT SWITCH
	MOTOR
	RELAY
	VARIABLE FREQUENCY DRIVE
	PULL BOX
	MANHOLE
	CABLE TRAY

SYMBOLS (AS APPLICABLE)

SCHEMATIC DIAGRAM

FLOOR	WALL	CEILING
TERMINAL BLOCK		
NORMALLY CLOSED CONTACT		
NORMALLY OPEN CONTACT		
THROW CONTACT - SINGLE		
THROW CONTACT - DOUBLE		
SWITCH - CIRCUIT CLOSED		
SWITCH - CIRCUIT OPEN		

FIRE ALARM

FLOOR	WALL	CEILING
MANUAL PULL STATION		
ADDRESSABLE INTERFACE MODULE		
ADDRESSABLE RELAY MODULE		
WATER FLOW SWITCH		
TAMPER SWITCH		
SMOKE DAMPER		
HEAT DETECTOR		
STROBE WALL		
SPEAKER-STROBE, CEILING WITH CANDELA VALUES		
STROBE UNIT, CEILING		
FIRE ALARM CONTROL PANEL		
REMOTE ANNUNCIATOR PANEL		
DUCT DETECTOR		
ALARM BELL, WEATHERPROOF		
POWER SUPERVISORY RELAY		
WEATHERPROOF		
MANUAL PULL STATION		
ADDRESSABLE INTERFACE MODULE		
WATER FLOW SWITCH		
TAMPER SWITCH		
PRESSURE SWITCH		
SMOKE-HEAT DETECTOR		
SMOKE DETECTOR - IONIZATION OF COMBUSTION		
SMOKE DETECTOR - PHOTOELECTRIC OF COMBUSTION		
HEAT DETECTOR		
HORN		
HORN-STROBE		
SPEAKER-STROBE		
STROBE LIGHT UNIT		
AUTOMATIC DOOR		
DOOR HOLDER		
FIRE ALARM CONTROL PANEL		
FIRE ALARM TERMINAL CABINET		
REMOTE ANNUNCIATOR PANEL		
COMBINATION SMOKE/FIRE DAMPER		






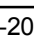


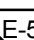




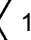




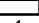
SINGLE LINE DIAGRAM

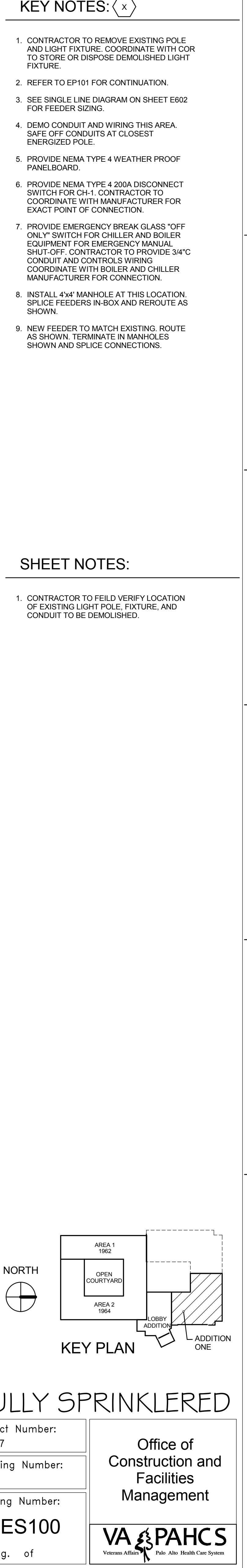
	CIRCUIT BREAKER SWITCH
	FUSE - IN-LINE
	FUSE SWITCH
	FUSED-SWITCH BUS PLUG
	CIRCUIT BREAKER - ENCLOSED
	KIRK KEY INTERLOCK
	BUSDUCT
	SWITCHGEAR BUSWAY
	GROUND FAULT RELAY
	AMMETER
	DIGITAL METER U.O.N.
	TRANSFORMER - DELTA WYE-GROUNDED
	ATS - 3-POLE U.O.N. BP - WITH BYPASS ISOLATION
	BATTERY
	GENERATOR
	PANEL


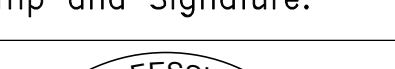
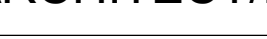

GROUNDING SYSTEM

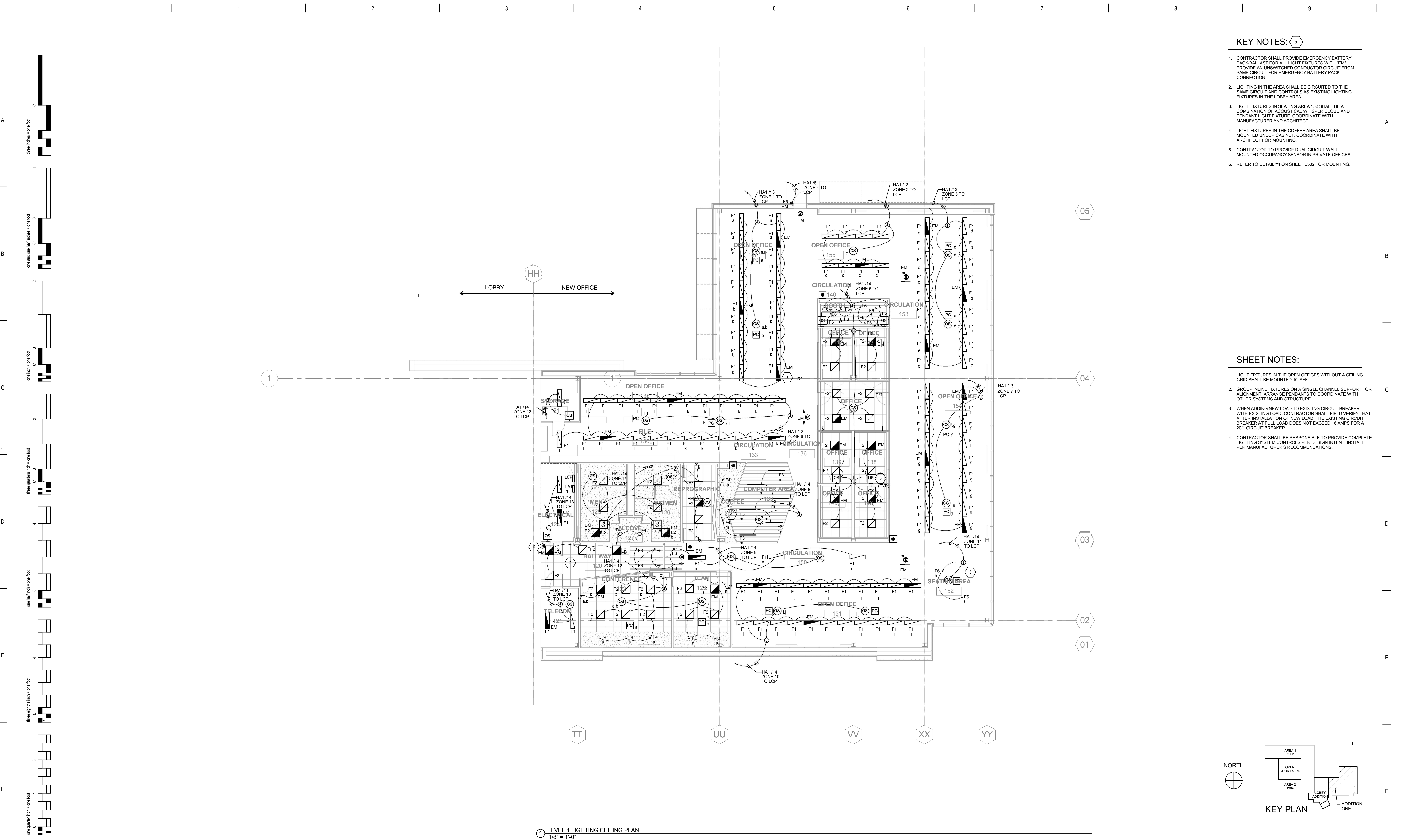
	GROUND TEST WELL
	GROUND CABLE CONNECTION
	GROUND ROD - MIN. 3/4" x 10' LONG
	GROUND PLATE - WALL MOUNT
	GROUND PLATE - FLOOR MOUNT
	AIR TERMINAL - LIGHTNING ARRESTOR
	EQUIPMENT CONNECTION
	DIAMETER
	SQUARE FEET
	POINT OF CONNECTION
	POINT OF DISCONNECTION

ANNOTATION

	DIAMETER
	SQUARE FEET
	POINT OF CONNECTION
	POINT OF DISCONNECTION
	TITLE MARK
	DETAIL OR PLAN NUMBER - 1
	DETAIL OR PLAN REFERENCE LOCATION FOUND IN E-201
	SECTION MARK A-ZT
	SECTION NUMBER - 1
	SECTION FOUND IN E-501
	DETAIL BOUNDARY B
	DETAIL NUMBER - 2
	DETAIL FOUND IN E-201
	SHEET KEYNOTE
	REVISION CLOUD (DELTA 1)
	DETAIL REFERENCE
	DETAIL NUMBER - 1
	DETAIL FOUND IN E-501
	FEEDER TAG



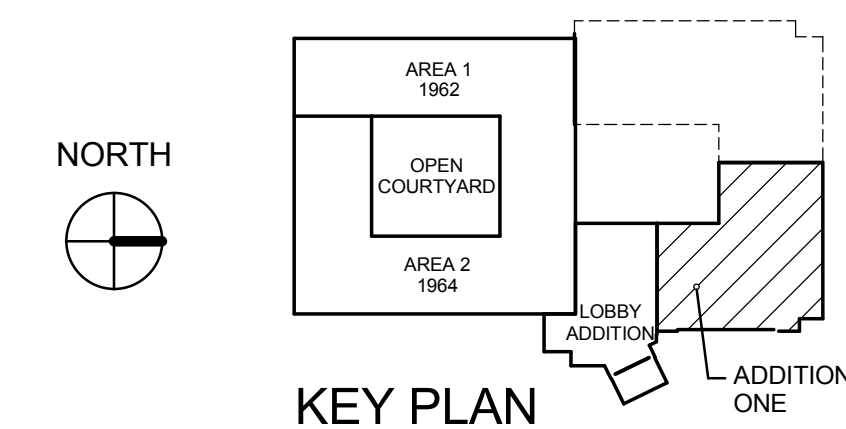
CONSULTANTS:		Stamp and Signature:		ARCHITECT/ENGINEERS:		Drawing Title:		Project Title:		Project Number:	
 <p>SYSKA HENNESSY GROUP A member company of SH Group, Inc.</p> <p>Syska Hennessy Group, Inc. 425 California Street Suite 700 San Francisco, CA 94104 Tel: 415.288.9080 Fax: 415.635.0365 www.syska.com</p>				 <p>ENGINEERS ARCHITECTS ONE KAISER PLAZA SUITE 445 OAKLAND CALIFORNIA 94612 TEL 510.271.6701 FAX 510.271.6707 THE KPA GROUP © THE KPA GROUP 2014 KPA PROJECT NO. 565.00</p>		ELECTRICAL SITE PLAN		ESTABLISH SUNNYVALE R AND D CAMPUS		640-397	
						Approved: Project Director		Location: 1080 INNOVATION WAY, SUNNYVALE, CA 94085		Building Number: 1002	
						VAPAHCS PLANNING AND ENGINEERING		Date: 11/25/2014		Drawing Number: ES100	
								Check: Checker		Dwg. of	
								Drawn: Author		Office of Construction and Facilities Management	
										 <p>VAPAHCS VAPAHCS AFFILIATES Palo Alto Health Care System</p>	






- ## KEY NOTES:
- CONTRACTOR SHALL PROVIDE EMERGENCY BATTERY BACKUP/ALST FOR ALL LIGHT FIXTURES WITH TEMP. PROVIDE AN UNSWITCHED CONDUCTOR CIRCUIT FROM SAME CIRCUIT FOR EMERGENCY BATTERY PACK CONNECTION.
 - LIGHTING IN THE AREA SHALL BE CIRCUITED TO THE SAME CIRCUIT AND CONTROLS AS EXISTING LIGHTING FIXTURES IN THE LOBBY AREA.
 - LIGHT FIXTURES IN SEATING AREA 152 SHALL BE A COMBINATION OF ACOUSTICAL WHISPER CLOUD AND PENDANT LIGHT FIXTURES. COORDINATE WITH MANUFACTURER AND ARCHITECT.
 - LIGHT FIXTURES IN THE COFFEE AREA SHALL BE MOUNTED UNDER CABINET. COORDINATE WITH ARCHITECT FOR MOUNTING.
 - CONTRACTOR TO PROVIDE DUAL CIRCUIT WALL MOUNTED OCCUPANCY SENSOR IN PRIVATE OFFICES.
 - REFER TO DETAIL #4 ON SHEET E502 FOR MOUNTING.

SHEET NOTES:

1. LIGHT FIXTURES IN THE OPEN OFFICES WITHOUT A CEILING GRID SHALL BE MOUNTED 10' AFF.
2. GROUP IN-LINE FIXTURES ON A SINGLE CHANNEl SUPPORT FOR ALIGNMENT. ARRANGE PENDANTS TO COORDINATE WITH OTHER SYSTEMS AND STRUCTURE.
3. WHEN ADDING NEW LOAD TO EXISTING CIRCUIT BREAKER WITH EXISTING LOAD, CONTRACTOR SHALL FIELD VERIFY THAT AFTER INSTALLATION OF NEW LOAD, THE EXISTING CIRCUIT BREAKER AT FULL LOAD DOES NOT EXCEED 16 AMPS FOR A 20% CIRCUIT BREAKER.
4. CONTRACTOR SHALL BE RESPONSIBLE TO PROVIDE COMPLETE LIGHTING SYSTEM CONTROLS PER DESIGN INTENT. INSTALL PER MANUFACTURER'S RECOMMENDATIONS.

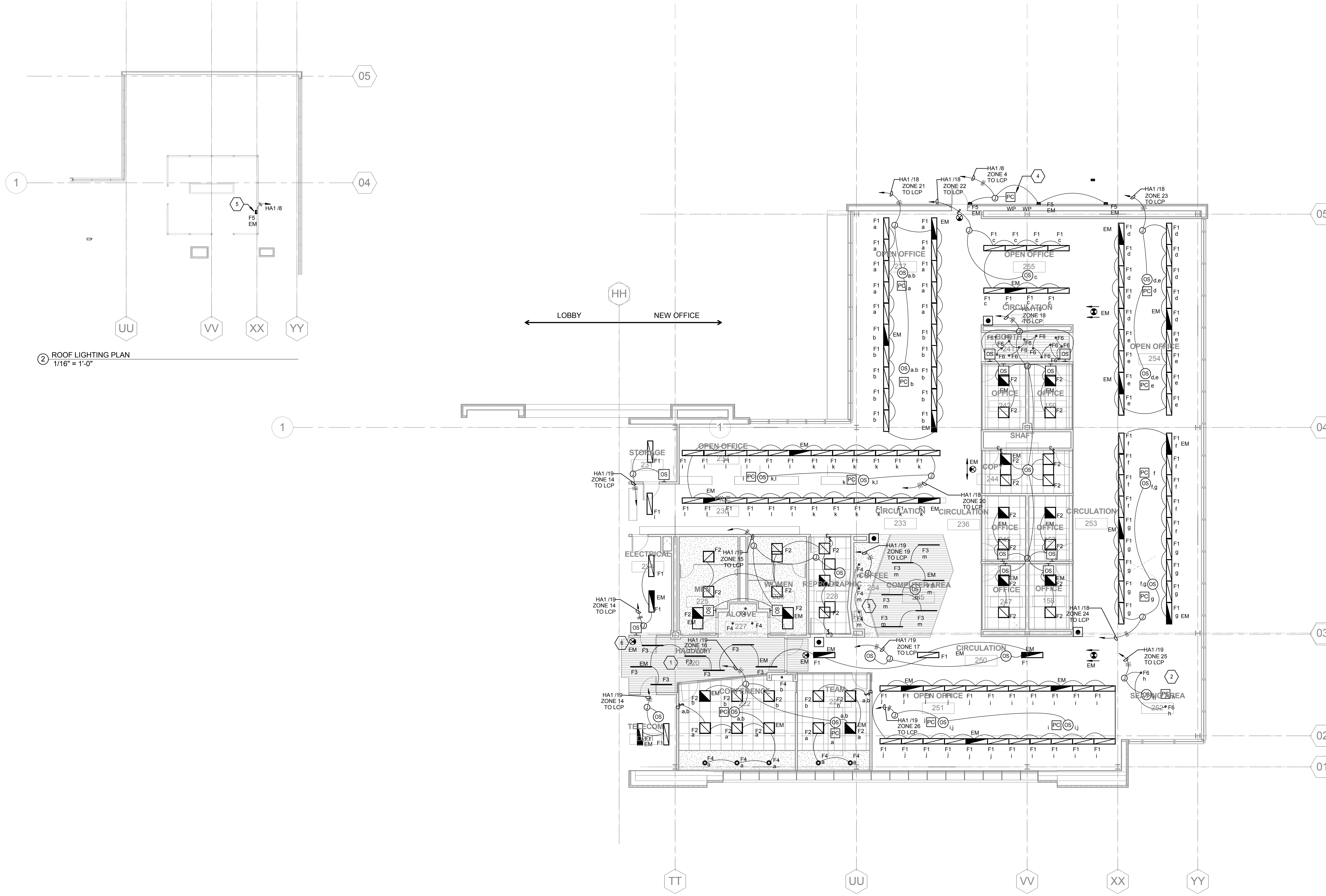


① LEVEL 1 LIGHTING CEILING PLAN
1/8" = 1'-0"

		CONSULTANTS:		Stamp and Signature:		ARCHITECT/ENGINEERS:		Drawing Title:		Project Title:		Project Number:		Office of Construction and Facilities Management	
		<div><p>SYSKA HENNESSY GROUP</p><p>A member company of SH Group, Inc.</p></div> <div>Syska Hennessy Group, Inc. 425 California Street Suite 700 San Francisco, CA 94104 Tel: 415.288.9060 Fax: 415.835.0385 www.syska.com</div>		<div></div>		<div><p>ENGINEERS ARCHITECTS</p><p>ONE KAISER PLAZA SUITE 445 OAKLAND, CALIFORNIA 94612</p><p>TEL 510.271.6701 FAX 510.271.6707</p><p>KPA Project No. 563.00</p></div>		ELECTRICAL LIGHTING FIRST FLOOR PLAN		ESTABLISH SUNNYVALE R AND D CAMPUS		640-397			
								Approved: Project Director		Location: 1080 INNOVATION WAY, SUNNYVALE, CA 94085		Drawing Number:		Dwg. of	
								VAPAHCS PLANNING AND ENGINEERING		Date: 11/25/2014		Check: VS			
Revision		DATE													

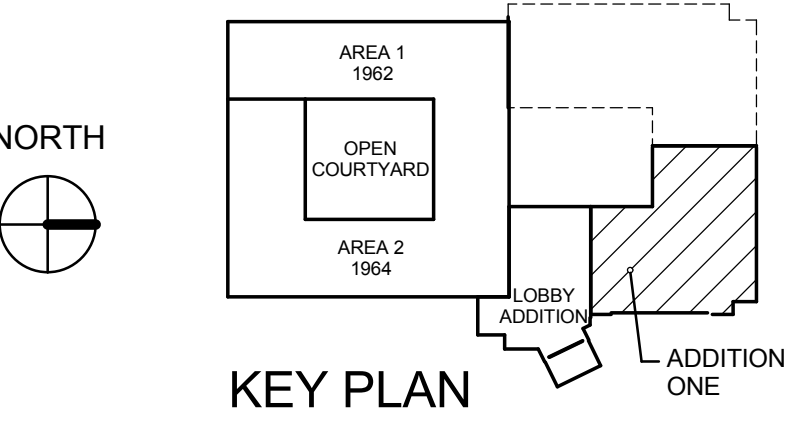
0 6' 1 0 6' 2 0 6' 2 0 6' 4 0 6' 4 0 6' 8 0 4 0 4 16 0 8 4 16

lines inches = one foot
one and one half inches = one foot
one inch = one foot
three quarters inch = one foot
one half inch = one foot
three eighths inch = one foot
one eighth inch = one foot


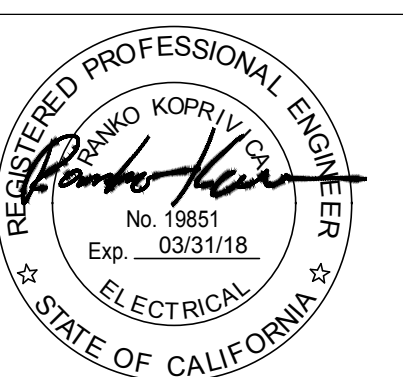




- KEY NOTES:**
1. LIGHT FIXTURE IN THE AREA SHALL BE CIRCUITED TO THE SAME CIRCUIT AND CONTROLS AS EXISTING LIGHTING FIXTURES IN THE LOBBY AREA.
 2. LIGHTING IN SEATING AREA 252 SHALL BE A COMBINATION OF ACOUSTICAL WHISPER CLOUD AND PENDANTS. CONTRACTOR TO COORDINATE WITH MANUFACTURER AND ARCHITECT.
 3. LIGHT FIXTURES IN THE COFFEE AREA SHALL BE MOUNTED UNDER CABINET. COORDINATE WITH ARCHITECT.
 4. CONTRACTOR TO PROVIDE WEATHERPROOF PHOTOCELL. PHOTOCELL SHALL CONTROL ALL EXTERIOR LIGHTING FOR THE STAIRS. PROVIDE 3W/G AND WIRING. COORDINATE WITH MANUFACTURER FOR CONNECTION.
 5. CONTRACTOR TO PROVIDE WEATHERPROOF TIMER SWITCH FOR LIGHT FIXTURE FOR MAINTENANCE.
 6. REFER TO DETAIL #4 ON SHEET E502 FOR MOUNTING.

- SHEET NOTES:**
1. CONTRACTOR SHALL PROVIDE EMERGENCY BATTERY PACK/BALLAST FOR ALL LIGHT FIXTURES WITH "EM". PROVIDE AN UNSWITCHED CONDUCTOR CIRCUIT FROM SAME CIRCUIT FOR EMERGENCY BATTERY PACK CONNECTION.
 2. GROUP INLINE FIXTURES ON A SINGLE CHANNEL SUPPORT FOR ALIGNMENT. ARRANGE PENDANTS TO COORDINATE WITH OTHER SYSTEMS AND STRUCTURE.
 3. WHEN ADDING NEW LOAD TO EXISTING CIRCUIT IN THE LOBBY AREA WITH EXISTING LOAD, CONTRACTOR SHALL FIELD VERIFY THAT AFTER INSTALLATION OF NEW LOAD, THE EXISTING CIRCUIT BREAKER AT FULL LOAD DOES NOT EXCEED 16 AMPS FOR A 20A CIRCUIT BREAKER.
 4. LIGHT FIXTURES IN THE OPEN OFFICES WITHOUT A CEILING GRID SHALL BE PENDANT MOUNTED 10' AFF.
 5. CONTRACTOR SHALL BE RESPONSIBLE TO PROVIDE COMPLETE LIGHTING SYSTEM CONTROLS PER DESIGN INTENT. INSTALL PER MANUFACTURER'S RECOMMENDATIONS.
 6. SEE SHEET EL101 FOR PANELS HA1 AND LCP LOCATIONS.



1 LEVEL 2 LIGHTING CEILING PLAN
1/8" = 1'-0"

CONSULTANTS:  Syska Hennessy Group, Inc. 425 California Street Suite 700 San Francisco, CA 94104 Tel: 415.288.9060 Fax: 415.835.0385 www.syska.com		Stamp and Signature: 		ARCHITECT/ENGINEERS:  ENGINEERS ARCHITECTS ONE KAISER PLAZA SUITE 445 OAKLAND CALIFORNIA 94612 TEL 510.271.6701 FAX 510.271.6707 © THE KPA GROUP 2014 KPA Project No. 563.00		Drawing Title: ELECTRICAL LIGHTING SECOND FLOOR PLAN Approved: Project Director VAPAHCS PLANNING AND ENGINEERING		Project Title: ESTABLISH SUNNYVALE R AND D CAMPUS Location: 1080 INNOVATION WAY, SUNNYVALE, CA 94085 Date: 11/25/2014 Check: VS Drawn: SS		Project Number: 640-397 Building Number: 1002 Drawing Number: EL102 Dwg. of		Office of Construction and Facilities Management 	
--	--	--	--	---	--	---	--	--	--	--	--	--	--

FULLY SPRINKLERED