

ABBREVIATIONS

A	AMPERE
AFF	ABOVE FINISHED FLOOR
ALM	ALARM
AWG	AMERICAN WIRE GAUGE
BAS	BUILDING AUTOMATION SYSTEM
BLDG	BUILDING
CAT	CATEGORY
C	CONDUIT
CL	CLOSET
COR	CONTRACTING OFFICER'S REPRESENTATIVE
DN	DOWN
DWG	DRAWING
E	EXISTING
EA	EACH
EC	ELECTRICAL CONTRACTOR
EF	ENTRANCE FACILITY
ELEC	ELECTRICAL
EQUIP	EQUIPMENT
ER	EXISTING RELOCATED
EX	EXISTING TO REMAIN
FA	FIRE ALARM
FAS	FIRE ALARM SYSTEM
FBO	FURNISHED BY OTHERS
FL	FLOOR
FT	FEET OR FOOT
G	GROUND
HC	HUNG OR SUSPENDED CEILING
HCC	HORIZONTAL CONNECTION CABINET
HCP	HORIZONTAL CONNECTION PANEL
HZ	HERTZ
IDF	INTERMEDIATE DISTRIBUTION FRAME (INCHES)
IN	JUNCTION BOX
JB	JUNCTION BOX
MAX	MAXIMUM
MECH	MECHANICAL
MER	MECHANICAL EQUIPMENT ROOM
MIN	MINIMUM
MM	MULTIMODE FIBER
MTD	MOUNTED
NT	NOT IN CONTRACT
NTS	NOT TO SCALE
OC	ON CENTER
OD	OUTSIDE DIAMETER
O&T	OFFICE OF INFORMATION & TECHNOLOGY
PB	PULL BOX
PWR	POWER
R	EXISTING TO BE REMOVED
REX	RELOCATE EXISTING
RECEPT	RECEPTACLE
REQ	REQUIRED
RGS	RIGID GALVANIZED STEEL
SM	SINGLE-MODE FIBER
SOW	SCOPE OF WORK
SPEC	SPECIFICATION
TBD	TO BE DETERMINED
TC	TECHNOLOGY CENTER
TEL	TELEPHONE
TER	TELECOMMUNICATIONS EQUIPMENT ROOM
TR	TELECOMMUNICATIONS ROOM
TV	TELEVISION
TVSS	TRANSIENT VOLTAGE SURGE SUPPRESSION
TYP	TYPICAL
U.O.N.	UNLESS OTHERWISE NOTED
V	VOLT OR VOLTAGE
VA	VOLT AMPERE
W	WALL PHONE
WAP	WIRELESS ACCESS POINT
WP	WEATHERPROOF

SYMBOLS (AS APPLICABLE)

	WALL FLUSH MOUNTED OUTLET IN A DOUBLE GANG 4S BACKBOX WITH SINGLE GANG TRIM PLATE SUPPORTED BY 1-1/4" CONDUIT. PROVIDED AND INSTALLED BY E.C. 4 JACKS - 4-PAIR UTP CATEGORY 6 CABLES EACH TERMINATED ON A 8P8C MODULAR JACK (RJ45) WITH A 6-PORT FACEPLATE. TYPICAL.
	FURNITURE MOUNTED OUTLET WITH A MANUFACTURER FACEPLATE. SUPPORTED BY 1-1/4" CONDUIT. PROVIDED AND INSTALLED BY E.C. 4 JACKS - 4-PAIR UTP CATEGORY 6 CABLES EACH TERMINATED ON A 8P8C MODULAR JACK (RJ45)
	FLOOR FLUSH MOUNTED OUTLET IN A DOUBLE GANG 4S BACKBOX WITH SINGLE GANG TRIM PLATE SUPPORTED BY 1-1/4" CONDUIT. PROVIDED AND INSTALLED BY E.C. 4 JACKS - 4-PAIR UTP CATEGORY 6 CABLES EACH TERMINATED ON A 8P8C MODULAR JACK (RJ45)
	SURFACE CEILING MOUNTED OUTLET IN A DOUBLE GANG 4S BACKBOX WITH SINGLE GANG TRIM PLATE SUPPORTED BY 1-1/4" CONDUIT. PROVIDED AND INSTALLED BY E.C. 1 JACK - 4-PAIR UTP CATEGORY 6 CABLE TERMINATED ON A 8P8C MODULAR JACK (RJ45)
	WALL FLUSH MOUNTED OUTLET IN A DOUBLE GANG BACKBOX WITH SINGLE GANG TRIM PLATE (FOR WALL MOUNTED TELEPHONE) 1 JACK - 4-PAIR UTP CATEGORY 6 CABLE TERMINATED ON A 8P8C MODULAR JACK (RJ45)
	WALL MOUNTED DATA OUTLET IN A DOUBLE GANG 4S BACKBOX WITH SINGLE GANG TRIM PLATE SUPPORTED BY 1-1/4" CONDUIT. PROVIDED AND INSTALLED BY E.C. X DENOTES QTY OF CAT 6 CABLES. 1 JACK PER CAT 6 CABLE. 4-PAIR UTP CATEGORY 6 CABLE EACH TERMINATED ON A 8P8C MODULAR JACK (RJ45)
	WALL MOUNTED DATA OUTLET INSTALLED WITHIN THE INTERIOR OF THE BUILDING. PROVIDE CAT 6 PATCH CORD FOR THE INTO CAMERA. 1 JACK - 4-PAIR UTP CATEGORY 6 CABLE EACH TERMINATED ON A 8P8C MODULAR JACK (RJ45)
	EXTERIOR PTZ POSITION CCTV CAMERA PROVIDE (1) DATA PORT FOR CONNECTIVITY, 1 JACK: 4-PAIR UTP CATEGORY
	EXTERIOR FIXED POSITION CCTV CAMERA PROVIDE (1) DATA PORT FOR CONNECTIVITY, 1 JACK: 4-PAIR UTP CATEGORY
	INTERIOR FIXED POSITION CCTV CAMERA PROVIDE (1) DATA PORT FOR CONNECTIVITY, 1 JACK: 4-PAIR UTP CATEGORY
	CARD READER - CONFIRM HEIGHT AND LOCATION WITH COR AND ARCHITECT.
	SECURITY CONTROL PANEL PROVIDE SINGLE DATA PORT FOR CONNECTIVITY PROVIDE (1) 20A DEDICATED CIRCUIT WITH ISOLATED GROUND
	LOCK POWER SUPPLY PROVIDE (1) 20A DEDICATED CIRCUIT WITH ISOLATED GROUND
	FLUSH CEILING LOUDSPEAKER. X-XY-Z DENOTES FLOOR LEVEL, PAGING ZONE AND SPEAKER #. SEE BELOW
	12" WIDE LADDER RACK. MOUNTED 6" ABOVE THE TELECOMMUNICATION RACK. TYPICAL
	7" H 19" TELECOMMUNICATION TWO-POST RACK. TYPICAL
	6" WIDE VERTICAL WIRE MANAGER. TYPICAL
	10" WIDE VERTICAL WIRE MANAGER. TYPICAL
	TELECOMMUNICATION GROUNDING BUS BAR MOUNTED 6" BELOW LADDER RACK.

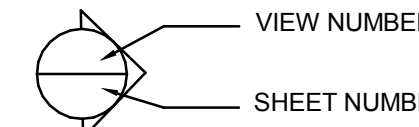
MISCELLANEOUS

DRAWING REFERENCE AND ID SYMBOL

PAGING ZONES

WXY-Z	W DENOTES BUILDING PHASE 2 = PHASE II	Y DENOTES PAGING ZONE 1 = PUBLIC ZONE 1 2 = PUBLIC ZONE 2 3 = PUBLIC ZONE 3	Z DENOTES SPEAKER NUMBER 1 = SPEAKER 1 2 = SPEAKER 2 : : # = SPEAKER #
-------	--	--	---

ELEVATION SYMBOL



OTHER OUTLETS

	CONVENIENCE DUPLEX RECEPTACLE
	DEDICATED SECURITY DUPLEX RECEPTACLE
	QUAD RECEPTACLE
	DUPLEX AC POWER OUTLET 120V, 20A, UNLESS OTHERWISE NOTED. 'CLK' INDICATES RECESSED CLOCK-TYPE OUTLET
	WALL MOUNTED JUNCTION BOX (SUBSCRIPT DENOTES NUMBER OF GANG). MOUNTED AT SAME HEIGHT AS ASSOCIATED AV INPUT PANEL, TV INPUT PANEL, OR VOLUME / SIGNAL SELECTION PANEL UNLESS OTHERWISE NOTED. PROVIDE 1" CONDUIT TO 6" ABOVE FINISHED CEILING SPACE FROM WALL BOX.

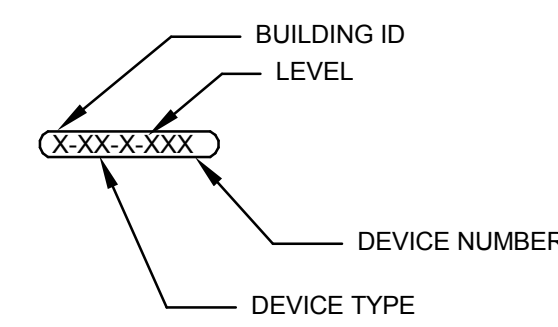
DIVISION OF WORK

- PROVIDE AND INSTALL ALL CONDUIT, RACEWAY, BACKBOXES AND ELECTRICAL POWER REQUIRED FOR IMPLEMENTATION OF THE TELECOMMUNICATIONS AND SECURITY SYSTEMS. COORDINATE FINAL LOCATIONS, SIZES AND QUANTITIES OF CONDUIT, RACEWAYS AND BACKBOXES WITH COR AND ARCHITECT.
- COORDINATE ALL POWER REQUIREMENTS.
- PROVIDE AND INSTALL ALL SECURITY DEVICES, PANELS, CABLING AND OTHER DEVICES REQUIRED FOR IMPLEMENTATION OF THE SECURITY SYSTEM. T.C. TO INSTALL AND TERMINATE CAT 6 CABLING FOR CAMERAS.
- COORDINATE FINAL LOCATIONS, SIZES AND QUANTITIES OF CONDUIT, RACEWAYS AND BACKBOXES WITH THE COR AND ARCHITECT.
- INSTALL AND INSTALL ALL DATA OUTLETS.
- FURNISH AND INSTALL ALL PATCH CORDS.
- CONTRACTOR TO GROUND ALL OF THE EQUIPMENT WITHIN THE IDF ROOM. CONTRACTOR TO CONNECT TOBB TO MAIN BUILDING GROUNDING SYSTEM.
- CONTRACTOR TO COMPLY AND CERTIFY ALL SEISMIC REQUIREMENTS FOR ZONE 4.
- GENERAL CONTRACTOR TO ENSURE ALL CONTRACTORS HAVE ENTIRE CONSTRUCTION DOCUMENTS SHOWN HERE.
- CONTRACTOR SHALL PROVIDE AND INSTALL WIRELESS ACCESS POINT CABLING ONLY. THE VA WILL PATCH AND INSTALL ACCESS POINT EQUIPMENT.

DEVICE NUMBERING AND LABELS

DRAWING REFERENCE AND ID TAGS

DEVICE LABEL



X-XX-X-XXX

Building (If Applicable)	Device Type	Level	Device Number
A	Video Surveillance	↑ Levels Below Grade	001-999
B	VC Camera	LL Lower Level	
C	VW Video Workstation	1 Ground Level	
D	VM Monitor	2 Levels Above Grade	
E	Access Control	3	
	AP Access Control Point	4	
	AH Access Head End		
	AW Access System Workstation	↓	
	AM Access Monitor		
	Intrusion Detection		
	AZ Alarm Point/Zone		
	AD Alerting Device		
	KP System Keypad		
	ASP Alarm System Panel		
	ANP Annunciation Panel		
	Intercom		
	IC Intercom Location		
	VI Video Intercom Location		
	IM Intercom Master Station		
	IH Intercom Head End		
	Control Infrastructure		
	SCMD Command Center - Contains multiple device types. Details provided in room layout.		
	SIDF Security IDF - security dedicated IDF. Details provided in room layout.		
	SMDF Security MDF - security dedicated MDF. Details provided in room layout.		
	IDF Telecomm IDF - can be used to contain security devices. Details provided in room layout.		
	MDF Telecomm MDF - can be used to contain security devices. Details provided in room layout.		
	ML Monitoring Location - Central monitoring location off of the SCMD. May include AW, AM, VM, VW, etc.		

CABLE ID LEGEND

LTR	DESCRIPTION	DEVICE/USE	REFERRED CABLE
a	4C/18 AWG UNSHIELDED	LOCK POWER	BELDEN 658AFS GY
b	4C/22 AWG UNSHIELDED	REX/SPARE	BELDEN 658AFS BL
c	6C/22 AWG OVERALL SHIELD	CARD READER	BELDEN 658AFS OR
d	2C/22 AWG UNSHIELDED	DOOR CONTACT	BELDEN 658AFS WH
e	2C/18 AWG UNSHIELDED	POWER JUMPER	BELDEN 6320UE
g	1C/6 AWG GREEN	GROUNDING	GENERIC
h	4P/23 AWG UTP CAT 6	IP SECURITY DEVICE	REF TO DIV-27
p	8P8C 23 AWG UTP CAT 6	LAN/IP PATCH CORD	REF TO DIV-27
s	RG59+2C/18 AWG SIAMSESE COAX	ANALOG CCTV CAMERA	BELDEN 649948
x	RG59+2C/18+1PR/23 AWG	ANALOG PTZ CAMERA	BELDEN 600PTZ

GENERAL NOTES

- CONTRACTOR IS RESPONSIBLE FOR ALL OF THE WORK DESCRIBED IN THESE CONTRACT DRAWINGS AND SPECIFICATIONS.
- THE CONTRACTOR SHALL ADHERE TO ALL BUILDING RULES AND REGULATIONS.
- ALL CABLES SHALL BE HOMERUN FROM THE COMMUNICATION OUTLETS TO THE TELECOM ROOM IN SPACE ABOVE HUNG CEILING OR IN DESIGNATED PATHWAYS THROUGH FLOOR BELOW OR THROUGH OPEN CEILING AREAS.
- THESE COMMUNICATIONS DRAWINGS ARE TO BE USED IN CONJUNCTION WITH THE COMMUNICATIONS SPECIFICATIONS DOCUMENT. SHOULD THERE BE ANY DISCREPANCIES BETWEEN THE DRAWINGS AND THE SPECIFICATIONS, THE CONTRACTOR SHALL BRING IT TO THE IMMEDIATE ATTENTION OF THE COR.
- THE CONTRACTOR SHALL BE RESPONSIBLE FOR SURVEYING THE BUILDING AND LOCATING ALL BACKBOXES, CONDUITS, STUB-UPS DESIGNATED FOR THE SEQUENCE OF WORK WITH THE COR.
- ALL CONDUITS AND SLEEVES DESIGNATED FOR COMMUNICATIONS USE, WHETHER THEY ARE UTILIZED BY THE CONTRACTOR OR NOT, SHALL BE FIRE STOPPED.
- THE CONTRACTOR SHALL BE RESPONSIBLE FOR COORDINATION WITH OTHER TRADES AND DRAWINGS. FURTHERMORE, THE CONTRACTOR SHALL COORDINATE THE SEQUENCE OF WORK WITH THE COR.
- BACKBOXES, CONDUITS, STUB-UPS SHALL BE PROVIDED.
- ALL CABLES SHALL BE INSTALLED IN CONDUIT AS DETAILED. WHERE INSTALLED ABOVE A SUSPENDED CEILING, CABLE MAY BE INSTALLED WITHOUT RACEWAY FROM THE CONDUIT STUB-UP TO THE NEAREST CABLE TRAY OR TELECOM ROOM UNLESS A GAP OF 48" EXISTS. OTHERWISE SUPPORT WILL BE REQUIRED. ALL CABLE INSTALLED ABOVE HUNG CEILING SHALL BE SUPPORTED WITH APPROVED CABLE SUPPORT DEVICES SUCH AS COMMUNICATIONS RATED J-HOOKS. ALL CABLES RUN ABOVE SUSPENDED CEILING SHALL BE INSTALLED WITH AT LEAST 3" OF CLEAR VERTICAL SPACE ABOVE ANY COMPONENT OF THE SUSPENDED CEILING AND SHALL BE INSTALLED WITH MINIMUM OF 12" CLEAR OF FLUORESCENT LIGHT BALLASTS.
- THE ENTIRE CABLE PLANT SHALL BE TESTED AS OUTLINED IN THE SPECIFICATIONS.
- THE CONTRACTOR SHALL PROVIDE ALL CABLE, HARDWARE AND EQUIPMENT SHOWN ON THESE DRAWINGS EXCEPT WHERE OTHERWISE NOTED.
- THE CONTRACT DRAWINGS OF ALL TRADES INCLUDING ARCHITECTURAL, STRUCTURAL, HVAC, ELECTRICAL, PLUMBING, FIRE PROTECTION, IT, SECURITY ETC ARE ALL PART OF THIS PACKAGE. THE CONTRACTOR MUST REVIEW THE DRAWINGS OF ALL TRADES AND OBTAIN PERTINENT INFORMATION THAT PERTAINS TO THE TELECOM WORK AND IS SHOWN OR INDICATED ON DRAWINGS. NO EXTRAS WILL BE PERMITTED DUE TO THE FAILURE OF THE CONTRACTOR TO COMPLY WITH THIS REQUIREMENT.
- THE CONTRACTOR MUST MAINTAIN A RUNNING UPDATE OF ALL FIELD OR CONTRACT DOCUMENT CHANGES AND UPDATE HIS 'AS BUILT' DRAWINGS AS AN ONGOING PROCESS.
- THE CONTRACTOR SHALL COORDINATE WITH ARCHITECT AND COR FOR MOUNTING HEIGHTS OF ALL COMMUNICATIONS OUTLETS. UNLESS DIRECTED OTHERWISE, ALL WALL MOUNTED COMMUNICATIONS OUTLETS SHALL BE MOUNTED 18 INCHES ABOVE FINISHED FLOOR. UNLESS DIRECTED OTHERWISE, WALL MOUNTED TELEPHONE OUTLETS SHALL BE MOUNTED 42 INCHES ABOVE FINISHED FLOOR.
- ALL EQUIPMENT, CABLING, RACEWAY, ETC. SHALL BE GROUNDED IN ACCORDANCE WITH THE SPECIFICATIONS AND TIA/EIA-607-B. PROVIDE GROUND CONDUCTORS, GROUND CLAMPS, COMPRESSION TAPS, LUGS, ETC. AS REQUIRED FOR CONNECTION TO THE TELECOMMUNICATIONS GROUNDING AND BONDING SYSTEM (AS REQUIRED). TELECOMMUNICATIONS GROUNDING AND BONDING SYSTEM SHALL BE PROVIDED, INCLUDING BUT NOT LIMITED TO: BONDING CONDUCTOR FOR TELECOMMUNICATIONS, TELECOMMUNICATIONS MAIN GROUNDING BUSBAR, TELECOMMUNICATIONS BONDING BACKBONE, TELECOMMUNICATIONS GROUNDING BUSBAR(S), GROUNDING EQUALIZER AND BONDING CONDUCTORS TO BUILDING STEEL (WHERE APPLICABLE), POWER PANELS (WHERE APPLICABLE) AND CONDUITS.
- UNLESS OTHERWISE SPECIFIED, ALL CONDUIT TO BE 1-1/4" ELECTROMETALLIC TUBING (EMT) AND RUN WITHIN WALLS.
- DOOR DETAILS ARE TYPICAL FOR CONDUIT AND BACK BOX EMT REQUIREMENTS. REFER TO FLOOR PLAN FOR ACTUAL DEVICE LOCATION AT EACH DOOR.
- ALL JUNCTION BOXES SHALL BE MOUNTED ON THE PROTECTED SIDE OF THE DOOR. MOUNT BOX SECURELY ON CEILING SLAB OR ON WALL MINIMUM TWELVE INCHES ABOVE DOOR. BOX COVER TO BE ACCESSIBLE. COORDINATE LOCATION WITH ALL TRADES.
- RECESSED CONTACTS SHALL BE INSTALLED FOUR INCHES FROM LATCH SIDE OF DOOR. HANDIBOX SHALL BE CENTERED ON CONTACT LOCATION. WIRING FOR DEVICES ON DOUBLE DOORS SHALL BE RUN THROUGH HOLLOW METAL FRAMES.
- CONTRACTOR TO PROVIDE STRIKE COVER PLATE WHERE NECESSARY. COORDINATE FINISH AND STYLE WITH ARCHITECT.
- ALL DOOR AND FRAME PREPARATION TO BE DONE BY CONTRACTOR. COORDINATE AS REQUIRED.
- FOR INSTALLATION OF ELECTROMAGNETIC LOCKS, ELECTRIFIED MORTISE LOCKS AND ELECTRICAL STRIKES, FOLLOW MANUFACTURER'S INSTRUCTIONS.
- ALL DOOR HARDWARE AND SECURITY RELATED DOOR HARDWARE TO BE SELECTED. COORDINATE COLOR AND FINISH REQUIREMENTS AS NECESSARY.
- SECURITY DEVICES SHALL BE MOUNTED ON BACKBOXES, AS SHOWN IN INSTALLATION DETAILS, UNLESS OTHERWISE NOTED. CONDUITS, PULL STRINGS, BACKBOXES AND BUSHINGS SHALL BE PROVIDED AND INSTALLED.
- CONTRACTOR SHALL COORDINATE FINAL QUANTITIES, LOCATIONS AND STYLES WITH COR AND ARCHITECT.
- ALL SECURITY DATA OUTLETS TO CONNECT TO SECURITY PATCH PANEL AND SWITCH. SEE TELECOMMUNICATIONS DRAWINGS FOR MORE DETAILS.
- CONTRACTOR TO PROVIDE AND INSTALL LADDER RACK WITHIN THE IDF ROOMS.

FULLY SPRINKLERED

CONSULTANTS:



Syska Hennessy Group, Inc.
425 California Street
Suite 700
San Francisco, CA 94104
Tel: 415.288.9060
Fax: 415.835.0385
www.syska.com

Stamp and Signature:



ARCHITECT/ENGINEERS:



ENGINEERS ARCHITECTS
ONE KAISER PLAZA SUITE 445
OAKLAND CALIFORNIA 94612
TEL 510.271.6701 FAX 510.271.6707
© THE KPA GROUP 2014
KPA Project No. 563.00

Drawing Title:

TELECOMMUNICATIONS SYMBOLS, NOTES AND ABBREVIATIONS

Approved: Project Director

VAPAHS PLANNING AND ENGINEERING

Project Title:

ESTABLISH SUNNYVALE R AND D CAMPUS

Location:
1080 INNOVATION WAY, SUNNYVALE, CA 94085

Date:
11/25/2014

Check:
HC

Drawn:
PMG

Project Number:

640-397
Building Number:
1002

Drawing Number:
T001

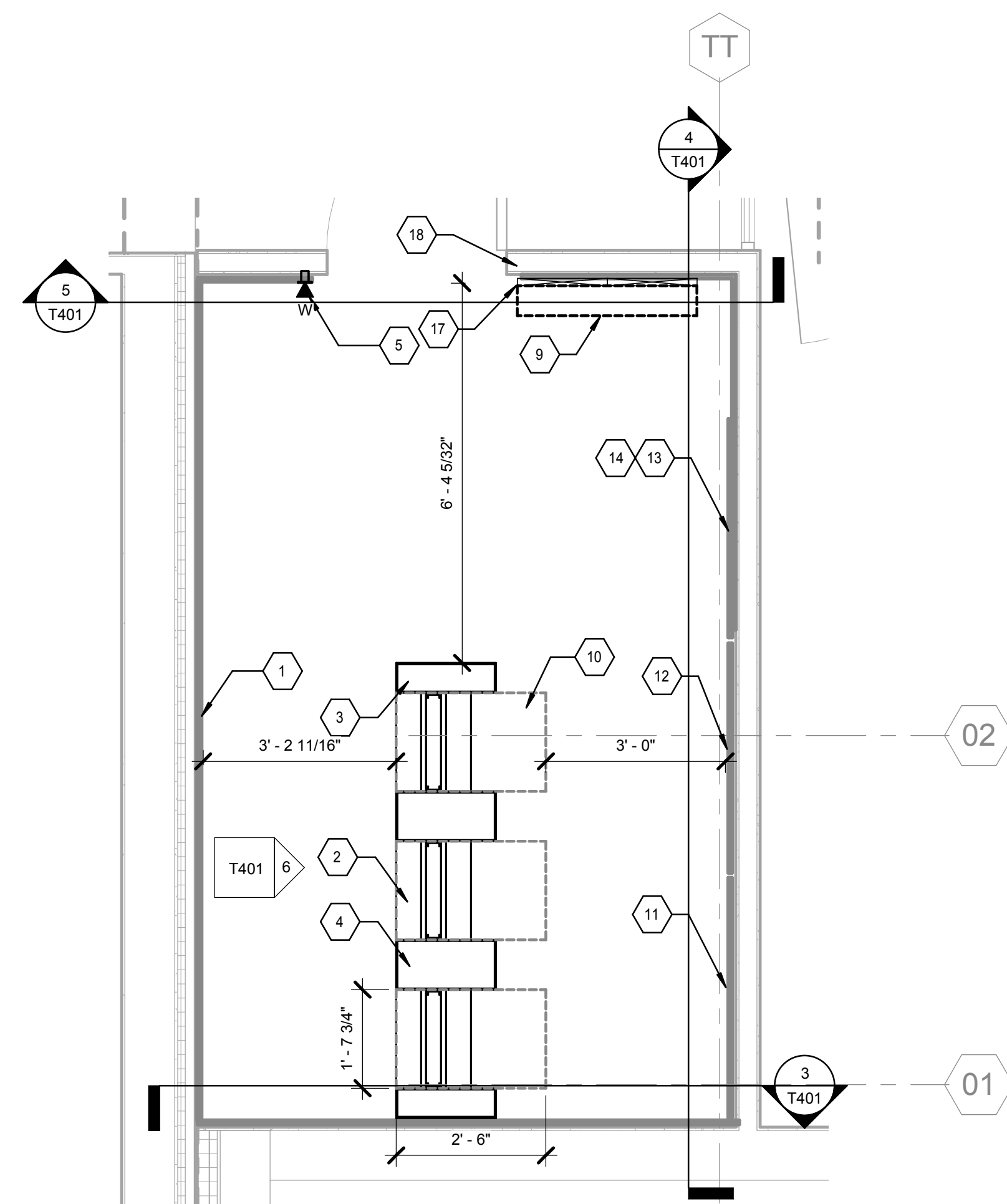
Dwg. of

Office of Construction and Facilities Management

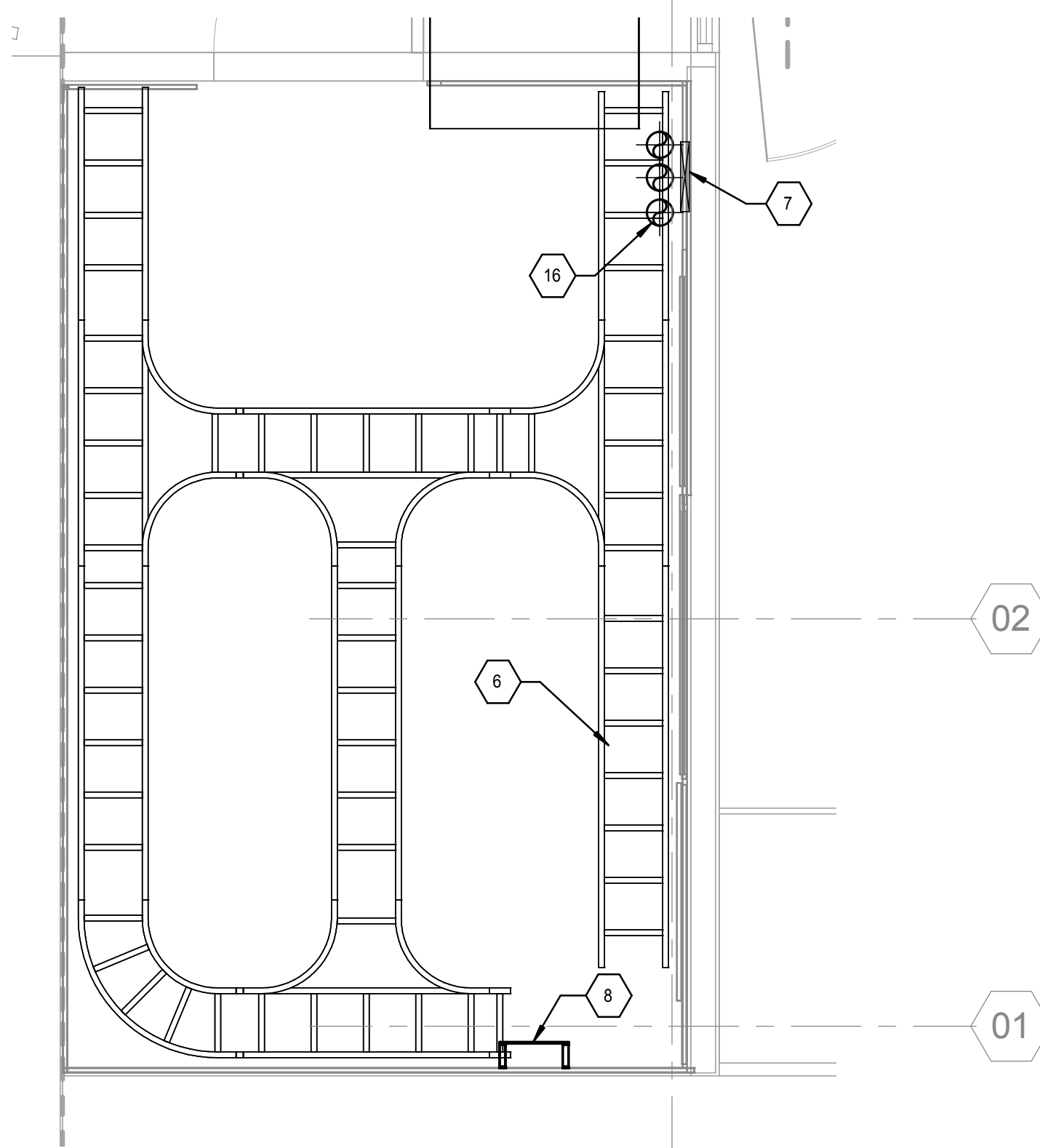


KEY NOTES:

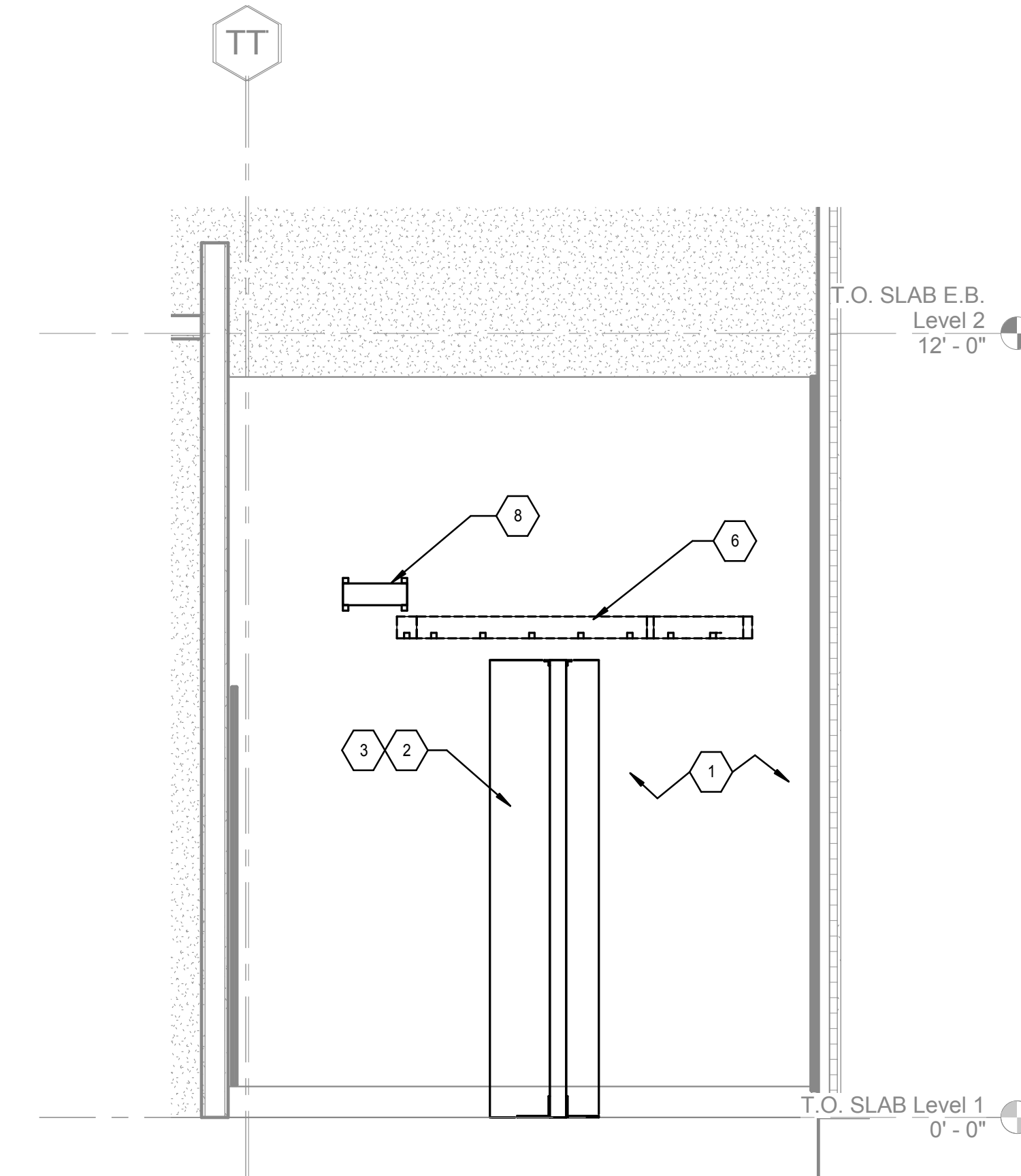
1. 8' H X 4' W X 3/4" AC RATED PLYWOOD MOUNTED 8" AFF. PAINTED WHITE WITH FIRE RETARDED PAINT. TYPICAL.
2. 7' H 19" 2-POST EQUIPMENT RACK. TYPICAL.
3. 6" WIDE VERTICAL WIRE MANAGER. TYPICAL.
4. 10" WIDE VERTICAL WIRE MANAGER. TYPICAL.
5. WALL TELEPHONE.
6. 12" WIDE LADDER RACK MOUNTED 8" AFF. TYPICAL.
7. 12" WIDE VERTICAL LADDER RACK. TYPICAL.
8. TELECOMMUNICATIONS GROUNDING BUS BAR. CONNECTION TO BUILDING GROUNDING SYSTEM BY E.C.
9. 36" X 6" W FLOOR OPENING FOR WALKER DUCT SOLUTION. PROVIDE FIRE PROOFING AS REQUIRED TO MAINTAIN FIRE RATING.
10. 30" X 19" W ACTIVE ELECTRONIC CLEARANCE.
11. TELEPHONE TERMINATION WALL FIELD.
12. SECURITY PANEL.
13. CATV.
14. PAGING PANEL.
15. VOICE/DATA OUTLET.
16. (3) 4" CONDUIT SLEEVES FOR VERTICAL DISTRIBUTION. TYPICAL.
17. 8" WIDE VERTICAL LADDER RACK. TYP.
18. 36" WALKER TRENCH DUCT.
19. 1 RU FIBER OPTIC CABLING ENCLOSURE FOR SINGLEMODE AND MULTIMODE OM4 50 MICRON.
20. 1 RU HORIZONTAL WIRE MANAGER. TYP.
21. 1 RU 48-PORT CAT 6 COPPER PATCH PANEL. TYP.
22. 2 RU HORIZONTAL WIRE MANAGER. TYP.



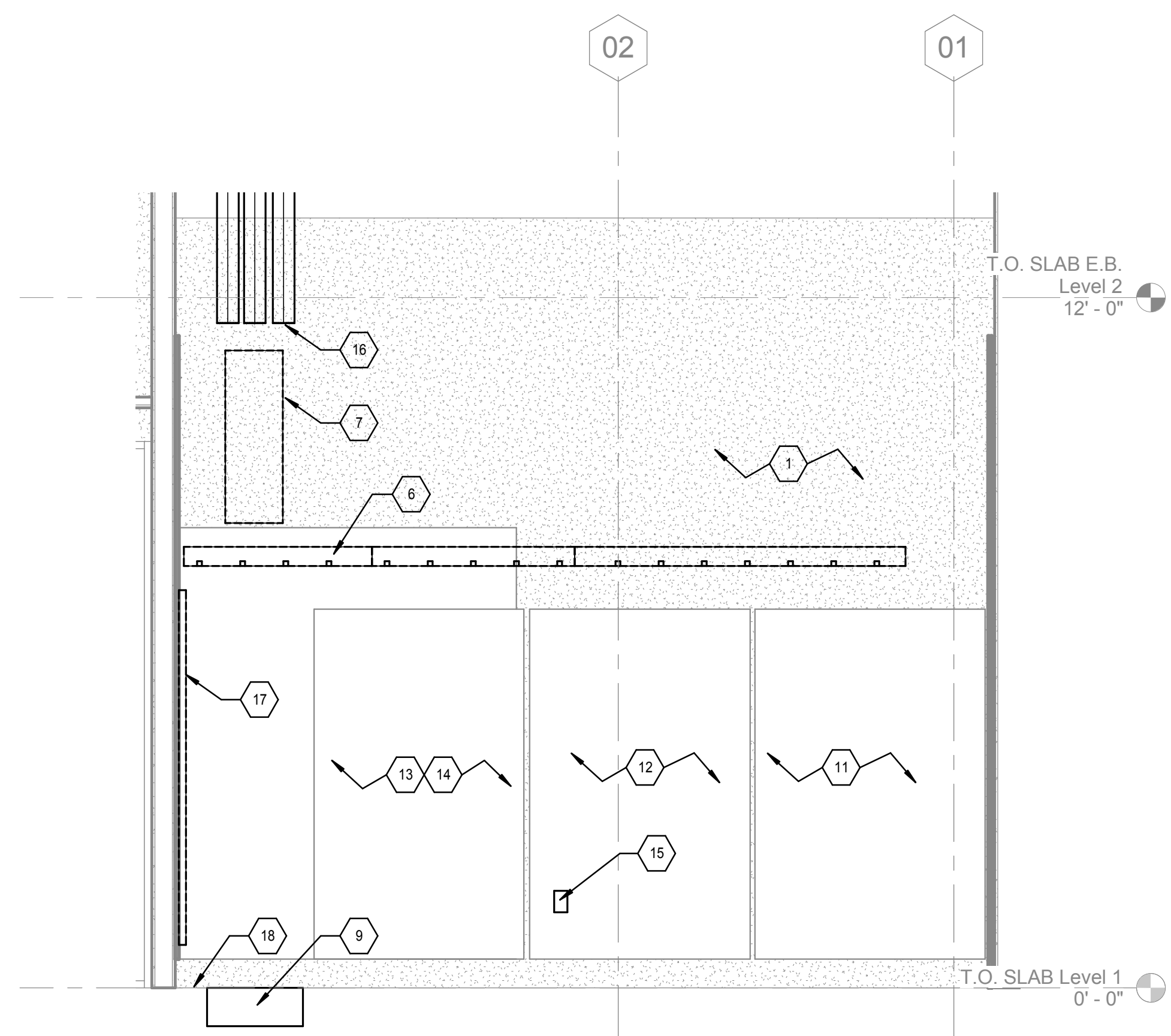
LEVEL 1 ENLARGED TELECOM ROOM - EQUIPMENT PLAN
1/2" = 1'-0"



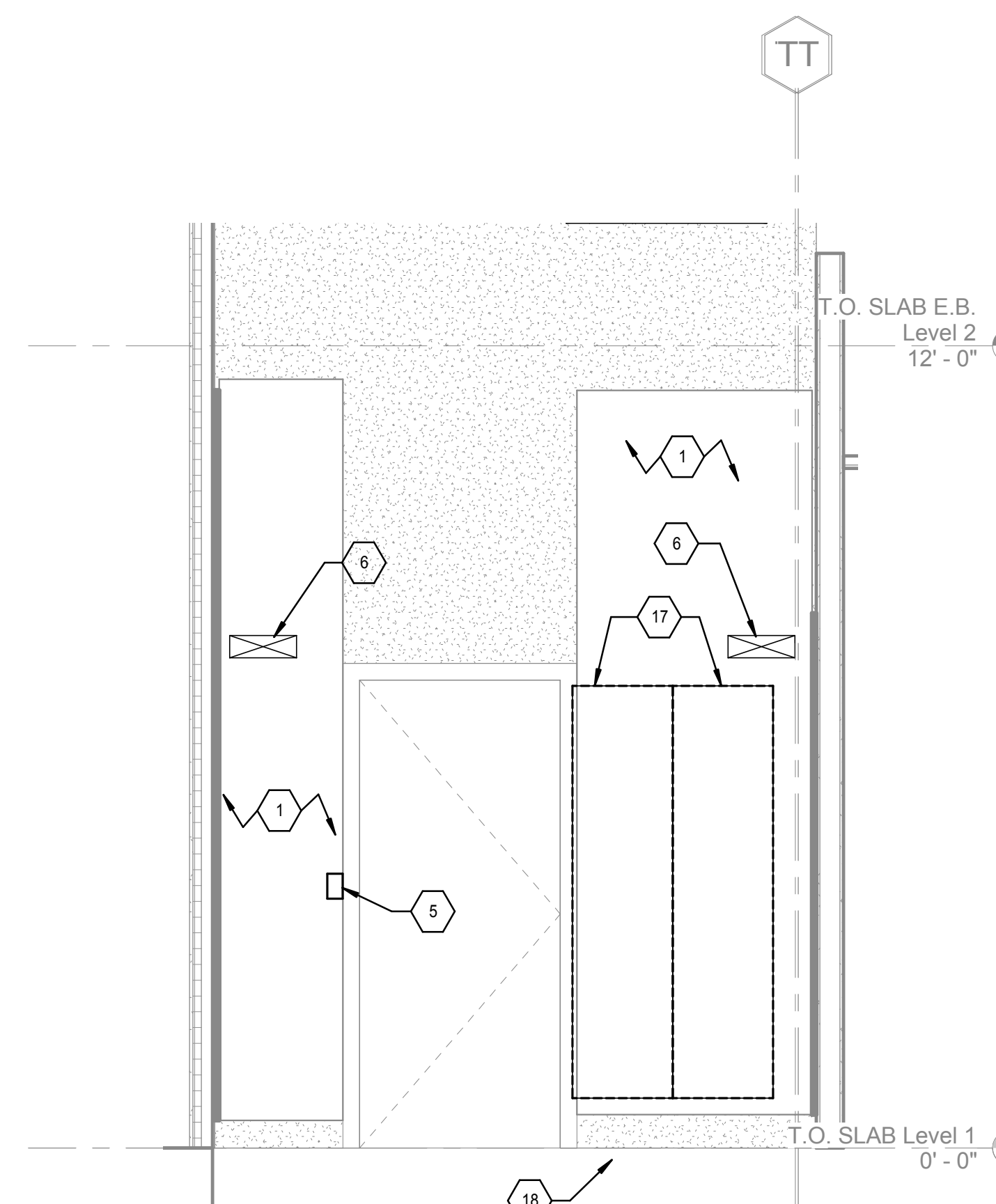
LEVEL 1 ENLARGED TELECOM ROOM - CABLE TRAY LAYOUT
1/2" = 1'-0"



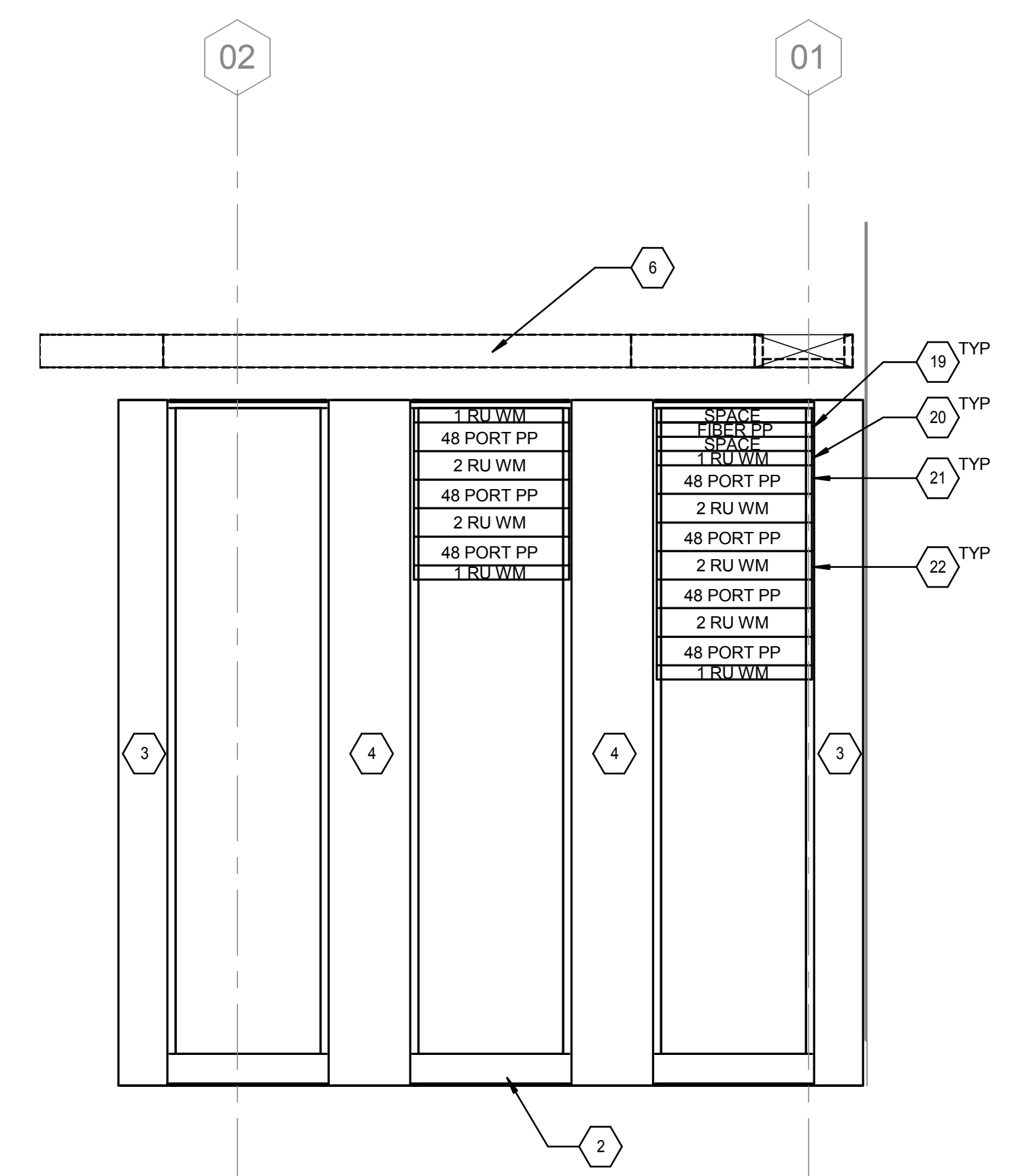
LEVEL 1 ENLARGED TELECOM ROOM - WALL ELEVATION 1
1/2" = 1'-0"



LEVEL 1 ENLARGED TELECOM ROOM - WALL ELEVATION 2
1/2" = 1'-0"



LEVEL 1 ENLARGED TELECOM ROOM - WALL ELEVATION 3
1/2" = 1'-0"



LEVEL 1 ENLARGED TELECOM ROOM - RACK ELEVATION
3/4" = 1'-0"

Revision	DATE

CONSULTANTS:

SYSKA HENNESSY GROUP
A member company of SH Group, Inc.

Syska Hennessy Group, Inc.
425 California Street
Suite 700
San Francisco, CA 94104
Tel: 415.288.9060
Fax: 415.835.0385
www.syska.com

Stamp and Signature:

ARCHITECT/ENGINEERS:

KPA ENGINEERS ARCHITECTS
ONE KAISER PLAZA SUITE 445
OAKLAND CALIFORNIA 94612
TEL 510.271.6701 FAX 510.271.6707
© THE KPA GROUP 2014
KPA Project No. 563.00

Drawing Title:
TELECOMMUNICATIONS ENLARGED TELECOM ROOM 121 PLAN

Approved: Project Director
VAPAHCS PLANNING AND ENGINEERING

Project Title:
ESTABLISH SUNNYVALE R AND D CAMPUS

Location:
1080 INNOVATION WAY, SUNNYVALE, CA 94085

Date: 11/25/2014
Check: HC
Drawn: PMG

Project Number: 640-397
Building Number: 1002
Drawing Number: T401
Dwg. of

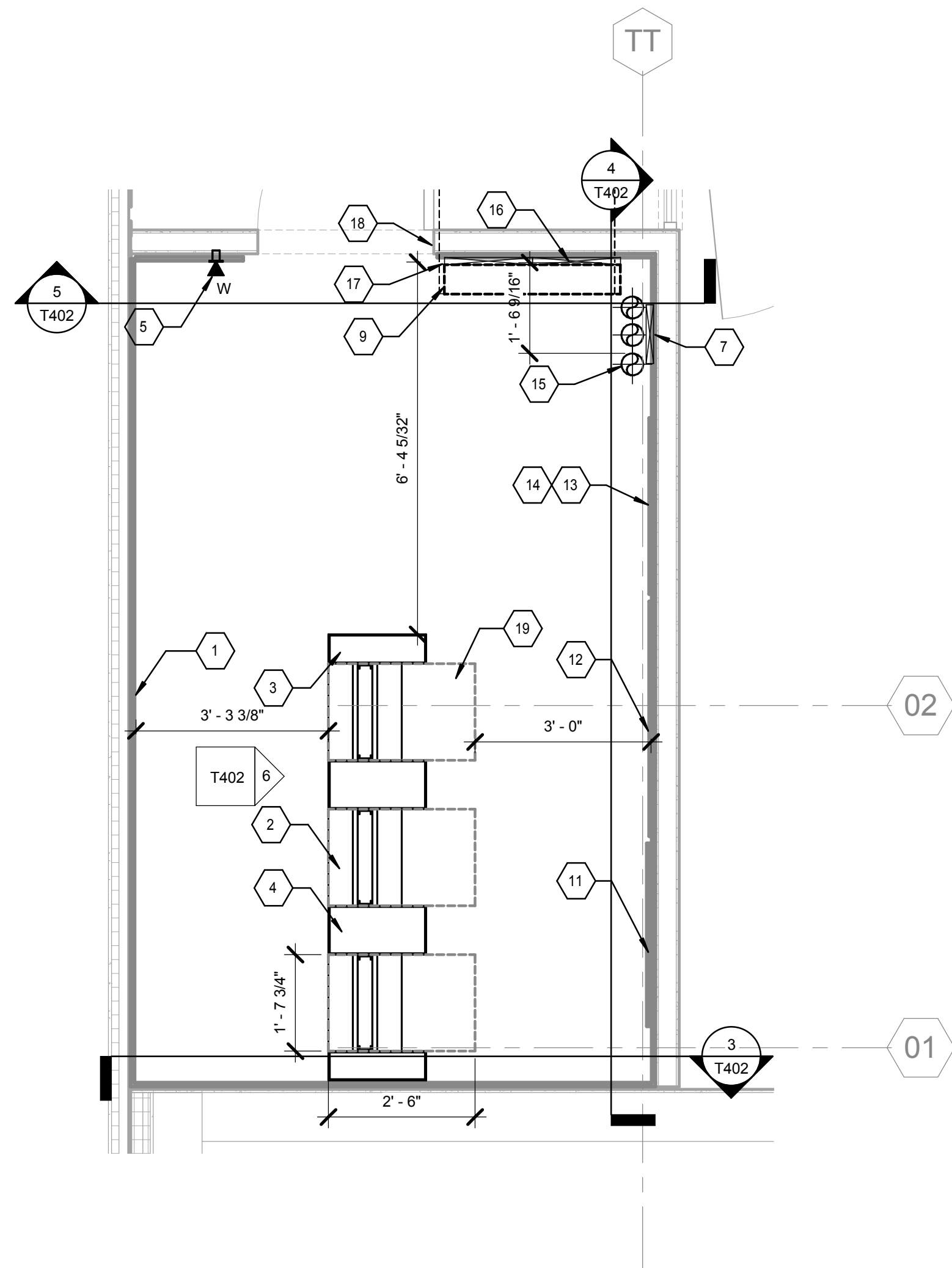
FULLY SPRINKLERED

Office of Construction and Facilities Management

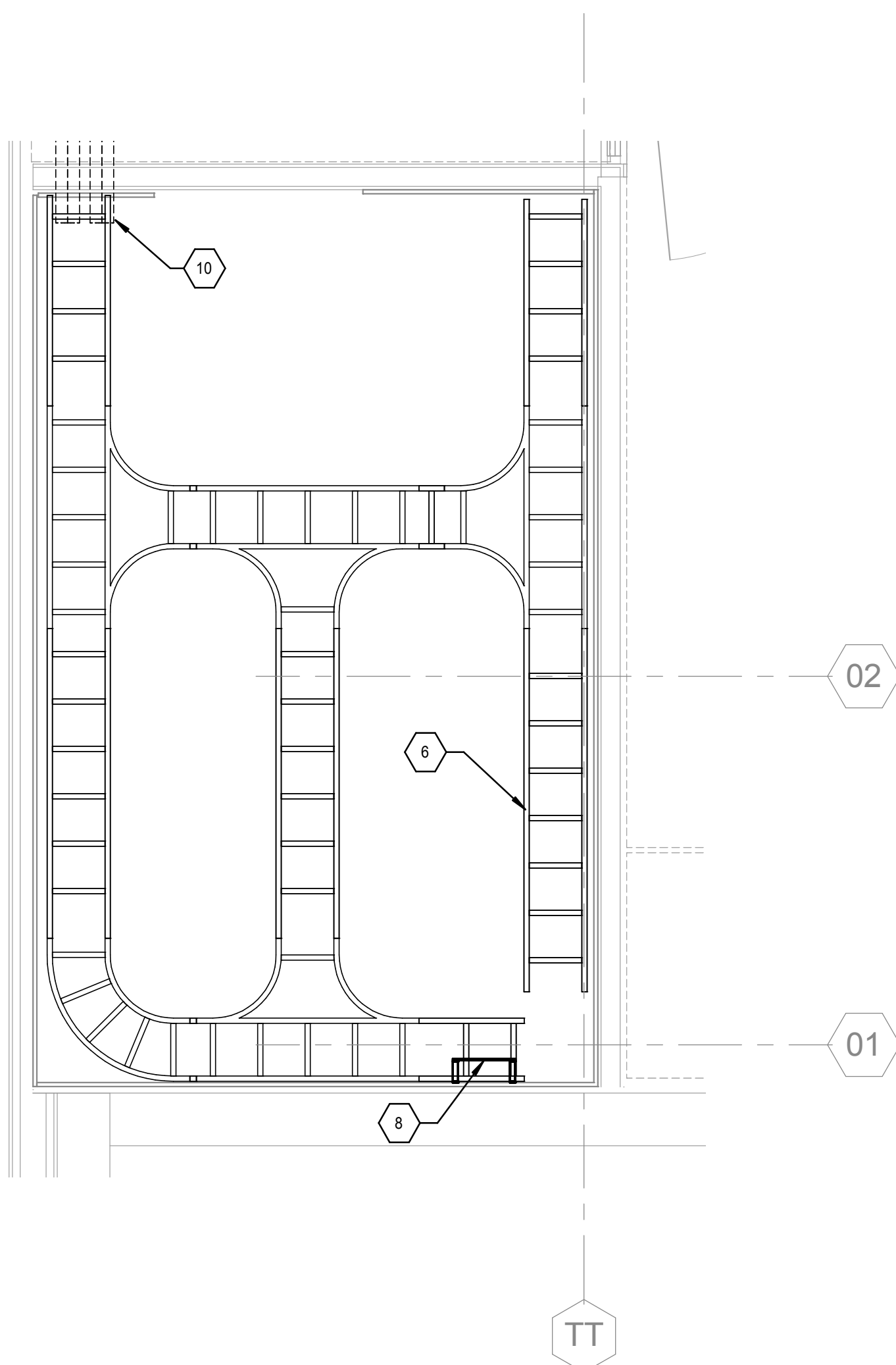
VAPAHCS
Veterans Affairs Palo Alto Health Care System

KEY NOTES:

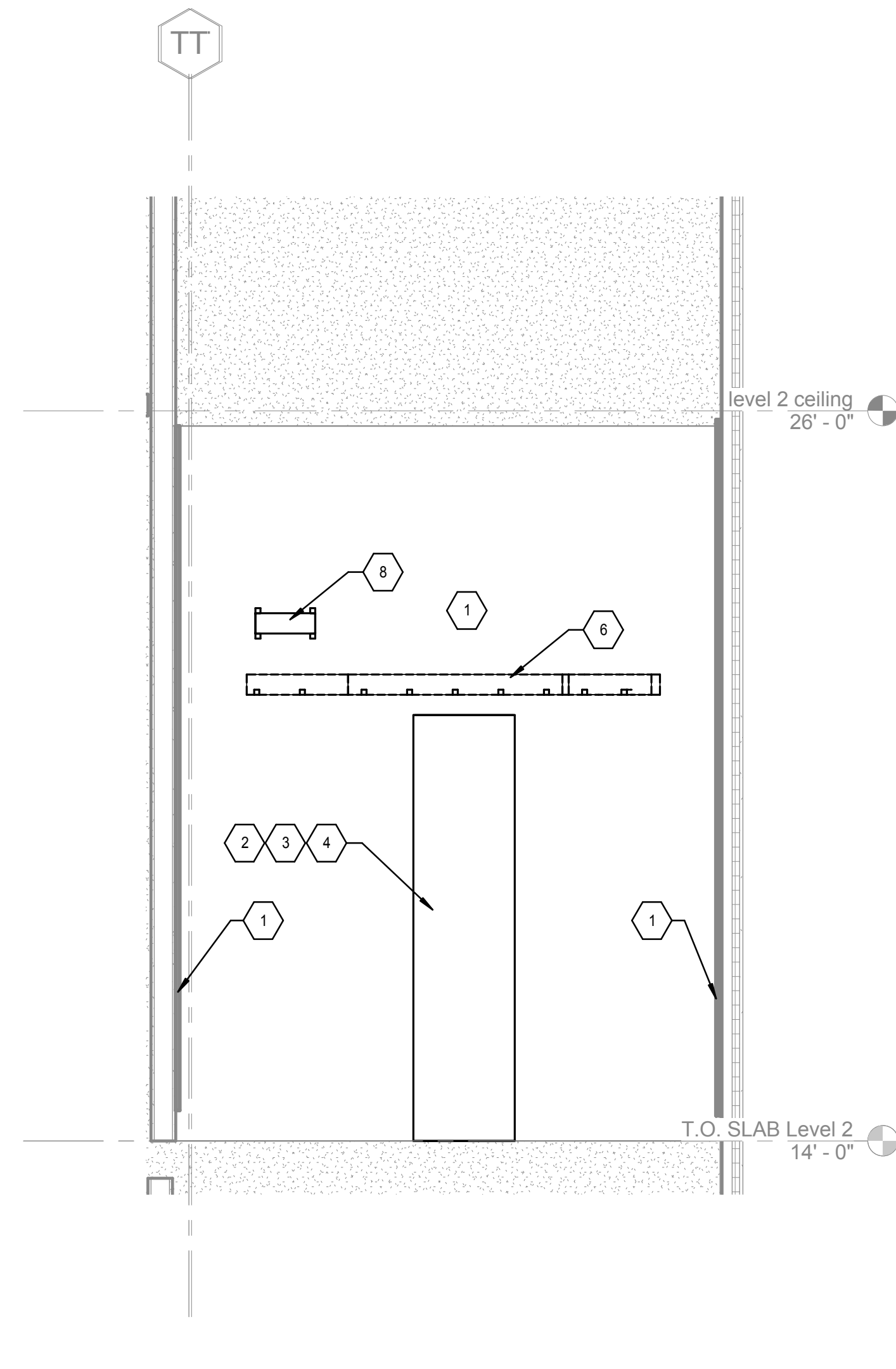
1. 8" H X 4" W X 3/4" AC RATED PLYWOOD MOUNTED 6" AFF. PAINTED WHITE WITH FIRE RETARDED PAINT. TYPICAL.
2. 7" H 19" 2-POST EQUIPMENT RACK. TYPICAL.
3. 6" WIDE VERTICAL WIRE MANAGER. TYPICAL.
4. 10" WIDE VERTICAL WIRE MANAGER. TYPICAL.
5. WALL TELEPHONE.
6. 12" WIDE LADDER RACK MOUNTED 8" AFF. TYPICAL.
7. 12" WIDE VERTICAL LADDER RACK. TYPICAL.
8. TELECOMMUNICATIONS GROUNDING BUS BAR. CONNECTION TO BUILDING GROUNDING SYSTEM BY E.C.
9. 36" L X 6" W FLOOR OPENING FOR WALKERDUCT SOLUTION. PROVIDE FIRE PROOFING AS REQUIRED TO MAINTAIN FIRE RATING.
10. (2) 4" CONDUIT TO PULLBOX IN MAIN LOBBY AREA SECOND FLOOR.
11. TELEPHONE TERMINATION WALL FIELD.
12. SECURITY PANEL.
13. CATV.
14. PAGING PANEL.
15. VOICE/DATA OUTLET.
16. (3) 4" CONDUIT STUB DOWN. PROVIDED AND INSTALLED BY E.C.
17. 18" WIDE VERTICAL LADDER RACK. TYP.
18. 36" WALKER TRENCH DUCT.
19. 30L X 19" W ACTIVE ELECTRONIC CLEARANCE.
20. 1 RU FIBER OPTIC CABLING ENCLOSURE FOR SINGLEMODE AND MULTIMODE OM4 50 MICRON.
21. 1 RU HORIZONTAL WIRE MANAGER. TYP.
22. 1 RU 48-PORT CAT 6 COPPER PATCH PANEL. TYP.
23. 2 RU HORIZONTAL WIRE MANAGER. TYP.



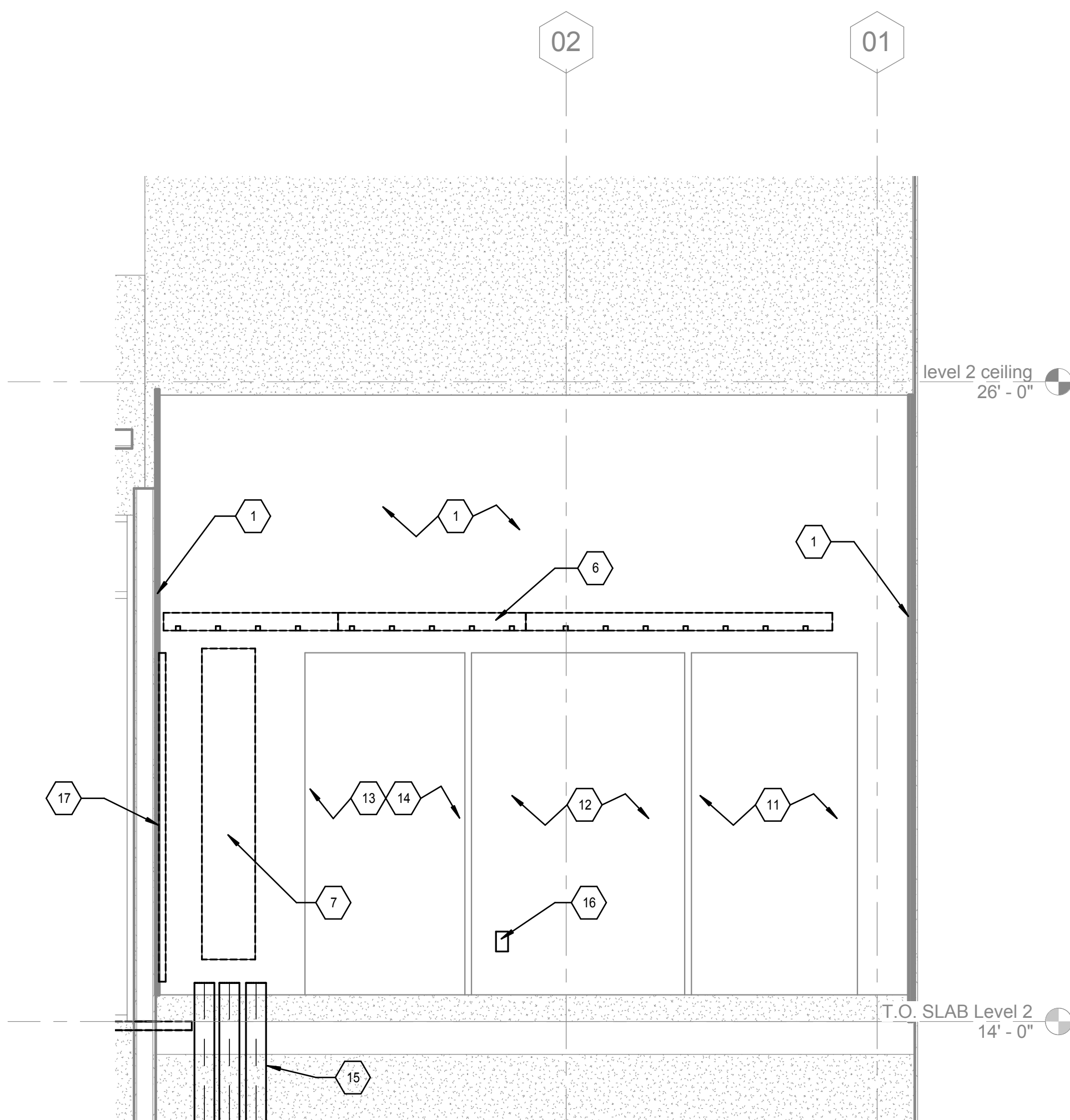
LEVEL 2 ENLARGED TELECOM ROOM - EQUIPMENT PLAN
① 1/2" = 1'-0"



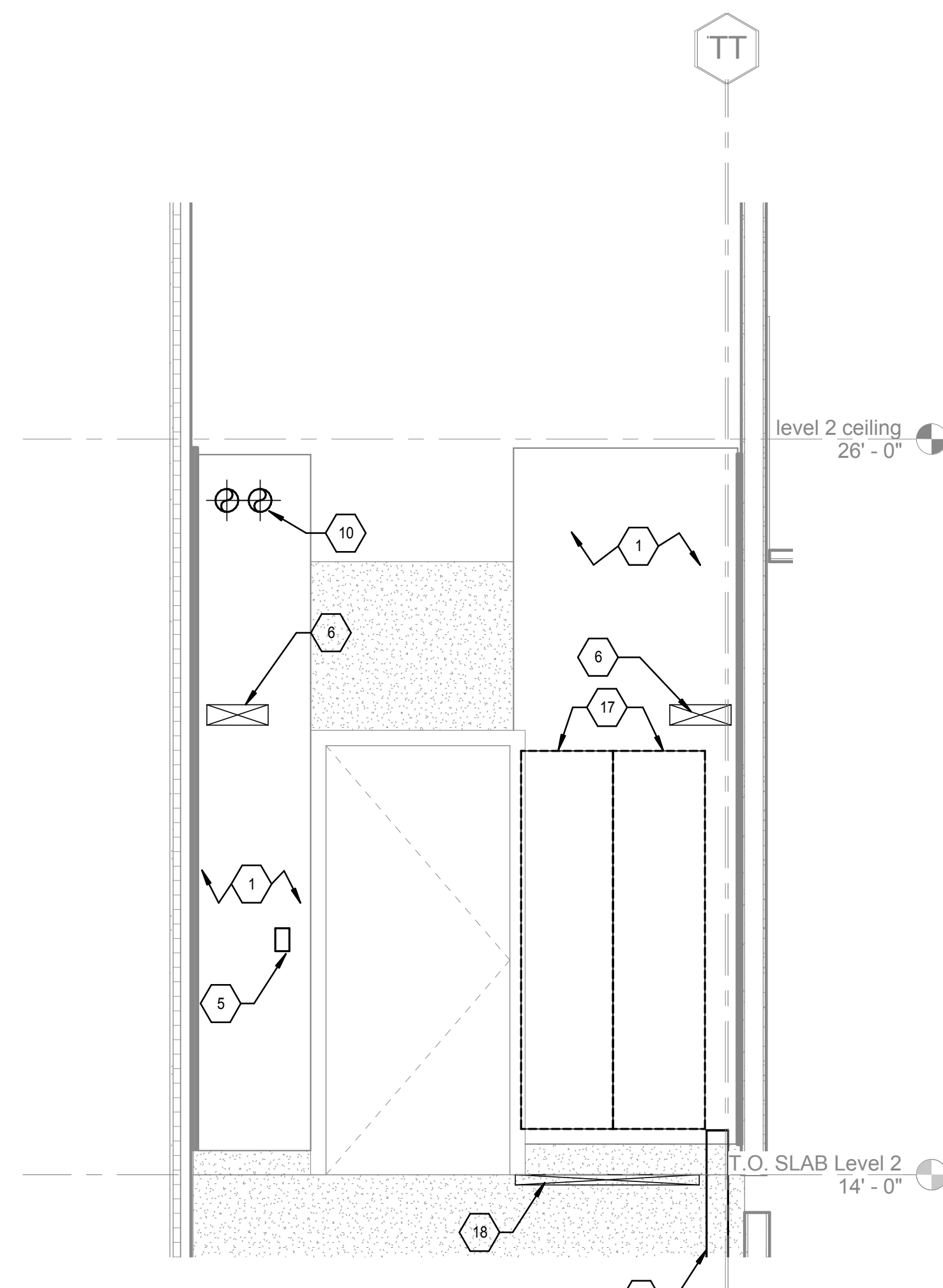
LEVEL 2 ENLARGED TELECOM ROOM - CABLE TRAY LAYOUT
② 1/2" = 1'-0"



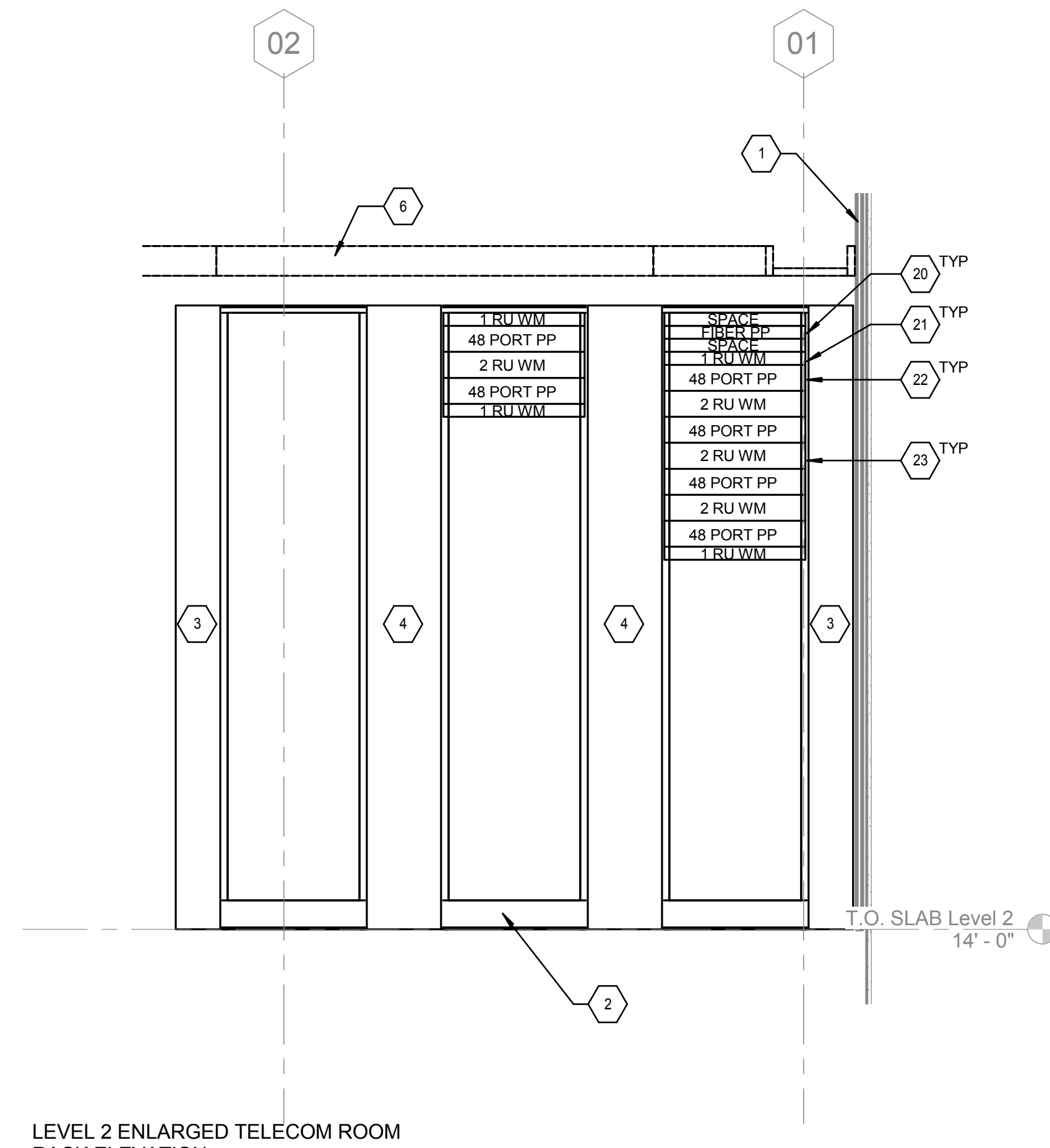
LEVEL 2 ENLARGED TELECOM ROOM - WALL ELEVATION 1
③ 1/2" = 1'-0"



LEVEL 2 ENLARGED TELECOM ROOM - WALL ELEVATION 2
④ 1/2" = 1'-0"



LEVEL 2 ENLARGED TELECOM ROOM - WALL ELEVATION 3
⑤ 1/2" = 1'-0"



LEVEL 2 ENLARGED TELECOM ROOM - RACK ELEVATION
⑥ 3/4" = 1'-0"

Revision	DATE

CONSULTANTS:

SYSKA HENNESSY GROUP
A member company of SH Group, Inc.

Syska Hennessy Group, Inc.
425 California Street
Suite 700
San Francisco, CA 94104
Tel: 415.288.9060
Fax: 415.835.0385
www.syska.com

Stamp and Signature:

ARCHITECT/ENGINEERS:

KPA ENGINEERS ARCHITECTS
ONE KAISER PLAZA SUITE 445
OAKLAND CALIFORNIA 94612
TEL 510.271.6701 FAX 510.271.6707
© THE KPA GROUP 2014
KPA Project No. 563.00

Drawing Title:
TELECOMMUNICATIONS ENLARGED TELECOM ROOM 201 PLAN

Approved: Project Director
VAPAHCS PLANNING AND ENGINEERING

Project Title:
ESTABLISH SUNNYVALE R AND D CAMPUS

Location:
1080 INNOVATION WAY, SUNNYVALE, CA 94085

Date:
11/25/2014

Check:
HC

Drawn:
PMG

Project Number:
640-397

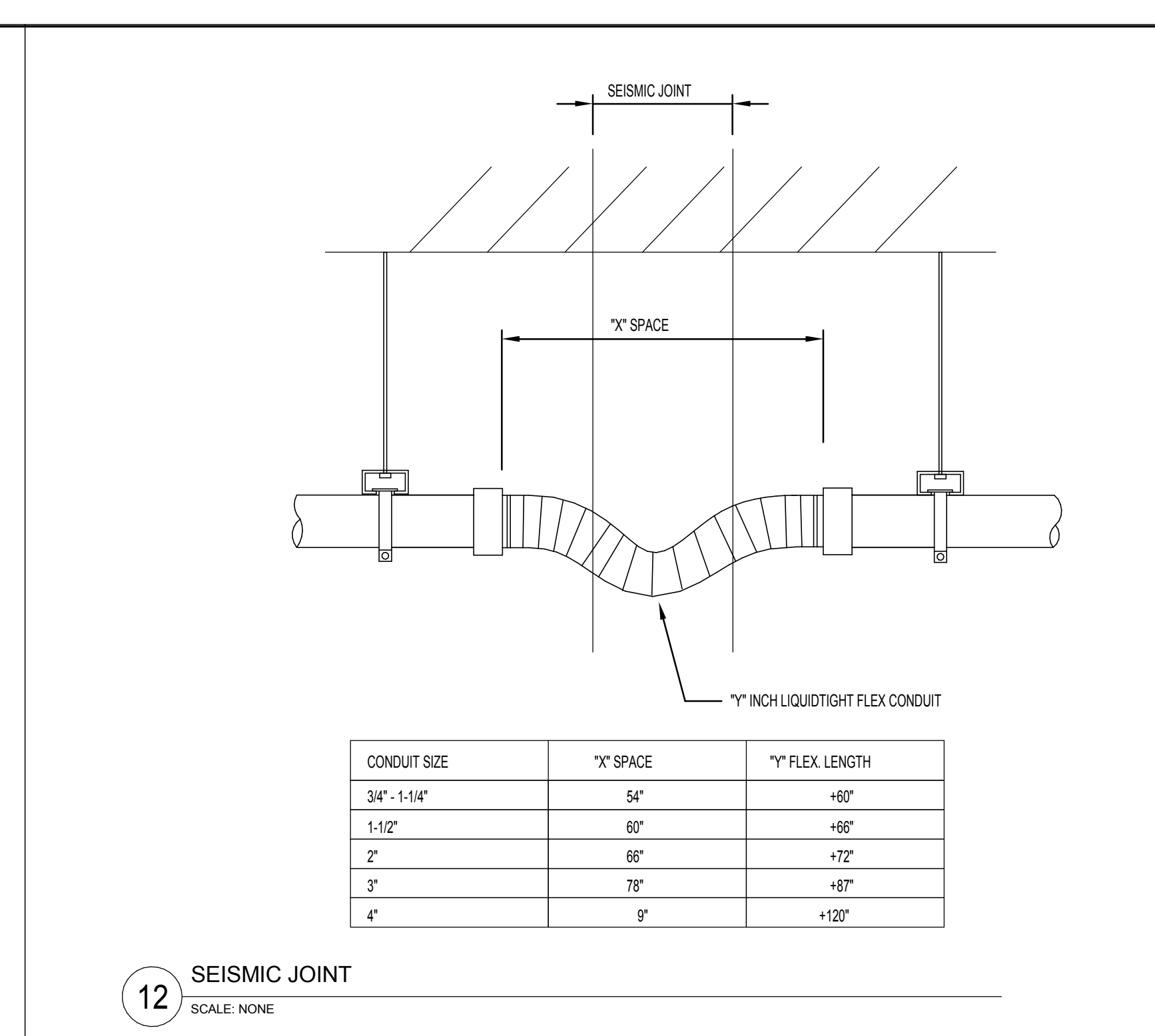
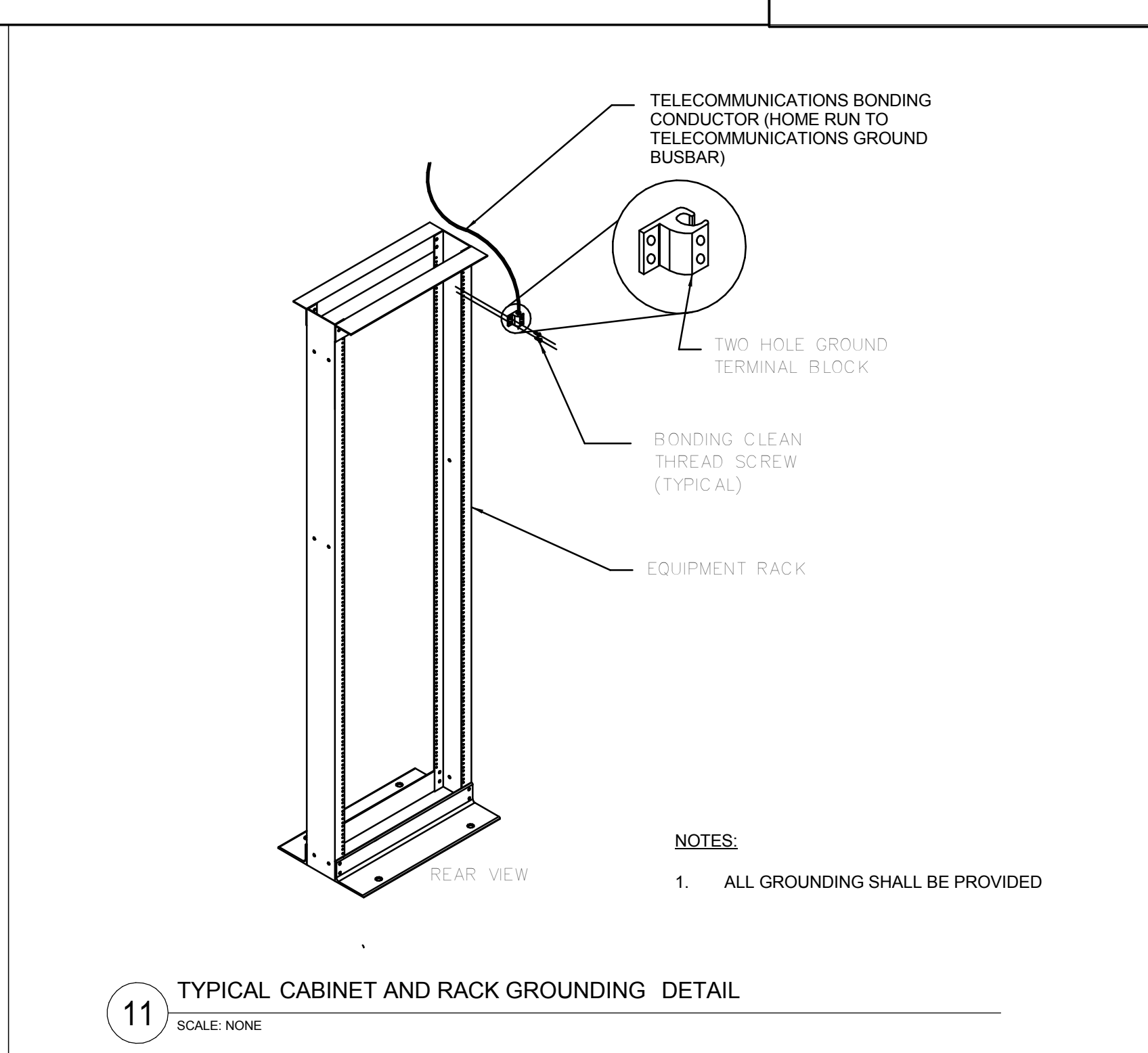
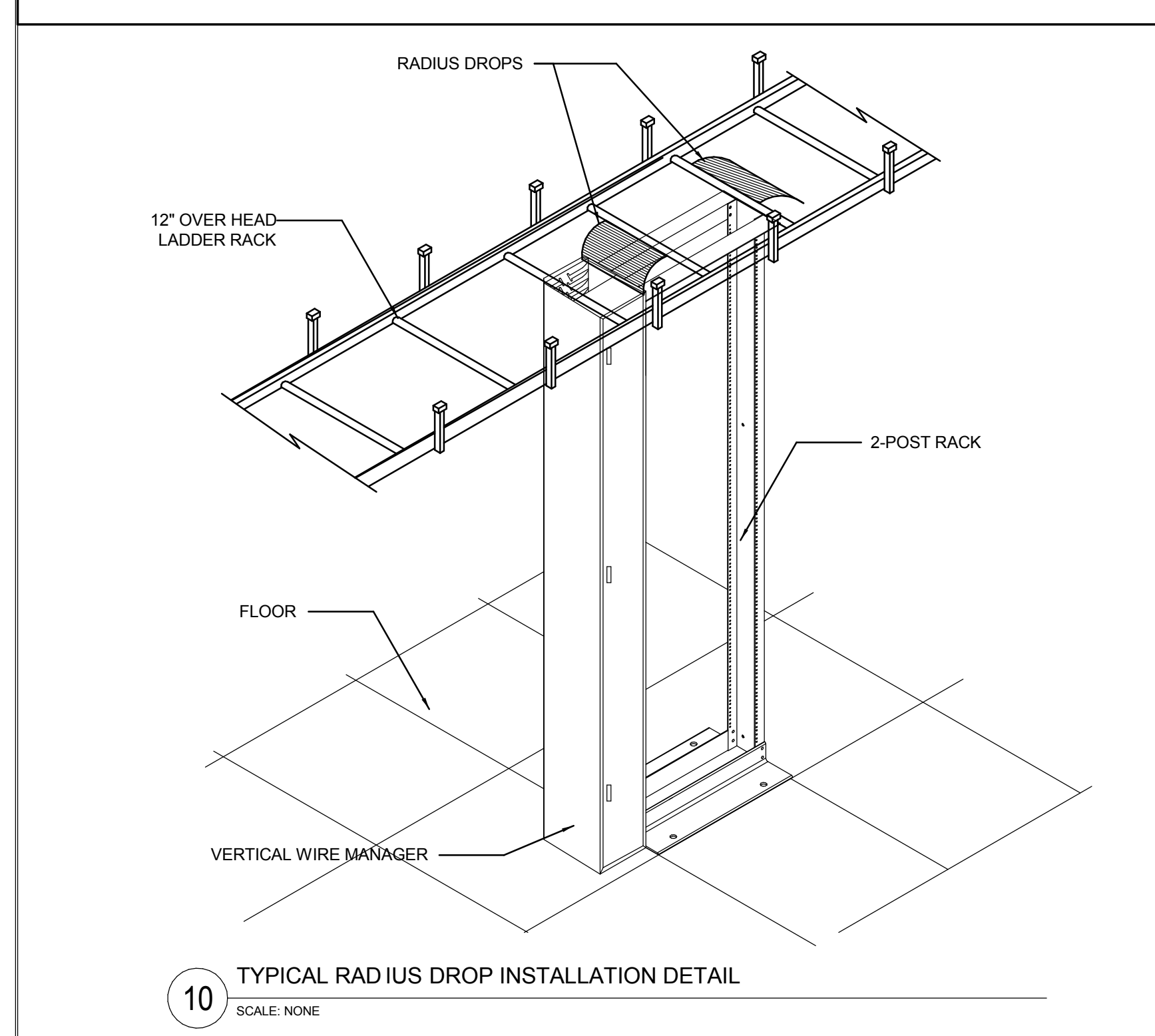
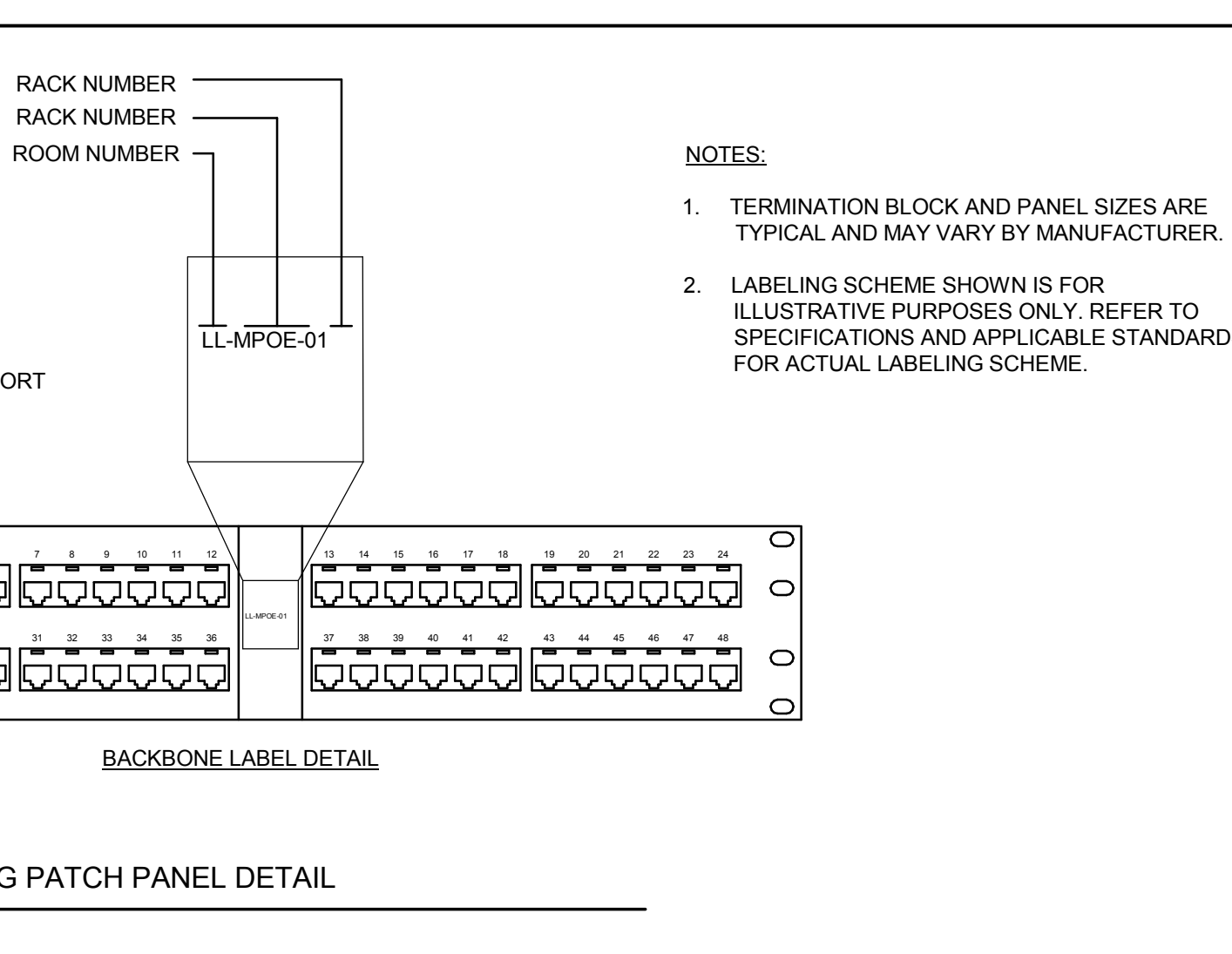
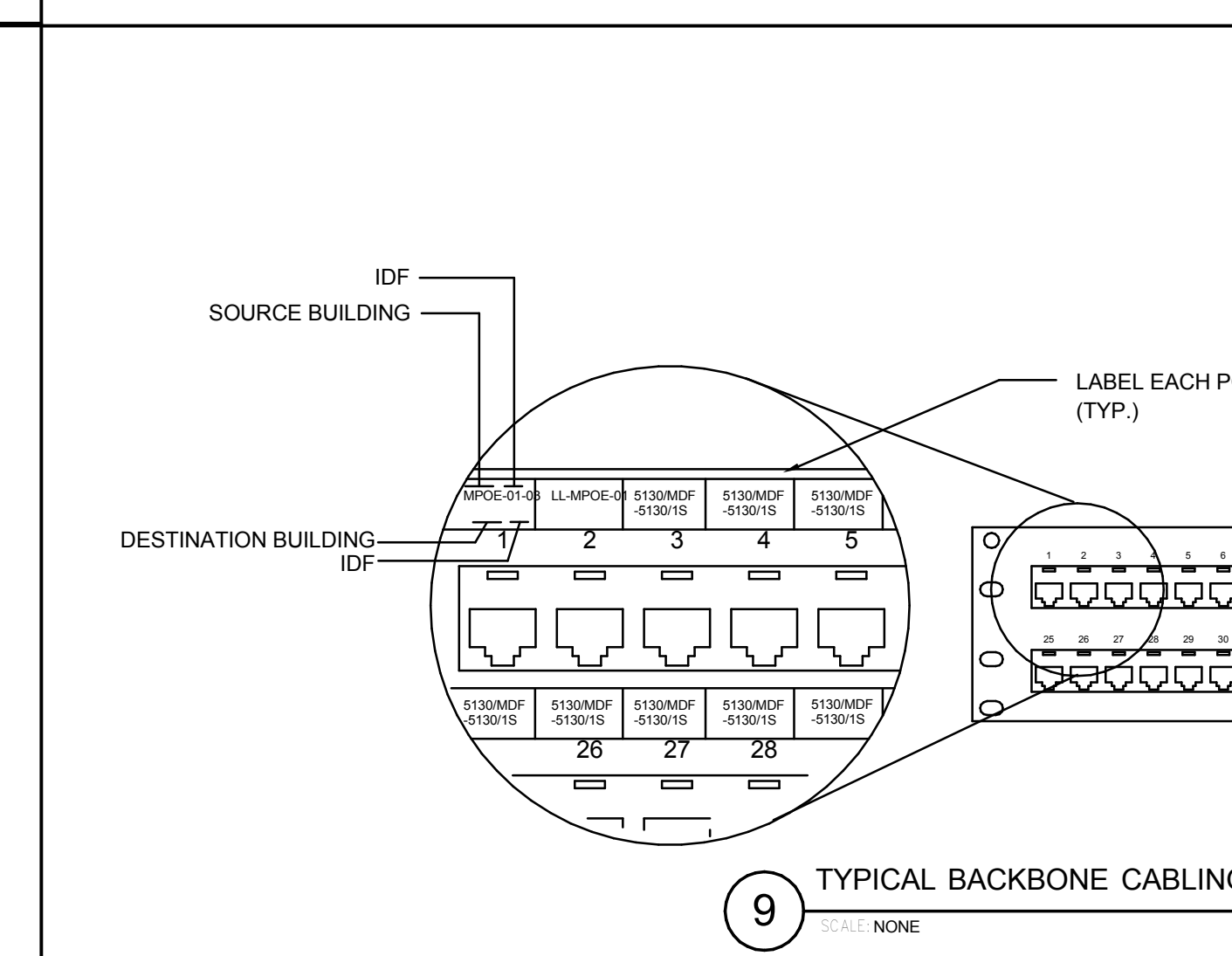
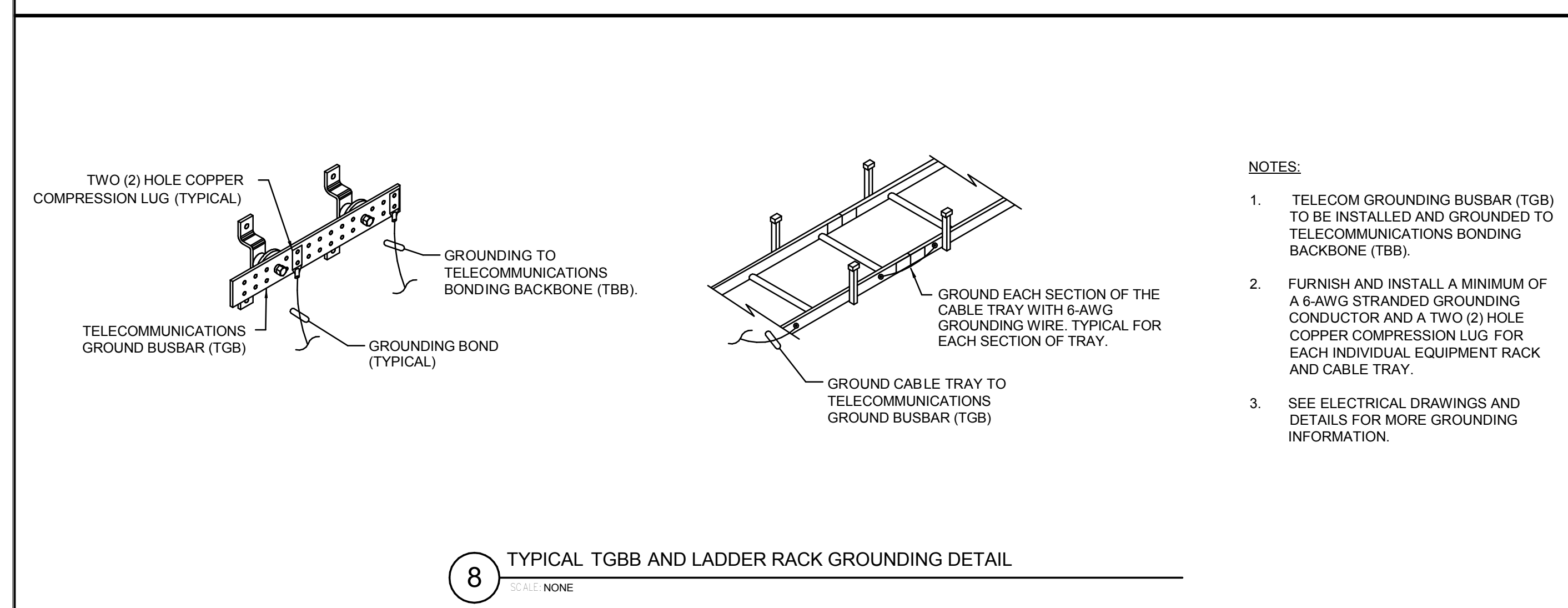
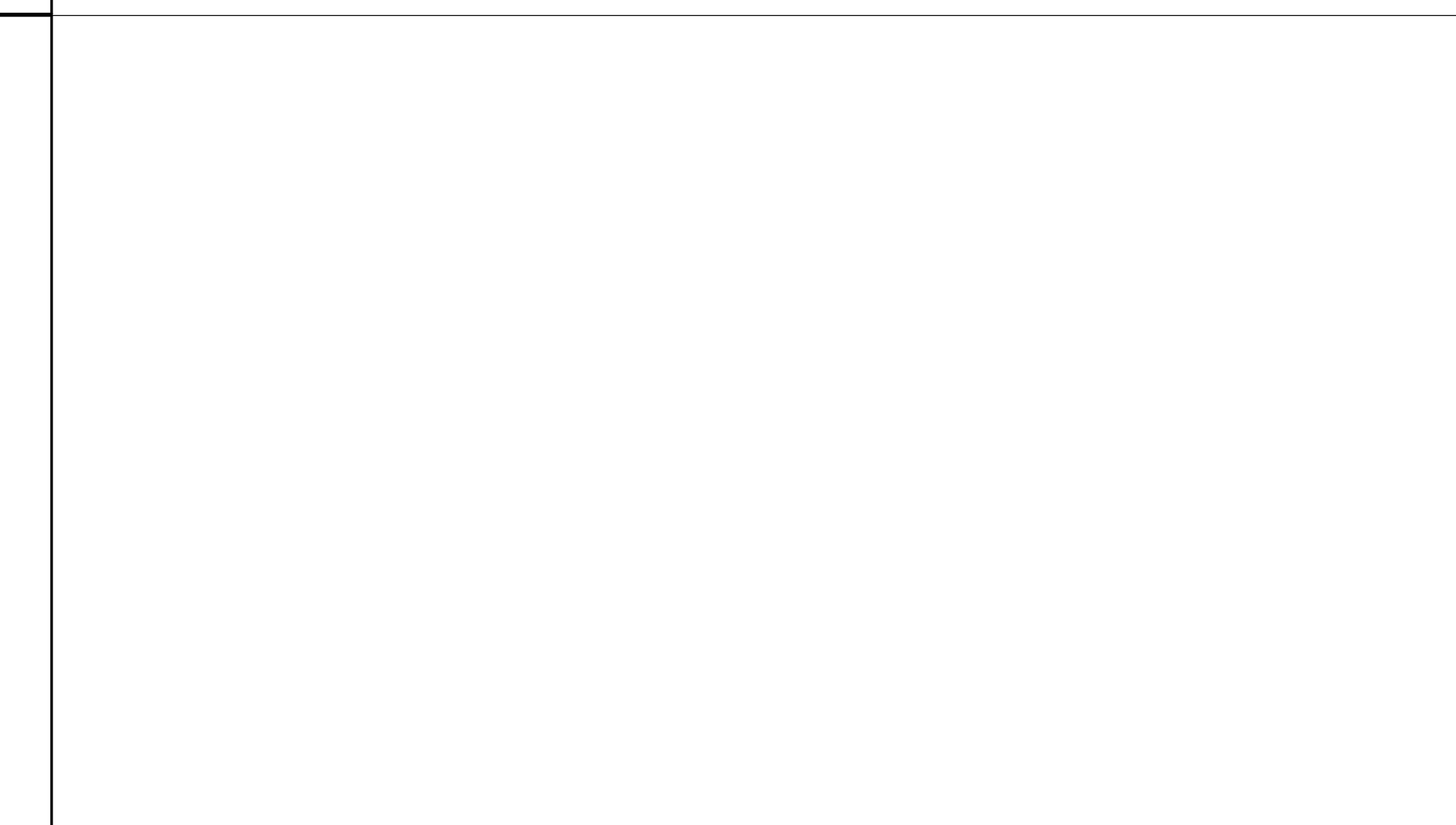
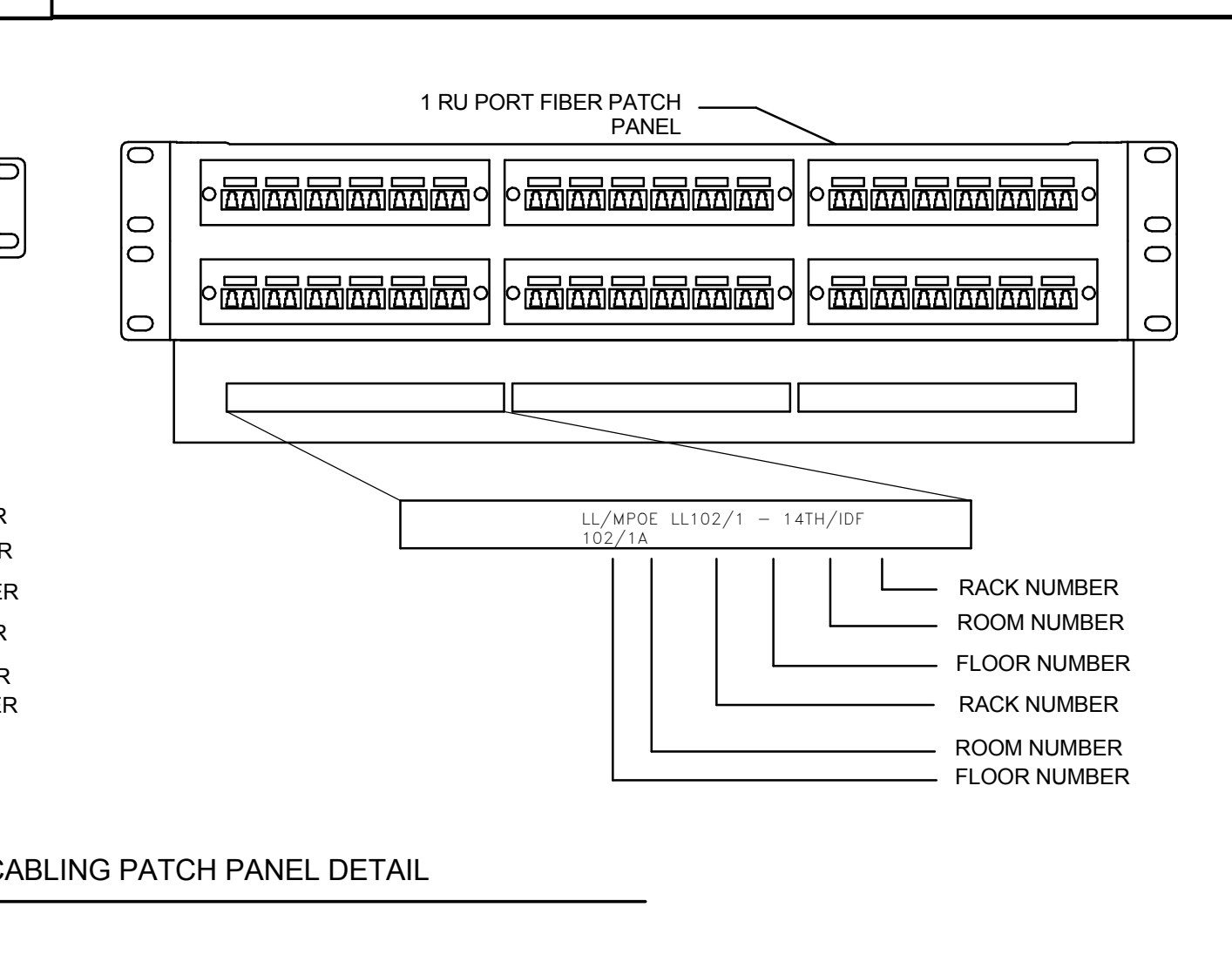
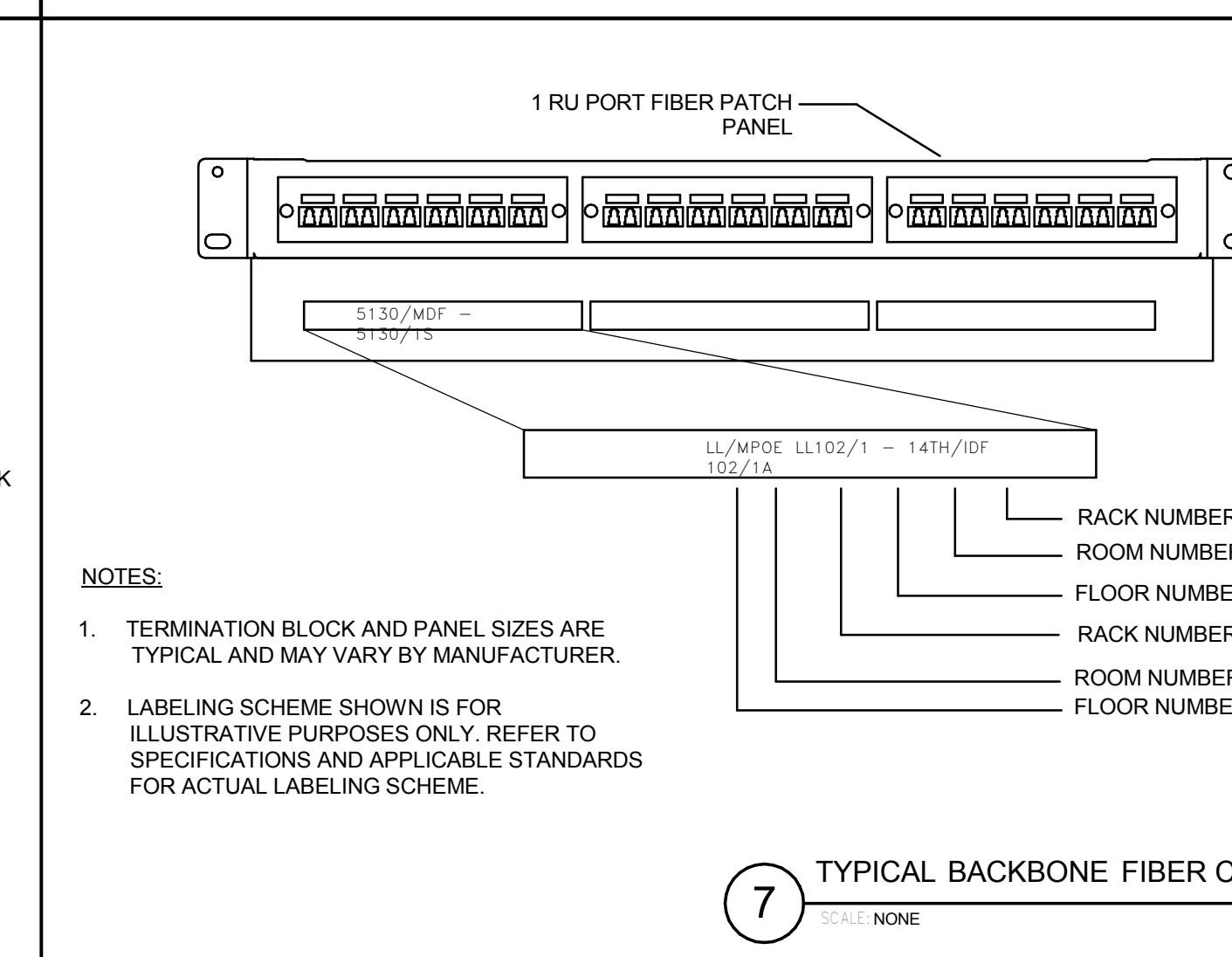
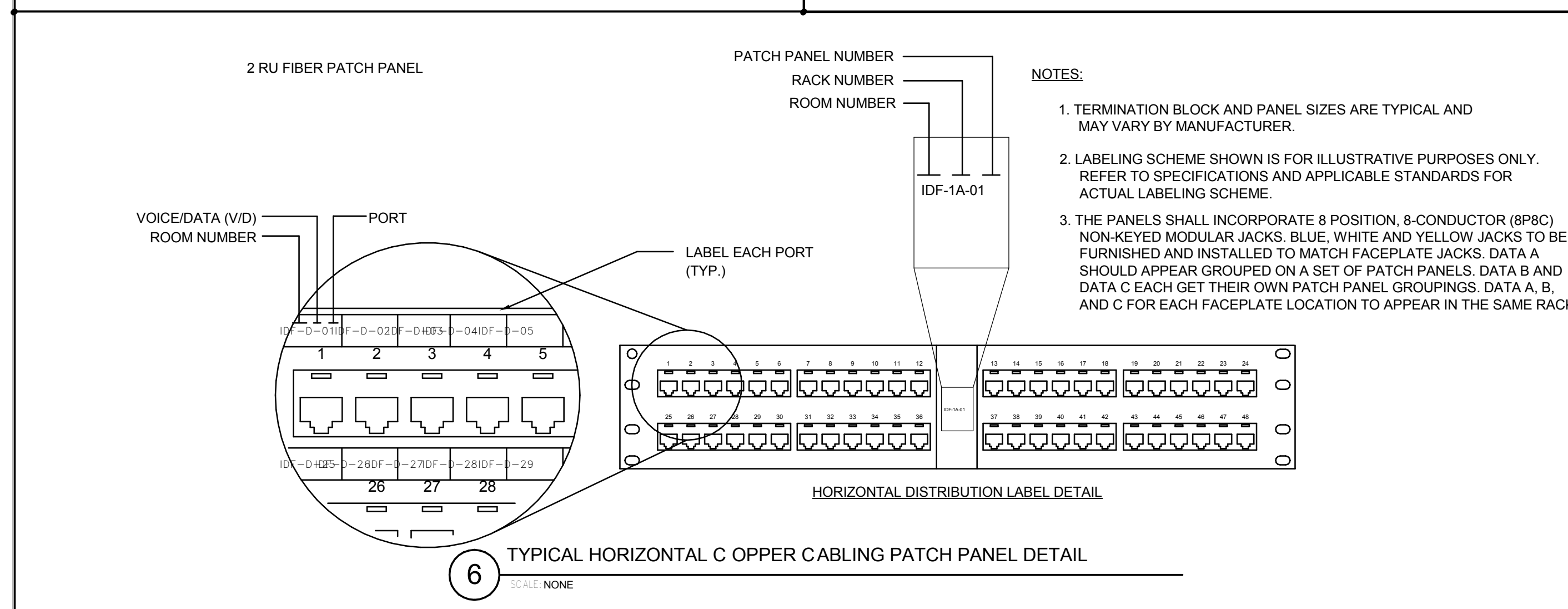
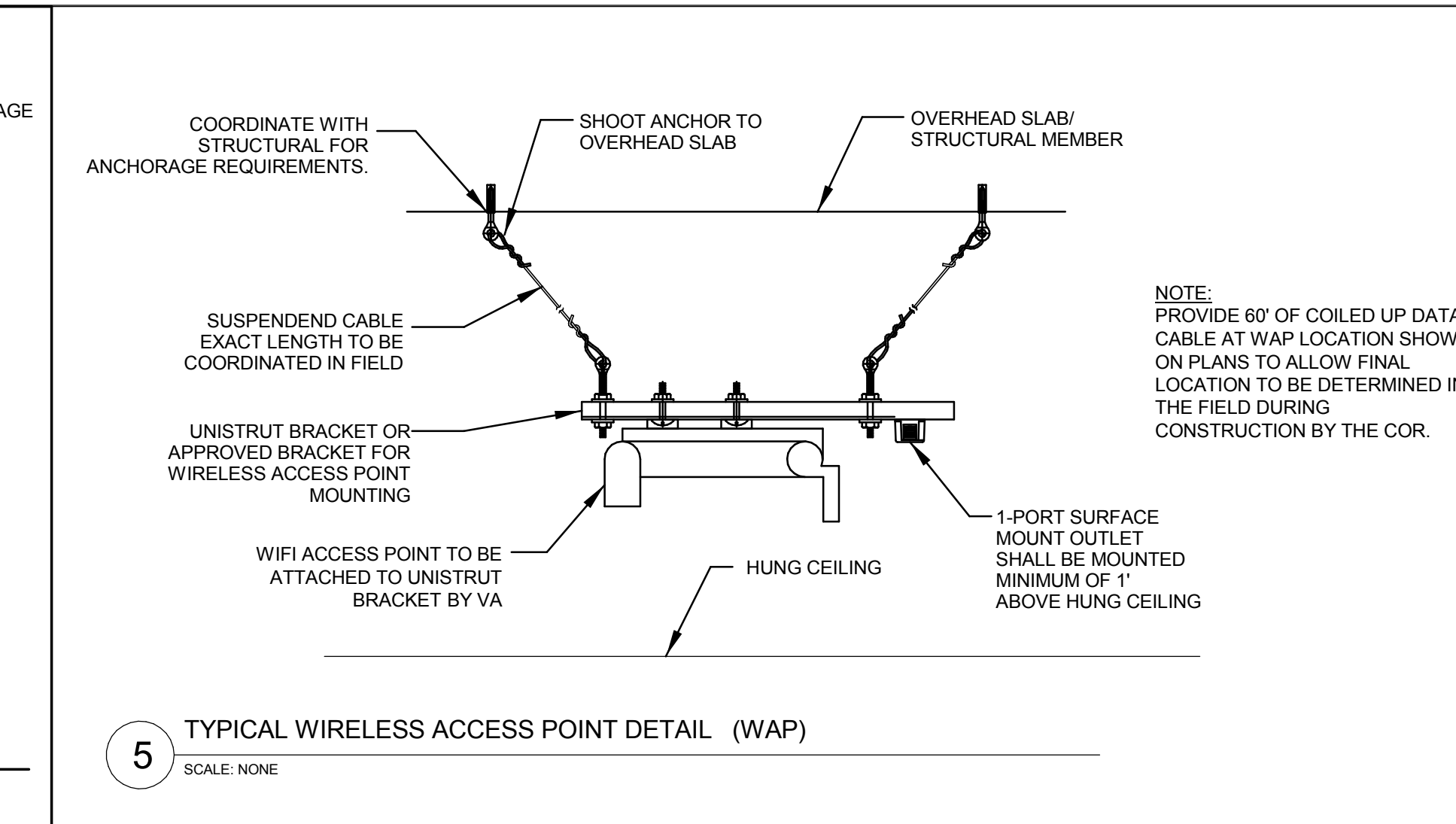
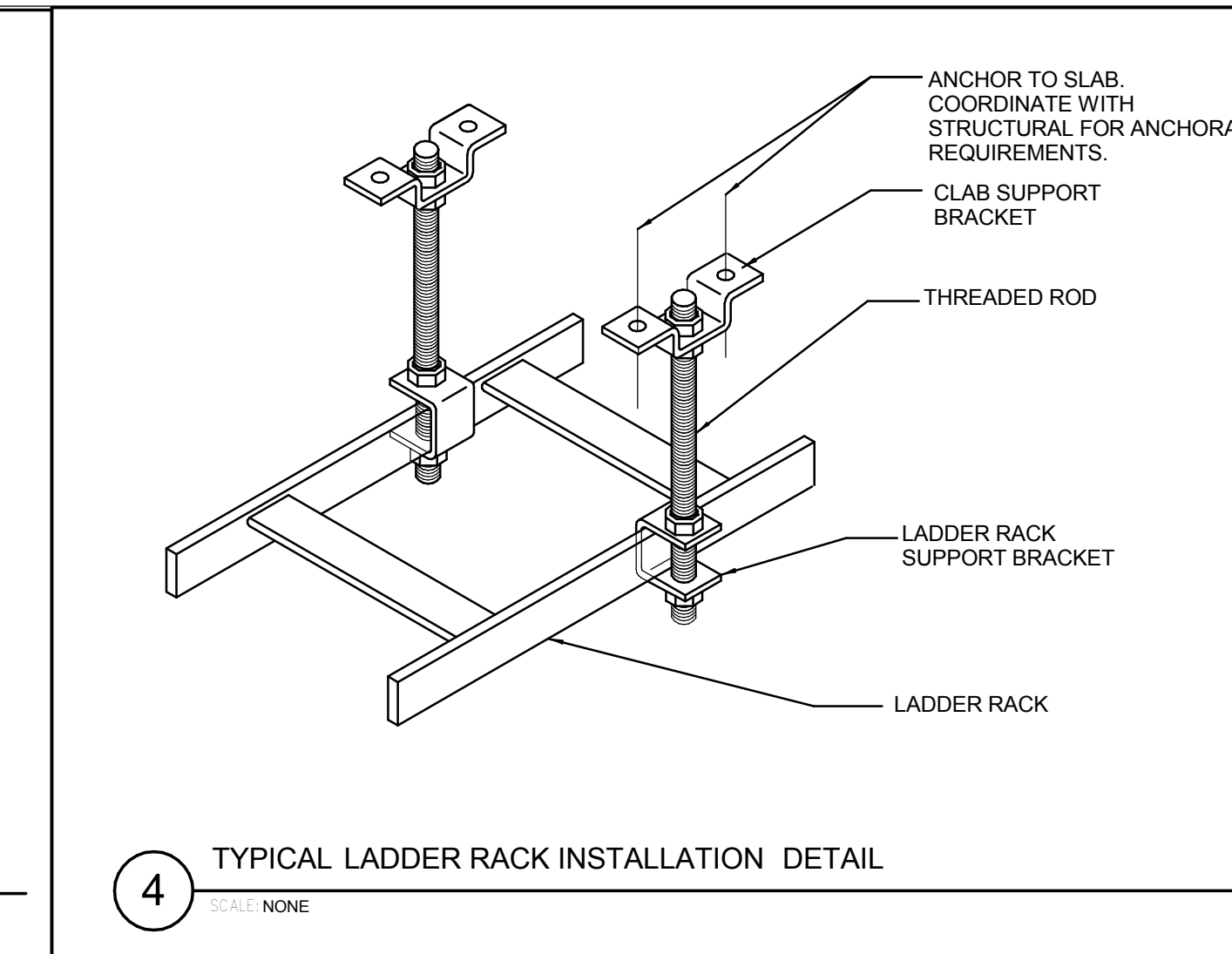
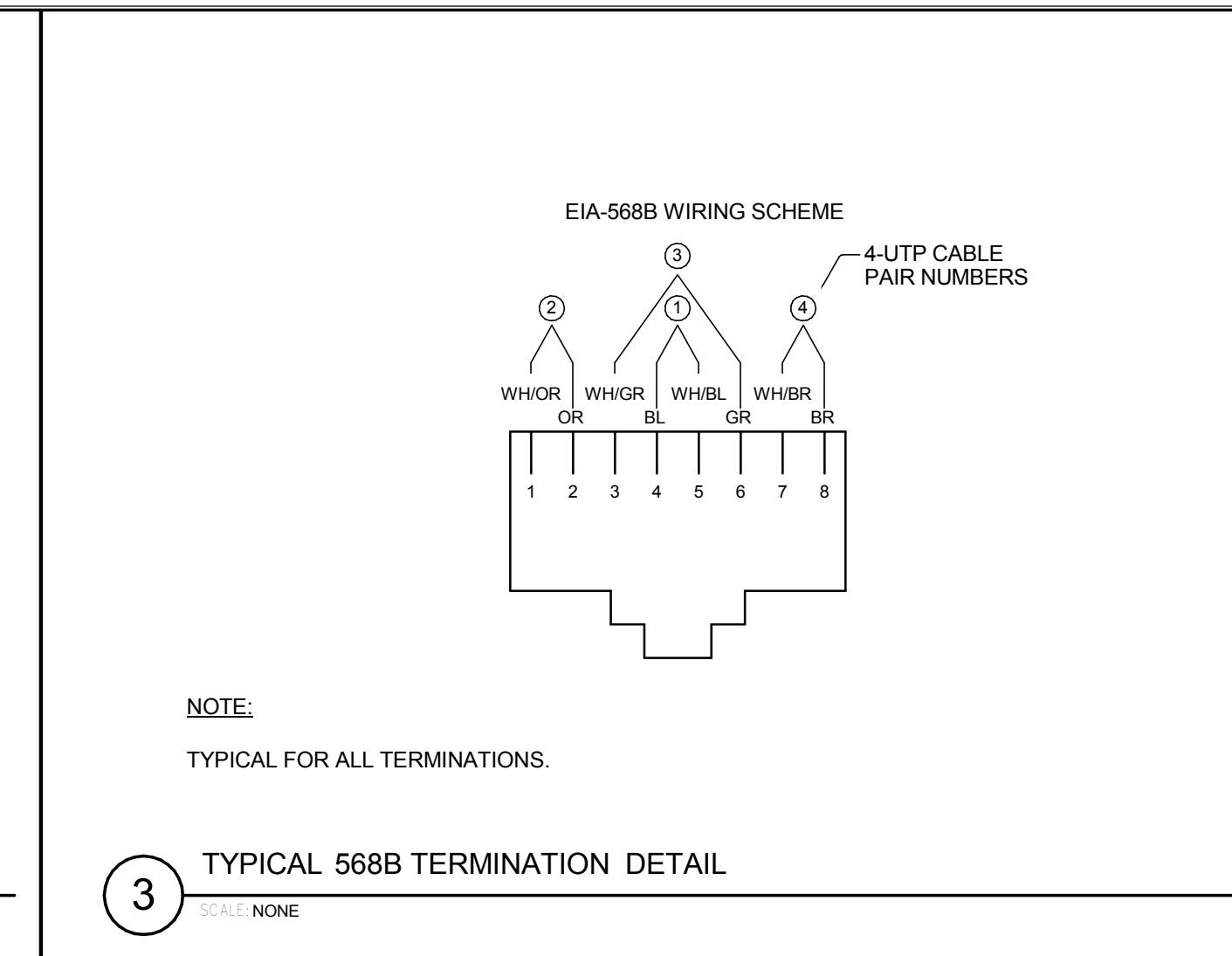
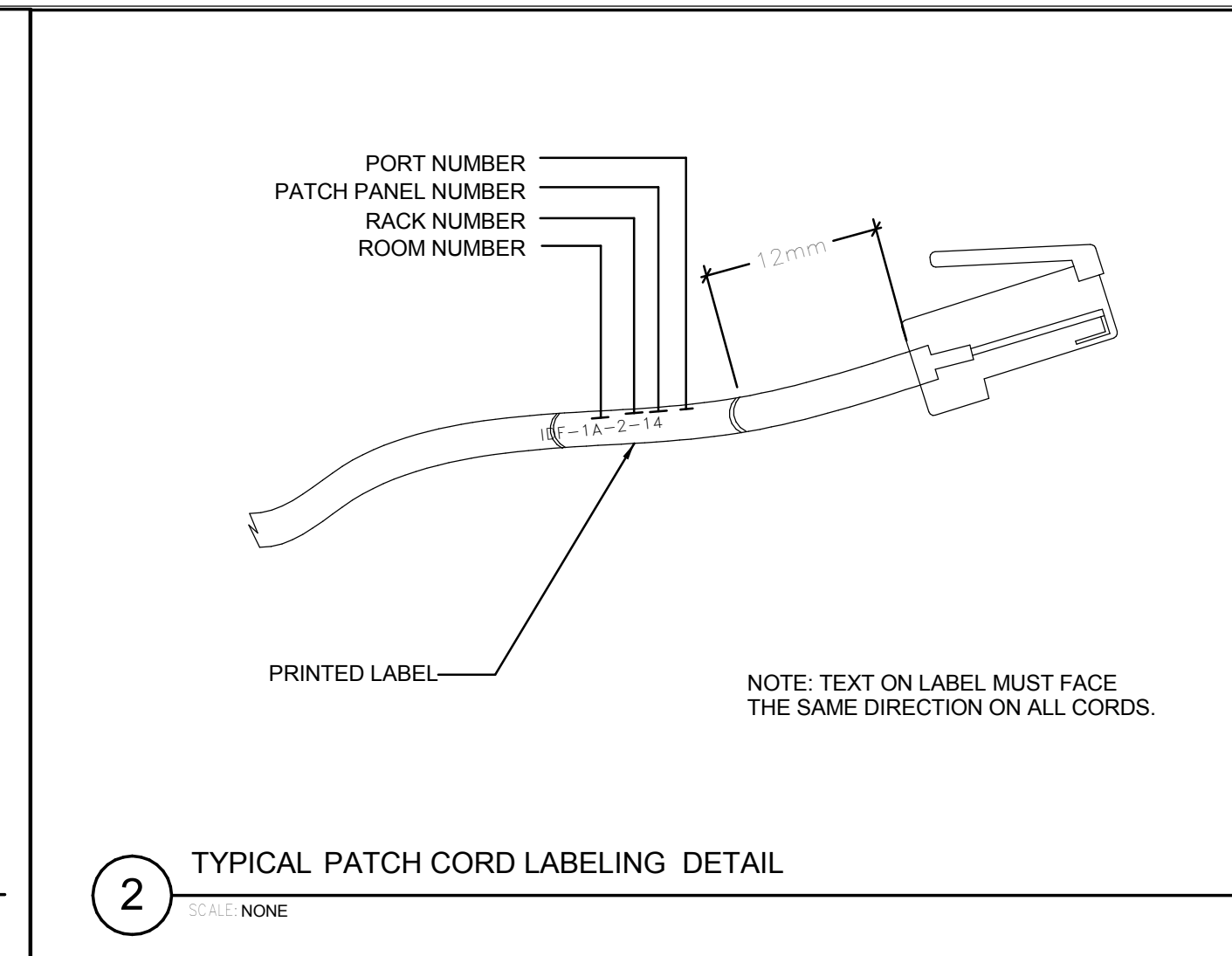
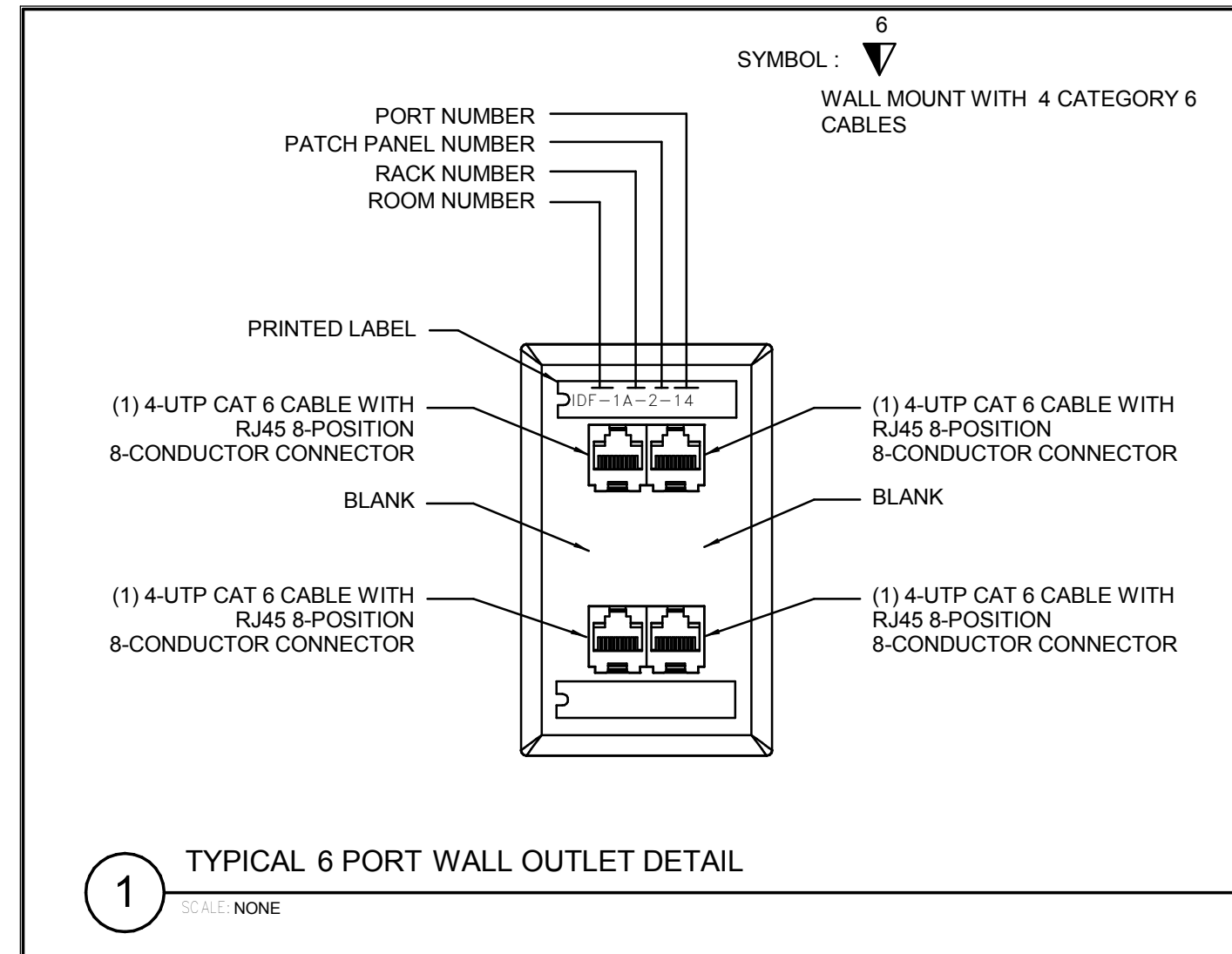
Building Number:
1002

Drawing Number:
T402

Dwg. of

Office of Construction and Facilities Management

VAPAHCS
VAPAHCS Planning and Engineering



Revision	DATE

CONSULTANTS:

SYSKA HENNESSY GROUP
A member company of SH Group, Inc.

Syska Hennessy Group, Inc.
425 California Street
Suite 700
San Francisco, CA 94104
Tel: 415.288.9060
Fax: 415.835.0385
www.syska.com

Stamp and Signature:

ARCHITECT/ENGINEERS:

KPA ENGINEERS ARCHITECTS
ONE KAISER PLAZA SUITE 445
OAKLAND CALIFORNIA 94612
TEL 510.271.6701 FAX 510.271.6707
THE KPA GROUP (C) THE KPA GROUP 2014
KPA Project No. 563.00

Drawing Title:
TELECOMMUNICATIONS DETAILS

Approved: Project Director
VAPAHCS PLANNING AND ENGINEERING

Project Title:
ESTABLISH SUNNYVALE R AND D CAMPUS

Location:
1080 INNOVATION WAY, SUNNYVALE, CA 94085

Date: 11/25/2014
Check: HC
Drawn: PMG

Project Number:
640-397
Building Number:
1002
Drawing Number:
T501
Dwg. of

FULLY SPRINKLERED

Office of Construction and Facilities Management

VAPAHCS
VAPAHCS
VAPAHCS

