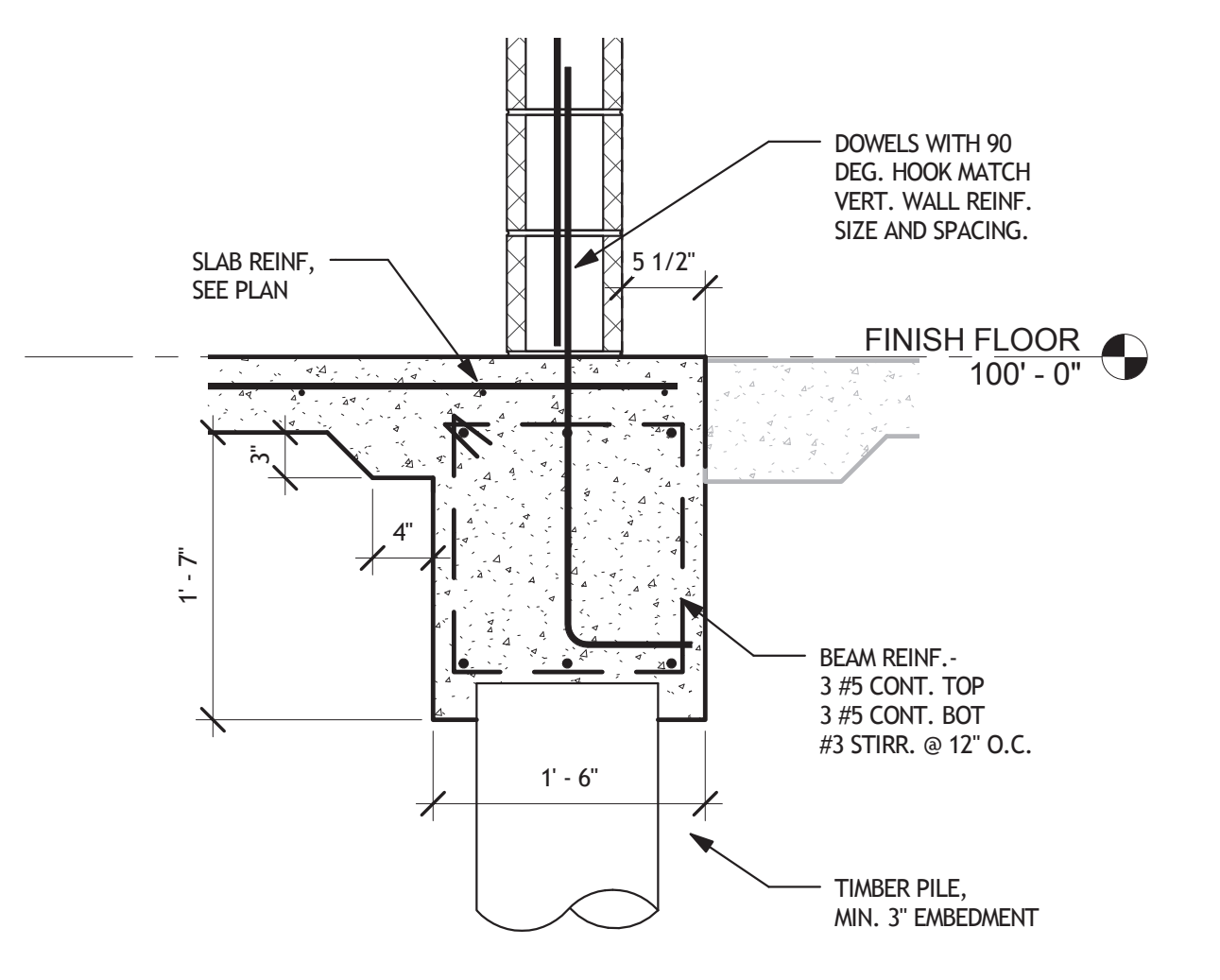
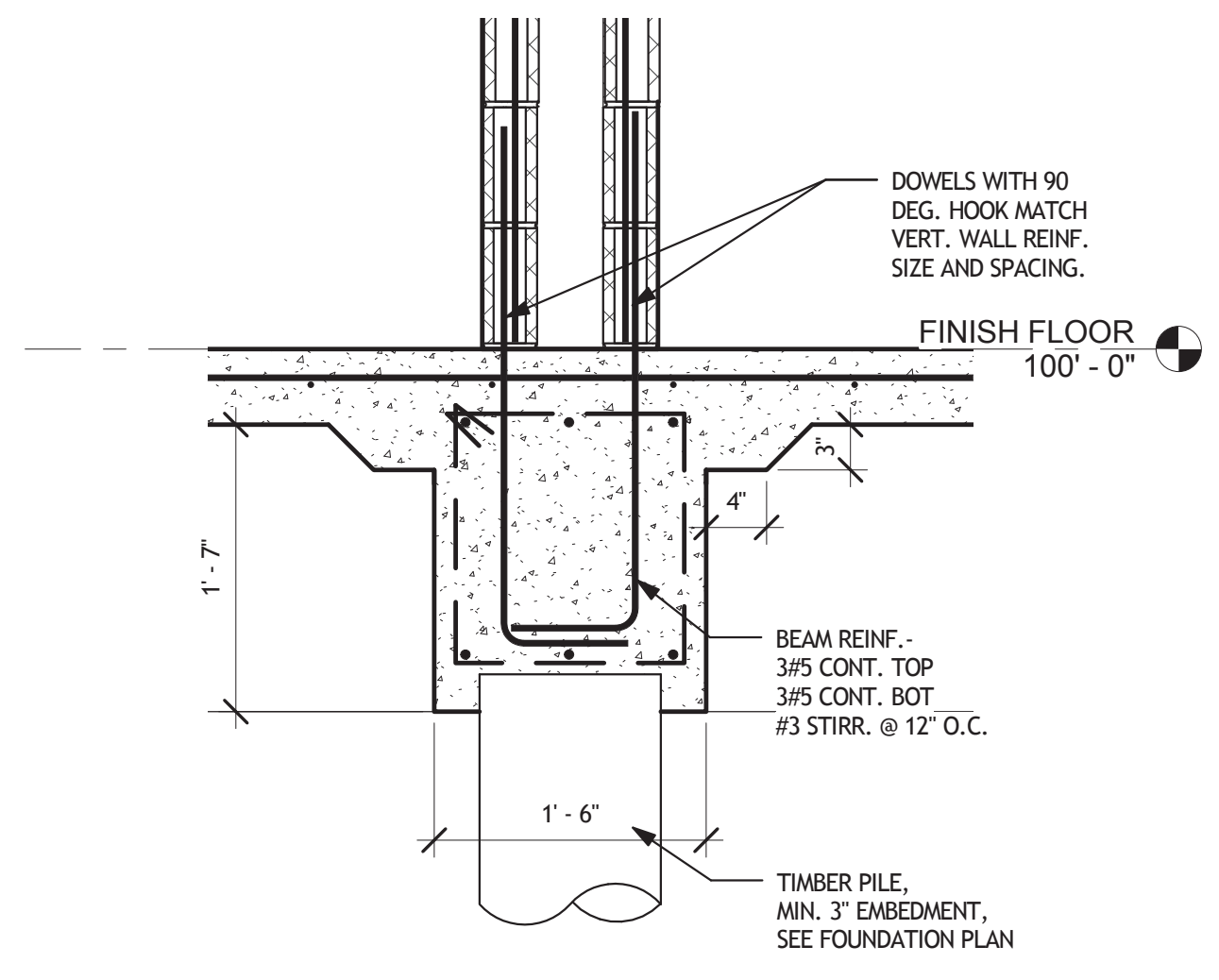


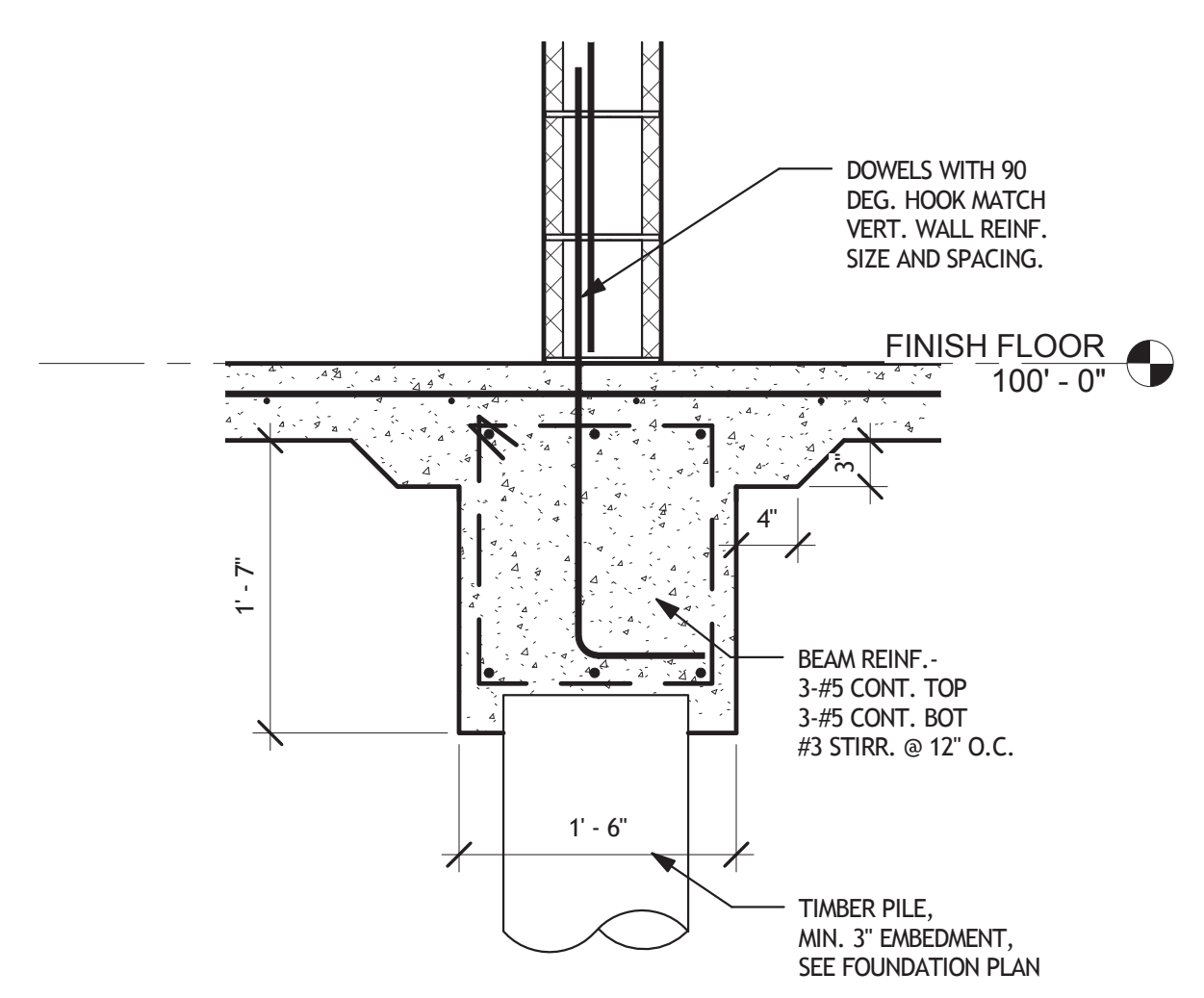
**1 FOUNDATION PLAN**  
S101 SCALE: 1/4" = 1'-0"



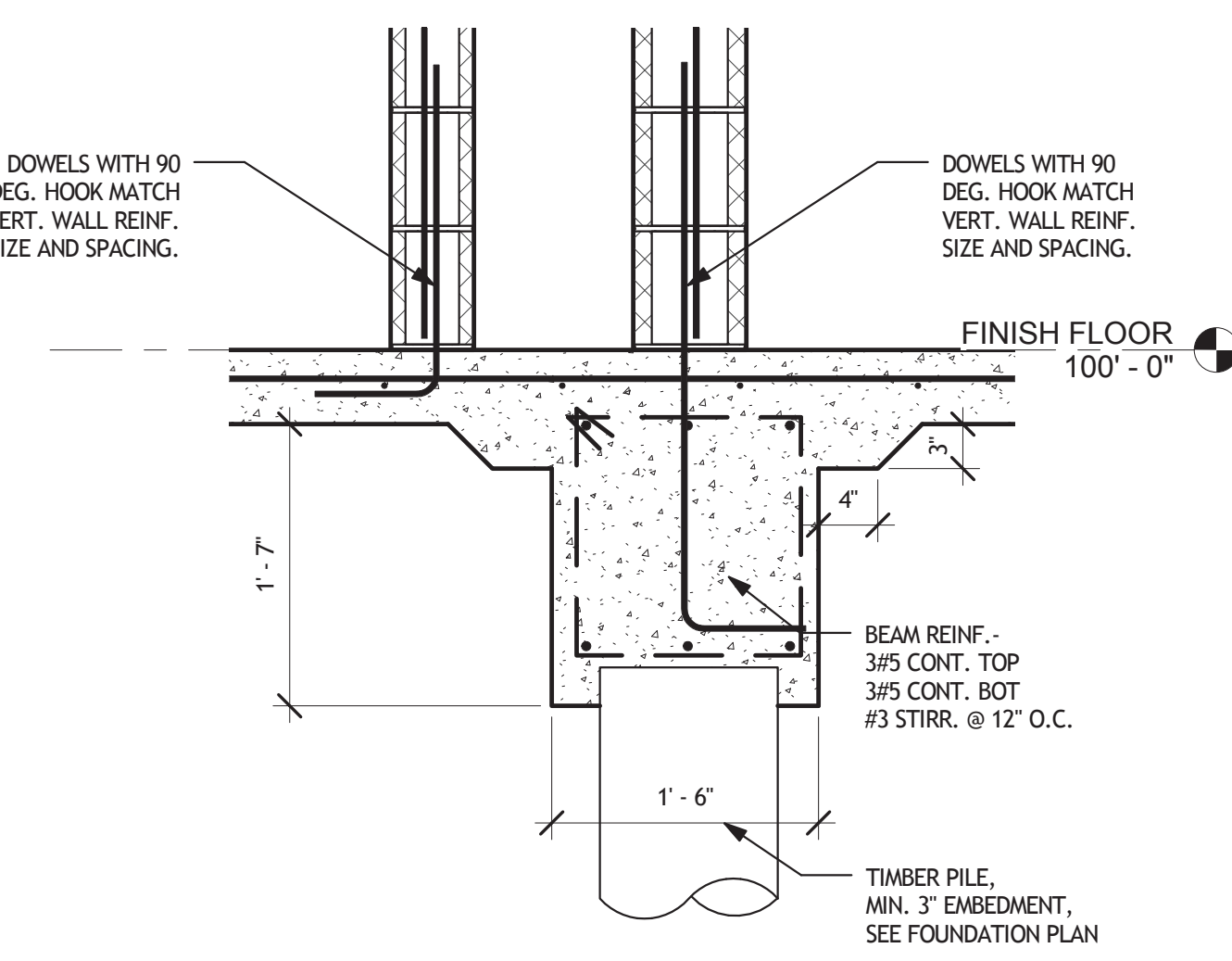
**2 FOUNDATION DETAIL 1**  
S101 SCALE: 1" = 1'-0"



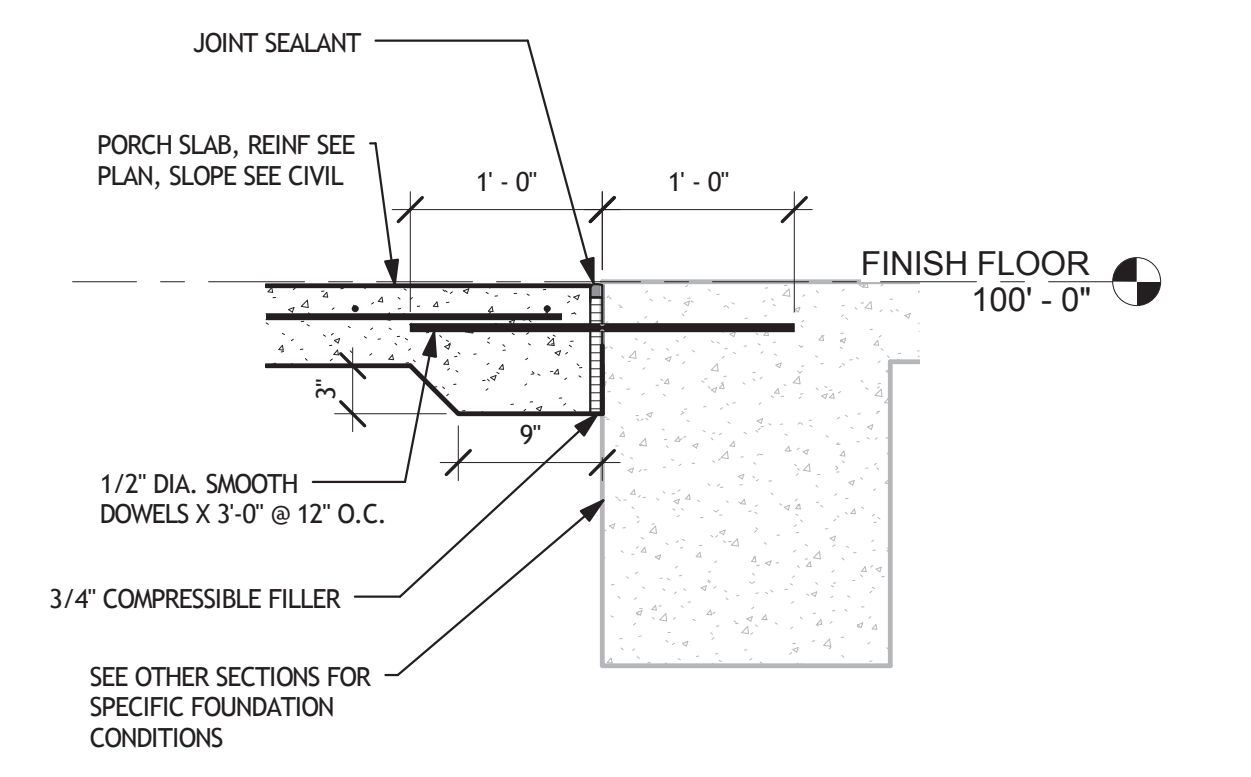
**5 FOUNDATION DETAIL 7**  
S101 SCALE: 1" = 1'-0"



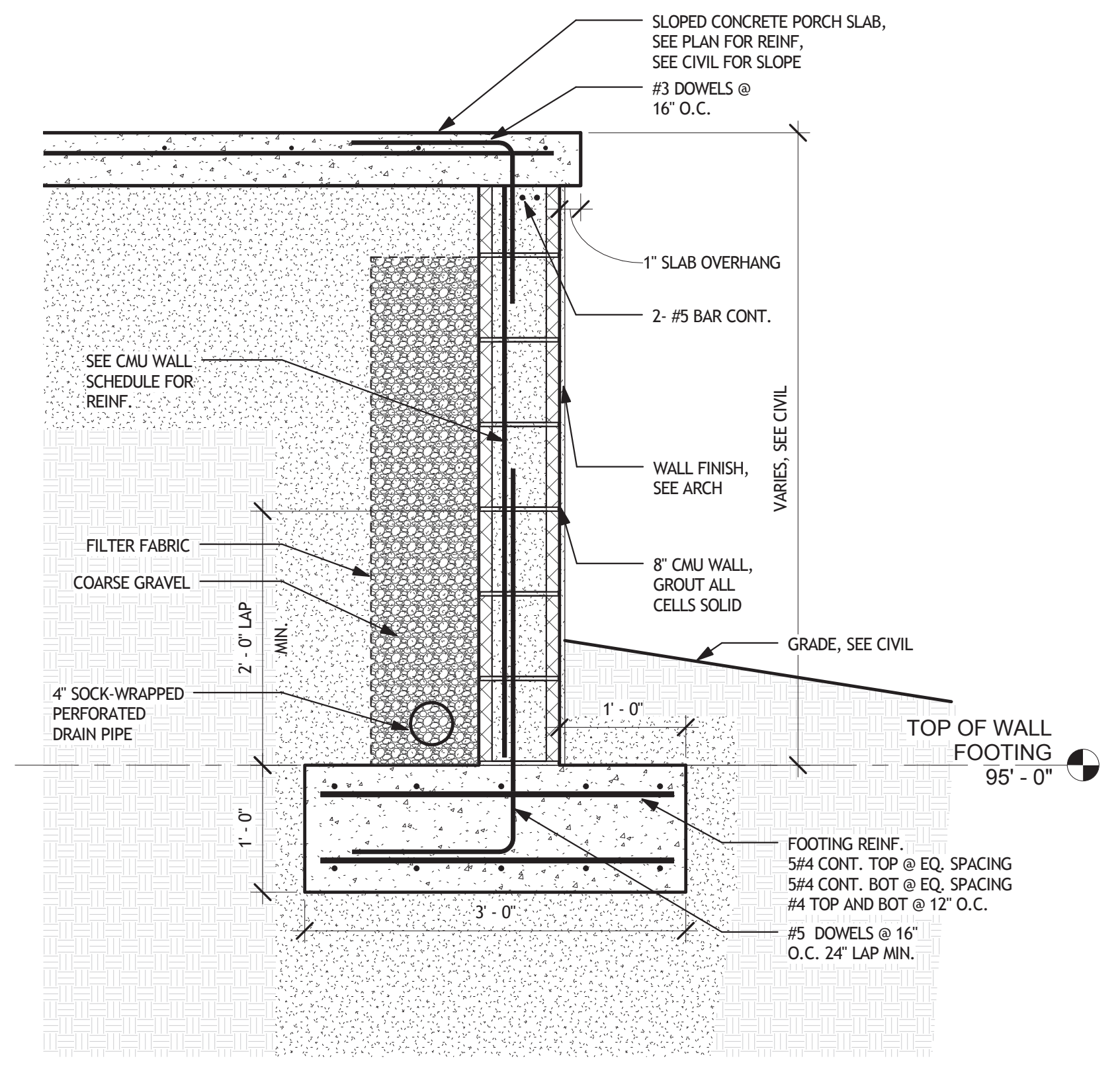
**3 FOUNDATION DETAIL 2**  
S101 SCALE: 1" = 1'-0"



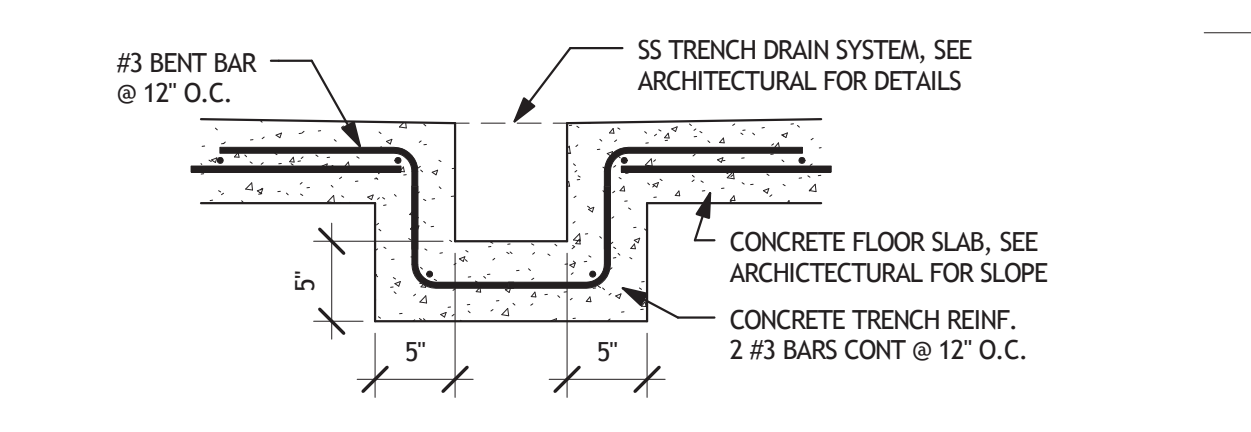
**4 FOUNDATION DETAIL 3**  
S101 SCALE: 1" = 1'-0"



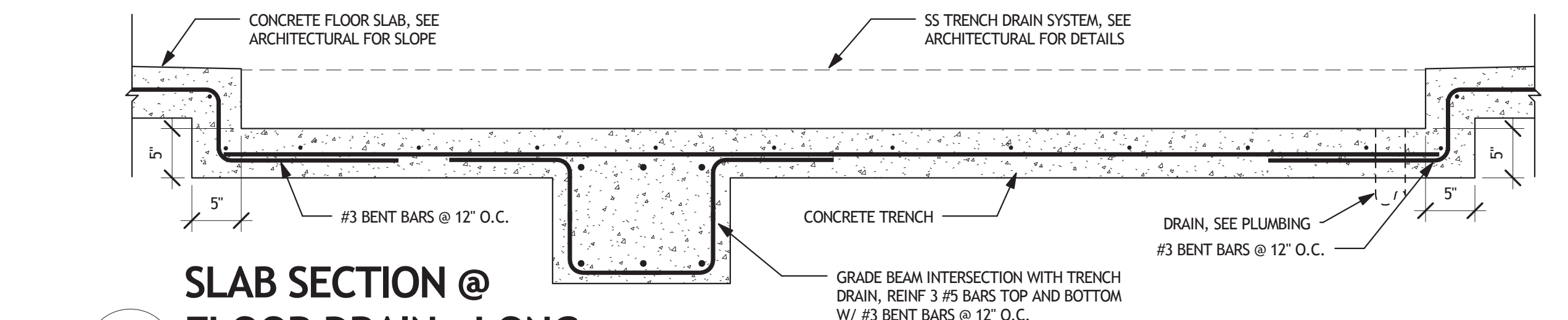
**6 PORCH SLAB DETAIL**  
S101 SCALE: 1" = 1'-0"



**7 RETAINING WALL**  
S101 SCALE: 1" = 1'-0"



**8 SLAB SECTION @ FLOOR DRAIN - SHORT**  
S101 SCALE: 1" = 1'-0"



**9 SLAB SECTION @ FLOOR DRAIN - LONG**  
S101 SCALE: 1" = 1'-0"

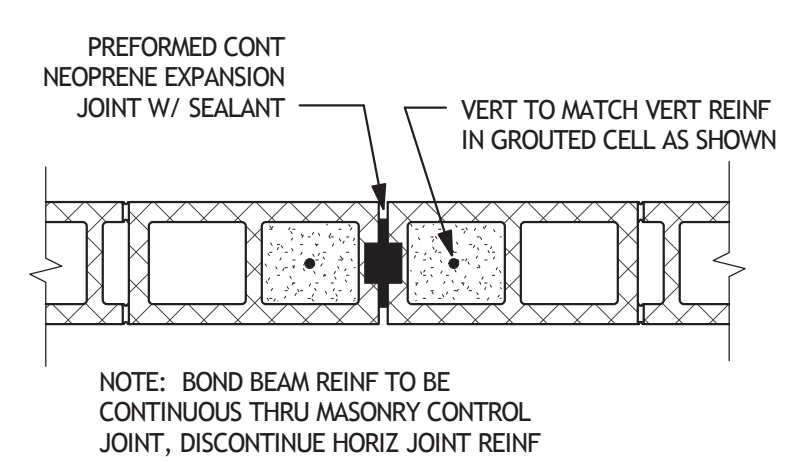
- FOUNDATION PLAN NOTES:**
- SEE S101 AND S102 FOR APPLICABLE STRUCTURAL NOTES
  - FINISHED SLAB ELEVATION IS REFERENCED AT ELEVATION 100'-0". SEE CIVIL DRAWINGS FOR USGS FINISHED SLAB ELEVATION.
  - GRADE BEAMS AND BUILDING SLAB SHALL BE POURED MONOLITHIC
  - TOP OF RETAINING WALL FOOTINGS SHALL BE AT ELEVATION 95'-0" UNLESS NOTED OTHERWISE.
  - COORDINATE LOCATION AND SIZE OF OPENINGS IN WALLS WITH ARCHITECTURAL AND MECHANICAL DRAWINGS.
  - SEE ARCHITECTURAL AND PLUMBING DRAWINGS FOR FLOOR DRAINS, RECESSED SLABS, AND SLOPED FLOOR SLABS.
  - SEE CIVIL DRAWINGS FOR SLOPED PORCH SLABS AND ADA RAMP DETAILS.
  - LOCATE TIMBER PILES ON CENTERLINES OF GRADEBEAMS UNLESS INDICATED OTHERWISE

CMU WALL SCHEDULE		
DESCRIPTION	VERTICAL REINF.*	HORIZONTAL REINF.
8" CMU (BEARING)	#5 @ 32" O.C.	STD TRUSS REINF @ 16" O.C.
12" CMU	#5 @ 32" O.C.	STD TRUSS REINF @ 16" O.C.
6" CMU	#5 @ 32" O.C.	STD TRUSS REINF @ 16" O.C.
4" CMU	#3 @ 32" O.C.	STD TRUSS REINF @ 16" O.C.
8" CMU (RETAINING)	#5 @ 16" O.C.	STD TRUSS REINF @ 16" O.C.

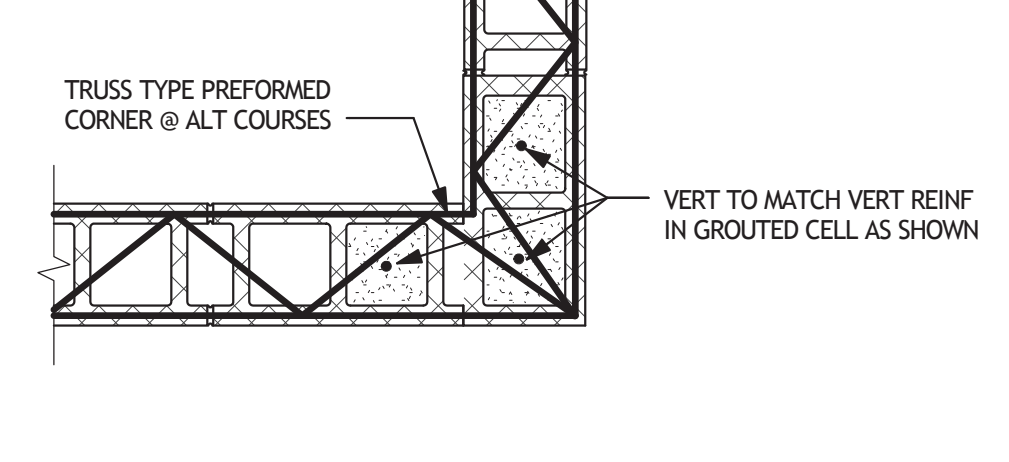
\*FULLY GROUT ALL VERTICALLY REINFORCED CELLS

**13. CONCRETE MASONRY UNITS**

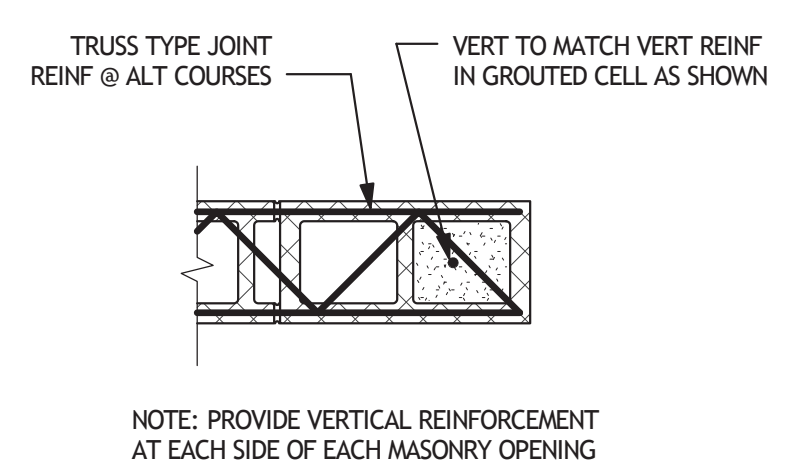
- ALL MASONRY UNITS SHALL COMPLY WITH ASTM C 90 WITH A COMPRESSIVE STRENGTH OF 1900 PSI (NET AREA).
  - FM = 1500 PSI
  - MORTAR SHALL BE TYPE S.
  - GROUT: FC = 2000 PSI MINIMUM.
- CELLS CONTAINING REBAR SHALL BE GROUTED SOLID FROM THE BOTTOM TO THE TOP OF THE WALL IN ACCORDANCE WITH THE INTERNATIONAL BUILDING CODE.
- CELLS CONTAINING EXPANSION ANCHORS SHALL BE GROUTED SOLID.
- ALL VERTICAL REBAR SHALL BE IN PLACE AND SECURED WITH REBAR POSITIONERS PRIOR TO GROUTING.
- UNLESS OTHERWISE NOTED MASONRY CELLS SHALL BE GROUTED IN ACCORDANCE WITH THE INTERNATIONAL BUILDING CODE (MAXIMUM 5 FOOT GROUT LIFTS).
- LAP REBAR 48 BAR DIAMETERS (12" MINIMUM) UNLESS NOTED OTHERWISE
- ALL HORIZONTAL REINFORCING IN BOND BEAMS SHALL BE CONTINUOUS AROUND CORNERS OR HAVE BENT (CORNER) BARS OF THE SAME SIZE AND A LAP AS NOTED ABOVE. VERTICAL STEEL SHALL CONTINUE THROUGH BOND BEAMS.
- PROVIDE STANDARD TRUSS TYPE JOINT REINFORCING AT 16" ON CENTER (ALTERNATE COURSES). USE PREFABRICATED CORNERS AND TEES AT ALL WALL CORNERS AND INTERSECTIONS RESPECTIVELY.
- SEE ARCHITECTURAL DRAWINGS AND SPECIFICATIONS FOR INFORMATION REGARDING MASONRY COLORS, FINISHES, BOND, ETC. AT ALL EXPOSED MASONRY WALLS.
- ALL MASONRY WALL CONFIGURATIONS INCLUDING WALL OPENINGS SHALL BE COORDINATED WITH CIVIL, MECHANICAL, PLUMBING, ELECTRICAL AND DRAWINGS FROM ALL OTHER DISCIPLINES.



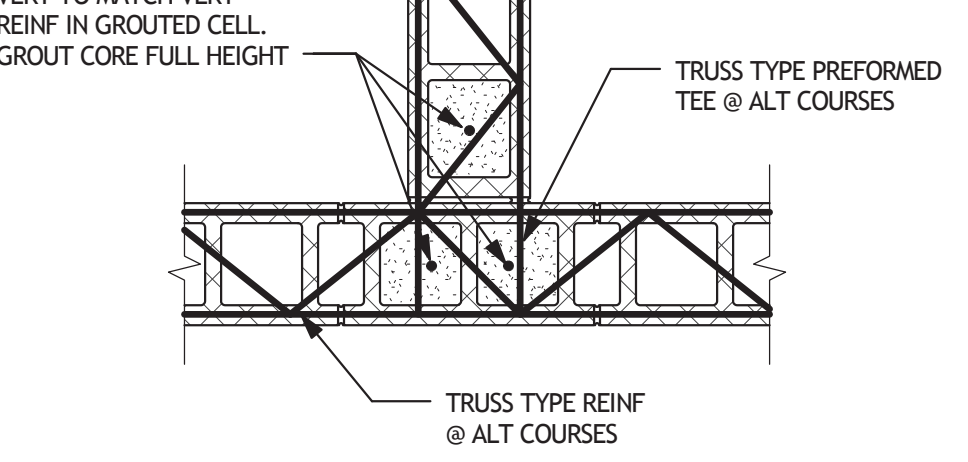
**10 TYPICAL PLAN AT CMU CONTROL JOINT (MCJ)**  
S101 SCALE: 1" = 1'-0"



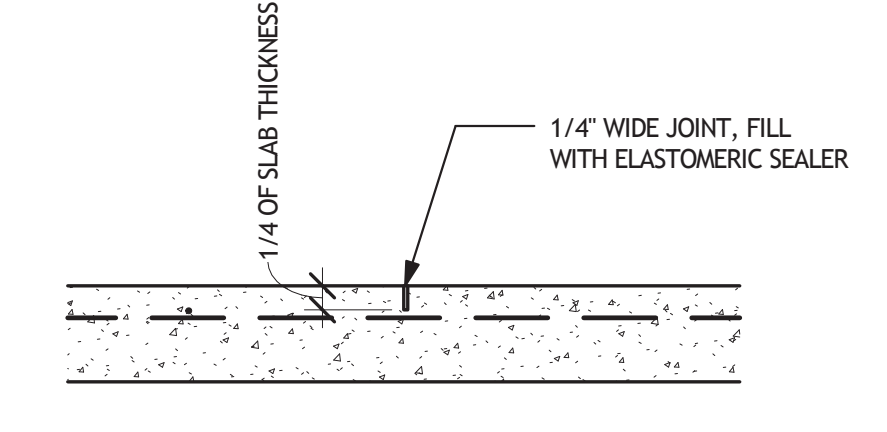
**11 TYPICAL PLAN AT CMU CORNER**  
S101 SCALE: 1" = 1'-0"



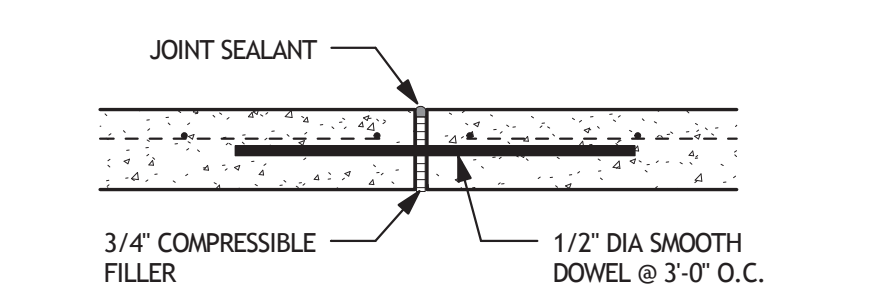
**12 TYPICAL PLAN AT CMU END WALL**  
S101 SCALE: 1" = 1'-0"



**13 TYPICAL PLAN AT CMU WALL TEE**  
S101 SCALE: 1" = 1'-0"



**14 CONTROL JOINT (CJ)**  
S101 SCALE: 1" = 1'-0"

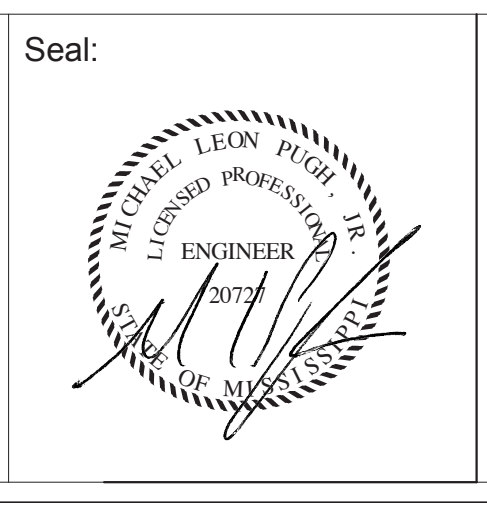


**15 EXPANSION JOINT (EJ)**  
S101 SCALE: 1" = 1'-0"

Revisions	Date

Consultants:

Seal:



A/E:

**ROYAL ENGINEERS & CONSULTANTS, LLC**

4298 ELYSIAN FIELDS AVENUE  
NEW ORLEANS, LOUISIANA 70122  
www.royalengineering.net

Approved:

PROGRAM MANAGER, PROJECTS \_\_\_\_\_

SAFETY/INDUSTRIAL HYGIENE \_\_\_\_\_

HEALTH SYSTEM SPECIALIST \_\_\_\_\_

MAINTENANCE SUPERVISOR \_\_\_\_\_

MAINTENANCE FOREMAN \_\_\_\_\_

MAINTENANCE FOREMAN \_\_\_\_\_

Drawing Title:

**FOUNDATION PLAN AND DETAILS**

Approved: Service Engineer \_\_\_\_\_

Approved: Service Director \_\_\_\_\_

Project Title:

**VA Gulf Coast Decontamination Unit**

Building Number: XX

Checked: MP

Drawn: IP

Location: VAMC BILOXI, MS

Date: 6/30/2015 4:24:40 PM

Project No.: 520-13-136

DRAWING NO.: **S101**

Dwg. Of: \_\_\_\_\_



**FOR CONSTRUCTION**