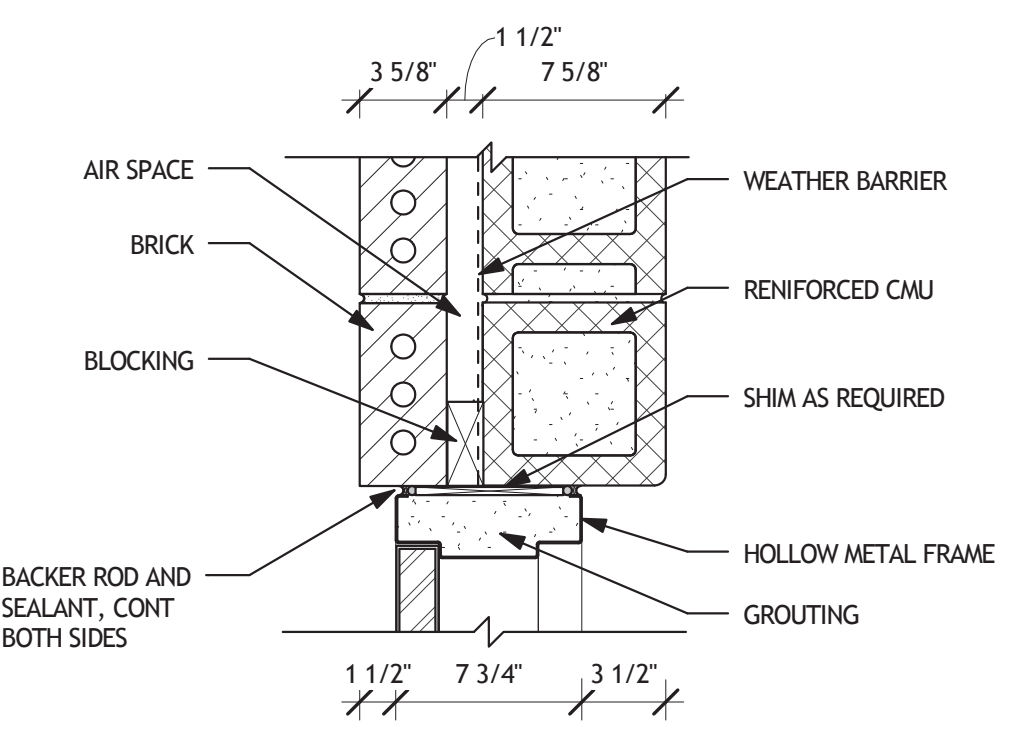
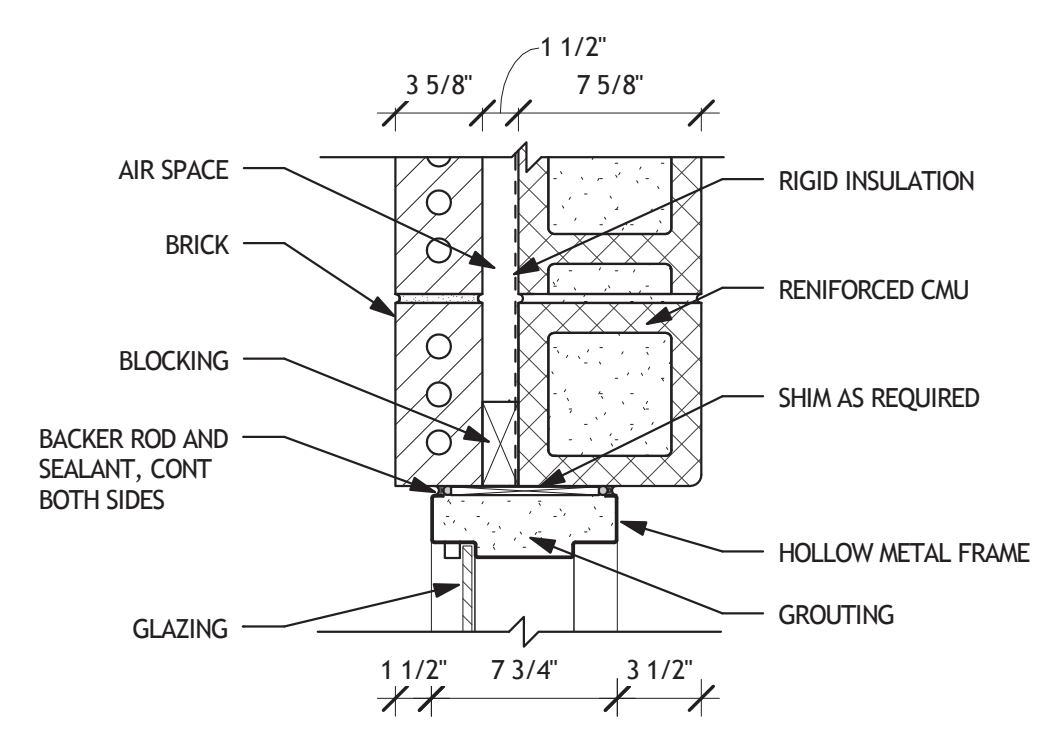


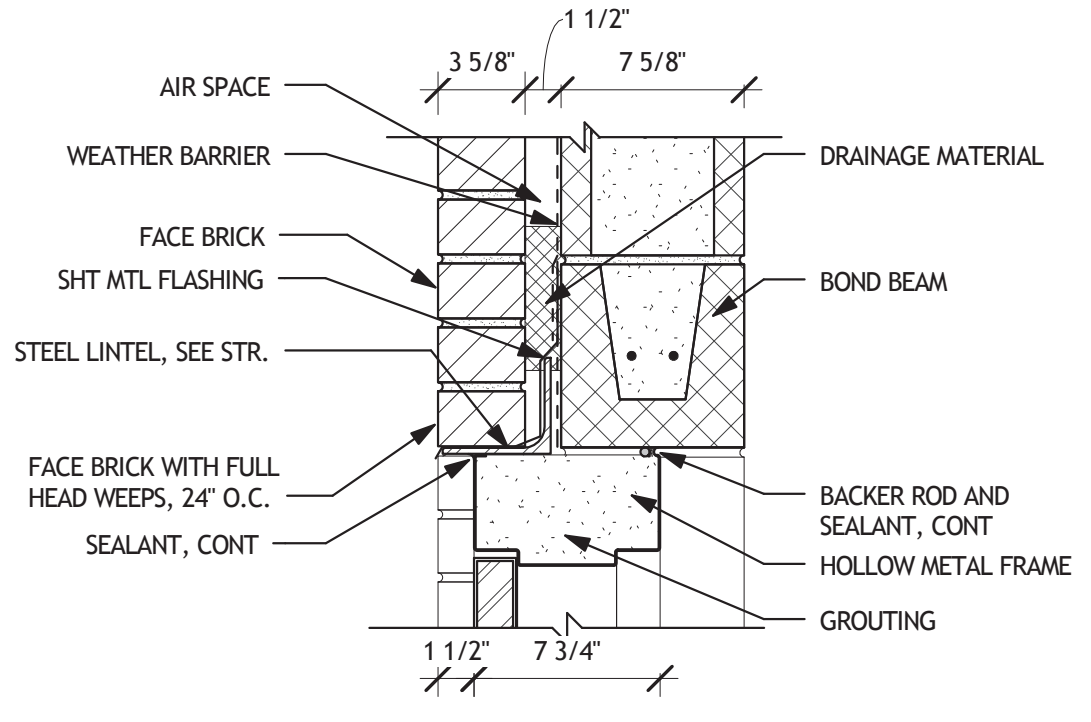
three inches = one foot
 one and one-half inches = one foot
 one inch = one foot
 three-quarters inch = one foot
 one-half inch = one foot
 three-eighths inch = one foot
 one-quarter inch = one foot
 one-eighth inch = one foot



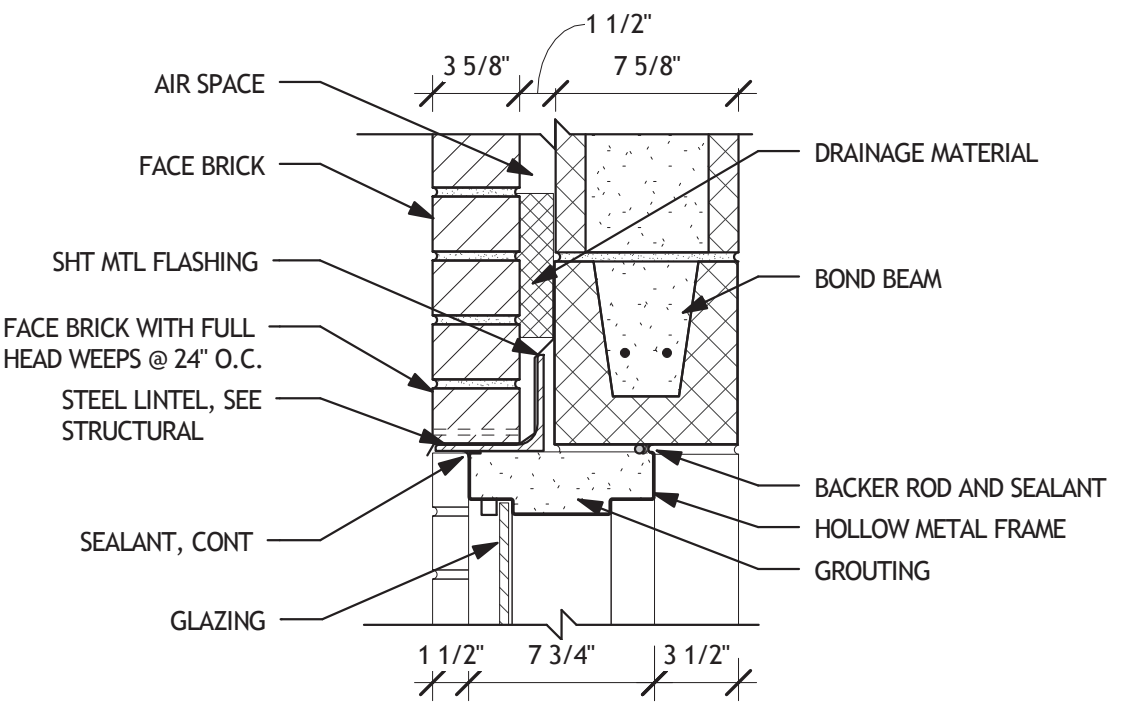
1 DOOR JAMB - EXTERIOR
 A601 SCALE: 1 1/2" = 1'-0"



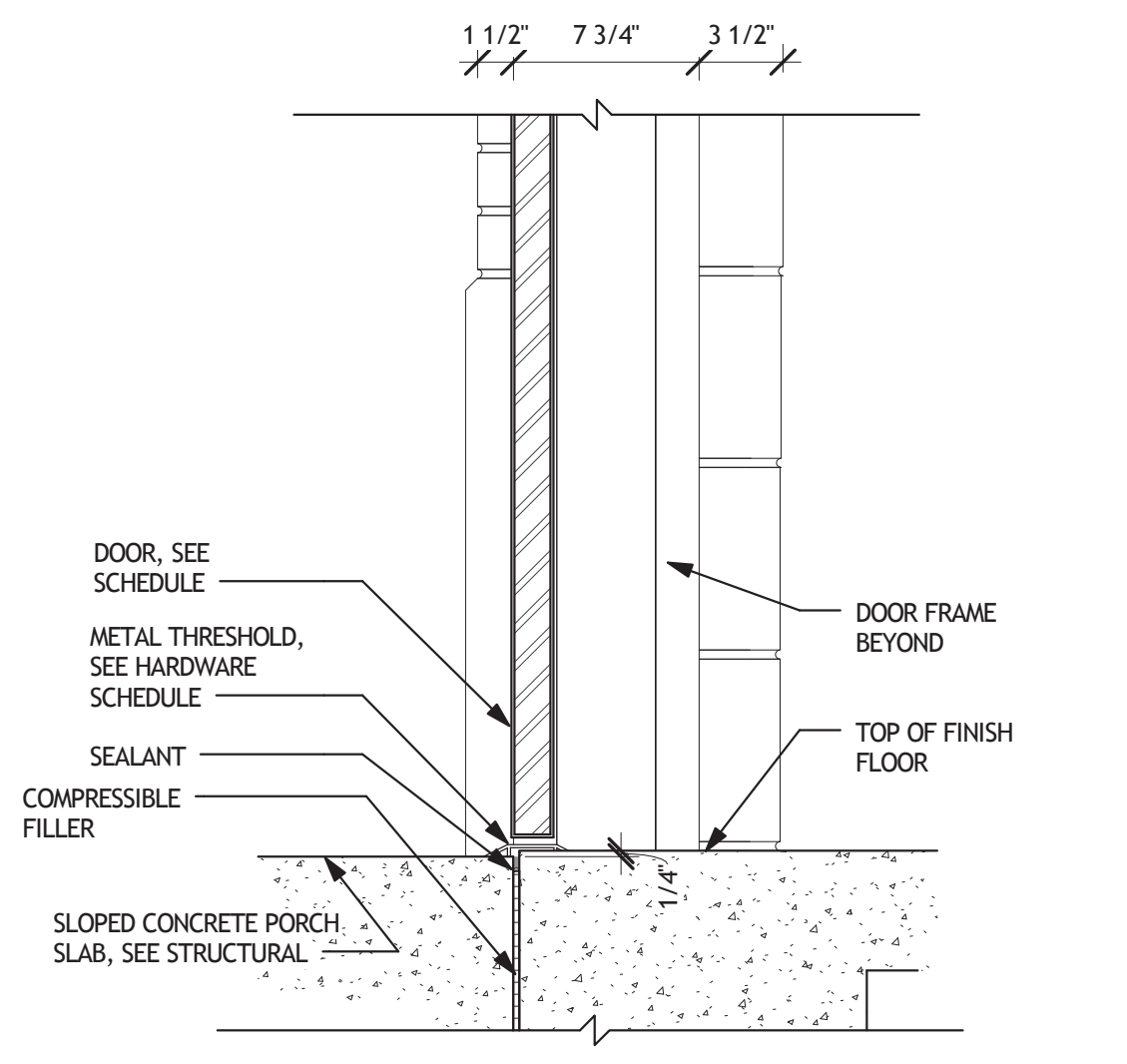
7 TRANSOM JAMB
 A601 SCALE: 1 1/2" = 1'-0"



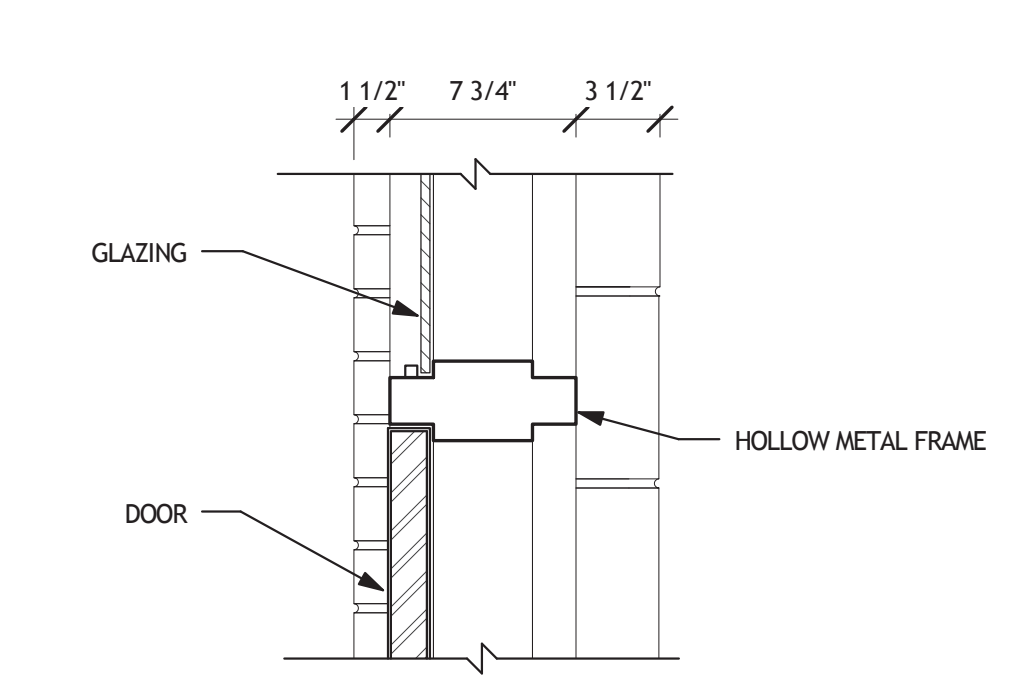
2 DOOR HEAD - EXTERIOR
 A601 SCALE: 1 1/2" = 1'-0"



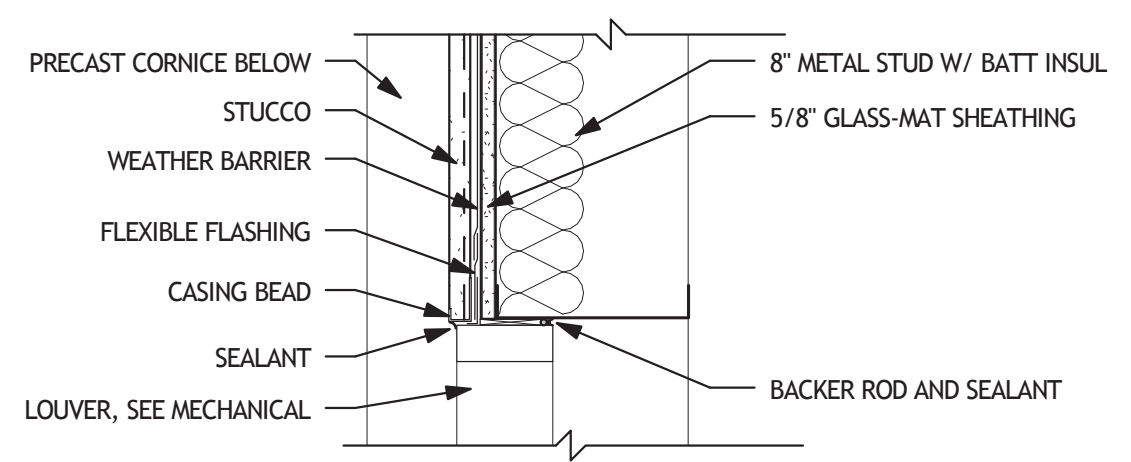
8 TRANSOM HEAD
 A601 SCALE: 1 1/2" = 1'-0"



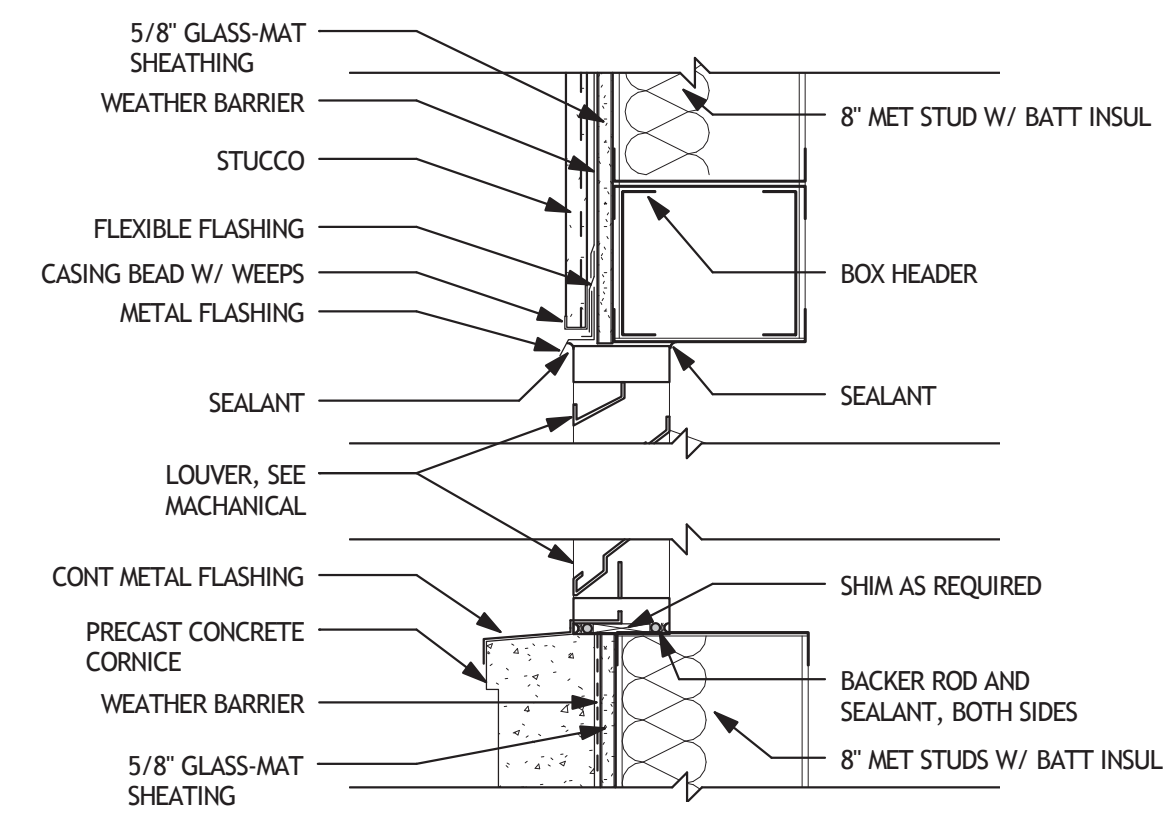
3 DOOR SILL - EXTERIOR
 A601 SCALE: 1 1/2" = 1'-0"



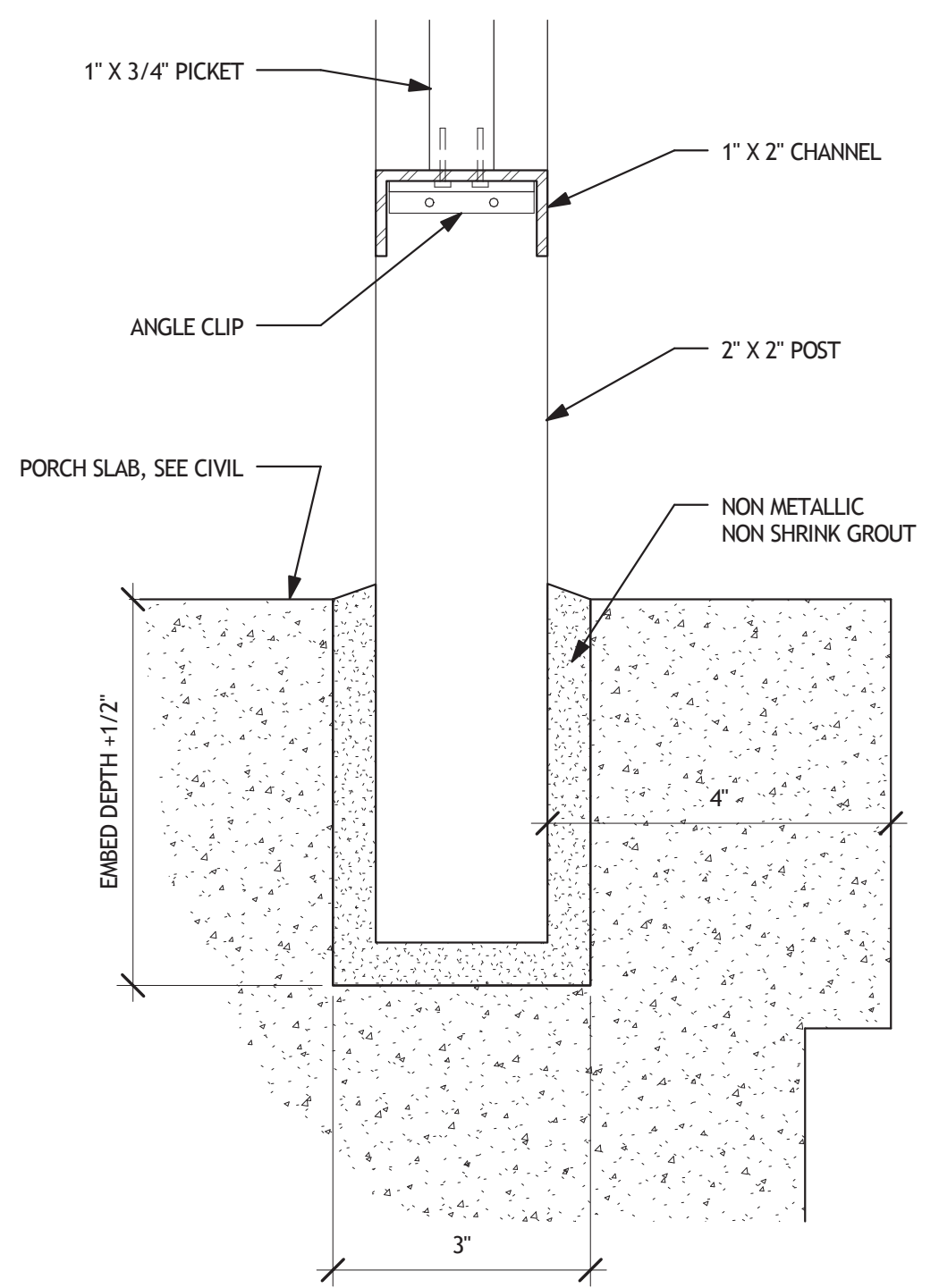
9 TRANSOM DOOR HEAD
 A601 SCALE: 1 1/2" = 1'-0"



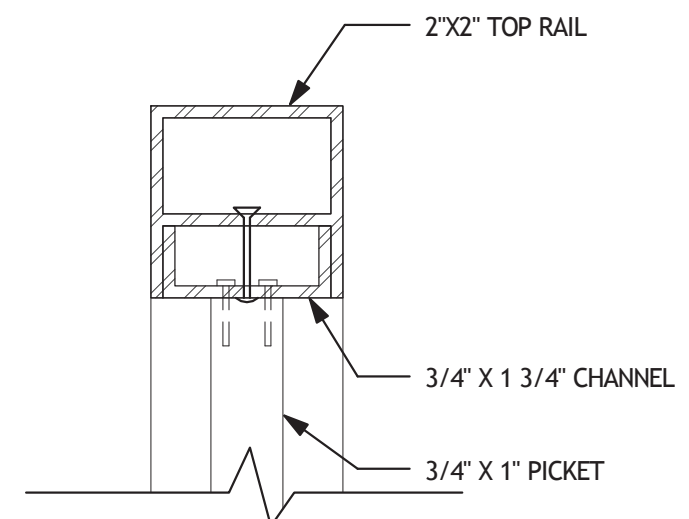
5 LOUVER JAMB
 A601 SCALE: 1 1/2" = 1'-0"



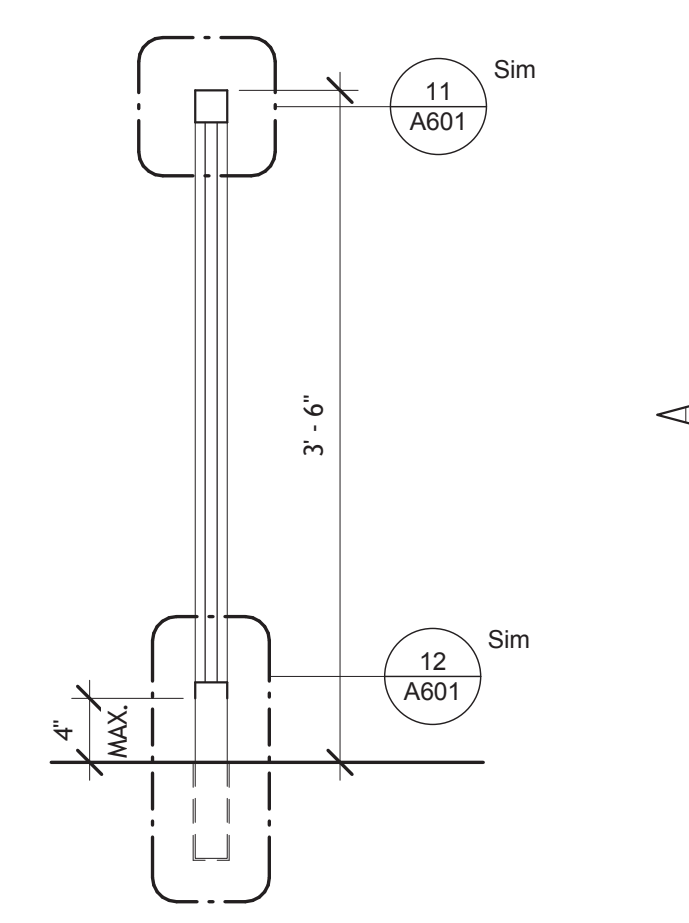
4 LOUVER SECTION
 A601 SCALE: 1 1/2" = 1'-0"



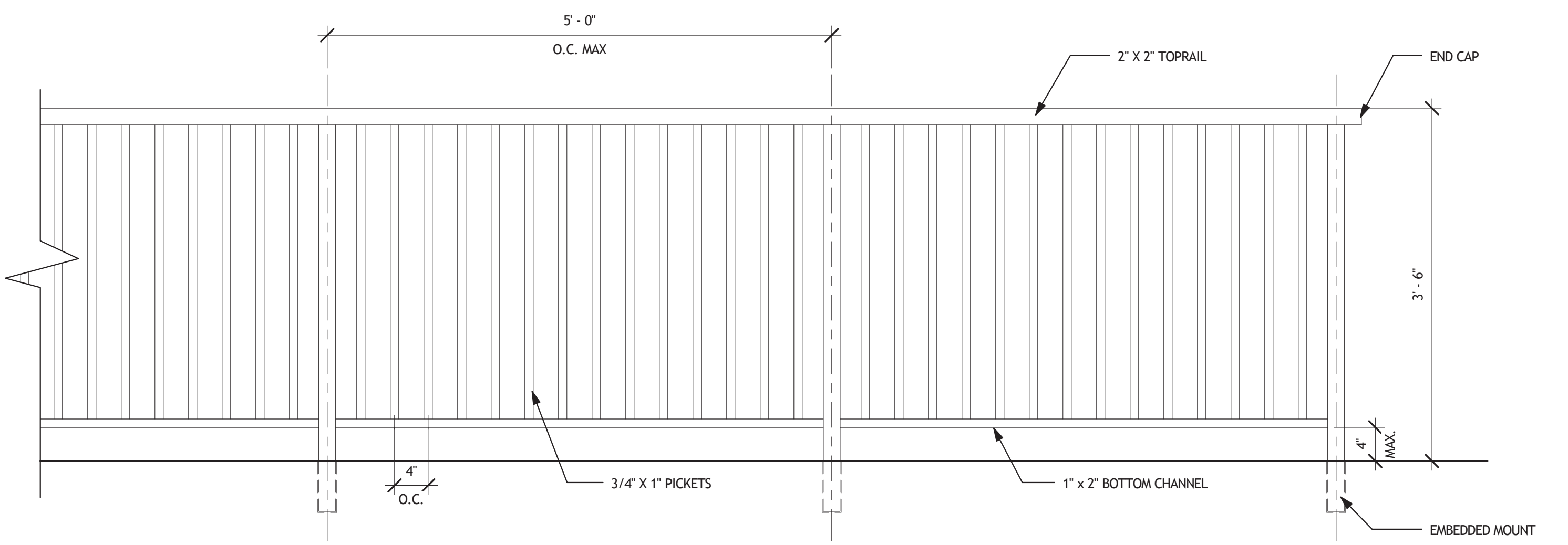
12 BOTTOM RAIL DETAIL
 A601 SCALE: 6" = 1'-0"



11 TOP RAIL DETAIL
 A601 SCALE: 6" = 1'-0"



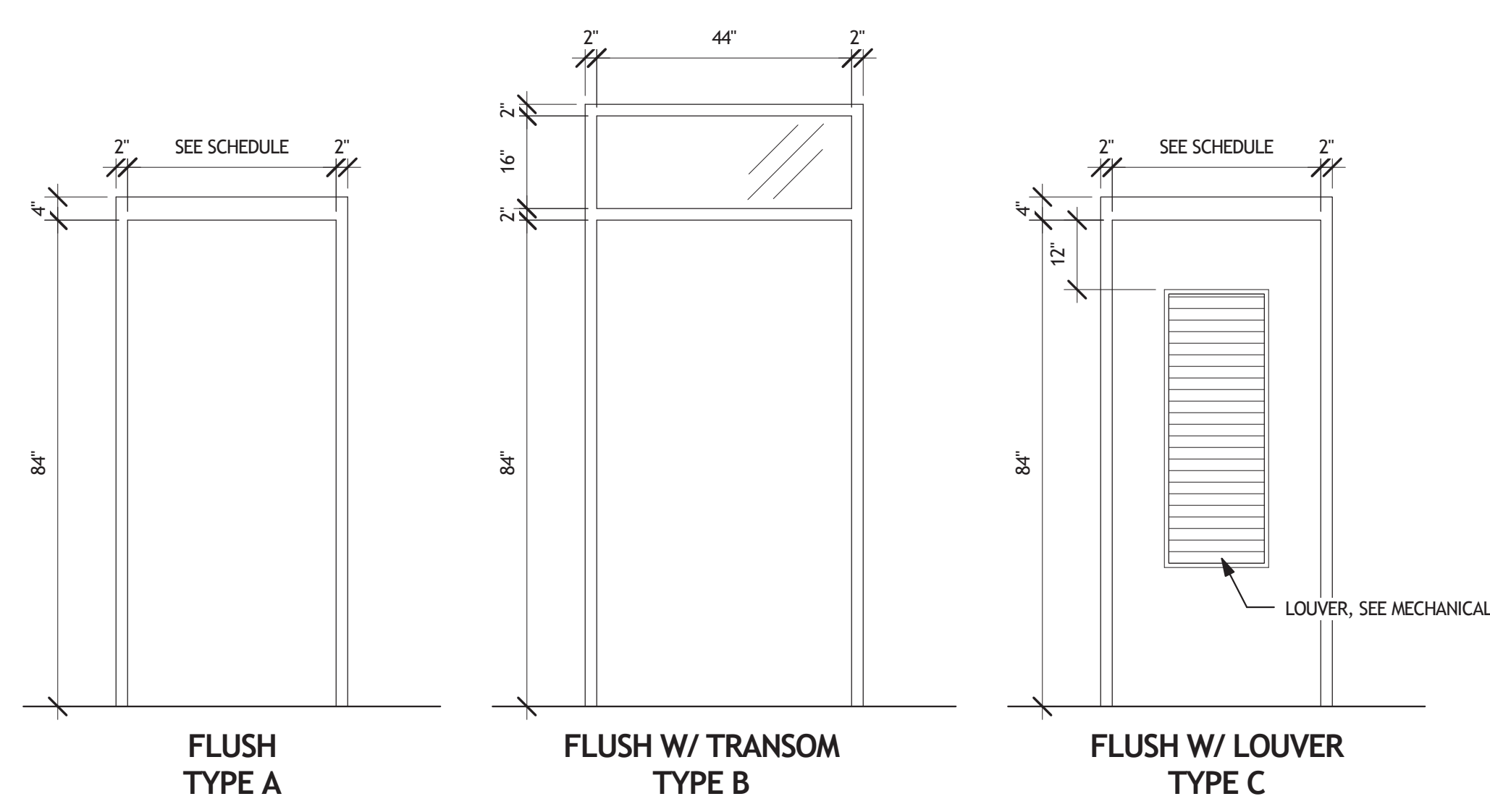
10 GUARDRAIL SECTION
 A601 SCALE: 1" = 1'-0"



6 GUARDRAIL ELEVATION
 A601 SCALE: 1" = 1'-0"

MARK	TYPE	DOOR					FIRE RATING	HARDWARE SET	FRAME			COMMENTS	
		WIDTH	HEIGHT	THICK	MATERIAL	FINISH			HEAD	JAMB	SILL		MATERIAL
101	B	3' - 8"	7' - 0"	1 3/4"	HM	EPX-4	2	8/9/A921	1/A921	3/A921	HM	EPX-4	
102	B	3' - 8"	7' - 0"	1 3/4"	HM	EPX-4	2	8/9/A921	1/A921	3/A921	HM	EPX-4	
103	B	3' - 8"	7' - 0"	1 3/4"	HM	EPX-4	2	8/9/A921	1/A921	3/A921	HM	EPX-4	
104	B	3' - 8"	7' - 0"	1 3/4"	HM	EPX-4	2	8/9/A921	1/A921	3/A921	HM	EPX-4	
105	B	3' - 8"	7' - 0"	1 3/4"	HM	EPX-4	2	8/9/A921	1/A921	3/A921	HM	EPX-4	
106	B	3' - 8"	7' - 0"	1 3/4"	HM	EPX-4	2	8/9/A921	1/A921	3/A921	HM	EPX-4	
107	C	3' - 0"	7' - 0"	1 3/4"	HM	EPX-4	1	2/A921	1/A921	3/A921	HM	EPX-4	
109	A	3' - 0"	7' - 0"	1 3/4"	HM	EPX-4	3	2/A921	1/A921	3/A921	HM	EPX-4	

DOOR TYPES



ROOM FINISH SCHEDULE						
Number	Name	Floor Finish	Base Finish	Wall Finish	Ceiling Finish	Ceiling Height
101	WOMEN DECON DIRTY	EPX-1	None	EPX-2	EPX-3	9' - 8"
102	NON-AMBULATORY DECON DIRTY	EPX-1	None	EPX-2	EPX-3	9' - 8"
103	MEN DECON DIRTY	EPX-1	None	EPX-2	EPX-3	9' - 8"
104	WOMEN DECON CLEAN	EPX-1	None	EPX-2	EPX-3	9' - 8"
105	NON-AMBULATORY DECON CLEAN	EPX-1	None	EPX-2	EPX-3	9' - 8"
106	MEN DECON CLEAN	EPX-1	None	EPX-2	EPX-3	9' - 8"
107	MECHANICAL	Unfinished	None	Unfinished	GYP BD	9' - 8"
108	DRESSING ROOM	EPX-1	None	EPX-2	EPX-3	9' - 8"

FINISH LEGEND			
FINISH	DESCRIPTION	TYPE	COLOR
EP-1	2 PART EPOXY-POLYAMIDE COATING	MPI 77	BY OWNER
EP-2	2 PART EPOXY-POLYAMIDE COATING	MPI 77	BY OWNER
EP-3	2 PART EPOXY-POLYAMIDE COATING	MPI 77	BY OWNER
EP-4	2 PART EPOXY-POLYAMIDE COATING	MPI 77	BY OWNER

EXTERIOR FINISH SCHEDULE			
LOCATION/ITEM	DESCRIPTION	TYPE	COLOR
FACE BRICK	MODULAR	FBS	MATCH EXISTING
GUARDRAIL	BAKED ENAMEL	KYNAR 500	MATCH ROOF
STUCCO	CEP	TT-P-1411	MATCH EXISTING
RETAINING WALL	PARGE COAT, CEP	MPI 77	MATCH STUCCO
SHEET METAL	FLUOROCARBON FINISH	AAMA 621	MATCH EXISTING
GUTTERS	FLUOROCARBON FINISH	AAMA 621	MATCH EXISTING
DOWNSPOUTS	FLUOROCARBON FINISH	AAMA 621	MATCH EXISTING
STANDING SEAM METAL ROOF	FLUOROCARBON FINISH	BY MANUFACTURER	MATCH EXISTING
DOWNSPOUT BOOTS	EXTERIOR ALKYD, FLAT	MPI 8	BY OWNER

NOTE: MATCH EXISTING REFERS TO MATCHING THE FINISH COLOR OF THE SAME ELEMENT IN THE ADJACENT BUILDING (BUILDING 30)

Revisions	Date

Consultants:
 Seal:
 A/E:

Seal:

A/E:
ROYAL ENGINEERS & CONSULTANTS, LLC
 4298 ELYSIAN FIELDS AVENUE
 NEW ORLEANS, LOUISIANA 70122
 www.royalengineering.net

Approved:
 PROGRAM MANAGER, PROJECTS
 SAFETY/INDUSTRIAL HYGIENE
 HEALTH SYSTEM SPECIALIST
 MAINTENANCE SUPERVISOR
 MAINTENANCE FOREMAN
 MAINTENANCE FOREMAN

DOOR AND FINISH SCHEDULES AND DETAILS
 Approved: Service Engineer
 Approved: Service Director

Project Title: **VA Gulf Coast Decontamination Unit**
 Date: 6/30/2015 4:23:32 PM
 Project No.: 520-13-136
 Building Number: XX
 Checked: MP
 Drawn: IP
 Location: VAMC BILOXI, MS
 DRAWING NO.: **A601**
 Dwg. Of:

FOR CONSTRUCTION

Department of Veterans Affairs