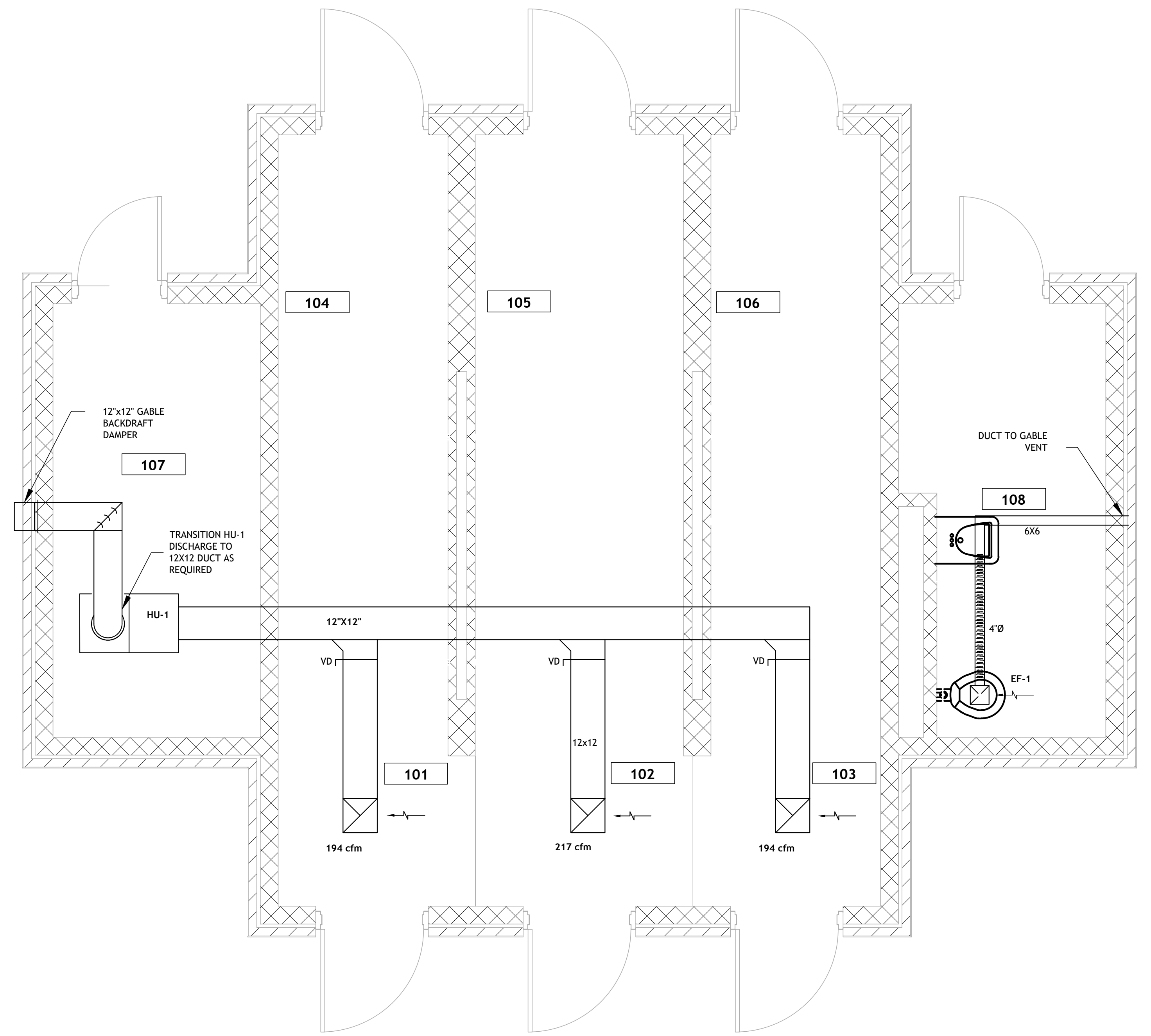


1 HVAC SUPPLY PLAN
M201 SCALE: 3/8" = 1'-0"



2 HVAC EXHAUST PLAN
M201 SCALE: 3/8" = 1'-0"

AIR HANDLING UNIT CHILLED WATER COIL DATA				AHU DATA	
REQUIRED SENSIBLE COOLING, BTUH	REQUIRED LATENT COOLING, BTUH	CFM	SYSTEM E.S.P., IN H2O	AVAILABLE CHILLED WATER DIFFERENTIAL, PSI	FAN H.P.
33,000	26,000	808	.63	10	1

ELECTRIC HEAT DATA			EXHAUST FAN DATA			
UNIT	REQUIRED HEAT, KW	VOLT/PH	UNIT	CFM	STATIC VOLT/PH	HP
DH-1	17	480/3	EF-1	80	.25	110/1
			HU-1	1200	.25	110/1

NOTES:

DH-1 SHALL BE 2 STAGE MINIMUM WITH CORRESPONDING STAGED HEAT THERMOSTAT.

EF-1 AND HEPA UNIT (HU-1) SHALL BE INTERLOCKED TO RUN WITH AHU-1 IN ADDITION TO LOCAL HAND CONTROLS.

HU-1 SHALL BE EQUIPPED WITH A LOCAL VARIABLE SPEED CONTROLS. DURING DECON EVENT, EXHAUST RATE OF DECON AREA TO BE INCREASED BY ADJUSTING WALL MOUNTED HU-1 SPEED CONTROLLER.

INSTALL PERMANENT FLOW METER ON CWS PIPING

DUCT SHALL HAVE A MINIMUM 1" PRESSURE CLASSIFICATION, BASED ON MAXIMUM 1500 FPM

ROUTE MAIN CONDENSATE FROM AHU TO NEAREST DRAIN.

FLEX DUCT SHALL TRANSITION TO RIGID ELBOWS TO THE DIFFUSERS

RECT ELBOWS SHALL BE RADIUS TYPE

SUPPLY DIFFUSER BASIS OF DESIGN IS TITUS TDV, 8" ROUND NECK, MAX .08" PRESS. LOSS.

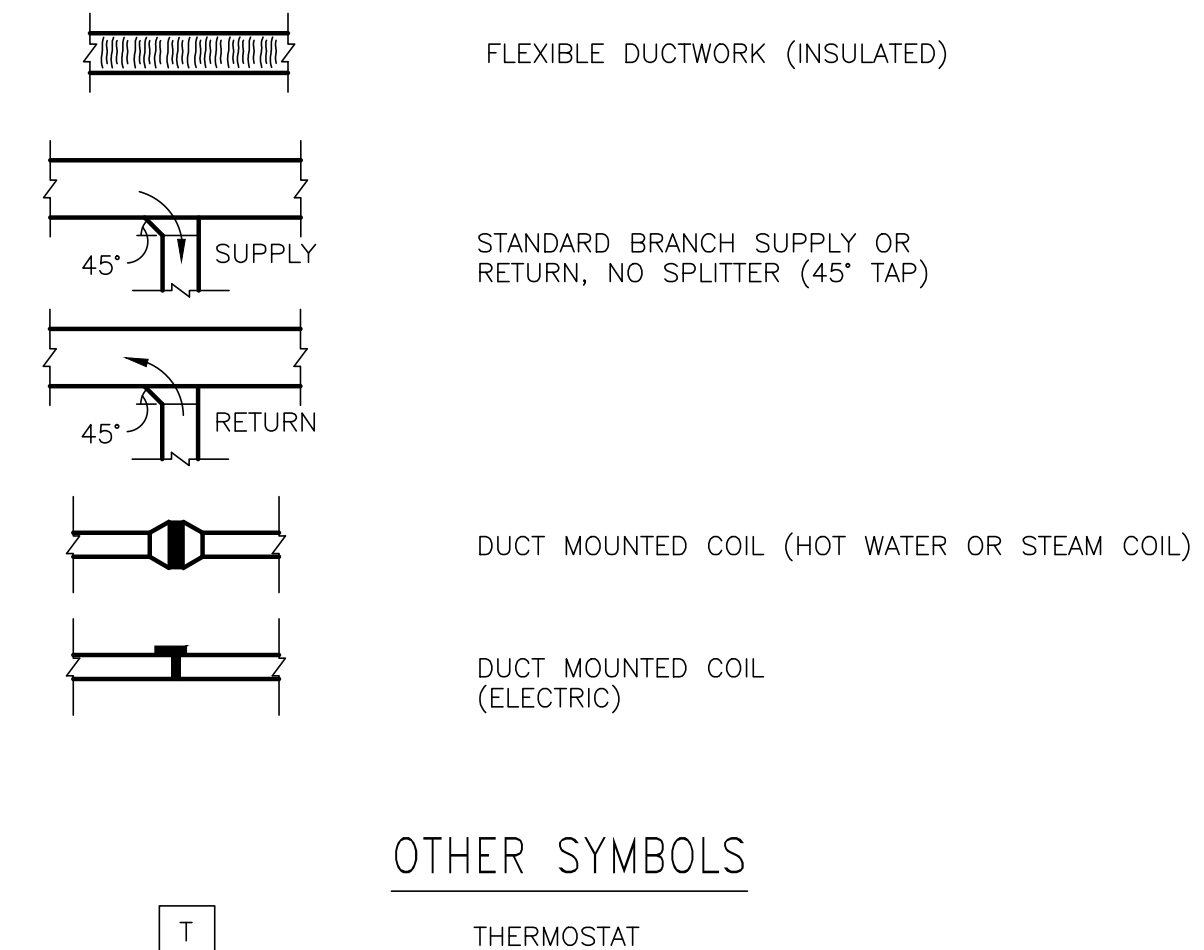
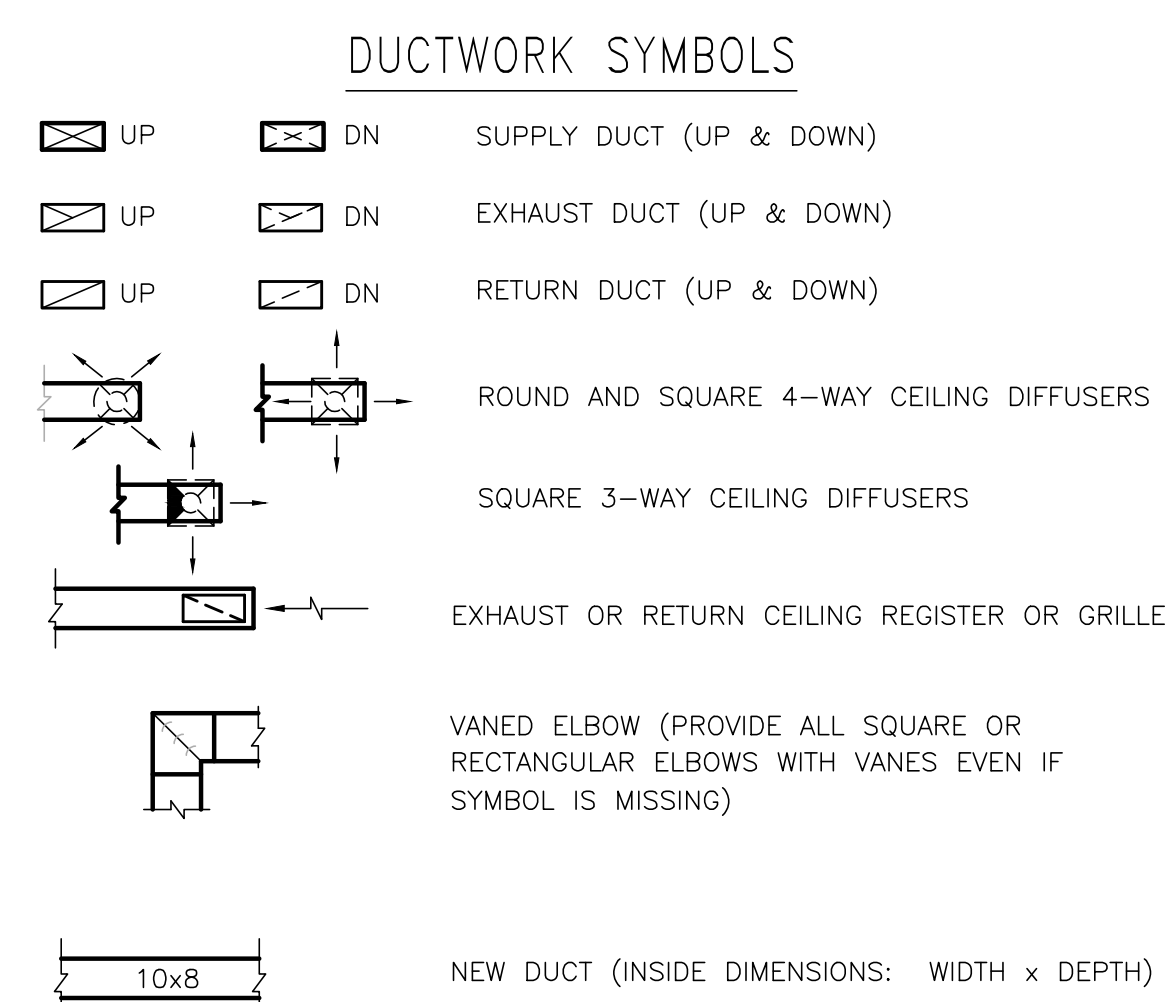
EXHAUST GRILL BASIS OF DESIGN IS TITUS 350RL, MAX .02" PRESS. LOSS

TOP OF DOOR LOUVER SHALL BE INSTALLED 12" FROM TOP OF DOOR PANEL.

HANG HU-1 WITH THREADED RODS GALV. STRUT TYPE CHANNELS. BOTTOM OF STRUCTURAL SUPPORTS SHALL BE AT 78".

GABLE EXHAUST BACKDRAFT DAMPERS BASIS OF DESIGN GREENHECK WD300 SERIES.

CONTRACTOR SHALL PROVIDE ALL NECESSARY LABOR AND MATERIALS REQUIRED TO PROVIDE SUPERVISION OF THE DECON BUILDING HVAC SYSTEM BY THE VA COMPLEX MAIN BUILDING AUTOMATION SYSTEM. CONTRACTOR SHALL DETERMINE AND COORDINATE REQUIREMENTS PRIOR TO BID.



Revisions	Date

Consultants:

BK| BURK-KLEINPETER, INC.
ENGINEERS, ARCHITECTS, PLANNERS, ENVIRONMENTAL SCIENTISTS
4176 CANAL STREET, NEW ORLEANS, LA 70119-5994
PHONE (504)486-5904 FAX (504)488-1714

Seal:

ROYAL ENGINEERS & CONSULTANTS, LLC
4298 ELYSIAN FIELDS AVENUE
NEW ORLEANS, LOUISIANA 70122
www.royalengineering.net

Approved:

PROGRAM MANAGER, PROJECTS _____

SAFETY/INDUSTRIAL HYGIENE _____

HEALTH SYSTEM SPECIALIST _____

MAINTENANCE SUPERVISOR _____

MAINTENANCE FOREMAN _____

MAINTENANCE FOREMAN _____

HVAC PLAN

Approved: Service Engineer _____

Approved: Service Director _____

Project Title: **VA Gulf Coast Decontamination Unit**

Date: 7/17/2015

Project No.: 520-13-136

Drawing No.: **M201**

Dwg. Of: _____

Building Number: XX

Checked: MJ

Drawn: ACM

Location: VAMC BILOXI, MS

FOR CONSTRUCTION

Office of Facilities

Department of Veterans Affairs