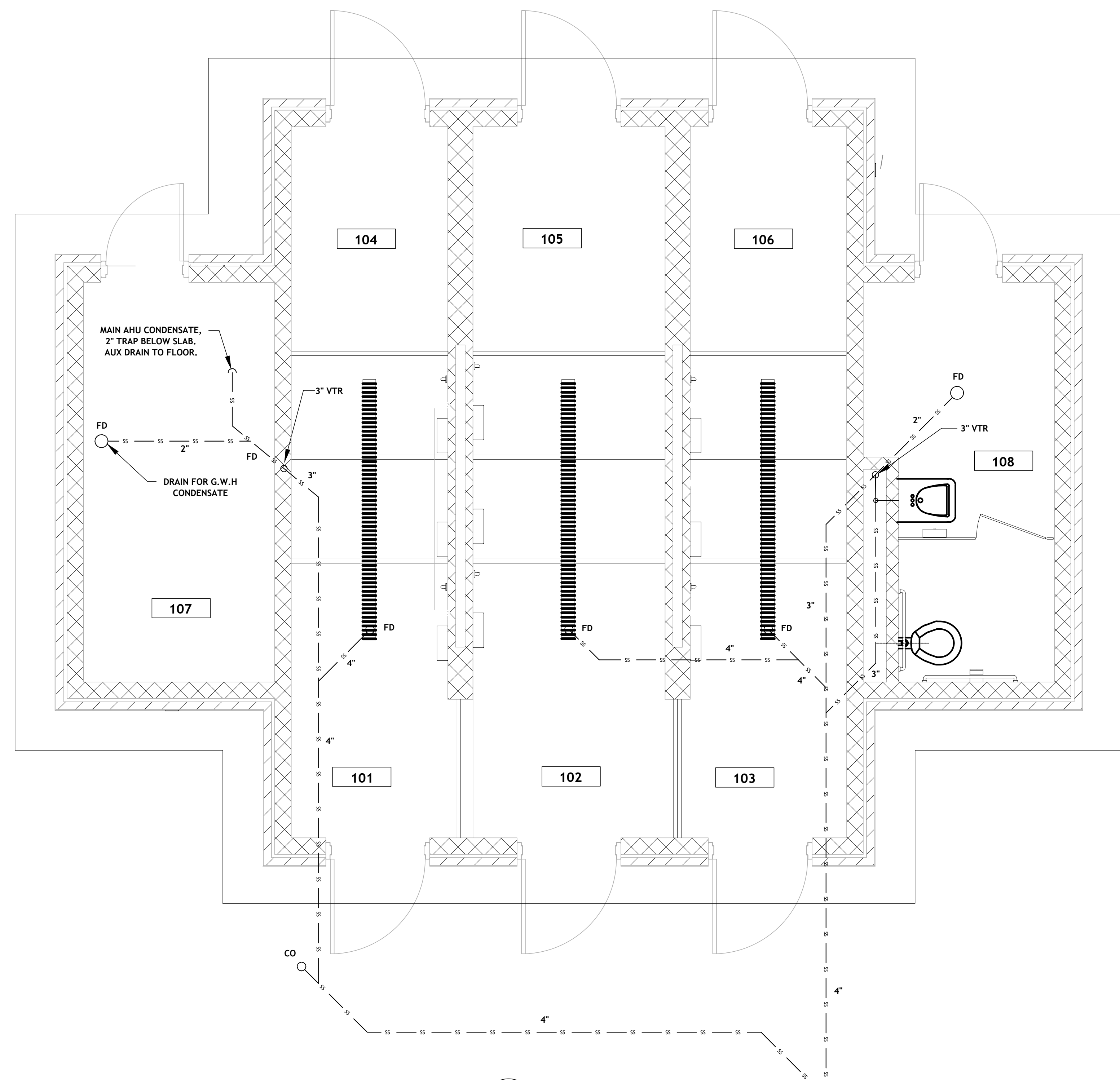
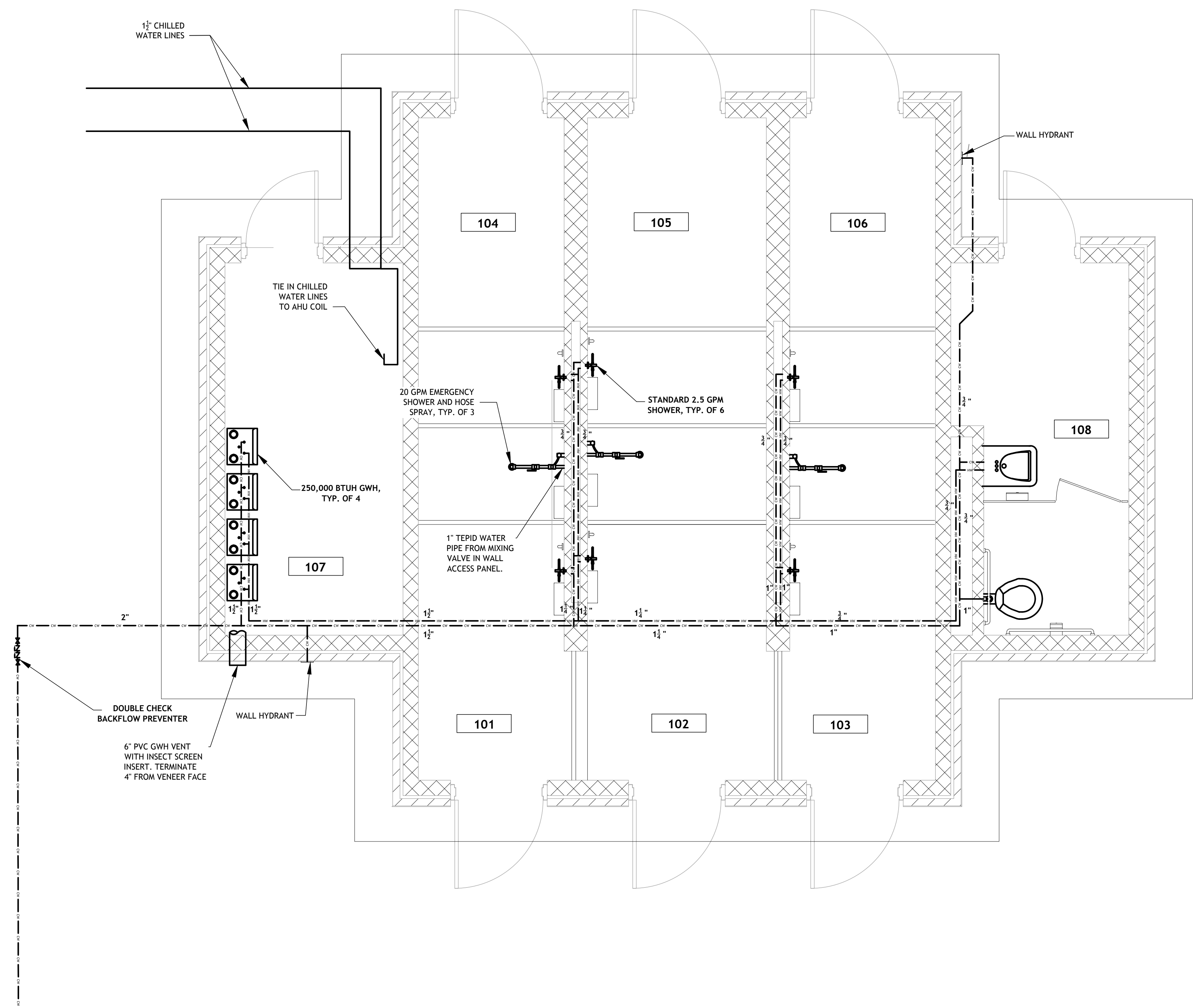


three inches = one foot
 one and one-half inches = one foot
 one inch = one foot
 three-quarters inch = one foot
 one-half inch = one foot
 three-eighths inch = one foot
 one-quarter inch = one foot
 one-eighth inch = one foot



1 PLUMBING (SEWER) PLAN
 M301 SCALE: 3/8" = 1'-0"



2 PLUMBING (WATER) PLAN
 M301 SCALE: 3/8" = 1'-0"

NOTES:
 FURNISH AND INSTALL CHILLED WATER SOLENOID AND ISOLATION VALVES. IN ADDITION TO OTHER ACCESSORIES AS RECOMMENDED BY THE AHU VENDOR FOR A COMPLETE AND FULLY OPERATIONAL SYSTEM.
 INSTALL EMERGENCY SHOWER THERMOSTATIC MIXING VALVE IN FLUSH, S.S., WATERTIGHT CABINET IN WALL. CABINET BOTTOM TO BE 54" AFF.
 EMERGENCY SHOWER SUPPLY PIPE SHALL EXIT WALL HORIZONTALLY AND CONNECT TO SHOWER SIDE CONNECTION. TOP CONNECTION SHALL REMAIN PLUGGED.
 CONTRACTOR SHALL FURNISH AND INSTALL ALL EQUIPMENT NECESSARY TO MONITOR UNDERGROUND SEWAGE STORAGE TANK. SEE SPECIFICATIONS AND SHEET FOR M101 FOR MORE INFO.

PLUMBING LEGEND

- CW — NEW COLD WATER PIPING
- HW — NEW HOT WATER PIPING
- SS — NEW SANITARY SEWER
- G — NEW GAS PIPING
- CO — SEWER CLEAN OUT
- FD — FLOOR DRAIN
- FCO — SEWER FLOOR CLEANOUT
- WH — WALL HYDRANT
- VTR — VENT TO ROOF
- VT — VENT
- GWH — GAS WATER HEATER
- BFP — BACKFLOW PREVENTER

| Revisions | Date |
|-----------|------|
| | |
| | |
| | |
| | |
| | |
| | |
| | |
| | |
| | |
| | |

Consultants:

BK1 BURK-KLEINPETER, INC.
 ENGINEERS, ARCHITECTS, PLANNERS, ENVIRONMENTAL SCIENTISTS
 4176 CANAL STREET, NEW ORLEANS, LA 70119-5994
 PHONE (504)486-5904 FAX (504)488-1714

Seal:

ROYAL ENGINEERS & CONSULTANTS, LLC
 4298 ELYSIAN FIELDS AVENUE
 NEW ORLEANS, LOUISIANA 70122
 www.royalengineering.net

Approved:

PROGRAM MANAGER, PROJECTS _____
 SAFETY/INDUSTRIAL HYGIENE _____
 HEALTH SYSTEM SPECIALIST _____
 MAINTENANCE SUPERVISOR _____
 MAINTENANCE FOREMAN _____
 MAINTENANCE FOREMAN _____

PLUMBING PLAN

Approved: Service Engineer _____
 Approved: Service Director _____

Project Title: **VA Gulf Coast Decontamination Unit**

Date: 7/17/2015

Project No.: 520-13-136

Drawing No.: **M301**

Dwg. Of: _____

FOR CONSTRUCTION

Office of Facilities

Department of Veterans Affairs