

E400 NOTES:

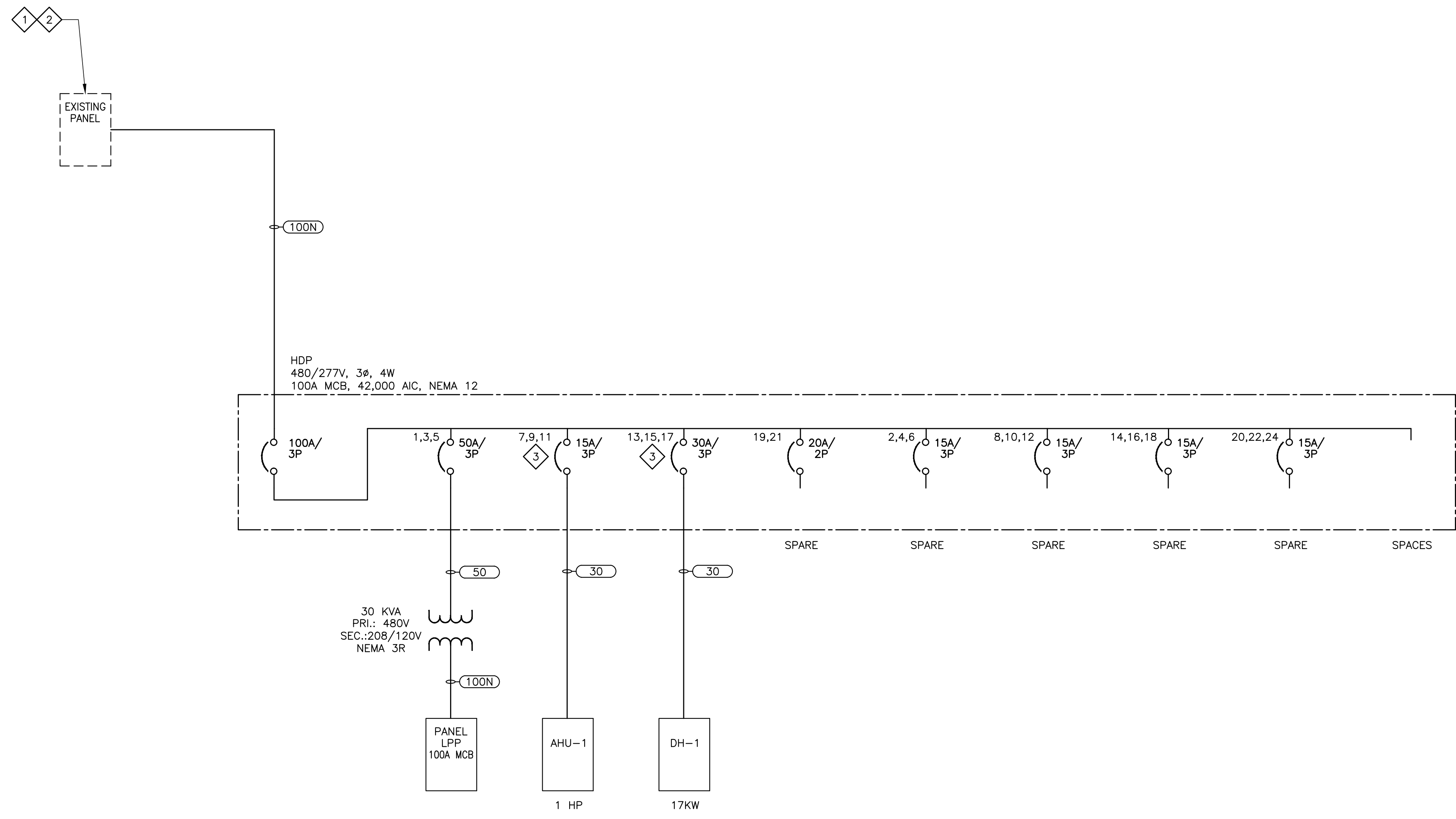
1. DASH LINES "-----" INDICATE EXISTING EQUIPMENT TO REMAIN.

E400 SPECIFIC NOTES:

- 1. EXISTING GE 800A, 3P, 4W, 480/277V MLO, NEMA 1 LOCATED IN ROOM 1F10.
- 2. ADD NEW GE HI-BREAK CAT NO. SGLB36B00225, 65 KAIC, 100A/3P BREAKER IN AVAILABLE SPACE.
- 3. CIRCUIT BREAKER SHALL HAVE PERMANENT PROVISIONS INSTALLED TO LOCK BREAKER IN THE OPEN POSITION FOR MAINTENANCE SAFETY PURPOSES.

CIR NO.		CIRCUIT DESCRIPTION		C/B TRIP	POLE	KVA	PHASES			KVA	POLE	C/B TRIP	CIRCUIT DESCRIPTION	CIR NO.
							A	B	C					
1	ROOM 107 LTS.	20	1	0.12		0.99				0.86	1	20	HU-1	2
3	RM 101, 102, 103 LTS.	20	1	0.83		1.79				0.96	1	20	GAS WATER HEATERS	4
5	ROOM 108 LTS.	20	1	0.10				0.28		0.18	1	20	RM 107 RECPT.	6
7	EXTERIOR LTS.	20	1	0.31		0.85				0.54	1	20	RM 101, 102, 103 RECPT.	8
9	SPARE	20	1					0.36		0.36	1	20	ROOM 108 RECPT.	10
11	SPARE	20	1						0.53	0.53	1	20	EF-1	12
13	SPARE	20	1			0.72				0.72	1	20	EXTERIOR RECPT.	14
15	SPARE	20	1					0.36		0.36	1	20	LEAK MONITORING SYSTEM	16
17	SPARE	20	1								1	20	SPARE	18
19	SPARE	20	1								1	20	SPARE	20
21	SPARE	20	1								1	20	SPARE	22
23	SPARE	20	1								1	20	SPARE	24
25	SPARE	20	1								1	20	SPARE	26
27	SPARE	20	1								1	20	SPARE	28
29	SPARE	20	1								1	20	SPARE	30
TOTAL KVA CONNECTED							2.55	2.51	0.81				5.87	KVA

PANEL SCHEDULE
NTS



ONE-LINE DIAGRAM
NTS

Revisions	Date

Consultants:

BKI BURK-KLEINPETER, INC.
ENGINEERS, ARCHITECTS, PLANNERS, ENVIRONMENTAL SCIENTISTS
4176 CANAL STREET, NEW ORLEANS, LA 70119-5994
PHONE (504)486-5901 FAX (504)488-1714

Seal:

A/E:

ROYAL ENGINEERS & CONSULTANTS, LLC
4298 ELYSIAN FIELDS AVENUE
NEW ORLEANS, LOUISIANA 70122
www.royalengineering.net

Approved:

PROGRAM MANAGER, PROJECTS _____
SAFETY/INDUSTRIAL HYGIENE _____
HEALTH SYSTEM SPECIALIST _____
MAINTENANCE SUPERVISOR _____
MAINTENANCE FOREMAN _____
MAINTENANCE FOREMAN _____

Drawing Title

ONE-LINE DIAGRAM & PANEL SCHEDULE

Approved: Service Engineer _____
Approved: Service Director _____

Project Title

VA Gulf Coast Decontamination Unit

Building Number: XX
Checked: P.H.
Drawn: C.V.
Location: VAMC BILOXI, MS

Date: 07/16/2015
Project No.: 520-13-136
Drawing No.: **E400**
Dwg. of _____

FOR CONSTRUCTION

Office of Facilities
Department of Veterans Affairs