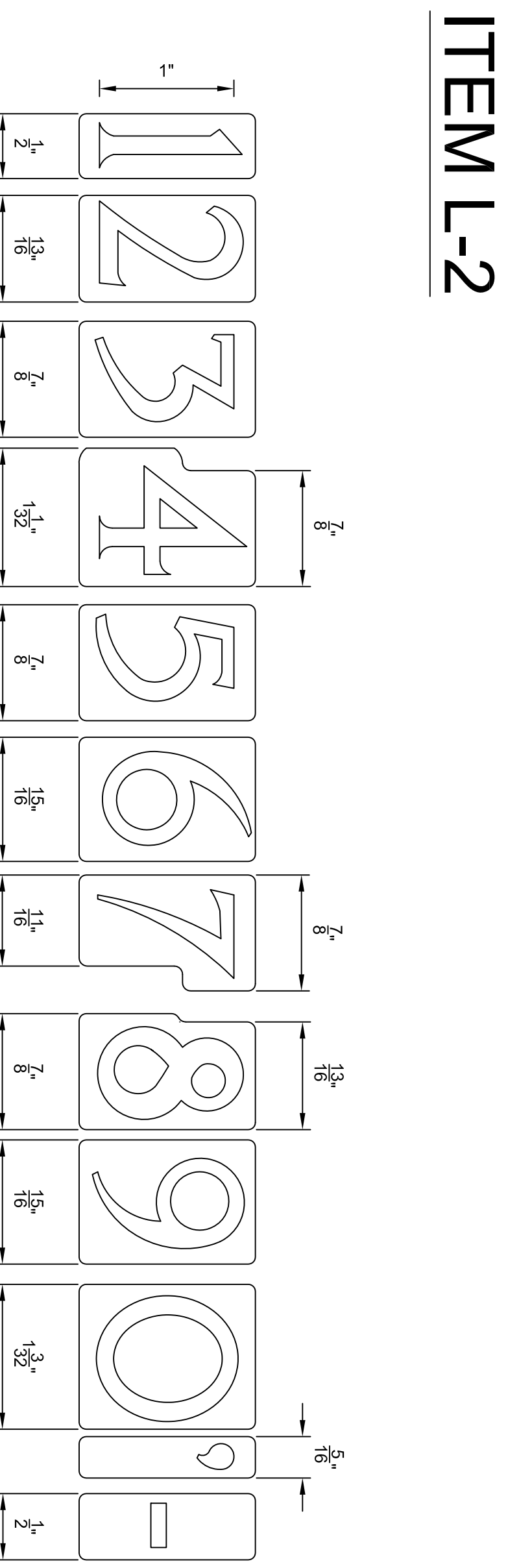
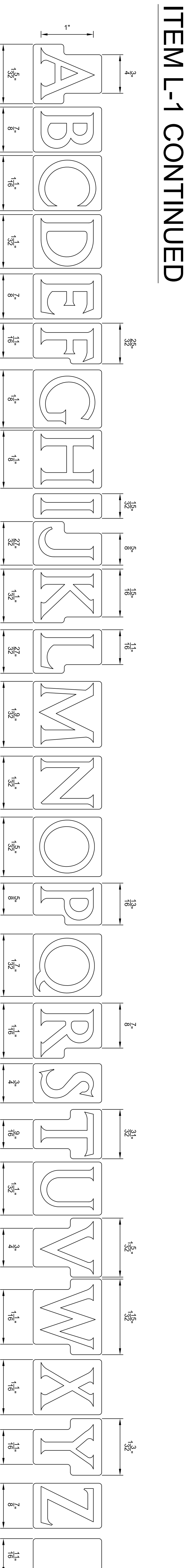
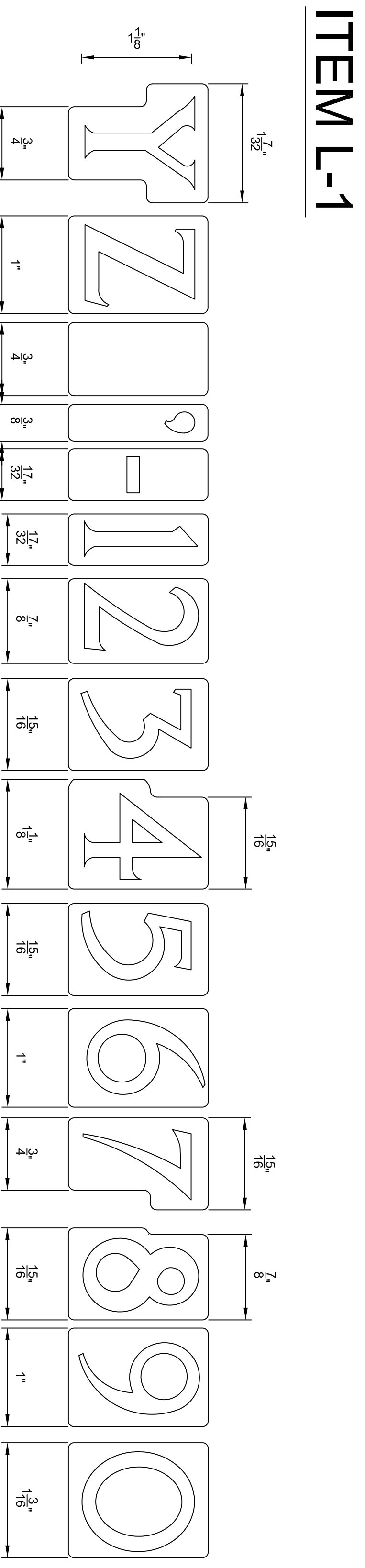
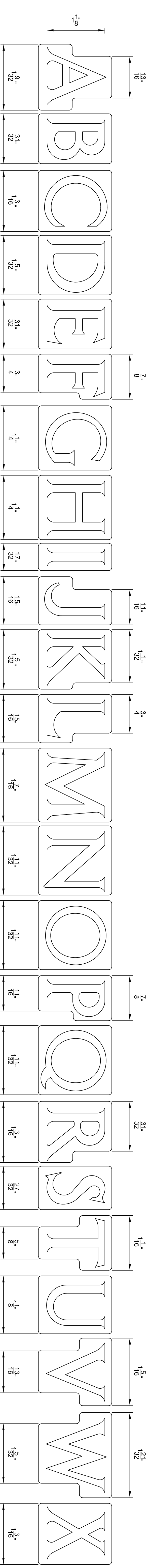
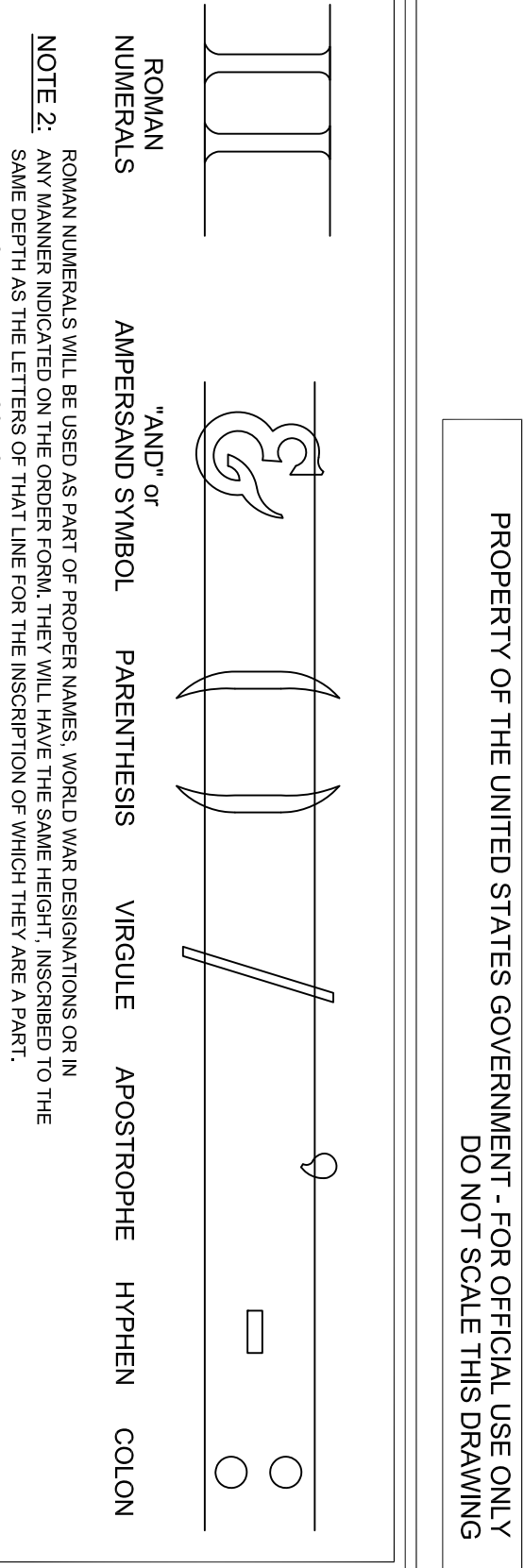
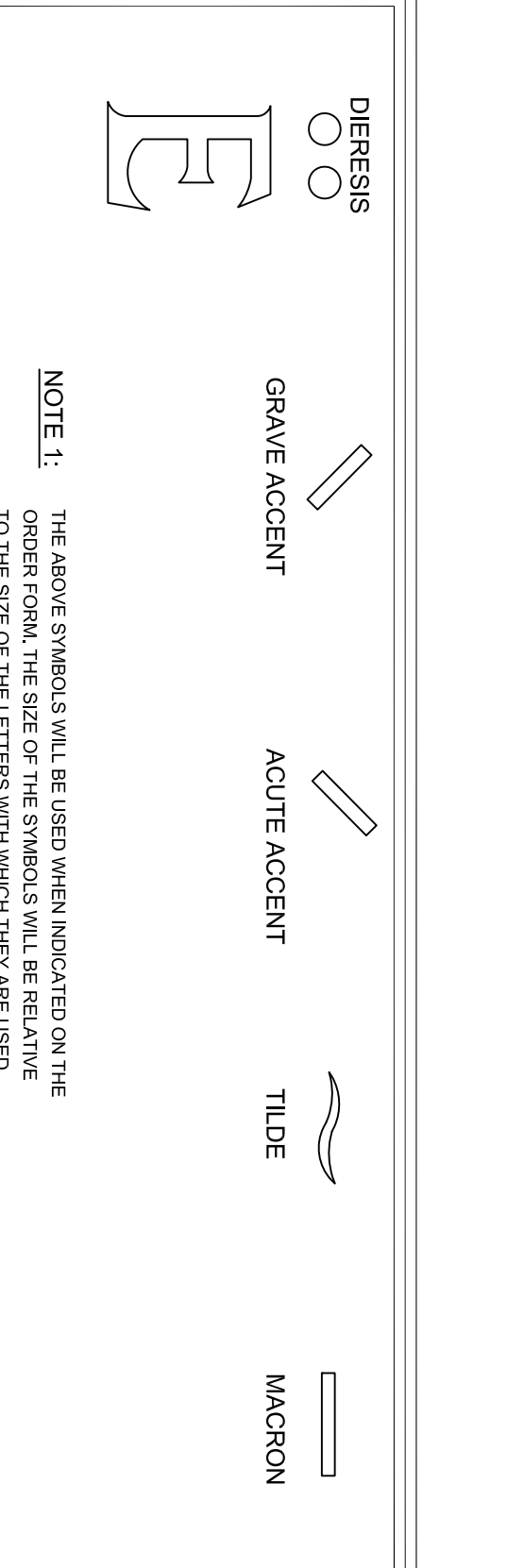
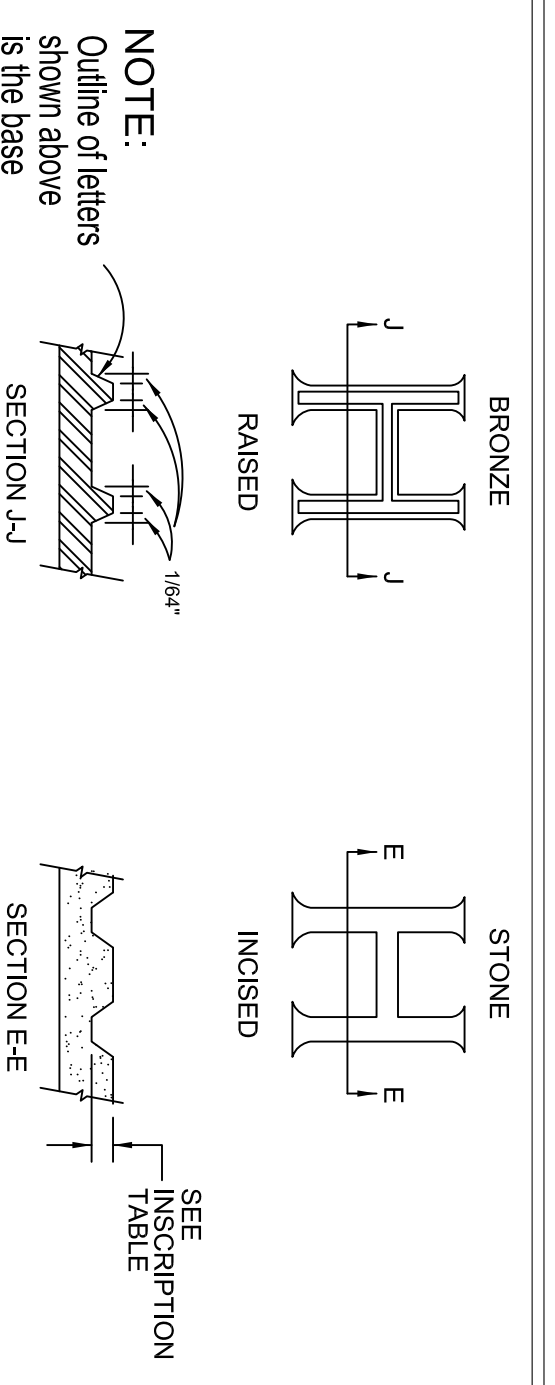


DRAWING LOCATION	ITEM NAME AND LETTER HEIGHT							EMBLEM	
	MARKER TYPE	L1	L2	L3	L4	L5	L6		L7
A&B1	BI	N/A	3/32"	N/A	3/32"	N/A	N/A	N/A	3/32"
A&F-1	F1	6/32" - 8/32"	N/A	4/32" - 6/32"	4/32" - 6/32"	N/A	N/A	N/A	6/32" - 8/32"
A&G1/1/1/1	G1/1/1/1	7/32" - 8/32"	N/A	6/32" - 7/32"	6/32" - 7/32"	N/A	N/A	N/A	7/32" - 8/32"
A&M-1/2	M1/2	5/32" - 7/32"	N/A	4/32" - 6/32"	4/32" - 6/32"	N/A	N/A	N/A	5/32" - 7/32"
A&N1/2	N1/2	6/32" - 8/32"	N/A	4/32" - 6/32"	4/32" - 6/32"	N/A	N/A	N/A	6/32" - 8/32"
A&U-1/2	U1	7/32" - 8/32"	N/A	6/32" - 7/32"	6/32" - 7/32"	N/A	N/A	N/A	7/32" - 8/32"
A&X&X&X&X	X&X&X&X	N/A	3/16" RAISED AND INSCRIBED	N/A	3/16" RAISED AND INSCRIBED	N/A	N/A	N/A	N/A
A&Z1	Z1	N/A	N/A	N/A	N/A	3/32"	3/32"	N/A	3/32"

NOTE: AS OF JUNE 13, 2016 THE DEPTHS SURROUNDED BY BOLD BORDERS SUPERSPEC DEPTHS WHICH WERE PREVIOUSLY SPECIFIED AND MUST BE FOLLOWED IN LIEU OF DEPTHS SHOWN IN DRAWINGS RELATED TO SPECIFIC MONUMENT TYPES.



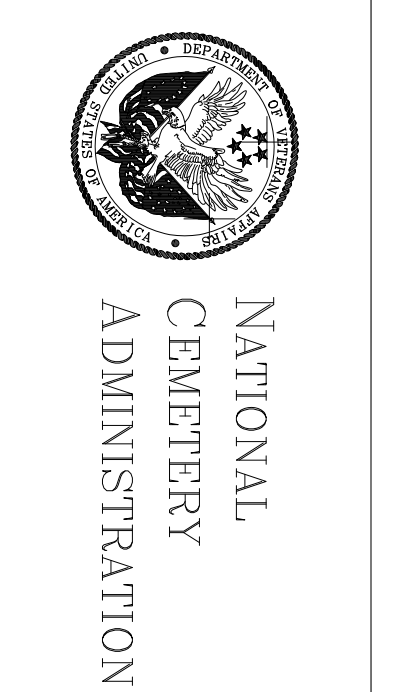
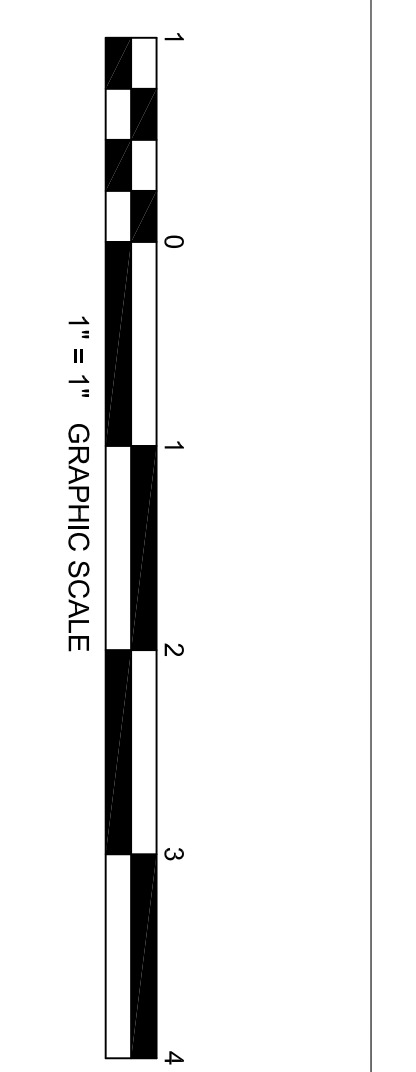
ITEM L-2 CONTINUED

SHOWN IN DRAWINGS RELATED TO SPECIFIC MONUMENT TYPES.

Revision	Description	Date
1	SUPERSEDES DRAWING DATED 12-2-98	06/05/03

GENERAL NOTES
 1. THE MINIMUM SIZE FOR ALL MARBLE AND GRANITE INSCRIPTIONS IS 4/32". ANY PART OF ANY INSCRIPTION NOT MEETING THE MINIMUM WILL BE SUBJECT TO REDUCTION.
 2. ALL CHARACTERS AND SYMBOLS SHALL BE IN ALL CAPS UNLESS OTHERWISE SPECIFIED.
 3. THE CENTER AREA OF LETTERS, NUMBERS, AND OTHER CHARACTERS TO PREVENT BLOWOUT.

GENERAL NOTES
 1. THE MINIMUM SIZE FOR ALL MARBLE AND GRANITE INSCRIPTIONS IS 4/32". ANY PART OF ANY INSCRIPTION NOT MEETING THE MINIMUM WILL BE SUBJECT TO REDUCTION.
 2. ALL CHARACTERS AND SYMBOLS SHALL BE IN ALL CAPS UNLESS OTHERWISE SPECIFIED.
 3. THE CENTER AREA OF LETTERS, NUMBERS, AND OTHER CHARACTERS TO PREVENT BLOWOUT.



<p>Approved: Director, Memorial Programs Service</p> <p>Approved: Chief of Operations, Memorial Programs Service</p>	<p>Approved: Director, Memorial Programs Service</p> <p>Approved: Chief of Operations, Memorial Programs Service</p>	<p>Approved: Director, Memorial Programs Service</p> <p>Approved: Chief of Operations, Memorial Programs Service</p>	<p>Approved: Director, Memorial Programs Service</p> <p>Approved: Chief of Operations, Memorial Programs Service</p>
--	--	--	--