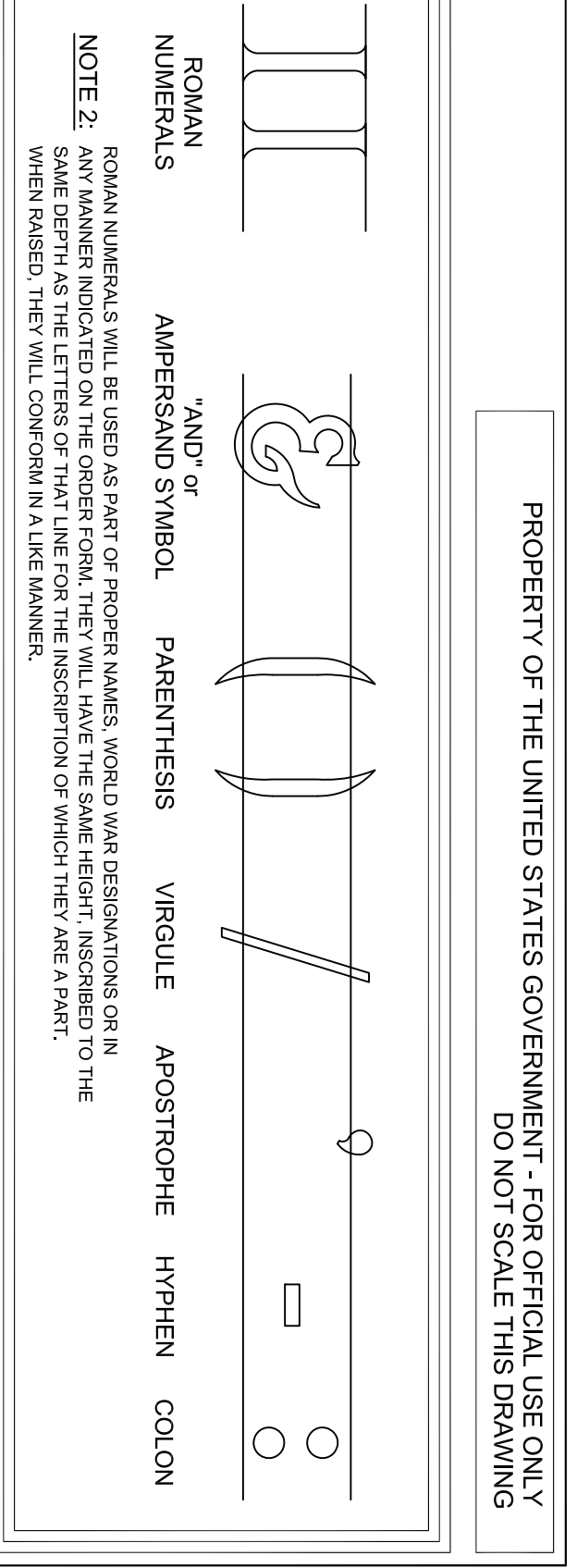
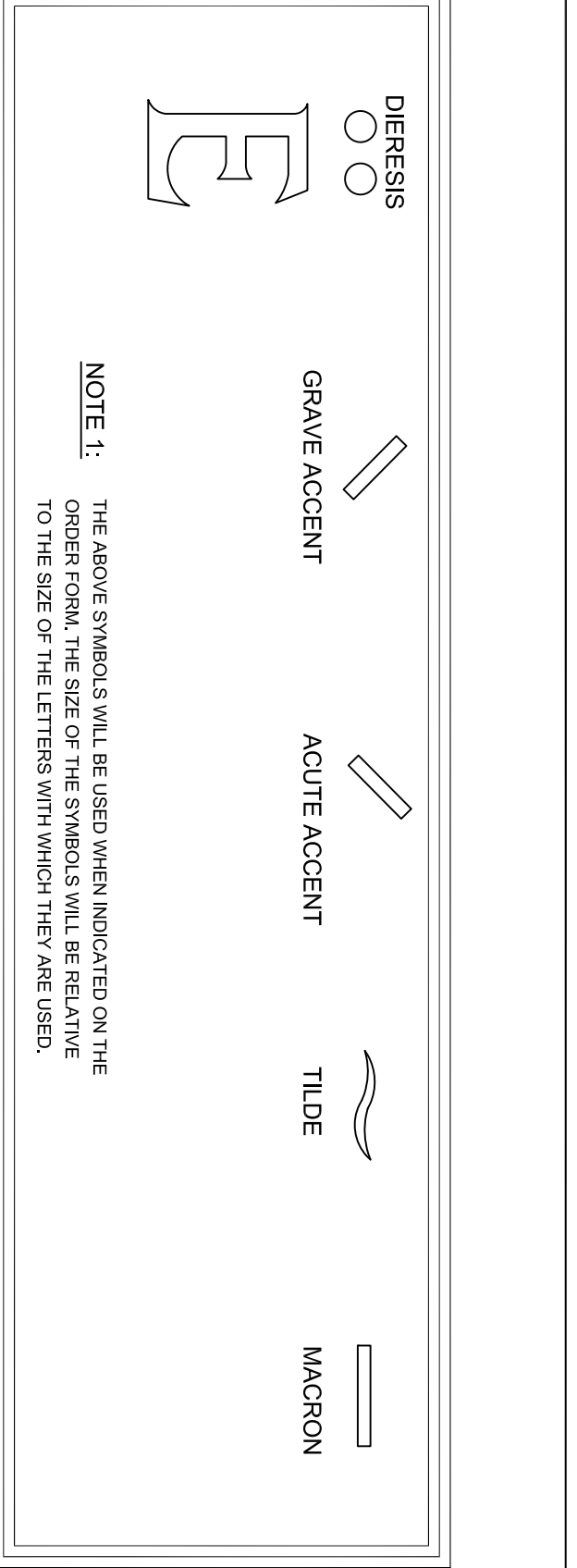
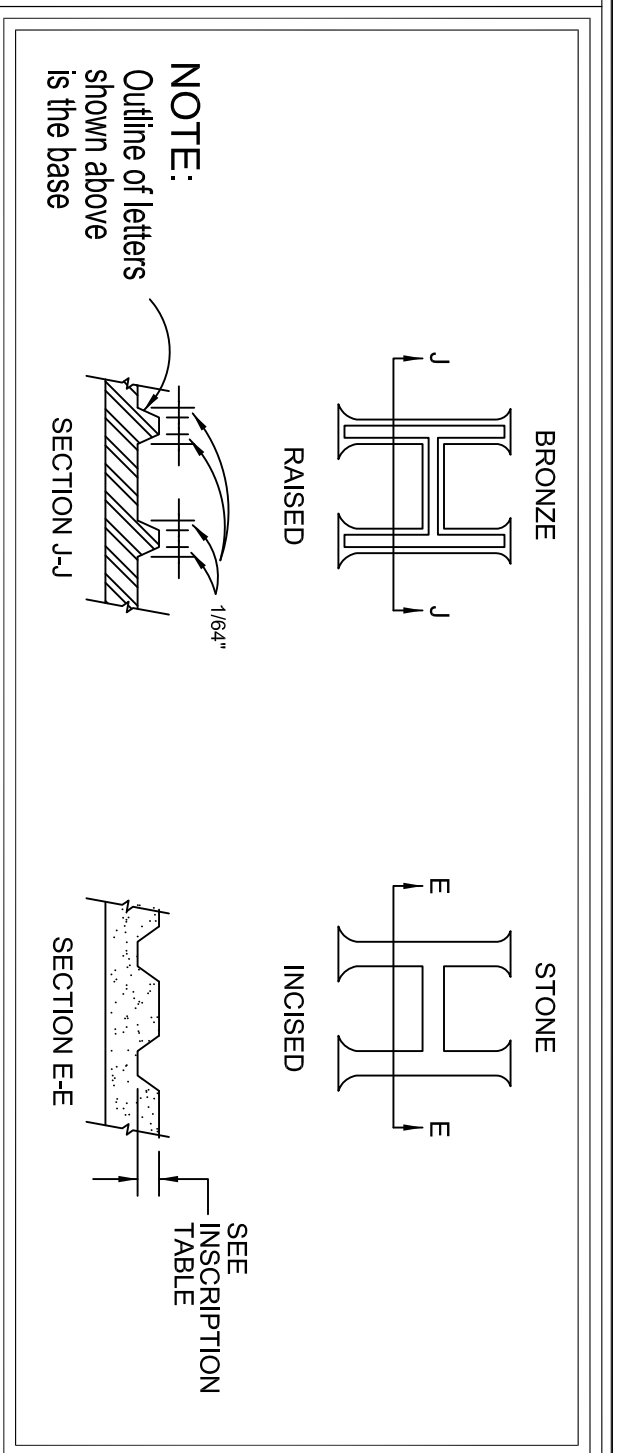


DRAWING LOCATION	ITEM NAME AND LETTER HEIGHT							EMBLEM
	TYPE	L1	L2	L3	L4	L5	L6	
MARKER	1.18"	1"	7/8"	3/4"	7/16"	3/8"	5/8"	2" OR 3"
DEPTH BY MARKER TYPE								
A&B1	B1	N/A	3/32"	N/A	N/A	N/A	N/A	3/32"
A&B1	F1	6/32" - 8/32"	N/A	4/32" - 6/32"	4/32" - 6/32"	N/A	N/A	6/32" - 8/32"
A&B1/1/1	G1/J1/L1	7/32" - 8/32"	N/A	6/32" - 7/32"	6/32" - 7/32"	N/A	N/A	7/32" - 8/32"
A&A&M1/2/3	A/C1	N/A	N/A	6/32" - 7/32"	N/A	4/32" - 5/32"	N/A	4/32" - 5/32"
A&M1/2	E/H/I/H1	5/32" - 7/32"	N/A	4/32" - 6/32"	4/32" - 6/32"	N/A	N/A	5/32" - 7/32"
A&M1/2	U1	6/32" - 8/32"	N/A	4/32" - 6/32"	4/32" - 6/32"	N/A	N/A	6/32" - 8/32"
A&V1/W1	V1/W1	7/32" - 8/32"	N/A	6/32" - 7/32"	6/32" - 7/32"	N/A	N/A	7/32" - 8/32"
A&A&M&B&C	X&A&M&B&C	N/A	3/16" RAISED AND INSCRIBED	N/A	N/A	N/A	N/A	N/A
A&V1	Y1	N/A	3/16" RAISED AND INSCRIBED	N/A	N/A	N/A	N/A	N/A
A&Z1	Z1	N/A	N/A	N/A	3/32"	3/32"	N/A	3/32"

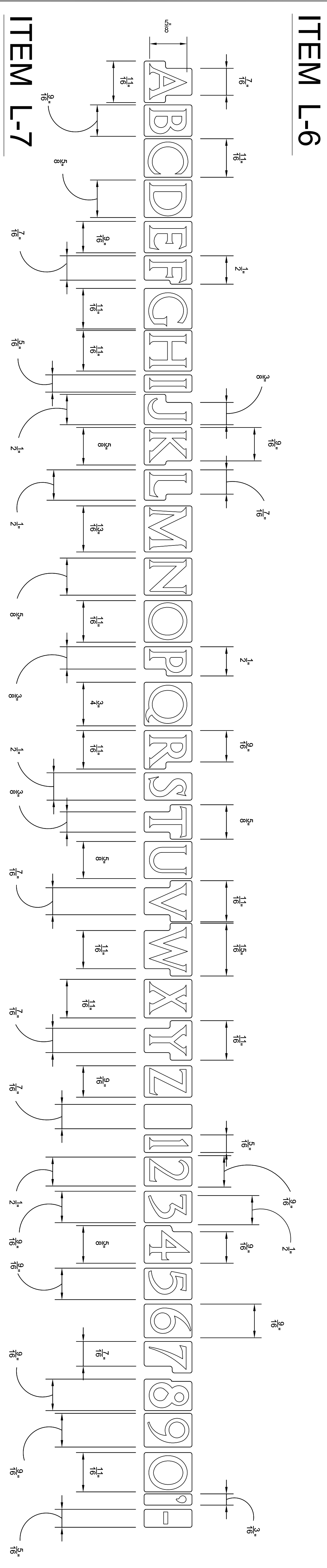
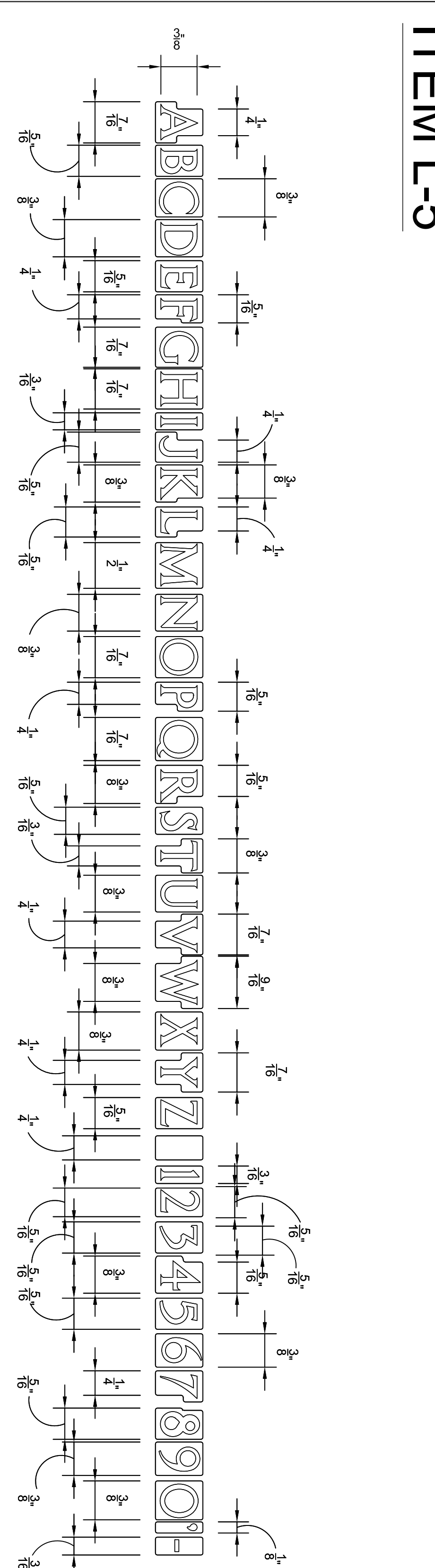
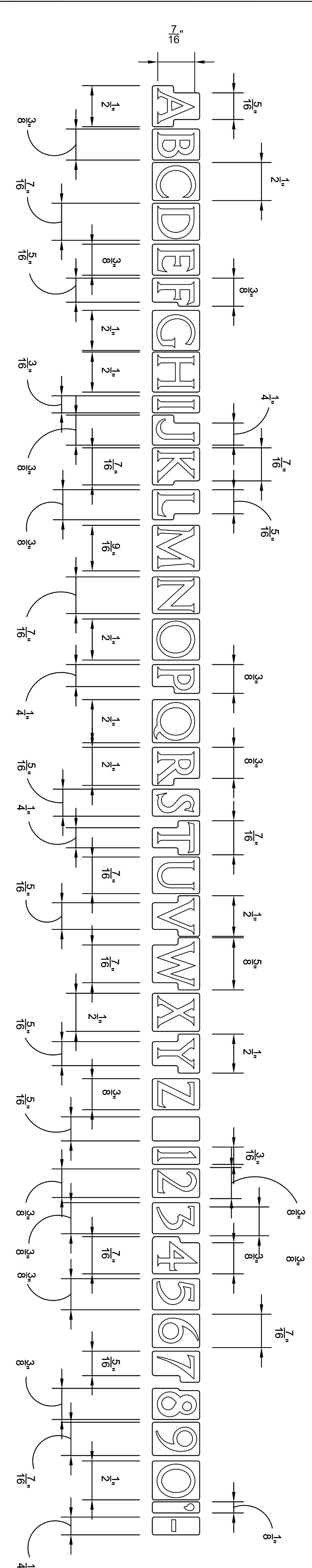
NOTE: AS OF JUNE 13, 2016 THE DEPTHS SURROUNDED BY BOLD BORDERS SUPERSPACE DEPTHS WHICH WERE PREVIOUSLY SPECIFIED AND MUST BE FOLLOWED IN LIEU OF DEPTHS SHOWN IN DRAWINGS RELATED TO SPECIFIC MONUMENT TYPES.



CROSS SECTION DETAIL

ACCENT MARKS

OTHER CHARACTERS



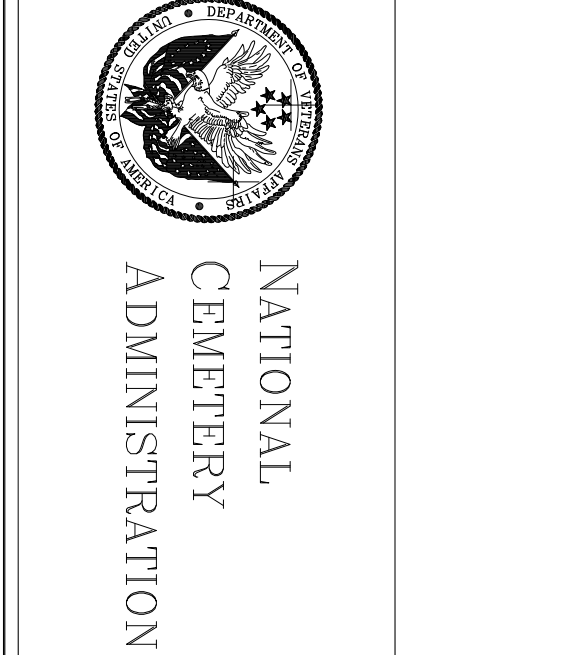
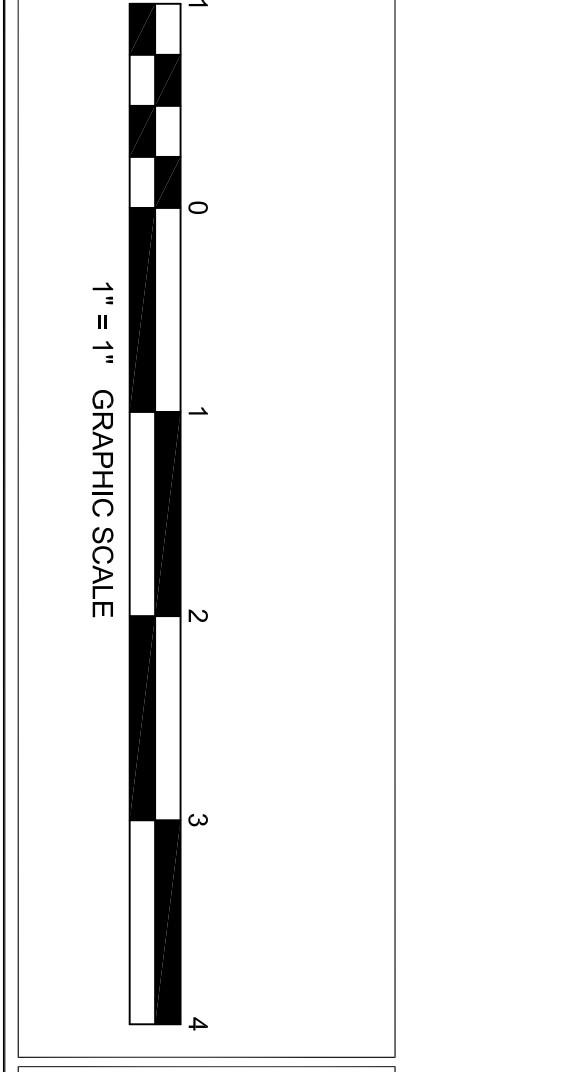
Revisions	Date	Description
1	06/05/03	SUPERSEDES DRAWING D-4 DATED 12-2-99
2	03/01/07	MOVED INSCRIBED DETAILS TO SHFT 2, DELETED CHARACTER MARKERS
3	11/28/13	INScribed TABLE AND SHFT 2 & 3
4	11/28/13	ADDED U.S.A. & A.I.T. FONTS, UPDATED INSCRIPTION TABLE
5	06/13/16	CHARACTER MARKERS, BOLD INSCRIPTIONS, ROLL IN DEPTH BY TYPE TABLE

GENERAL NOTES

- THE MINIMUM SIZE FOR ALL MARBLE AND GRANITE INSCRIPTIONS IS 4/32". ANY PART OF ANY INSCRIPTION NOT MEETING THE MINIMUM WILL BE SUBJECT TO REDUCTION.
- ALL LETTERS AND NUMERALS SHALL BE CAPITAL LETTERS UNLESS OTHERWISE SPECIFIED.
- ALL LETTERS AND NUMERALS SHALL BE IN THE CENTER OF THE CENTER AREA OF THE LETTERS AND NUMERALS.
- ALL LETTERS AND NUMERALS SHALL BE IN THE CENTER OF THE CENTER AREA OF THE LETTERS AND NUMERALS.
- ALL LETTERS AND NUMERALS SHALL BE IN THE CENTER OF THE CENTER AREA OF THE LETTERS AND NUMERALS.

GENERAL NOTES

- THE MINIMUM SIZE FOR ALL MARBLE AND GRANITE INSCRIPTIONS IS 4/32". ANY PART OF ANY INSCRIPTION NOT MEETING THE MINIMUM WILL BE SUBJECT TO REDUCTION.
- ALL LETTERS AND NUMERALS SHALL BE CAPITAL LETTERS UNLESS OTHERWISE SPECIFIED.
- ALL LETTERS AND NUMERALS SHALL BE IN THE CENTER OF THE CENTER AREA OF THE LETTERS AND NUMERALS.
- ALL LETTERS AND NUMERALS SHALL BE IN THE CENTER OF THE CENTER AREA OF THE LETTERS AND NUMERALS.
- ALL LETTERS AND NUMERALS SHALL BE IN THE CENTER OF THE CENTER AREA OF THE LETTERS AND NUMERALS.



<p>Approved: Director, Memorial Programs Service</p> <p>Approved: Chief of Operations, Memorial Programs Service</p>	<p>Project Title: GOVERNMENT HEADSTONES, MARKERS, AND NICHE COVERS</p> <p>Location: A-LFN&OC-3 DWG 24" X 36" SHEET</p>	<p>Date: JUNE 13, 2016</p> <p>Project No:</p>
<p>Approved: Director, Memorial Programs Service</p> <p>Approved: Chief of Operations, Memorial Programs Service</p>	<p>Project Title: LETTERS, FONTS, NUMBERS & OTHER CHARACTERS</p> <p>Location: A-LFN&OC-3 DWG 24" X 36" SHEET</p>	<p>Date: JUNE 13, 2016</p> <p>Project No:</p>
<p>Approved: Director, Memorial Programs Service</p> <p>Approved: Chief of Operations, Memorial Programs Service</p>	<p>Project Title: GOVERNMENT HEADSTONES, MARKERS, AND NICHE COVERS</p> <p>Location: A-LFN&OC-3 DWG 24" X 36" SHEET</p>	<p>Date: JUNE 13, 2016</p> <p>Project No:</p>
<p>Approved: Director, Memorial Programs Service</p> <p>Approved: Chief of Operations, Memorial Programs Service</p>	<p>Project Title: LETTERS, FONTS, NUMBERS & OTHER CHARACTERS</p> <p>Location: A-LFN&OC-3 DWG 24" X 36" SHEET</p>	<p>Date: JUNE 13, 2016</p> <p>Project No:</p>