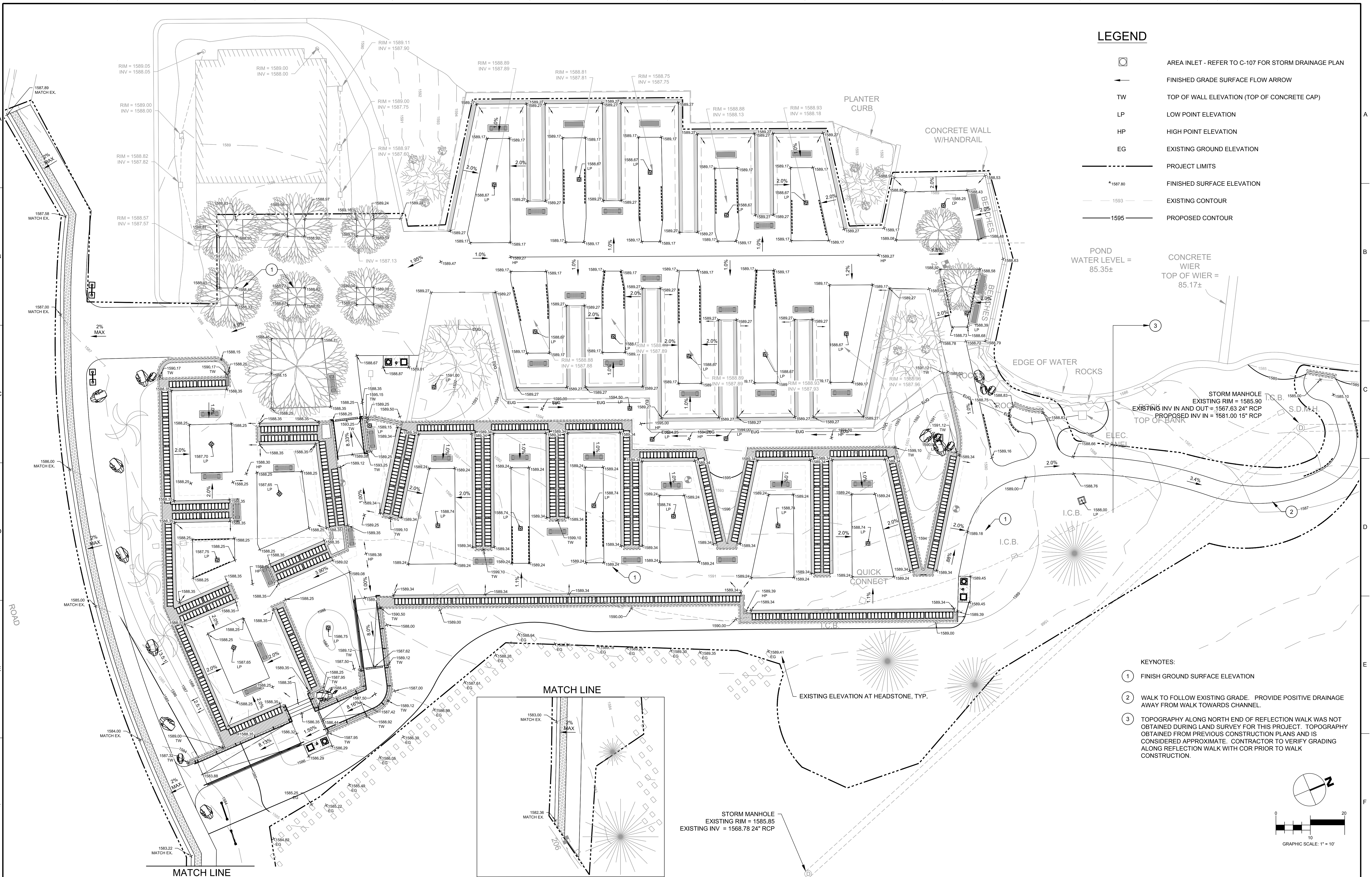


three inches = one foot
one and one half inches = one foot
one inch = one foot
three quarters inch = one foot
one half inch = one foot
three eighths inch = one foot
one quarter inch = one foot
one eighth inch = one foot



LEGEND

	AREA INLET - REFER TO C-107 FOR STORM DRAINAGE PLAN
	FINISHED GRADE SURFACE FLOW ARROW
	TOP OF WALL ELEVATION (TOP OF CONCRETE CAP)
	LOW POINT ELEVATION
	HIGH POINT ELEVATION
	EXISTING GROUND ELEVATION
	PROJECT LIMITS
	FINISHED SURFACE ELEVATION
	EXISTING CONTOUR
	PROPOSED CONTOUR

POND WATER LEVEL = 85.35±

CONCRETE WIER
TOP OF WIER = 85.17±

EDGE OF WATER
ROCKS

STORM MANHOLE
EXISTING RIM = 1585.90
EXISTING INV IN AND OUT = 1567.63 24" RCP
PROPOSED INV IN = 1581.00 15" RCP

I.C.B.

ELEC. PANEL

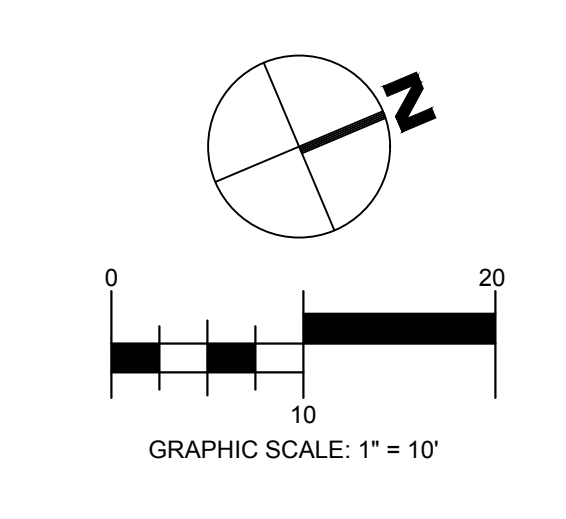
QUICK CONNECT

CONCRETE WALL W/HANDRAIL

PLANTER CURB

BENCHES

- KEYNOTES:**
- ① FINISH GROUND SURFACE ELEVATION
 - ② WALK TO FOLLOW EXISTING GRADE. PROVIDE POSITIVE DRAINAGE AWAY FROM WALK TOWARDS CHANNEL.
 - ③ TOPOGRAPHY ALONG NORTH END OF REFLECTION WALK WAS NOT OBTAINED DURING LAND SURVEY FOR THIS PROJECT. TOPOGRAPHY OBTAINED FROM PREVIOUS CONSTRUCTION PLANS AND IS CONSIDERED APPROXIMATE. CONTRACTOR TO VERIFY GRADING ALONG REFLECTION WALK WITH COR PRIOR TO WALK CONSTRUCTION.



Revisions:

No.	Description	Date

CONSULTANTS:

ARCHITECT/ENGINEERS:

FOURFRONT DESIGN INC.

517 7th street
rapid city sd 57701
p 605.342.9470
f 605.342.2377
www.4front.biz

Drawing Title
GRADING PLAN

Approved: Project Director

Project Title
Expand Columbarium A

Location
Riverside National Cemetery,
22495 Van Buren Blvd, Riverside CA 92518

Date
May 26, 2016

Checked
CZ

Drawn
CZ/JM

Drawing Number
C-105

Dwg. 8 of 47

NCA DESIGN AND CONSTRUCTION SERVICE

Department of Veterans Affairs