

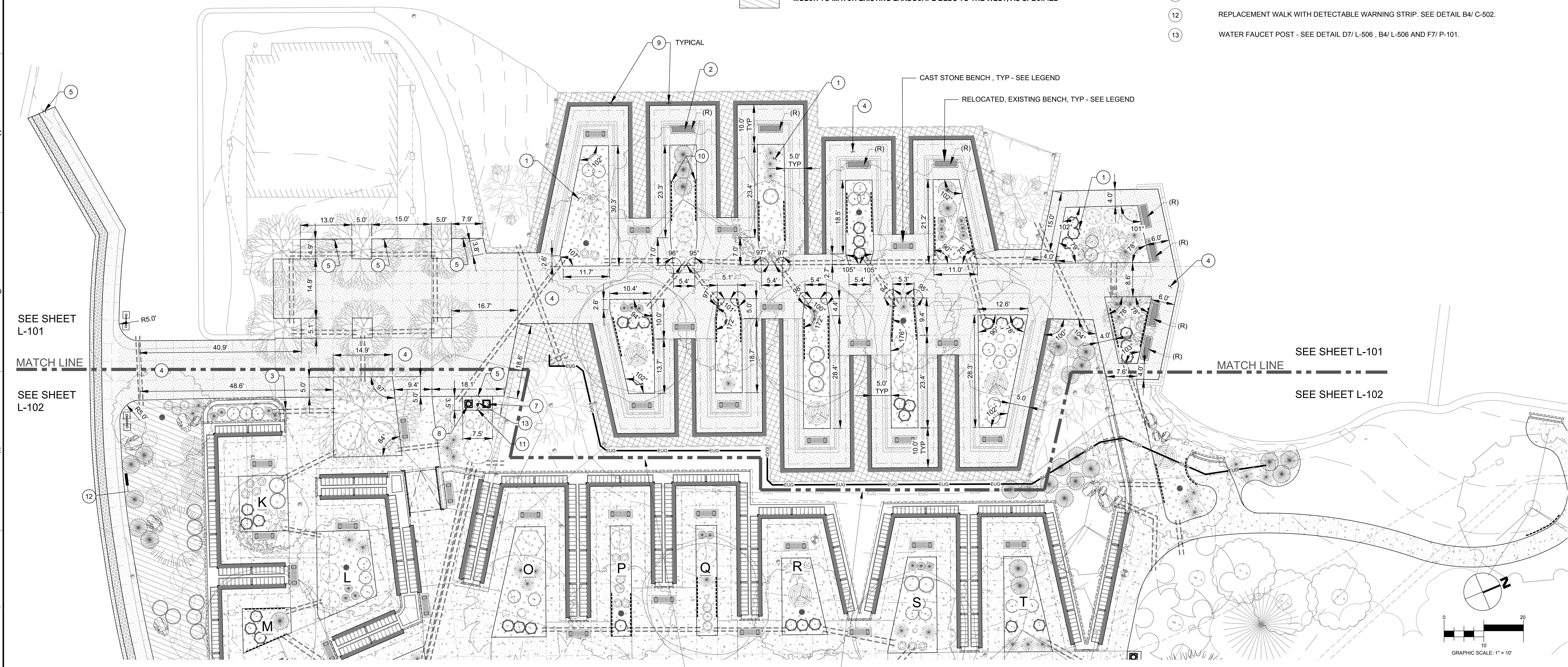
three inches = one foot
 one and one half inches = one foot
 one inch = one foot
 three quarters inch = one foot
 one half inch = one foot
 three eighths inch = one foot
 one quarter inch = one foot
 three eighths inch = one foot
 one quarter inch = one foot
 one eighth inch = one foot
 one eighth inch = one foot

LEGEND

- NEW CONCRETE WALK: INTEGRAL, COLORED, LIGHT BROWN / BRUSH SANDBLAST FINISH, AS SPECIFIED. MATCH EXISTING CONCRETE COLOR AT EXISTING COLUMBARIUM A.
- REPLACEMENT CONCRETE WALK: INTEGRAL, COLORED, LIGHT BROWN / BRUSH SANDBLAST FINISH, AS SPECIFIED, TYP. PER DETAIL D5/C-502. (OVER EXCAVATE AS NEEDED.) MATCH EXISTING CONCRETE COLOR AT EXISTING COLUMBARIUM A.
- COBBLE MULCH, AS SPECIFIED
- DECORATIVE GRAVEL STRIP: ROUNDED, WASHED RIVER PEBBLES, 3/8" DIA. "MOHAVE MIX" AS SUPPLIED BY KRC ROCK, SAN MARCOS, CA, OR APPROVED EQUAL
- DETECTABLE WARNING PAVERS: SEE DETAIL B4/ C-502
- EXISTING COLUMBARIUM UNIT OR WALL
- (R) SALVAGED, PROTECTED AND RELOCATED EXISTING BENCH - SEE LEGEND ON C-102 AND F7/ L-506 FOR REPLACEMENT
- CAST STONE BENCH - SEE DETAIL F7/ L-506
- MULCH TO MATCH EXISTING LANDSCAPE BEDS TO THE WEST, AS SPECIFIED

KEYNOTES

- PLANTING AREA, TYP. IN COBBLE MULCH BED. SEE DETAIL C1/L-506.
- CAST STONE BENCH, TYP. SEE DETAIL F7/ L-506. (REPLACE DAMAGED WITH NEW.)
- CORE DRILL THROUGH WALL: 12" BELOW GRADE - SEE IRRIGATION PLANS.
- REPLACEMENT CONCRETE WALK: INTEGRAL, COLORED, AS SPECIFIED, TYP. PER DETAIL D5/C-502. (OVER EXCAVATE AS NEEDED.) REFER TO SHEET C-104 FOR JOINTING LAYOUT.
- TIE-IN TO EXISTING WALK AND/OR NEW IMPROVEMENT. SEE DETAIL E8/ C-502 FOR TIE BAR CONNECTION.
- NOT USED
- TRASH CONTAINER - SEE CAST STONE TRASH CONTAINER DETAIL F2/L-506.
- FLORAL VASE RECEPTACLE - SEE CAST STONE FLORAL VASE RECEPTACLE DETAIL D2/ L-506.
- DECORATIVE GRAVEL STRIP: ROUNDED, WASHED RIVER PEBBLES, 3/8" DIA. "MOHAVE MIX" AS SUPPLIED BY KRC ROCK, SAN MARCOS, CA, OR APPROVED EQUAL.
- LINEAR ROOT BARRIER INSTALLED WHERE TREE TRUNKS ARE LESS THAN 5' FROM EDGE OF PAVEMENT, TYP. SEE DETAIL F1/ L-507.
- FLORAL WATERING STATION. SEE DETAIL D7/ L-506.
- REPLACEMENT WALK WITH DETECTABLE WARNING STRIP. SEE DETAIL B4/ C-502.
- WATER FAUCET POST - SEE DETAIL D7/ L-506, B4/ L-506 AND F7/ P-101.



<p>Revisions:</p> <table border="1"> <tr> <th>No.</th> <th>Description</th> <th>Date</th> </tr> <tr> <td> </td> <td> </td> <td> </td> </tr> </table>	No.	Description	Date				<p>CONSULTANTS:</p>		<p>ARCHITECT/ENGINEERS:</p> <p>FOURFRONT DESIGN INC. 517 7th street rapid city sd 57701 p 605.342.9470 f 605.342.2377 www.4front.biz</p>	<p>Drawing Title SITE LAYOUT PLAN: EXISTING COLUMBARIUM A RENOVATION</p> <p>Approved: Project Director</p>	<p>Project Title Expand Columbarium A</p> <p>Location Riverside National Cemetery, 22495 Van Buren Blvd, Riverside CA 92518</p> <p>Date: May 26, 2016 Checked: EH Drawn: EH/JH/AW</p>	<p>Project Number 901CM3040</p> <p>Building Number</p> <p>Drawing Number L-101 Dwg. 14 of 47</p>	<p>NCA DESIGN AND CONSTRUCTION SERVICE</p> <p>Department of Veterans Affairs</p>
	No.	Description	Date										
<p>VA FORM 08-6231</p>													