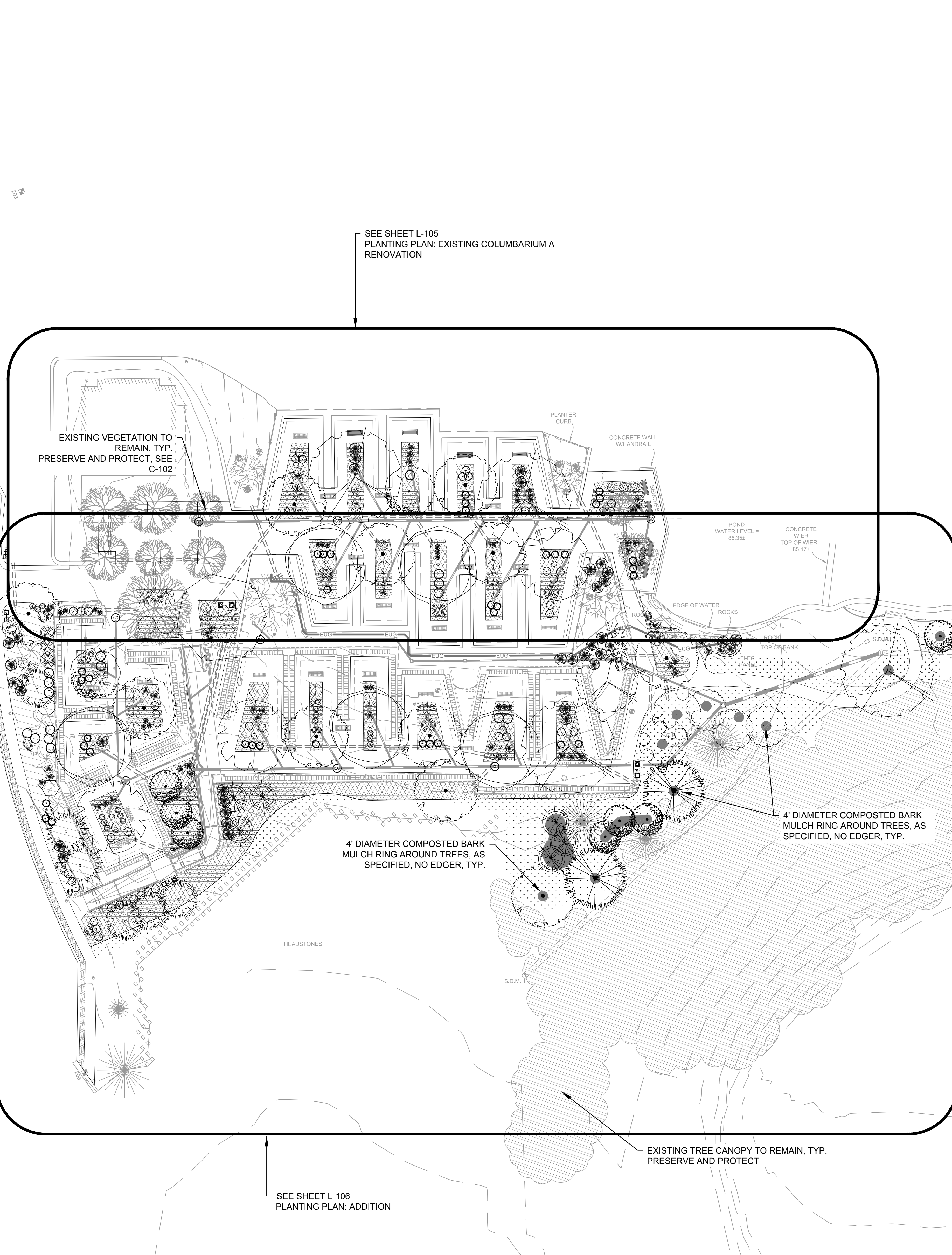


three inches = one foot
 one and one half inches = one foot
 one inch = one foot
 three quarters inch = one foot
 one half inch = one foot
 one quarter inch = one foot
 three eighths inch = one foot
 one eighth inch = one foot
 one quarter inch = one foot
 one eighth inch = one foot

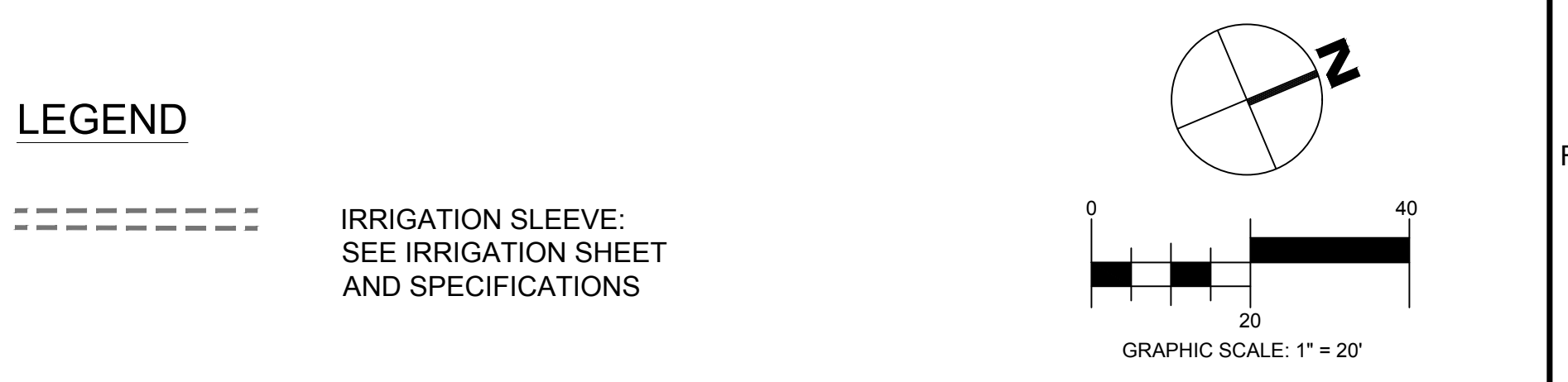


PLANTING SCHEDULE:

QTY.	SYMBOL	BOTANICAL NAME COMMON NAME	SIZE	TYPE	MATURE SIZE (HEIGHT X SPREAD)	DETAIL
-		EXISTING VEGETATION TO REMAIN, PRESERVE AND PROTECT, SEE D-101	VARIES	-	-	-
10		<i>PISTACIA CHINENSIS</i> CHINESE PISTACHE	48"	BOX	30' X 30'	C4/L-507
5		LACEBARK ELM <i>ULMUS PARVIFOLIA</i>	48"	BOX	40' X 25'	C4/L-507
1		<i>FRAXINUS VELUTINA</i> 'FAN-TEX' FAN-TEX ASH	48"	BOX	40' X 40'	C4/L-507
5		<i>KOELREUTERIA BIPINNATA</i> CHINESE FLAME TREE	36"	BOX	40' X 20'	C4/L-507
3		<i>BRACHYCHITON POPULNEUS</i> BOTTLE TREE	36"	BOX	40' X 30'	C4/L-507
2		<i>CHIONANTHUS RETUSUS</i> CHINESE FRINGE TREE	36"	BOX	20' X 25'	C4/L-507
2		<i>GEUERA PARVIFLORA</i> AUSTRALIAN WILLOW	24"	BOX	20' X 20'	C4/L-507
3		<i>CALLISTEMON VIMINALIS</i> WEEPING BOTTLEBRUSH	24"	BOX	20' X 20'	C4/L-507
6		<i>BRAHEA ARMATA</i> MEXICAN BLUE PALM	8' BTH	CNTR.	30' X 15'	F7/L-507
4		<i>WASHINGTONIA FILIFERA</i> CALIFORNIA FAN PALM	10' BTH	CNTR.	60' X 15'	F7/L-507
2		<i>BUTIA CAPITATA</i> PINDO PALM	8' BTH	CNTR.	30' X 20'	F7/L-507
6		<i>LAGERSTROEMIA INDICA</i> (MULTI-TRUNK) CRAPE MYRTLE	24"	BOX	20' X 15'	C4/L-507
2		<i>PINUS ELДАРICA</i> ELДАРICA PINE	24"	BOX	50' X 40'	C4/L-507

QTY.	SYMBOL	BOTANICAL NAME COMMON NAME	SIZE	TYPE	MATURE SIZE (HEIGHT X SPREAD)	DETAIL
4		<i>CALLIANDRA CALIFORNICA</i> RED FAIRY DUSTER	5 GAL.	CNTR.	6' X 6'	C7/L-507
2		<i>BUDDLEI DAVIDI</i> 'PETITE INDIGO' BUTTERFLY BUSH	5 GAL.	CNTR.	4' X 4'	C7/L-507
45		<i>SALVIA GRAHAMII</i> GRAHAM'S SAGE	5 GAL.	CNTR.	3' X 3'	C7/L-507
18		<i>GAILLARDIA ARISTATA</i> PURSH BLANKETFLOWER	5 GAL.	CNTR.	2' X 3'	C7/L-507
14		<i>VERBENA</i> 'HOMESTEAD PURPLE' TRAILING VERBENA	5 GAL.	CNTR.	1' X 2'	C7/L-507
16		<i>PITTIOSPORUM TOBIRA</i> 'DWARF VARIEGATA' DWARF VARIEGATED JAPANESE MOCK ORANGE	5 GAL.	CNTR.	3' X 3'	C7/L-507
24		<i>PENSTEMON PARRYI</i> PARRY'S PENSTEMON	5 GAL.	CNTR.	1' X 2'	C7/L-507
13		<i>HESPERALOE PARVIFLORA</i> RED YUCCA	5 GAL.	CNTR.	3' X 4'	C7/L-507
42		<i>PENNISETUM X ADVENA</i> 'RUBRUM' RED FEATHER GRASS	5 GAL.	CNTR.	4' X 3'	C7/L-507
18		<i>SALVIA DANCING DOLLS</i> AUTUMN SAGE 'DANCING DOLLS'	5 GAL.	CNTR.	2' X 3'	C7/L-507
37		<i>PHORMIUM TENAX</i> 'TINY TIGER' DWARF VARIEGATED NEW ZEALAND FLAX	5 GAL.	CNTR.	2' X 3'	C7/L-507
10		<i>LANTANA X 'NEW GOLD'</i> NEW GOLD LANTANA	5 GAL.	CNTR.	1' X 2'	C7/L-507
31		<i>ARCTOSTAPHYLOS 'EMERALD CARPET'</i> EMERALD CARPET MANZANITA	5 GAL.	CNTR.	1' X 4'	C7/L-507
8		<i>RHAPHOLEPIS INDICA</i> INDIA HAWTHORN 'SPRINGTIME'	5 GAL.	CNTR.	3' X 5'	C7/L-507
1,896 S.F.		MULCH TO MATCH EXISTING LANDSCAPE BEDS TO THE WEST, AS SPECIFIED				
8,922 S.F.		5" DEPTH ROUND LANDSCAPE COBBLE MULCH CLEANED, WASHED, TO MATCH MULCH AT EXISTING COLUMBARIUM C. BASE LAYER SHALL BE 1 1/2" - 3 1/2" DIA. TOP LAYER SHALL BE HAND PLACED DEPTH = 4" - 8" FLUSH WITH ADJACENT PAVING/ TURF. "SAN JOAQUIN TAN" AS SUPPLIED BY KRC ROCK, SAN MARCOS, CA, OR APPROVED EQUIVALENT TO MATCH COLUMBARIUM C. SEE NOTE #12, SEE DETAIL C1/ L-506				
		EXISTING TREE CANOPY, APPROXIMATE LIMITS				
6,003 S.F.		FESCUE TURF SOD, SEE SPECIFICATIONS				
11		LARGE BOULDER				
7		SMALL BOULDER				

- PLANTING NOTES:
- LANDSCAPE/IRRIGATION CONTRACTOR SHALL COORDINATE INSTALLATION OF ALL LANDSCAPE/IRRIGATION MATERIALS WITH GENERAL CONTRACTOR.
 - CONTRACTOR TO EVALUATE EXISTING SITE CONDITIONS AND REMEDY AS REQUIRED TO PROVIDE FOR HEALTHY PLANT GROWTH AND MITIGATE UNSIGHTLY CONDITIONS.
 - CONTRACTOR TO COORDINATE ALL CONSTRUCTION ACTIVITIES WITH OTHER TRADES.
 - ALL PLANT MATERIAL SHALL BE INSTALLED AS DETAILED, SEE SHEET L-506. IF NOT SHOWN, INSTALL ACCORDING TO CALIFORNIA ASSOCIATION OF NURSERIES AND GARDEN CENTERS.
 - CONTRACTOR SHALL VERIFY ALL PLANT QUANTITIES. THE ILLUSTRATED LOCATION SHALL DICTATE COUNT.
 - DURING INSTALLATION OF PLANT MATERIAL AND IRRIGATION, CONTRACTOR SHALL KEEP ALL WORK AREAS AND WALKING AND DRIVEWAY SURFACES CLEAN OF DEBRIS. PROTECT ALL PLANT AND IRRIGATION MATERIALS FROM DAMAGE DUE TO LANDSCAPE OPERATIONS OR ACTIVITIES BY OTHER CONTRACTORS AND TRADES. MAINTAIN PROTECTION DURING INSTALLATION AND MAINTENANCE PERIODS. TREAT, REPAIR OR REPLACE ANY DAMAGED PLANTINGS, MATERIALS OR IRRIGATION EQUIPMENT IMMEDIATELY.
 - IN THE EVENT OF ANY DISCREPANCIES, NOTIFY THE COR/RE IMMEDIATELY.
 - NO PLANT SUBSTITUTIONS WILL BE ALLOWED WITHOUT WRITTEN CONSENT FROM THE COR/RE.
 - COORDINATE INSTALLATION OF ALL PLANTINGS AND IRRIGATION WITH COR/RE.
 - FINAL APPROVAL OR REJECTION UPON DELIVERY OF TREES, SHRUBS, AND GROUNDCOVER BY COR/RE.
 - LANDSCAPE CONTRACTOR TO LOCATE AND PROTECT ALL EXISTING ELEMENTS AND UTILITIES DURING PLANTING/INSTALLATION.
 - ALL PLANTING BEDS WITH COBBLE MULCH SHALL HAVE SPECIFIED LANDSCAPE MEMBRANE. OVERLAP ENDS 12", TURN DOWN EDGES 8"
 - DO NOT PRUNE BRANCHES OF NEWLY PLANTED TREES. ALL PRUNING OF EXISTING TREES TO BE PERFORMED UNDER THE DIRECTION OF A CERTIFIED ARBORIST.
 - SEE LOCATION OF LINEAR ROOT BARRIERS ON SHEETS L-101 AND L-102, DETAIL F1/L-506. ALL ROOT BARRIERS TO BE LOCATED WHERE TREE TRUNKS ARE LESS THAN 5' AWAY FROM PAVING EDGE.
 - TREES TO MAINTAIN A MIN. OF 6' CLEAR-ZONE UNDERNEATH WHERE BRANCHES MAY INTERFERE WITH PEDESTRIANS.



CONSULTANTS:

ARCHITECT/ENGINEERS:

Revisions: _____ Date: _____			Drawing Title PLANTING PLAN	Project Title Expand Columbarium A	Project Number 901CM3040
			Approved: Project Director	Location Riverside National Cemetery, 22495 Van Buren Blvd, Riverside CA 92518	Building Number _____
			Date May 26, 2016	Checked EH	Drawing Number L-104
				Drawn EH/JH/AW	Dwg. 17 of 47

NCA DESIGN AND CONSTRUCTION SERVICE

Department of Veterans Affairs