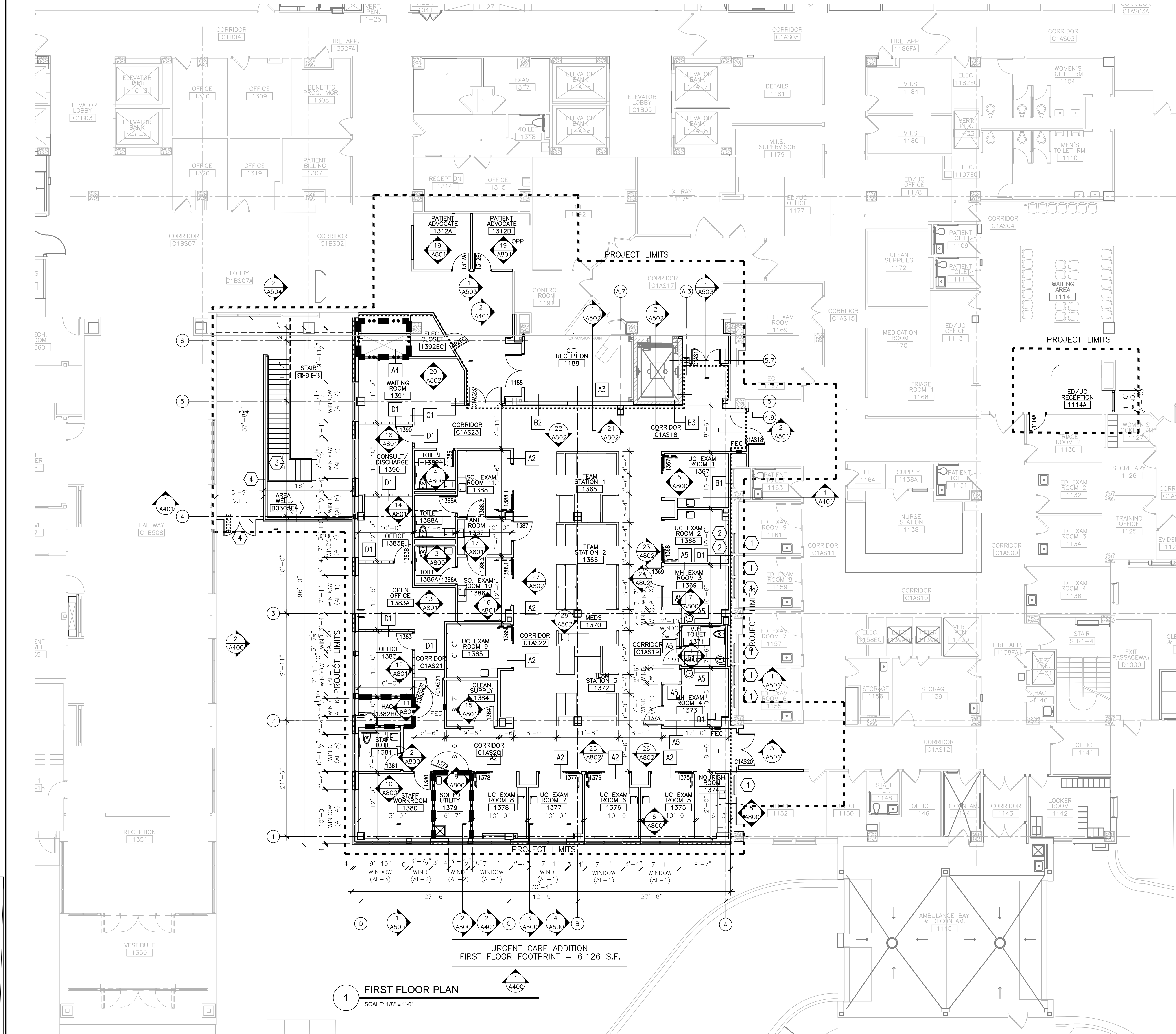


three inches = one foot  
one inch = one foot  
one half inch = one foot  
three quarters inch = one foot  
one half inch = one foot  
three eighths inch = one foot  
one eighth inch = one foot



1 FIRST FLOOR PLAN  
SCALE: 1/8" = 1'-0"

EXTERIOR WALL TYPES:

**EWB EXTERIOR CONCRETE FOUNDATION WALL:**  
(WALL THICKNESS = AS SHOWN ON STRUCTURAL DRAWINGS.)  
REINFORCED CAST-IN-PLACE CONCRETE FOUNDATION WALL WITH SHEET MEMBRANE WATERPROOFING. TERMINATE ALL MEMBRANE PERIMETER EDGES WITH ALUMINUM COMPRESSION BAR WITH CONTINUOUS SEALANT. PROVIDE 2" FOUNDATION DRAINAGE & INSULATION BOARD, EXTEND FULL HEIGHT VERTICALLY.  
SEE STRUCTURAL DRAWINGS FOR ADDITIONAL REINFORCING REQUIREMENTS.

**EW1 TYPICAL EXTERIOR BRICK VENEER/METAL FRAME WALL:**  
(SEE WALL SECTIONS A500)  
- 4" BRICK VENEER (BELDEN BRICK - SEAL BROWN VELOUR MODULAR BRICK)  
- AIR SPACE  
- 2" RIGID INSULATION  
- SPRAY APPLIED AIR & WATER BARRIER SYSTEM  
- 1/2" EXTERIOR SHEATHING  
- 6" METAL STUDS 16" O.C. WITH INSULATION  
- 5/8" GYPSUM BOARD ONE SIDE.  
PROVIDE CAVITY DRAINAGE MATERIAL, ST. STEEL THRU-WALL FLASHING, CAVITY WEEPS/VENTS 24" O.C., MASONRY EXPANSION JOINTS & CONTROL JOINTS. COMPARTMENTALIZE CAVITY & PRODUCE CAVITY WEEPS/VENTS AT TOP AND BOTTOM OF CAVITY TO INDUCE AIR FLOW.

WALL PARTITION TYPES:

- A1** 3 5/8" STEEL STUDS @ 16" OC WITH 3" SOUND ATTENUATION INSULATION & ONE LAYER 5/8" TYPE 'X' GYPSUM BOARD @ EACH FACE. PROVIDE 1 HR RATED UL #U465 DESIGN WHERE 1 HR WALL CONSTRUCTION IS INDICATED ON PLANS.
- A2** 6" STEEL STUDS @ 16" OC WITH 3" SOUND ATTENUATION INSULATION & ONE LAYER 5/8" TYPE 'X' GYPSUM BOARD @ EACH FACE. PROVIDE AT WALLS WITH 3-PANEL TELESCOPING DOORS.
- A3** 6" STEEL STUDS W/ 1-1/2" FURRING CHANNELS @ 16" OC WITH 3" SOUND ATTENUATION INSULATION & ONE LAYER 5/8" TYPE 'X' GYPSUM BOARD @ EACH FACE TO MATCH WIDTH OF ADJACENT WALL.
- A4** 1" GYPSUM LINER PANELS ON 2 1/2" 'C'-T STEEL STUDS @ 16" O.C. WITH ONE LAYER 5/8" TYPE 'X' GYPSUM BOARD ONE SIDE. PROVIDE 1 HR RATED UL #U417 DESIGN WHERE 1 HR WALL CONSTRUCTION IS INDICATED ON PLANS.
- A5** 3 5/8" STEEL STUDS @ 16" OC WITH 3" SOUND ATTENUATION INSULATION & TWO LAYERS 5/8" TYPE 'X' HIGH IMPACT ABUSE RESISTANT GYPSUM BOARD @ EACH SIDE OF PARTITION FACING AMENTAL HEALTH EXAM ROOMS OR MENTAL HEALTH TOILET ROOM. PROVIDE ONE LAYER 5/8" TYPE 'X' GYPSUM BOARD WHERE NOT FACING A MENTAL HEALTH ROOM.
- B1** 3 5/8" STEEL STUDS @ 16" OC WITH 3" SOUND ATTENUATION INSULATION & ONE LAYER 5/8" TYPE 'X' GYPSUM BOARD ONE SIDE.
- B2** 1-1/2" FURRING CHANNELS OVER EXISTING 6" METAL STUDS WITH 5/8" TYPE 'X' GYPSUM BOARD ONE SIDE.
- B3** 7/8" FURRING CHANNELS OVER EXISTING MASONRY WALL WITH 5/8" TYPE 'X' GYPSUM BOARD ONE SIDE.
- C1** PARTIAL HEIGHT PARTITION. 3-5/8" STEEL STUDS 16" O.C. W/ 5/8" TYPE 'X' GYP. BOARD BOTH SIDES WITH SOLID SURFACE CAP. TOP OF PARTITION = 48" A.F.F.
- D1** MOVEABLE PARTITION SYSTEM - BY MOVEABLE PARTITION SYSTEM CONTRACTOR. SEE BID DEDUCT #1.

FLOOR PLAN KEY NOTES:

- 1 PROVIDE 2" DEEP PREFABRICATED LIGHT BOXES AT EXISTING WINDOWS IN ED EXAM ROOMS. SIZE TO MATCH EXISTING WINDOW OPENINGS. ATTACH LIGHT BOX DIRECTLY TO EXISTING WINDOW FRAME. SEE DETAIL 11/A804.
- 2 PROVIDE 36"W X 24"H X 2" DEEP SURFACE MOUNTED PREFABRICATED LIGHT BOXES AT URGENT CARE EXAM ROOMS, WITH BLOCKING. SEE DETAIL 11/A804. BID DEDUCT: ELIMINATE LIGHT BOXES.
- 3 PROVIDE NEW EXTERIOR METAL STAIR, HANDRAILS AND GUARDRAILS W/ GRATED TREADS AND OPEN RISERS
- 4 PROVIDE NEW EXTERIOR METAL FENCE & GUARDRAIL AT PERIMETER OF AREA WELL. PROVIDE NEW METAL GATE TO BE LOCKED FROM THE EXTERIOR & ALLOWING FREE EGRESS FROM THE INTERIOR

GENERAL PLAN NOTES:

- CONTRACTOR TO FIELD VERIFY ALL EXISTING CONDITIONS, INCLUDING ALL EXISTING FLOOR-TO-FLOOR HEIGHTS, EXISTING FLOOR/WALL CONSTRUCTION, & ALL EXISTING DIMENSIONS, PRIOR TO THE START OF WORK.
- SEE SPECIFICATIONS FOR MATERIALS SPECIFICATIONS & REQUIREMENTS.
- SEE SHEET G103 FOR PROJECT PHASING DRAWINGS & NOTES.
- MAINTAIN CONTINUOUS UTILITY SERVICE TO ALL SPACES IN THE BUILDING NOT AFFECTED BY THIS WORK. COORDINATE WITH OWNER ANY DISRUPTION IN SERVICES REQUIRED TO PERFORM WORK OR TO MODIFY EXISTING PIPING, DUCTWORK OR ANY ASSOCIATED EQUIPMENT.
- CONSTRUCT A DUST-PROOF PARTITION TO SEPARATE AREAS OF CONSTRUCTION FROM ADJACENT OCCUPIED AREAS OUTSIDE SCOPE OF CONSTRUCTION.
- ALL NEW WALLS ARE DIMENSIONED FINISHED FACE-OF-WALL TO FINISHED FACE-OF-WALL.
- ALL NEW WALLS TO EXTEND TO UNDERSIDE OF FLOOR OR ROOF STRUCTURE UNLESS NOTED OTHERWISE.
- ALL NEW INTERIOR WALLS TO BE TYPE 'A1' UNLESS NOTED OTHERWISE. SEE PARTITION TYPES.
- ALL EXISTING EXTERIOR WALLS TO BE FURRED OUT W/ TYPE 'A2' WALL CONSTRUCTION UNLESS NOTED OTHERWISE. SEE PARTITION TYPES.
- PROVIDE WOOD BLOCKING AS REQUIRED FOR ALL FURNISHINGS & EQUIPMENT.
- SEE SHEET A400 FOR NEW EXTERIOR ELEVATIONS.
- SEE SHEETS A500 THRU A506 FOR NEW EXTERIOR WALL SECTIONS & DETAILS.
- SEE SHEET A301 FOR REFLECTED CEILING PLAN.
- SEE SHEET A810 FOR NEW DOOR SCHEDULE, NEW DOOR & FRAME TYPES, & WINDOW ELEVATIONS.
- PROVIDE CONTINUOUS CAULK JOINT AROUND ALL NEW DOOR & WINDOW OPENINGS, AT ALL NEW & EXISTING MEP PENETRATIONS, & ALL LOCATIONS WHERE DISSIMILAR MATERIALS MEET. TYPICAL OF ALL FLOOR, WALL, & CEILING LOCATIONS.

FLOOR PLAN LEGEND:

FE	FIRE EXTINGUISHER
FEC	FIRE EXTINGUISHER CABINET
	EMERGENCY EXIT LIGHT
	NEW DOOR - SEE DOOR SCHEDULE
	EXISTING DOOR TO REMAIN
	NEW WALL/PARTITION - SEE WALL TYPES
	EXISTING WALL TO REMAIN

\* NOTE - SEE FLOOR PLAN & PARTITION TYPES FOR ALL WALL WIDTHS & TYPICAL CONSTRUCTION.

---	CONSTRUCTION LIMITS
----	ONE HOUR FIRE WALL
-----	TWO HOUR FIRE WALL
.....	ONE HOUR SMOKE WALL

FULLY SPRINKLERED

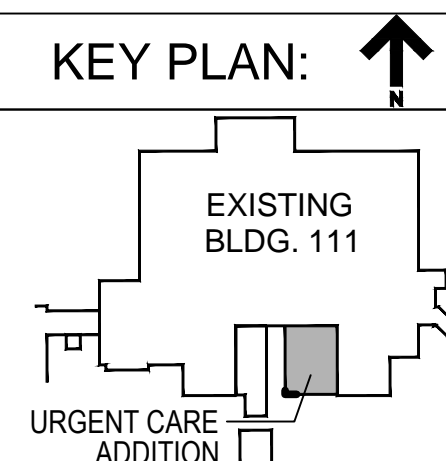
BID DOCUMENTS

Project Number  
695-402  
Building Number  
111  
Drawing Number  
A101

Office of  
Facilities  
Management



Department of Veterans Affairs  
Medical Center  
5000 W. National Avenue  
Milwaukee, WI



CONSULTANTS:

PCG  
R.A. Smith National  
SIGMA GROUP  
Lerdahl

PROJECT LEADER:

Chequamegon  
309 N. WATER ST.  
SUITE 650  
MILWAUKEE, WI 53202  
PHONE: (414) 258-6004

Drawing Title  
FIRST FLOOR PLAN  
Approved: Project Director

Project Title  
111 EXPAND URGENT CARE  
Location:  
VA Medical Center, Milwaukee, WI  
Date  
January 28th, 2016  
Checked By:  
KAB  
Drawn By: