

A  
three inches = one foot  
one and one half inches = one foot  
one inch = one foot  
three quarters inch = one foot  
one half inch = one foot  
three eighths inch = one foot  
one quarter inch = one foot  
one eighth inch = one foot

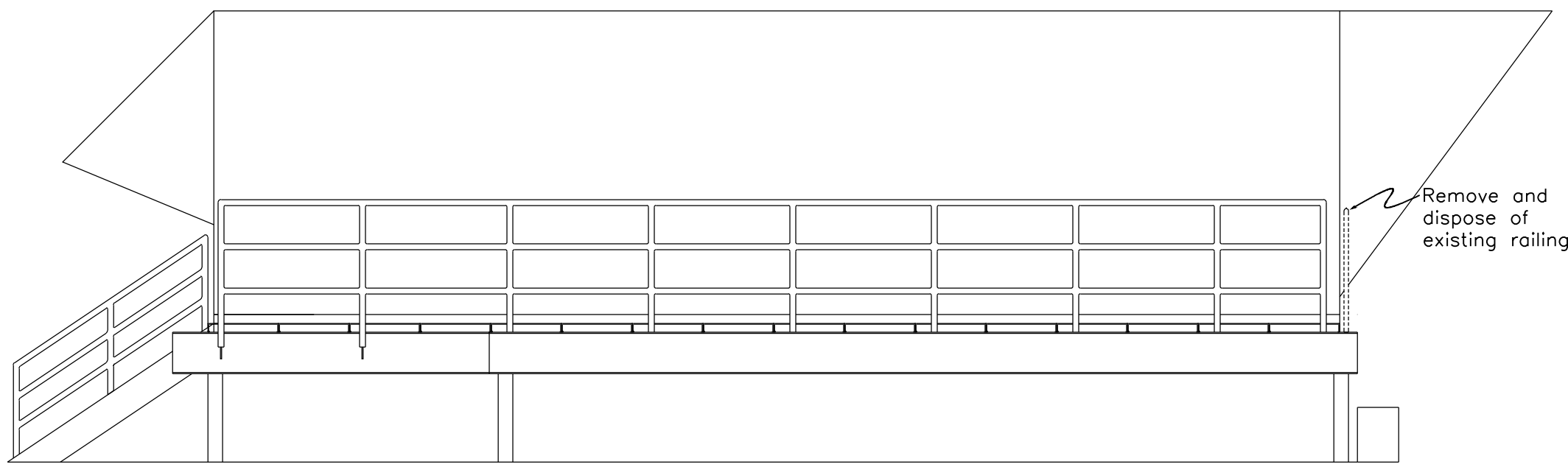
B  
one and one half inches = one foot  
one inch = one foot  
three quarters inch = one foot  
one half inch = one foot  
three eighths inch = one foot  
one quarter inch = one foot  
one eighth inch = one foot

C  
one inch = one foot  
three quarters inch = one foot  
one half inch = one foot  
three eighths inch = one foot  
one quarter inch = one foot  
one eighth inch = one foot

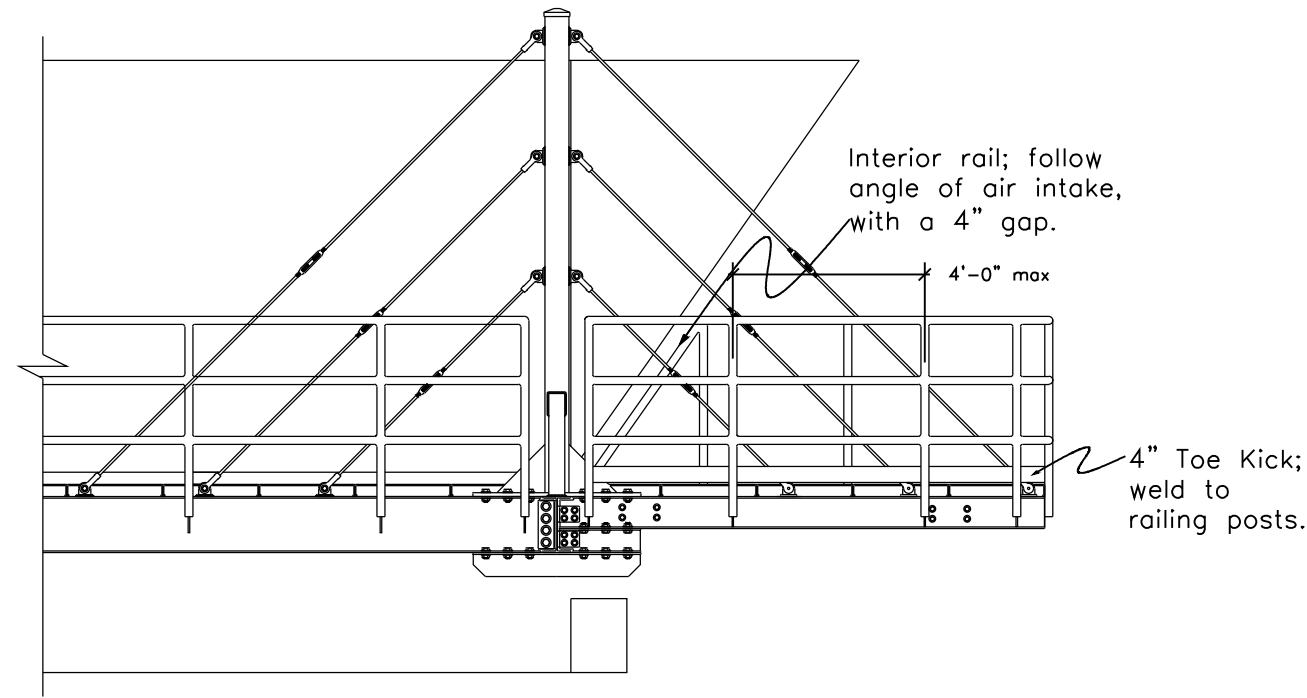
D  
three quarters inch = one foot  
one half inch = one foot  
three eighths inch = one foot  
one quarter inch = one foot  
one eighth inch = one foot

E  
one quarter inch = one foot  
one eighth inch = one foot

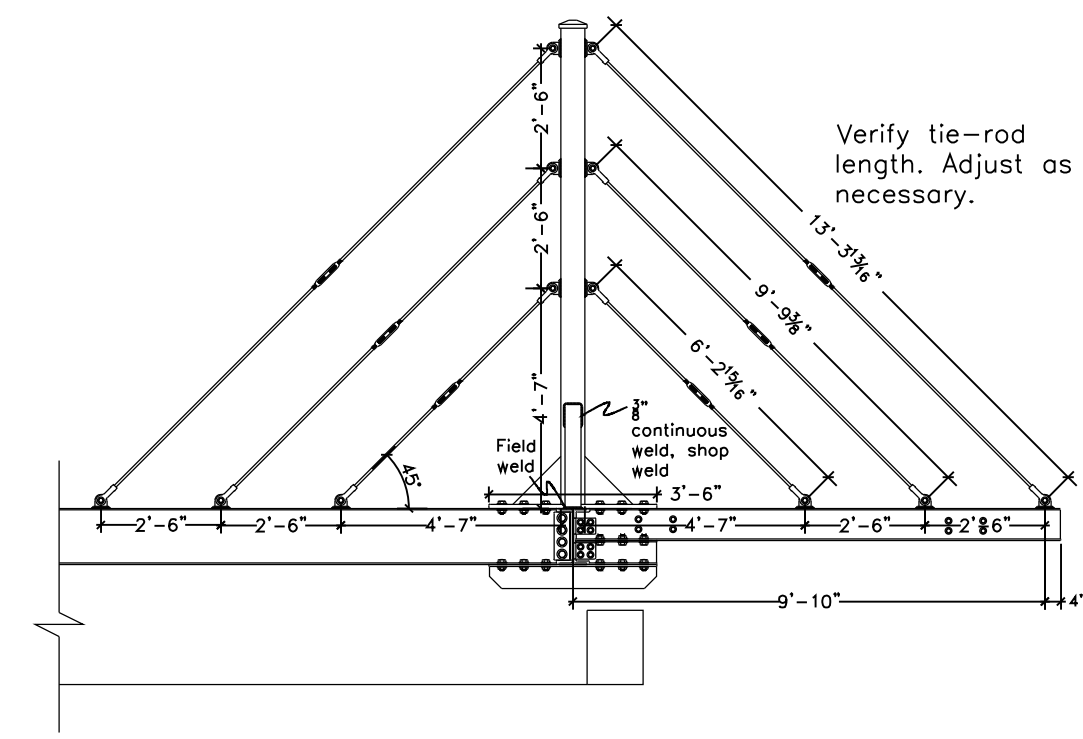
F  
one eighth inch = one foot



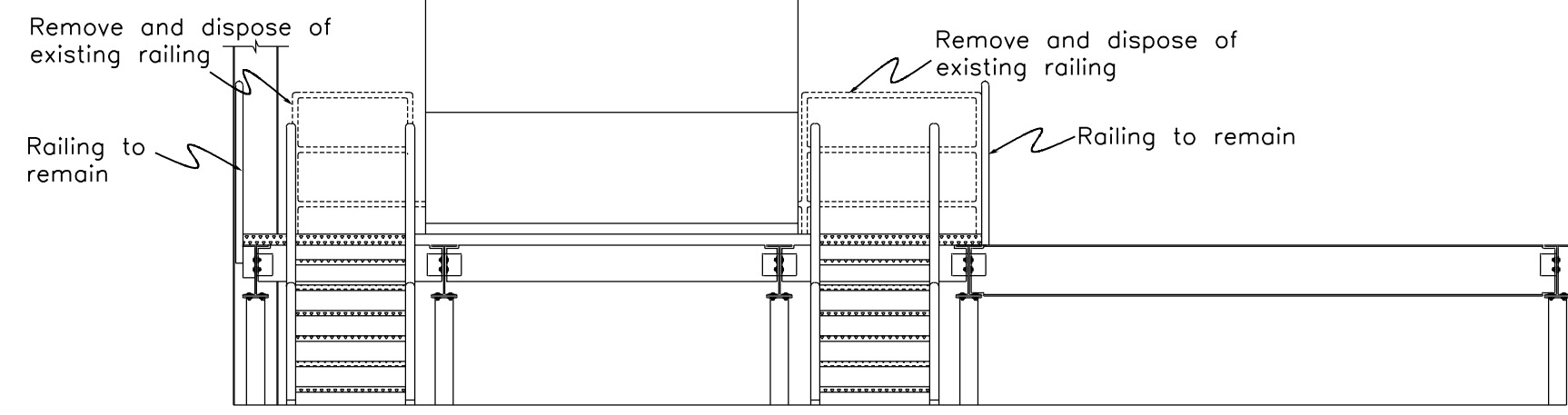
1.1 Existing Structure and Demolition Plan  
West Elevation, Scale: 1/4" = 1'



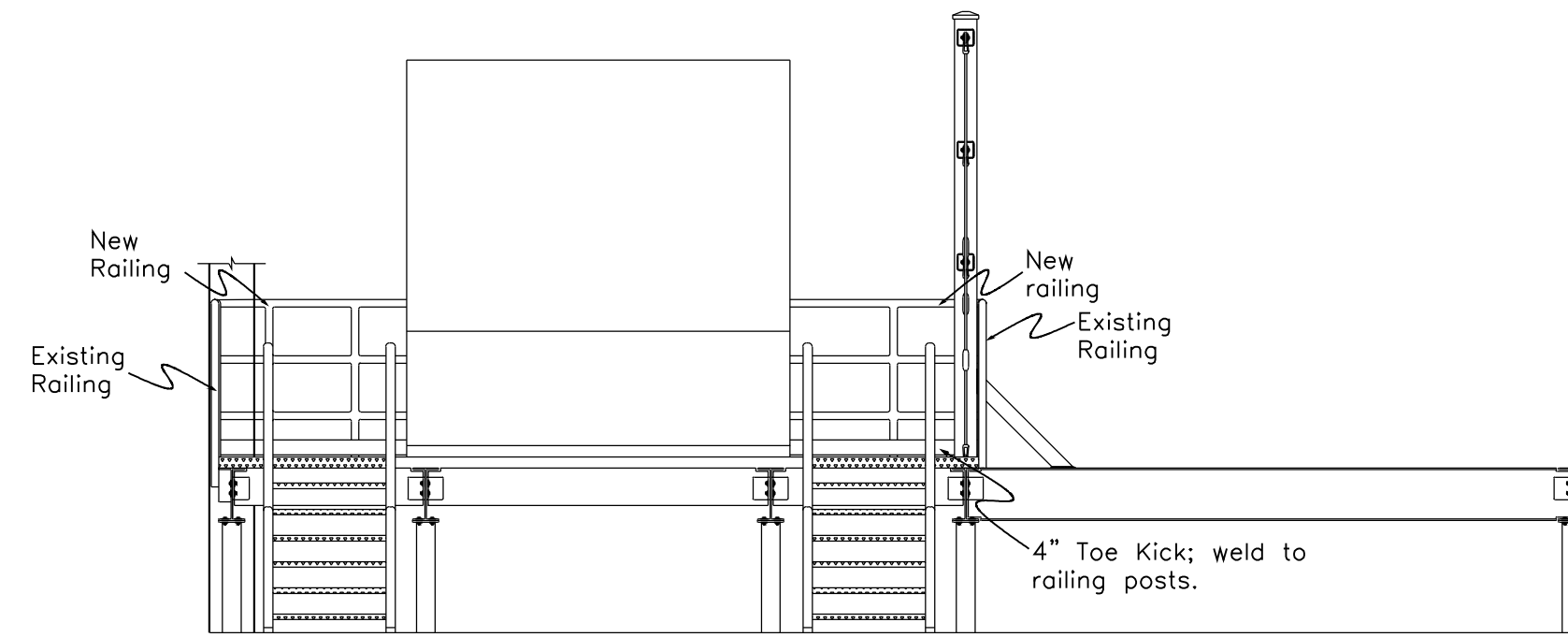
1.5 New Construction  
West Elevation, Scale: 1/4" = 1'



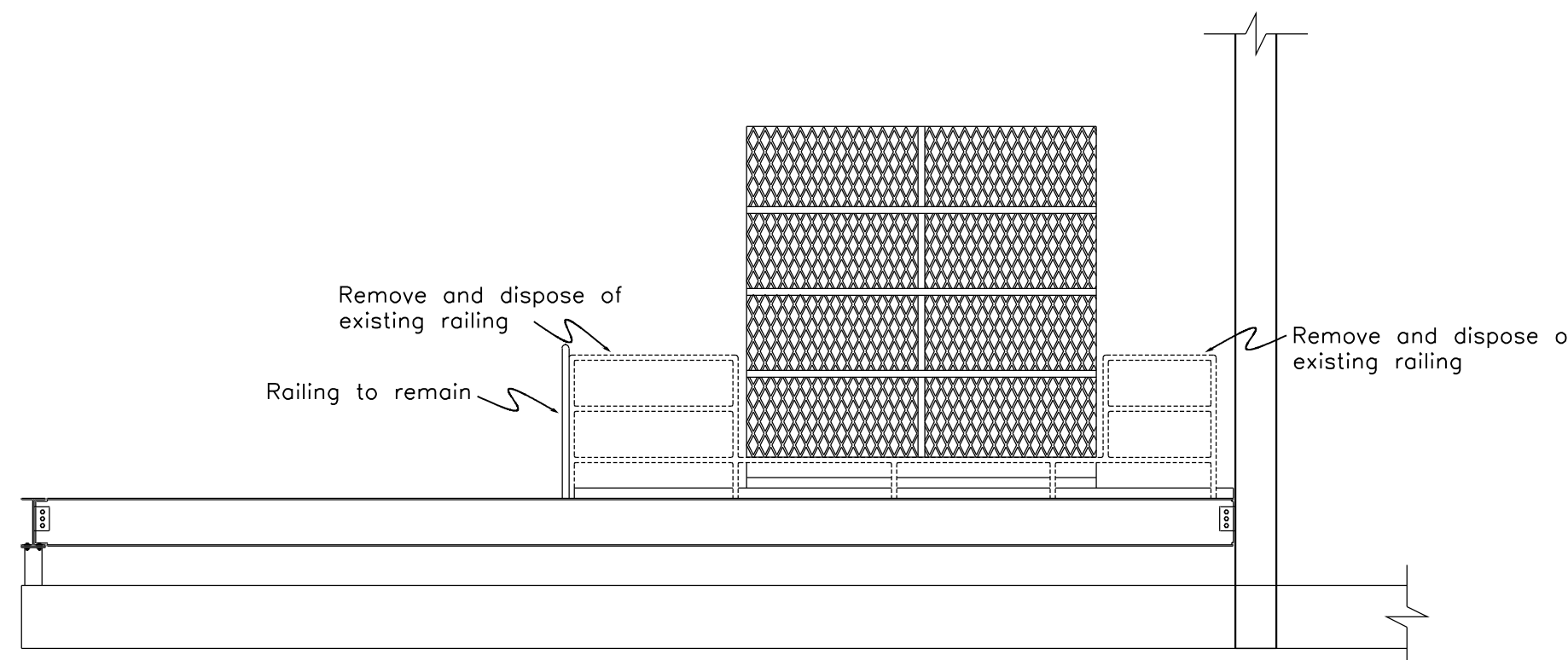
1.9 Structural Connections  
West Elevation, Scale: 1/4" = 1'



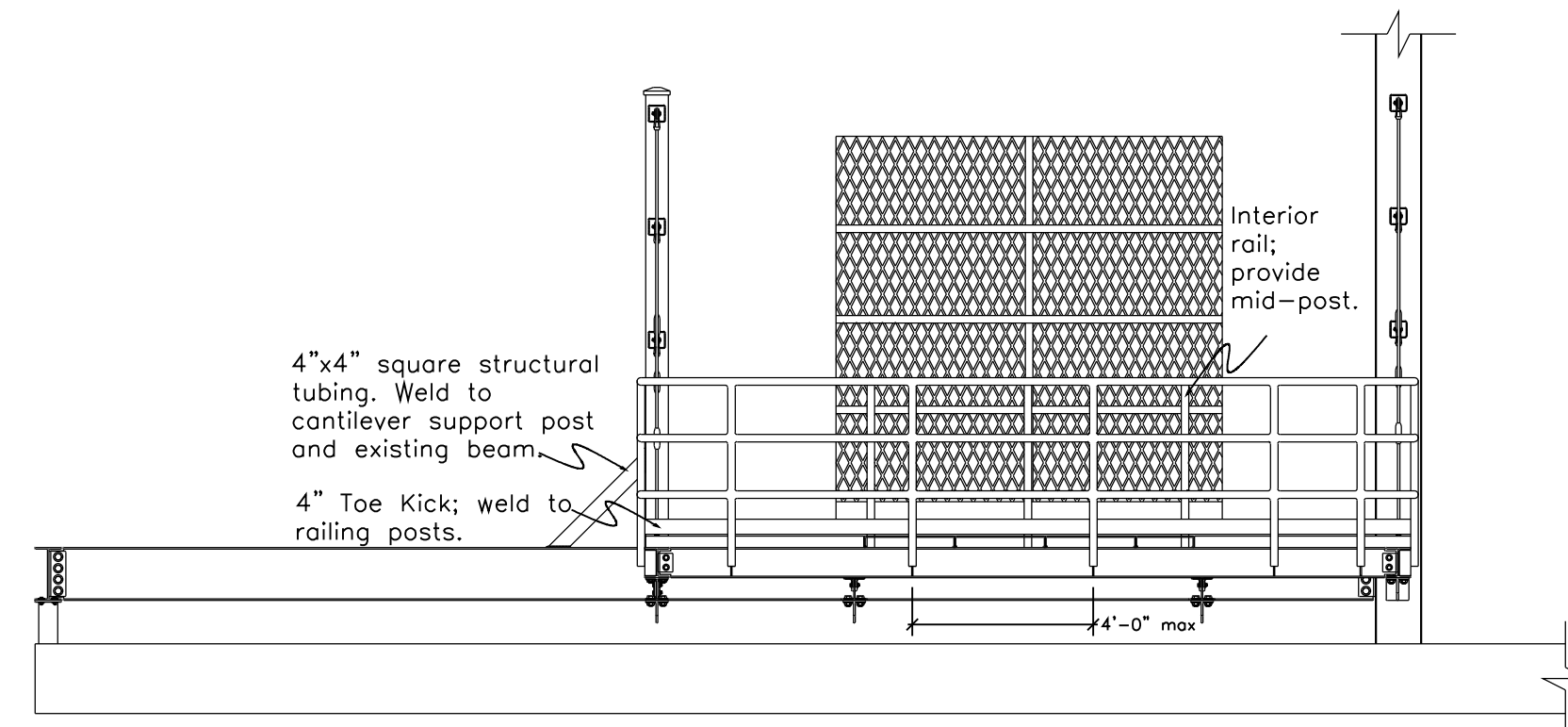
1.2 Existing Structure and Demolition Plan  
North Elevation, Scale: 1/4" = 1'



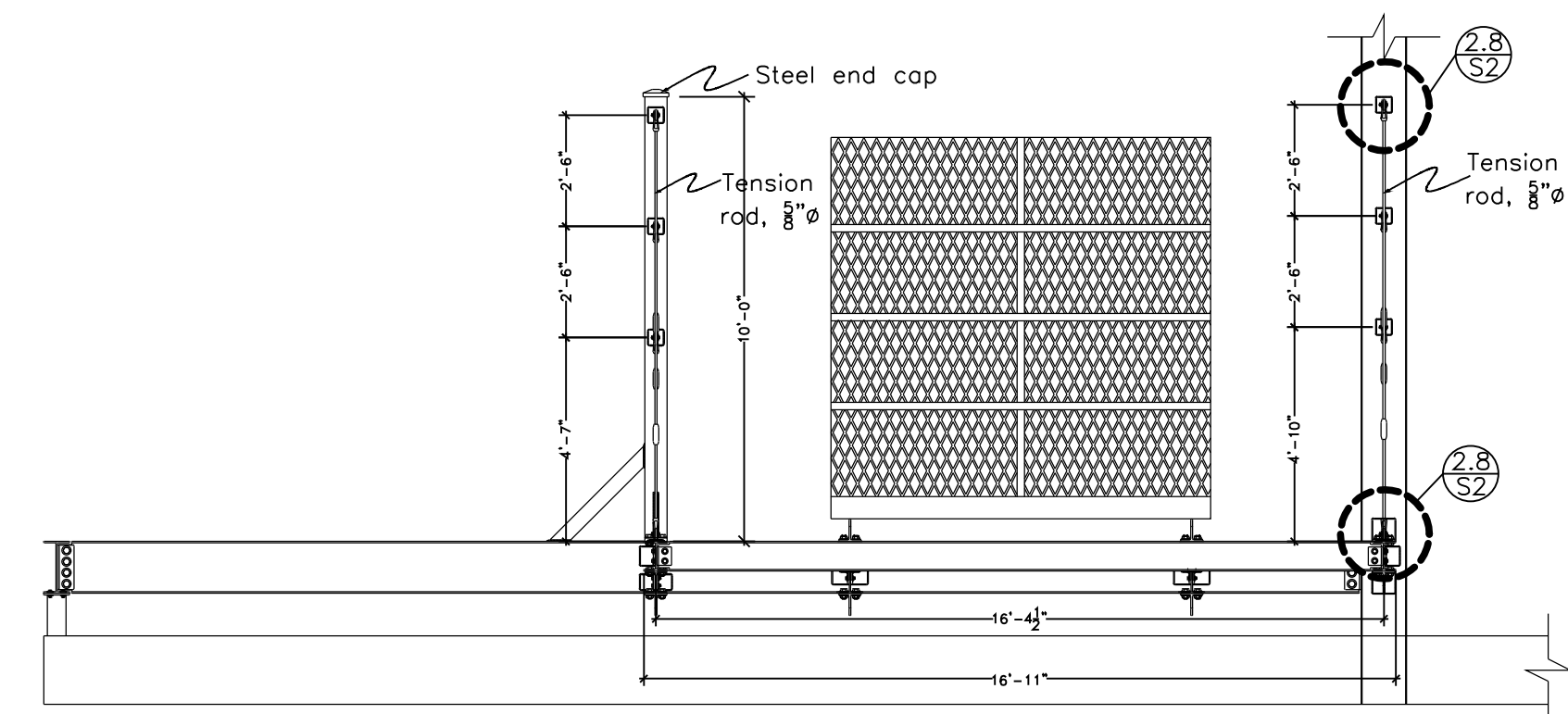
1.6 New Construction  
North Elevation, Scale: 1/4" = 1'



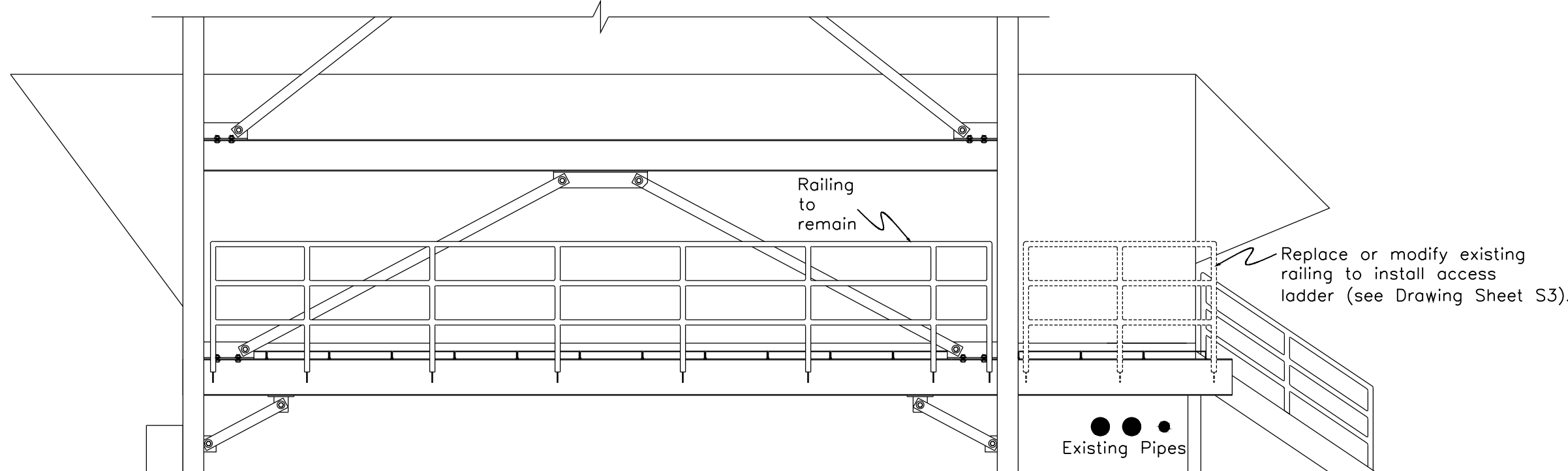
1.3 Existing Structure and Demolition Plan  
South Elevation, Scale: 1/4" = 1'



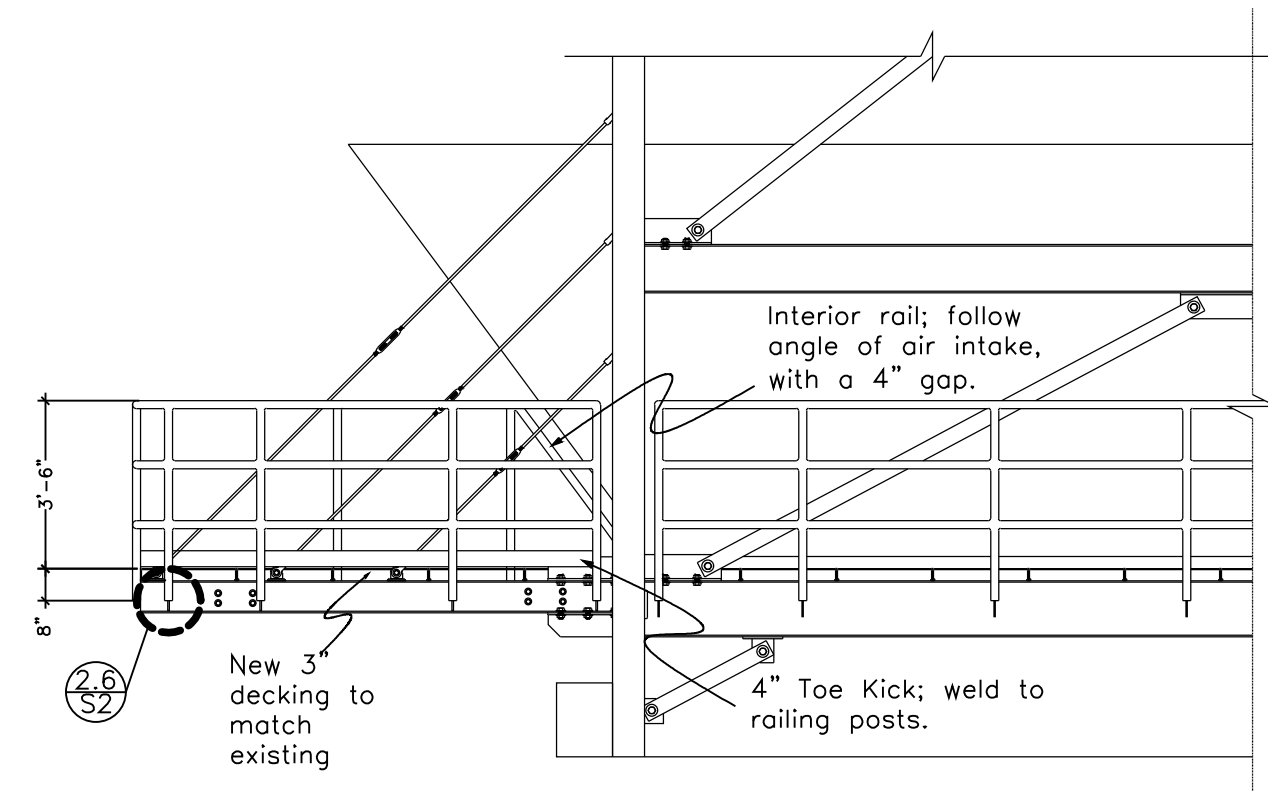
1.7 New Construction  
South Elevation, Scale: 1/4" = 1'



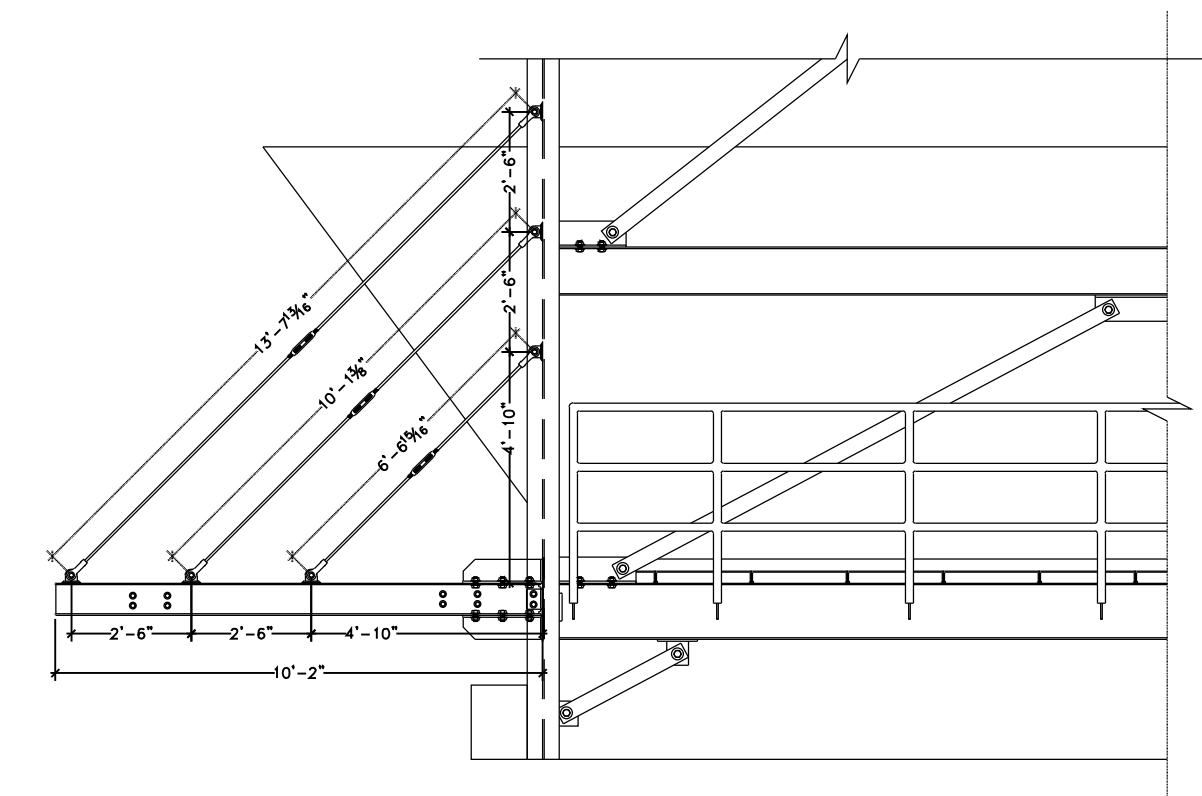
1.10 Structural Connections  
South Elevation, Scale: 1/4" = 1'



1.4 Existing Structure and Demolition Plan  
West Elevation, Scale: 1/4" = 1'



1.8 New Construction  
East Elevation, Scale: 1/4" = 1'



1.11 Structural Connections  
East Elevation, Scale: 1/4" = 1'

CONSULTANTS:		ARCHITECT/ENGINEERS:		Drawing Title ELEVATIONS	Project Title CONSTRUCT CATWALK MICROBIOLOGY A/H	Project Number 636-11-841	Nebraska Western Iowa Healthcare System	
				Approved Project Director	Location OMAHA VAMC	Building Number ONE		
					Date 6/24/2011	Checked	Drawn CMW	Omaha VAMC
								Department of Veterans Affairs
Revisions:		Date				S1		
						Dwg. 2 of 4		