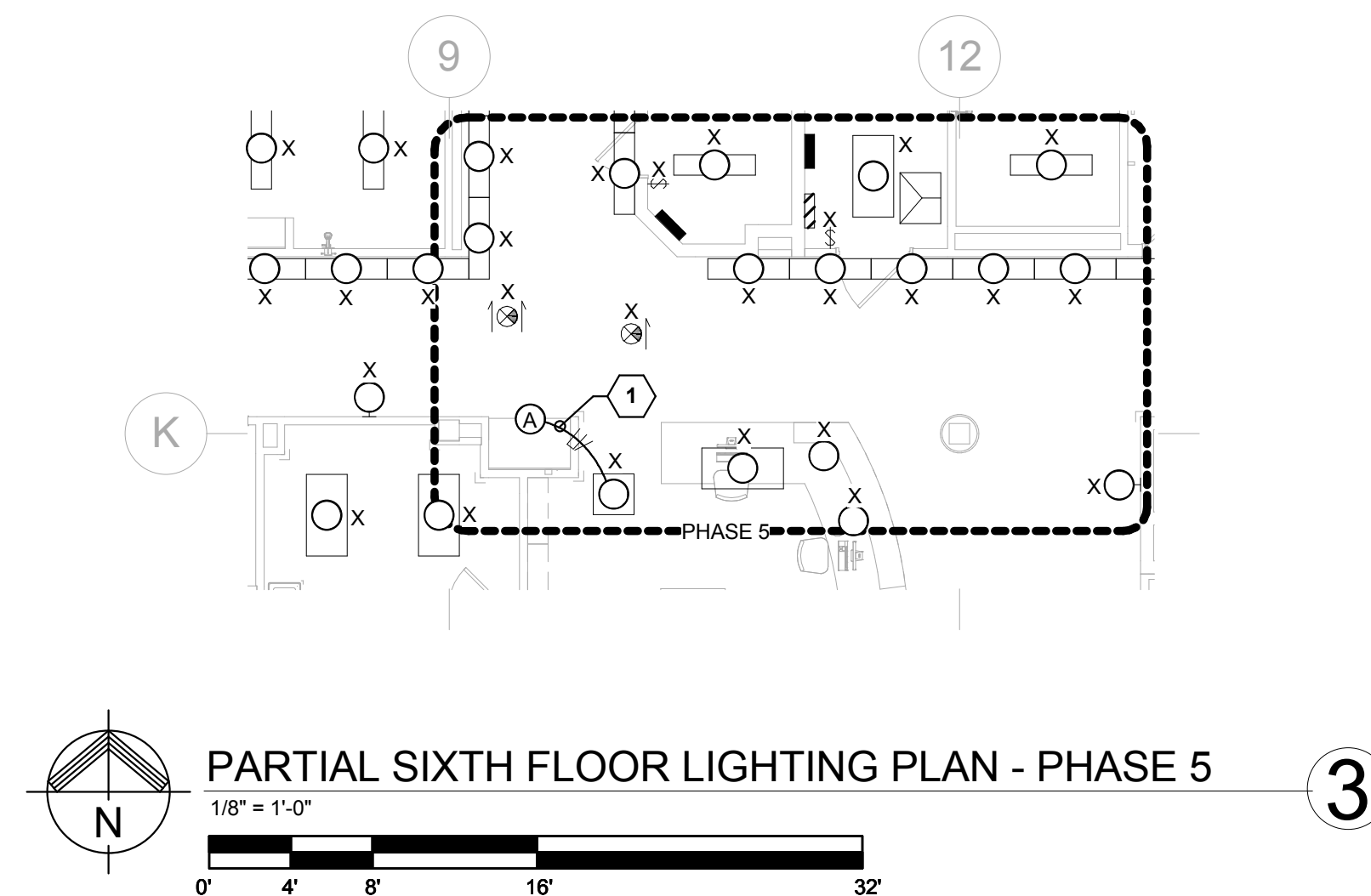
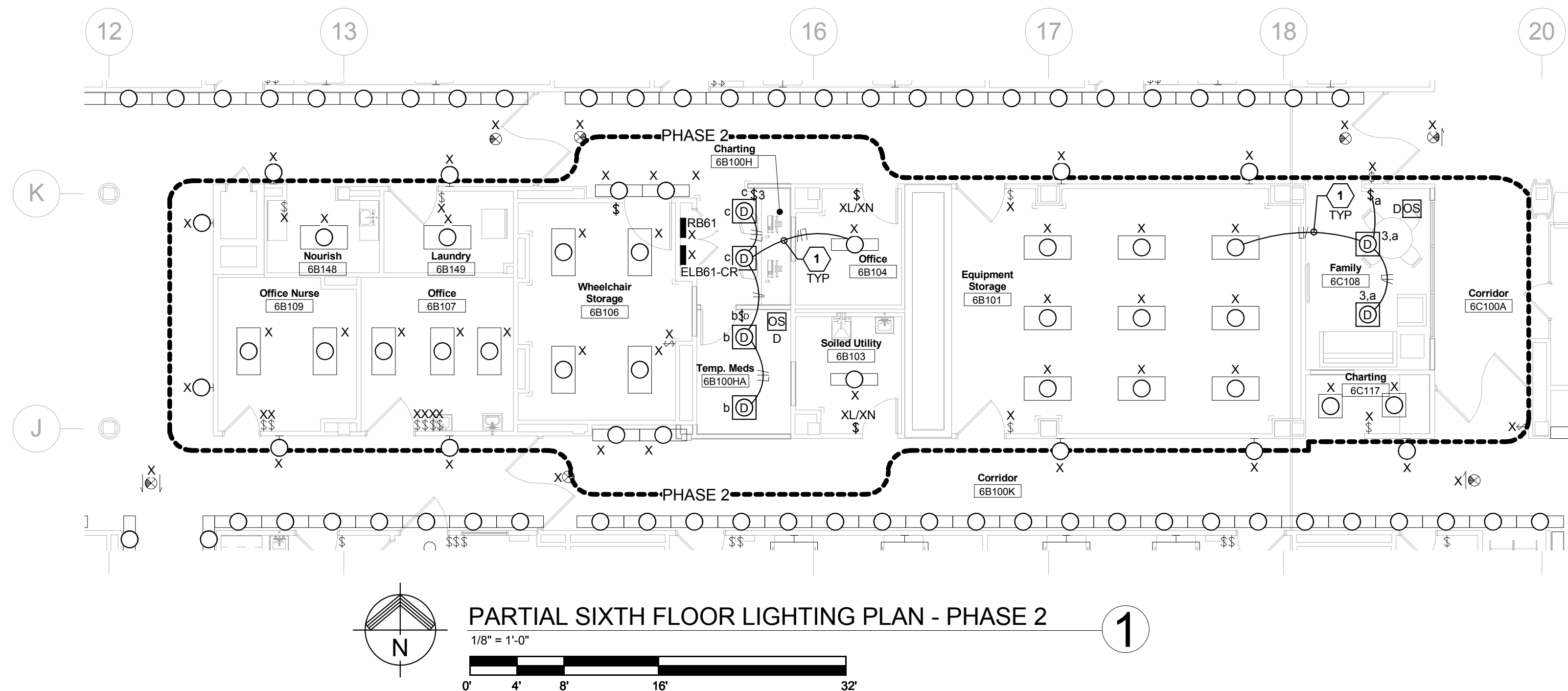


LIGHTING GENERAL NOTES	
L1	REFER TO ARCHITECTURAL REFLECTED CEILING PLAN FOR FINAL LOCATION OF ALL NEW CEILING MOUNTED LIGHTING FIXTURES. CLOSELY COORDINATE LOCATION OF LIGHTING FIXTURES AND SMOKE DETECTORS WITH HVAC DUCTS, DIFFUSERS, SPRINKLERS, PLUMBING, ETC. AND ADJUST LOCATIONS OF SELECTED ELECTRICAL EQUIPMENT IN ACCORDANCE WITH ENGINEER'S INSTRUCTIONS.
L2	REFER TO THE ARCHITECTURAL PLANS FOR EQUIPMENT LAYOUT. CLOSELY COORDINATE THE EXACT LOCATION OF ALL OUTLETS AND DEVICES WITH ARCHITECTURAL ELEVATIONS. ADJUST LOCATIONS AND MOUNTING HEIGHTS WHERE NECESSARY TO PREVENT INTERFERENCE WITH FURNITURE, FIXED CASEWORK, EQUIPMENT, ETC. VERIFY ALL CHANGES PRIOR TO ROUGH-IN.
L3	REFER TO ELECTRICAL DETAILS PLANS FOR OCCUPANCY SENSOR WIRING DIAGRAMS AND PROGRAM SCHEDULE FOR ADDITIONAL INFORMATION.
L4	A DEDICATED NEUTRAL SHALL BE PROVIDED FOR EACH AND EVERY 120V AND 277V BRANCH CIRCUIT. MULTIWIRE BRANCH CIRCUITS WITH SHARED NEUTRALS ARE NOT PERMITTED.
L5	NO MORE THAN (3) SINGLE-PHASE BRANCH CIRCUITS SHALL BE INSTALLED IN ANY ONE CONDUIT. DIFFERENT POWER SYSTEMS (NORMAL, CRITICAL, LIFE SAFETY) SHALL NOT BE INSTALLED IN THE SAME CONDUIT.
DEDUCT ALTERNATE #3:	
OMIT ALL WORK ON THIS DRAWING ASSOCIATED WITH PHASE 1A, 2, 3 & 6A UPON THE ACCEPTANCE OF DEDUCT ALTERNATE #3.	
CODED NOTES:	
1	EXTEND LOCAL UNSWITCHED LIGHTING CIRCUIT AND CONNECT TO NEW FIXTURES VIA 3/4" C - 2#12 AND 1#12EG AND NEW LOCAL SWITCHING AS INDICATED.
2	REMOVE EXISTING LIGHTING FIXTURE INDICATED. RELOCATE AND EXTEND LOCAL SWITCHED LIGHTING CIRCUIT AND CONNECT TO NEW FIXTURES VIA 3/4" C - 2#12 AND 1#12EG.



		CONSULTANTS:				ARCHITECT:		Drawing Title PARTIAL SIXTH FLOOR LIGHTING PLANS - PHASES 1B, 2, 3 & 5		Project Title Renovate Inpatient SCI Suite		Project Number 541-16-106		Office of Facilities Management	
		 <div>FREDRICK, FREDRICK & HELLER ENGINEERS, INC. 672 EAST 80TH AVE. SUITE 200 BROADVIEW HTS., OHIO 44137 TEL: (440) 546-9698 FAX: (440) 546-9699</div>						 <div>13212 Shaker Square Suite 204 Cleveland, Ohio 44120 P. 216.752.1800 F. 216.752.3833</div>		Approved: Project Director		Location VAMC - WADE PARK			
Addendum 1 Bid Issue		07/15/2016 05/10/2016								Date 05/10/2016		Checked MPL		Drawn JDM	
												Drawing Number 1-E2.1		Dwg. of	

	Department of Veterans Affairs
---	--------------------------------