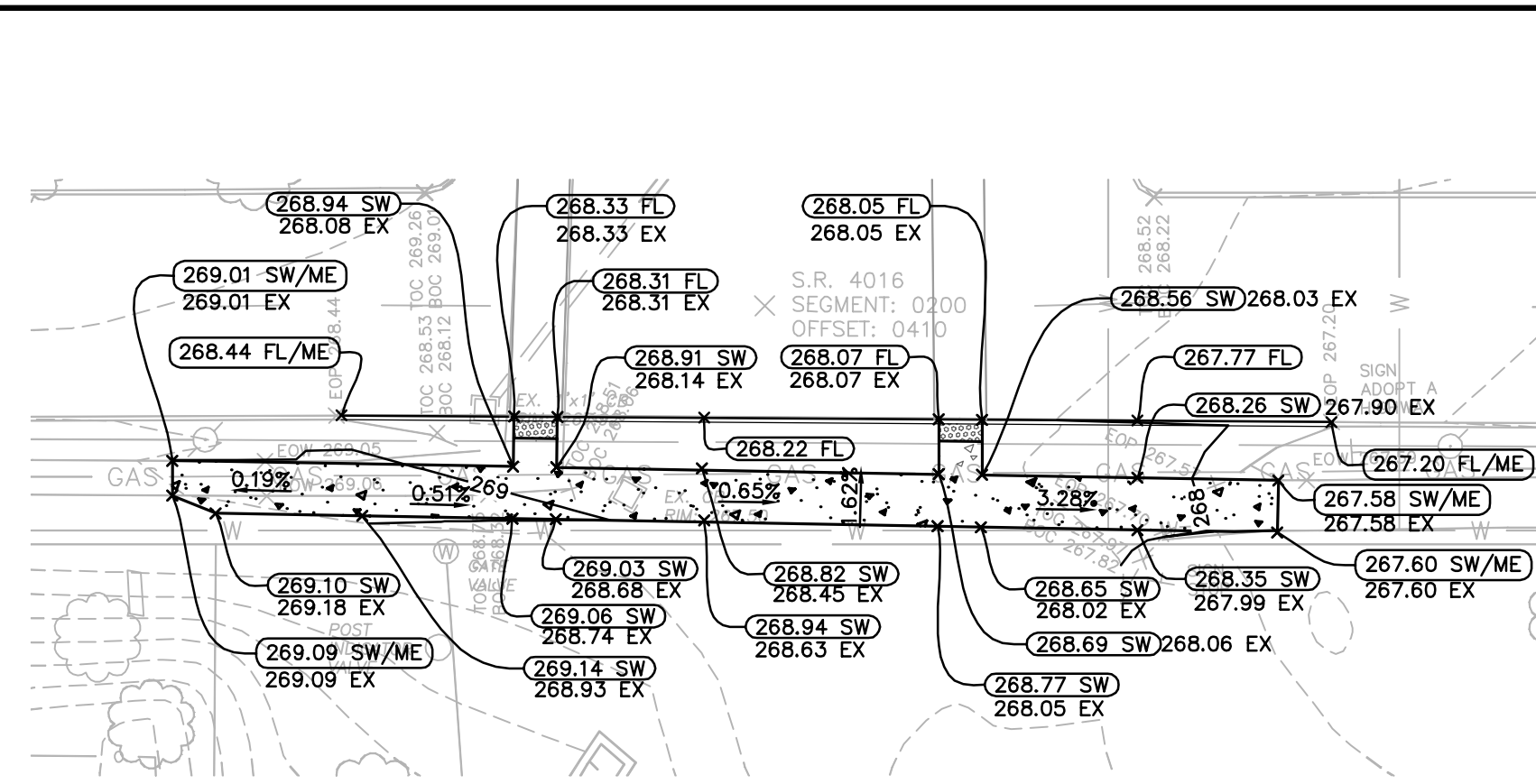
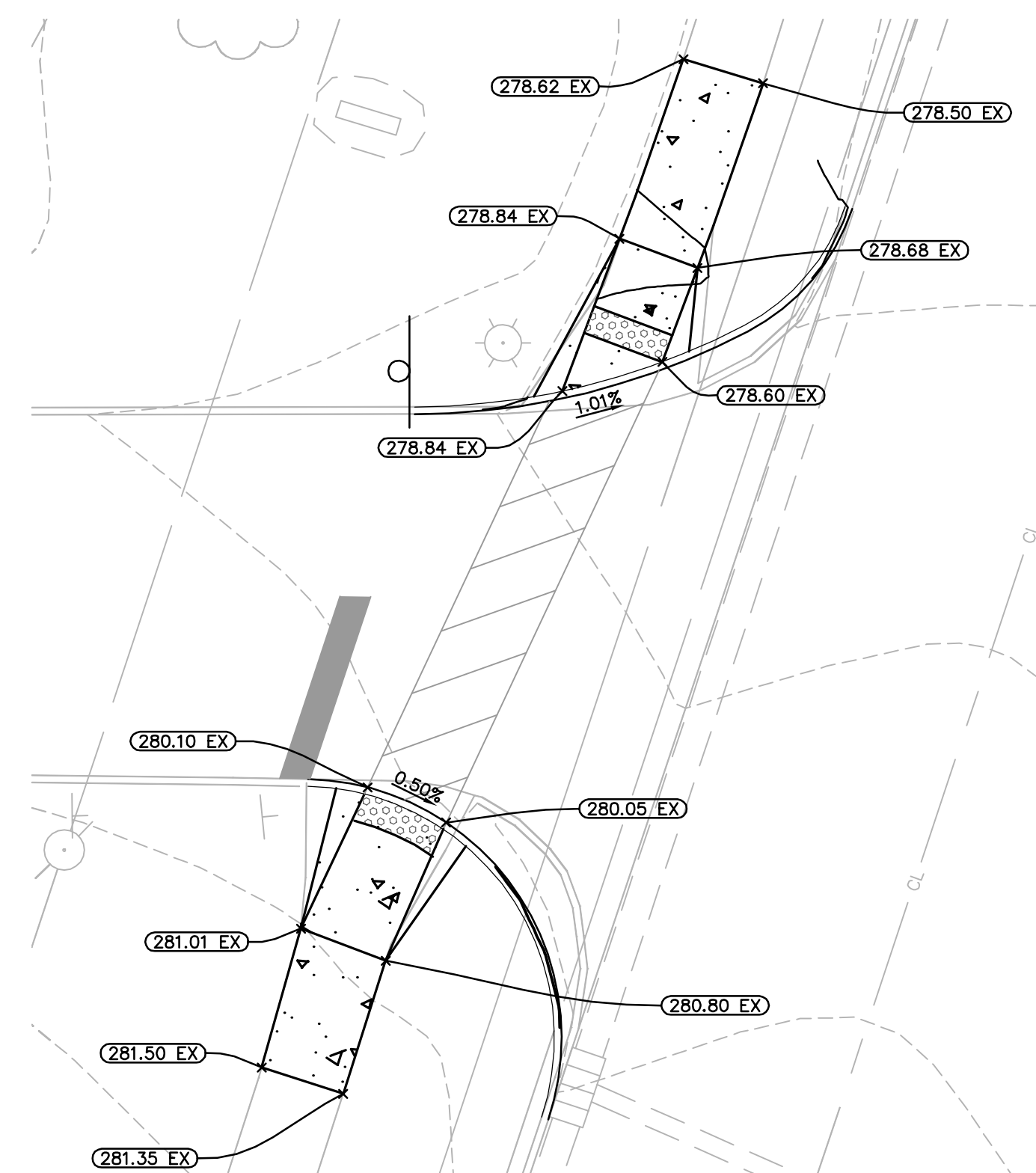


PROPOSED ENTRANCE DETAILED GRADING ENLARGEMENT
SCALE: 1" = 10'

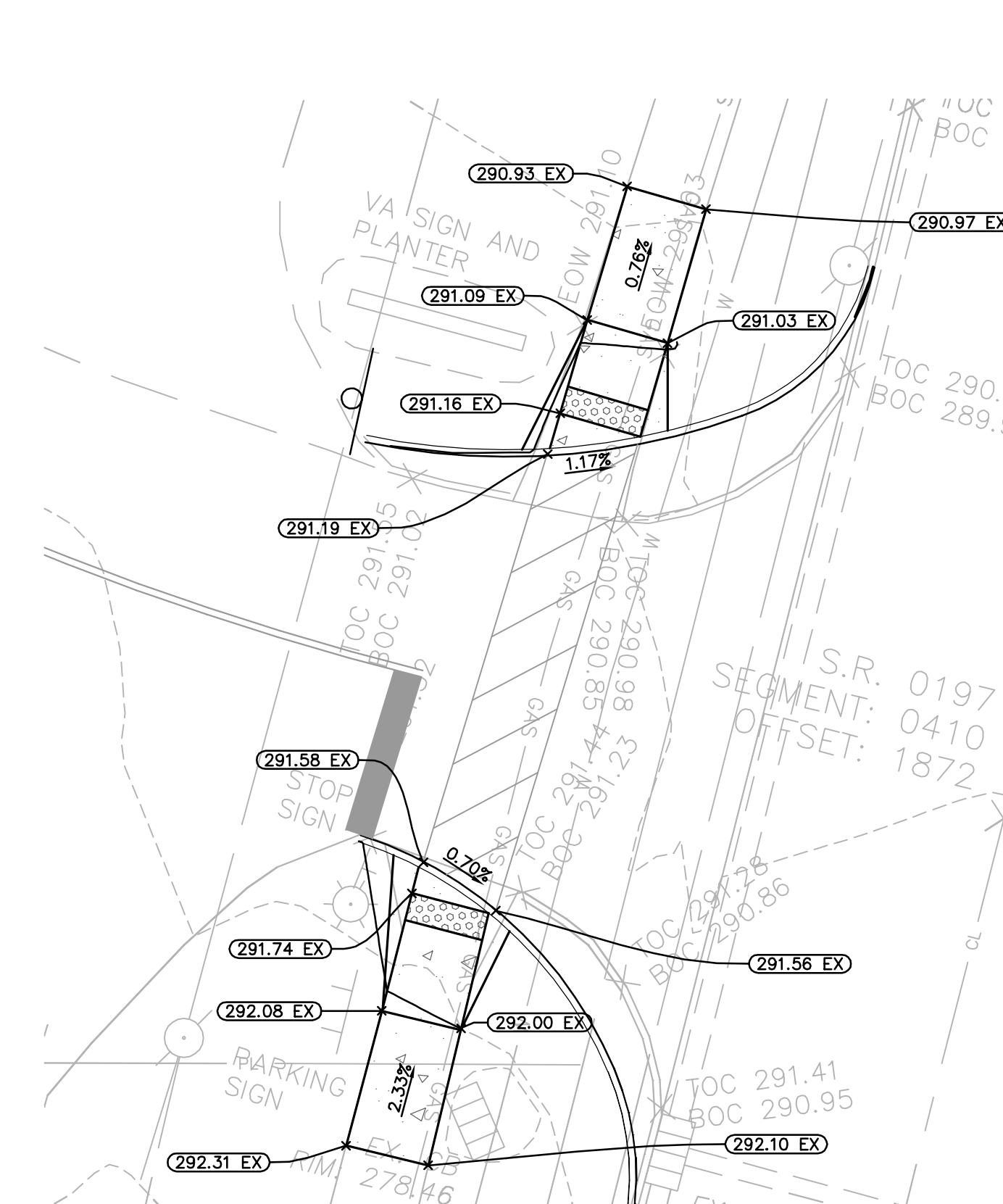


SIDEWALK DETAILED GRADING ENLARGEMENT
SCALE 1" = 20'

- NOTES:
1. CONSTRUCT ALL PROPOSED PEDESTRIAN FACILITIES (WITHIN THE PUBLIC RIGHT-OF-WAYS OR ON PRIVATE PROPERTY) ON THESE PLANS TO COMPLY WITH THE AMERICANS WITH DISABILITIES ACT, THE 2010 ADAAG STANDARDS AS PER THE DISTRICT'S SETTLEMENT/FEDERAL COURT ORDERS. IT REMAINS THE ONUS OF THE PERMITTEE AND/OR HIS AGENT(S) TO ENSURE COMPLIANCE TO THE ABOVE REFERENCED STANDARDS, SETTLEMENTS AND ORDERS.
 2. A PRE-CONSTRUCTION MEETING WITH PENNDOT AND CITY STAFF IS RECOMMENDED PRIOR TO ANY WORK BEING EXECUTED IN THE PUBLIC RIGHT-OF-WAYS.
 3. ON SITE PRIVATE RAMPS HAVE A MAXIMUM LONGITUDINAL SLOPE OF 5% AND A MAXIMUM CROSS SLOPE OF 2%.
 4. EXISTING SANITARY SEWER MANHOLE RIM NOTED ON THIS SHEET TO BE USED AS AN ELEVATION BENCHMARK FOR THE PROJECT.



OLD FRENCH ROAD ENTRANCE - ACCESS B
SCALE 1" = 10'



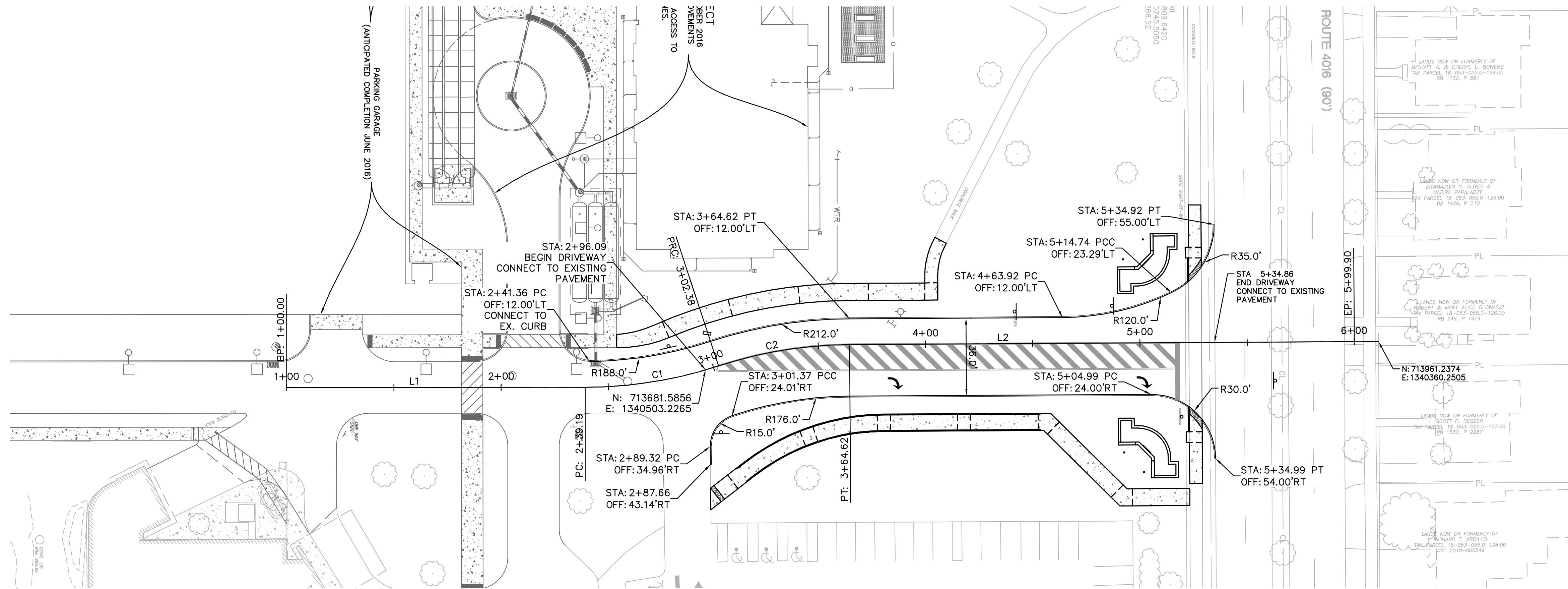
OLD FRENCH ROAD ENTRANCE - ACCESS C
SCALE 1" = 10'

- LEGEND
- EX. MAJOR CONTOUR
 - EX. MINOR CONTOUR
 - EX. UNDERGROUND WATERLINE
 - EX. UNDERGROUND SANITARY SEWER
 - EX. UNDERGROUND NATURAL GAS
 - EX. UNDERGROUND STORM SEWER
 - EX. UNDERGROUND ELECTRICAL LINE
 - EX. FENCE
 - ROAD CENTERLINE
 - STORM INLET
 - SEWER MANHOLE
 - GATE VALVE
 - SIGN
 - LIGHT POLE
 - FIRE HYDRANT
 - EX. TREE
 - LOD
 - 270
 - 269
 - 267
 - 265
 - 263
 - 261
 - 259
 - 257
 - 255
 - 253
 - 251
 - 249
 - 247
 - 245
 - 243
 - 241
 - 239
 - 237
 - 235
 - 233
 - 231
 - 229
 - 227
 - 225
 - 223
 - 221
 - 219
 - 217
 - 215
 - 213
 - 211
 - 209
 - 207
 - 205
 - 203
 - 201
 - 199
 - 197
 - 195
 - 193
 - 191
 - 189
 - 187
 - 185
 - 183
 - 181
 - 179
 - 177
 - 175
 - 173
 - 171
 - 169
 - 167
 - 165
 - 163
 - 161
 - 159
 - 157
 - 155
 - 153
 - 151
 - 149
 - 147
 - 145
 - 143
 - 141
 - 139
 - 137
 - 135
 - 133
 - 131
 - 129
 - 127
 - 125
 - 123
 - 121
 - 119
 - 117
 - 115
 - 113
 - 111
 - 109
 - 107
 - 105
 - 103
 - 101
 - 99
 - 97
 - 95
 - 93
 - 91
 - 89
 - 87
 - 85
 - 83
 - 81
 - 79
 - 77
 - 75
 - 73
 - 71
 - 69
 - 67
 - 65
 - 63
 - 61
 - 59
 - 57
 - 55
 - 53
 - 51
 - 49
 - 47
 - 45
 - 43
 - 41
 - 39
 - 37
 - 35
 - 33
 - 31
 - 29
 - 27
 - 25
 - 23
 - 21
 - 19
 - 17
 - 15
 - 13
 - 11
 - 9
 - 7
 - 5
 - 3
 - 1

ABBREVIATIONS:

- TC - TOP OF CURB
- SW - SIDEWALK
- ME - MATCH EXISTING
- HP - HIGH POINT
- PV - PAVEMENT
- GR - FINISHED GROUND
- TW - TOP OF WALL
- BW - BOTTOM OF WALL
- EX - EXISTING ELEV.

UPDATE FOR CONSTRUCTION 10/21/2015 UPDATE FOR CONSTRUCTION 09/15/2015 REV PER PENNDOT COMMENTS 07/17/2015 REV PER PENNDOT COMMENTS 02/13/2015 REV PER PENNDOT COMMENTS 08/19/2014 REV PER PENNDOT COMMENTS 05/21/2014 Revisions: Date	ARCHITECT/ENGINEER: Civil Kimley-Horn and Associates, Inc. Kimley-Horn and Associates, Inc. 11400 Commerce Park Drive Suite 400 Reston, VA 20191 Phone: (703) 674-1300 Fax: (703) 674-1350	Transportation Traffic Analysis & Design, Inc. TADI N36 W7505 Buchanan Court Cedarburg, WI 53012 Phone: (262) 377-1845	Survey Rabell Surveying & Engineering RABELL 10560 Walnut Street Albion, Pennsylvania 16401 Phone: (814) 756-4384 Fax: (814) 756-5638	Drawing Title DETAILED GRADING PLAN	Project Title IMPROVED TRAFFIC FLOW - ENGINEERING DESIGN	Project Number 562-12-107 Building Number N/A Drawing Number C-310 Dwg. 7 of 32	Location ERIE, PA Date 10/21/2015 Checked SW Drawn KB	Office of Construction and Facilities Management Department of Veterans Affairs
---	--	---	---	---	--	--	--	--

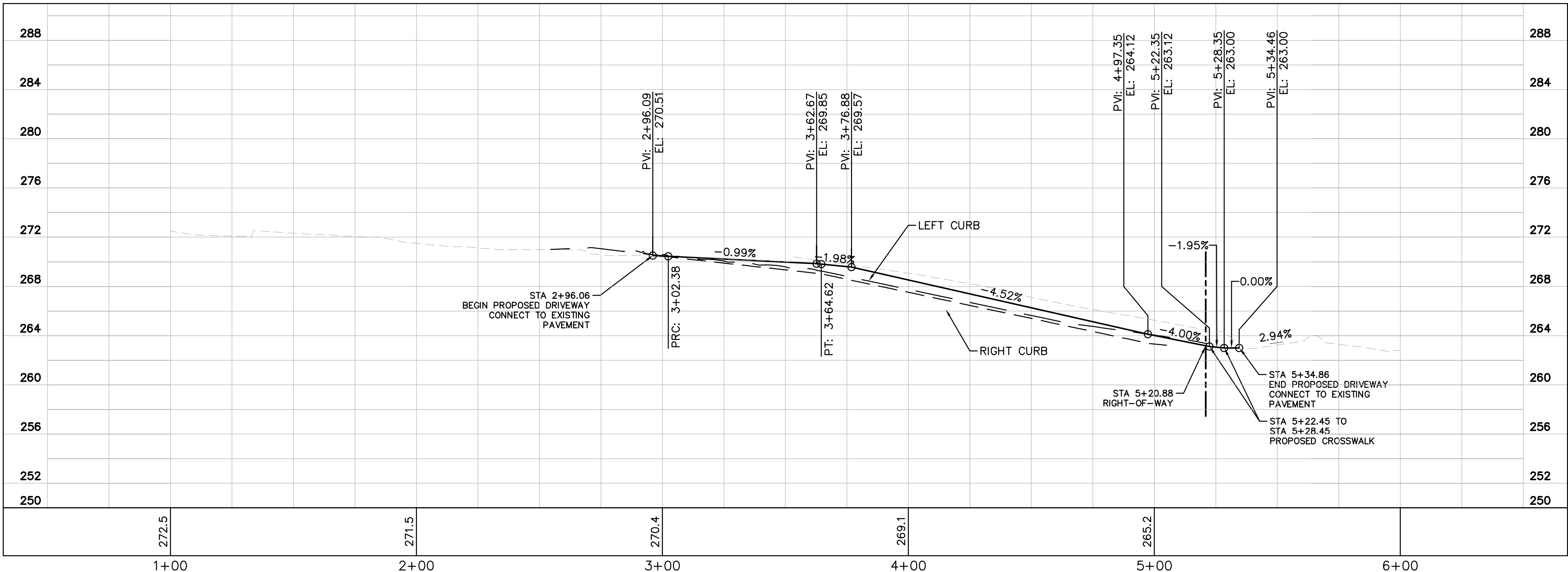


ENTRY ROAD PLAN VIEW
SCALE: 1" = 30'

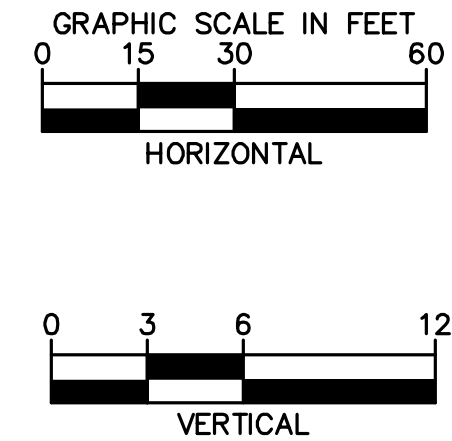
LINE TABLE		
LINE	LENGTH	BEARING
L1	139.19	N24°43'04.00"W
L2	235.28	N24°59'30.20"W

CURVE TABLE						
CURVE	RADIUS	LENGTH	CHORD BEARING	CHORD	DELTA	TANGENT
C1	200.00'	63.20'	N33°46'13"W	62.94'	18°06'17"	31.86'
C2	200.00'	62.24'	N33°54'26"W	61.99'	17°49'51"	31.37'

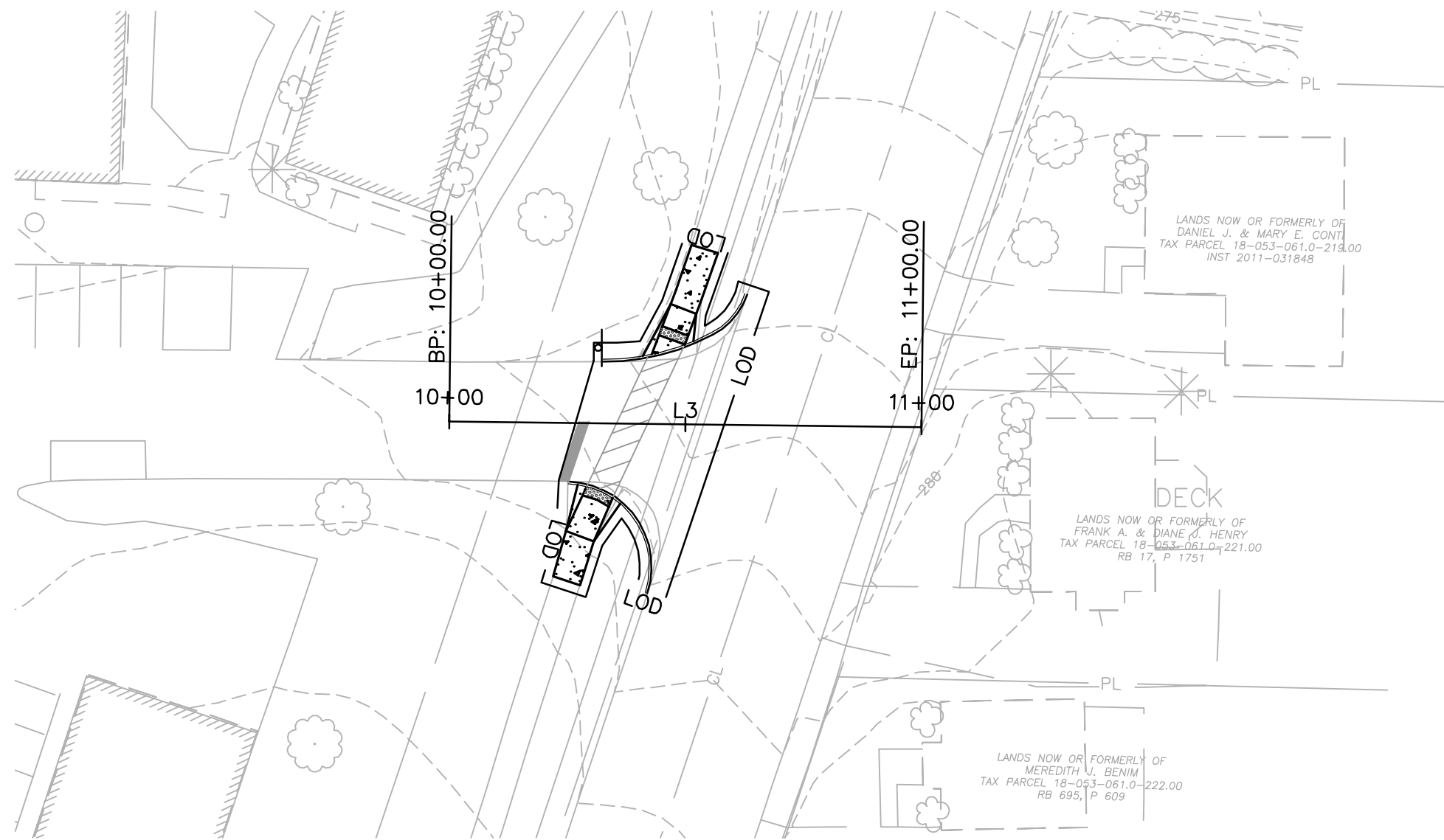
NOTES:
1. ALL DIMENSIONS ARE TO THE FACE OF CURB
UNLESS OTHERWISE NOTED



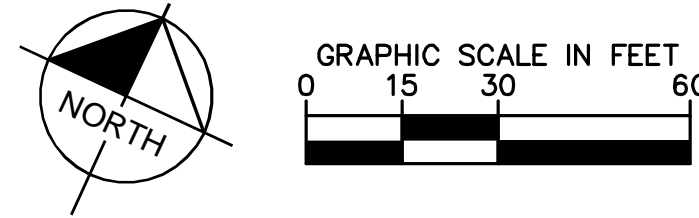
ENTRY ROAD PROFILE VIEW
HORIZONTAL SCALE: 1" = 30' VERTICAL SCALE: 1" = 6'



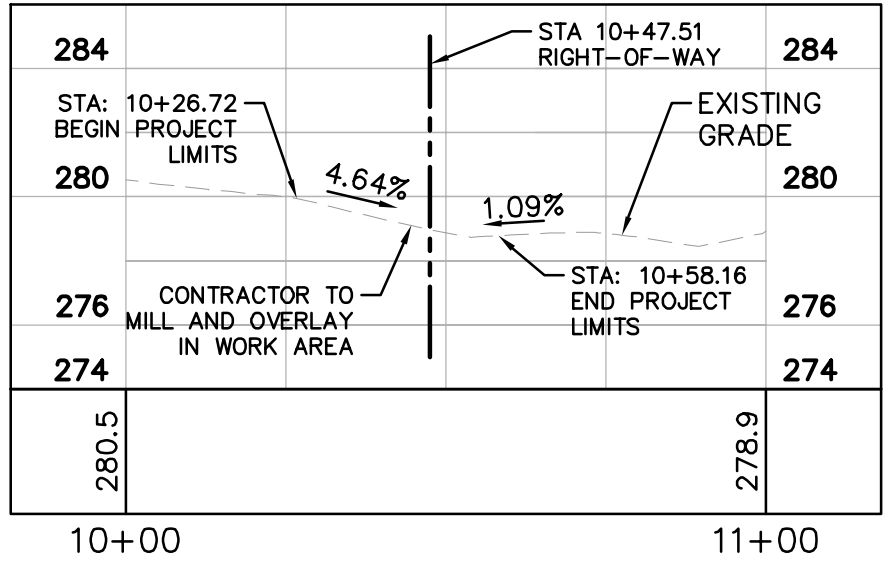
<div>Revisions: UPDATE FOR CONSTRUCTION 05/16/2016 UPDATE FOR CONSTRUCTION 10/21/2015 UPDATE FOR CONSTRUCTION 09/15/2015 REV PER PENNDOT COMMENTS 07/17/2015 REV PER PENNDOT COMMENTS 02/13/2015 REV PER PENNDOT COMMENTS 08/19/2014 REV PER PENNDOT COMMENTS 05/21/2014</div>	<div>ARCHITECT/ENGINEER: Kimley»Horn Civil Kimley-Horn and Associates, Inc. 11400 Commerce Park Drive Suite 400 Reston, VA 20191 Phone: (703) 674-1300 Fax: (703) 674-1350</div>	<div>Transportation Traffic Analysis & Design, Inc. TADI N36 W7505 Buchanan Court Cedarburg, WI 53012 Phone: (262) 377-1845</div>	<div>Survey Rabell Surveying & Engineering RABELL Surveying & Engineering, LLC 10560 Walnut Street Albion, Pennsylvania 16401 Phone: (814) 756-4384 Fax: (814) 756-5638</div>	<div></div>	<div>ENTRY ROAD PLAN AND PROFILE</div>	<div>Project Title IMPROVED TRAFFIC FLOW - ENGINEERING DESIGN</div>	<div>Project Number 562-12-107 Building Number N/A</div>	<div>Location ERIE, PA</div>	<div>Date 10/21/2015</div>	<div>Checked SW</div>	<div>Drawn KB</div>	<div>Drawing Number C-320 Dwg. 8 of 32</div>	<div>Office of Construction and Facilities Management Department of Veterans Affairs</div>
--	---	--	--	-------------	--	---	--	----------------------------------	--------------------------------	---------------------------	-------------------------	--	--



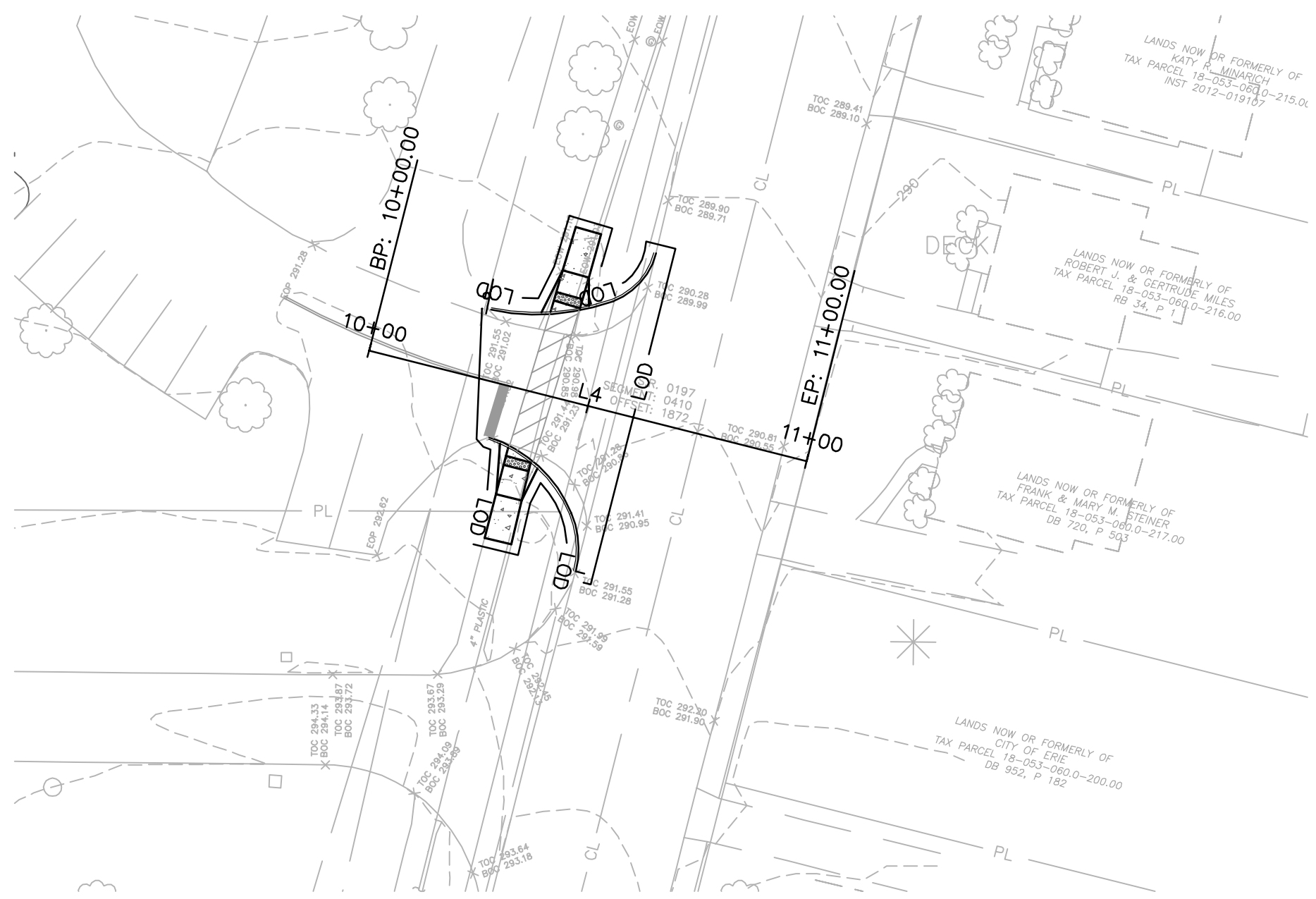
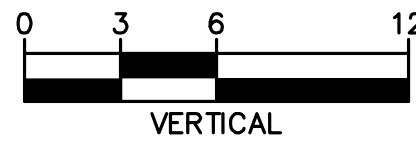
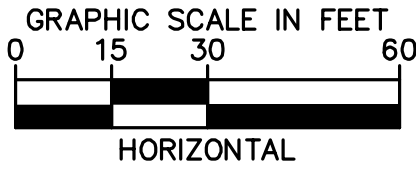
ACCESS B PLAN VIEW
SCALE: 1" = 30'



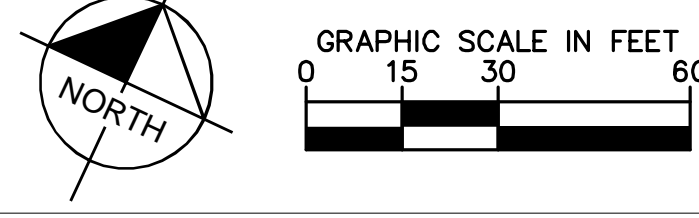
LINE TABLE		
LINE	LENGTH	BEARING
L3	100.00	N65°39'54.69"E



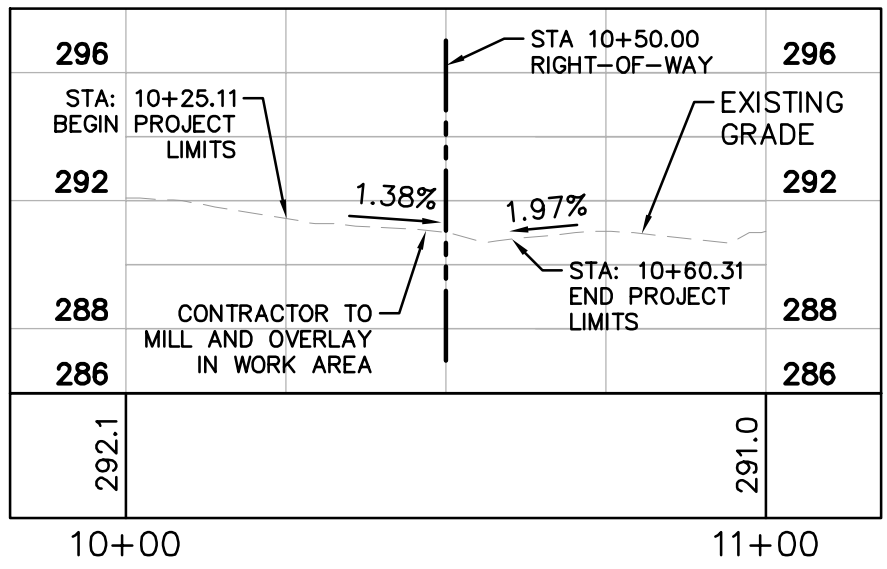
ACCESS B PROFILE VIEW
HORIZONTAL SCALE: 1" = 30' VERTICAL SCALE: 1" = 6'



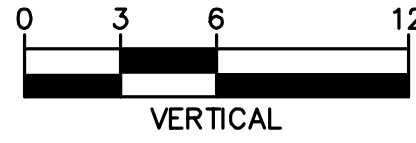
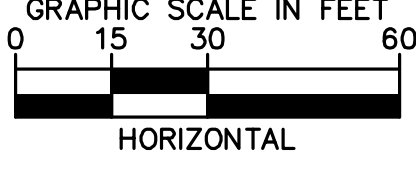
ACCESS C PLAN VIEW
SCALE: 1" = 30'



LINE TABLE		
LINE	LENGTH	BEARING
L4	100.00	N79°06'10.15"E



ACCESS C PROFILE VIEW
HORIZONTAL SCALE: 1" = 30' VERTICAL SCALE: 1" = 6'



UPDATE FOR CONSTRUCTION	05/16/2016
UPDATE FOR CONSTRUCTION	10/21/2015
UPDATE FOR CONSTRUCTION	09/15/2015
REV PER PENNDOT COMMENTS	07/17/2015
REV PER PENNDOT COMMENTS	02/13/2015
REV PER PENNDOT COMMENTS	08/19/2014
REV PER PENNDOT COMMENTS	05/21/2014
Revisions:	Date

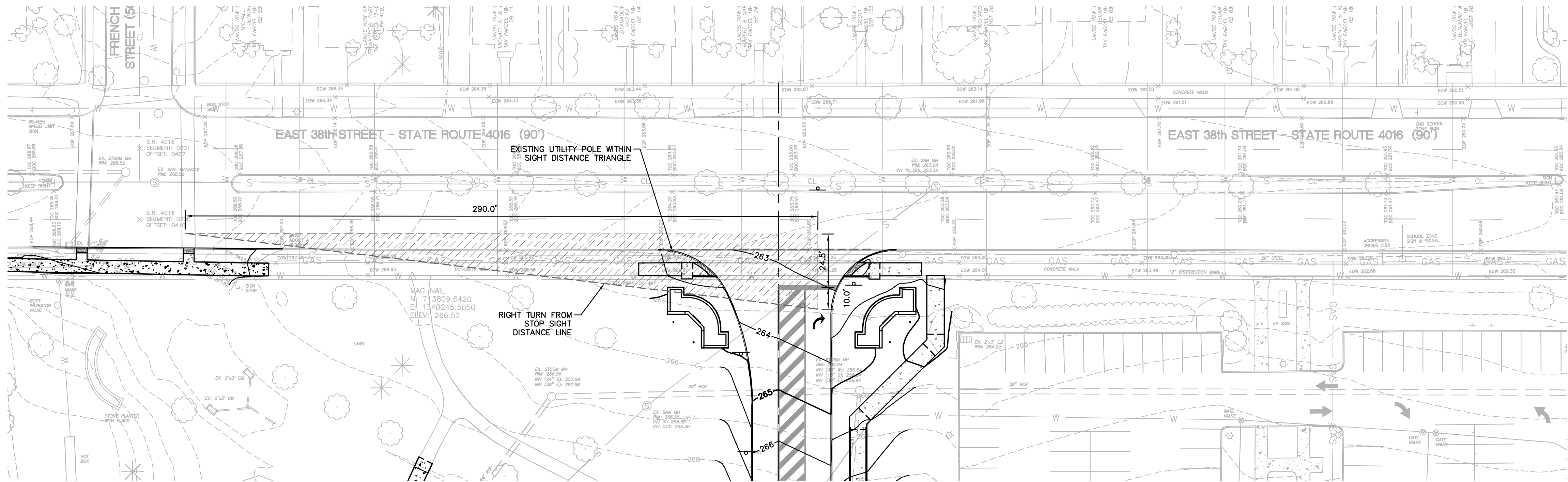
ARCHITECT/ENGINEER:		
Kimley»Horn	Civil	Transportation
	Kimley-Horn and Associates, Inc. 11400 Commerce Park Drive Suite 400 Reston, VA 20191 Phone: (703) 674-1300 Fax: (703) 674-1350	Traffic Analysis & Design, Inc. N36 W7505 Buchanan Court Cedarburg, WI 53012 Phone: (262) 377-1845
	Survey	
	Rabell Surveying & Engineering 10560 Walnut Street Albion, Pennsylvania 16401 Phone: (814) 756-4384 Fax: (814) 756-5638	



Drawing Title	
OLD FRENCH ROAD PLAN AND PROFILE	
Project Title	
IMPROVED TRAFFIC FLOW - ENGINEERING DESIGN	
Location	
ERIE, PA	
Date	10/21/2015
Checked	SW
Drawn	KB

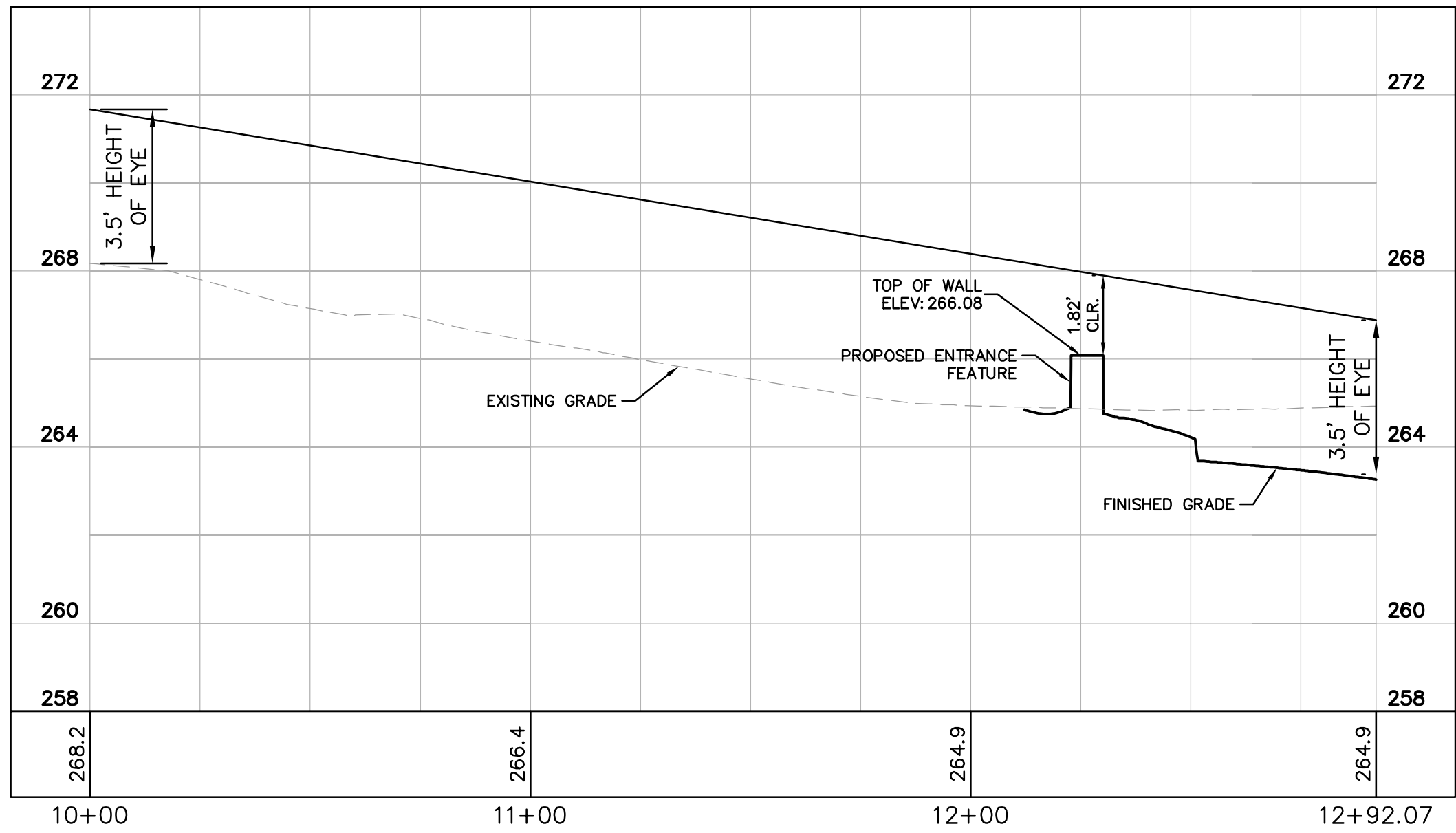
Project Number	562-12-107
Building Number	N/A
Drawing Number	C-330
Dwg.	9 of 32





ENTRANCE SIGHT DISTANCE PLAN
SCALE: 1" = 30'

LEGEND	
	EX. MAJOR CONTOUR
	EX. MINOR CONTOUR
	EX. UNDERGROUND WATERLINE
	EX. UNDERGROUND SANITARY SEWER
	EX. UNDERGROUND NATURAL GAS
	EX. UNDERGROUND STORM SEWER
	EX. UNDERGROUND ELECTRICAL LINE
	EX. FENCE
	ROAD CENTERLINE
	STORM INLET
	SEWER MANHOLE
	GATE VALVE
	SIGN
	LIGHT POLE
	FIRE HYDRANT
	EX. TREE
	LIMITS OF DISTURBANCE
	MAJOR CONTOUR
	MINOR CONTOUR
	CONCRETE SIDEWALK
	RELOCATED SIGN
	SIGHT DISTANCE TRIANGLE



ENTRANCE SIGHT DISTANCE PROFILE - RIGHT TURN FROM STOP
SCALE (H): 1" = 30' SCALE (V): 1"=3'

UPDATE FOR CONSTRUCTION	05/16/2016
UPDATE FOR CONSTRUCTION	10/21/2015
UPDATE FOR CONSTRUCTION	09/15/2015
REV PER PENNDOT COMMENTS	07/17/2015
REV PER PENNDOT COMMENTS	02/13/2015
REV PER PENNDOT COMMENTS	08/19/2014
REV PER PENNDOT COMMENTS	05/21/2014
Revisions:	Date

ARCHITECT/ENGINEER:

Kimley»Horn

Civil

Kimley-Horn and Associates, Inc.
11400 Commerce Park Drive
Suite 400
Reston, VA 20191
Phone: (703) 674-1300
Fax: (703) 674-1350



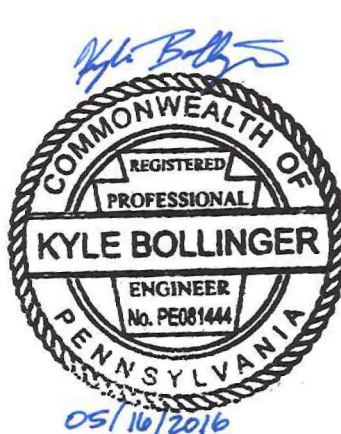
Transportation

Traffic Analysis & Design, Inc.
N36 W7505 Buchanan Court
Cedarburg, WI 53012
Phone: (262) 377-1845



Survey

Rabell Surveying & Engineering
10560 Walnut Street
Albion, Pennsylvania 16401
Phone: (814) 756-4384
Fax: (814) 756-5638



Drawing Title
**DRIVEWAY SIGHT DISTANCE
PLAN**

Project Title
**IMPROVED TRAFFIC FLOW -
ENGINEERING DESIGN**

Location
ERIE, PA

Date
10/21/2015

Checked
SW

Drawn
KB

Project Number
562-12-107

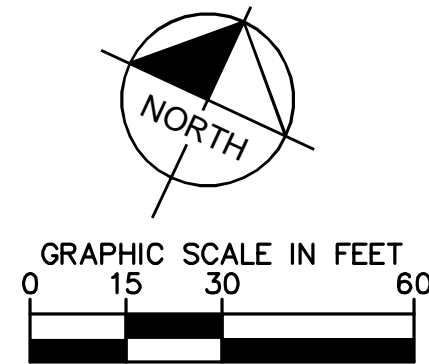
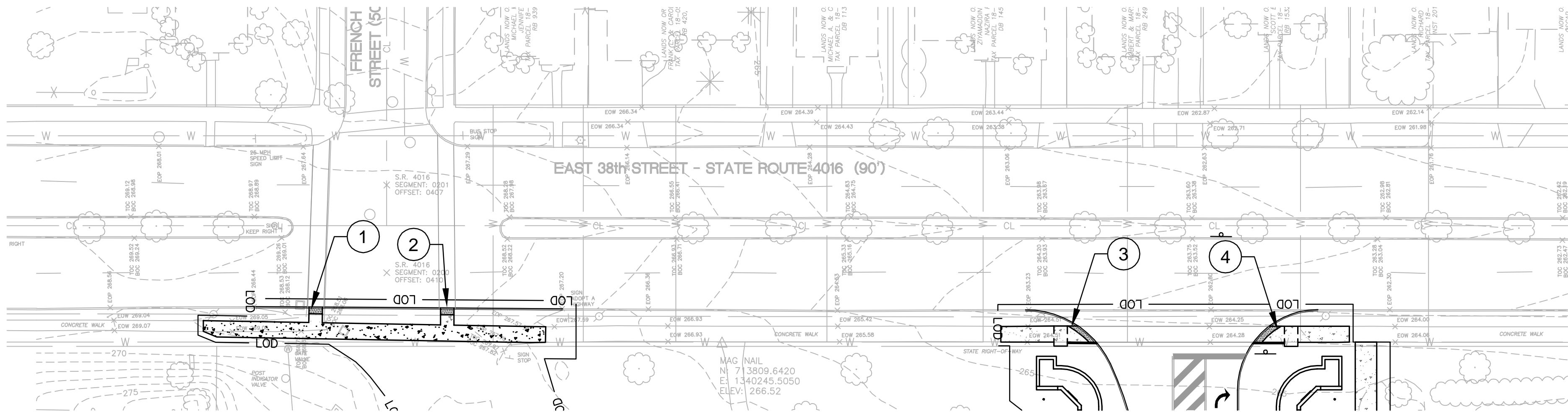
Building Number
N/A

Drawing Number
C-340

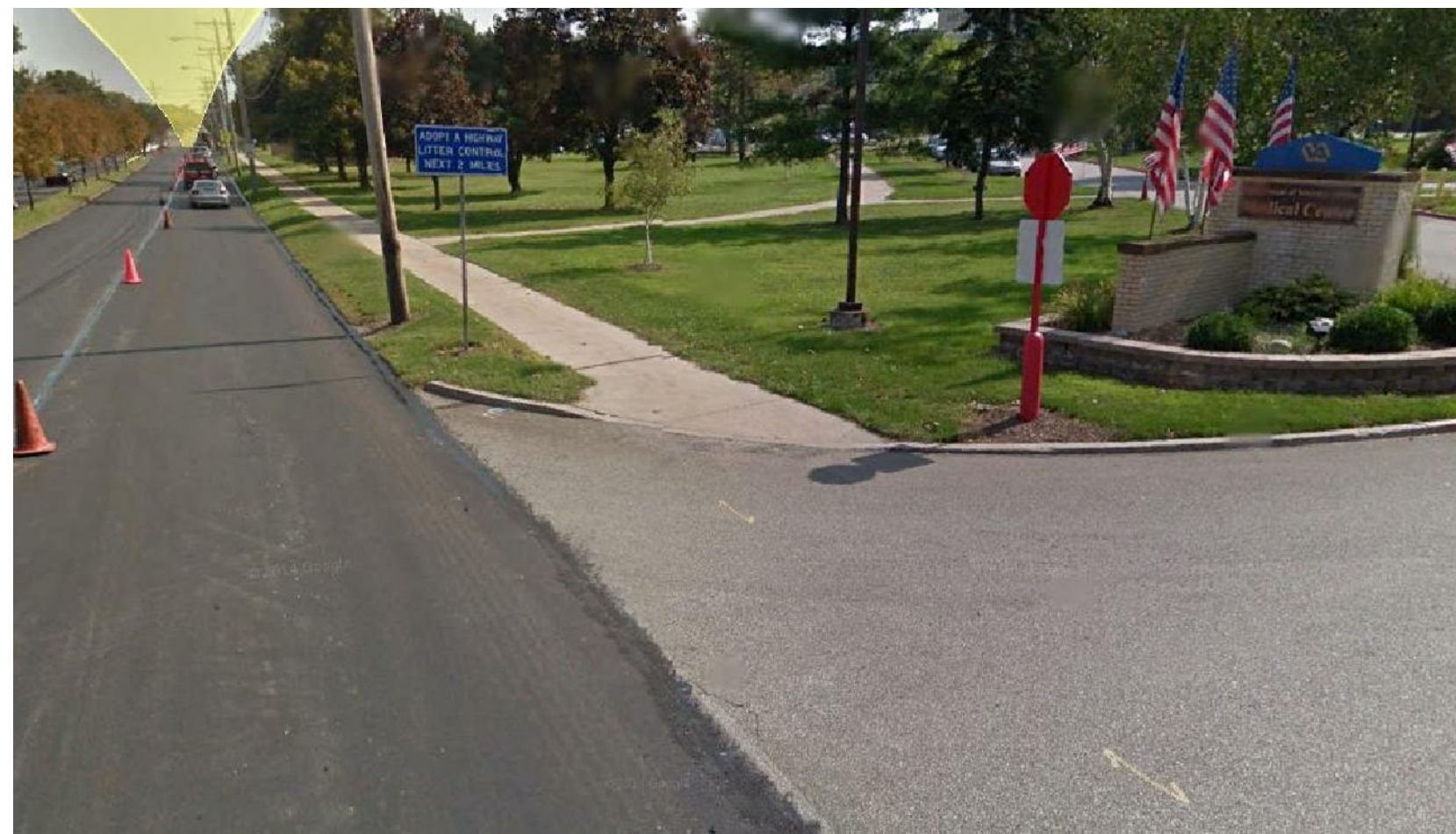
Dwg. 10 of 32

Office of
Construction
and Facilities
Management

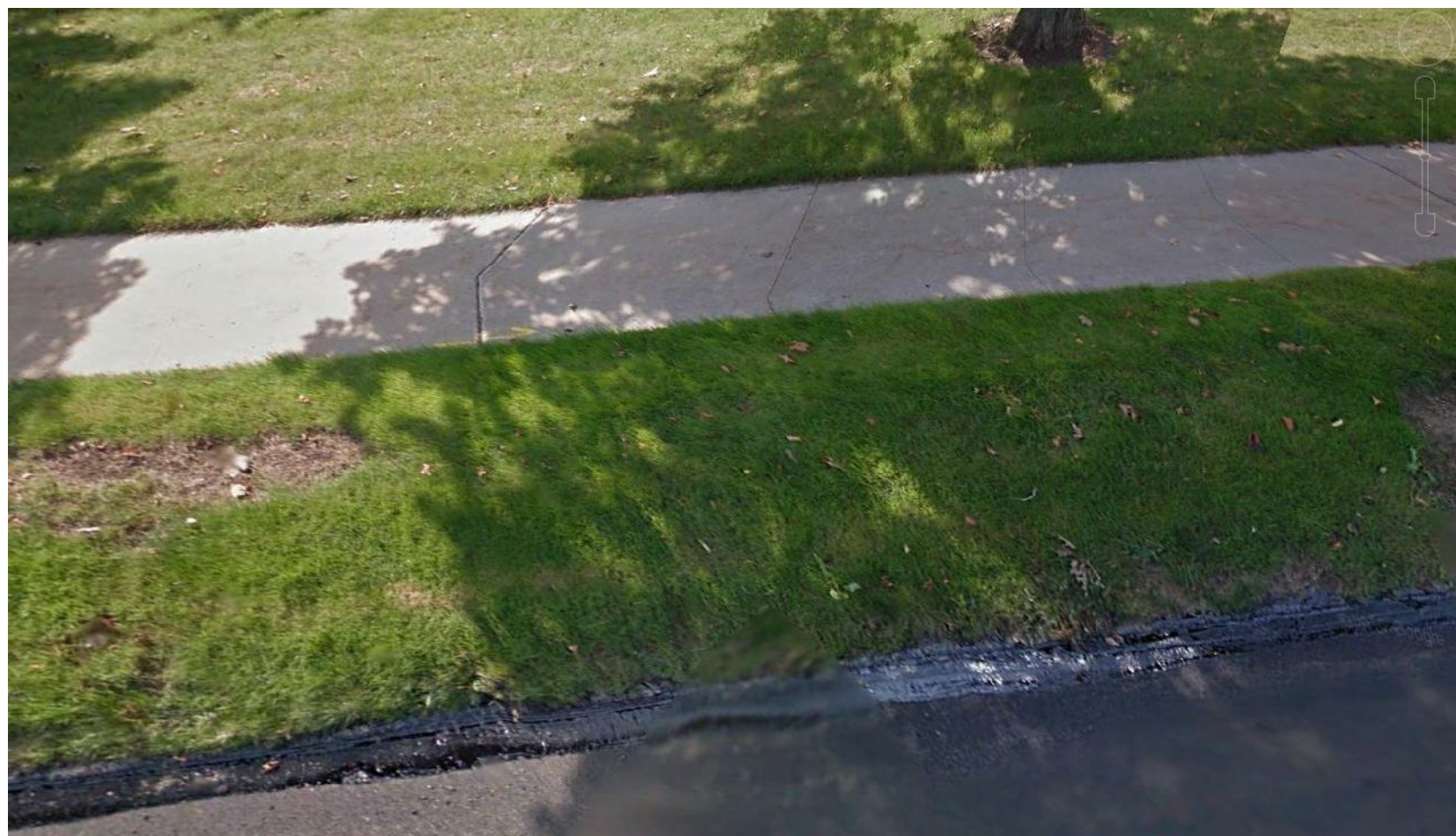




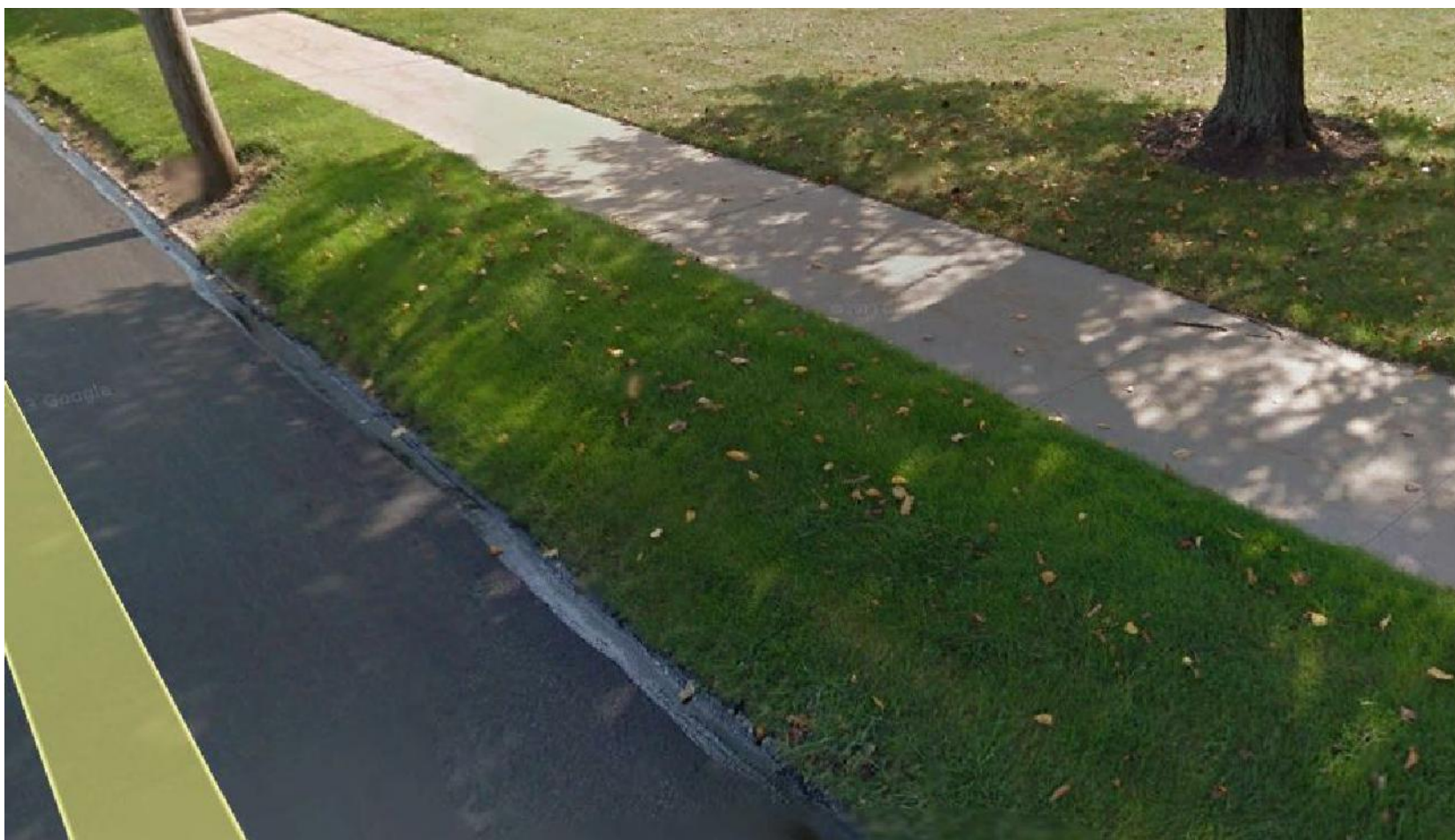
1 SW CORNER OF REMOVED ENTRANCE



2 SE CORNER OF REMOVED ENTRANCE



3 SW CORNER OF PROPOSED ENTRANCE



4 SE CORNER OF PROPOSED ENTRANCE

ARCHITECT/ENGINEER:		<div><div><div>Civil</div><div>Kimley-Horn and Associates, Inc.</div><div><div><div><div></div><div>Kimley»Horn</div></div></div><div><div>11400 Commerce Park Drive Suite 400 Reston, VA 20191 Phone: (703) 674-1300 Fax: (703) 674-1350</div></div></div><div><div><div>TADI</div><div></div></div><div><div>N36 W7505 Buchanan Court Cedarburg, WI 53012 Phone: (262) 377-1845</div></div></div><div><div><div>RABELL</div><div>Surveying & Engineering, LLC</div></div><div><div>10560 Walnut Street Albion, Pennsylvania 16401 Phone: (814) 756-4384 Fax: (814) 756-5638</div></div></div></div><div><div><div><div>COMMONWEALTH OF PENNSYLVANIA</div><div>REGISTERED PROFESSIONAL ENGINEER No. 102844</div><div><div><div></div><div>Kyle Bollinger</div></div><div>05/10/2016</div></div></div></div><div><div>Drawing Title</div><div>CURB RAMP PHOTO EXHIBIT</div><div></div></div><div><div><div>Project Title</div><div>IMPROVED TRAFFIC FLOW - ENGINEERING DESIGN</div></div><div><div>Location</div><div>ERIE, PA</div></div><div><div>Date</div><div>10/21/2015</div></div><div><div>Checked</div><div>SW</div></div><div><div>Drawn</div><div>KB</div></div></div><div><div><div>Project Number</div><div>562-12-107</div></div><div><div>Building Number</div><div>N/A</div></div><div><div>Drawing Number</div><div>C-350</div></div><div><div>Dwg.</div><div>11 of 32</div></div></div><div><div>Office of Construction and Facilities Management</div><div><div></div><div>Department of Veterans Affairs</div></div></div></div></div>	
---------------------	--	--	--

