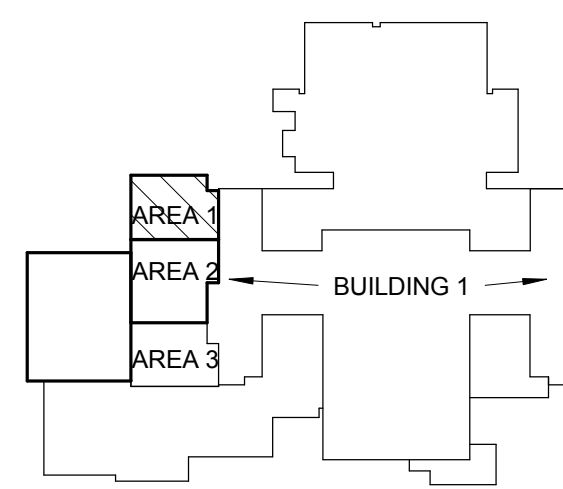
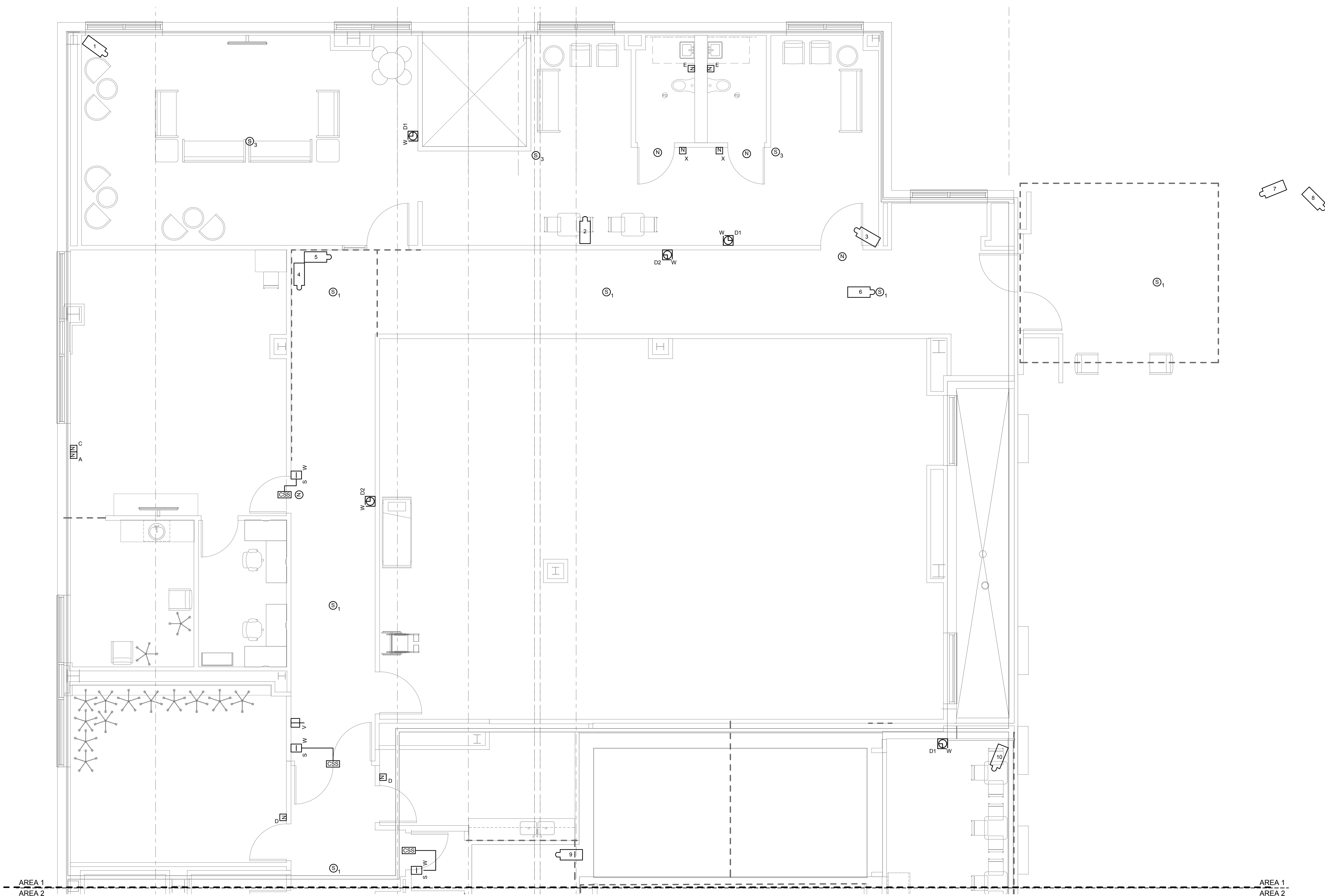


one eighth inch = one foot  
one quarter inch = one foot  
three eighths inch = one foot  
one half inch = one foot  
three quarters inch = one foot  
one inch = one foot  
one and one half inches = one foot  
three inches = one foot  
6"

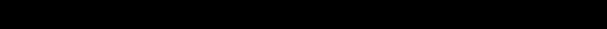

- GENERAL SHEET NOTES**
- ALL NURSE CALL DEVICES, ACCESS CONTROL DEVICES, VIDEO SURVEILLANCE CAMERAS, AND PAGING SPEAKERS IN THIS AREA SERVED FROM SC-HG-1 TELECOM ROOM G320. REFER TO UT-0104 FOR LOCATION OF SC-HG-1 TELECOM ROOM G320.
  - REFER TO ARCHITECTURAL ELEVATIONS FOR PRECISE SYSTEM DEVICE LOCATIONS.



KEY PLAN - NOT TO SCALE

FULLY SPRINKLERED  
CONSTRUCTION DOCUMENTS

**2 THIRD FLOOR - TECHNOLOGY - SYSTEMS - AREA 1**  
1/4" = 1'-0"

			<b>CONSULTANTS:</b>						<b>ARCHITECT/ENGINEERS:</b>			<b>Drawing Title</b>			<b>Project Title</b>			<b>Project Number</b>			<b>Office of Construction and Facilities Management</b>																																																																																																																																																																																																																																																																																																																																																																																																																																																																																																																																																																																																																																																																																																																																																																																																																																																																																																																																																																																																																																																																																																																																																																																																																																																																																																																				
			STRUCTURAL ENGINEER: KPFF CONSULTING ENGINEERS - ST. LOUIS 1630 DES PERES RD, SUITE 100 SAINT LOUIS, MO 63131			PLUMBING: 303RD ENGINEERING GROUP, LLC 1935 ARSENAL STREET ST. LOUIS, MO 63118			LIFE SAFETY/FIRE PROTECTION: CODE CONSULTANTS, INC. 2043 WOODLAND PARKWAY, SUITE 300 ST. LOUIS, MO 63146						THIRD FLOOR - TECHNOLOGY - SYSTEMS - AREA 1			INTENSIVE CARE UNIT						589-330																																																																																																																																																																																																																																																																																																																																																																																																																																																																																																																																																																																																																																																																																																																																																																																																																																																																																																																																																																																																																																																																																																																																																																																																																																																																																																																	
			MECHANICAL/ELECTRICAL: KJWW ENGINEERING CONSULTANTS - ST. LOUIS #15 SUNNEN DRIVE, SUITE 104 ST. LOUIS, MO 63141			ESTIMATING: KWAME BUILDING GROUP 1204 WASHINGTON AVE. SUITE 200 ST. LOUIS, MO 63103			ACOUSTICAL ENGINEERS: ACOUSTICCONTROL, LLC 1709 WASHINGTON AVENUE, LOFT 300 ST. LOUIS, MO 63103			COMMISSIONING: ZODIAC INTERNATIONAL 16100 CHESTERFIELD PARKWAY, SUITE 365 CHESTERFIELD, MO 63017						THE SEAL (S) AND SIGNATURE(S) APPLY ONLY TO THE DOCUMENT TO WHICH THEY ARE AFFIXED, AND WE EXPRESSLY DISCLAIM ANY RESPONSIBILITY FOR ALL OTHER PLANS, SPECIFICATIONS, ESTIMATES, REPORTS, OR OTHER DOCUMENTS OR INSTRUMENTS RELATING TO OR INTENDED TO BE USED FOR ANY PART OF PARTS OF THE PROJECT. © COPYRIGHT 2012 CHRISTNER INC.									Building Number <b>#1</b>																																																																																																																																																																																																																																																																																																																																																																																																																																																																																																																																																																																																																																																																																																																																																																																																																																																																																																																																																																																																																																																																																																																																																																																																																																																																																																														
												Location <b>HARRY S. TRUMAN VAMC</b>																		Drawing Number <b>TS102</b>																																																																																																																																																																																																																																																																																																																																																																																																																																																																																																																																																																																																																																																																																																																																																																																																																																																																																																																																																																																																																																																																																																																																																																																																																																																																																																											
															DIRECTOR OF SPECIALTY CARE			INFECTION CONTROL PRACTITIONER			CHIEF ENGINEER			ASSISTANT DIRECTOR			ASSOCIATE DIRECTOR OF PATIENT SERVICES			CHIEF OF STAFF			ASSOCIATE DIRECTOR			MEDICAL CENTER DIRECTOR			Date <b>08/22/2014</b>			Checked <b>MARWIT</b>			Drawn <b>DAVLAR</b>			Approved <b>DAVROU</b>			Dwg. 278 of 296																																																																																																																																																																																																																																																																																																																																																																																																																																																																																																																																																																																																																																																																																																																																																																																																																																																																																																																																																																																																																																																																																																																																																																																																																																																																																						
<b>No.</b>			<b>Date</b>			<b>Revisions</b>									ARCHITECTS   DESIGNERS   PLANNERS   LANDSCAPE ARCHITECTS			198 N. MERAMEC, SUITE 400   ST. LOUIS, MISSOURI 63105 TEL 314 725 2927   FAX 314 725 2929   CHRISTNERINC.COM																																																																																																																																																																																																																																																																																																																																																																																																																																																																																																																																																																																																																																																																																																																																																																																																																																																																																																																																																																																																																																																																																																																																																																																																																																																																																																																							