

F

6.30 = 162

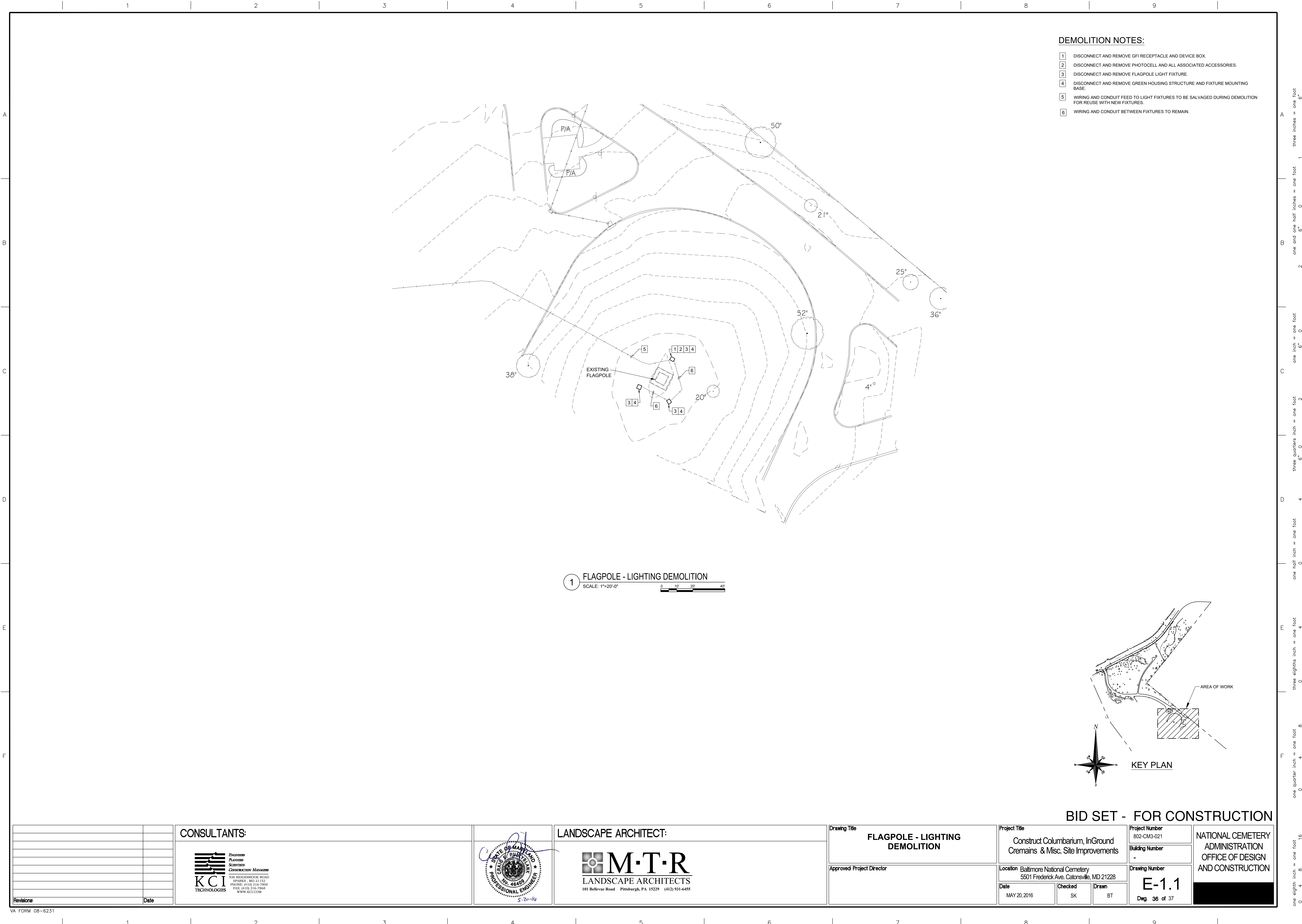
6**F**

VA FORM 08-6231

one eighth inch = one foot one quarter inch = one foot three eighths inch = one foot

0 4 8 16 0 4 8 0 4

A-2013/27133563.14 Drawings Electrical/27133563.14, E01 Symbol, Abbreviation and general notes.dwg 5-17-16 04:08:39 PM william.hoffield



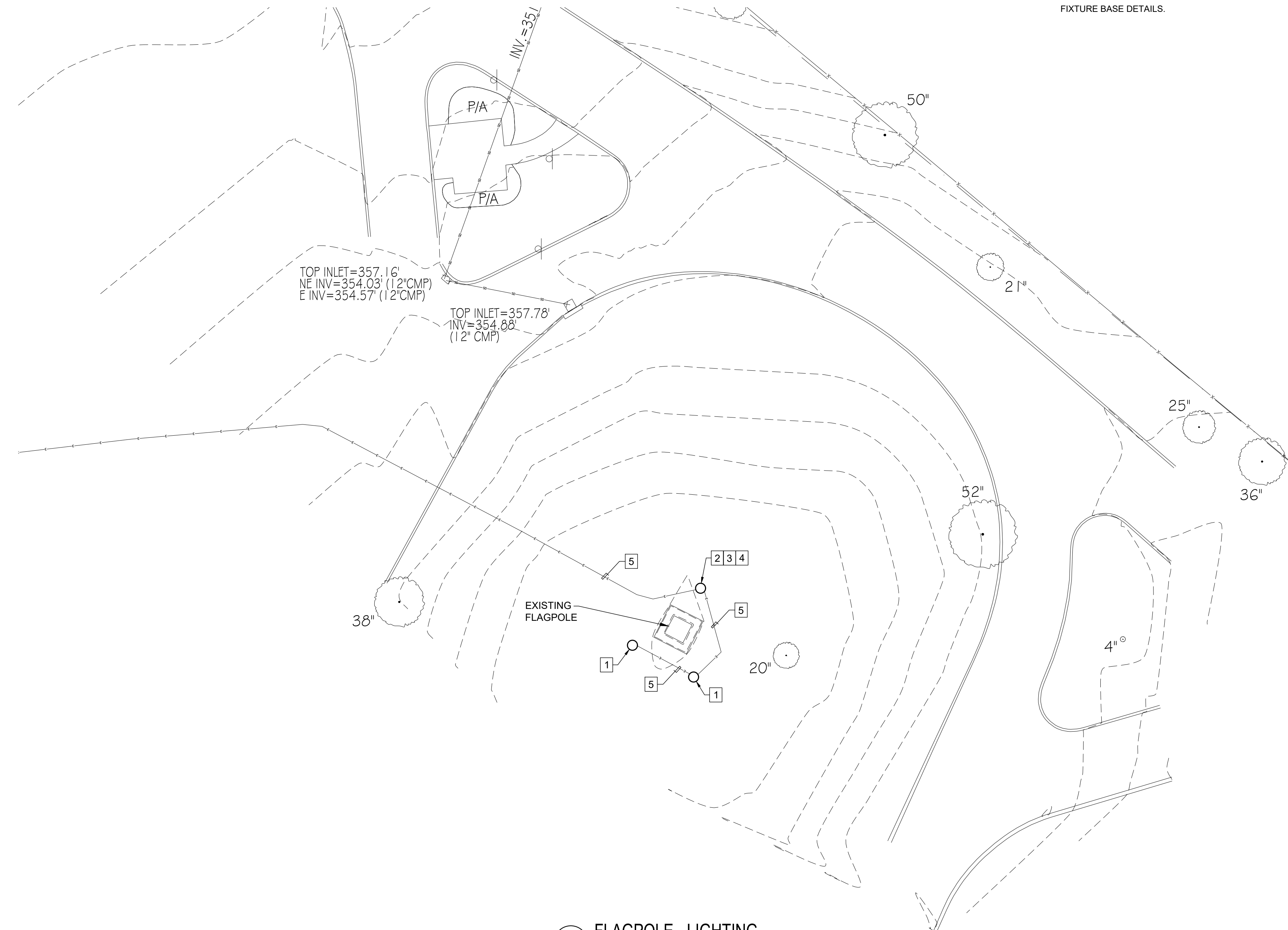
GENERAL NOTES

A. CONTRACTOR SHALL COORDINATE WITH OWNER AND LANDSCAPE ARCHITECT FOR FINAL AIMING OF LIGHT FIXTURES.

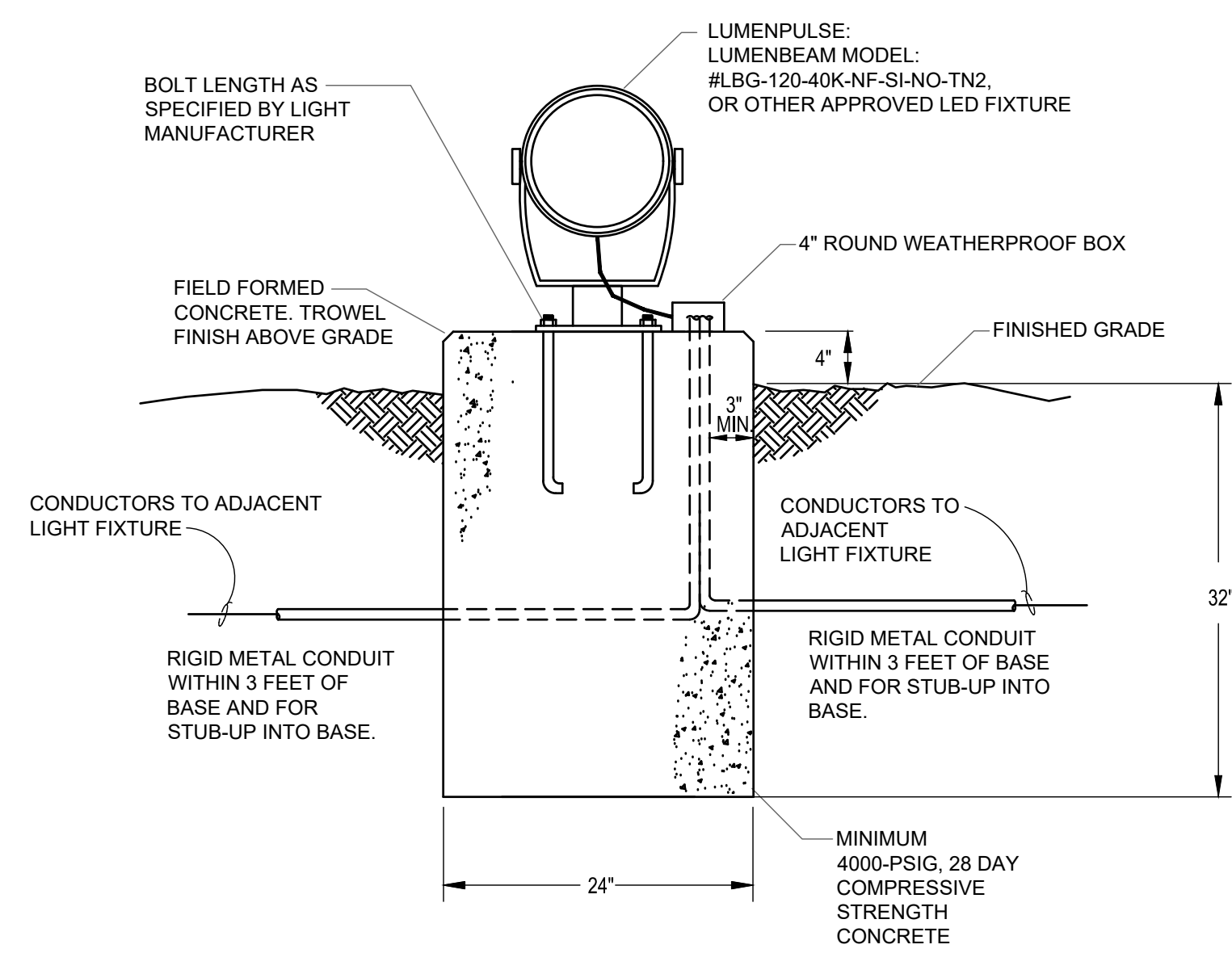
B. LIGHTING FIXTURE AND RECEPTACLE ENCLOSURE TYPES ARE FOUND ON
FIXTURE BASE DETAILS.

KEYED NOTES

- | | |
|---|--|
| 1 | REFER TO FIXTURE BASE DETAIL 'A' ON THIS DRAWING. PROVIDE LIGHT FIXTURE AS REQUIRED IN DETAIL. |
| 2 | REFER TO FIXTURE BASE DETAIL 'B' ON THIS DRAWING. PROVIDE LIGHT FIXTURE AS REQUIRED IN DETAIL. |
| 3 | GFI RECEPTACLE TO BE POWERED FROM EXISTING LIGHTING CIRCUIT. PROVIDE 2#12, 1H/2GRD. - 34°C. REWORK AND EXTEND EXISTING LIGHTING BRANCH CIRCUIT AS REQUIRED. |
| 4 | PROVIDE PHOTOCELL FOR CONTROL OF FLAGPOLE LIGHTS. MOUNT PHOTOCELL ON BACKSIDE OF RECEPTACLE HOUSING. |
| 5 | REUSE EXISTING WIRING AND CONDUIT. EXTEND WIRING AND CONDUIT AS NEEDED TO ACCOMMODATE NEW FIXTURE LOCATION. TRACE CIRCUIT BACK TO SOURCE. VERIFY THAT THE EXISTING BRANCH CIRCUIT BREAKER AND WIRING ARE IN GOOD WORKING ORDER. LABEL EXISTING BRANCH CIRCUIT BREAKER IN EXISTING PANELBOARD WITH NEW DESIGNATION. |

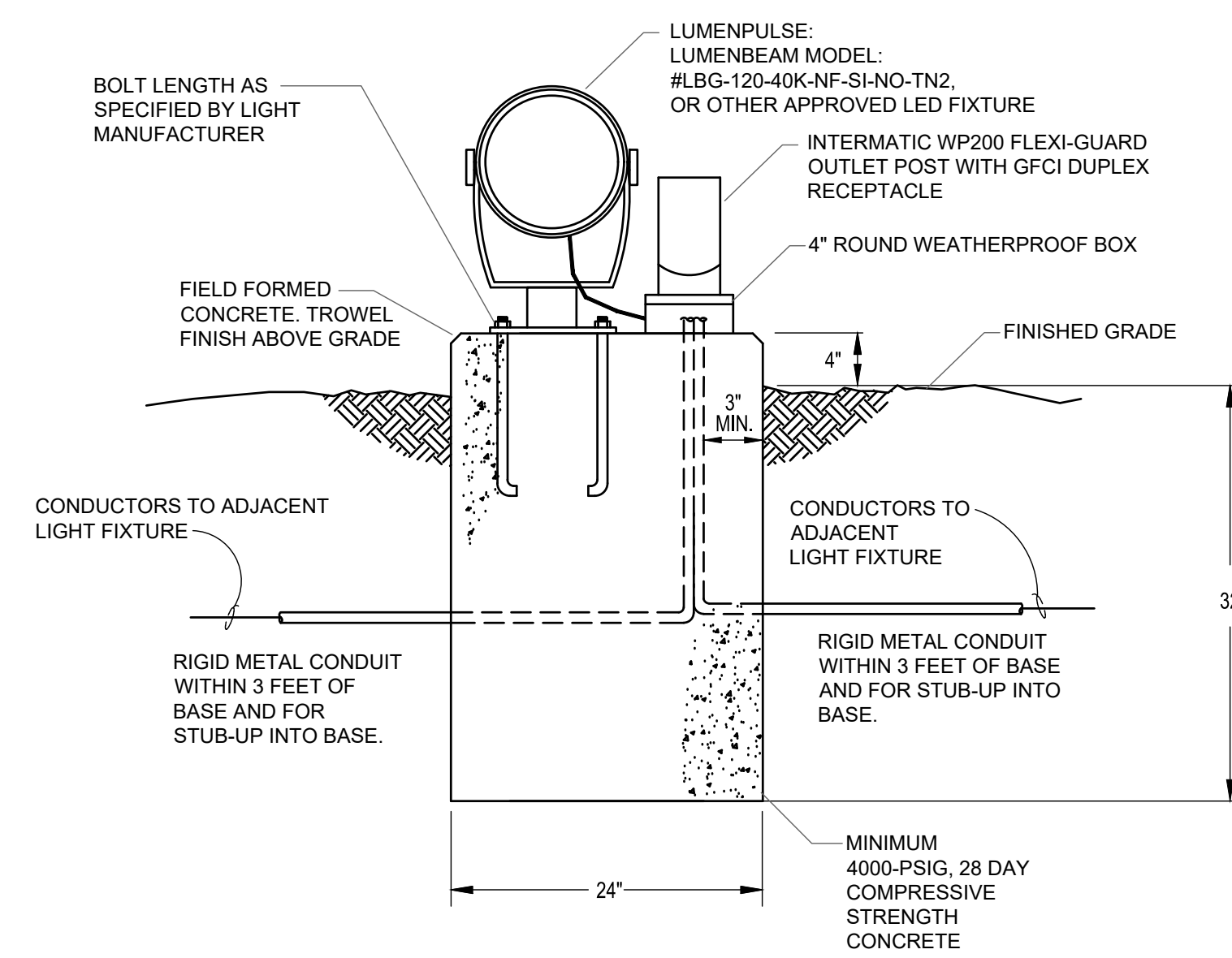


1 FLAGPOLE - LIGHTING

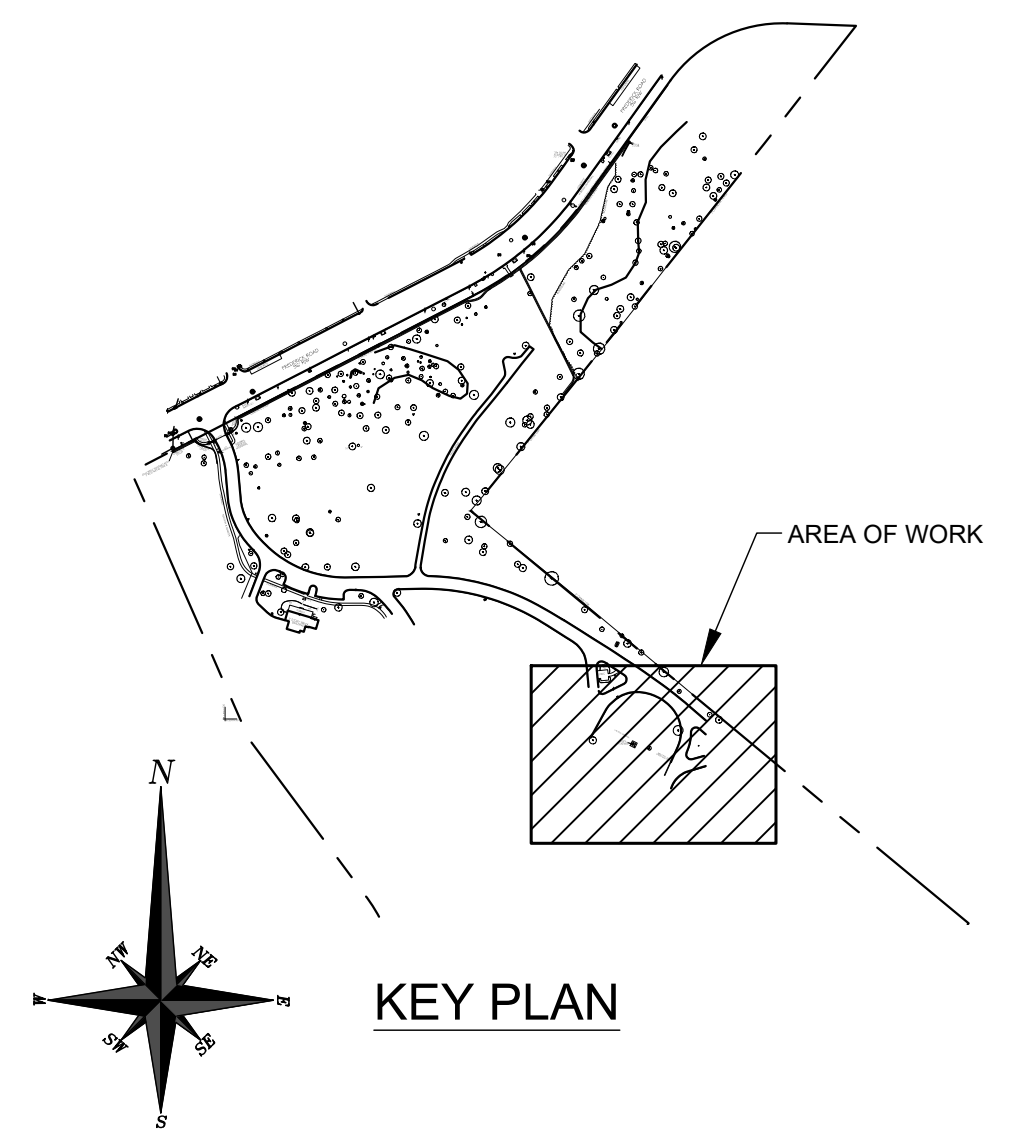


FIXTURE BASE DETAIL 'A'

NO SCALE



FIXTURE BASE DETAIL 'B'
NO SCALE



BID SET - FOR CONSTRUCTION

[illegible]