

REQUEST FOR BID PROPOSAL  
FOR  
PROJECT 459-15-101  
INSTALL HVAC AND POWER IN ELECTRICAL ROOMS,  
LABORATORY, AND EMERGENCY POWER  
TRIPLER AMC/ DEPT. OF VETERAN AFFAIRS

ADDENDUM NO. 2

26 JULY 2016

The items listed hereinafter are hereby made a part of the contract for the above project and shall govern the work, taking precedence over previously issued plans and specifications governing the items mentioned:

**A. DRAWINGS**

Revised attached 30"x42" drawing E1-01 – Roof Electrical Plan. Revised Roof Plan to include existing photovoltaic panels; revised location of ACCU-2 accordingly.

END OF ADDENDUM NO. 2



ADDENDUM 2

INSTALL HVAC AND POWER IN ELECTRICAL ROOMS,  
LABORATORY, AND EMERGENCY POWER  
TRIPLER AMC

three inches = one foot  
one and one half inches = one foot  
one inch = one foot  
three quarters inch = one foot  
one half inch = one foot  
three eighths inch = one foot  
one quarter inch = one foot  
one eighth inch = one foot

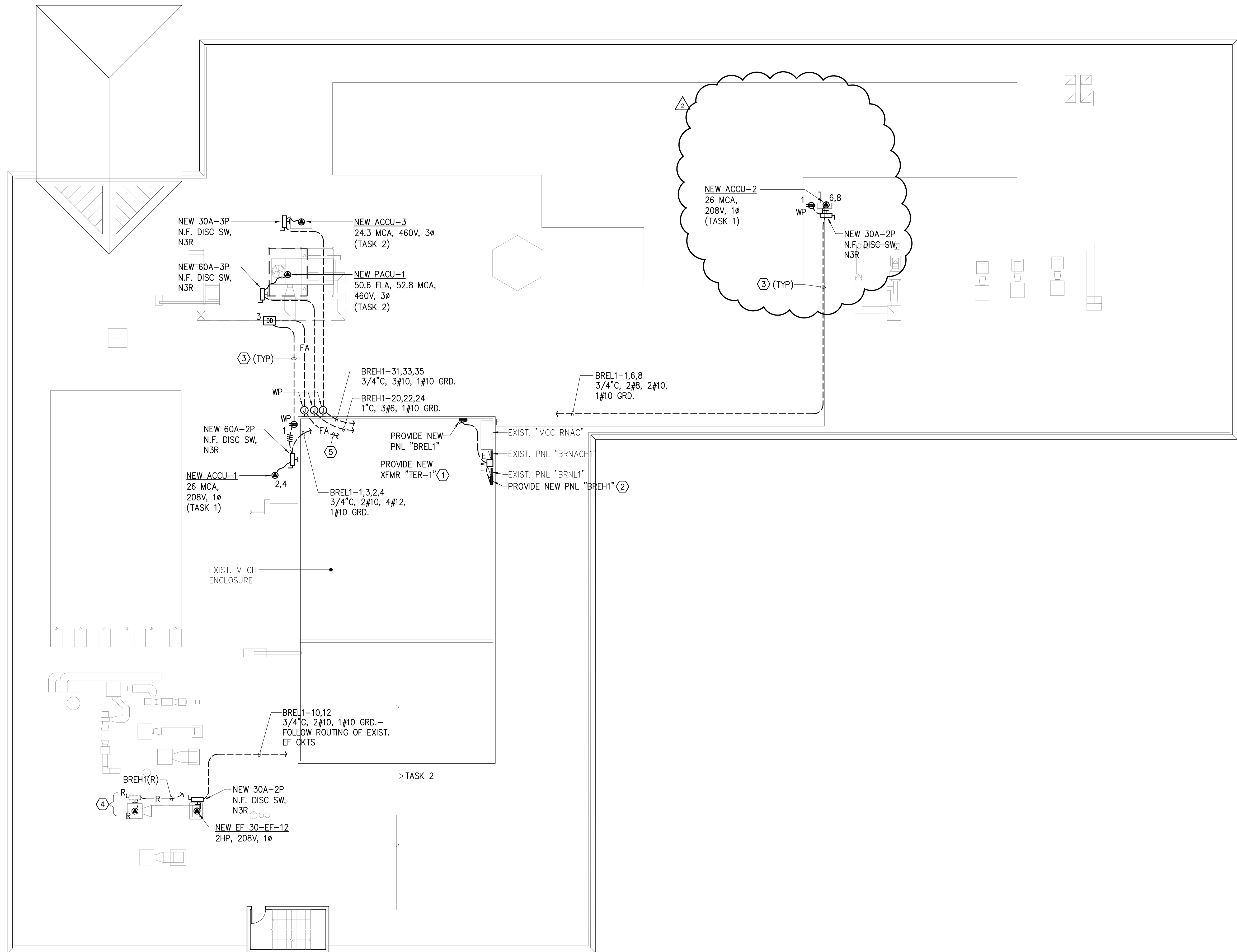
X:\S - ZIVA Hospital ACC Ren\Tasks 1&2\WH-ACC-Ren-E-101.dwg 7-22-16 11:23:04 AM Rtlash

PLAN NOTES:

- 1 MOUNT NEW XFMR "TER-1" ON UNISTRUT FRAME ABOVE EXISTING XFMR "TBR-1". SEE  E-200
- 2 NEW PNL "BREH1" TO REPLACE EXISTING PNL "BREH1".
- 3 RUN NEW ROOFTOP CONDUITS ON CONDUIT BLOCK SUPPORTS ACROSS TOP OF ROOF. SEE  E-200

CONTRACTOR TO DETERMINE EXACT ROUTING OF CONDUIT AND QUANTITY/SPACING OF MOUNTS. SUBMIT PROPOSED LAYOUT TO ARCHITECT AND OWNER FOR REVIEW.

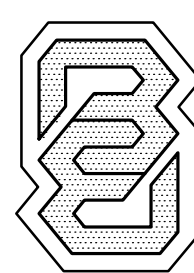
- 4 REMOVE EXISTING CIRCUIT, DISCONNECT, AND CONNECTION TO EXISTING 30-EF-12.
- 5 TO NEAREST F.A. DEVICE. CONNECT TO EXISTING ZONE FOR DUCT DETECTOR SUPERVISORY SIGNAL NOTIFICATION.



ROOF ELECTRICAL PLAN

SCALE: 3 / 32" = 1' - 0"

CONSULTANTS:

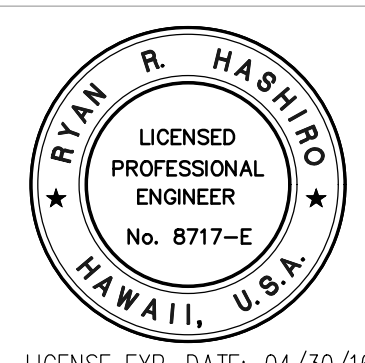


**BENNETT ENGINEERS INC.**

765 AMANA STREET, SUITE 201 HONOLULU, HAWAII 96814  
PH. (808) 955-8565 FAX (808) 955-8566  
EMAIL: BEI@HAWAIIANTEL.BIZ

*Ryan R. Hashido*  
THIS WORK WAS PREPARED BY ME  
OR UNDER MY SUPERVISION AND  
CONSTRUCTION OF THIS PROJECT  
WILL BE UNDER MY OBSERVATION

BENNETT ENGINEERS INC.



LICENSE EXP. DATE: 04/30/16

ARCHITECT/ENGINEERS:



FERRARO CHOI AND ASSOCIATES LTD  
ARCHITECTURE / INTERIOR ARCHITECTURE / RESEARCH  
1240 ALA MOANA BLVD, STE 310, HONOLULU, HI 96816  
TEL 808 532 8880 FAX 808 539 3769 www.ferrarochoi.com

SIGNATURE EXPIRATION OF LICENSE  
THIS WORK WAS PREPARED BY ME OR  
UNDER MY SUPERVISION AND I AM A  
LICENSED PROFESSIONAL ENGINEER IN THE  
STATE OF HAWAII. I HEREBY CERTIFY TO  
THE DEPARTMENT OF COMMERCE AND CON-

Drawing Title  
**ROOF ELECTRICAL PLAN**

Approved Project Director

VAPAHCs PLANNING AND ENGINEERING

FINAL DESIGN SUBMISSION

Drawing Title  
VA PACIFIC ISLAND  
HEALTH CARE SYSTEM  
ARCHITECT/ENGINEER (NE) IDIO

Location  
ACC BUILDING, VAMROC, HONOLULU, HI

Date  
10/23/2015

Checked  
RA

Drawn  
RH

Project Number  
459-15-101

Building Number  
--

Drawing Number  
**E-101**

Dwg -- of --

Office of  
Construction  
and Facilities  
Management

Department of  
Veterans Affairs