

VETERANS ADMINISTRATION  
MEDICAL CENTER  
PACIFIC ISLANDS

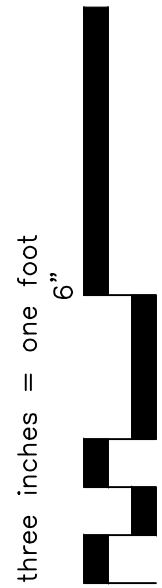
ACCESS CONTROL SYSTEM, INTRUSION  
DETECTION SYSTEM, IP VIDEO SURVEILLANCE  
& INTERCOM SYSTEM ADDITIONS



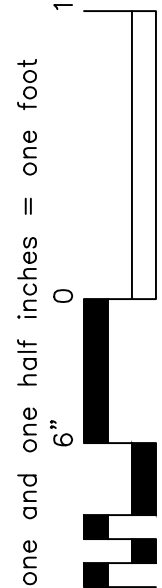
STANLEY SECURITY SOLUTIONS  
805 15TH STREET, NW, SUITE 710  
WASHINGTON DC 20005

<div>Revisions</div>	<div>Date</div>	<div>15292</div>	<div>Professional Seal</div>	<div>Drawing Title</div> <div>COVER SHEET</div>		<div>Project Title</div> <div>VA MEDICAL CENTER PACIFIC ISLANDS</div>			<div>Date</div> <div>04-04-2016</div>	<div>VAMC, PACIFIC ISLANDS</div>	<div>Department of Veterance Affairs</div>	
				<div>Site:</div>		<div>Building:</div>	<div>Drawn:</div>	<div>Checked:</div>	<div>Approved:</div>			<div>Project No.</div>
				<div>Location:</div> <div>VAMC, PACIFIC ISLANDS</div>		<div>Approved:</div>		<div>Scale:</div> <div>NONE</div>	<div>Drawing No.</div> <div>T01</div>			

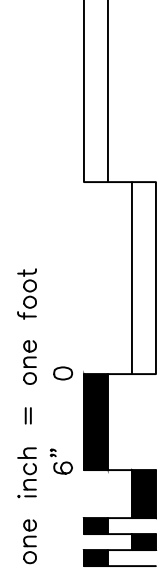
A



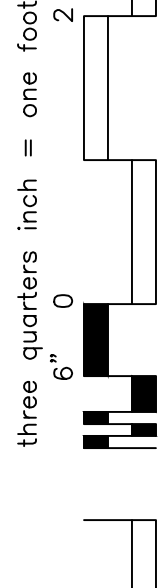
B



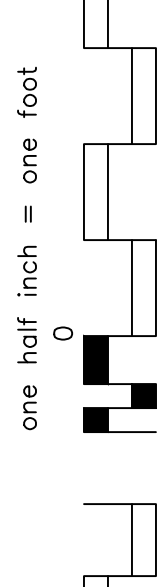
C



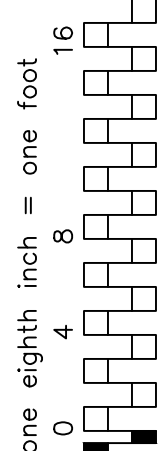
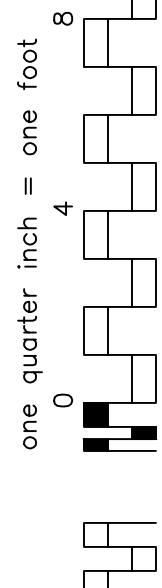
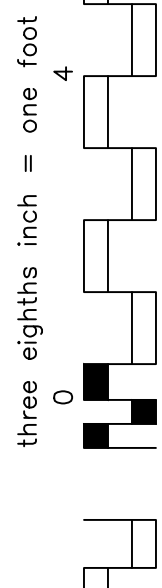
D



E



F



INDEX OF DRAWINGS		
	SHEET No.	SHEET TITLE
1	TD1	COVER SHEET
2	EY001	SYMBOL LEGEND, NOTES AND DRAWING INDEX
3	EY101	SPECIAL SYSTEMS PLAN - BLDG. ACC - 1ST FLOOR
4	EY102	SPECIAL SYSTEMS PLAN - BLDG. ACC - 2ND FLOOR
5	EY103	SPECIAL SYSTEMS PLAN - BLDG. ACC - 3RD FLOOR
6	EY104A	SPECIAL SYSTEMS PLAN - BLDG. E-WING - BASEMENT - AREA A
7	EY104B	SPECIAL SYSTEMS PLAN - BLDG. E-WING - BASEMENT - AREA B
8	EY105A	SPECIAL SYSTEMS PLAN - BLDG. E-WING - 1ST FLOOR - AREA A
9	EY105B	SPECIAL SYSTEMS PLAN - BLDG. E-WING - 1ST FLOOR - AREA B
10	EY106A	SPECIAL SYSTEMS PLAN - BLDG. E-WING - 2ND FLOOR - AREA A
11	EY106B	SPECIAL SYSTEMS PLAN - BLDG. E-WING - 2ND FLOOR - AREA B
12	EY107A	SPECIAL SYSTEMS PLAN - BLDG. E-WING - 3RD FLOOR - AREA A
13	EY107B	SPECIAL SYSTEMS PLAN - BLDG. E-WING - 3RD FLOOR - AREA B
14	EY108A	SPECIAL SYSTEMS PLAN - BLDG. E-WING - 4TH FLOOR - AREA A
15	EY108B	SPECIAL SYSTEMS PLAN - BLDG. E-WING - 4TH FLOOR - AREA B
16	EY109	SPECIAL SYSTEMS PLAN - CBOC - GUAM, LEEWARD, KONA
17	EY110A	SPECIAL SYSTEMS PLAN - BLDG. CFA - A-WING
18	EY110B	SPECIAL SYSTEMS PLAN - BLDG. CFA - B & C-WING
19	EY111	SPECIAL SYSTEMS PLAN - AIRPORT FACILITIES
20	EY801	ACCESS CONTROL DOOR SCHEDULE - BLDGS. ACC & E-WING
21	EY802	ACCESS CONTROL DOOR SCHEDULE - BLDG. CFA & CBOCS
22	EY803	CAMERA SCHEDULE
23		
24		
25		

LEGEND

- CR

CARD READER, MOUNT 42" AFF TO CENTER OF DEVICE, UON.
- CR<sub>K</sub>

CARD READER WITH KEYPAD, MOUNT 42" AFF TO CENTER OF DEVICE, UON.
- KP

ACCESS CONTROL SYSTEM ALARM KEYPAD
- SCP

SECURITY CONTROL PANEL
- DC

DOOR CONTACT
- RTE

REQUEST-TO-EXIT DEVICE
- 123

ACCESS CONTROL DOOR NOTE DESIGNATION
- ID

INTRUSION DETECTION SYSTEM MOTION SENSOR
- ML

MORTISE LOCK
- DS

ELECTRIC DOOR STRIKE
- PD

PANIC DURESS BUTTON
- CCTV

CCTV CAMERA
- CB

CRASH BAR DOOR RELEASE
- IC

INTERCOM STATION
- 1

NEW WORK NOTE
- MAG

MAGNETIC LOCK
- VIC<sub>M</sub>

VIDEO INTERCOM MASTER STATION
- VIC<sub>R</sub>

VIDEO INTERCOM REMOTE STATION

ABBREVIATIONS

- DEVICE SUBSCRIPTS:  

M

= MOUNT

T

= TECHNOLOGY/TYPE  
(SPECIFIC TO DEVICE)
- MOUNTING SUBSCRIPTS:  

M: C1 = CEILING  
C2 = CORNER  
D = DESK  
F = FLUSH  
P1 = POLE  
P2 = PEDESTAL

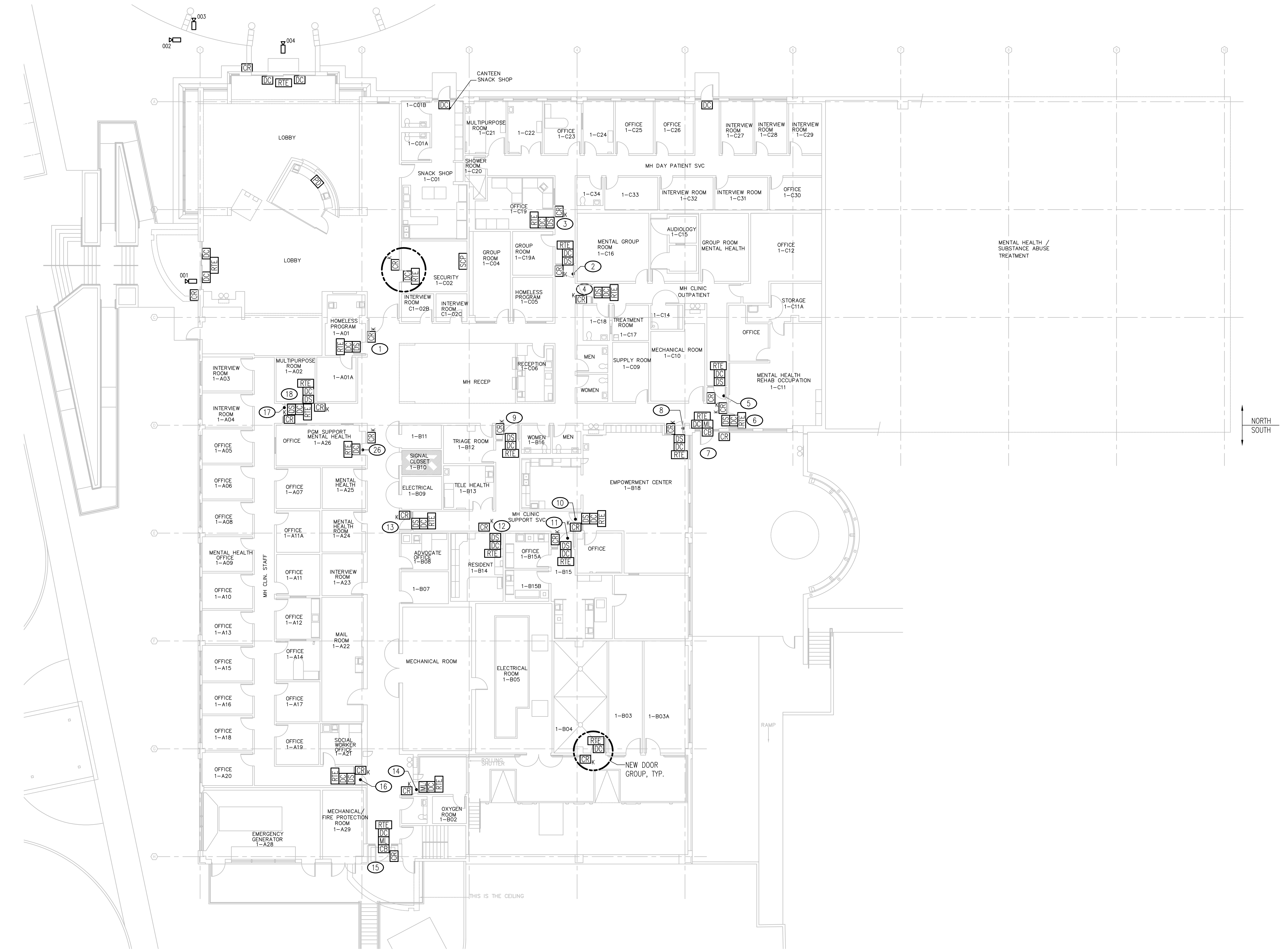
M = MULLION  
R = RACK  
S = SURFACE  
T = TURNSTILE  
W = WALL
- CAMERA SUBSCRIPTS:  

T: B = BOX  
D = DOME

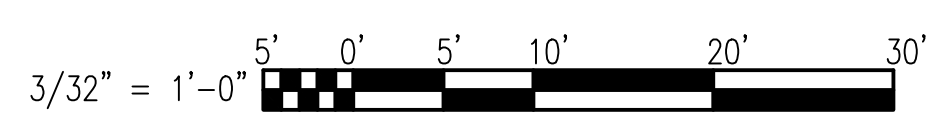
I = INDOOR  
O = OUTDOOR
- RECORDER SUBSCRIPTS:  

T: V = VIDEO  
A = AUDIO  
D = DIGITAL
- 
- Department of  
Veterance Affairs
- 
- |           |      |       |                   |  |  |                                      |           |                                      |          |           |            |             |  |  |  |  |  |
|-----------|------|-------|-------------------|--|--|--------------------------------------|-----------|--------------------------------------|----------|-----------|------------|-------------|--|--|--|--|--|
| Revisions | Date | 15292 | Professional Seal |  |  | Drawing Title                        |           | Project Title                        |          |           | Date       | Project No. |  |  |  |  |  |
|           |      |       |                   |  |  | SYMBOL LEGEND, NOTES & DRAWING INDEX |           | VA MEDICAL CENTER<br>PACIFIC ISLANDS |          |           | 04-04-2016 |             |  |  |  |  |  |
|           |      |       |                   |  |  | Site:                                | Building: | Drawn:                               | Checked: | Approved: |            | Drawing No. |  |  |  |  |  |
|           |      |       |                   |  |  | Location:                            |           | Approved:                            |          | Scale:    | EY001      |             |  |  |  |  |  |
|           |      |       |                   |  |  | VAMC, PACIFIC ISLANDS                |           |                                      |          | NONE      |            |             |  |  |  |  |  |

three inches = one foot  
one and one half inches = one foot  
one inch = one foot  
three quarters inch = one foot  
one half inch = one foot  
three eighths inch = one foot  
one quarter inch = one foot  
one eighth inch = one foot  
one eighth inch = one foot



**SPECIAL SYSTEMS PLAN - BLDG. ACC - 1ST FLOOR**  
SCALE: 3/32" = 1'-0"



		30% SUBMITTAL	15292	Professional Seal	Drawing Title SPECIAL SYSTEMS PLAN - BLDG. ACC - 1ST FLOOR		Project Title VA MEDICAL CENTER PACIFIC ISLANDS			Date 04-04-2016
					Site: HAWAII	Building: ACC	Drawn:	Checked:	Approved:	Project No.
Revisions		Date			Location: VAMC, PACIFIC ISLANDS		Approved:		Scale: AS NOTED	Drawing No. EY101

1  
2  
3  
4  
5  
6  
7  
8  
9  
10  
11  
12  
13  
14  
15  
16  
17  
18  
19  
20  
21  
22  
23  
24  
25  
26  
27  
28  
29  
30  
31  
32  
33  
34  
35  
36  
37  
38  
39  
40  
41  
42  
43  
44  
45  
46  
47  
48  
49  
50  
51  
52  
53  
54  
55  
56  
57  
58  
59  
60  
61  
62  
63  
64  
65  
66  
67  
68  
69  
70  
71  
72  
73  
74  
75  
76  
77  
78  
79  
80  
81  
82  
83  
84  
85  
86  
87  
88  
89  
90  
91  
92  
93  
94  
95  
96  
97  
98  
99  
100  
101  
102  
103  
104  
105  
106  
107  
108  
109  
110  
111  
112  
113  
114  
115  
116  
117  
118  
119  
120  
121  
122  
123  
124  
125  
126  
127  
128  
129  
130  
131  
132  
133  
134  
135  
136  
137  
138  
139  
140  
141  
142  
143  
144  
145  
146  
147  
148  
149  
150  
151  
152  
153  
154  
155  
156  
157  
158  
159  
160  
161  
162  
163  
164  
165  
166  
167  
168  
169  
170  
171  
172  
173  
174  
175  
176  
177  
178  
179  
180  
181  
182  
183  
184  
185  
186  
187  
188  
189  
190  
191  
192  
193  
194  
195  
196  
197  
198  
199  
200  
201  
202  
203  
204  
205  
206  
207  
208  
209  
210  
211  
212  
213  
214  
215  
216  
217  
218  
219  
220  
221  
222  
223  
224  
225  
226  
227  
228  
229  
230  
231  
232  
233  
234  
235  
236  
237  
238  
239  
240  
241  
242  
243  
244  
245  
246  
247  
248  
249  
250  
251  
252  
253  
254  
255  
256  
257  
258  
259  
260  
261  
262  
263  
264  
265  
266  
267  
268  
269  
270  
271  
272  
273  
274  
275  
276  
277  
278  
279  
280  
281  
282  
283  
284  
285  
286  
287  
288  
289  
290  
291  
292  
293  
294  
295  
296  
297  
298  
299  
300  
301  
302  
303  
304  
305  
306  
307  
308  
309  
310  
311  
312  
313  
314  
315  
316  
317  
318  
319  
320  
321  
322  
323  
324  
325  
326  
327  
328  
329  
330  
331  
332  
333  
334  
335  
336  
337  
338  
339  
340  
341  
342  
343  
344  
345  
346  
347  
348  
349  
350  
351  
352  
353  
354  
355  
356  
357  
358  
359  
360  
361  
362  
363  
364  
365  
366  
367  
368  
369  
370  
371  
372  
373  
374  
375  
376  
377  
378  
379  
380  
381  
382  
383  
384  
385  
386  
387  
388  
389  
390  
391  
392  
393  
394  
395  
396  
397  
398  
399  
400  
401  
402  
403  
404  
405  
406  
407  
408  
409  
410  
411  
412  
413  
414  
415  
416  
417  
418  
419  
420  
421  
422  
423  
424  
425  
426  
427  
428  
429  
430  
431  
432  
433  
434  
435  
436  
437  
438  
439  
440  
441  
442  
443  
444  
445  
446  
447  
448  
449  
450  
451  
452  
453  
454  
455  
456  
457  
458  
459  
460  
461  
462  
463  
464  
465  
466  
467  
468  
469  
470  
471  
472  
473  
474  
475  
476  
477  
478  
479  
480  
481  
482  
483  
484  
485  
486  
487  
488  
489  
490  
491  
492  
493  
494  
495  
496  
497  
498  
499  
500  
501  
502  
503  
504  
505  
506  
507  
508  
509  
510  
511  
512  
513  
514  
515  
516  
517  
518  
519  
520  
521  
522  
523  
524  
525  
526  
527  
528  
529  
530  
531  
532  
533  
534  
535  
536  
537  
538  
539  
540  
541  
542  
543  
544  
545  
546  
547  
548  
549  
550  
551  
552  
553  
554  
555  
556  
557  
558  
559  
560  
561  
562  
563  
564  
565  
566  
567  
568  
569  
570  
571  
572  
573  
574  
575  
576  
577  
578  
579  
580  
581  
582  
583  
584  
585  
586  
587  
588  
589  
590  
591  
592  
593  
594  
595  
596  
597  
598  
599  
600  
601  
602  
603  
604  
605  
606  
607  
608  
609  
610  
611  
612  
613  
614  
615  
616  
617  
618  
619  
620  
621  
622  
623  
624  
625  
626  
627  
628  
629  
630  
631  
632  
633  
634  
635  
636  
637  
638  
639  
640  
641  
642  
643  
644  
645  
646  
647  
648  
649  
650  
651  
652  
653  
654  
655  
656  
657  
658  
659  
660  
661  
662  
663  
664  
665  
666  
667  
668  
669  
670  
671  
672  
673  
674  
675  
676  
677  
678  
679  
680  
681  
682  
683  
684  
685  
686  
687  
688  
689  
690  
691  
692  
693  
694  
695  
696  
697  
698  
699  
700  
701  
702  
703  
704  
705  
706  
707  
708  
709  
710  
711  
712  
713  
714  
715  
716  
717  
718  
719  
720  
721  
722  
723  
724  
725  
726  
727  
728  
729  
730  
731  
732  
733  
734  
735  
736  
737  
738  
739  
740  
741  
742  
743  
744  
745  
746  
747  
748  
749  
750  
751  
752  
753  
754  
755  
756  
757  
758  
759  
760  
761  
762  
763  
764  
765  
766  
767  
768  
769  
770  
771  
772  
773  
774  
775  
776  
777  
778  
779  
780  
781  
782  
783  
784  
785  
786  
787  
788  
789  
790  
791  
792  
793  
794  
795  
796  
797  
798  
799  
800  
801  
802  
803  
804  
805  
806  
807  
808  
809  
810  
811  
812  
813  
814  
815  
816  
817  
818  
819  
820  
821  
822  
823  
824  
825  
826  
827  
828  
829  
830  
831  
832  
833  
834  
835  
836  
837  
838  
839  
840  
841  
842  
843  
844  
845  
846  
847  
848  
849  
850  
851  
852  
853  
854  
855  
856  
857  
858  
859  
860  
861  
862  
863  
864  
865  
866  
867  
868  
869  
870  
871  
872  
873  
874  
875  
876  
877  
878  
879  
880  
881  
882  
883  
884  
885  
886  
887  
888  
889  
890  
891  
892  
893  
894  
895  
896  
897  
898  
899  
900  
901  
902  
903  
904  
905  
906  
907  
908  
909  
910  
911  
912  
913  
914  
915  
916  
917  
918  
919  
920  
921  
922  
923  
924  
925  
926  
927  
928  
929  
930  
931  
932  
933  
934  
935  
936  
937  
938  
939  
940  
941  
942  
943  
944  
945  
946  
947  
948  
949  
950  
951  
952  
953  
954  
955  
956  
957  
958  
959  
960  
961  
962  
963  
964  
965  
966  
967  
968  
969  
970  
971  
972  
973  
974  
975  
976  
977  
978  
979  
980  
981  
982  
983  
984  
985  
986  
987  
988  
989  
990  
991  
992  
993  
994  
995  
996  
997  
998  
999  
1000

SPECIAL SYSTEMS PLAN - BLDG. ACC - 2ND FLOOR

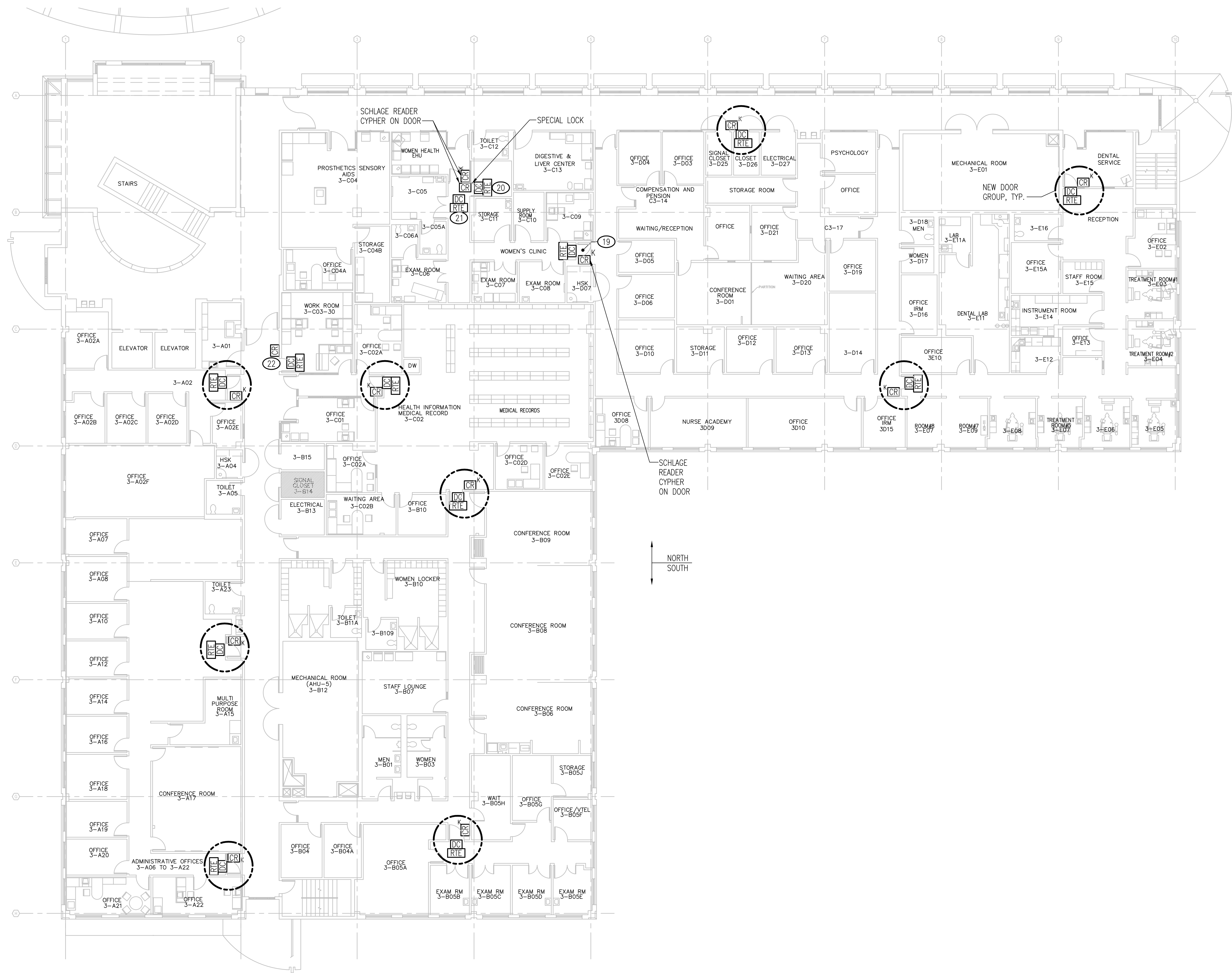
SCALE: 3/32" = 1'-0"

3/32" = 1'-0" 5' 0' 5' 10' 20' 30'

		30% SUBMITTAL	Professional Seal	Drawing Title SPECIAL SYSTEMS PLAN - BLDG. ACC - 2ND FLOOR		Project Title VA MEDICAL CENTER PACIFIC ISLANDS		Date 04-04-2016
				Site: HAWAII	Building: ACC	Drawn:	Checked:	Approved:
Revisions		Date	15292	Location: VAMC, PACIFIC ISLANDS		Approved:		Scale: AS NOTED
						Drawing No. EY102		



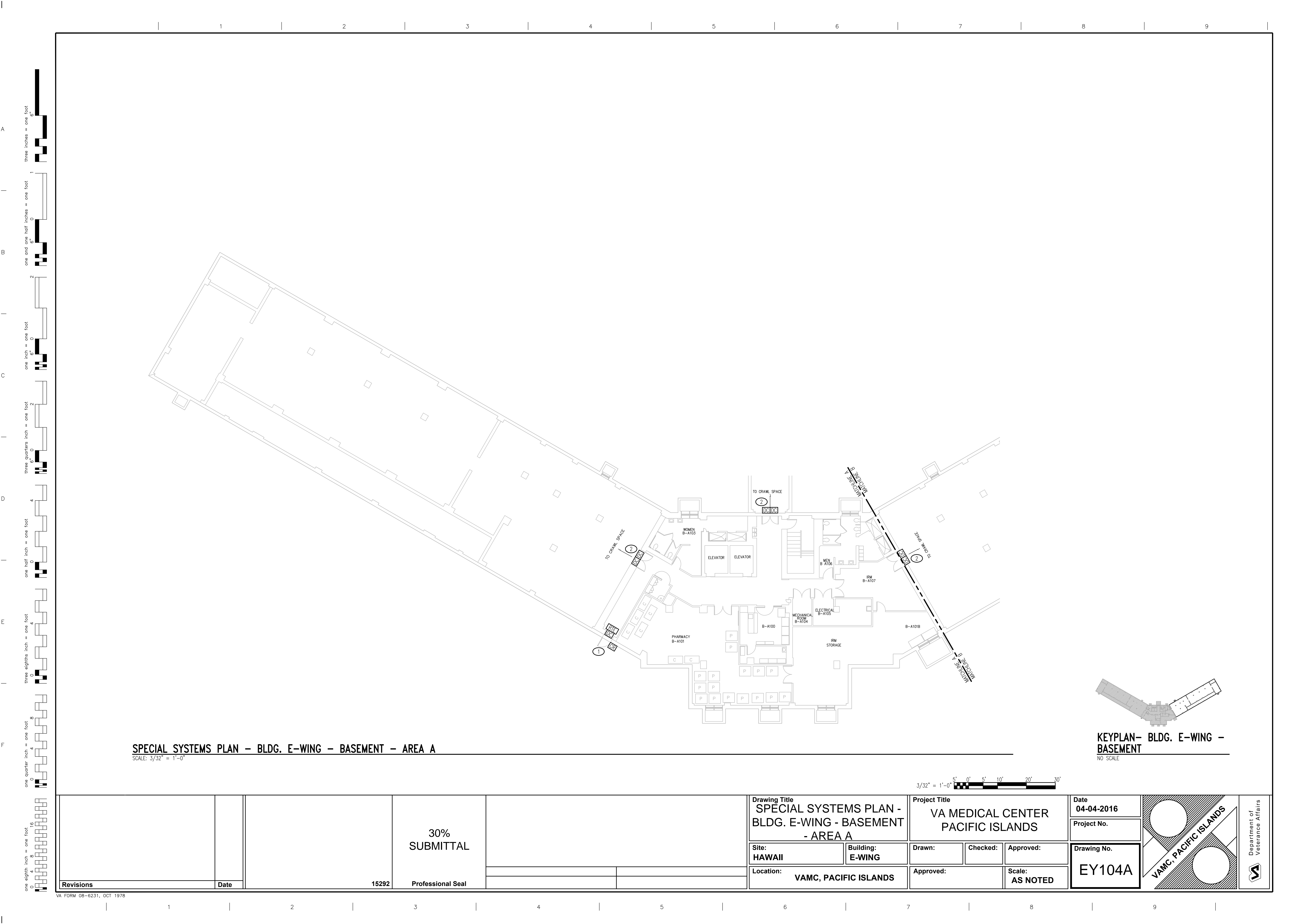
1  
2  
3  
4  
5  
6  
7  
8  
9  
10  
11  
12  
13  
14  
15  
16  
17  
18  
19  
20  
21  
22  
23  
24  
25  
26  
27  
28  
29  
30  
31  
32  
33  
34  
35  
36  
37  
38  
39  
40  
41  
42  
43  
44  
45  
46  
47  
48  
49  
50  
51  
52  
53  
54  
55  
56  
57  
58  
59  
60  
61  
62  
63  
64  
65  
66  
67  
68  
69  
70  
71  
72  
73  
74  
75  
76  
77  
78  
79  
80  
81  
82  
83  
84  
85  
86  
87  
88  
89  
90  
91  
92  
93  
94  
95  
96  
97  
98  
99  
100  
101  
102  
103  
104  
105  
106  
107  
108  
109  
110  
111  
112  
113  
114  
115  
116  
117  
118  
119  
120  
121  
122  
123  
124  
125  
126  
127  
128  
129  
130  
131  
132  
133  
134  
135  
136  
137  
138  
139  
140  
141  
142  
143  
144  
145  
146  
147  
148  
149  
150  
151  
152  
153  
154  
155  
156  
157  
158  
159  
160  
161  
162  
163  
164  
165  
166  
167  
168  
169  
170  
171  
172  
173  
174  
175  
176  
177  
178  
179  
180  
181  
182  
183  
184  
185  
186  
187  
188  
189  
190  
191  
192  
193  
194  
195  
196  
197  
198  
199  
200  
201  
202  
203  
204  
205  
206  
207  
208  
209  
210  
211  
212  
213  
214  
215  
216  
217  
218  
219  
220  
221  
222  
223  
224  
225  
226  
227  
228  
229  
230  
231  
232  
233  
234  
235  
236  
237  
238  
239  
240  
241  
242  
243  
244  
245  
246  
247  
248  
249  
250  
251  
252  
253  
254  
255  
256  
257  
258  
259  
260  
261  
262  
263  
264  
265  
266  
267  
268  
269  
270  
271  
272  
273  
274  
275  
276  
277  
278  
279  
280  
281  
282  
283  
284  
285  
286  
287  
288  
289  
290  
291  
292  
293  
294  
295  
296  
297  
298  
299  
300  
301  
302  
303  
304  
305  
306  
307  
308  
309  
310  
311  
312  
313  
314  
315  
316  
317  
318  
319  
320  
321  
322  
323  
324  
325  
326  
327  
328  
329  
330  
331  
332  
333  
334  
335  
336  
337  
338  
339  
340  
341  
342  
343  
344  
345  
346  
347  
348  
349  
350  
351  
352  
353  
354  
355  
356  
357  
358  
359  
360  
361  
362  
363  
364  
365  
366  
367  
368  
369  
370  
371  
372  
373  
374  
375  
376  
377  
378  
379  
380  
381  
382  
383  
384  
385  
386  
387  
388  
389  
390  
391  
392  
393  
394  
395  
396  
397  
398  
399  
400  
401  
402  
403  
404  
405  
406  
407  
408  
409  
410  
411  
412  
413  
414  
415  
416  
417  
418  
419  
420  
421  
422  
423  
424  
425  
426  
427  
428  
429  
430  
431  
432  
433  
434  
435  
436  
437  
438  
439  
440  
441  
442  
443  
444  
445  
446  
447  
448  
449  
450  
451  
452  
453  
454  
455  
456  
457  
458  
459  
460  
461  
462  
463  
464  
465  
466  
467  
468  
469  
470  
471  
472  
473  
474  
475  
476  
477  
478  
479  
480  
481  
482  
483  
484  
485  
486  
487  
488  
489  
490  
491  
492  
493  
494  
495  
496  
497  
498  
499  
500  
501  
502  
503  
504  
505  
506  
507  
508  
509  
510  
511  
512  
513  
514  
515  
516  
517  
518  
519  
520  
521  
522  
523  
524  
525  
526  
527  
528  
529  
530  
531  
532  
533  
534  
535  
536  
537  
538  
539  
540  
541  
542  
543  
544  
545  
546  
547  
548  
549  
550  
551  
552  
553  
554  
555  
556  
557  
558  
559  
560  
561  
562  
563  
564  
565  
566  
567  
568  
569  
570  
571  
572  
573  
574  
575  
576  
577  
578  
579  
580  
581  
582  
583  
584  
585  
586  
587  
588  
589  
590  
591  
592  
593  
594  
595  
596  
597  
598  
599  
600  
601  
602  
603  
604  
605  
606  
607  
608  
609  
610  
611  
612  
613  
614  
615  
616  
617  
618  
619  
620  
621  
622  
623  
624  
625  
626  
627  
628  
629  
630  
631  
632  
633  
634  
635  
636  
637  
638  
639  
640  
641  
642  
643  
644  
645  
646  
647  
648  
649  
650  
651  
652  
653  
654  
655  
656  
657  
658  
659  
660  
661  
662  
663  
664  
665  
666  
667  
668  
669  
670  
671  
672  
673  
674  
675  
676  
677  
678  
679  
680  
681  
682  
683  
684  
685  
686  
687  
688  
689  
690  
691  
692  
693  
694  
695  
696  
697  
698  
699  
700  
701  
702  
703  
704  
705  
706  
707  
708  
709  
710  
711  
712  
713  
714  
715  
716  
717  
718  
719  
720  
721  
722  
723  
724  
725  
726  
727  
728  
729  
730  
731  
732  
733  
734  
735  
736  
737  
738  
739  
740  
741  
742  
743  
744  
745  
746  
747  
748  
749  
750  
751  
752  
753  
754  
755  
756  
757  
758  
759  
760  
761  
762  
763  
764  
765  
766  
767  
768  
769  
770  
771  
772  
773  
774  
775  
776  
777  
778  
779  
780  
781  
782  
783  
784  
785  
786  
787  
788  
789  
790  
791  
792  
793  
794  
795  
796  
797  
798  
799  
800  
801  
802  
803  
804  
805  
806  
807  
808  
809  
810  
811  
812  
813  
814  
815  
816  
817  
818  
819  
820  
821  
822  
823  
824  
825  
826  
827  
828  
829  
830  
831  
832  
833  
834  
835  
836  
837  
838  
839  
840  
841  
842  
843  
844  
845  
846  
847  
848  
849  
850  
851  
852  
853  
854  
855  
856  
857  
858  
859  
860  
861  
862  
863  
864  
865  
866  
867  
868  
869  
870  
871  
872  
873  
874  
875  
876  
877  
878  
879  
880  
881  
882  
883  
884  
885  
886  
887  
888  
889  
890  
891  
892  
893  
894  
895  
896  
897  
898  
899  
900  
901  
902  
903  
904  
905  
906  
907  
908  
909  
910  
911  
912  
913  
914  
915  
916  
917  
918  
919  
920  
921  
922  
923  
924  
925  
926  
927  
928  
929  
930  
931  
932  
933  
934  
935  
936  
937  
938  
939  
940  
941  
942  
943  
944  
945  
946  
947  
948  
949  
950  
951  
952  
953  
954  
955  
956  
957  
958  
959  
960  
961  
962  
963  
964  
965  
966  
967  
968  
969  
970  
971  
972  
973  
974  
975  
976  
977  
978  
979  
980  
981  
982  
983  
984  
985  
986  
987  
988  
989  
990  
991  
992  
993  
994  
995  
996  
997  
998  
999  
1000



**SPECIAL SYSTEMS PLAN - BLDG. ACC - 3RD FLOOR**  
SCALE: 3/32" = 1'-0"

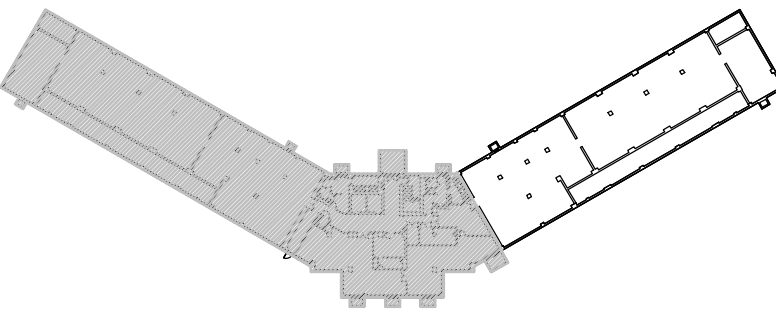
3/32" = 1'-0" 5' 0' 5' 10' 20' 30'

			30% SUBMITTAL			Drawing Title SPECIAL SYSTEMS PLAN - BLDG. ACC - 3RD FLOOR		Project Title VA MEDICAL CENTER PACIFIC ISLANDS			Date 04-04-2016
						Site: HAWAII	Building: ACC	Drawn:	Checked:	Approved:	Project No.
Revisions			Date	15292	Professional Seal	Location: VAMC, PACIFIC ISLANDS		Approved:		Scale: AS NOTED	Drawing No. EY103



**SPECIAL SYSTEMS PLAN – BLDG. E-WING – BASEMENT – AREA A**

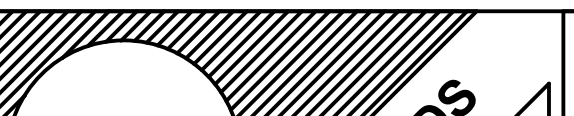
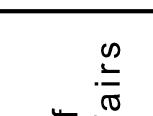
SCALE: 3/32" = 1'-0"



**KEYPLAN– BLDG. E-WING – BASEMENT**

NO SCALE

3/32" = 1'-0" 5' 0' 5' 10' 20' 30'

			30% SUBMITTAL			Drawing Title SPECIAL SYSTEMS PLAN - BLDG. E-WING - BASEMENT - AREA A		Project Title VA MEDICAL CENTER PACIFIC ISLANDS			Date 04-04-2016		Department of Veterance Affairs 
						Site: HAWAII	Building: E-WING	Drawn:	Checked:	Approved:	Project No.		
						Location: VAMC, PACIFIC ISLANDS		Approved:		Scale: AS NOTED	Drawing No. EY104A		
Revisions	Date	15292	Professional Seal										

A

B

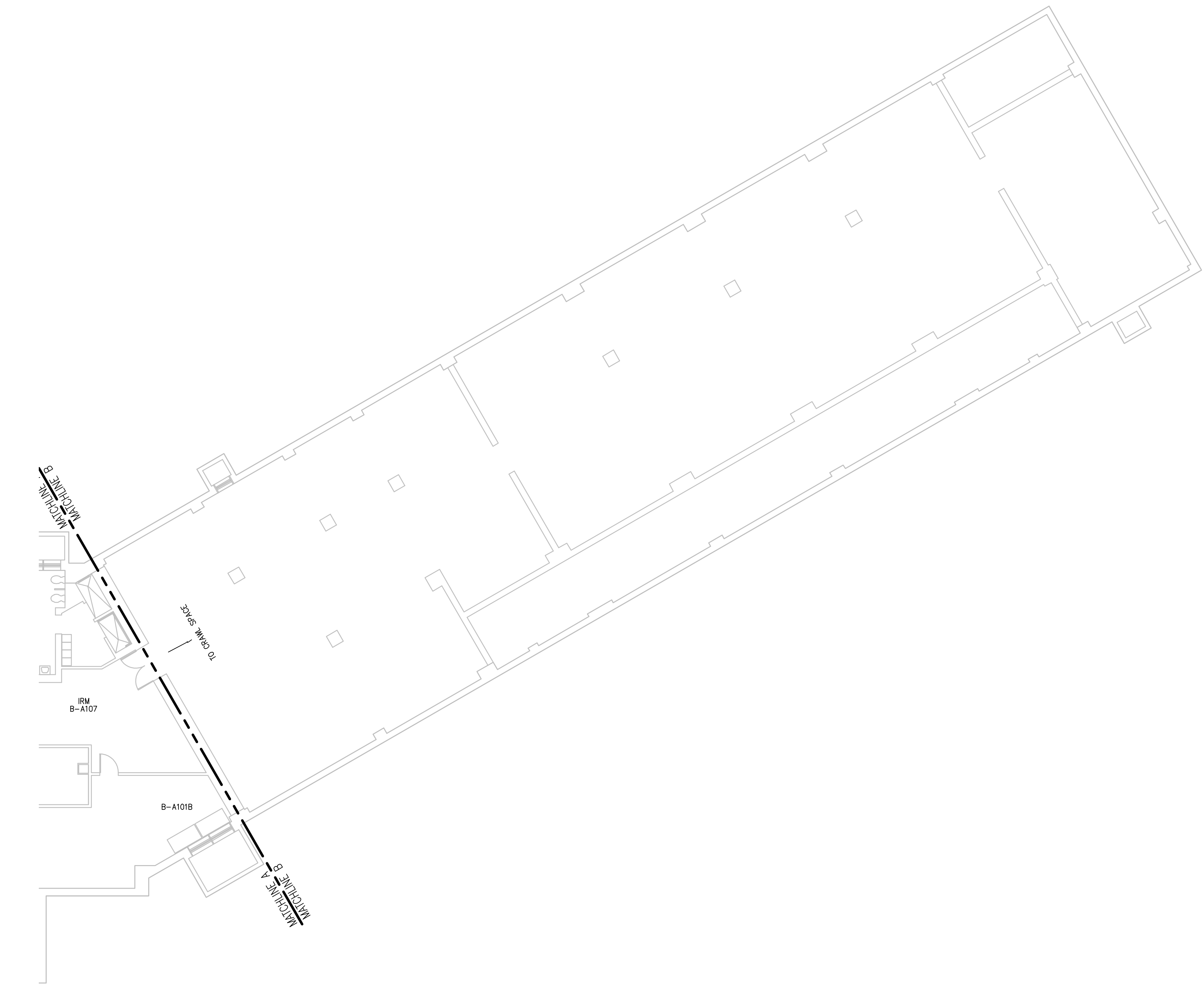
C

D

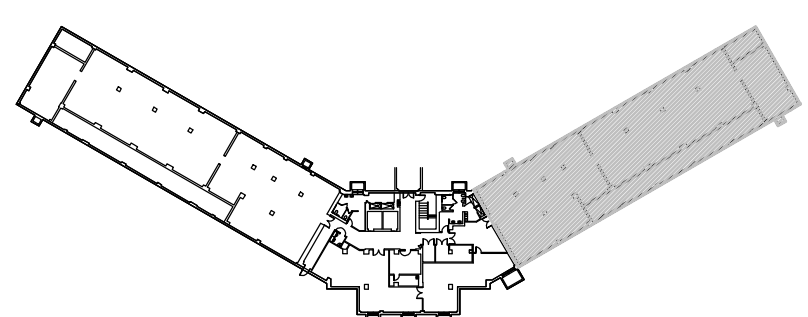
E

F

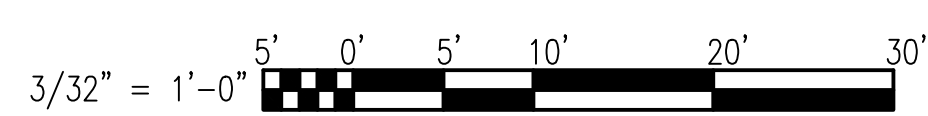
three inches = one foot  
one and one half inches = one foot  
one inch = one foot  
three quarters inch = one foot  
one half inch = one foot  
three eighths inch = one foot  
one quarter inch = one foot  
one eighth inch = one foot



SPECIAL SYSTEMS PLAN - BLDG. E-WING - BASEMENT - AREA B  
SCALE: 3/32" = 1'-0"



KEYPLAN- BLDG. E-WING - BASEMENT  
NO SCALE



			30% SUBMITTAL		Drawing Title SPECIAL SYSTEMS PLAN - BLDG. E-WING - BASEMENT - AREA B		Project Title VA MEDICAL CENTER PACIFIC ISLANDS			Date 04-04-2016		
					Site: HAWAII		Building: E-WING		Drawn:	Checked:	Approved:	Project No.
Revisions		Date	15292	Professional Seal	Location: VAMC, PACIFIC ISLANDS		Approved:		Scale: AS NOTED		Drawing No. EY104B	

VAMC, PACIFIC ISLANDS

Department of  
Veterance Affairs

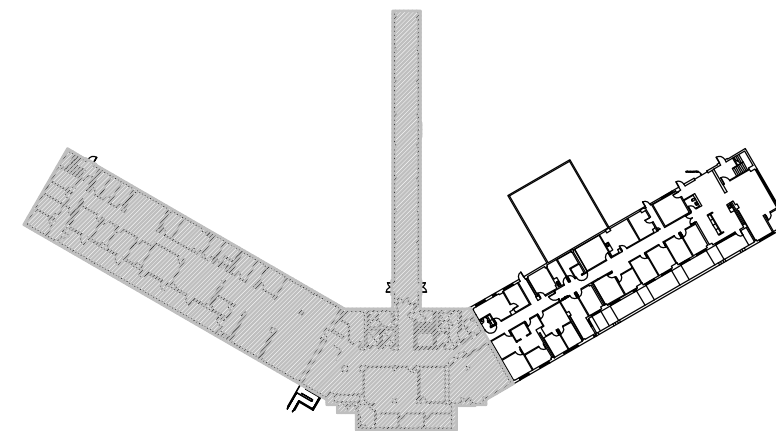
three inches = one foot  
one and one half inches = one foot  
one inch = one foot  
three quarters inch = one foot  
one half inch = one foot  
three eighths inch = one foot  
one quarter inch = one foot  
one eighth inch = one foot  
one eighth inch = one foot

NOTES THIS SHEET

1 READER IS PRESENTLY INTEGRATED WITH KEYPAD INTO DOOR HARDWARE ON DOOR (SCHLAGE).

SPECIAL SYSTEMS PLAN - BLDG. E-WING - 1ST FLOOR - AREA A

SCALE: 3/32" = 1'-0"



KEYPLAN- BLDG. E-WING - 1ST FLOOR

NO SCALE

3/32" = 1'-0" 5' 0' 5' 10' 20' 30'

			30% SUBMITTAL			Drawing Title SPECIAL SYSTEMS PLAN - BLDG. E-WING - 1ST FLOOR - AREA A		Project Title VA MEDICAL CENTER PACIFIC ISLANDS			Date 04-04-2016
						Site: HAWAII	Building: E-WING	Drawn:	Checked:	Approved:	Project No.
Revisions		Date	15292	Professional Seal		Location: VAMC, PACIFIC ISLANDS		Approved:		Scale: AS NOTED	Drawing No. EY105A



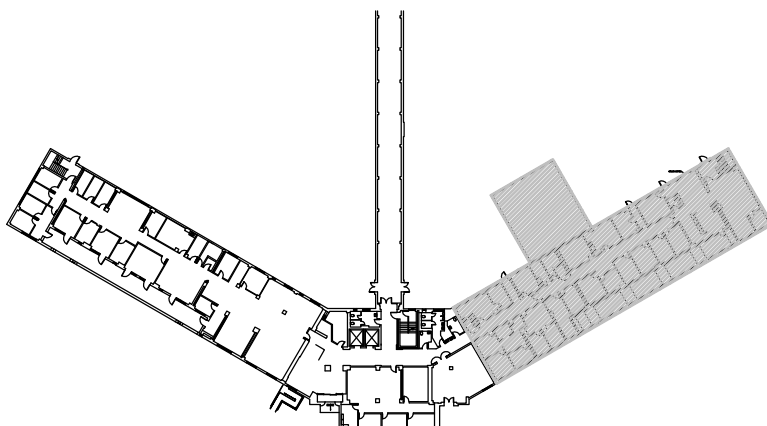
NOTES THIS SHEET

1 CRASHBAR VON DUPRIN 99 SERIES



SPECIAL SYSTEMS PLAN - BLDG. E-WING - 1ST FLOOR - AREA B

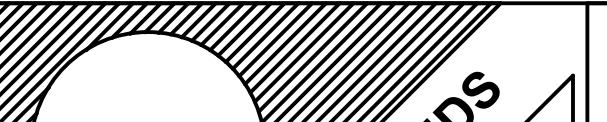

SCALE: 3/32" = 1'-0"



KEYPLAN- BLDG. E-WING - 1ST FLOOR

NO SCALE

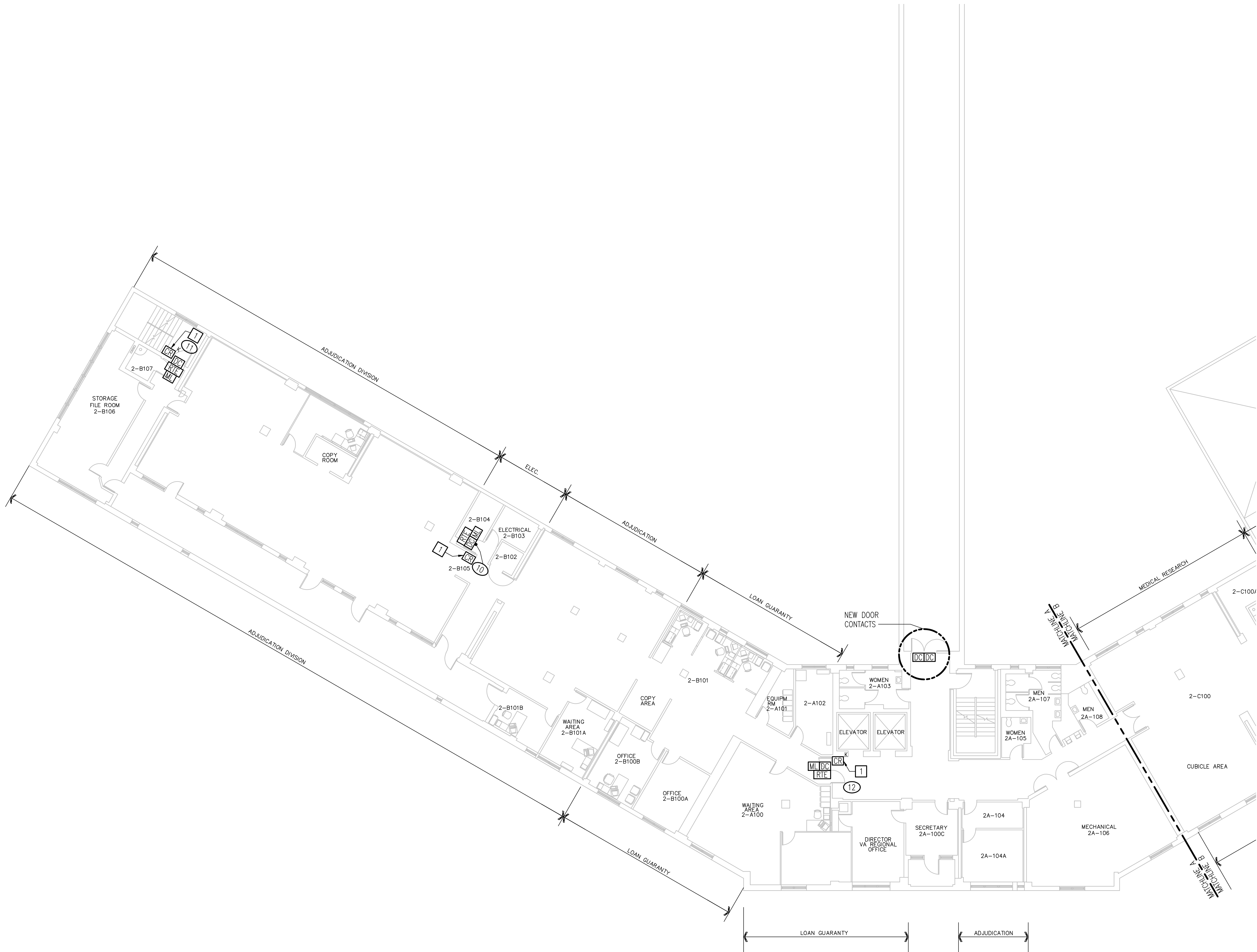
3/32" = 1'-0" 5' 0' 5' 10' 20' 30'

			30% SUBMITTAL			Drawing Title SPECIAL SYSTEMS PLAN - BLDG. E-WING - 1ST FLOOR - AREA B		Project Title VA MEDICAL CENTER PACIFIC ISLANDS			Date 04-04-2016			Department of Veterance Affairs 		
						Site: HAWAII		Building: E-WING		Drawn:	Checked:	Approved:			Project No.	
						Location: VAMC, PACIFIC ISLANDS		Approved:			Scale: AS NOTED				Drawing No. EY105B	
Revisions		Date	15292	Professional Seal												

three inches = one foot  
one and one half inches = one foot  
one inch = one foot  
three quarters inch = one foot  
one half inch = one foot  
three eighths inch = one foot  
one quarter inch = one foot  
one eighth inch = one foot

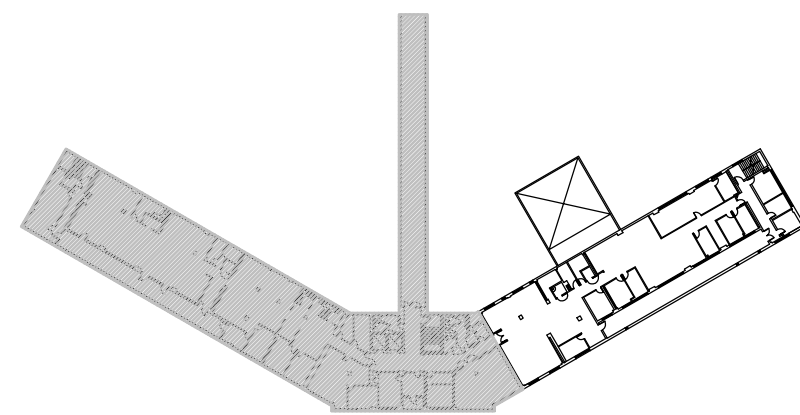
NOTES THIS SHEET

1 READER IS PRESENTLY INTEGRATED WITH KEYPAD INTO DOOR HARDWARE ON DOOR (SCHLAGE).



SPECIAL SYSTEMS PLAN - BLDG. E-WING - 2ND FLOOR - AREA A

SCALE: 3/32" = 1'-0"



KEYPLAN- BLDG. E-WING - 2ND FLOOR

NO SCALE

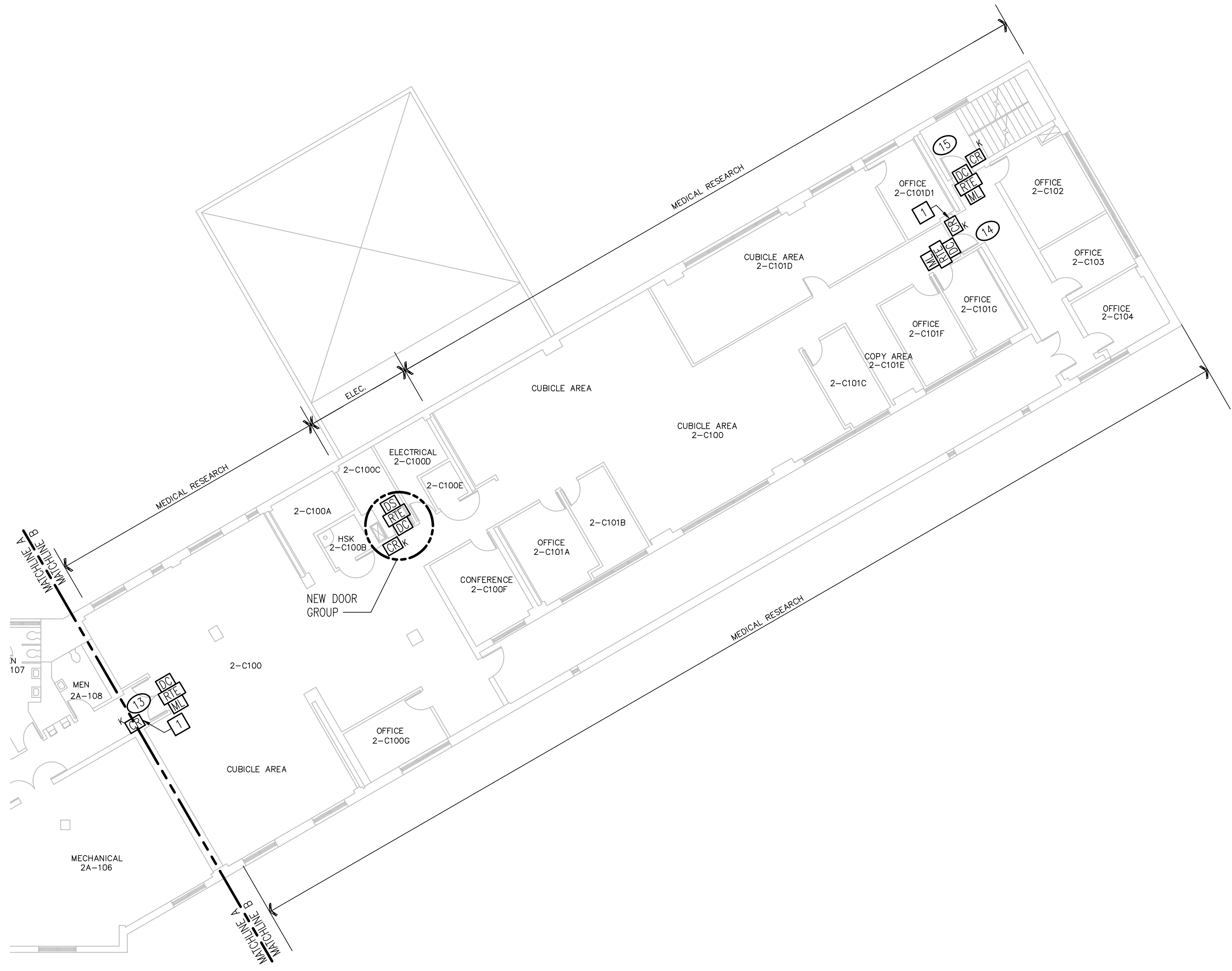
3/32" = 1'-0" 5' 0' 5' 10' 20' 30'

Revisions		Date	15292	30% SUBMITTAL	Professional Seal	Drawing Title		Project Title			Date	
						SPECIAL SYSTEMS PLAN - BLDG. E-WING - 2ND FLOOR - AREA A		VA MEDICAL CENTER PACIFIC ISLANDS			04-04-2016	
Site: HAWAII		Building: E-WING		Drawn:		Checked:		Approved:		Project No.		
Location: VAMC, PACIFIC ISLANDS		Approved:		Scale: AS NOTED		Drawing No.		EY106A				

three inches = one foot  
one and one half inches = one foot  
one inch = one foot  
three quarters inch = one foot  
one half inch = one foot  
three eighths inch = one foot  
one quarter inch = one foot  
one eighth inch = one foot

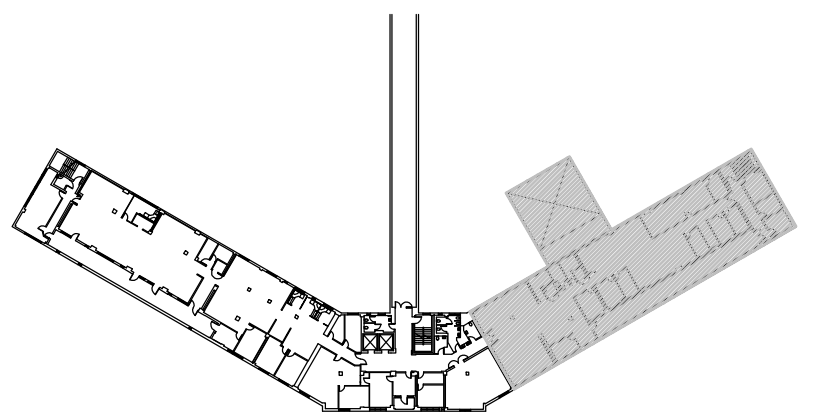
NOTES THIS SHEET

1 READER IS PRESENTLY INTEGRATED WITH KEYPAD INTO DOOR HARDWARE ON DOOR (SCHLAGE).



SPECIAL SYSTEMS PLAN - BLDG. E-WING - 2ND FLOOR - AREA B

SCALE: 3/32" = 1'-0"



KEYPLAN- BLDG. E-WING - 2ND FLOOR

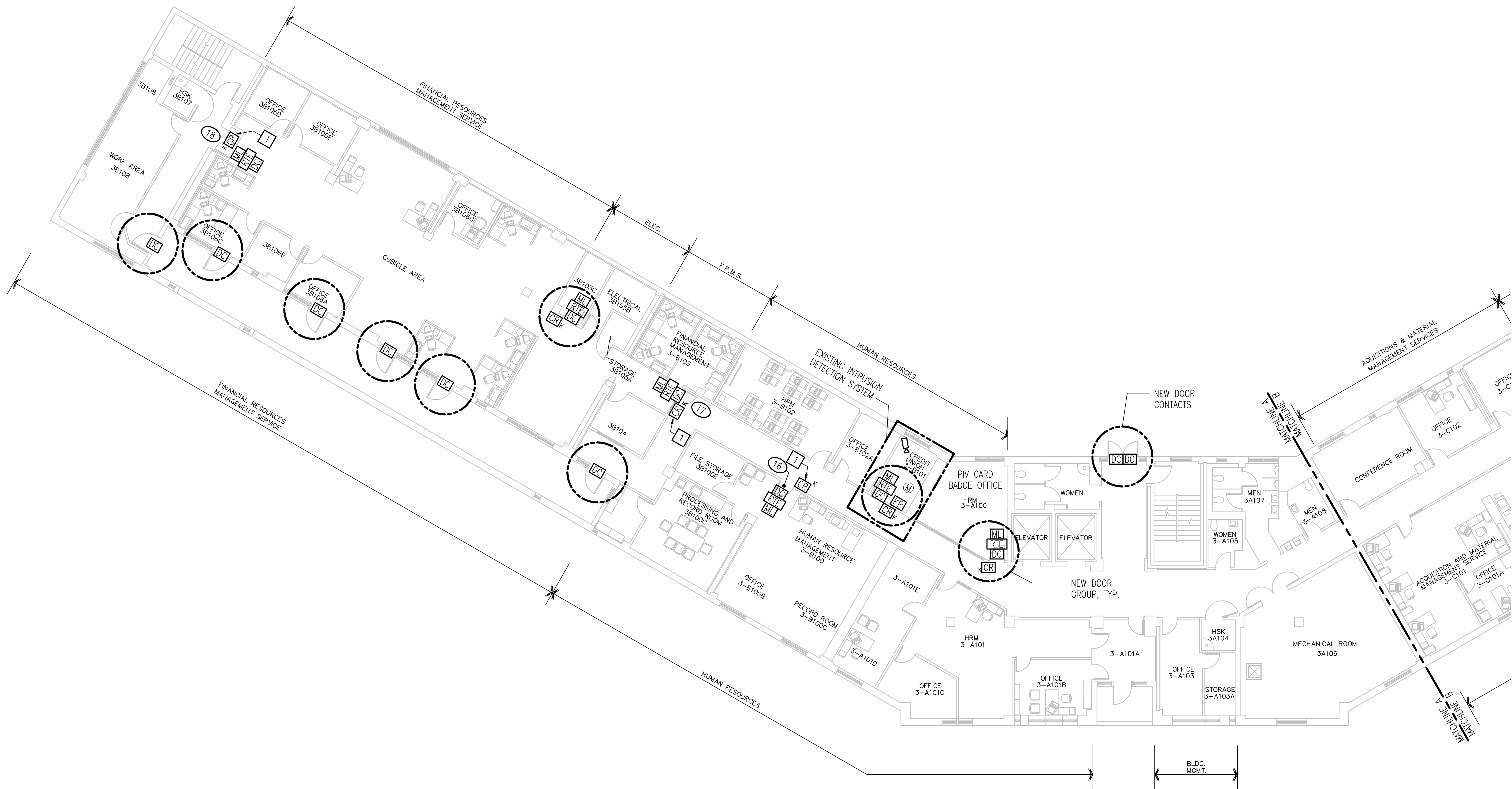
NO SCALE

3/32" = 1'-0" 5' 0' 5' 10' 20' 30'

			30% SUBMITTAL			Drawing Title SPECIAL SYSTEMS PLAN - BLDG. E-WING - 2ND FLOOR - AREA B		Project Title VA MEDICAL CENTER PACIFIC ISLANDS			Date 04-04-2016	VAMC, PACIFIC ISLANDS	Department of Veterance Affairs
						Site: HAWAII	Building: E-WING	Drawn:	Checked:	Approved:	Project No.		
Revisions		Date	15292	Professional Seal		Location: VAMC, PACIFIC ISLANDS		Approved:		Scale: AS NOTED	Drawing No. EY106B		

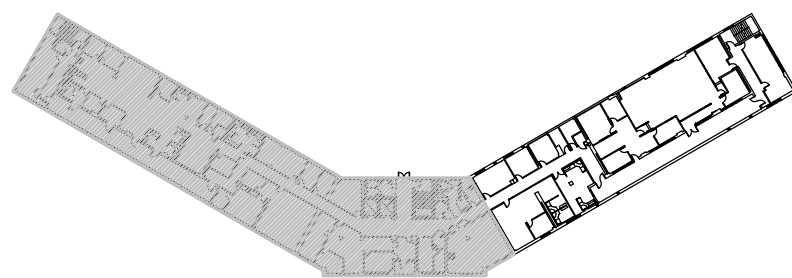
NOTES THIS SHEET

1 READER IS PRESENTLY INTEGRATED WITH KEYPAD INTO DOOR HARDWARE ON DOOR (SCHLAGE).



SPECIAL SYSTEMS PLAN - BLDG. E-WING - 3RD FLOOR - AREA A

SCALE: 3/32" = 1'-0"



KEYPLAN- BLDG. E-WING - 3RD FLOOR

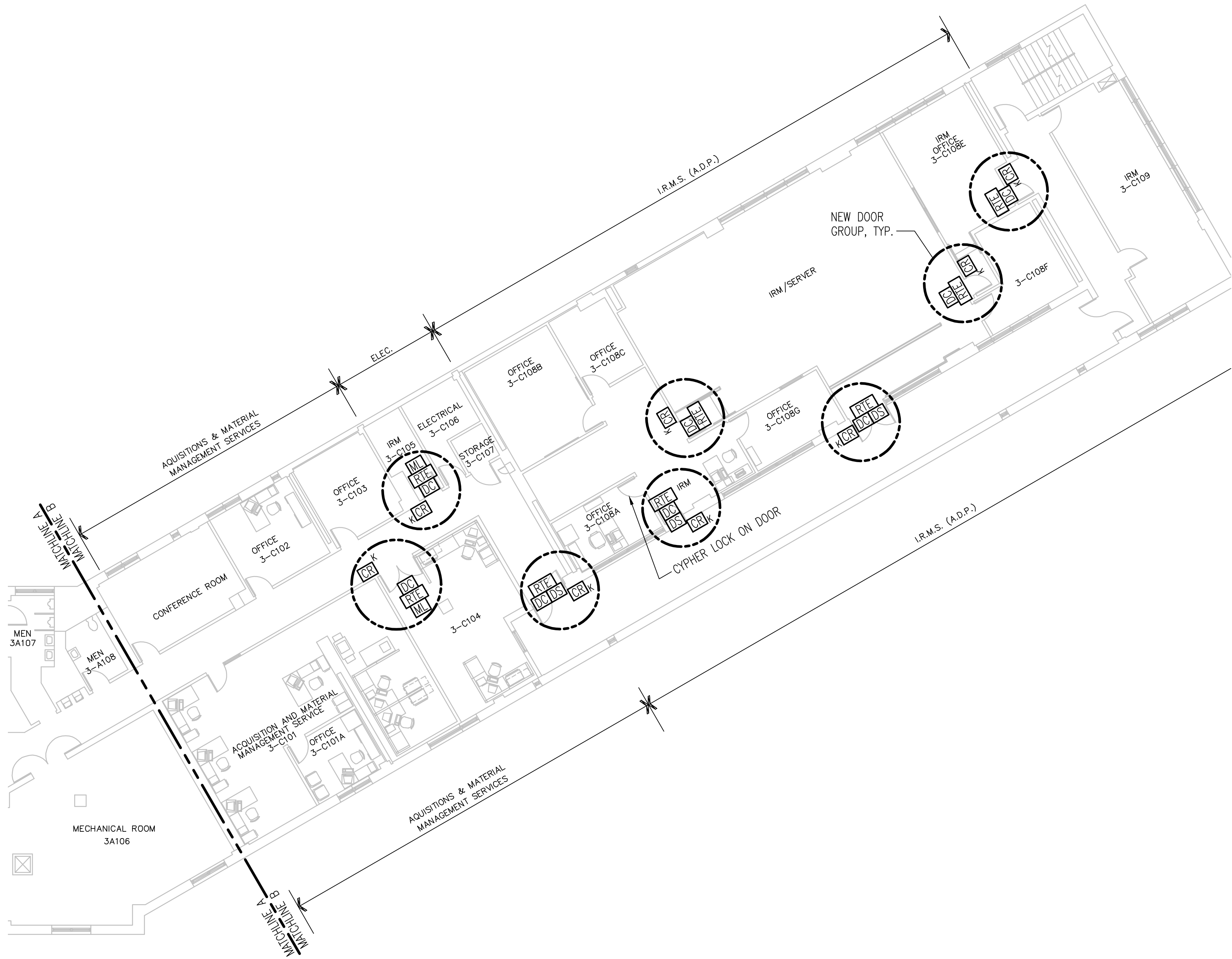
NO SCALE

3/32" = 1'-0" 5' 0' 5' 10' 20' 30'

			30% SUBMITTAL		Drawing Title SPECIAL SYSTEMS PLAN - BLDG. E-WING - 3RD FLOOR - AREA A		Project Title VA MEDICAL CENTER PACIFIC ISLANDS			Date 04-04-2016	
					Site: HAWAII		Building: E-WING		Drawn:	Checked:	Approved:
Location: VAMC, PACIFIC ISLANDS		Approved:		Scale: AS NOTED		Drawing No. EY107A					
Revisions		Date		15292		Professional Seal					

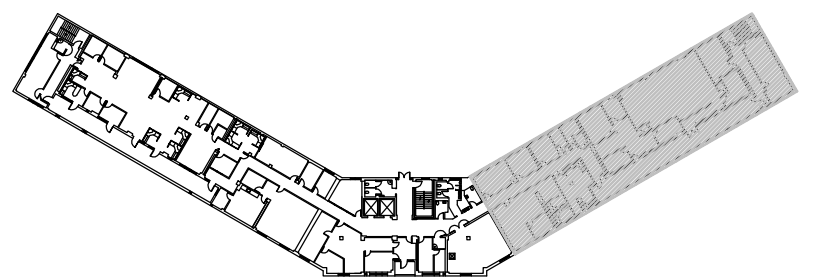


three inches = one foot  
one and one half inches = one foot  
one inch = one foot  
three quarters inch = one foot  
one half inch = one foot  
three eighths inch = one foot  
one quarter inch = one foot  
one eighth inch = one foot



SPECIAL SYSTEMS PLAN - BLDG. E-WING - 3RD FLOOR - AREA B

SCALE: 3/32" = 1'-0"

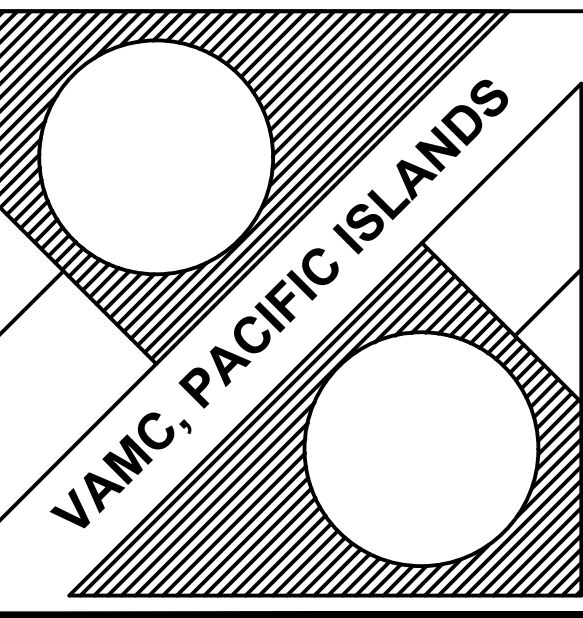


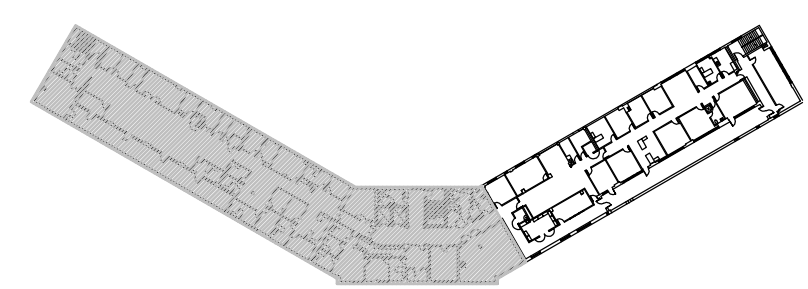
KEYPLAN- BLDG. E-WING - 3RD FLOOR

NO SCALE

3/32" = 1'-0" 5' 0' 5' 10' 20' 30'

Revisions		Date	15292	30% SUBMITTAL	Professional Seal	Drawing Title		Project Title			Date	
						SPECIAL SYSTEMS PLAN - BLDG. E-WING - 3RD FLOOR - AREA B		VA MEDICAL CENTER PACIFIC ISLANDS			04-04-2016	
						Site:	Building:	Drawn:	Checked:	Approved:	Project No.	
						HAWAII	E-WING					
						Location:	VAMC, PACIFIC ISLANDS			Approved:	Scale:	Drawing No.
									AS NOTED			EY107B





**SPECIAL SYSTEMS PLAN - BLDG. E-WING - 4TH FLOOR - AREA A**  
SCALE: 3/32" = 1'-0"

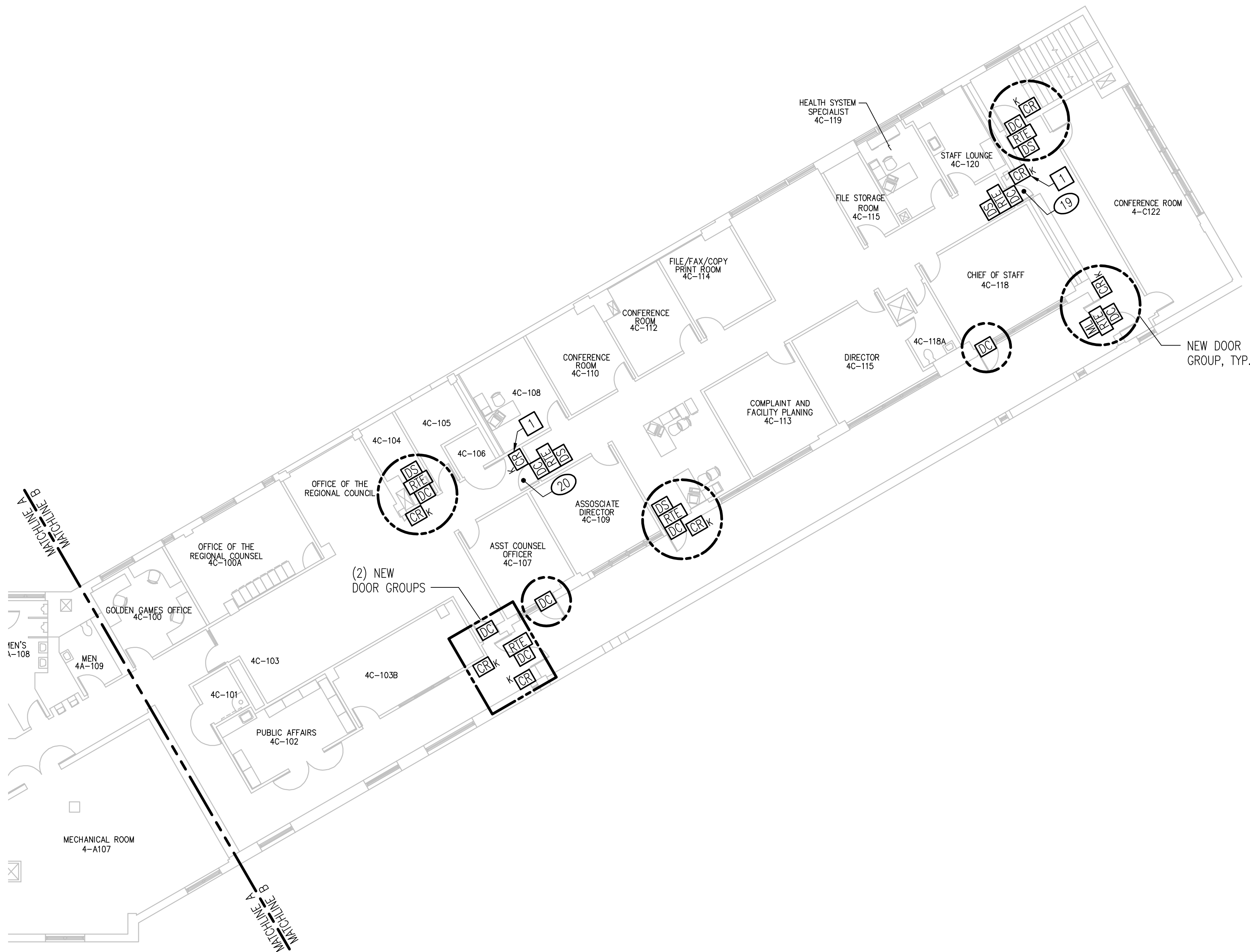
$3/32" = 1'-0"$  

VA FORM 08-6231, OCT 1978

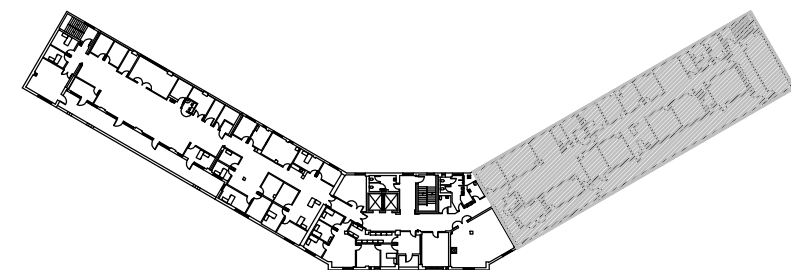
three inches = one foot  
one and one half inches = one foot  
one inch = one foot  
three quarters inch = one foot  
one half inch = one foot  
three eighths inch = one foot  
one quarter inch = one foot  
one eighth inch = one foot

NOTES THIS SHEET

1 READER IS PRESENTLY INTEGRATED WITH KEYPAD INTO DOOR HARDWARE ON DOOR (SCHLAGE).



SPECIAL SYSTEMS PLAN - BLDG. E-WING - 4TH FLOOR - AREA B  
SCALE: 3/32" = 1'-0"



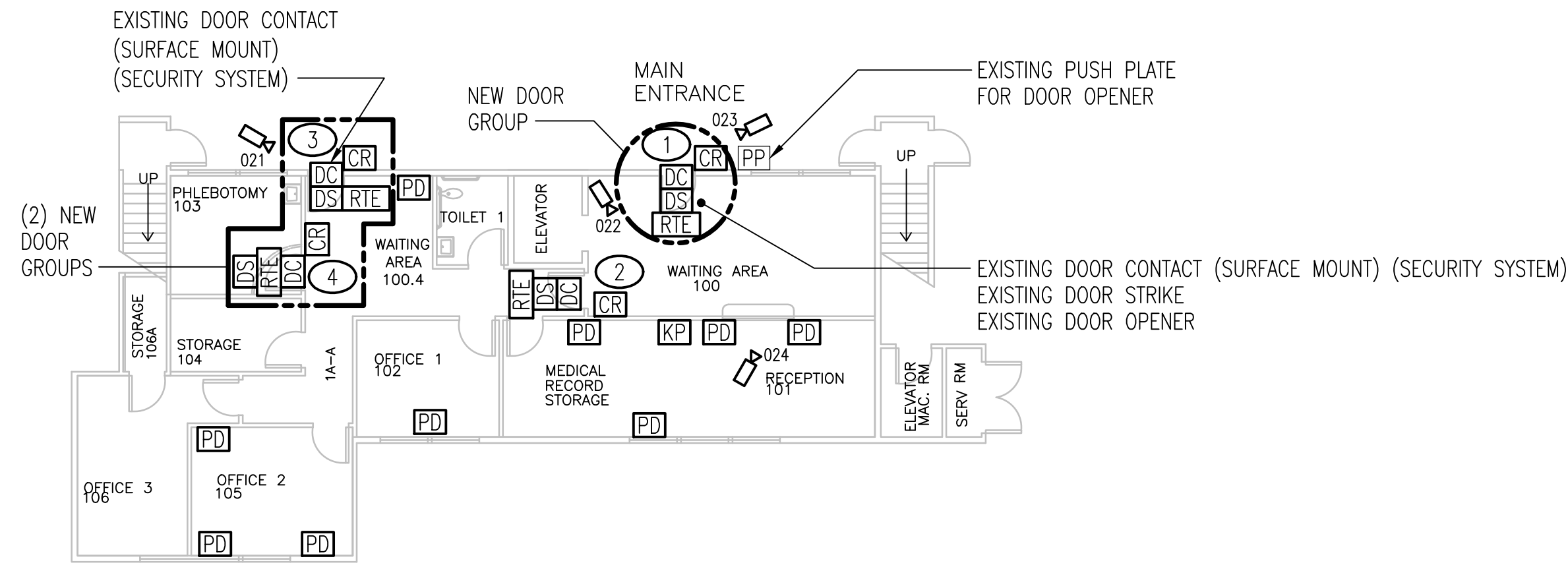
KEYPLAN- BLDG. E-WING - 4TH FLOOR  
NO SCALE

3/32" = 1'-0" 5' 0' 5' 10' 20' 30'

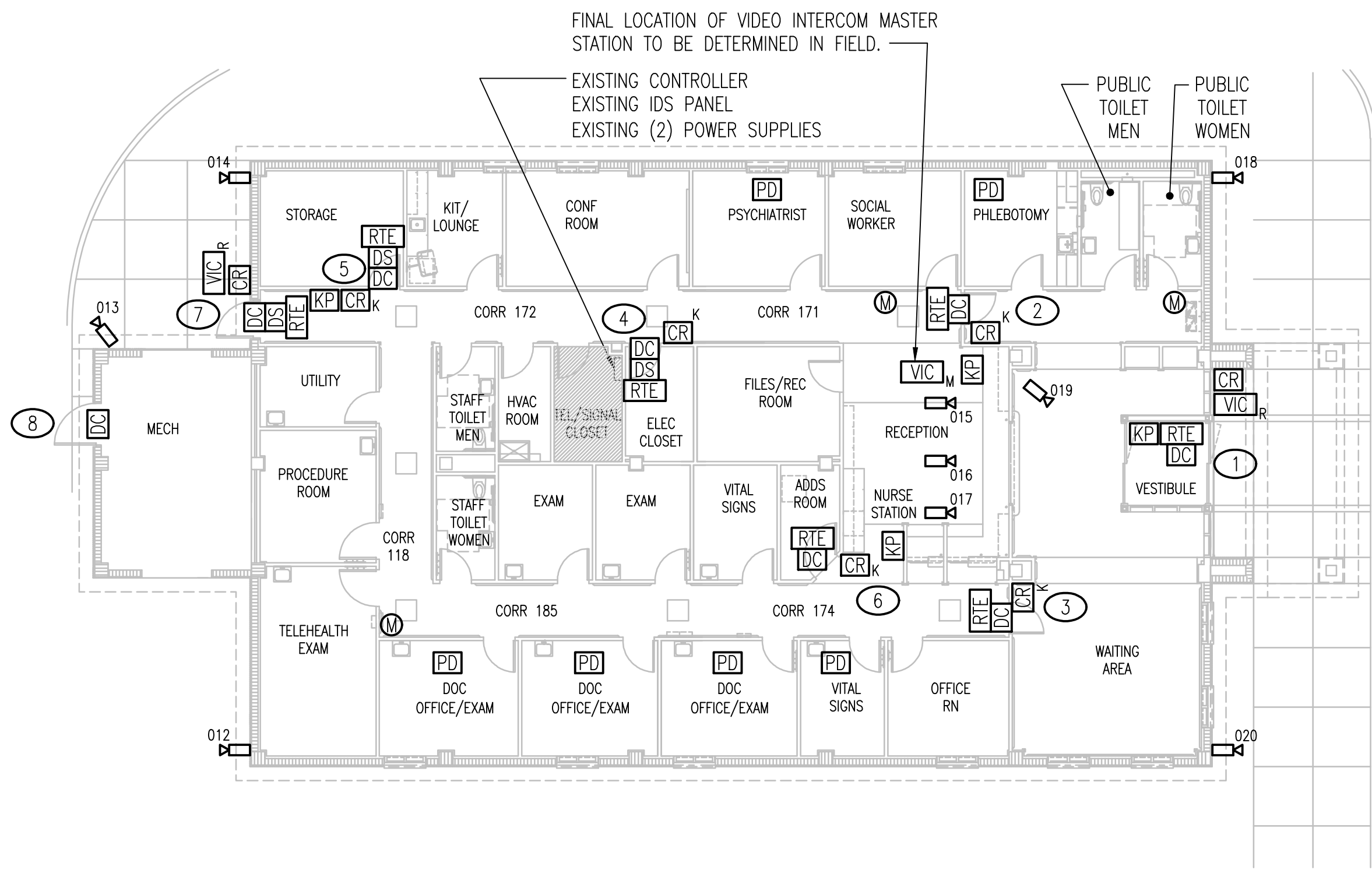
Revisions		Date	15292	30% SUBMITTAL	Professional Seal	Drawing Title SPECIAL SYSTEMS PLAN - BLDG. E-WING - 4TH FLOOR - AREA B		Project Title VA MEDICAL CENTER PACIFIC ISLANDS			Date 04-04-2016		
						Site: HAWAII		Building: E-WING		Drawn:	Checked:	Approved:	Project No.
						Location: VAMC, PACIFIC ISLANDS		Approved:		Scale: AS NOTED		Drawing No. EY108B	

VAMC, PACIFIC ISLANDS

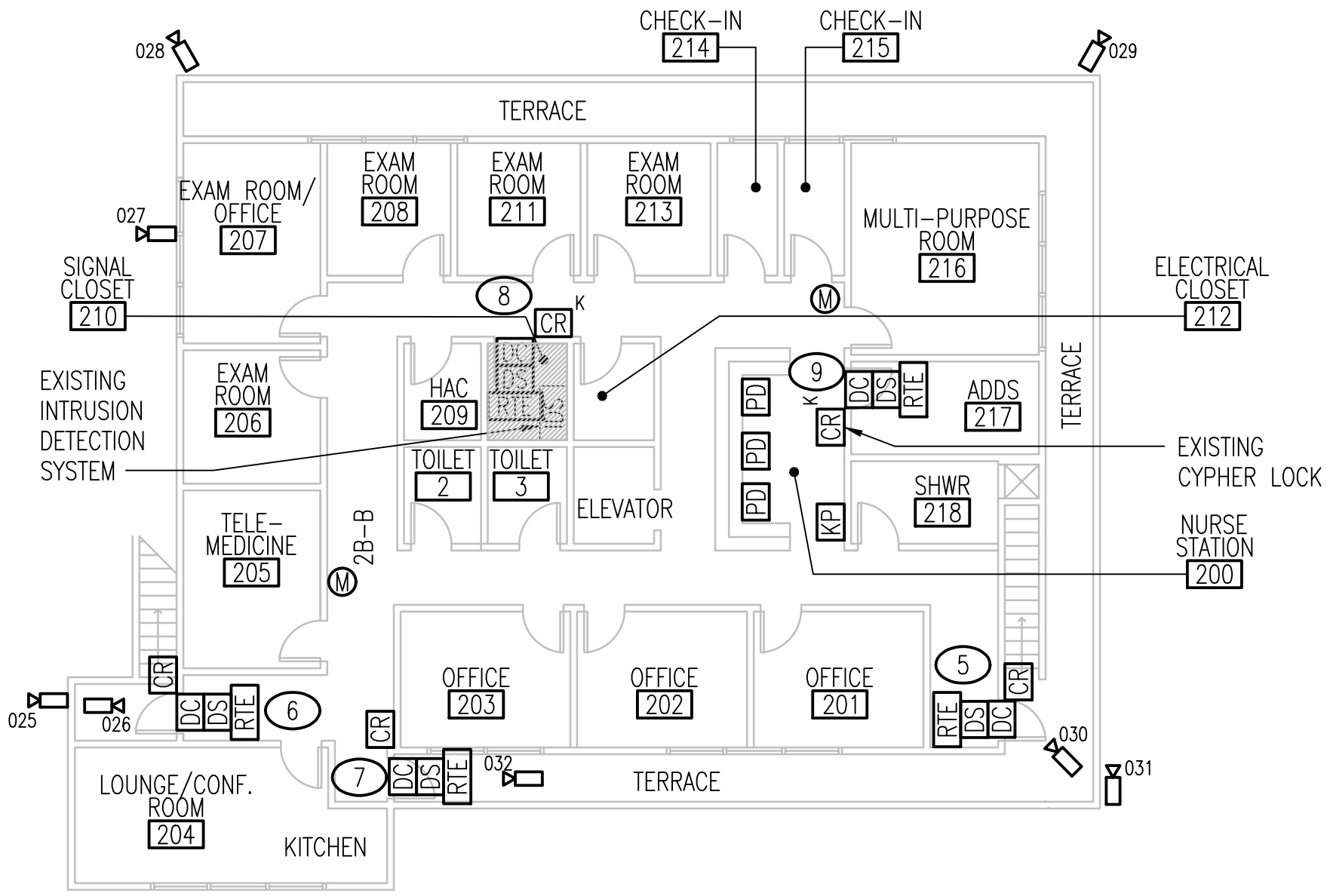
Department of  
Veterance Affairs



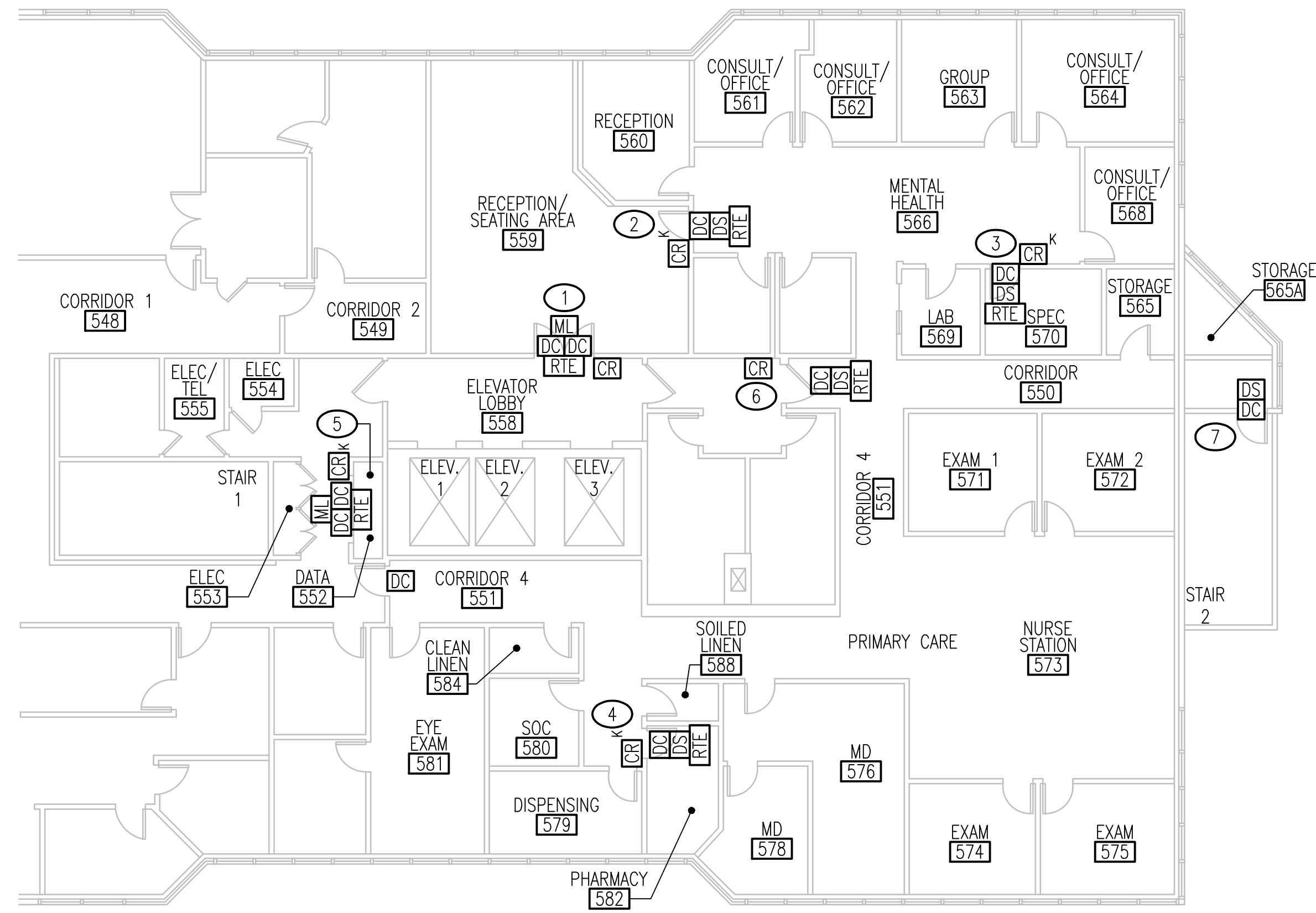
**SPECIAL SYSTEMS PLAN - KONA CBOC - 1ST FLOOR**  
SCALE: 3/32" = 1'-0"



**SPECIAL SYSTEMS PLAN - GUAM CBOC**  
SCALE: 3/32" = 1'-0"



**SPECIAL SYSTEMS PLAN - KONA CBOC - 2ND FLOOR**  
SCALE: 3/32" = 1'-0"



**SPECIAL SYSTEMS PLAN - LEEWARD CBOC**  
SCALE: 3/32" = 1'-0"

3/32" = 1'-0" 5' 0' 5' 10' 20' 30'

			30% SUBMITTAL			Drawing Title SPECIAL SYSTEMS PLAN - CBOC - GUAM, LEEWARD, KONA		Project Title VA MEDICAL CENTER PACIFIC ISLANDS		Date 04-04-2016
						Site: GUAM, LEEWARD, KONA	Building: CBOC	Drawn:	Checked:	Approved:
Revisions		Date	15292	Professional Seal		Location: VAMC, PACIFIC ISLANDS		Approved:		Scale: AS NOTED
										Drawing No. EY109

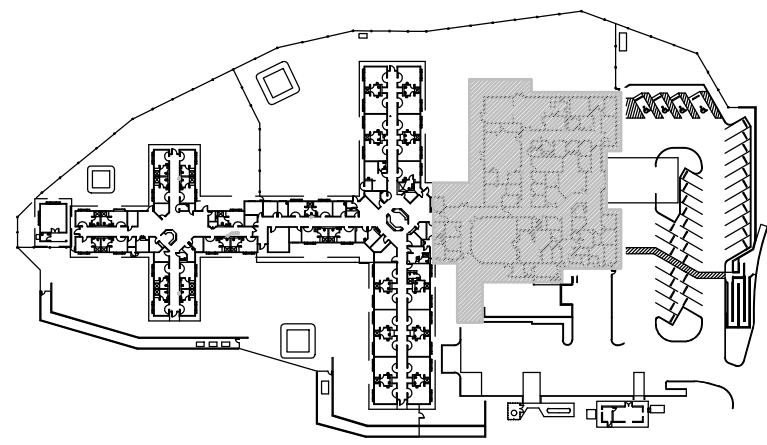


three inches = one foot  
one and one half inches = one foot  
one inch = one foot  
three quarters inch = one foot  
one half inch = one foot  
three eighths inch = one foot  
one quarter inch = one foot  
one eighth inch = one foot

- NOTES THIS SHEET
- 1 STRIKE IS MOUNTED IN MOVEABLE LEAF SIDE OF DOOR (NO FIXED MULLION).
  - 2 TELEPHONE FOR ENTRANCE. CONNECT DOOR RELEASE TO REQUEST TO EXIT INPUT.



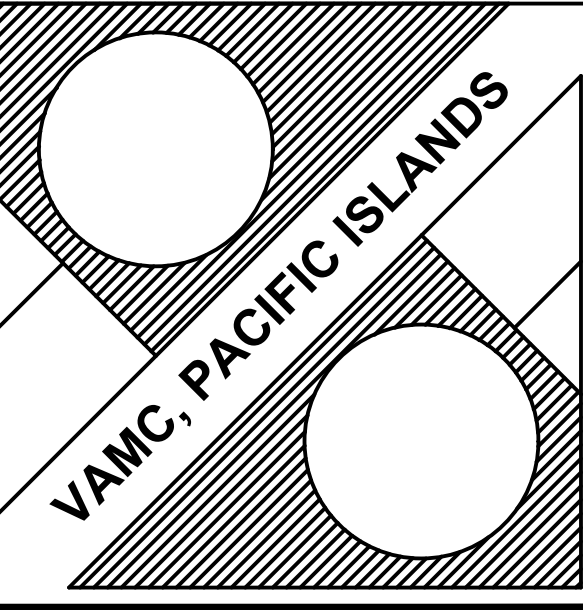
SPECIAL SYSTEMS PLAN - BLDG. CFA - A-WING  
SCALE: 3/32" = 1'-0"



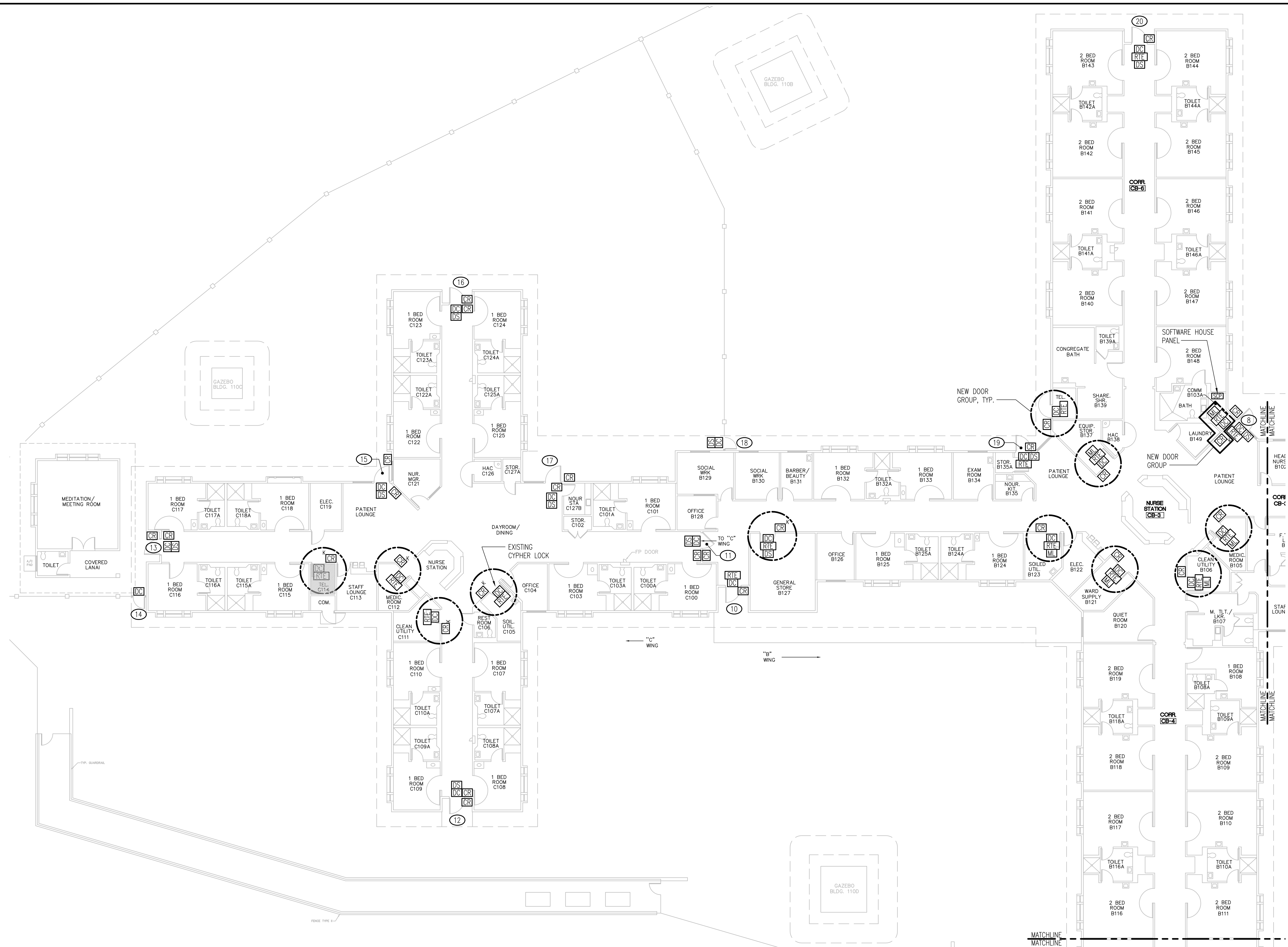
KEYPLAN - BLDG. CFA  
NO SCALE

3/32" = 1'-0" 5' 0' 5' 10' 20' 30'

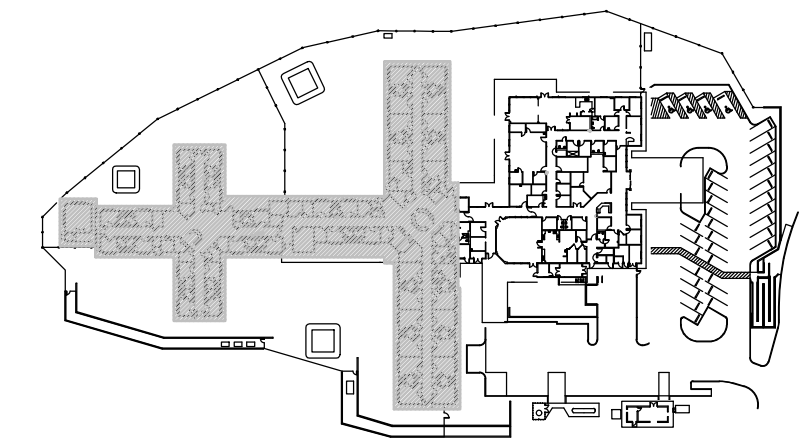
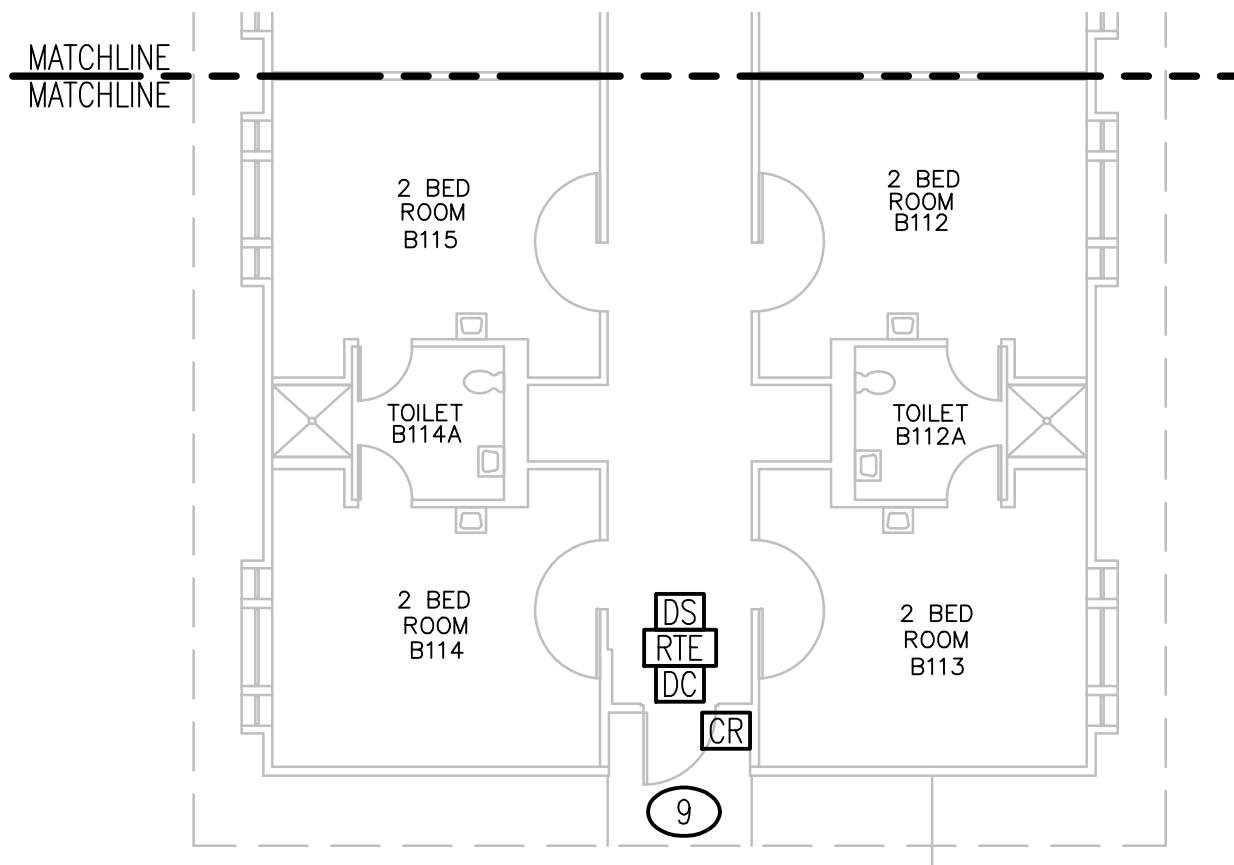
Revisions		Date	15292	Professional Seal	30% SUBMITTAL	Drawing Title SPECIAL SYSTEMS PLAN - BLDG. CFA - A-WING		Project Title VA MEDICAL CENTER PACIFIC ISLANDS			Date 04-04-2016
						Site: HAWAII	Building: CFA	Drawn:	Checked:	Approved:	Project No.
						Location: VAMC, PACIFIC ISLANDS		Approved:		Scale: AS NOTED	Drawing No. EY110A



three inches = one foot  
one and one half inches = one foot  
one inch = one foot  
three quarters inch = one foot  
three eighths inch = one foot  
one quarter inch = one foot  
one eighth inch = one foot  
one eighth inch = one foot

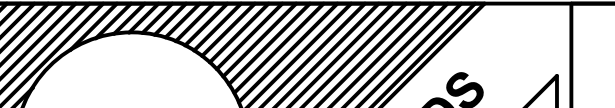



SPECIAL SYSTEMS PLAN - BLDG. CFA - B & C-WING  
SCALE: 3/32" = 1'-0"



KEYPLAN - BLDG. CFA  
NO SCALE

3/32" = 1'-0" 5' 0' 5' 10' 20' 30'

				30% SUBMITTAL		Drawing Title SPECIAL SYSTEMS PLAN - BLDG. CFA - B & C-WING		Project Title VA MEDICAL CENTER PACIFIC ISLANDS			Date 04-04-2016		Department of Veterance Affairs 		
						Site: HAWAII		Building: CFA		Drawn:	Checked:			Approved:	Project No.
						Location: VAMC, PACIFIC ISLANDS		Approved:		Scale: AS NOTED				Drawing No. EY110B	
Revisions		Date	15292	Professional Seal											

VA FORM 08-6231, OCT 1978

A

B

C

D

E

F

three inches = one foot

one and one half inches = one foot

one inch = one foot

one inch = one foot

three quarters inch = one foot

one half inch = one foot

one eighth inch = one foot

one eighth inch = one foot

one quarter inch = one foot

one eighth inch = one foot

one eighth inch = one foot

one eighth inch = one foot

Building: ACC – 1st Floor

	Door Number	Door Location	Reader	R/Pin	Rex	DC	DC DBL	DC Only	DC Only DBL	Existing Lock	Strike	Mag	REXB	Mortise	Hinge	Spec
1	1	Homeless Program (1–A01)		1	1	1				1						
2	2	Corridor By Homeless Program (1–C05)		1	1	1				1						
3	3	Office (1–C19)		1	1	1				1						
4	4	Corridor MH Clinic Outpatient (West)		1	1	1				1						
5	5	Corridor MH Clinic Outpatient (South)		1	1	1				1						
6	6	Mental Health Rehab (1–C11)		1	1	1				1						
7	7	Back Corridor Entry	1		1	1				1						
8	8	Empowerment Center (North Entry) (1–B18)		1	1	1				1						
9	9	MH Clinic Support Svc Corridor (North)		1	1	1				1						
10	10	Empowerment Center (West Entry) (1–B18)		1	1	1				1						
11	11	Corridor (1–B15)		1	1	1				1						
12	12	Resident (1–B14)		1	1	1				1						
13	13	MH Clinic Support Svc Corridor (West Entry)		1	1	1				1						
14	14	Oxygen Room Entry		1	1	1				1						
15	15	Exterior door entry Corridor South	1		1	1				1						
16	16	MH Clinic Staff Corridor Entry South		1	1	1				1						
17	17	MH Clinic Staff Corridor Entry North		1	1	1				1						
18	18	Multipurpose Room (1–A02)		1	1	1				1						
19	26	PGM Support Mental Health (1–A26)		1	1	1				1						
20	(New)	Lobby	1		1											1
21	(New)	Lobby	1		1											1
22	(New)	Security		1	1	1					1					
23	(New)	IT		1	1	1								1	1	
24	(Alarm)	Canteen Snack Shop														
25	(Alarm)	Day Patient Service Door														

Building: ACC – 2nd Floor

	Door Number	Door Location	Reader	R/Pin	Rex	DC	DC DBL	DC Only	DC Only DBL	Existing Lock	Strike	Mag	REXB	Mortise	Hinge	Spec
1	23			1	1	1								1	1	
2	24			1	1	1								1	1	
3	25			1	1	1								1	1	
4	26			1	1	1								1	1	
5	27			1	1	1								1	1	
6	28			1	1	1								1	1	
7	29			1	1	1								1	1	
8	(New)	Reception Desk From Reception Area		1	1	1								1	1	
9	(New)	Reception Desk From 2–C03A		1	1	1								1	1	
10	(New)	2–C04		1	1	1								1	1	
11	(New)	Eye Clinic		1	1	1								1	1	
12	(New)	2–D16 (Telecom)		1	1	1								1	1	
13	(New)	Reception 4 To Exam Rooms		1	1	1								1	1	
14	(New)	Reception 3 To Exam Rooms		1	1	1								1	1	
15	(New)	Reception 2 To Exam Rooms		1	1	1								1	1	
16	(New)	Reception 8 To Exam Rooms		1	1	1								1	1	
17	(New)	Reception 9 To Radiology		1	1	1								1	1	
18	(New)	Office 2A06		1	1	1								1	1	
19	(New)	Pharmacy 2A07		1	1	1								1	1	
20	(New)	2–B45		1	1	1								1	1	
21	(New)	Laboratory		1	1	1								1	1	
22	(New)	Corridor Near 2–B45		1	1	1								1	1	

Building: ACC – 3rd Floor

	Door Number	Door Location	Reader	R/Pin	Rex	DC	DC DBL	DC Only	DC Only DBL	Existing Lock	Strike	Mag	REXB	Mortise	Hinge	Spec
1	19			1	1	1								1	1	
2	20			1	1	1								1	1	
3	21			1	1	1								1	1	
4	22		1		1	1								1	1	
5	(New)	Dental Service		1	1	1								1	1	
6	(New)	Closet 3–D26		1	1	1								1	1	
7	(New)	3–A02		1	1	1								1	1	
8	(New)	Health Information Medical records (3–C02) West		1	1	1								1	1	
9	(New)	Corridor Beside 3D15 (IRMS Office)		1	1	1								1	1	
10	(New)	Health Information Medical records (3–C02) South		1	1	1								1	1	
11	(New)	Administrative Offices North Entry		1	1	1								1	1	
12	(New)	Administrative Offices South Entry		1	1	1								1	1	
13	(New)	Corridor Exam Rms 3–B05B – B05J		1	1	1								1	1	

Building: E-Wing – Basement

	Door Number	Door Location	Reader	R/Pin	Rex	DC	DC DBL	DC Only	DC Only DBL	Existing Lock	Strike	Mag	REXB	Mortise	Hinge	Spec
1	1	Exterior Entry	1		1	1				1						
2	(Alarm Only)	Crawl Space Alarm								3						

Building: E-Wing – 1st Floor

	Door Number	Door Location	Reader	R/Pin	Rex	DC	DC DBL	DC Only	DC Only DBL	Existing Lock	Strike	Mag	REXB	Mortise	Hinge	Spec
1	2	Veterans Service Division Entry		1	1	1								1	1	
2	3	Veterans Service Division Entry From Stairwell		1	1	1								1	1	
3	4	Passage From Army Hospital	1		1		1			1						
4	5	VFW/Purple Heart Entry Corridor	1		1		1			1						
5	6	Engineering Services Exterior	1		1		1			1						
6	7	Engineering Services Exterior Open Room	1		1		1			1						
7	8	Stairwell Entry (Engineering Services)	1		1		1			1						
8	9	Rm 1–B104		1	1	1								1	1	
9	21	Voc Rehab Stair Entry	1		1			1		1						
10	(New)	Waiting Area By Veterans Service Office	1		1			1								1
11	(New)	Engineering Services Corridor Entry		1	1	1					1					
12	(New)	IT Room		1	1	1					1					
13	(Alarm Only)									1						

Building: E-Wing – 2nd Floor

	Door Number	Door Location	Reader	R/Pin	Rex	DC	DC DBL	DC Only	DC Only DBL	Existing Lock	Strike	Mag	REXB	Mortise	Hinge	Spec
1	10	Rm 2–B104		1	1	1								1	1	
2	11	Stair Door To Adjudication Division		1	1	1								1	1	
3	12	Corridor Door To Adjudication		1	1	1								1	1	
4	13	Entry To Medical Research (From Center)		1	1	1								1	1	
5	14	Entry To Medical Research		1	1	1								1	1	
6	15	Stair Entry To Offices 2–C102 To C104		1	1	1								1	1	
7	(New)	Room 2–C100C		1	1	1					1					
8	(Alarm Only)	Corridor To Army Hospital								1						

Building: E-Wing – 3rd Floor

	Door Number	Door Location	Reader	R/Pin	Rex	DC	DC DBL	DC Only	DC Only DBL	Existing Lock	Strike	Mag	REXB	Mortise	Hinge	Spec
1	16	Human Resource Mgmt. (3–B100)		1	1	1								1	1	
2	17	Financial Resources Mgmt. Office (From Center)		1	1	1								1	1	
3	18	Financial Resources Mgmt. Office (Side Entry)		1	1	1								1	1	
4	(New)	Financial Resources (3B105C)		1	1	1								1	1	
5	(New)	Credit Union (3–B101)		1	1	1								1	1	
6	(New)	Human Resource Mgmt (Rm 3–A100)		1	1	1								1	1	
7	(New)	IRM (Rm 3–C105)		1	1	1								1	1	
8	(New)	Rm 3–C104		1	1	1								1	1	
9	(New)	Corridor Passageway (IRMS)		1	1	1								1	1	
10	(New)	IRM Entry		1	1	1								1	1	
11	(New)	IRM Server Room (From Corridor)		1	1	1								1	1	
12	(New)	IRM Server Room (From Office)		1	1	1								1	1	
13	(New)	IRM Office		1	1	1								1	1	
14	(New)	IRM Server Room (From 3–C108)		1	1	1								1	1	
15	(Alarm Only)	Financial Resources Corridor								1						
16	(Alarm Only)	Office 3B106C								1						
17	(Alarm Only)	Office 3B106A								1						
18	(Alarm Only)	Financial Resources Office								1						
19	(Alarm Only)	Financial Resources Office								1						
20	(Alarm Only)	Corridor From Center								1						
21	(Alarm Only)	Central Common Space								1						

Building: E-Wing – 4th Floor

	Door Number	Door Location	Reader	R/Pin	Rex	DC	DC DBL	DC Only	DC Only DBL	Existing Lock	Strike	Mag	REXB	Mortise	Hinge	Spec
1	(New)	Research Department Office		1	1	1								1	1	
2	(New)			1	1	1								1	1	
3	(New)			1	1	1								1	1	
4	(New)			1	1	1								1	1	
5	(New)			1	1	1								1	1	
6	(New)	Stair Entry To Offices Area A		1	1	1					1					
7	(New)	Rm 4–B108		1	1	1					1					
8	(New)	Rm 4–C104		1	1	1					1					
9	(New)	Corridor Entry 4C Area B		1	1	1					1					
10	(New)	Stair Entry To Corridor Area B		1	1	1					1					
11	(New)			1	1	1					1					
12	(Alarm Only)	Assistant Counsel office						1								
13	(Alarm Only)	Chief Of Staff						1								
14	(Alarm Only)							1								
15	(Alarm Only)							1								
16	(Alarm Only)							1								
17	(Alarm Only)							1								
18	(Alarm Only)							1								
19	(New)			1	1	1					1					
20	(New)			1	1	1					1					



A

B

C

D

E

F

three inches = one foot  
one and one half inches = one foot  
one inch = one foot  
one quarter inch = one foot  
three eighths inch = one foot  
one eighth inch = one foot  
one quarter inch = one foot  
one eighth inch = one foot

Building: CFA – A-Wing

	Door Number	Door Location	Reader	R/Pin	Rex	DC	DC DBL	DC Only	DC Only DBL	Existing Lock	Strike	Mag	REXB	Mortise	Hinge	Spec
1	1		1		1	1				1						
2	2	Corridor	1		1		1			1						
3	3	Pharmacy		1	1	1								1	1	
4	3A		1		1	1				1						
5	4	Entry To Corridor	1		1	1				1						
6	5	Dining/Rec. Rm A117	1		1		1			1						
7	6	Staff Lounge	1		1	1				1						
8	7		1		1	1				1						
9	21	Corridor Entry	1		1	1				1						
10	22	Physical Therapy	1		1	1				1						
11	23	Multipurpose A129 West	1		1	1				1						
12	24	Multipurpose A129 North	1		1	1				1						
13	25-Gate								1	1						
14	Gate								1	1						
15	(New)	Tele. A102		1	1	1					1					
16	(New)	Office A105		1	1		1							1	1	
17	(New)	Main Entry	1		1		1									1

Building: CFA – B-Wing

	Door Number	Door Location	Reader	R/Pin	Rex	DC	DC DBL	DC Only	DC Only DBL	Existing Lock	Strike	Mag	REXB	Mortise	Hinge	Spec
1	8	Patient Lounge	1		1	1				1						
2	9	Corridor CB-4	1		1	1				1						
3	20	Corridor CB-6	1		1	1				1						
4	New	Comm B103A		1	1	1								1	1	
5	New	Med Room B105		1	1	1								1	1	
6	New	Clean Utility B106		1	1	1								1	1	
7	New	Ward Supply B121		1	1	1								1	1	
8	New	Sailed Utility B123		1	1	1								1	1	
9	New	Equipment Storage B137		1	1	1								1	1	

Building: CFA – C-Wing

	Door Number	Door Location	Reader	R/Pin	Rex	DC	DC DBL	DC Only	DC Only DBL	Existing Lock	Strike	Mag	REXB	Mortise	Hinge	Spec
1	10	Corridor Entry By B127	1		1	1				1						
2	11	Corridor From Dayroom	2			1				1						
3	12	Corridor Entry By C109	2			1				1						
4	13	Corridor By C117	2			1				1						
5	14-Gate	Gate By Mediation							1	1						
6	15	Patient Lounge	2			1				1						
7	16	Corridor Entry By C123	2			1				1						
8	17	Dayroom/Dining Entry	2			1				1						
9	18-Gate	Gate By B129							1	1						
10	19	Patient Lounge Entry	1		1	1				1						
11	New	Telephone Room B-Wing		1	1	1								1	1	
12	New	General Store B127		1	1	1								1	1	
13	New	Sailed Utility C105		1	1	1								1	1	
14	New	Clean Utility C111		1	1	1								1	1	
15	New	Med Rm C112		1	1	1								1	1	
16	New	Tele Rm C114		1	1	1								1	1	

Building: Guam CBOC

	Door Number	Door Location	Reader	R/Pin	Rex	DC	DC DBL	DC Only	DC Only DBL	Existing Lock	Strike	Mag	REXB	Mortise	Hinge	Spec
1	1	Main	1		1	1										1
2	2	Interior 1		1	1	1					1					
3	3	Interior 2		1	1	1					1					
4	4	IT Closet		1	1	1						1				
5	5	Storage		1	1	1						1				
6	6	Adds Room		1	1	1					1					
7	7	Rear Exit	1		1	1						1				
8	8	Mechanical						1								

Building: Leeward CBOC

	Door Number	Door Location	Reader	R/Pin	Rex	DC	DC DBL	DC Only	DC Only DBL	Existing Lock	Strike	Mag	REXB	Mortise	Hinge	Spec
1	1	Main	1		1		1							1	1	
2	2	Interior 1		1	1	1					1					
3	3	570		1	1	1					1					
4	4	Pharmacy		1	1	1					1					
5	5	IT Closet		1	1		1							1	1	
6	6	Rear Exit	1		1	1		1								
7	7	Stairwell						1			1					

Building: Kona CBOC

	Door Number	Door Location	Reader	R/Pin	Rex	DC	DC DBL	DC Only	DC Only DBL	Existing Lock	Strike	Mag	REXB	Mortise	Hinge	Spec
1	1	Main	1		1	1					1					
2	2	Interior Employee	1		1	1										1
3	3	Exterior Employee	1		1	1					1					
4	4	103	1		1	1					1					
5	5	2nd Floor Entrance	1		1	1					1					
6	6	2nd Floor Back Entrance	1		1	1					1					
7	7	2nd Floor Third Entrance	1		1	1					1					
8	8	IT		1	1	1					1					
9	9	Adds		1	1	1					1					

Building: Airport: PTSD

	Door Number	Door Location	Reader	R/Pin	Rex	DC	DC DBL	DC Only	DC Only DBL	Existing Lock	Strike	Mag	REXB	Mortise	Hinge	Spec
1	1	Main	1			1				1						
2	2	IT		1	1									1	1	
3	3	Interior Entry 1	1		1	1					1					1
4	4	Interior Entry 2	1		1	1					1					1

Building: Airport: Contracts

	Door Number	Door Location	Reader	R/Pin	Rex	DC	DC DBL	DC Only	DC Only DBL	Existing Lock	Strike	Mag	REXB	Mortise	Hinge	Spec
1	1	Main		1	1	1								1	1	1
2	2	Rear Door		1	1	1					1					
3	3	IT		1	1	1								1	1	
4	4	Conference Room						1								1

Building: Airport: Hospital At Home

	Door Number	Door Location	Reader	R/Pin	Rex	DC	DC DBL	DC Only	DC Only DBL	Existing Lock	Strike	Mag	REXB	Mortise	Hinge	Spec
1	1	Main		1	1	1								1	1	
2	2	Exterior		1	1	1								1	1	
3	3	IT		1	1	1								1	1	
4	4	Copy		1	1	1								1	1	

Building: 401

	Door Number	Door Location	Reader	R/Pin	Rex	DC	DC DBL	DC Only	DC Only DBL	Existing Lock	Strike	Mag	REXB	Mortise	Hinge	Spec
1	1	Main		1	1	1								1	1	

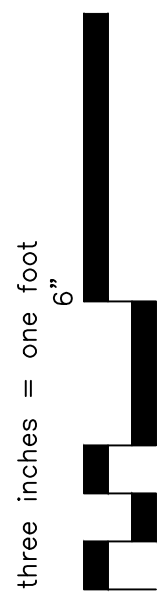
Building: 404

	Door Number	Door Location	Reader	R/Pin	Rex	DC	DC DBL	DC Only	DC Only DBL	Existing Lock	Strike	Mag	REXB	Mortise	Hinge	Spec
1	1	Main	1			1				1				1	1	

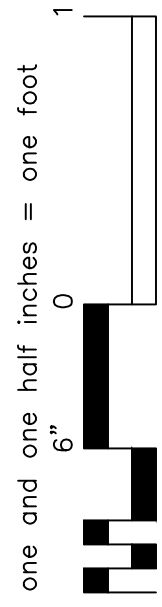
Building: Airport: Research

	Door Number	Door Location	Reader	R/Pin	Rex	DC	DC DBL	DC Only	DC Only DBL	Existing Lock	Strike	Mag	REXB	Mortise	Hinge	Spec
1	1	Front Door	1		1	1						2	1			
2	2	Back Door						1								

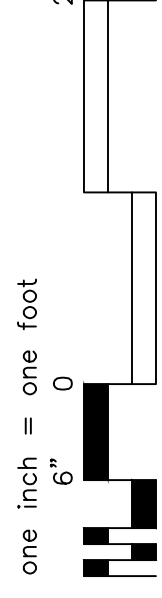
A



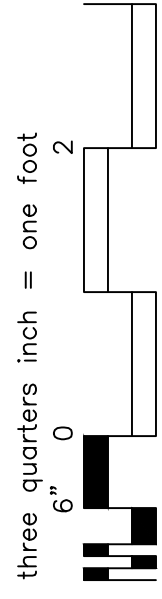
B



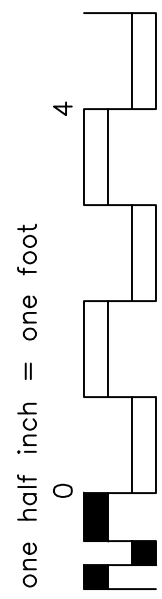
C



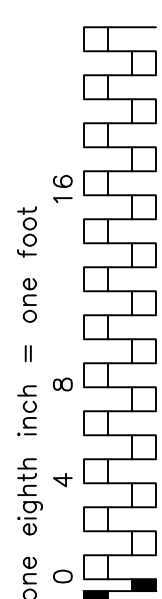
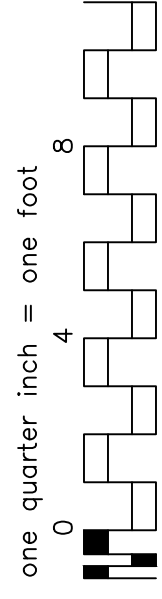
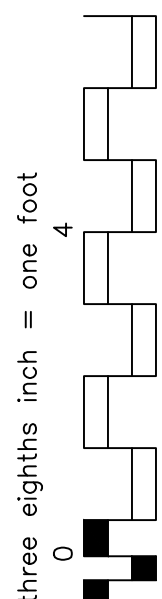
D



E



F



Camera Number	Site	Building	Floor	Room/Area	Interior or Exterior	Coax Connected Fixed Camera (Interior)	Coax Connected PTZ Camera (Interior)	Coax Connected Fixed Camera (Exterior)	Coax Connected PTZ Camera (Exterior)	Replace Coax with IP Camera	IP Camera Manufacturer	Replacement Model P/N	Mounting	Mounting Acc #1	Mounting Acc #2	Mounting Acc #3	Resolution Required	Corridor Format	Varifocal Lens	Midspan Power	Class	Surge Protection Required	Analog Video Display Solution	Analog Video Display Mate	Analog Video Display Model	Media Converter Needed	Encoder Needed	Ethernet Extender	IP Video Display Solution	IP Video Display Mate	IP Video Display Model	Power Location	Switch Type	Switch Closet	Altronix Netway Midspan	Additional Netway Power	Switch Ports Open (no CAT cable)	Additional Notes & Observations
001	HAWAII	ACC	1st	ENTRY	EXTERIOR																																	
002	HAWAII	ACC	1st	OUTSIDE OF ENTRY	EXTERIOR																																LOOKING TOWARD PARKING LOT	
003	HAWAII	ACC	1st	OUTSIDE OF ENTRY	EXTERIOR																																LOOKING TOWARD PARKING LOT	
004	HAWAII	ACC	1st	ENTRY	EXTERIOR																																	
005	HAWAII	ACC	2nd	PHARMACY 2-A07	INTERIOR																																	
006	HAWAII	ACC	2nd	PHARMACY 2-A07	INTERIOR																																	
007	HAWAII	ACC	2nd	2-A07A	INTERIOR																																	
008	HAWAII	ACC	2nd	2-A07B	INTERIOR																																	
009	HAWAII	ACC	2nd	2-A07B	INTERIOR																																	
010	HAWAII	ACC	2nd	2-A07B	INTERIOR																																	
011	HAWAII	ACC	2nd	ENTRY	EXTERIOR																																	
012	GUAM	CBOC	1st	BUILDING EXTERIOR	EXTERIOR																																	
013	GUAM	CBOC	1st	BUILDING EXTERIOR	EXTERIOR																																	
014	GUAM	CBOC	1st	BUILDING EXTERIOR	EXTERIOR																																	
015	GUAM	CBOC	1st	RECEPTION	INTERIOR																																	
016	GUAM	CBOC	1st	RECEPTION	INTERIOR																																	
017	GUAM	CBOC	1st	NURSE STATION	INTERIOR																																	
018	GUAM	CBOC	1st	BUILDING EXTERIOR	EXTERIOR																																	
019	GUAM	CBOC	1st	LOBBY	INTERIOR																																	
020	GUAM	CBOC	1st	BUILDING EXTERIOR	EXTERIOR																																	
021	KONA	CBOC	1st	ENTRY	EXTERIOR																																	
022	KONA	CBOC	1st	WAITING AREA 100	INTERIOR																																	
023	KONA	CBOC	1st	MAIN ENTRANCE	EXTERIOR																																	
024	KONA	CBOC	1st	RECEPTION 101	INTERIOR																																	
025	KONA	CBOC	2nd	BUILDING EXTERIOR	EXTERIOR																																	
026	KONA	CBOC	2nd	STAIR	INTERIOR																																	
027	KONA	CBOC	2nd	BUILDING EXTERIOR	EXTERIOR																																	
028	KONA	CBOC	2nd	BUILDING EXTERIOR	EXTERIOR																																	
029	KONA	CBOC	2nd	BUILDING EXTERIOR	EXTERIOR																																	
030	KONA	CBOC	2nd	TERRACE	EXTERIOR																																	
031	KONA	CBOC	2nd	BUILDING EXTERIOR	EXTERIOR																																	
032	KONA	CBOC	2nd	TERRACE	EXTERIOR																																	
033	AIRPORT	PTSD	1st	MAIN ENTRANCE	INTERIOR																																	
034	AIRPORT	PTSD	1st	MAIN ENTRANCE	INTERIOR																																	
035	AIRPORT	PTSD	1st	OUTSIDE OF IT ROOM	INTERIOR																																	
036	AIRPORT	PTSD	1st	ENTRY 2	INTERIOR																																	
037	AIRPORT	PTSD	1st	ENTRY 1	INTERIOR																																	
038																																						
039																																						
040																																						

Revisions	Date	15292	Professional Seal	Drawing Title CAMERA SCHEDULE		Project Title VA MEDICAL CENTER PACIFIC ISLANDS			Date 04-04-2016				
				Site:		Building:		Drawn:		Checked:		Approved:	
				Location: VAMC, PACIFIC ISLANDS		Approved:		Scale: NONE		Drawing No. EY803			