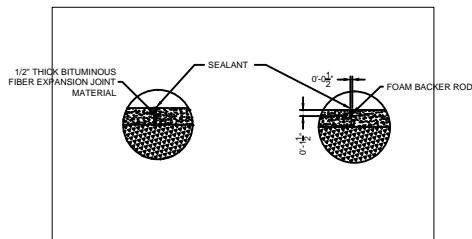


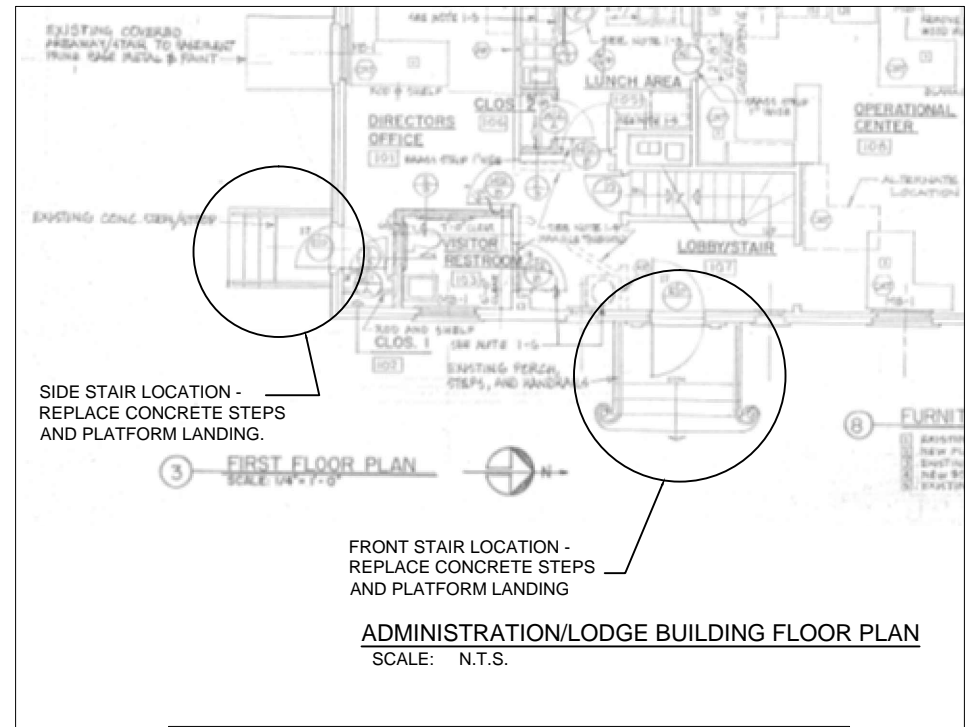
**PARTIAL SITE PLAN - MAINTENANCE BUILDING**  
SCALE: N.T.S.



1

**EXPANSION/CONTROL JOINT DETAILS**

SCALE: 1" = 1'-0"



SIDE STAIR LOCATION -  
REPLACE CONCRETE STEPS  
AND PLATFORM LANDING.

FRONT STAIR LOCATION -  
REPLACE CONCRETE STEPS  
AND PLATFORM LANDING

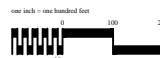
**ADMINISTRATION/LODGE BUILDING FLOOR PLAN**  
SCALE: N.T.S.

**STAIR REPLACEMENTS - PROJECT NOTES:**

1. CAREFULLY REMOVE EXISTING HANDRAILS AND SAVE FOR REINSTALLATION.
2. REMOVE EXISTING CONCRETE STAIR PLATFORM LANDING AND CONCRETE STEPS. REMOVE ALL DEMOLITION MATERIAL FROM THE CEMETERY AND PROPERLY DISPOSE OF AT AN APPROVED LANDFILL. RECYCLE IF POSSIBLE.
3. INSTALL NEW STEEL REINFORCEMENT BARS AS INDICATED ON DRAWINGS "EXISTING FRONT ENTRY STEPS" AND "EXISTING SIDE ENTRY STEPS". THE NEW REINFORCEMENT BARS INTO EXISTING STAIR FOUNDATION STEM WALLS.
4. FORM NEW STAIRS AND PLATFORM LANDING TO MATCH ORIGINAL PER ORIGINAL AS-BUILT DRAWINGS.
5. PLACE NEW 4000 PSI CONCRETE. FINISH, PROTECT AND CURE PER SPECIFICATIONS.
6. RE-INSTALL EXISTING HANDRAIL PER DRAWING DETAILS. USE SELF LEVELING SEALANT IN-LIEU OF LEADITE AS INDICATED ON ORIGINAL AS-BUILT DRAWING DETAILS.

**FINAL FOR CONSTRUCTION**  
JUNE 27, 2016

Revisions	Date



NATIONAL  
CEMETERY  
ADMINISTRATION

Drawing Title <b>SITE PLAN - PAVEMENT REPAIRS - STAIR LOCATIONS</b>		Project Title <b>MISCELLANEOUS CONCRETE REPAIRS</b>		Date 6/27/2016
Approved: Division Chief	Building Number	Checked	Drawn <b>TDK</b>	Project No. 878-16-204
Approved: Service Director	Location SPRINGFIELD NATIONAL CEMETERY	DRAWING NO. <b>L-1</b>		Dwg: 2 Of 4