

4/19/2016

NO	DESCRIPTION	DATE
----	-------------	------

ISSUANCE HISTORY - THIS SHEET

## DRINKING FOUNTAIN NEW WORK PART PLANS

**100% CONSTRUCTION  
DOCUMENTS**


PP-222

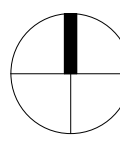
PROJECT PHASE/INCREMENT DESCRIPTION

A.	COMPLETE LAYOUT DRAWINGS SHALL BE REQUIRED AS OUTLINED IN SPECIFICATION SECTION 01 33: SHOP DRAWINGS, PRODUCT DATA AND SAMPLES & 22 05 COMMON WORK FOR PLUMBING CONSTRUCTION WORK SHALL NOT START ON ANY SYSTEM UNTIL THE LAYOUT DRAWINGS HAVE BEEN APPROVED BY THE VA.
B.	EXISTING PIPE SIZES AND EXACT ROUTING ARE BASED ON AS-BUILT DRAWINGS AND LIMITED FIELD SURVEY. COMMENSURATE WITH GENERAL NOTE 1, CONTRACTOR SHALL FIELD-VERIFY ALL PIPE DIMENSIONS ASSOCIATED WITH THE IN-LOCATIONS AND HIGHLIGHT ANY DISCREPANCY BETWEEN INDICATED SIZE AND AS-BUILT CONDITION.
C.	ALL PIPE WORK SHALL BE COMPLETED AT MIN. REGARDLESS OF VALVE LOCATION, TO MINIMIZE OCCURRENCE OF DEAD LEG PIPING IN ACCORDANCE WITH VA DIRECTIVE 1061.
D.	FIELD VERIFY EXISTING CONDITIONS PRIOR TO BEGINNING WORK.
E.	FOR FIXTURE TYPE AND CONNECTION SIZES REFER TO THE FIXTURE SCHEDULE ON P800.
F.	COORDINATE ROUTING OF PLUMBING PIPING WITH ALL TRADES BEFORE WORK BEGINS.
G.	THE CONTRACTOR IS RESPONSIBLE FOR ALL CUTTING AND PATCHING REQUIRED FOR INSTALLATION OF PIPING AND ACCESSORIES. ALL PENETRATIONS THROUGH FIRE RATED WALLS SHALL BE PROPERLY FIRESTOPPED. METHOD OF FIRE STOPPING SHALL BE REVIEWED AND APPROVED BY ARCHITECT PRIOR TO INSTALLATION.
H.	PLUMBING PIPING SHOWN IS SCHEMATIC IN NATURE. ROUTING MAY BE REVISED PER LOCAL CODES AND AUTHORITY HAVING JURISDICTION AND SHALL BE COORDINATED WITH ALL TRADES.
I.	CONTRACTOR SHALL COORDINATE ALL PIPING CONNECTIONS PRIOR TO INSTALLATION AND INSTALL PER MANUFACTURER'S RECOMMENDATIONS.
J.	FOR ADDITIONAL PIPE SIZES SEE PLUMBING ISOMETRIC DIAGRAMS.
K.	ALL VALVES ARE TO BE LOCATED IN AN ACCESSIBLE LOCATION. ANY VALVES THAT WILL REQUIRE AN ACCESS PANEL SHALL BE COORDINATED WITH THE ARCHITECTURAL TEAM PRIOR TO INSTALLATION.

1. NEW 1/2" COLD WATER SUPPLY PIPING ABOVE CEILING, DROP PIPING IN WALL TO NEW ELECTRIC WATER COOLER. PROVIDE ISOLATION VALVE IN ACCESSIBLE LOCATION. CONNECT TO EXISTING COLD WATER RISER, 3/4" OR LARGER.
2. NEW 1-1/4" SANITARY PIPING IN WALL. TIE IN TO EXISTING RISER AS INDICATED.
3. APPROXIMATE LOCATION OF AVAILABLE VENT, COLD WATER, AND SANITARY CONNECTIONS. FIELD VERIFY ALL TIE-IN LOCATIONS. PROVIDE TIE-IN LOCATIONS ON UNWATERMAINTAINED DRAWINGS IN ACCORDANCE WITH NEW WORK GENERAL NOTE (A) AND SPECIFICATIONS.
4. PROVIDE 1-1/4" VENT WHERE ELECTRIC WATER COOLER TRAP IS GREATER THAN 5'-0" FROM NEAREST VENT CONNECTION. NO VENT REQUIRED WHERE TRAP IS CLOSER THAN 5'-0" PER CODE.
5. NEW 1-1/4" SANITARY ON FLOOR BELOW. FIELD VERIFY TIE-IN LOCATION.



<h1 style="text-align: center;">WASHINGTON DC VETERANS AFFAIRS MEDICAL CENTER</h1> <div style="display: flex; justify-content: center; align-items: center;">  <div style="border: 1px solid black; padding: 5px; text-align: center;"> Department of Veterans Affairs </div> </div>	
Approved: Medical Center Director	Date
Approved: Medical Center Associate Director	Date
Approved: Medical Center Chief of Facility Management Service	Date
Approved: Medical Center Chief of Safety Service	Date
Approved: Medical Center Chief of Infection Control	Date



NO	DESCRIPTION	DATE
----	-------------	------

ISSUANCE HISTORY - THIS SHEET		
-------------------------------	--	--


## PLUMBING WATER RISE DIAGRAM

**100% CONSTRUCTION  
DOCUMENTS**

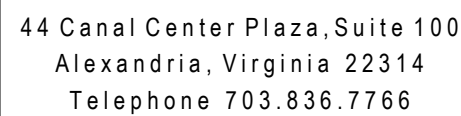
PP-300

PROJECT PHASE/INCREMENT DESCRIPTION	6	7	8



<h1 style="text-align: center;">WASHINGTON DC VETERANS AFFAIRS MEDICAL CENTER</h1> <div style="text-align: center;">  <div style="border: 1px solid black; padding: 5px; display: inline-block;"> Department of Veterans Affairs </div> </div>	
Approved: Medical Center Director	Date: _____
Approved: Medical Center Associate Director	Date: _____
Approved: Medical Center Chief of Facility Management Service	Date: _____
Approved: Medical Center Chief of Safety Service	Date: _____
Approved: Medical Center Chief of Infection Control	Date: _____



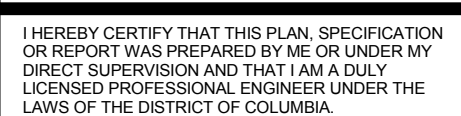


**ENVIRONMENTAL ENGINEERING  
CONSULTANTS**

SPECIAL PATHOGEN  
LABORATORY  
1401 FORBES AVE, STE 20  
PITTSBURGH, PA 1521  
(412) 281-533

DC VA MEDICAL  
CENTER  
50 IRVING ST  
NW  
WASHINGTON  
DC 20422

# UPDATE DOMESTIC WATER SYSTEM FOR LEGIONELLA PREVENTION



I HEREBY CERTIFY THAT THIS PLAN, SPECIFICATION OR REPORT WAS PREPARED BY ME OR UNDER MY DIRECT SUPERVISION AND THAT I AM A DULY LICENSED PROFESSIONAL ENGINEER UNDER THE LAWS OF THE DISTRICT OF COLUMBIA.

NAME: EDWARD D. CLEMENTS  
DATE: 13 APRIL 2016  
REGISTRATION NUMBER: PE907927

ISSUANCE HISTORY - THIS SHEET

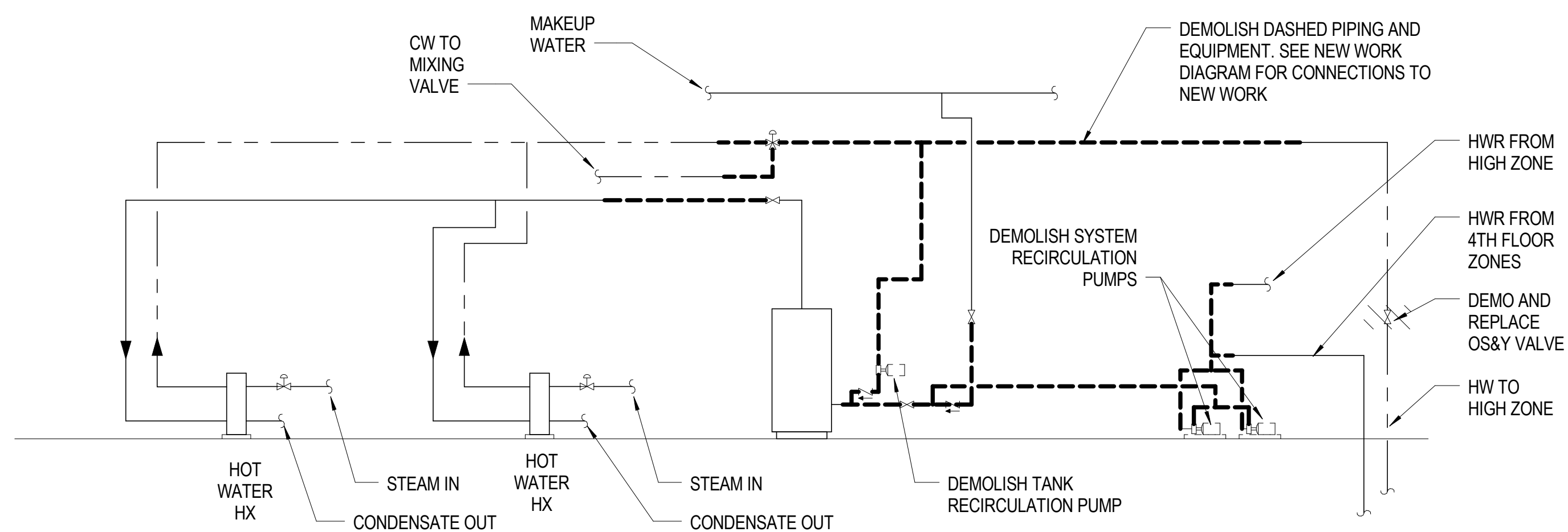
HGA NO: 3819-001-0

## PLUMBING WATER RISE DIAGRAM

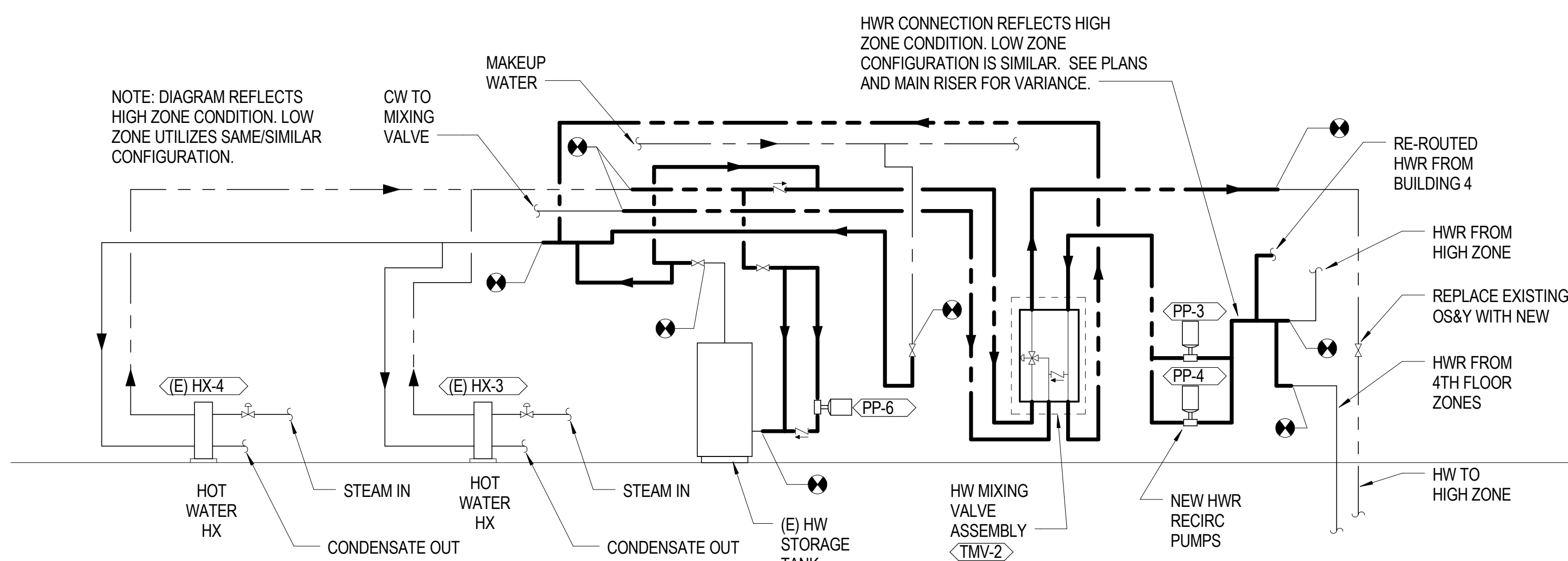
DATE: April 13, 201

**100% CONSTRUCTION  
DOCUMENTS**


# PP-301



2 MER-1 HW PLANT RISER DIAGRAM - DEMO  
NTS



1 MER-1 HW PLANT RISER DIAGRAM- NEW WORK  
NTS

<h1 style="text-align: center;">WASHINGTON DC VETERANS AFFAIRS MEDICAL CENTER</h1> <div style="text-align: center;">  <div style="border: 1px solid black; padding: 5px; display: inline-block;"> Department of Veterans Affairs </div> </div>	
Approved: Medical Center Director	Date
Approved: Medical Center Associate Director	Date
Approved: Medical Center Chief of Facility Management Service	Date
Approved: Medical Center Chief of Safety Service	Date
Approved: Medical Center Chief of Infection Control	Date







44 Canal Center Plaza, Suite 100  
Alexandria, Virginia 22314  
Telephone 703.836.7766

**ENVIRONMENTAL ENGINEERING  
CONSULTANT**

SPECIAL PATHOGENS  
LABORATORY  
1401 FORBES AVE, STE 209  
PITTSBURGH, PA 15219  
(412) 281-5335

DC VA MEDICAL  
CENTER  
50 IRVING ST.  
NW,  
WASHINGTON,  
DC 20422  
UPDATE DOMESTIC  
WATER SYSTEM FOR  
LEGIONELLA  
PREVENTION



I HEREBY CERTIFY THAT THIS PLAN, SPECIFICATION OR REPORT WAS PREPARED BY ME OR UNDER MY DIRECT SUPERVISION AND THAT I AM A DULY LICENSED PROFESSIONAL ENGINEER UNDER THE LAWS OF THE DISTRICT OF COLUMBIA.



NAME: EDWARD D. CLEMENTS  
DATE: 13 APRIL 2018  
REGISTRATION NUMBER: BE907891

△ NO	DESCRIPTION	DATE
------	-------------	------

ISSUANCE HISTORY - THIS SHEET

HGA NO: 3819-001-0

## EQUIPMENT SCHEDULES

DATE: April 13, 201

**100% CONSTRUCTION DOCUMENTS**

# PP-500

PROJECT PHASE/INCREMENT DESCRIPTION

### WATER ANALYZER SCHEDULE (WA)

MARK	LOCATION	ANALYZES	STYLE	SYSTEM	MOUNTING	BASIS OF DESIGN		REMARKS
						MANUFACTURER	MODEL	
WA-1	MER1	pH, TEMP, TDS, OZONE, TURBIDITY, DO, RDO, CONDUCTIVITY, ORP	PIPE INSERTION	DOMESTIC WATER SERVICE	PIPE	THERMO SCIENTIFIC	AQUAPRO	SEE NOTES
WA-2	MER6	pH, TEMP, TDS, OZONE, TURBIDITY, DO, RDO, CONDUCTIVITY, ORP	PIPE INSERTION	DOMESTIC WATER SERVICE	PIPE	THERMO SCIENTIFIC	AQUAPRO	SEE NOTES
NOTES: 1. ANALYZER TO BE WALL MOUNTED NEAR WA INSERTION POINT. 2. ANALYZER TO BE CONNECTED TO THE BAS. 3. ANALYZER TO BE INSTALLED PER MANUFACTURER'S RECOMMENDATIONS.								

### PLUMBING PUMP SCHEDULE (PP)

MARK	LOCATION	SYSTEM	SERVING	OPERATION	MOUNTING	MATERIAL	EACH PUMP				HEADER	BASIS OF DESIGN		REMARKS	
							FLOW (GPM)	HEAD (FT)	MOTOR			SIZE	MANUFACTURER		MODEL
									HP	RPM					
PP-1	MER1	HWR	BUILDING 1 LOW ZONE	DUPLEX w/ PP-2	INLINE	BRONZE	30	32	1	1500-4450	2"	BELL & GOSSETT	ECOCIRCXL36-45	HOT WATER RECIRCULATION. SEE NOTES 1,2,3,4,5.	
PP-2	MER1	HWR	BUILDING 1 LOW ZONE	DUPLEX w/ PP-1	INLINE	BRONZE	30	32	1	1500-4450	2"	BELL & GOSSETT	ECOCIRCXL36-45	HOT WATER RECIRCULATION. SEE NOTES 1,2,3,4,5.	
PP-3	MER1	HWR	BUILDING 1 HIGH ZONE	DUPLEX w/ PP-4	INLINE	BRONZE	30	32	1	1500-4450	2"	BELL & GOSSETT	ECOCIRCXL36-45	HOT WATER RECIRCULATION. SEE NOTES 1,2,3,4,5.	
PP-4	MER1	HWR	BUILDING 1 HIGH ZONE	DUPLEX w/ PP-3	INLINE	BRONZE	30	32	1	1500-4450	2"	BELL & GOSSETT	ECOCIRCXL36-45	HOT WATER RECIRCULATION. SEE NOTES 1,2,3,4,5.	
PP-5	MER1	HWR	MER 1 LOW TANK	SIMPLEX	INLINE	BRONZE	30	32	1 1/2	1500-3500	2"	BELL & GOSSETT	ECOCIRCXL20-35	HOT WATER RECIRCULATION. SEE NOTES 1,2,3,4,5.	
PP-6	MER1	HWR	MER 1 HIGH TANK	SIMPLEX	INLINE	BRONZE	15	15	1 1/2	1500-3500	2"	BELL & GOSSETT	ECOCIRCXL20-35	HOT WATER RECIRCULATION. SEE NOTES 1,2,3,4,5.	
PP-7	BLDG 4 CRAWL SPACE	HWR	BUILDING 4	DUPLEX w/ PP-8	INLINE	BRONZE	30	32	1	1500-4450	1-1/2"	BELL & GOSSETT	ECOCIRCXL36-45	HOT WATER RECIRCULATION. SEE NOTES 1,2,3,4,5.	
PP-8	BLDG 4 CRAWL SPACE	HWR	BUILDING 4	DUPLEX w/ PP-7	INLINE	BRONZE	30	32	1	1500-4450	1"	BELL & GOSSETT	ECOCIRCXL36-45	HOT WATER RECIRCULATION. SEE NOTES 1,2,3,4,5.	
PP-9	MER8	HWR	BUILDING 6	DUPLEX w/ PP-10	INLINE	BRONZE	30	32	1	1500-4450	1-1/2"	BELL & GOSSETT	ECOCIRCXL36-45	HOT WATER RECIRCULATION. SEE NOTES 1,2,3,4,5.	
PP-10	MER8	HWR	BUILDING 6	DUPLEX w/ PP-9	INLINE	BRONZE	30	32	1	1500-4450	1-1/2"	BELL & GOSSETT	ECOCIRCXL36-45	HOT WATER RECIRCULATION. SEE NOTES 1,2,3,4,5.	

NOTES:

- SEE ELECTRICAL SCHEDULES OR PLANS FOR VOLTAGE AND PHASE INFORMATION.
- PIPE RECIRCULATION PUMP WITH A CHECK VALVE ON THE DISCHARGE SIDE OF THE PUMP.
- HOT WATER RECIRCULATION PUMP TO BE CONTROLLED BY AN AQUASTAT THAT WILL TURN PUMP ON AT 110 DEGREES F. AND TURN OFF PUMP AT 120 DEGREES F.
- PLUMB RECIRCULATION PUMP WITH SHUT OFF VALVES ON THE INLET AND DISCHARGE SIDE OF PUMP. PLUMB PUMP WITH BYPASS AND SHUT-OFF VALVE.
- PLUMB RECIRCULATION PUMP WITH THERMOMETER NEXT TO AQUASTAT.

### PLUMBING FIXTURE AND CONNECTION SCHEDULE (F)

FIXTURE NO.	FIXTURE TYPE	FIXTURE DESCRIPTION & BASIS OF DESIGN						NOTE NUMBER	RIM MOUNTING HEIGHT	WASTE	VENT	SUPPLY CW	HW
DF-N	ELECTRIC WATER COOLER	FIXTURE: ELKAY NO. LZSTL8S5C WALL-MOUNT, UNIT SHALL DELIVER 8.0 GPH OF 50 DEG F AMBIENT AND 80 DEG F INLET WATER, 3/8" IPS WATER INLET. DUAL HEIGHT (ADA + STANDING) CHILLER: INTEGRAL CHILLER ELECTRICAL: 115V, 3.2 AMPS ACCESSORIES:						1	36"	1-1/4"	1-1/2"	1/2"	-
NOTES:		1. VERIFY FINAL MOUNTING HEIGHT WITH DESIGN TEAM PRIOR TO INSTALLATION.											

### THERMOSTATIC MIXING VALVE SCHEDULE (TMV)

		FLOW	PRESS DROP	INLET TEMP	OUTLET TEMP	CW INLET SIZE	HW INLET SIZE	HW OUTLET SIZE	BASIS OF DESIGN		REMARKS
MARK	LOCATION	(GPM)	(PSIG)	(DEG F)	(DEG F)	(IN)	(IN)	(IN)	MANUFACTURER	MODEL	
TMV-1	MER1- LOW ZONE	96.4	10	140	110	4	4	4	POWERS	INTELLUSTATION - LFIS200	SEE NOTES.
TMV-2	MER1- HIGH ZONE	119.1	10	140	110	4	4	4	POWERS	INTELLUSTATION - LFIS200	SEE NOTES.
TMV-3	MER6	81.7	10	140	110	4	4	4	POWERS	INTELLUSTATION - LFIS150	SEE NOTES.


NOTES: 1. SEE ELECTRICAL SCHEDULES OR PLANS FOR VOLTAGE AND PHASE INFORMATION.  
2. ASSE 1017 APPROVED.  
3. DOWNSTREAM ANTISCALD SHUTOFF. DIGITAL TEMP MONITOR, SENSOR, SOLENOID VALVE.  
4. PREFABRICATING RACK SYSTEM WITH PIPING CONNECTIONS.  
5. REFER TO PLAN NOTES AND DETAIL 1/PP-400 FOR ADDITIONAL REQUIREMENTS

**WATER METER SCHEDULE (WM)**

MARK	LOCATION	TYPE	SYSTEM	SIZE	RANGE (GPM)	MAX LOSS (PSI)	STYLE	STRAINER	TEST PLUG	BASIS OF DESIGN			
										MANUFACTURER	MODEL	TRANSMITTER	
WM-1	MR1	ULTRASONIC	WATER SERVICE	8"	0-1000	0	CLAMP ON	NO	NO	SIEMENS	SITRANS FUS1010	7ME6910-1AA10-1AA0	1.2, 3 & 4.5
WM-2	MR1	ELECTROMAGNETIC	CW MAKE UP	4"	0-1000	0	IN LINE	NO	NO	SIEMENS	MAG5000	7ME6910-1AA10-1AA0	1.2, 3 & 4.5
WM-3	MR1	ELECTROMAGNETIC	CW MAKE UP	4"	0-1000	0	IN LINE	NO	NO	SIEMENS	MAG5000	7ME6910-1AA10-1AA0	1.2, 3 & 4.5
WM-4	MR1	ELECTROMAGNETIC	HW SUPPLY	4"	0-1000	0	IN LINE	NO	NO	SIEMENS	MAG5000	7ME6910-1AA10-1AA0	1.2, 3 & 4.5
WM-5	MR1	ELECTROMAGNETIC	HW SUPPLY	4"	0-1000	0	IN LINE	NO	NO	SIEMENS	MAG5000	7ME6910-1AA10-1AA0	1.2, 3 & 4.5
WM-6	MR1	ELECTROMAGNETIC	RHW	2"	0-1000	0	IN LINE	NO	NO	SIEMENS	MAG5000	7ME6910-1AA10-1AA0	1.2, 3 & 4.5
WM-7	MR1	ELECTROMAGNETIC	RHW	2"	0-1000	0	IN LINE	NO	NO	SIEMENS	MAG5000	7ME6910-1AA10-1AA0	1.2, 3 & 4.5
WM-8	MR1	ELECTROMAGNETIC	RHW	3"	0-1000	0	IN LINE	NO	NO	SIEMENS	MAG5000	7ME6910-1AA10-1AA0	1.2, 3 & 4.5
WM-9	MR1	ELECTROMAGNETIC	RHW	3"	0-1000	0	IN LINE	NO	NO	SIEMENS	MAG5000	7ME6910-1AA10-1AA0	1.2, 3 & 4.5
WM-10	4TH FLOOR REMOTE LOCATION	ULTRASONIC	HW DISTRIBUTION	1"	0-1000	0	CLAMP ON	NO	NO	SIEMENS	SITRANS FUS1010	7ME6910-1AA10-1AA0	1.2, 3 & 4.5
WM-11	MR6	ULTRASONIC	WATER SERVICE	6"	0-1000	0	CLAMP ON	NO	NO	SIEMENS	SITRANS FUS1010	7ME6910-1AA10-1AA0	1.2, 3 & 4.5
WM-12	MR6	ELECTROMAGNETIC	CW MAKE UP	3"	0-1000	0	IN LINE	NO	NO	SIEMENS	MAG5000	7ME6910-1AA10-1AA0	1.2, 3 & 4.5
WM-13	MR6	ELECTROMAGNETIC	CW MAKE UP	3"	0-1000	0	IN LINE	NO	NO	SIEMENS	MAG5000	7ME6910-1AA10-1AA0	1.2, 3 & 4.5
WM-14	MR6	ELECTROMAGNETIC	HW SUPPLY	3"	0-1000	0	IN LINE	NO	NO	SIEMENS	MAG5000	7ME6910-1AA10-1AA0	1.2, 3 & 4.5
WM-15	MR6	ELECTROMAGNETIC	HW SUPPLY	3"	0-1000	0	IN LINE	NO	NO	SIEMENS	MAG5000	7ME6910-1AA10-1AA0	1.2, 3 & 4.5
WM-16	MR6	ELECTROMAGNETIC	RHW	1"	0-1000	0	IN LINE	NO	NO	SIEMENS	MAG5000	7ME6910-1AA10-1AA0	1.2, 3 & 4.5
WM-17	2ND FLOOR REMOTE LOCATION	ULTRASONIC	HW DISTRIBUTION	1"	0-1000	0	CLAMP ON	NO	NO	SIEMENS	SITRANS FUS1010	7ME6910-1AA10-1AA0	1.2, 3 & 4.5

NOTES:

1. PROVIDE STRAIGHT PIPE INSTALLATION DISTANCES PER MANUFACTURER, NO BYPASS.
2. INSTALL METER WITH CONTACT SIGNAL FOR BUILDING AUTOMATION SYSTEM.
3. BUILDING AUTOMATION SYSTEM TO MONITOR CURRENT FLOW RATE, TOTAL DAILY FLOW RATE, MONTHLY FLOW RATE, AND ANNUAL FLOW RATE.
4. WATER METER TRANSMITTER TO BE WALL MOUNTED WITH IDENTIFICATION OF WHAT SYSTEM IS BEING METERED.
5. FINAL WATER METER LOCATIONS TO BE DETERMINED BY THE VA'S ENGINEERING TEAM.

<h1 style="text-align: center;">WASHINGTON DC VETERANS AFFAIRS MEDICAL CENTER</h1> <div style="display: flex; justify-content: center; align-items: center;">  <div style="border: 1px solid black; padding: 5px;"> Department of Veterans Affairs </div> </div>	
Approved: Medical Center Director	Date
Approved: Medical Center Associate Director	Date
Approved: Medical Center Chief of Facility Management Service	Date
Approved: Medical Center Chief of Safety Service	Date
Approved: Medical Center Chief of Infection Control	Date





**KEYNOTES:**

1. REMOVE EXISTING HWR PUMP IN CRAWLSPACE. EXISTING PUMP CIRCUIT SHALL REMAIN. CONNECT NEW HWR DUPLEX PUMP PACKAGE CONTROLLER FOR PP-7 AND PP-8 TO EXISTING PUMP CIRCUIT. PUMP PACKAGE IS LEAD/LAG; ONE PUMP IS IN OPERATION.



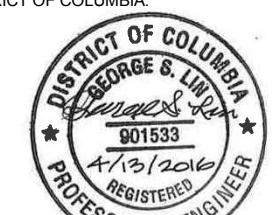
© COPYRIGHT HAMMILL, GREEN AND ABRAHAMSON, INC.

EP-100

DC VA MEDICAL  
CENTER  
50 IRVING ST  
NW  
WASHINGTON  
DC 20422  
UPDATE DOMESTIC  
WATER SYSTEM FOR  
LEGIONELLA  
PREVENTION



I HEREBY CERTIFY THAT THIS PLAN, SPECIFICATION OR REPORT WAS PREPARED BY ME OR UNDER MY DIRECT SUPERVISION AND THAT I AM A DULY LICENSED PROFESSIONAL ENGINEER UNDER THE LAWS OF THE DISTRICT OF COLUMBIA.



NAME: GEORGE S. LIN  
DATE: 4/13/2018  
REGISTRATION NUMBER: 901623

[illegible]

HGA NO: 3819-001-0

**FIRST LEVEL  
POWER PLAN  
OVERALL**

DATE: April 13, 201

**100% CONSTRUCTION DOCUMENTS**

EP-110

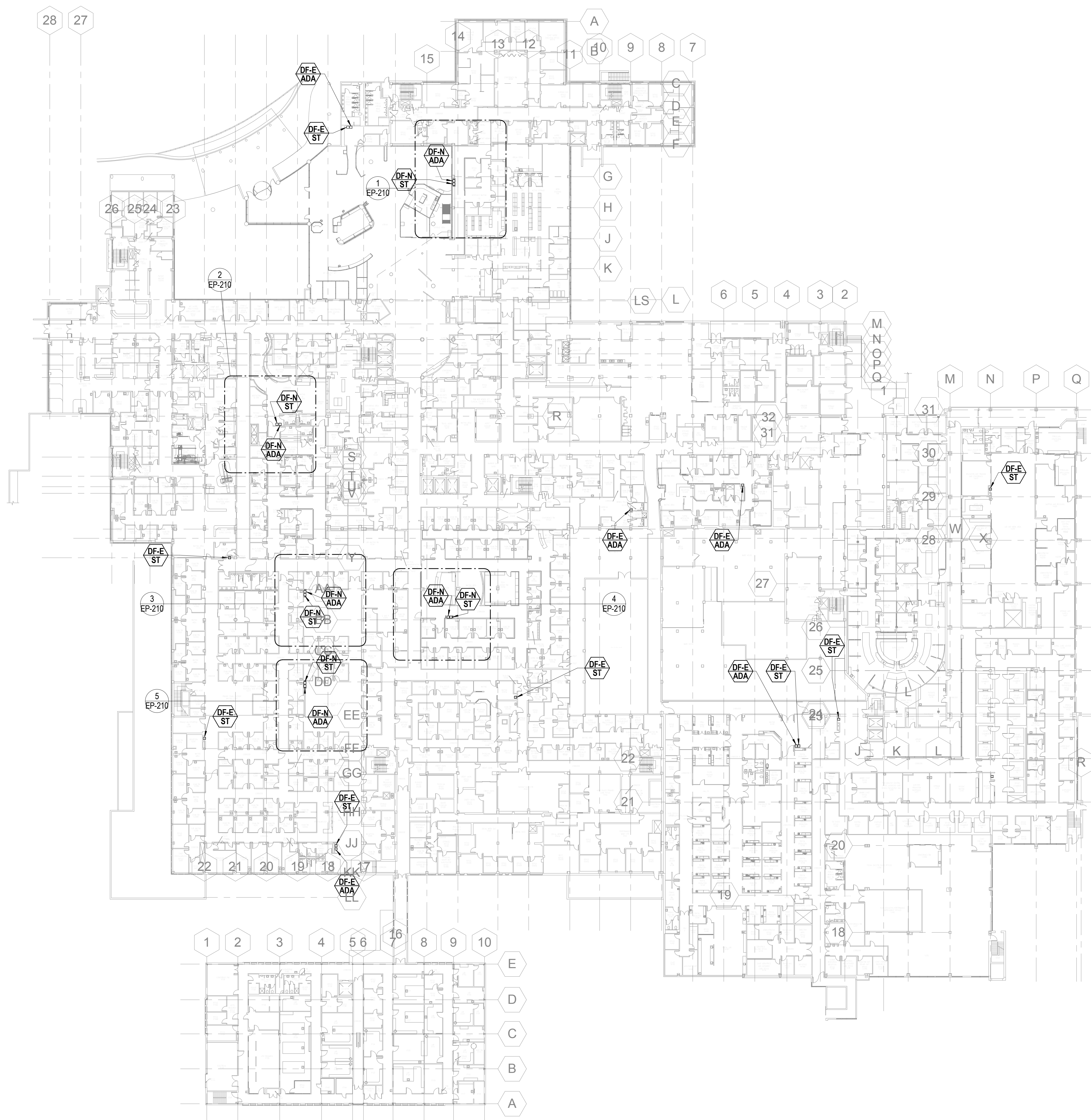
GENERAL NOTES:

A. COORDINATE DRINKING FOUNTAIN RECEPTACLE LOCATION WITH PLUMBING CONTRACTOR.


B. PROVISION OF GFCI CIRCUIT BREAKER FOR DRINKING FOUNTAIN IS PER NEC 2014 - ARTICLES 422.5 AND 422.52.

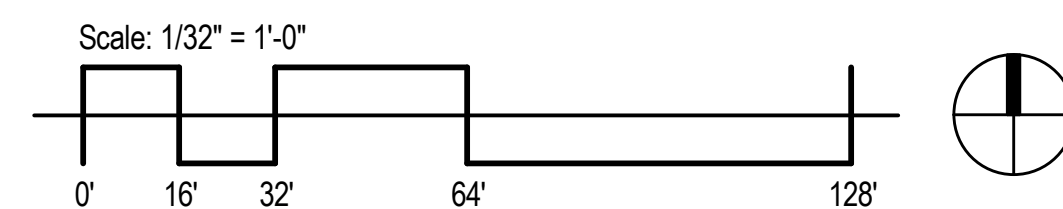
C. ALL DEVICES IN FINISHED AREAS ARE TO BE RECESSED FLUSH WITHIN WALLS EXCEPT WHERE REQUIRED TO BE SURFACE MOUNTED ON PRECAST CONCRETE WALLS. IN UNFINISHED AREAS (E.G. PLUMBING CHASES, JANITORS CLOSETS, ELECTRICAL ROOMS, MECHANICAL ROOMS, AND ETC.) DEVICES AND CONDUIT MAY BE SURFACE MOUNTED

D. CONDUIT AND WIRING MAY NOT BE SHOWN GRAPHICALLY ON THE PLANS. HOWEVER IT SHALL BE PROVIDED COMPLETE AS REQUIRED BASED ON IDENTIFICATION OF CIRCUIT NUMBERS, RELAY NUMBERS, SPECIFIED MINIMUM CONDUIT SIZE, SPECIFIED MINIMUM CONDUCTOR SIZES, AND/OR SPECIFIED MINIMUM GROUNDING.

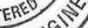


1 FIRST LEVEL POWER PLAN  
1/32" = 1'-0"

<h1 style="text-align: center;">WASHINGTON DC VETERANS AFFAIRS MEDICAL CENTER</h1> <div style="display: flex; justify-content: center; align-items: center;">  <div style="border: 1px solid black; padding: 5px;"> Department of Veterans Affairs </div> </div>	
Approved: Medical Center Director	Date
Approved: Medical Center Associate Director	Date
Approved: Medical Center Chief of Facility Management Service	Date
Approved: Medical Center Chief of Safety Service	Date
Approved: Medical Center Chief of Infection Control	Date








NO	DESCRIPTION	DATE
----	-------------	------

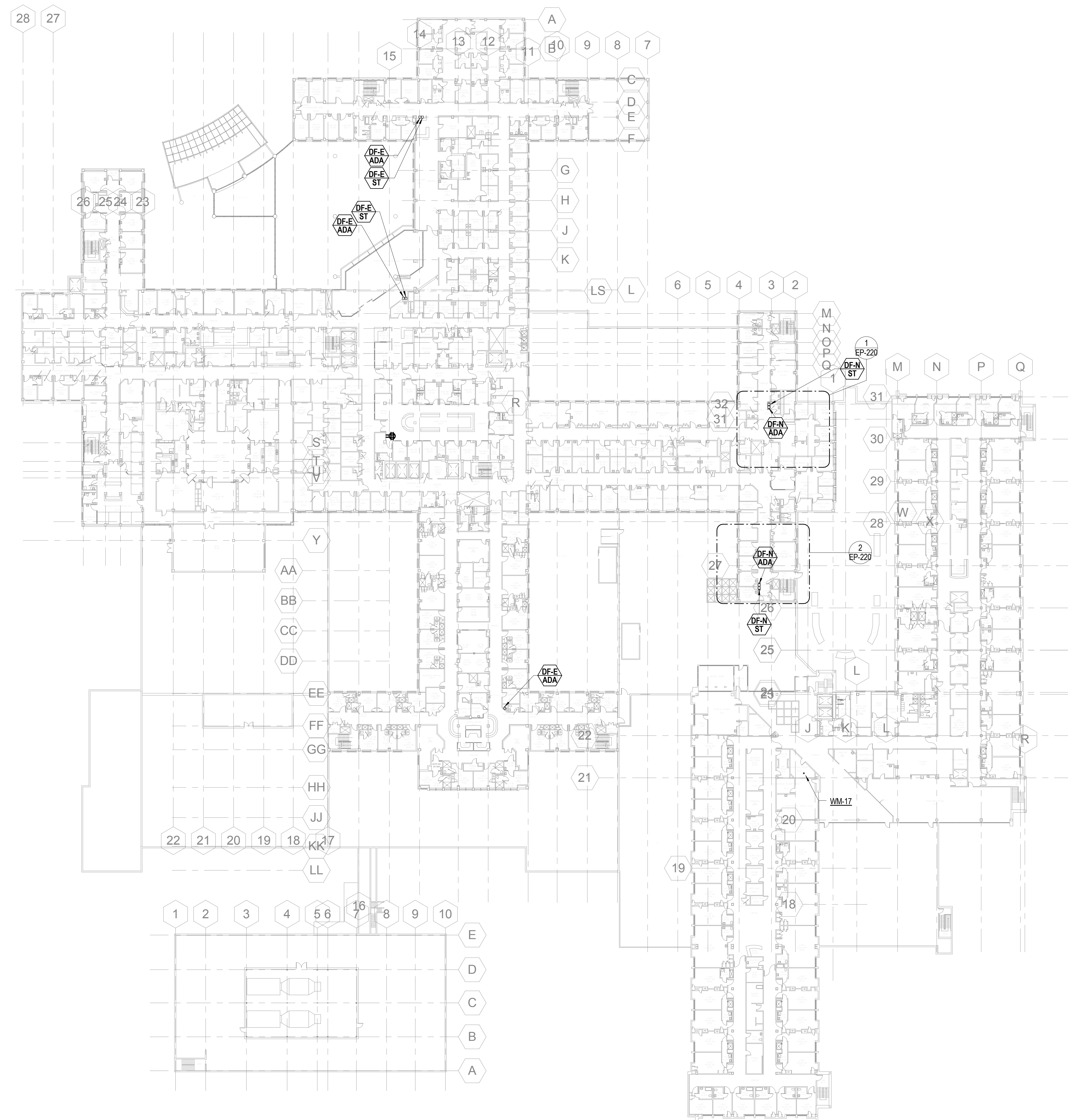
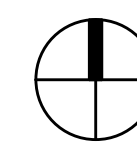
ISSUANCE HISTORY - THIS SHEET

**SECOND LEVEL  
POWER PLAN  
OVERALL**

**100% CONSTRUCTION DOCUMENTS**

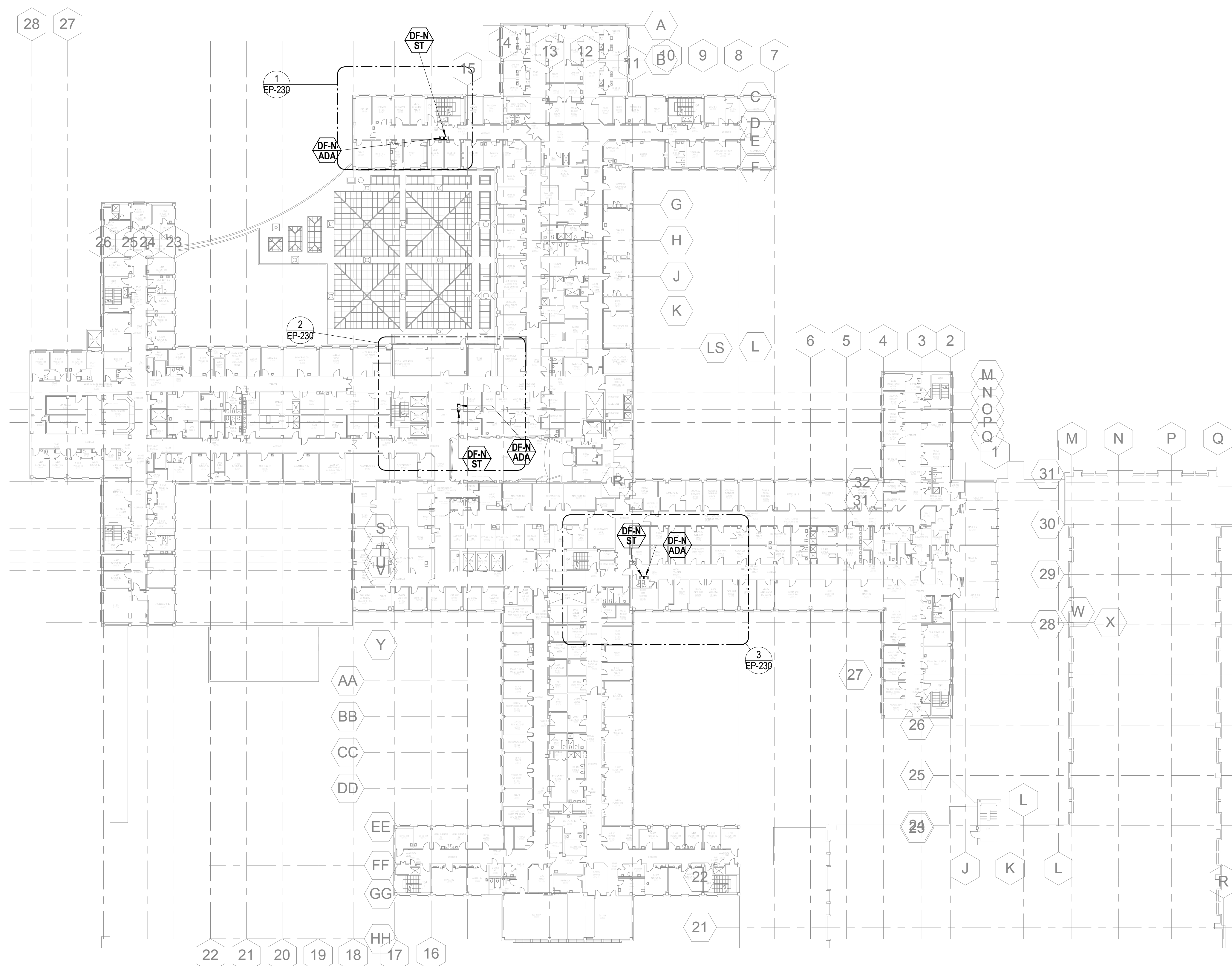
EP-120

<h1 style="text-align: center;">WASHINGTON DC VETERANS AFFAIRS MEDICAL CENTER</h1> <div style="display: flex; justify-content: center; align-items: center;">  <div style="border: 1px solid black; padding: 5px; text-align: center;">             Department of Veterans Affairs           </div> </div>	
Approved: Medical Center Director	Date
Approved: Medical Center Associate Director	Date
Approved: Medical Center Chief of Facility Management Service	Date
Approved: Medical Center Chief of Safety Service	Date
Approved: Medical Center Chief of Infection Control	Date




1 SECOND LEVEL POWER PLAN - OVERALL  
1/32" = 1'-0"

D. CONDUIT AND WIRING MAY NOT BE SHOWN GRAPHICALLY ON THE PLANS. HOWEVER IT SHALL BE PROVIDED COMPLETE AS REQUIRED BASED ON IDENTIFICATION OF CIRCUIT NUMBERS, RELAY NUMBERS, SPECIFIED MINIMUM CONDUIT SIZE, SPECIFIED MINIMUM CONDUCTOR SIZES, AND/OR SPECIFIED MINIMUM GROUNDING.



Scale:  $1/32'' = 1'-0''$

<h1 style="text-align: center;">WASHINGTON DC VETERANS AFFAIRS MEDICAL CENTER</h1> <div style="display: flex; justify-content: center; align-items: center; gap: 20px;">  <div style="border: 1px solid black; padding: 5px; text-align: center;"> Department of Veterans Affairs </div> </div>	
Approved: Medical Center Director	Date: _____
Approved: Medical Center Associate Director	Date: _____
Approved: Medical Center Chief of Facility Management Service	Date: _____
Approved: Medical Center Chief of Safety Service	Date: _____
Approved: Medical Center Chief of Infection Control	Date: _____

NO	DESCRIPTION	DATE
----	-------------	------


[illegible]

HGA NO:	3819-001-00
---------	-------------

DATE: April 13, 2016

EP-130





NO	DESCRIPTION	DATE
----	-------------	------

ISSUANCE HISTORY - THIS SHEET		
-------------------------------	--	--

**FOURTH LEVEL  
POWER PLAN  
OVERALL**

**100% CONSTRUCTION DOCUMENTS**

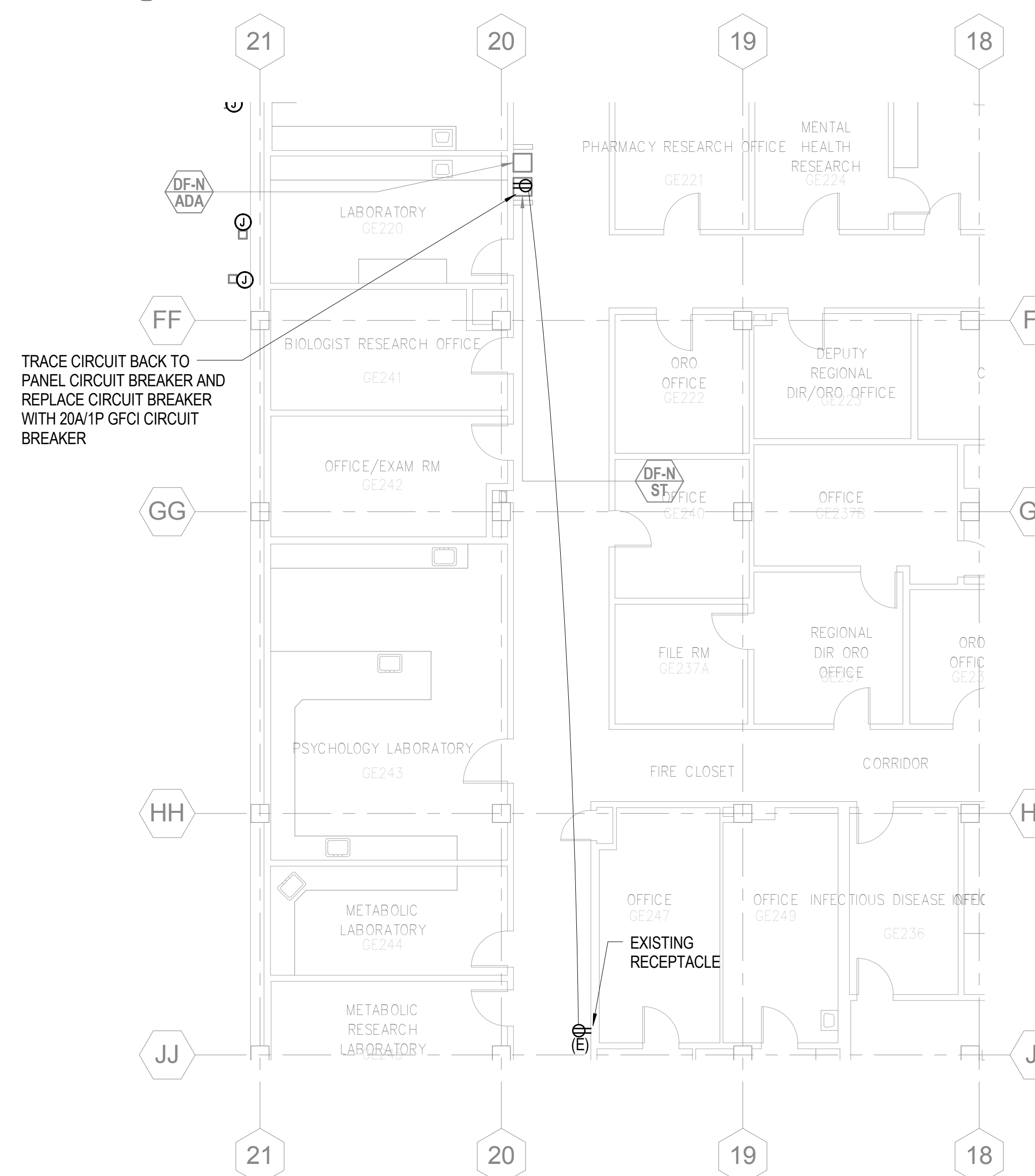
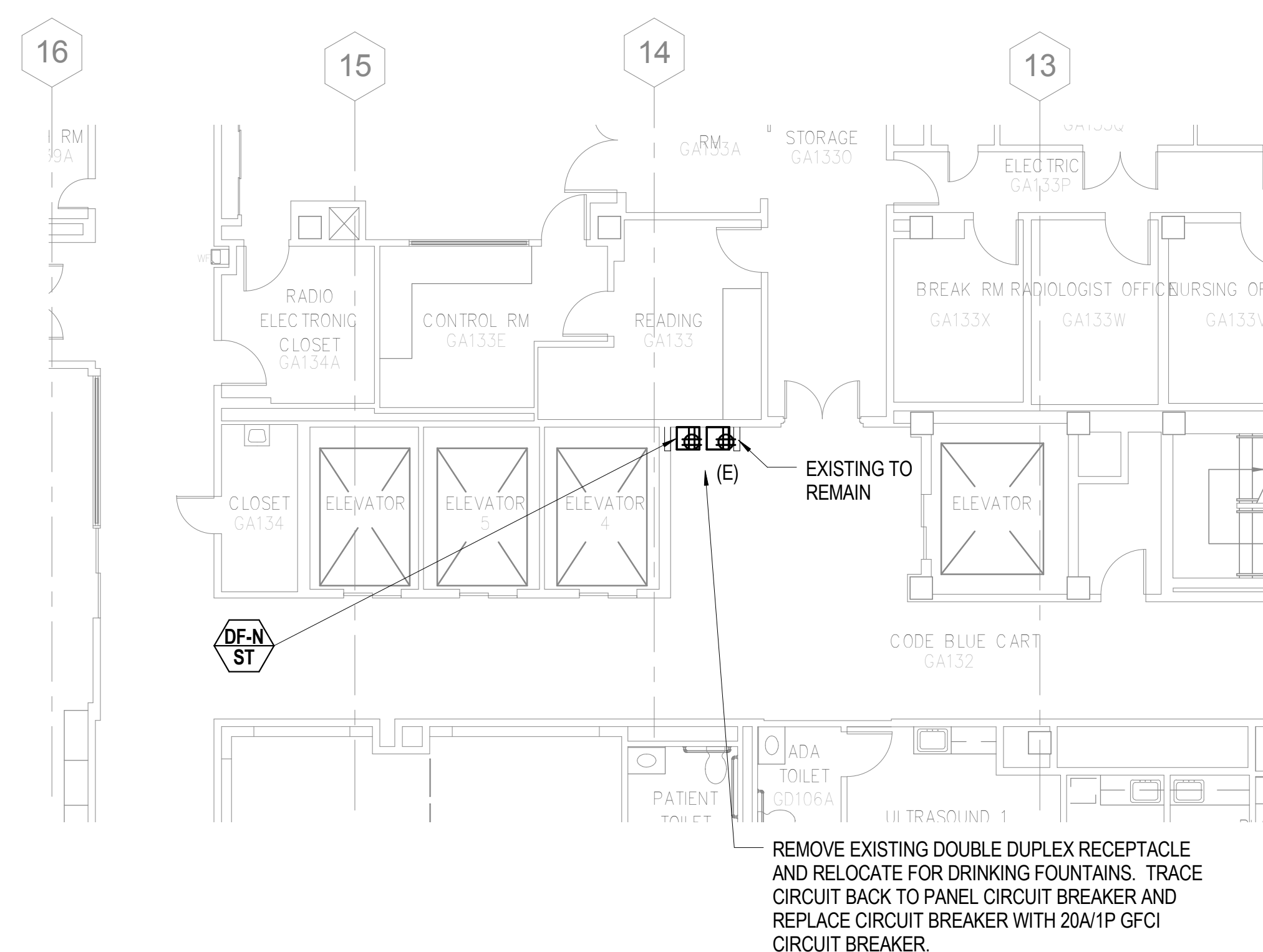
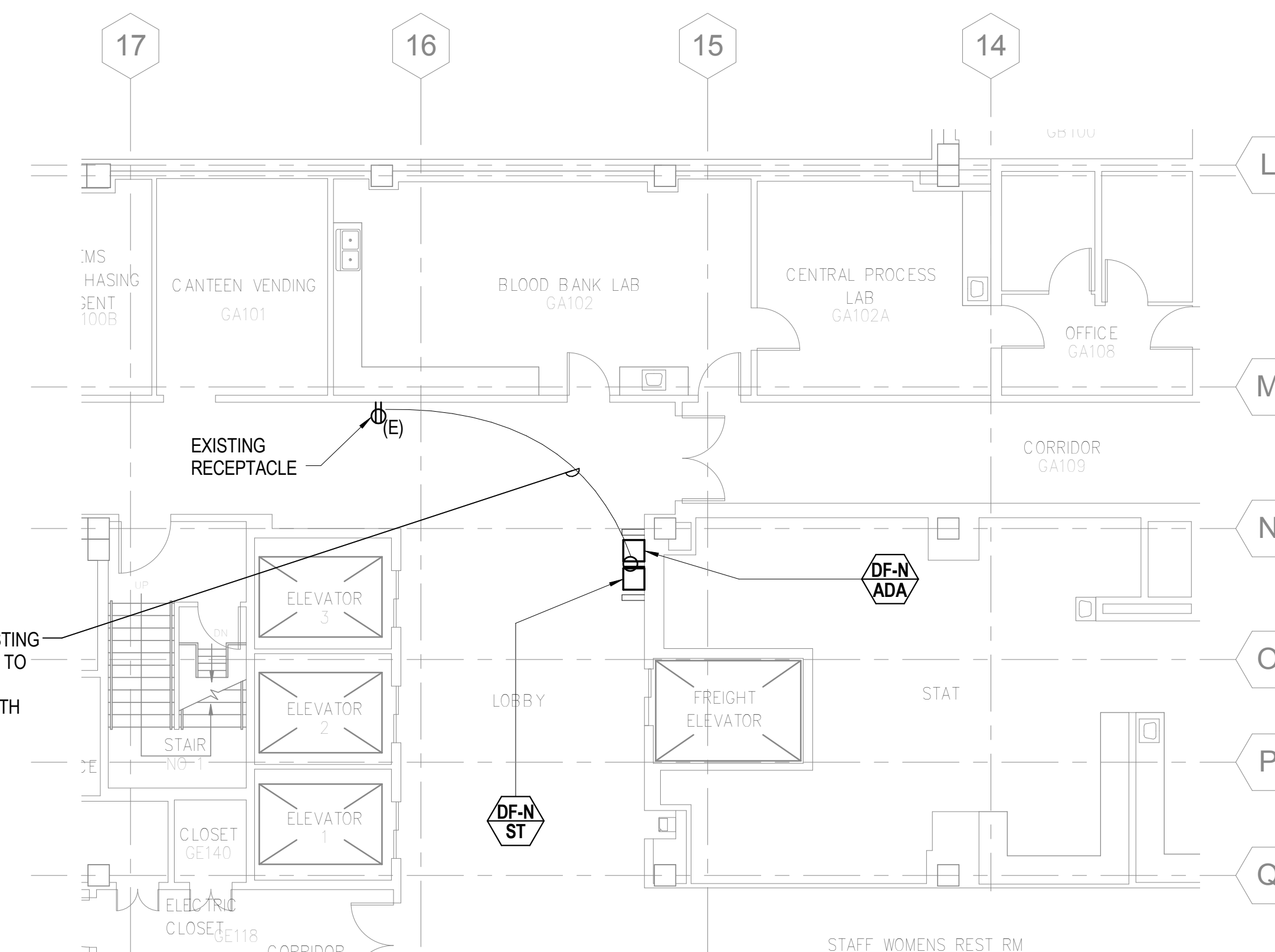
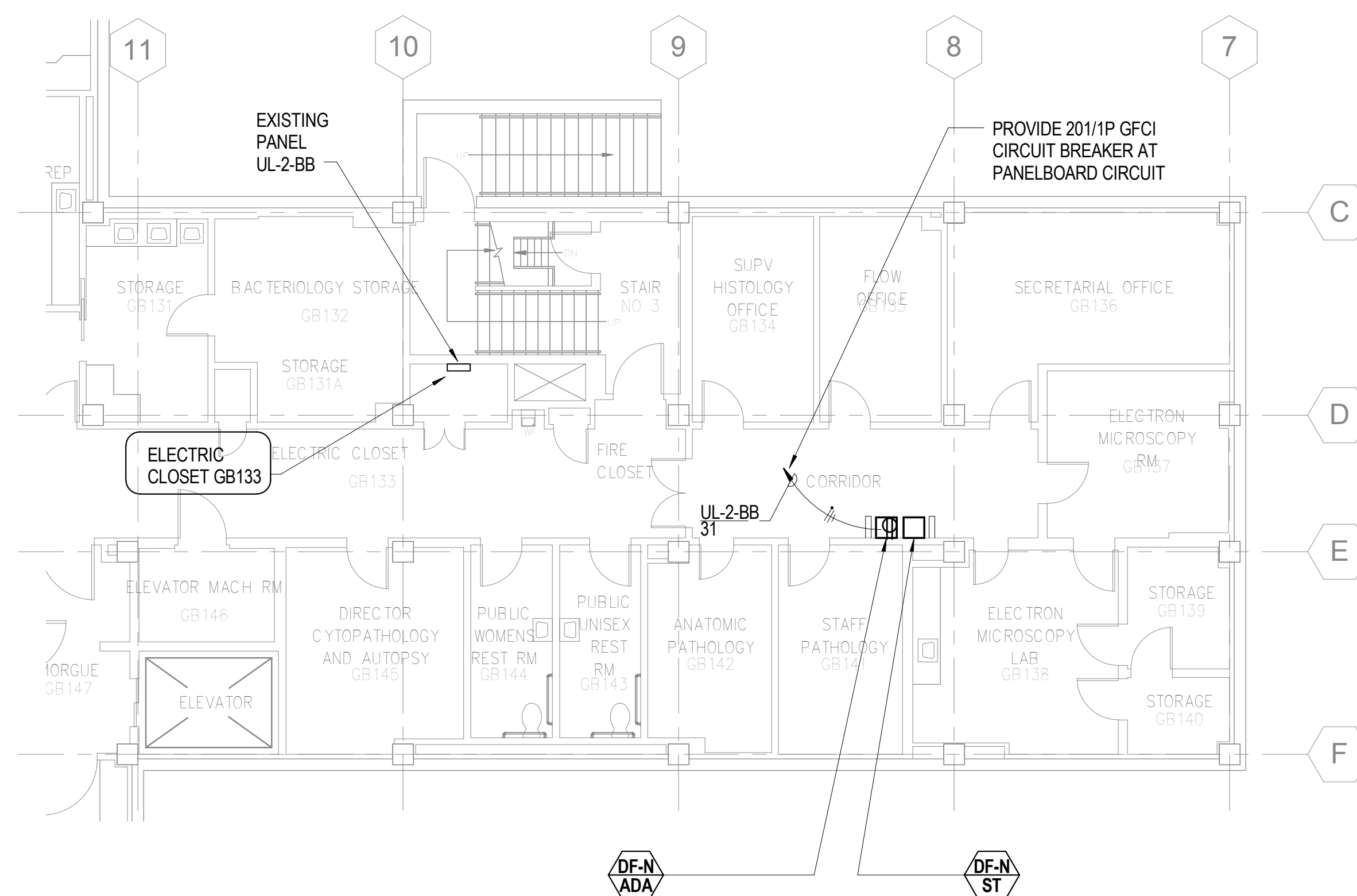
EP-140

D. CONDUIT AND WIRING MAY NOT BE SHOWN GRAPHICALLY ON THE PLANS. HOWEVER IT SHALL BE PROVIDED COMPLETE AS REQUIRED BASED ON IDENTIFICATION OF CIRCUIT NUMBERS, RELAY NUMBERS, SPECIFIED MINIMUM CONDUIT SIZE, SPECIFIED MINIMUM CONDUCTOR SIZES, AND/OR SPECIFIED MINIMUM GROUNDING.



Scale:  $1/32" = 1'-0"$

0' 16' 32' 64' 128'



GENERAL NOTES:

A. COORDINATE DRINKING FOUNTAIN RECEPTACLE LOCATION WITH PLUMBING CONTRACTOR.

B. PROVISION OF GFCI CIRCUIT BREAKER FOR DRINKING FOUNTAIN IS PER NEC 2014 - ARTICLES 422.5 AND 422.52.

C. ALL DEVICES IN FINISHED AREAS ARE TO BE RECESSED FLUSH WITHIN WALLS EXCEPT WHERE REQUIRED TO BE SURFACE MOUNTED ON PRECAST CONCRETE WALLS. IN UNFINISHED AREAS (E.G. PLUMBING CHASES, JANITORS CLOSETS, ELECTRICAL ROOMS, MECHANICAL ROOMS, AND ETC.) DEVICES AND CONDUIT MAY BE SURFACE MOUNTED

D. CONDUIT AND WIRING MAY NOT BE SHOWN GRAPHICALLY ON THE PLANS, HOWEVER IT SHALL BE PROVIDED COMPLETE AS REQUIRED BASED ON IDENTIFICATION OF CIRCUIT NUMBERS, RELAY NUMBERS, SPECIFIED MINIMUM CONDUIT SIZE, SPECIFIED MINIMUM CONDUCTOR SIZES, AND/OR SPECIFIED MINIMUM GROUNDING.

# hGA.

44 Canal Center Plaza, Suite 100  
Alexandria, Virginia 22314  
Telephone 703.836.7766

**ENVIRONMENTAL ENGINEERING  
CONSULTANT**

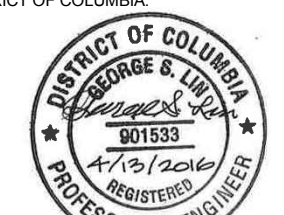
SPECIAL PATHOGENS  
LABORATORY  
1401 FORBES AVE, STE 209  
PITTSBURGH, PA 15219  
(412) 281-5335

DC VA MEDICAL  
CENTER  
50 IRVING ST.  
NW,  
WASHINGTON,  
DC 20422

UPDATE DOMESTIC  
WATER SYSTEM FOR  
LEGIONELLA  
PREVENTION



I HEREBY CERTIFY THAT THIS PLAN, SPECIFICATION OR REPORT WAS PREPARED BY ME OR UNDER MY DIRECT SUPERVISION AND THAT I AM A DULY LICENSED PROFESSIONAL ENGINEER UNDER THE LAWS OF THE DISTRICT OF COLUMBIA.



NAME: GEORGE S. LIN  
DATE: 4/13/2018  
REGISTRATION NUMBER: 001523

NO	DESCRIPTION	DATE
----	-------------	------

[illegible]

---

HGA NO:	3819-001-00
---------	-------------

**BASEMENT  
LEVEL POWER  
PLAN - PARTIAL  
PLANS**

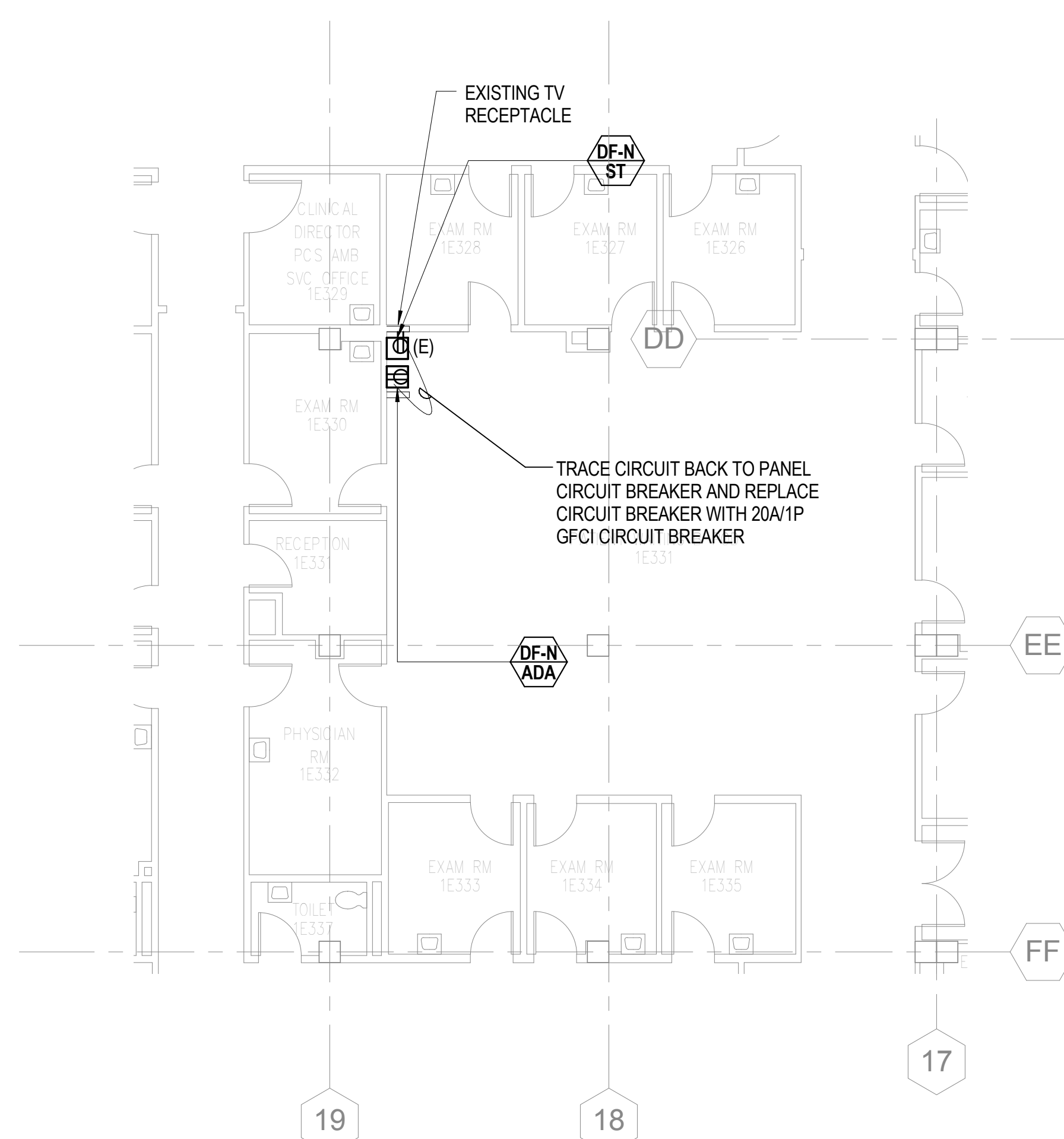
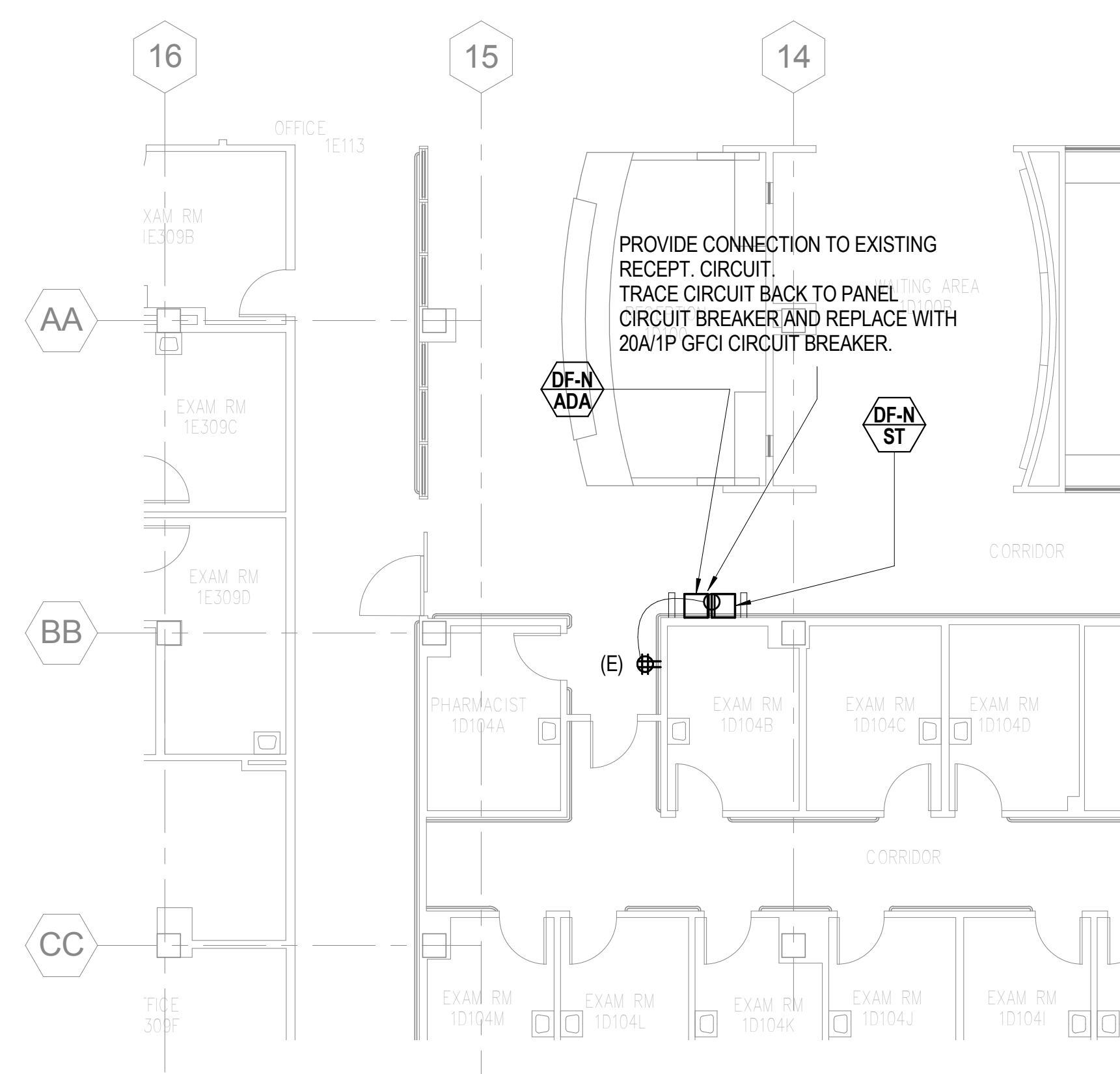
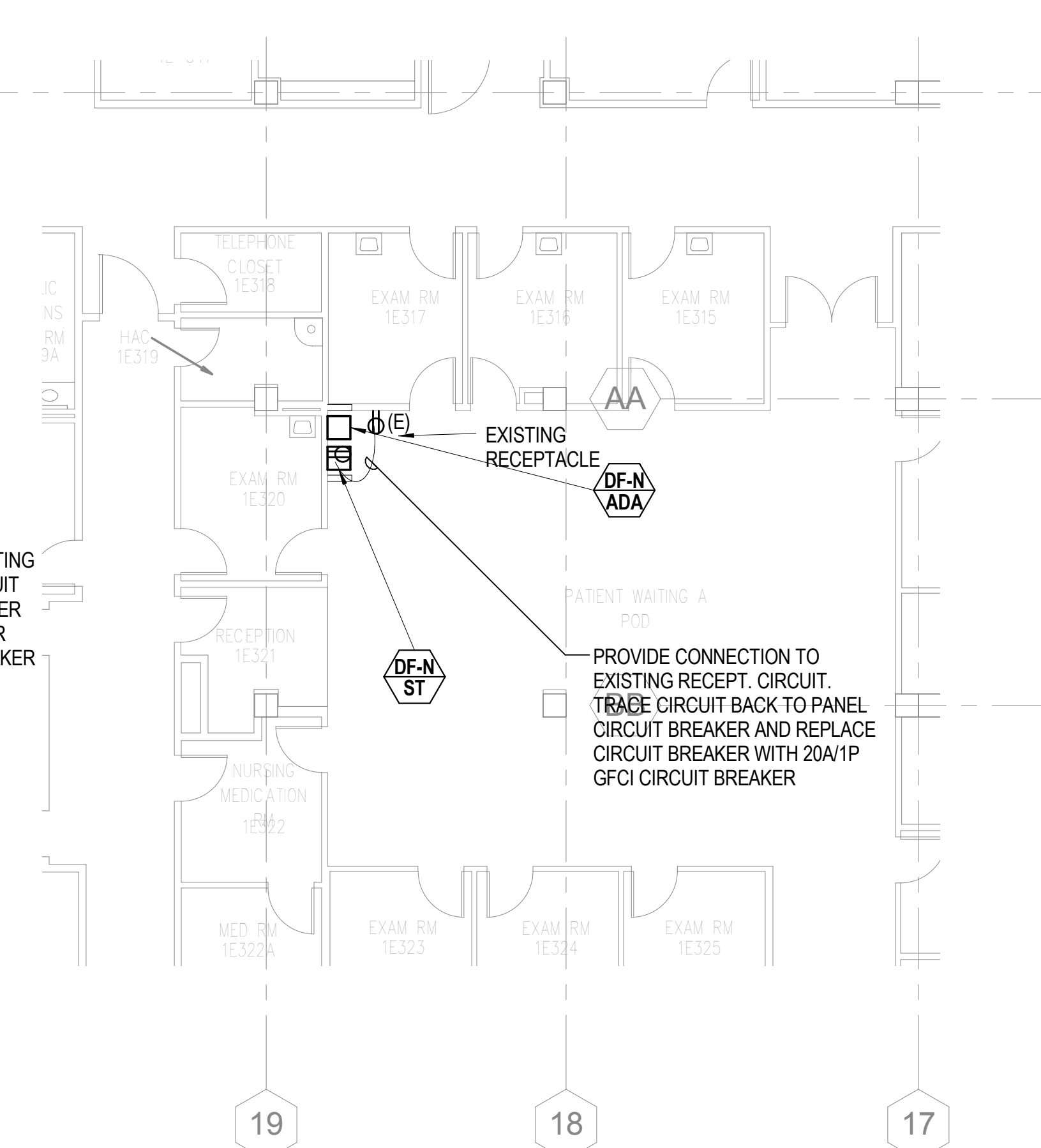
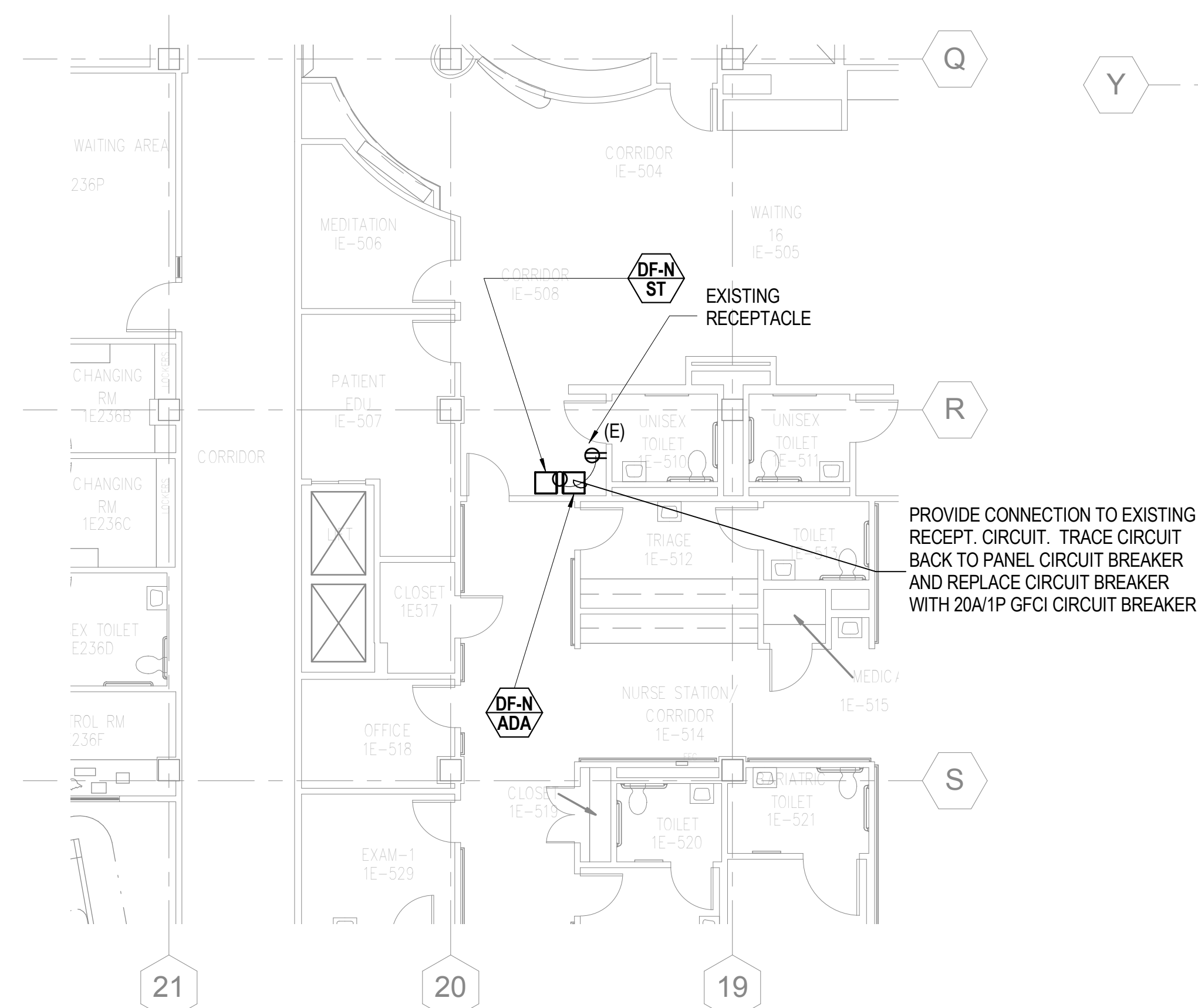
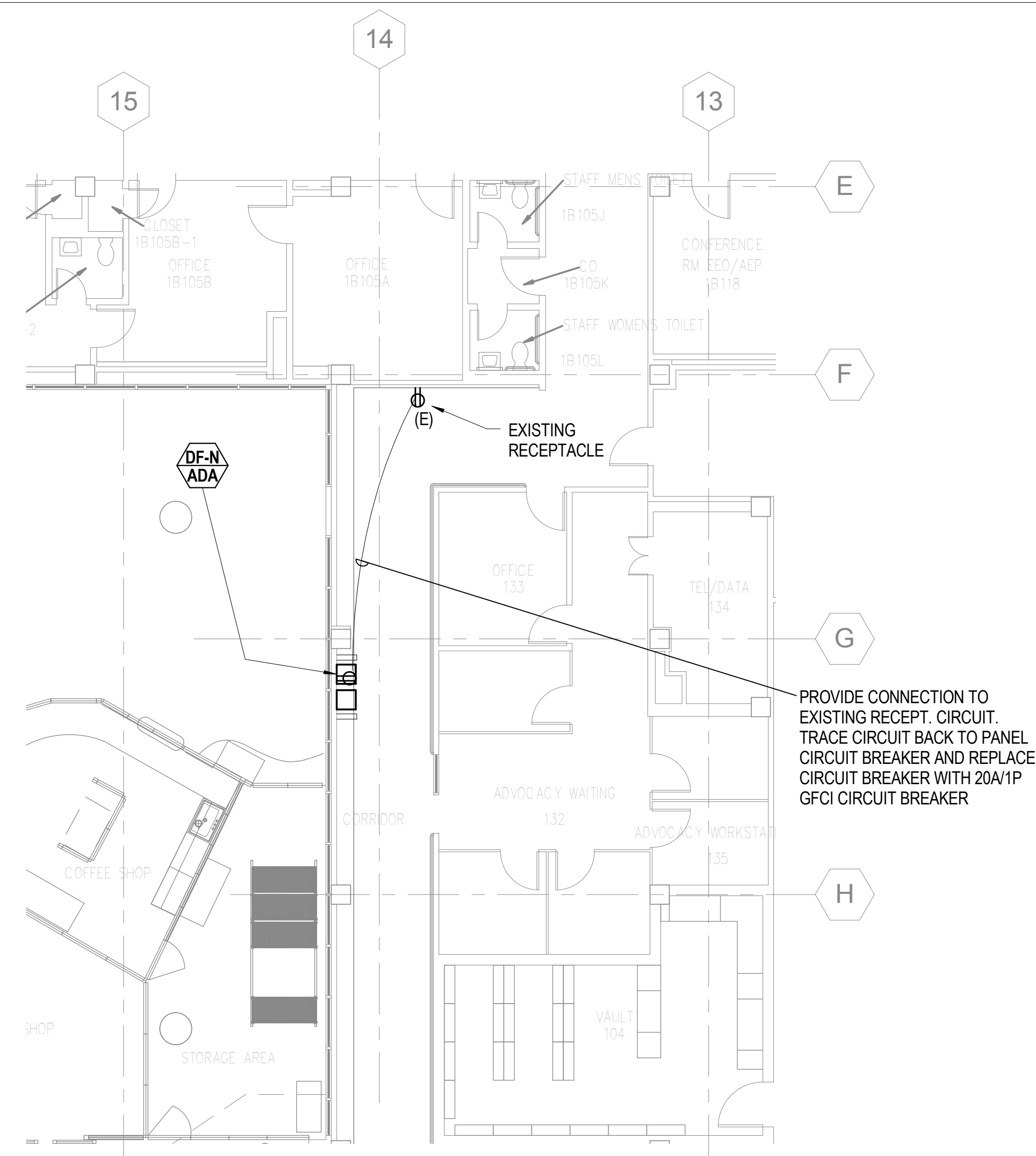
DATE: April 13, 2016

**100% CONSTRUCTION DOCUMENTS**

EP-200

© COPYRIGHT HAMMEL, GREEN AND ABRAHAMSON, INC.





GENERAL NOTES:

A. COORDINATE DRINKING FOUNTAIN RECEPTACLE LOCATION WITH PLUMBING CONTRACTOR.

B. PROVISION OF GFCI CIRCUIT BREAKER FOR DRINKING FOUNTAIN IS PER NEC 2014 - ARTICLES 422.5 AND 422.52.

C. ALL DEVICES IN FINISHED AREAS ARE TO BE RECESSED FLUSH WITHIN WALLS EXCEPT WHERE REQUIRED TO BE SURFACE MOUNTED ON PRECAST CONCRETE WALLS. IN UNFINISHED AREAS (E.G. PLUMBING CHASES, JANITORS CLOSETS, ELECTRICAL ROOMS, MECHANICAL ROOMS, AND ETC.) DEVICES AND CONDUIT MAY BE SURFACE MOUNTED

D. CONDUIT AND WIRING MAY NOT BE SHOWN GRAPHICALLY ON THE PLANS. HOWEVER IT SHALL BE PROVIDED COMPLETE AS REQUIRED BASED ON IDENTIFICATION OF CIRCUIT NUMBERS, RELAY NUMBERS, SPECIFIED MINIMUM CONDUIT SIZE, SPECIFIED MINIMUM CONDUCTOR SIZES, AND/OR SPECIFIED MINIMUM GROUNDING.

# hG.

44 Canal Center Plaza, Suite 100  
Alexandria, Virginia 22314  
Telephone 703.836.7766

**ENVIRONMENTAL ENGINEERING  
CONSULTANT**

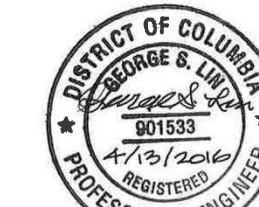
SPECIAL PATHOGENS  
LABORATORY  
1401 FORBES AVE, STE 209  
PITTSBURGH, PA 15219  
(412) 281-5335

DC VA MEDICAL  
CENTER  
50 IRVING ST.  
NW,  
WASHINGTON,  
DC 20422

## UPDATE DOMESTIC WATER SYSTEM FOR LEGIONELLA PREVENTION



I HEREBY CERTIFY THAT THIS PLAN, SPECIFICATIO  
OR REPORT WAS PREPARED BY ME OR UNDER MY  
DIRECT SUPERVISION AND THAT I AM A DULY  
LICENSED PROFESSIONAL ENGINEER UNDER THE  
LAWS OF THE DISTRICT OF COLUMBIA.



NAME: GEORGE S. LIN  
DATE: 4/13/2018  
REGISTRATION NUMBER: 001623

NO	DESCRIPTION	DATE
----	-------------	------

ISSUANCE HISTORY - THIS SHEET


HGA NO:	3819-001-00
---------	-------------

## FIRST LEVEL POWER PLAN - PARTIAL PLANS

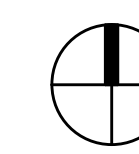
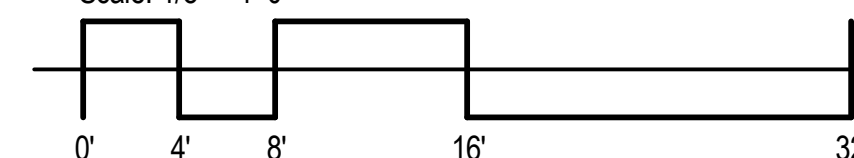
DATE: April 13, 2016

**100% CONSTRUCTION DOCUMENTS**

EP-210

<h1 style="text-align: center;">WASHINGTON DC VETERANS AFFAIRS MEDICAL CENTER</h1> <div style="display: flex; justify-content: center; align-items: center; gap: 20px;">  <div style="border: 1px solid black; padding: 5px; text-align: center;"> Department of Veterans Affairs </div> </div>	
<p>Approved: Medical Center Director</p>  <p>Approved: Medical Center Associate Director</p>  <p>Approved: Medical Center Chief of Facility Management Service</p>  <p>Approved: Medical Center Chief of Safety Service</p>  <p>Approved: Medical Center Chief of Infection Control</p>	

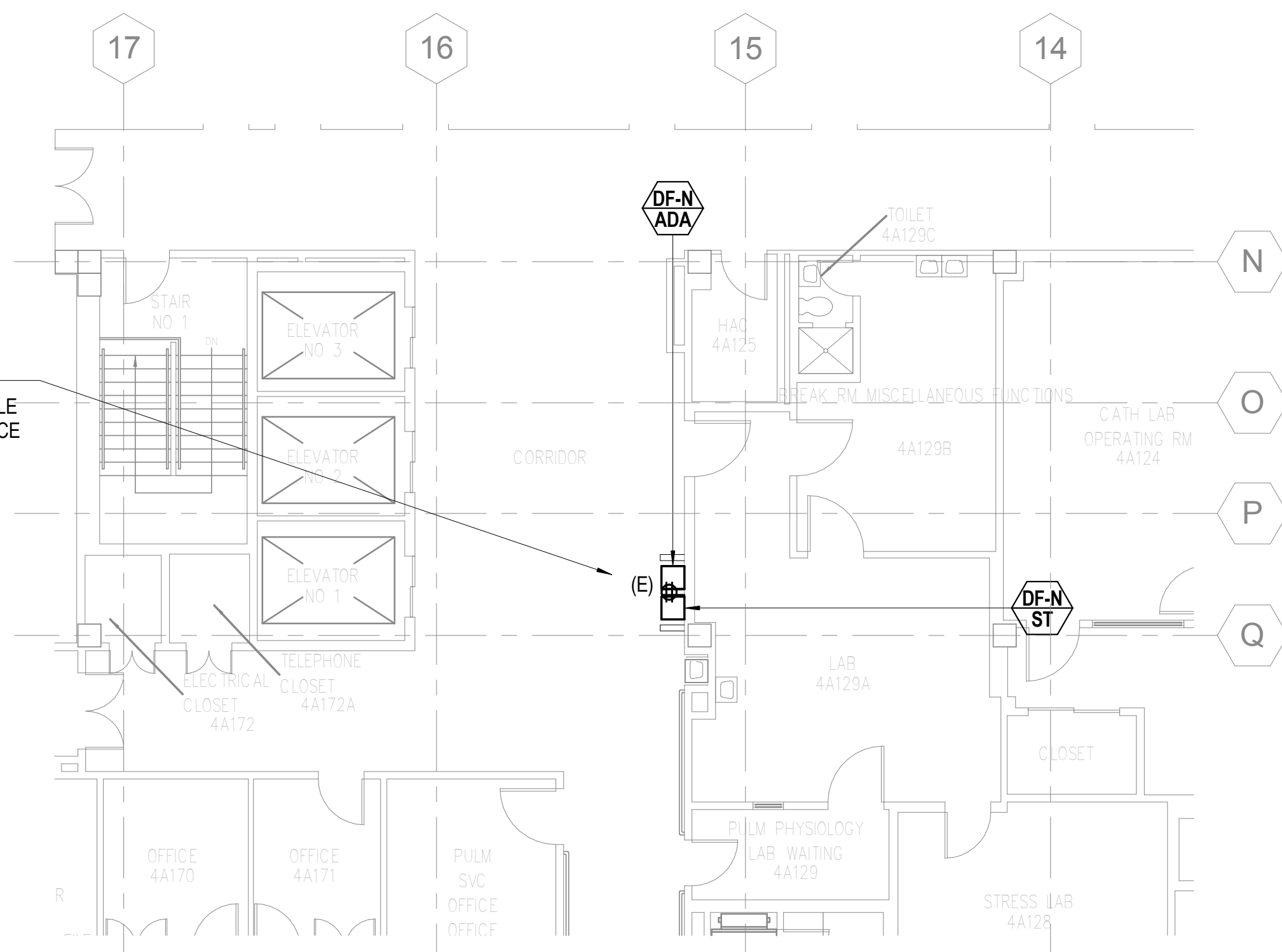
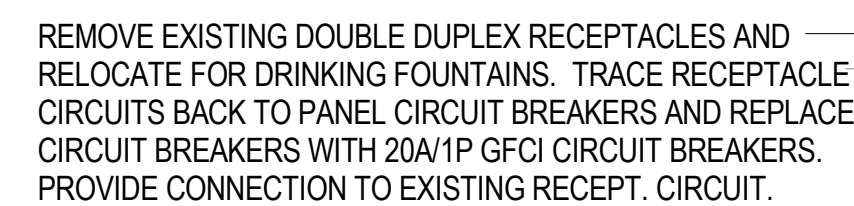
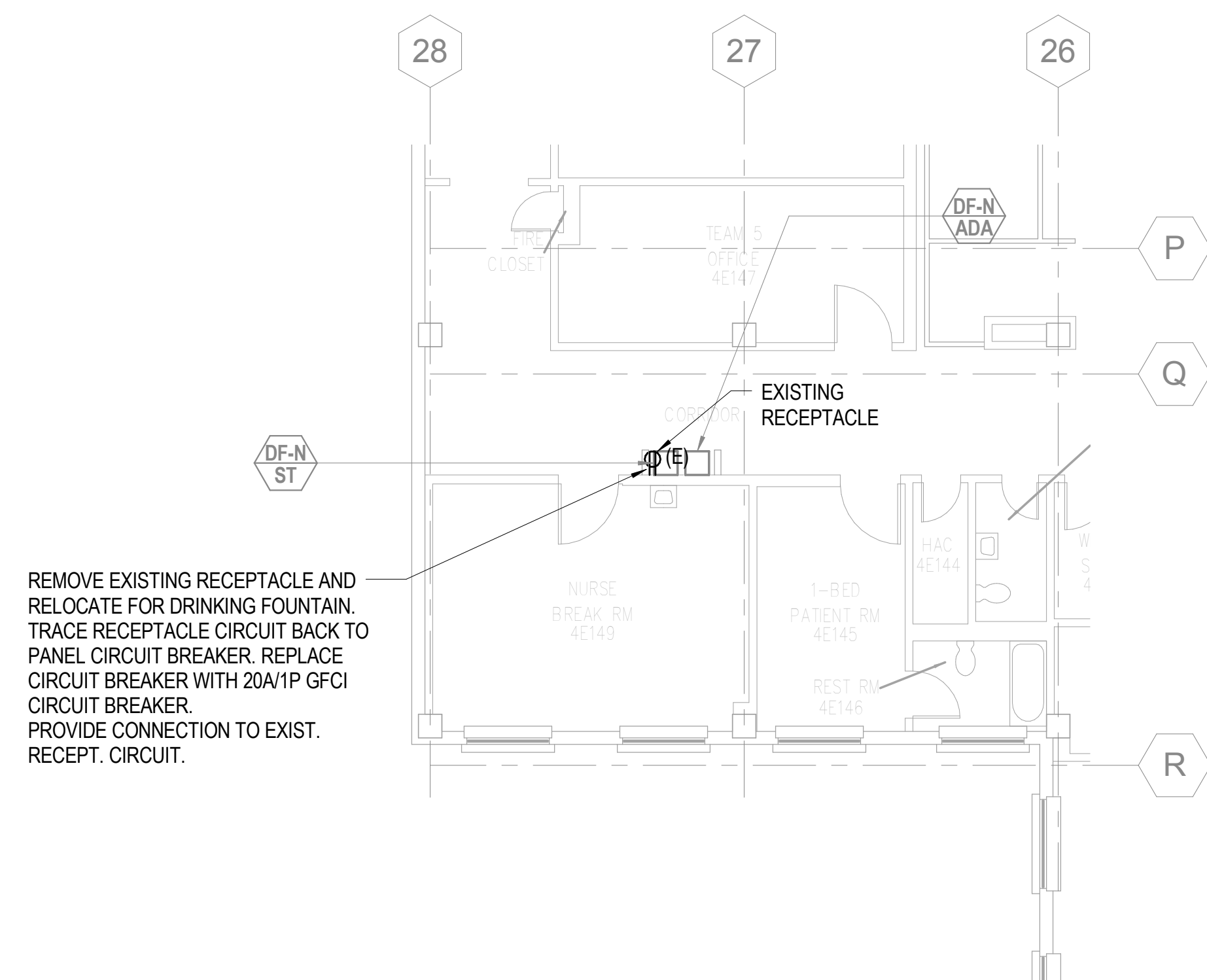
Scale: 1/8" = 1'-0"











GENERAL NOTES:

A. COORDINATE DRINKING FOUNTAIN RECEPTACLE LOCATION WITH PLUMBING CONTRACTOR.

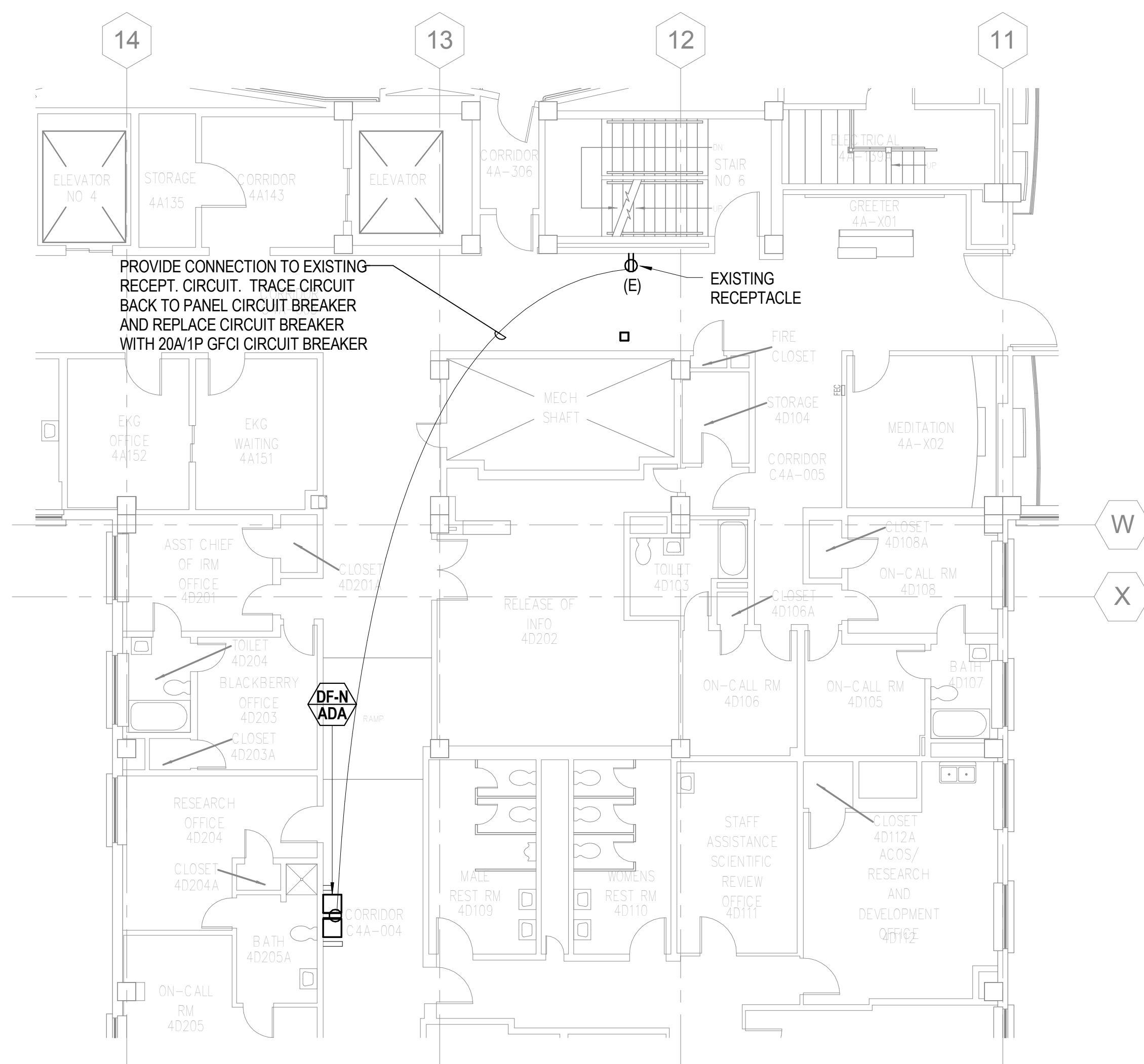
B. PROVISION OF GFCI CIRCUIT BREAKER FOR DRINKING FOUNTAIN IS PER NEC 2014 - ARTICLES 422.5 AND 422.52.

C. ALL DEVICES IN FINISHED AREAS ARE TO BE RECESSED FLUSH WITHIN WALLS EXCEPT WHERE REQUIRED TO BE SURFACE MOUNTED ON PRECAST CONCRETE WALLS. IN UNFINISHED AREAS (E.G. PLUMBING CHASES, JANITORS CLOSETS, ELECTRICAL ROOMS, MECHANICAL ROOMS, AND ETC.) DEVICES AND CONDUIT MAY BE SURFACE MOUNTED

D. CONDUIT AND WIRING MAY NOT BE SHOWN GRAPHICALLY ON THE PLANS. HOWEVER IT SHALL BE PROVIDED COMPLETE AS REQUIRED BASED ON IDENTIFICATION OF CIRCUIT NUMBERS, RELAY NUMBERS, SPECIFIED MINIMUM CONDUIT SIZE, SPECIFIED MINIMUM CONDUCTOR SIZES, AND/OR SPECIFIED MINIMUM GROUNDING.

1 PARTIAL POWER PLAN - FOURTH LEVEL - 1  
1/8" = 1'-0"

2 PARTIAL POWER PLAN - FOURTH LEVEL - 2  
1/8" = 1'-0"



3 PARTIAL POWER PLAN - FOURTH LEVEL - 3  
1/8" = 1'-0"

**hGA.**  
44 Canal Center Plaza, Suite 100  
Alexandria, Virginia 22314  
Telephone 703.836.7766

**ENVIRONMENTAL ENGINEERING  
CONSULTANT**

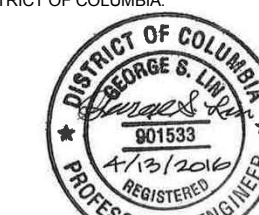
SPECIAL PATHOGENS  
LABORATORY  
1401 FORBES AVE, STE 209  
PITTSBURGH, PA 15219  
(412) 281-5335

DC VA MEDICAL  
CENTER  
50 IRVING ST.  
NW,  
WASHINGTON,  
DC 20422

UPDATE DOMESTIC  
WATER SYSTEM FOR  
LEGIONELLA  
PREVENTION



I HEREBY CERTIFY THAT THIS PLAN, SPECIFICATION OR REPORT WAS PREPARED BY ME OR UNDER MY DIRECT SUPERVISION AND THAT I AM A DULY LICENSED PROFESSIONAL ENGINEER UNDER THE LAWS OF THE DISTRICT OF COLUMBIA.



NAME: GEORGE S. LIN  
DATE: 4/13/2018  
REGISTRATION NUMBER: 901533

[illegible]

HGA NO:	3819-001-00
---------	-------------

**FOURTH LEVEL  
POWER PLAN -  
PARTIAL PLANS**

DATE: April 13, 2016

**100% CONSTRUCTION  
DOCUMENTS**

EP-240

© COPYRIGHT HAMMEL, GREEN AND ABRAHAMSON, INC.



D. CONDUIT AND WIRING MAY NOT BE SHOWN GRAPHICALLY ON THE PLANS. HOWEVER IT SHALL BE PROVIDED COMPLETE AS REQUIRED BASED ON IDENTIFICATION OF CIRCUIT NUMBERS, RELAY NUMBERS, SWITCHING IDENTIFICATION, MOTOR EQUIPMENT SCHEDULE, PANEL BOUNDARIES, SPECIFIED MINIMUM CONDUIT SIZE, SPECIFIED MINIMUM CONDUCTOR SIZES, AND/OR SPECIFIED MINIMUM GROUNDING.


4. PROVIDE 120V, 20A CIRCUIT CONNECTION TO WATER ANALYZER OR WATER METER. REFER TO PLUMBING PLAN FOR EXACT LOCATION. CONNECT TO NEAREST 120V, 20A CIRCUIT

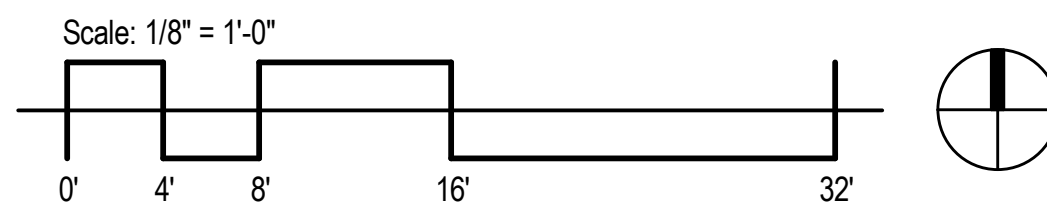
[illegible]

PARTIAL POWER  
PLAN - MER-1

**100% CONSTRUCTION  
DOCUMENTS**

EP-250

<h1 style="text-align: center;">WASHINGTON DC VETERANS AFFAIRS MEDICAL CENTER</h1> <div style="display: flex; justify-content: center; align-items: center;">  <div style="border: 1px solid black; padding: 5px;"> Department of Veterans Affairs </div> </div>	
Approved: Medical Center Director	Date
Approved: Medical Center Associate Director	Date
Approved: Medical Center Chief of Facility Management Service	Date
Approved: Medical Center Chief of Safety Service	Date
Approved: Medical Center Chief of Infection Control	Date





3. PROVIDE 120V, 20A CIRCUIT CONNECTION TO WATER ANALYZER OR WATER METER. REFER TO PLUMBING PLAN FOR EXACT LOCATION. CONNECT TO NEAREST 120V, 20A CIRCUIT.

EP-260

Scale:  $1/4" = 1'-0"$

The elevation drawing shows a building facade with a horizontal line representing the ground level. The facade has a series of steps or changes in height. The horizontal axis is marked with vertical lines and labels: 0', 2', 4', 8', and 16'. The vertical axis is marked with a horizontal line and a vertical line. To the right of the elevation drawing is a circular window with a vertical line through its center, indicating a vertical axis of symmetry.