

HITACHI ECHELON OVAL

LEGEND

- RF SHIELD REQUIRED. ARCHITECT TO VERIFY WALL CONSTRUCTION WITH RF VENDOR. IT MUST PROVIDE 80dB ATTENUATION OR BETTER FROM 1-70MHz. (TYPICAL 5" RF WALL THICKNESS REFLECTED.)
- RF VIEW WINDOW. TYPICALLY 4'W X 3'H. (TYP. 36" AFF)
- REMOVABLE EQUIPMENT ACCESS PANEL. FOR DELIVERY OF THE SYSTEM. MINIMUM 8'-0"W X 9'-0"H.
- JUNCTION BOX FOR POWER TO RFP CABINET.
- 480V, 20 AMP, 3PH, 4 WIRE HUBBELL 1.6-20 RECEPTACLE (OR EQUAL) FOR RAMP-UP TOOL USAGE.
- 115V, 15 AMP CONVENIENCE OUTLETS. MINIMUM OF TWO (2) PER ROOM REQUIRED FOR SERVICE AND MAINTENANCE.
- PHONE LINES - ONE (1) REQUIRED IN EQUIPMENT ROOM AND ONE (1) REQUIRED IN CONTROL ROOM.
- DATA PORT FOR BROADBAND NETWORK CONNECTION TO STANDARD 10/100 BASE T LINE. MAY BE THROUGH CUSTOMER'S IN-HOUSE NETWORK.
- 6" X 30" ON-WALL WIREWAY WITH REMOVABLE COVER AND FOUR (4) DIVIDERS. METAL ONLY. MUST BE NON-FERROUS IN THE SCAN ROOM.
- 6" X 30" ON-FLOOR WIREWAY WITH REMOVABLE COVER AND FOUR (4) DIVIDERS. NON-FERROUS METAL ONLY.
- MAGNET ISOCENTER

EQUIPMENT BY HMSA

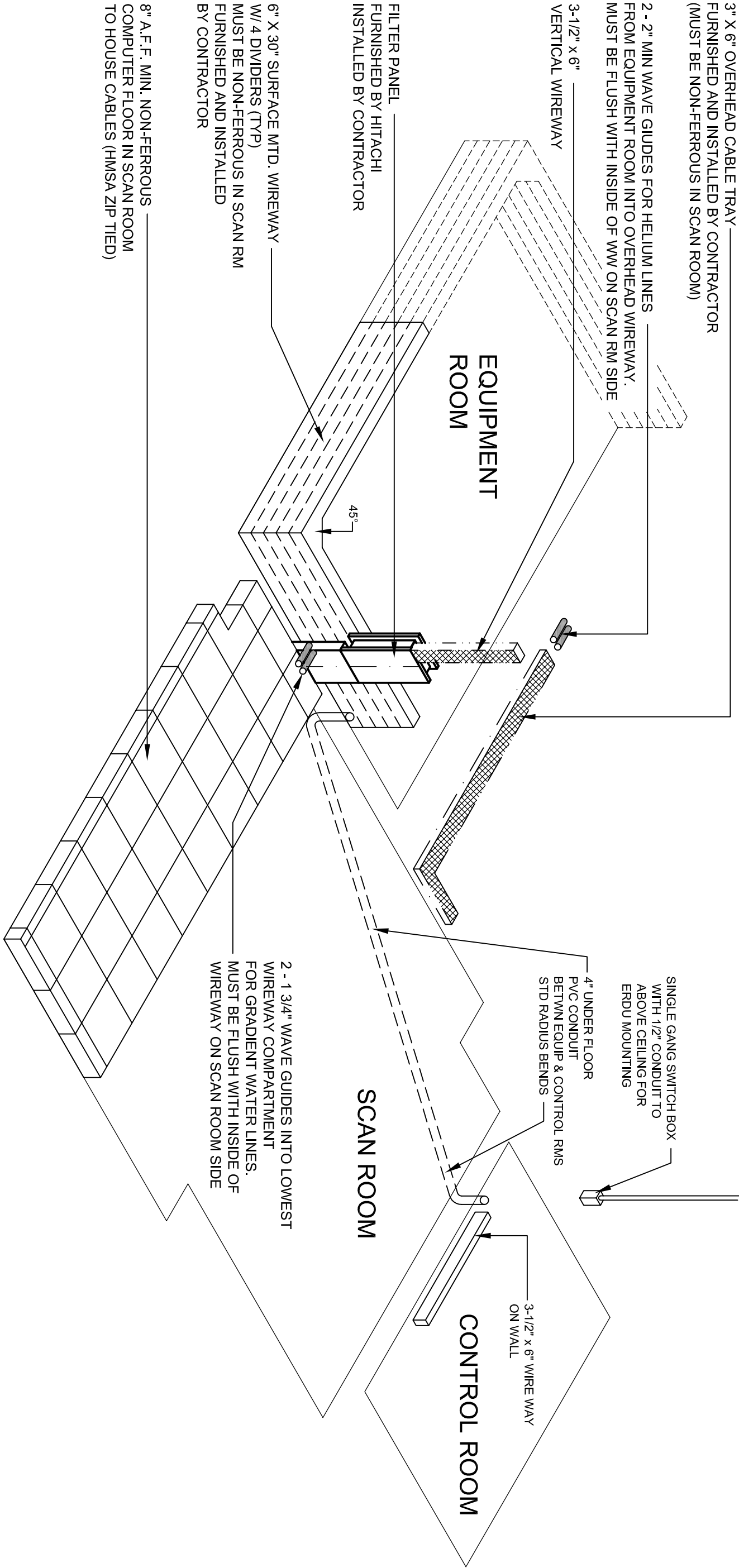
- Ⓐ ECHELON OVAL GANTRY
- Ⓑ PATIENT TABLE
- Ⓒ OPERATOR'S WORKSTATION
- Ⓓ RFP CABINET
- Ⓔ GPRA CABINET
- Ⓕ EMERGENCY RUN-DOWN BUTTON
- Ⓖ FILTER PANEL
- Ⓘ COIL STORAGE CABINET
- Ⓚ HELIUM COMPRESSOR
- Ⓜ SENSE UNIT
- Ⓝ HEAT EXCHANGER
- Ⓟ R1800 OUTDOOR CHILLER
- Ⓢ REMOTE FAN UNIT

BY OTHERS

- Ⓐ 6" X 30" NON-FERROUS ON-WALL WIREWAY
- Ⓑ 6" X 30" NON-FERROUS ON-FLOOR WIREWAY
- Ⓓ A.C. POWER PANEL (SIZED PER CODE)
- Ⓔ OXYGEN PROBE
- Ⓕ OXYGEN MONITOR
- Ⓖ LASER IMAGER
- Ⓘ WAVE GUIDES
- Ⓚ DELIVERY ACCESS PANEL
- Ⓜ FLOOR DRAIN
- Ⓝ CASEWORK
- Ⓟ HOSE BIBB
- Ⓢ HELIUM TANK RESTRAINT
- Ⓣ 3" X 6" OVERHEAD CABLE TRAY
- Ⓤ 3 1/2" X 6" WALL MOUNTED WIREWAY

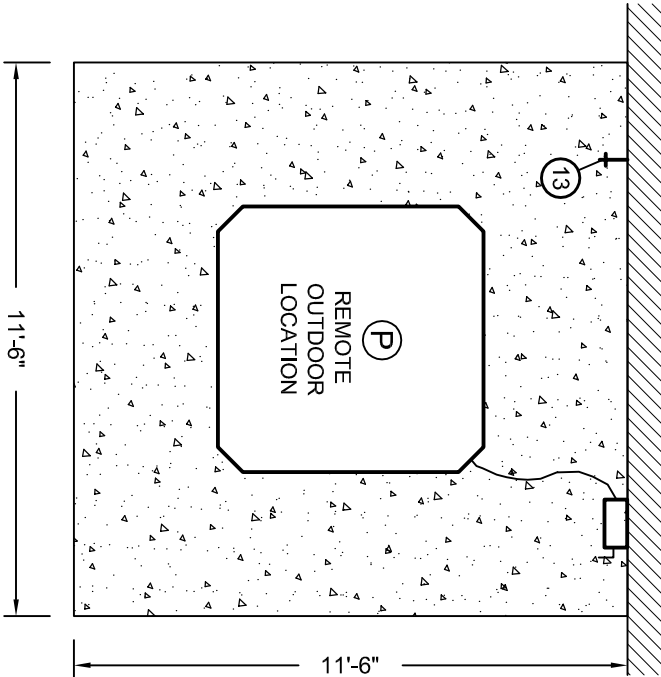
NOTES

- 480V, 20A, 3PH, 4 WIRE, NEMA 1.6-20 RECEPTACLE FOR USE WITH RAMP-UP TOOL TO INITIALIZE MAGNETIC FIELD. ECHELON OVAL SYSTEM DRAWS ONLY MINIMAL POWER DURING INITIALIZATION OF FIELD. RAMP-UP TOOL LOAD SHOULD NOT BE INCLUDED WHEN CALCULATING TOTAL LOAD ON PANEL FROM WHICH THE ECHELON XLXLS MRI SYSTEM DRAWS ITS POWER.
- CUSTOMER'S ARCHITECT/CONTRACTOR IS RESPONSIBLE FOR VERIFYING ALL POWER AND HVAC SPECIFICATIONS FOR EQUIPMENT NOT SUPPLIED BY HMSA.
- THIS DRAWING IS NOT FOR CONSTRUCTION PURPOSES. CUSTOMER IS RESPONSIBLE FOR HIRING QUALIFIED DESIGN PROFESSIONALS TO PREPARE CONSTRUCTION DOCUMENTS. CONSTRUCTION SHALL BE PERFORMED IN ACCORDANCE WITH THIS SITE SPECIFIC DRAWING. THE SPECIFICATIONS IN THE HMSA STANDARD DETAILS FOR THIS SYSTEM AND ALL APPLICABLE CODES AND REGULATIONS.
- HMSA RESERVES THE RIGHT TO WITHHOLD THE APPROVAL OF A SITE PENDING AN ON-SITE REVIEW AND APPROPRIATE QUALIFICATION TESTING BY HMSA PERSONNEL.
- CONSTRUCTION DRAWINGS ARE TO BE SUBMITTED TO THE HMSA SITE PLANNING DEPARTMENT FOR REVIEW PRIOR TO CONSTRUCTION.
- CONTACT THE HMSA SITE PLANNING DEPARTMENT AT 800-900-3106 IMMEDIATELY REGARDING ANY DEVIATION BETWEEN THIS DRAWING, HMSA ECHELON OVAL STANDARD DETAILS AND/OR CONSTRUCTION DOCUMENTS.
- THIS DRAWING IS THE PROPERTY OF HITACHI MEDICAL SYSTEMS AMERICA, INC. (HMSA) AND IS NOT FOR CONSTRUCTION PURPOSES. THIS DRAWING, IN CONJUNCTION WITH THE STANDARD DETAILS FOR THE ECHELON XLXLS MRI SYSTEM, IS FOR THE USE OF THE CUSTOMER'S DESIGN PROFESSIONALS TO PREPARE APPROPRIATE CONSTRUCTION DOCUMENTS IN ACCORDANCE WITH ALL APPLICABLE CODES AND REGULATIONS. HMSA RESERVES THE RIGHT TO REFUSE TO INSTALL ANY OR ALL EQUIPMENT WHEN THE ROOM PREPARATION DOES NOT MEET SPECIFICATIONS. THE CURRENT STANDARD DETAILS MAY BE OBTAINED BY CONTACTING HMSA'S SITE PLANNING DEPARTMENT AT 800-900-3106.



WIREWAY ISOMETRIC

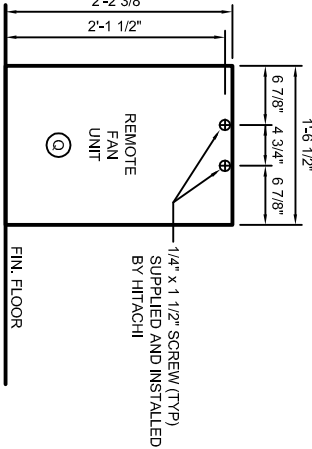
PRELIMINARY CONTRACTOR TO VERIFY DIMENSIONS & CONDITIONS AT THE BUILDING NOT FOR CONSTRUCTION



CHILLER PLAN

NOT TO SCALE

CONTRACTOR TO PROVIDE BLOCKING IN WALL AS REQUIRED TO ACCOMMODATE SCREWS FOR SECURING REMOTE FAN UNIT TO WALL.



REMOTE FAN UNIT ANCHORAGE

NOT TO SCALE

REVISIONS:

DATE	REV