

Drawing File: \\Project\1313 Renovate Radiology & SPS VA Shreveport\3 1313 Drawings\Renovate Radiology & SPS - VA Shreveport\Sheets\G001 DRAWING INDEX, MOUNTING HEIGHTS AND ACCESSIBILITY.dwg  
Plotted by: hamed  
Plotted Date: May 20, 2015 1:45:39pm

A  
three inches = one foot

B  
one and one-half inches = one foot

C  
one inch = one foot

D  
three-quarters inch = one foot

E  
one-half inch = one foot

F  
three-eighths inch = one foot

G  
one-quarter inch = one foot

G  
one-eighth inch = one foot

## INFECTIOUS CONTROL NOTES- DURING PROJECT CONSTRUCTION

- ISOLATE HVAC SYSTEM IN AREA WHERE WORK IS TO BE DONE TO PREVENT CONTAMINATION OF DUCT SYSTEM.
- COMPLETE ALL CRITICAL BARRIERS i.e. SHEETROCK, PLYWOOD, PLASTIC, TO SEAL AREA FROM NON-WORK AREA OR IMPLEMENT CONTROL CUBE METHOD (CART WITH PLASTIC COVERING AND SEALED CONNECTION TO WORK SITE WITH HEPA VACUUM PRIOR FOR VACUUMING PRIOR TO EXIT) BEFORE CONSTRUCTION BEGINS.
- MAINTAIN NEGATIVE AIR PRESSURE WITHIN WORK SPACE, BY DISCHARGING AIR TO EXTERIOR. CONTRACTOR MAY USE TEMPORARY FAN THAT HAS A HEPA FILTER WITH DISCHARGE TO EXTERIOR SPACE OUTSIDE MECHANICAL ROOM. SEE MECHANICAL PLANS.
- SEAL ALL HOLES, PIPES, CONDUITS, PENETRATIONS OR PUNCTURES WITHIN ENVELOPE OF WORK AREA IN APPROPRIATE MANNER.
- CONSTRUCT "ANTE-ROOM" AND REQUIRE ALL PERSONNEL TO PASS THROUGH THIS ROOM SO THEY CAN BE VACUUMED USING A HEPA VACUUM CLEANER BEFORE LEAVING WORK SITE OR THEY CAN WEAR CLOTH OR PAPER COVERALLS THAT ARE REMOVED EACH TIME THEY LEAVE THE WORK SITE. KEEP AREA ADJACENT TO THE ANTE ROOM MOPPED CLEAN AS REQUIRED BY PROJECT TRAFFIC.
- DURING DEMOLITION OR ANY DUST PRODUCING WORK OR WORK IN THE CEILING, DISPOSABLE SHOES OR SHOE COVERS MUST BE WORN AND REMOVED IN THE "ANTE-ROOM" WHEN THE WORKER EXITS THE WORK SITE.
- DO NOT REMOVE CONSTRUCTION BARRIERS FROM WORK AREA UNTIL COMPLETED PROJECT IS SIGNED OFF BY ARCHITECT AND VA'S INFECTION CONTROL DEPARTMENT, AND THOROUGHLY CLEANED BY VA'S ENVIRONMENTAL SERVICES DEPARTMENT.
- PROVIDE DUST "STICKY" MAT ENTRANCE/EXIT OF CONSTRUCTION AREA AND REPLACE OR CLEAN WHEN NO LONGER EFFECTIVE.
- KEEP AREA BROOM CLEAN AND REMOVE DEBRIS DAILY IN MANNER/PATH AS NOTED

## INFECTIOUS CONTROL NOTES- UPON PROJECT COMPLETION

- REMOVE BARRIER MATERIAL CAREFULLY TO MINIMIZE SPREADING OF DIRT AND DEBRIS ASSOCIATED WITH CONSTRUCTION.
- CONTAIN CONSTRUCTION WASTE BEFORE TRANSPORT IN TIGHTLY COVERED CONTAINERS.
- COVER TRANSPORT RECEPTACLES OR CARTS. TAPE COVERING UNLESS SOLID LID.
- VACUUM WORK AREA WITH HEPA FILTERED VACUUM.
- WET MOP WORK AREA WITH DISINFECTANT.
- REMOVE ISOLATION OF HVAC SYSTEMS IN AREAS WHERE WORK IS BEING PERFORMED.
- WIPE CASEWORK AND HORIZONTAL SURFACES AT COMPLETION OF PROJECT.

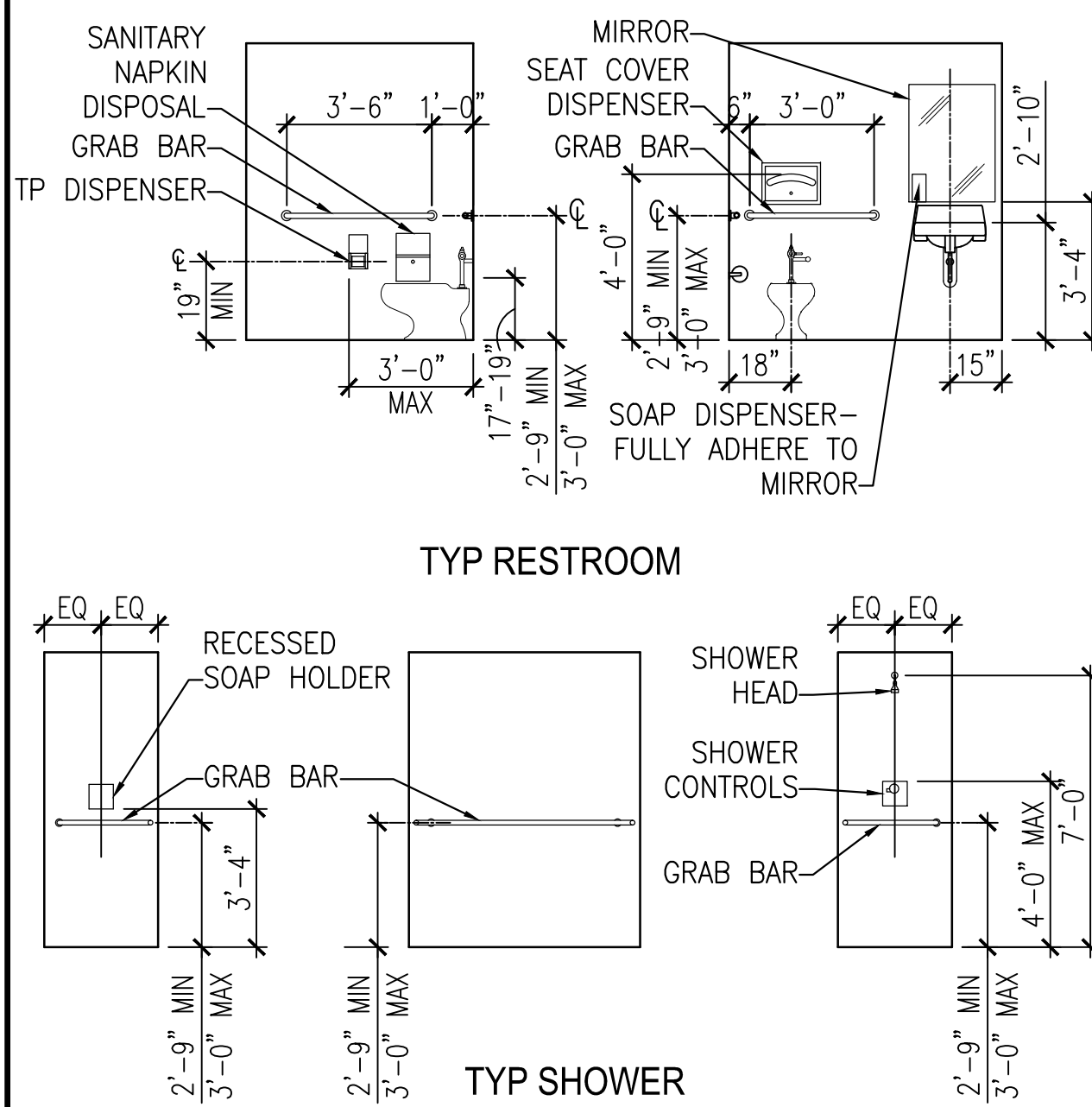
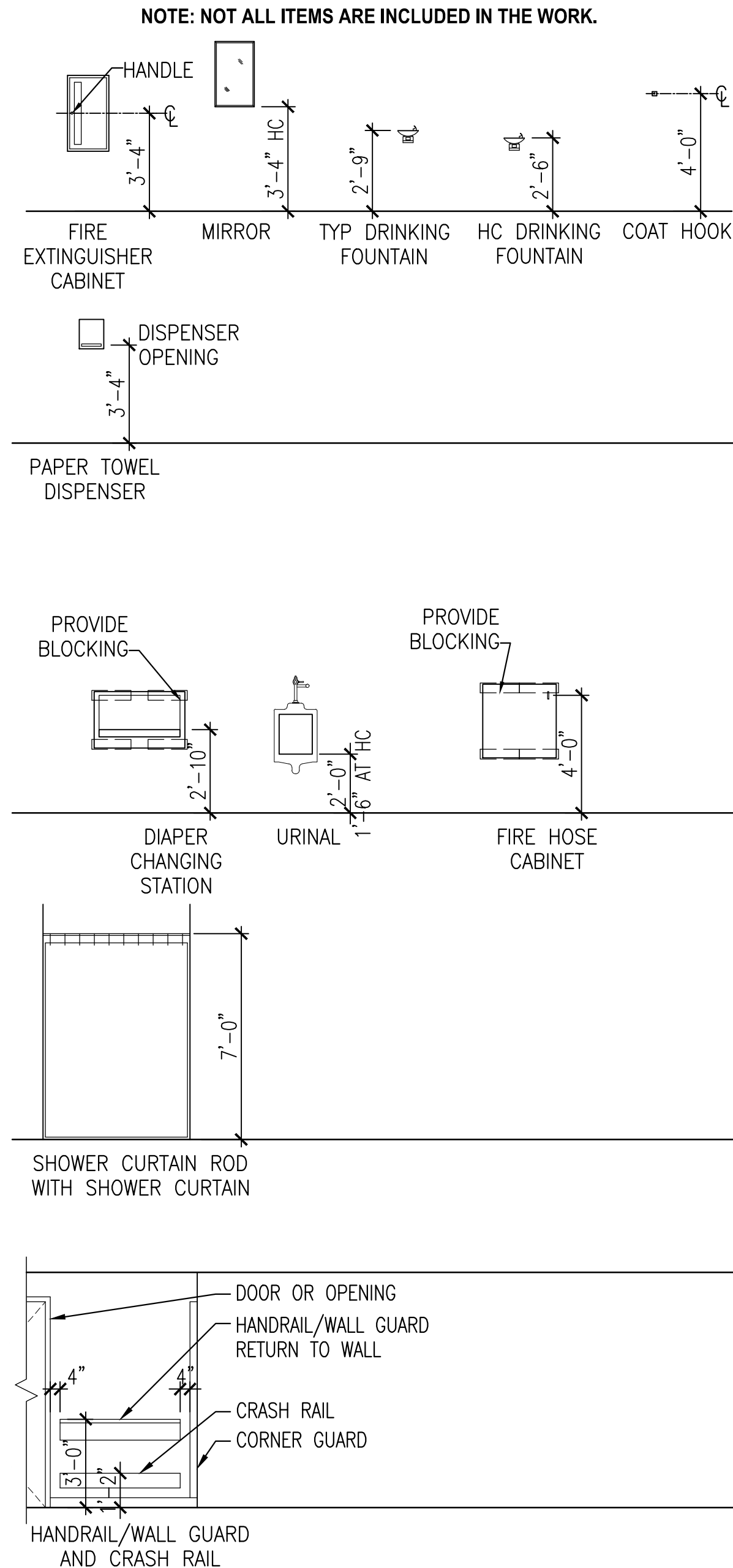
## INFECTIOUS CONTROL SUBMITTALS

- CONTRACTOR IS TO REVIEW INFECTIOUS CONTROL PROCEDURES INCLUDING LOCATION AND DETAILS OF BARRIERS, MEANS OF CREATING NEGATIVE PRESSURE, ETC., PRIOR TO START OF PROJECT FOR REVIEW BY OWNER HEALTH AND SAFETY AND FACILITIES PERSONNEL PREPONSIBLE FOR MANAGING THE PROJECT.
- CONTRACTOR SHALL SUBMIT PRODUCT DATA FOR REVIEW AS REQUESTED.

## INFECTIOUS CONTROL PRODUCTS & MATERIALS

- CONSTRUCTION BARRIERS SHALL CONSIST OF METAL STUDS WITH 6 MILL. THICK FIRE RETARDANT PLASTIC SHEETS OR GYPSUM BOARD, UNLESS OTHERWISE NOTED.
- SOLID CORE WOODEN DOORS IN METAL FRAME - PAINTED.
- EXHAUST HOSES ARE TO BE HEAVY DUTY, STEEL REINFORCED HOSE, WPC SUCH AS MANUFACTURED BY FEDERAL HOSE MFG. PAINSVILLE, OH OR EQUIVALENT.
- DISINFECTANT AS APPROVED BY VA HOSPITAL.

## MOUNTING HEIGHTS

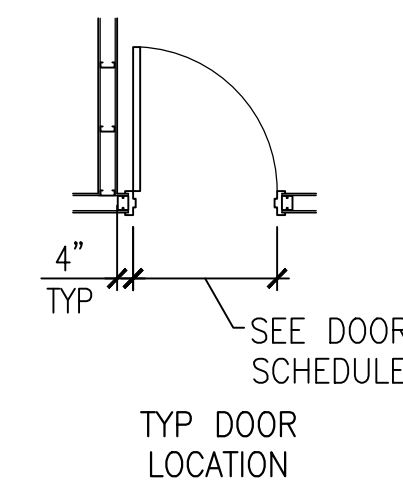


TYP RESTROOM

TYP SHOWER

## TYPICAL DETAILS

### DOOR LOCATIONS

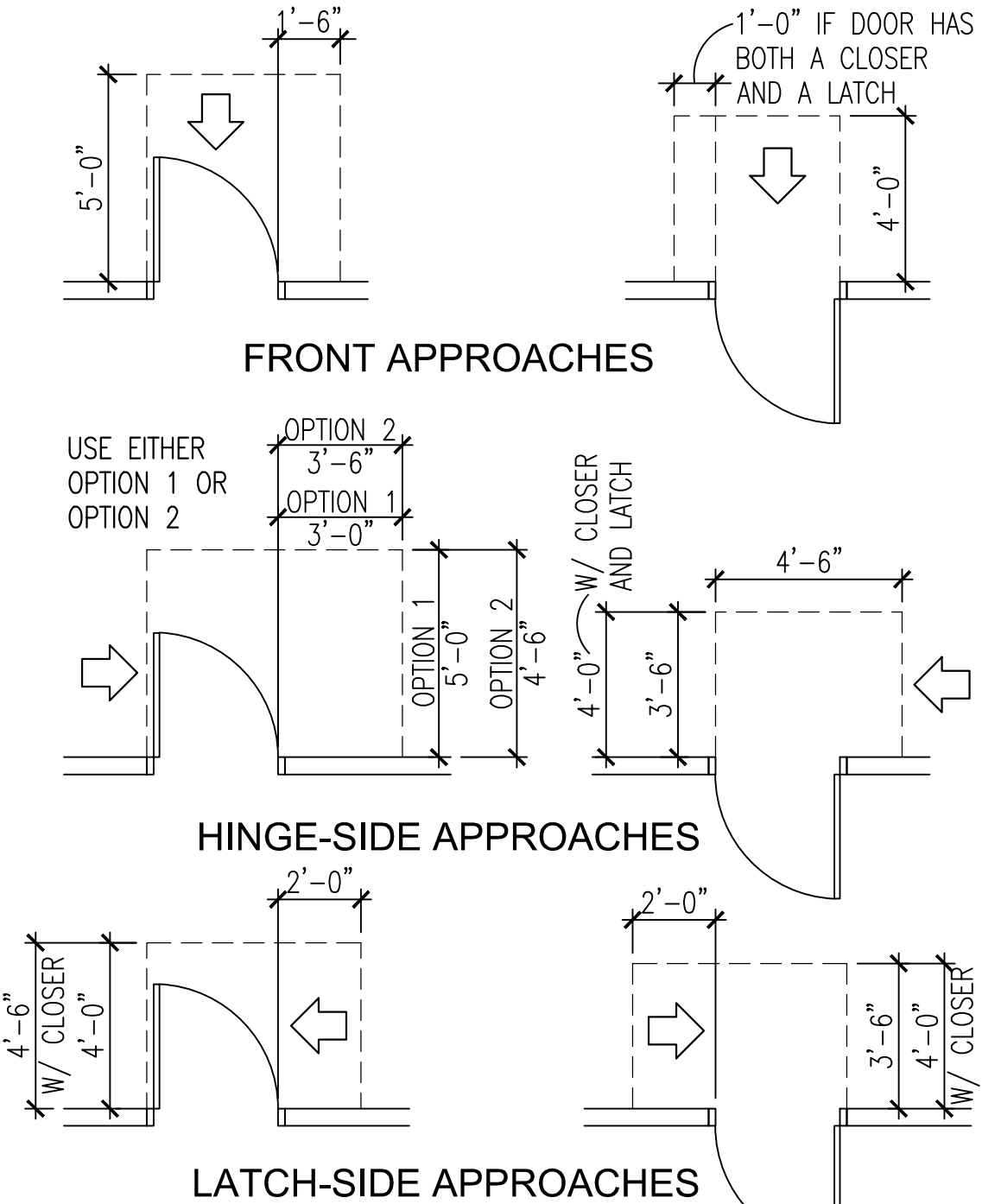


ALL WORK SHALL COMPLY WITH FEDERAL ADA, LOCAL, AND STATE ACCESSIBILITY CODES AND REQUIREMENTS.

TYP DOOR LOCATION

### ACCESSIBILITY REQUIREMENTS

ALL DOOR ASSEMBLIES SHALL BE CONSTRUCTED TO MEET THE INDICATED MINIMUM CLEARANCES AS APPLICABLE.



FRONT APPROACHES

HINGE-SIDE APPROACHES

LATCH-SIDE APPROACHES

## INDEX OF DRAWINGS

DWG NO.	DRAWING TITLE	DWG NO.	DRAWING TITLE
GENERAL		PLUMBING (CONTINUED)	
G000	COVER SHEET	PP102	MEDICAL GAS AND LABORATORY GAS DISTRIBUTION THIRD FLOOR PLAN
G001	DRAWING INDEX, MOUNTING HEIGHTS, NOTES AND ACCESSIBILITY	PP103	DOMESTIC WATER DISTRIBUTION FOURTH FLOOR NEW WORK PLAN
G002	STANDARD ABBREVIATIONS, DETAILS, LEGENDS AND NOTES	PP104	MEDICAL GAS DISTRIBUTION FOURTH FLOOR NEW WORK PLAN
G003	SITE, STAGING AND PHASING PLAN	PP201	LARGE-SCALE THIRD AND FOURTH FLOOR NEW WORK PLANS
G004	BID ALTERNATES A-D	PP301	DOMESTIC WATER SUPPLY DISTRIBUTION ISOMETRIC RISER DIAGRAM
G005	BID ALTERNATES E-G	PP302	LABORATORY GAS SUPPLY DISTRIBUTION ISOMETRIC DIAGRAM
G006	GENERATOR ENCLOSURE PLAN AND DETAILS	PP501	SCHEDULES
C102	PHASING PLAN 1 & 2 (FOR INFORMATION ONLY)	PL101	WASTE, DRAIN, VENT, MEDICAL GAS, AND DOMESTIC WATER PIPING FIRST FLOOR AND SECOND FLOOR NEW WORK PLAN
C103	PHASING PLAN 3 & 4 (FOR INFORMATION ONLY)	PL102	WASTE DRAIN AND VENT PIPING THIRD FLOOR NEW WORK PLAN
ARCHITECTURAL		PL103	WASTE DRAIN AND VENT PIPING FOURTH FLOOR NEW WORK PLAN
LS103	3RD FLOOR LIFE SAFETY PLAN	PL104	WASTE DRAIN AND VENT PIPING ROOF NEW WORK PLANS
LS104	4TH FLOOR LIFE SAFETY PLAN	PL201	WASTE, DRAINAGE, AND VENT ISOMETRIC RISER DIAGRAMS
AD102	2ND, 3RD AND 4TH FLOOR DEMOLITION PLANS	MECHANICAL	
AD105	ROOF DEMOLITION PLAN	M001	LEGEND AND GENERAL NOTES-MECHANICAL
AD112	1ST, 2ND, 3RD AND 4TH FLOOR DEMOLITION REFLECTED CEILING PLANS	MD101	BASEMENT PIPING DEMOLITION FLOOR PLAN-MECHANICAL
AD501	DEMOLITION DETAILS	MD102	SECOND FLOOR PIPING DEMOLITION FLOOR PLAN-MECHANICAL
AD502	DEMOLITION DETAILS	MD103	SECOND FLOOR SUPPLY DUCTWORK DEMOLITION FLOOR PLAN-MECHANICAL
A103	3RD FLOOR PLAN, CORRIDOR 1S90, CANTEN STORAGE 2S01	MD104	SECOND FLOOR RETURN AND EXHAUST DUCTWORK DEMOLITION FLOOR PLAN-MECHANICAL
A104	4TH FLOOR PLAN	MD401	FIRST FLOOR PIPING DEMOLITION FLOOR PLAN-MECHANICAL
A105	ROOF PLAN	MD402	ENLARGED SECOND FLOOR DUCTWORK AND PIPING DEMOLITION FLOOR PLAN-MECHANICAL
A113	3RD FLOOR REFLECTED CEILING PLAN	MD403	ENLARGED STAIR DUCTWORK AND PIPING DEMOLITION FLOOR PLANS-MECHANICAL
A114	4TH FLOOR & ELEVATOR MACHINE ROOM REFLECTED CEILING PLANS	M101	SECOND FLOOR SUPPLY DUCTWORK NEW WORK FLOOR PLAN-MECHANICAL
A123	3RD FLOOR EQUIPMENT PLAN	M102	SECOND FLOOR RETURN AND EXHAUST DUCTWORK NEW WORK FLOOR PLAN-MECHANICAL
A124	4TH FLOOR EQUIPMENT PLAN	M103	SECOND FLOOR PIPING NEW WORK FLOOR PLAN-MECHANICAL
A133	3RD FLOOR FURNITURE PLAN (FOR INFORMATION ONLY)	M104	THIRD FLOOR SUPPLY DUCTWORK NEW WORK PLAN-MECHANICAL
A134	4TH FLOOR FURNITURE PLAN (FOR INFORMATION ONLY)	M105	THIRD FLOOR PIPING NEW WORK PLAN-MECHANICAL
A201	EAST ELEVATION	M106	THIRD FLOOR RETURN AND EXHAUST DUCTWORK NEW WORK PLAN-MECHANICAL
A202	SOUTH AND NORTH ELEVATIONS	M107	FOURTH FLOOR SUPPLY DUCTWORK NEW WORK FOURTH FLOOR PLAN-MECHANICAL
A203	WEST ELEVATION	M108	FOURTH FLOOR RETURN AND EXHAUST DUCT NEW WORK FOURTH FLOOR PLAN-MECHANICAL
A301	WALL SECTIONS	M109	FOURTH FLOOR PIPING NEW WORK FOURTH FLOOR PLAN-MECHANICAL
A302	WALL SECTIONS	M110	DUCTWORK NEW WORK ROOF PLAN-MECHANICAL
A303	WALL SECTIONS AND DETAILS	M111	PIPING NEW WORK ROOF PLAN-MECHANICAL
A401	SPS PLAN ENLARGEMENT, TOILET 336	M112	PARTIAL SUB-BASEMENT PIPING NEW WORK FLOOR PLAN-MECHANICAL
A402	IMAGING PLAN ENLARGEMENT, TOILET PLAN ENLARGEMENTS	M401	FIRST FLOOR PIPING NEW WORK FLOOR PLAN-MECHANICAL
A403	STAIR 11 PLAN ENLARGEMENTS	M402	ENLARGED SECOND FLOOR DUCTWORK AND PIPING NEW WORK FLOOR PLAN-MECHANICAL
A404	STAIR 11 SECTION, STAIR DETAILS	M403	ENLARGED STAIR PIPING NEW WORK FLOOR PLANS-MECHANICAL
A405	STAIR 10 SECTION AND PLAN ENLARGEMENTS	M404	ENLARGED STAIR PIPING NEW WORK FLOOR PLANS-MECHANICAL
A406	INTERIOR ELEVATIONS-THIRD FLOOR	M405	ENLARGED STAIR DUCTWORK NEW WORK FLOOR PLANS-MECHANICAL
A407	INTERIOR ELEVATIONS-THIRD FLOOR	M406	FIRST FLOOR PIPING DEMOLITION FLOOR PLAN-MECHANICAL
A408	INTERIOR ELEVATIONS-FOURTH FLOOR	M501	DETAILS-MECHANICAL
A409	INTERIOR ELEVATIONS-FOURTH FLOOR	M502	DETAILS-MECHANICAL
A501	PARTITION TYPES, FRAMING DETAILS, INTERIOR DETAILS	M503	DETAILS AND SCHEMATICS-MECHANICAL
A502	WALL FRAMING DETAILS, GENERAL DETAILS	M504	DETAILS-MECHANICAL
A503	PLAN DETAILS	M505	DETAILS-MECHANICAL
A504	SECTION DETAILS	M506	CHILLED WATER SYSTEM PIPING SCHEMATIC-MECHANICAL
A505	ROOF DETAILS	M507	AIR HANDLING UNIT LAYOUT-MECHANICAL
A506	EXPANSION JOINT DETAILS	M508	AIR HANDLING UNIT LAYOUT-MECHANICAL
A507	MILLWORK DETAILS	M509	AIR HANDLING UNIT LAYOUT-MECHANICAL
A508	CEILING DETAILS, INTERIOR DETAILS	M601	SCHEDULES-MECHANICAL
A509	ELEVATOR DETAILS, CART WASH PIT DETAILS AND PASSTHRU WINDOW	M602	SCHEDULES-MECHANICAL
A510	SHIELDING DETAILS	M603	SCHEDULES-MECHANICAL
A600	DOOR SCHEDULE AND DETAILS	M701	SPS AIR FLOW AND PRESSURIZATION PLAN-MECHANICAL
A601	STOREFRONT AND CURTAINWALL ELEVATIONS AND DETAILS	M801	CONTROL SCHEDULES AND LEGEND MECHANICAL
A602	FINISH SCHEDULES	M802	CONTROL SCHEDULES AND LEGEND MECHANICAL
A603	3RD FLOOR FINISH PLAN	M803	CONTROL SCHEDULES AND LEGEND MECHANICAL
A604	4TH FLOOR FINISH PLAN	M804	CONTROL SCHEDULES AND LEGEND MECHANICAL
A800	SIGNAGE ELEVATIONS AND SCHEDULES	M805	SEQUENCE OF CONTROLS MECHANICAL
A803	3RD FLOOR SIGNAGE PLAN	M806	SEQUENCE OF CONTROLS MECHANICAL
A804	4TH FLOOR SIGNAGE PLAN	FIRE PROTECTION	
STRUCTURAL		FP001	LEGEND AND DETAILS
S001	ABBREVIATIONS & GENERAL NOTES	FP101	THIRD FLOOR PLAN FIRE PROTECTION
S002	TYPICAL DETAILS	FP102	FOURTH FLOOR PLAN
S003	TYPICAL DETAILS	ELECTRICAL	
S004	TYPICAL DETAILS	E001	LEGEND, SCHEDULES AND RISER DIAGRAM ELECTRICAL
S101	EXISTING 3RD FLOOR FRAMING PLAN	EL101	NEW WORK THIRD FLOOR ELECTRICAL PLAN LIGHTING
S102	4TH FLOOR FRAMING PLAN	EL102	NEW WORK FOURTH FLOOR ELECTRICAL PLAN LIGHTING
S103	ROOF FRAMING PLAN	EP101	NEW WORK THIRD FLOOR ELECTRICAL PLAN POWER
S104	MACHINE ROOM & TOWER ROOF FRAMING PLANS	EP102	NEW WORK FOURTH FLOOR ELECTRICAL PLAN POWER
S105	ENLARGED PLAN & DETAILS	EP103	NEW WORK ROOF ELECTRICAL PLAN-POWER
S106	GENERATOR PLATFORM PLAN & DETAILS	EP104	NEW WORK 2ND FLOOR DEMOLITION 3RD AND 4TH FLOOR ELECTRICAL PLANS
S201	ELEVATIONS	EP401	NEW WORK ELECTRICAL FOURTH FLOOR PLANS POWER AND SPECIAL SYSTEMS
S301	SECTIONS & DETAILS	EP402	COURTYARD, ELEVATOR EQUIPMENT, & ROOM B5-23 ELECTRICAL PLANS
S302	SECTIONS & DETAILS	ET101	NEW WORK THIRD FLOOR ELECTRICAL PLAN SPECIAL SYSTEMS
S303	SECTIONS & DETAILS	ET102	NEW WORK FOURTH FLOOR ELECTRICAL PLAN SPECIAL SYSTEMS
S304	SECTIONS & DETAILS	E501	DETAILS ELECTRICAL
S305	SECTIONS & DETAILS	E601	PANELBOARD SCHEDULES ELECTRICAL
S306	SECTIONS & DETAILS	E602	PANELBOARD SCHEDULES ELECTRICAL
S307	SECTIONS & DETAILS	E603	PANELBOARD SCHEDULES ELECTRICAL
S308	SECTIONS & DETAILS		
S309	SECTIONS & DETAILS		
S310	SECTIONS & DETAILS		
S601	COLUMN SCHEDULE		
PLUMBING			
PP001	GENERAL NOTES, ABBREVIATIONS AND SYMBOLS		
PD101	WASTE, DRAIN, AND VENT PIPING SECOND FLOOR DEMOLITION PLAN		
PD102	WASTE, DRAIN, AND VENT PIPING ROOF DEMOLITION PLAN		
PD201	LARGE-SCALE THIRD AND FOURTH FLOOR DEMOLITION PLAN		
PP101	DOMESTIC WATER DISTRIBUTION THIRD FLOOR PLAN		

## FINAL SUBMITTAL

Revisions:	Date:	CONSULTANTS:		ARCHITECT:  590 Means Street NW, Suite 200 Atlanta, GA 30318 404.214.9774	Drawing Title: DRAWING INDEX, MOUNTING HEIGHTS, NOTES AND ACCESSIBILITY	Project Title: EXPAND RADIOLOGY AND SPS OVERTON BROOKS VAMC	Project Number: 667-083	Office of Construction and Facilities Management  U.S. Department of Veterans Affairs
					Approved: Project Director	Location: SHREVEPORT, LA	Building Number: 1	
						Date: 04-17-2015	Drawing Number: G001	
						Checked: XX	Dwg. 02 of 160	
						Drawn: XX		