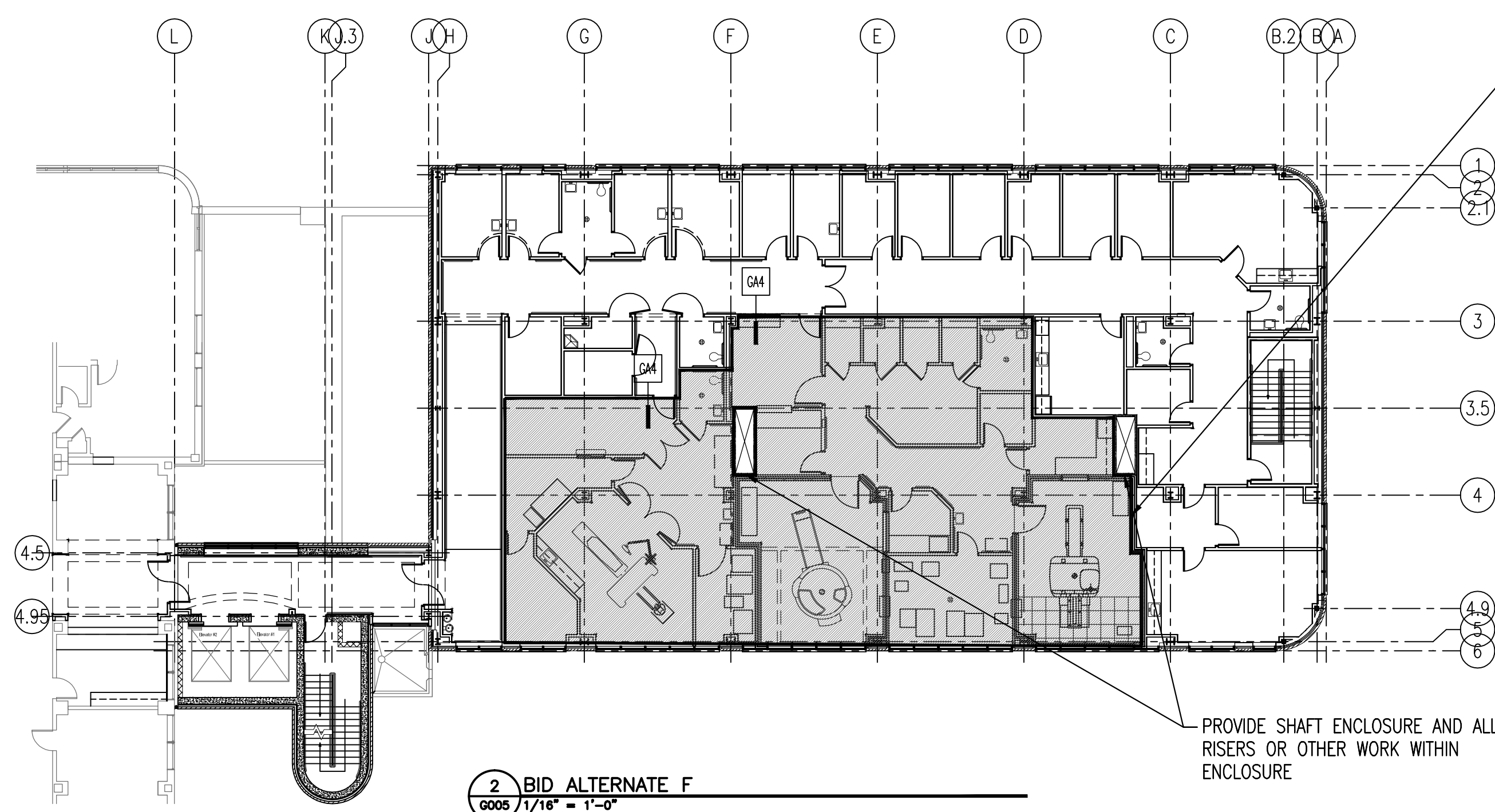


1. THIRD FLOOR TO BE CONSTRUCTED AS SHOWN IN ALL ALTERNATES.
2. EXTERIOR SKIN, STRUCTURE AND ROOF TO BE CONSTRUCTED AS SHOWN IN ALL ALTERNATES.
3. SPRAY-ON FIREPROOFING AND ALL OTHER LIFE-SAFETY REQUIRED WORK TO BE PROVIDED WITHIN AREAS OF ALTERNATES.



BID ALTERNATE E NOTE:

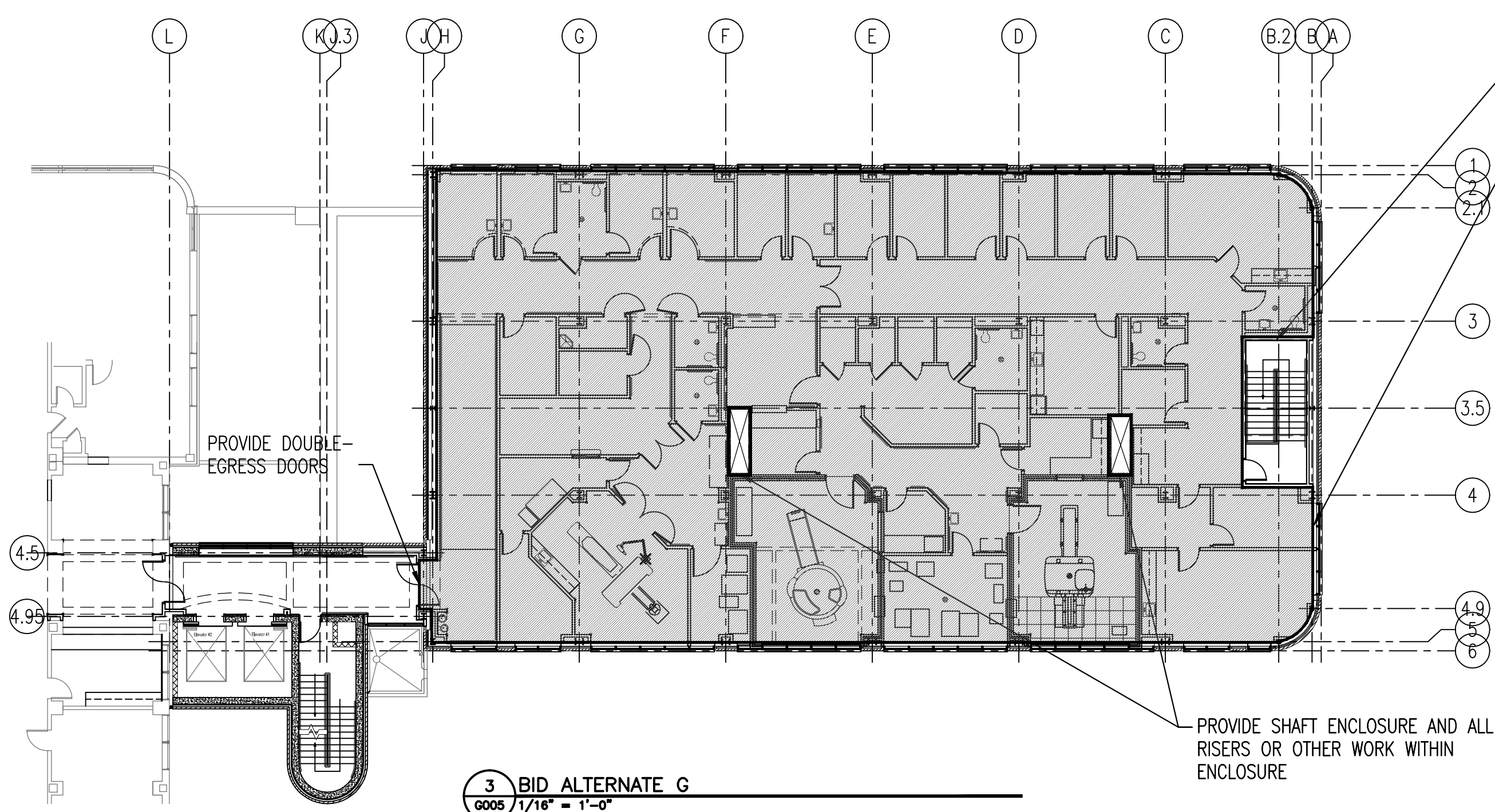
DELETE ALL MECHANICAL WORK IN THIS SHADED AREA. THIS INCLUDES THE FOLLOWING: VARIABLE VOLUME BOXES VAW-413, VAW-414, VAW-416, VAW-423, VAW-424, VAW-425, VAW-426, VAW-427, VAW-428, AND EMERGENCY EXHAUST FANS EF-1-4SRF-6 AND EF-1-4SRF-7. SUPPLY DUCT FROM AH-1-4SRF-3, PROVIDE 46X20 ENL CAP AFTER 28X18 TAKE-OFF. THIS SHALL INCLUDE CONTROLS, DIFFUSERS/GRILLES, PIPING, RETURN AND SUPPLY DUCTWORK.

DELETE ALL ELECTRICAL WORK SHOWN ON NEW WORK PLANS AND REPLACE WITH MINIMUM (8) TYPE "D" FIXTURES AND (1) LIGHT SWITCH ADJACENT DOORWAY. PROVIDE (1) DUPLEX RECEPTACLE. ALL BRANCH CIRCUITING ENTERING AND LEAVING BID ALTERNATE AREA SHALL BE TERMINATED AT JUNCTION BOX. ABOVE ACCESSIBLE CEILING AND BRANCH CIRCUIT LABELED FOR FUTURE INSTALLATIONS. COORDINATE ALL ELECTRICAL INSTALLATIONS NOT INCLUDED IN BID ALTERNATE ARE IN PROPER WORKING ORDER AT COMPLETION OF WORK.

BID ALTERNATE F NOTE:

DELETE ALL MECHANICAL WORK IN THIS SHADED AREA. THIS INCLUDES THE FOLLOWING: VARIABLE VOLUME BOXES VAV-413, VAV-414, VAV-416, VAV-423, VAV-424, VAV-425, VAV-426, VAV-427, AND VAV-428, VAV-429 VAV-430, AND VAV-431, EMERGENCY EXHAUST FANS EF-1-45RF-6 AND EF-1-45RF-7, AND AIR HANDLING UNIT AH-1-45RF-3 SUPPLY AND RETURN DUCT. AFTER VAV-412 END CAP 1438 SUPPLY. AFTER TAKE-OFF FROM TOILET 414, INSTALL 10" DIAMETER DUCT END CAP. EXHAUST DUCT FROM EF-1-45RF-5 END CAP 12X12 AFTER LAST 6" DIAMETER TAKE-OFF FROM SPACE HAC-404. THIS SHALL INCLUDE CONTROLS, DIFFUSERS/GRILLES, PIPING, RETURN AND SUPPLY DUCTWORK.

DELETE ALL ELECTRICAL WORK SHOWN ON NEW WORK PLANS AND REPLACE WITH MINIMUM (14) TYPE "D" FIXTURES AND (1) LIGHT SWITCH ADJACENT DOORWAY AT EACH SEPARATE LOCATION. PROVIDE (1) DUPLEX RECEPTACLE IN EACH SEPARATE LOCATION. ALL BRANCH CIRCUITING ENTERING AND LEAVING BID ALTERNATE AREA SHALL BE TERMINATED AT JUNCTION BOX, ABOVE EACH CEILING AND BRANCH CIRCUIT LABELED FOR FUTURE INSTALLATIONS. DELETE ALL ELECTRICAL ASSOCIATED WITH ROOF MECHANICAL EQUIPMENT BEING REMOVED IN BID ALTERNATE. COORDINATE ALL ELECTRICAL INSTALLATIONS NOT INCLUDED IN BID ALTERNATE ARE IN PROPER WORKING ORDER AT COMPLETION OF WORK.



BID ALTERNATE C. NOTE:

DELETE ALL MECHANICAL WORK IN THIS SHADED AREA. THIS INCLUDES THE FOLLOWING: ALL VARIABLE VOLUME BOXES, EXHAUST FANS EF-1-45SR-4, EF-1-45SR-5, EF-1-45SR-6 AND EF-1-45SR-7, AIR HANDLING UNITS AH-1-45SR-2 AND AH-1-45SR-3, SHAFF INCLUDES CONTROLS, DIFFUSERS/GRILLES, PIPING, EXHAUST, RETURN AND SUPPLY DUCTWORK.

DELETE ALL ELECTRICAL WORK SHOWN ON NEW WORK PLANS AND REPLACE WITH MINIMUM (20) TYPE "D" FIXTURES AND (1) LIGHT SWITCH ADJACENT DOORWAY.

PROVIDE (1) DUPLEX RECEPTACLE. DELETE ALL ELECTRICAL IN SPACE, LEAVING (1) ELECTRICAL PANEL, SURFACE MOUNTED, STARTWELL WALL. DELETE ALL ELECTRICAL WIRING AND DISCONNECTED MECHANICAL EQUIPMENT BEING REMOVED IN BID ALTERNATE.

COORDINATE ALL ELECTRICAL INSTALLATIONS NOT INCLUDED IN BID ALTERNATE ARE IN PROPER WORKING ORDER AT COMPLETION OF WORK.

[illegible]