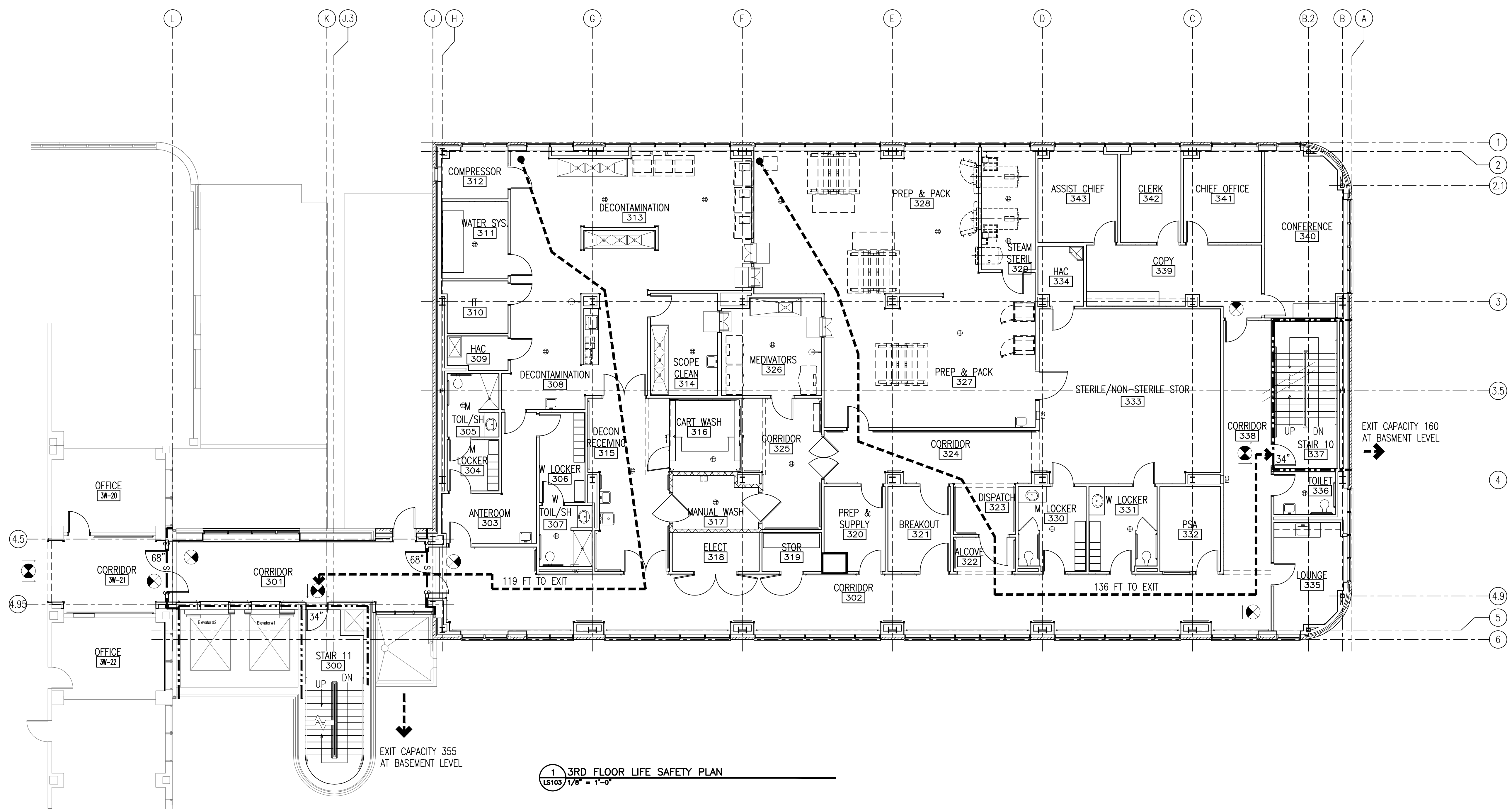


Drawing File: \\Projects\1313 Renovate Radiology & SPS VA Shreveport\3 1313 Drawings\RENOVATE RADIOLOGY & SPS - VA Shreveport\Sheets\LS103 3RD FLOOR LIFE SAFETY PLAN.dwg  
Plotted Date: May 20, 2015 - 3:55pm  
G  
one-eighth inch = one foot

A three inches = one foot  
B one and one-half inches = one foot  
C one inch = one foot  
D three-quarters inch = one foot  
E one-half inch = one foot  
F three-eighths inch = one foot  
G one-quarter inch = one foot  
H one-eighth inch = one foot

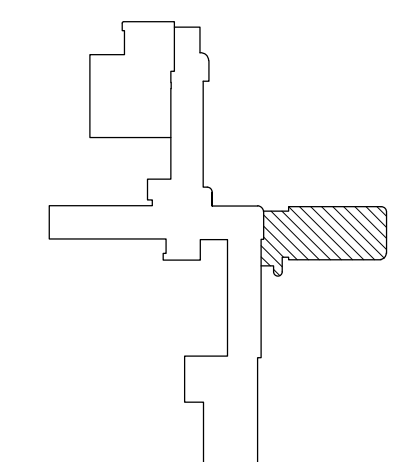


### CODE ANALYSIS

OCCUPANCY CLASSIFICATIONS:		AMBULATORY HEALTH CARE BY LSC 2009 INSTITUTIONAL GROUP I-1 BY IBC 2009 NEW ADDITION TO EXISTING HEALTH CARE OCCUPANCY EXISTING HEALTH CARE OCCUPANCY IS IN COMPLIANCE WITH LIFE SAFETY CODE, CHAPTER 19.
OCCUPANCY LOAD (TABLE 7.3.1.2) THIRD & FOURTH FLOORS		100 gross sf/occupant (AMBULATORY HEALTH CARE) 9480 sf/100 = 95 OCCUPANTS
CONSTRUCTION TYPE (TABLE 18.1.6.1 LSC):		TYPE 1 (332); TYPE 1A IBC
ALLOWABLE HEIGHT (TABLE 503 IBC 2009):		UL
ALLOWABLE AREA (TABLE 503 IBC 2009):		UL
REQUIRED RATINGS (TABLE A.8.2.1.2):		
BEARING WALLS		3 HOURS
STRUCTURAL FRAME		3 HOURS
FLOOR CONSTRUCTION		2 HOURS
ROOF CONSTRUCTION		1-1/2 HOURS
CORRIDOR WALLS (18.3.6.2.2)		0 HOURS
STAIRS (8.6.5)		2 HOURS
MEANS OF EGRESS:		
EGRESS WIDTH (7.3.3.1)		
STAIRS 0.3 INCH/OCCUPANT SERVED		0.3"x95 = 28.5" REQUIRED <96" AVAILABLE
OTHER 0.2 INCH/OCCUPANT SERVED		0.2"x95 = 19.0" REQUIRED <68" AVAILABLE
EXIT TRAVEL DISTANCE (18.2.6.2.1)		200 FT
COMMON PATH OF TRAVEL (18.2.5.3)		100 FT
CORRIDOR WIDTH (18.2.3.5)		6 FT
DOOR WIDTH (18.3.7.6)		32 IN
DEAD END CORRIDOR (18.2.5.2)		30 FT
VERTICAL EXIT ENCLOSURE (7.1.3.2.1)		2 HR.
MINIMUM EXIT PER FLOOR (18.2.4)		2
MINIMUM STAIR WIDTH (TABLE 7.2.2.2.1.2(b))		44 IN
OTHER:		
POSITIVE LATCHING AT CORRIDOR DOORS (18.3.6.3.5)		
NOTE:		
PROVIDE THE FOLLOWING UL RATINGS:		
FLOOR ASSEMBLIES (D858)		3 HOURS
BEAMS (N823)		3 HOURS
COLUMNS (X829)		3 HOURS
PROVIDE SPRAY FIREPROOFING ON COLS, BEAMS, AND DECKING TO ACHIEVE REQ'D RATING. FIREPROOFING NOT REQ'D ON HSS AT WDW HEADS AND SILLS.		
LIFE SAFETY REQUIREMENTS ARE BASED ON CURRENT AND FUTURE BUILD-OUT THROUGH 5TH FLOOR		

### LIFE SAFETY PLAN LEGEND

SMOKE BARRIER (30 MIN)	-----	FIRE EXTINGUISHER CABINET	□FEC
1 HR FIRE BARRIER	----	TOTAL TRAVEL DISTANCE TO EXIT	● XXX'-X"
2 HR FIRE BARRIER	----	TOTAL TRAVEL DISTANCE WITHIN A SMOKE COMPARTMENT TO AN EXIT	● XXX'-X"
INSTITUTIONAL OCCUPANCY	□	EXIT LIGHT	⊙
STORAGE OCCUPANCY	□	EMERGENCY LIGHT	⊙
		FIRE ALARM PULL	⊙



### FINAL SUBMITTAL

CONSULTANTS:			ARCHITECT:  <b>TOLAND MIZELL MOLNAR</b> 590 Means Street NW, Suite 200 Atlanta, GA 30318 404.214.9774	Drawing Title: <b>3RD FLOOR LIFE SAFETY PLAN</b>		Project Title: <b>EXPAND RADIOLOGY AND SPS OVERTON BROOKS VAMC</b>		Project Number: <b>667-083</b>		OFFICE OF CONSTRUCTION AND FACILITIES MANAGEMENT U.S. Department of Veterans Affairs		
Revisions:				Approved: Project Director		Location: <b>SHREVEPORT, LA</b>		Building Number: <b>1</b>				
Date:		Date:		Date:		Drawing Number: <b>LS103</b>		Dwg. 10 of 160				
Date:		Date:		Date:		Checked: XX		Drawn: XX				