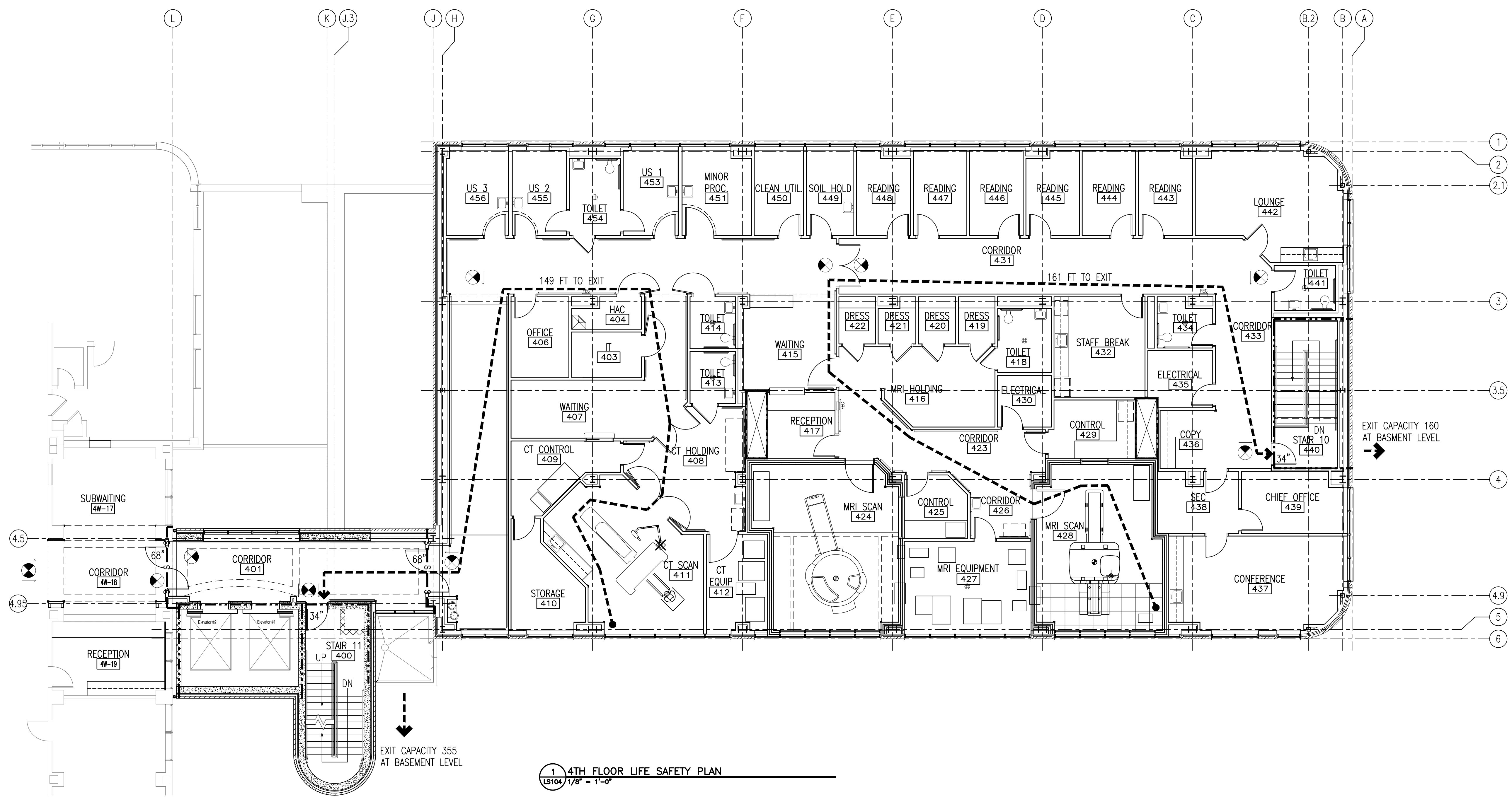


Drawing File: \\Projects\1313 Renovate Radiology & SPS VA Shreveport\3 1313 Drawings\RENOVATE RADIOLOGY & SPS - VA SHREVEPORT\Sheets\LS104 4TH FLOOR LIFE SAFETY PLAN.dwg  
Plotted Date: May 20, 2015 - 3:55pm  
G

one-eighth inch = one foot  
one-quarter inch = one foot  
three-eighths inch = one foot  
one-half inch = one foot  
three-quarters inch = one foot  
one inch = one foot  
one and one-half inches = one foot  
two inches = one foot  
three inches = one foot



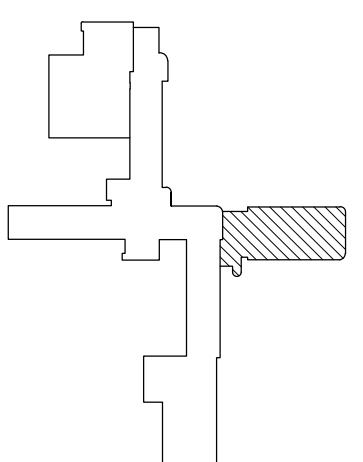
1 4TH FLOOR LIFE SAFETY PLAN  
LS104 / 1/8" = 1'-0"

### CODE ANALYSIS

OCCUPANCY CLASSIFICATIONS:		AMBULATORY HEALTH CARE BY LSC 2009 INSTITUTIONAL GROUP I-1 BY IBC 2009 NEW ADDITION TO EXISTING HEALTH CARE OCCUPANCY EXISTING HEALTH CARE OCCUPANCY IS IN COMPLIANCE WITH LIFE SAFETY CODE, CHAPTER 19.
OCCUPANCY LOAD (TABLE 7.3.1.2) THIRD & FOURTH FLOORS		100 gross sf/occupant (AMBULATORY HEALTH CARE) 9480 sf/100 = 95 OCCUPANTS
CONSTRUCTION TYPE (TABLE 18.1.6.1 LSC):		TYPE 1 (332); TYPE 1A IBC
ALLOWABLE HEIGHT (TABLE 503 IBC 2009):		UL
ALLOWABLE AREA (TABLE 503 IBC 2009):		UL
REQUIRED RATINGS (TABLE A.8.2.1.2):		
BEARING WALLS		3 HOURS
STRUCTURAL FRAME		3 HOURS
FLOOR CONSTRUCTION		2 HOURS
ROOF CONSTRUCTION		1-1/2 HOURS
CORRIDOR WALLS (18.3.6.2.2)		0 HOURS
STAIRS (8.6.5)		2 HOURS
MEANS OF EGRESS:		
EGRESS WIDTH (7.3.3.1)		
STAIRS 0.3 INCH/OCCUPANT SERVED		0.3"x95" = 28.5" REQUIRED <96" AVAILABLE
OTHER 0.2 INCH/OCCUPANT SERVED		0.2"x95" = 19.0" REQUIRED <68" AVAILABLE
EXIT TRAVEL DISTANCE (18.2.6.2.1)		200 FT
COMMON PATH OF TRAVEL (18.2.5.3)		100 FT
CORRIDOR WIDTH (18.2.3.5)		6 FT
DOOR WIDTH (18.3.7.6)		32 IN
DEAD END CORRIDOR (18.2.5.2)		30 FT
VERTICAL EXIT ENCLOSURE (7.1.3.2.1)		2 HR.
MINIMUM EXIT PER FLOOR (18.2.4)		2
MINIMUM STAIR WIDTH (TABLE 7.2.2.2.1.2(b))		44 IN
OTHER:		
POSITIVE LATCHING AT CORRIDOR DOORS		(18.3.6.3.5)
NOTE:		
PROVIDE THE FOLLOWING UL RATINGS:		
FLOOR ASSEMBLIES (D858)		3 HOURS
BEAMS (N823)		3 HOURS
COLUMNS (X829)		3 HOURS
PROVIDE SPRAY FIREPROOFING ON COLS, BEAMS, AND DECKING TO ACHIEVE REQ'D RATING. FIREPROOFING NOT REQ'D ON HSS AT WDW HEADS AND SILLS.		
LIFE SAFETY REQUIREMENTS ARE BASED ON CURRENT AND FUTURE BUILD-OUT THROUGH 5TH FLOOR		

### LIFE SAFETY PLAN LEGEND

SMOKE BARRIER (30 MIN)	-----	FIRE EXTINGUISHER CABINET	□FEC
1 HR FIRE BARRIER	----	TOTAL TRAVEL DISTANCE TO EXIT	● XXX'-X"
2 HR FIRE BARRIER	----	TOTAL TRAVEL DISTANCE WITHIN A SMOKE COMPARTMENT TO AN EXIT	● XXX'-X"
INSTITUTIONAL OCCUPANCY	□	EXIT LIGHT	⊙
STORAGE OCCUPANCY	□	EMERGENCY LIGHT	⊙
		FIRE ALARM PULL	⊙



### FINAL SUBMITTAL

Revisions:		Date:		CONSULTANTS:		ARCHITECT:		Drawing Title:		Project Title:		Project Number:		OFFICE OF CONSTRUCTION AND FACILITIES MANAGEMENT			
								4TH FLOOR LIFE SAFETY PLAN		EXPAND RADIOLOGY AND SPS OVERTON BROOKS VAMC		667-083		VA U.S. Department of Veterans Affairs			
								Approved: Project Director		Location:		SHREVEPORT, LA					
										Date:		Checked:					
										04-17-2015		XX					
												XX					
												LS104					
												Dwg.		11 of 160			