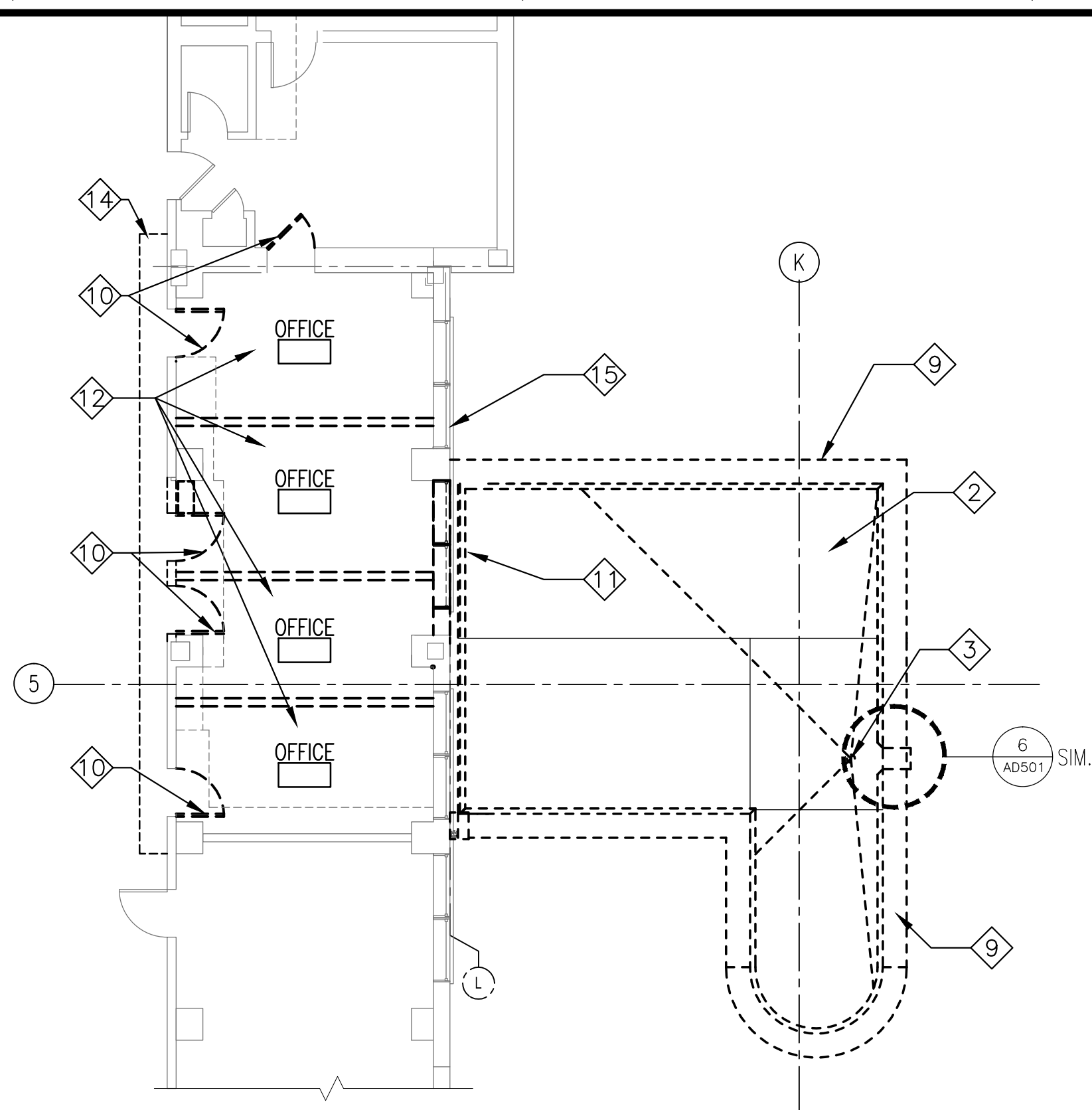
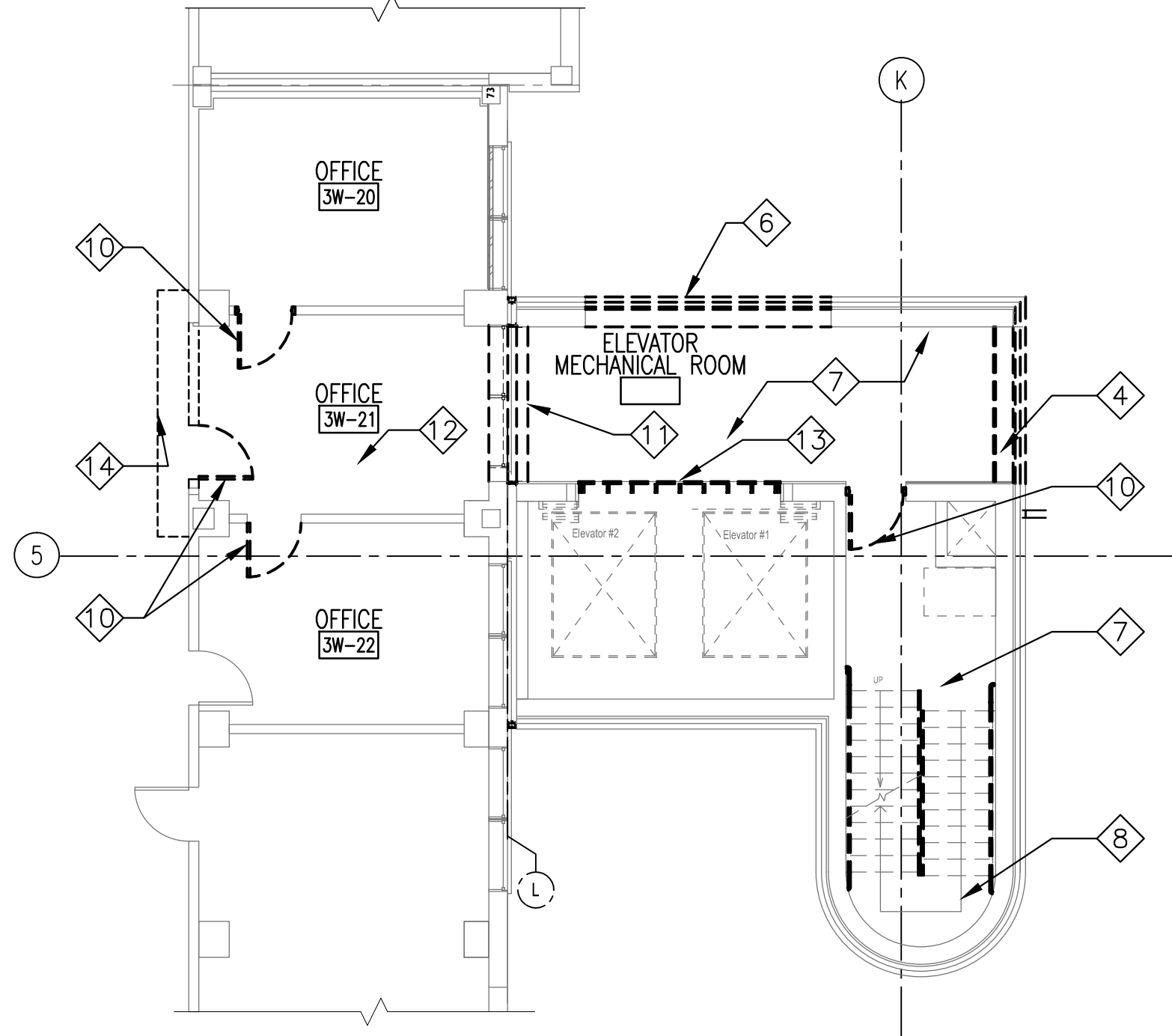


Drawing File: \\Projects\1313 Renovate Radiology & SPS VA Shreveport\3 1313 Drawings\RENOVATE RADIOLOGY & SPS - VA SHREVEPORT\Sheets\AD102 2ND, 3RD AND 4TH FLOOR DEMOLITION PLANS.dwg
Plotted Date: May 20, 2015 - 3:55pm
G

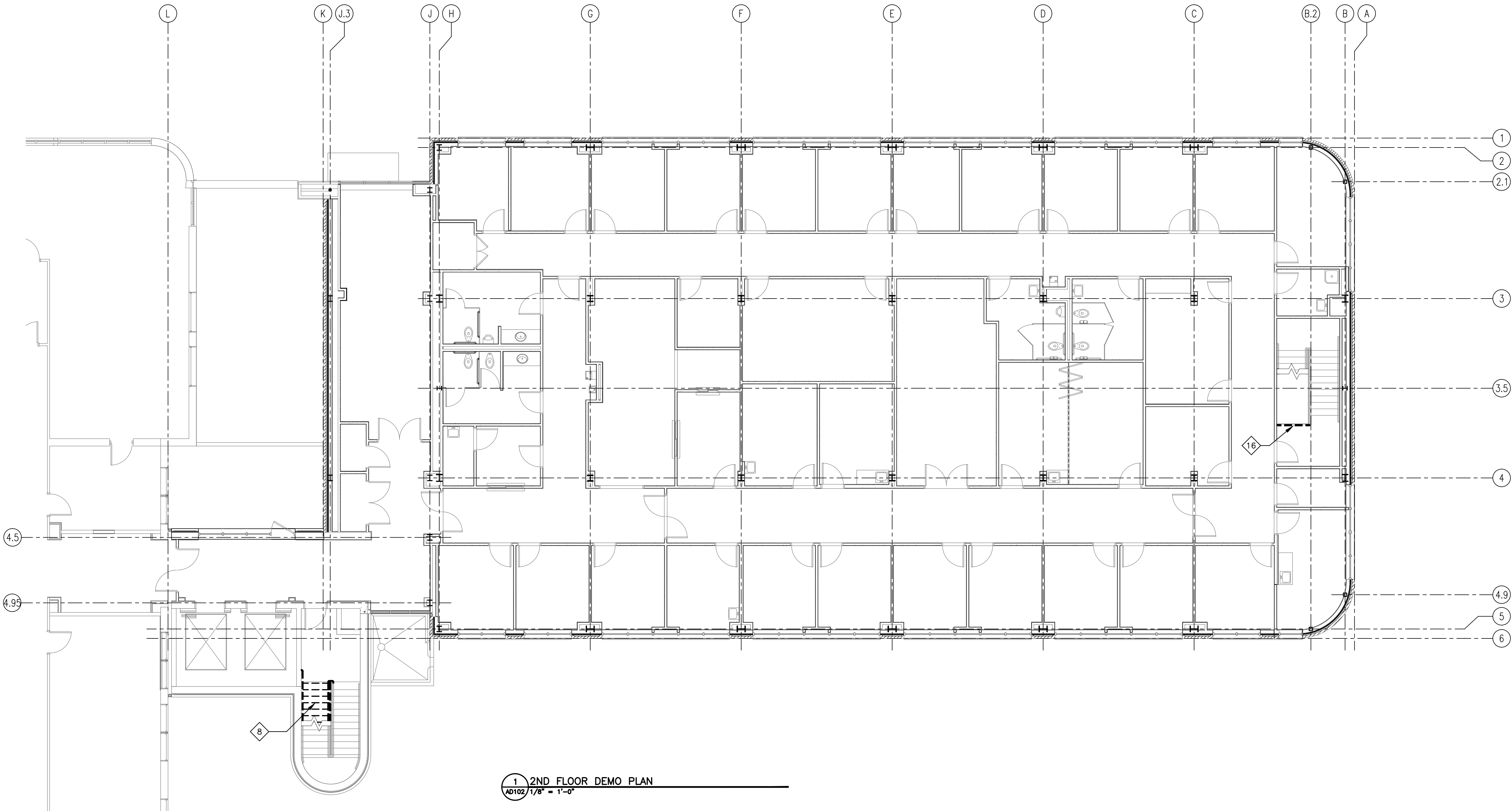
A three inches = one foot
B one and one-half inches = one foot
C one inch = one foot
D three-quarters inch = one foot
E one-half inch = one foot
F three-eighths inch = one foot
G one-quarter inch = one foot
H one-eighth inch = one foot



3 4TH FLOOR DEMO PLAN
AD102 1/8" = 1'-0"



2 3RD FLOOR DEMO PLAN
AD102 1/8" = 1'-0"



1 2ND FLOOR DEMO PLAN
AD102 1/8" = 1'-0"

DEMO LEGEND

== == == - DEMO WALL

--- --- --- - DEMO DOOR

1 - DEMOLITION NOTE

- DEMOLITION PLAN GENERAL NOTES**
- INTERIOR WALLS IN EXISTING MAIN BUILDING ARE INTERIOR DRYWALL ASSEMBLIES @ FLOORS 3, 6, 7, 8. STRUCTURAL WALL TILE WITH FURRED PLASTER @ ALL OTHER FLOORS, EXCEPT FOR INTERIOR OFFICE WALLS ON 4TH FLOOR.
 - EXTERIOR WALLS AT MAIN BUILDING ARE BRICK VENEER ON STRUCTURAL CLAY TILE WITH FURRED PLASTER OR DRYWALL INTERIOR.
 - CONTRACTOR MUST PROVIDE AND MAINTAIN A 2HR FIRE RATING BETWEEN EXISTING HOSPITAL SPACE AND CONSTRUCTION SPACE. THE 2HR RATING MUST BE MAINTAINED THROUGHOUT CONSTRUCTION UNTIL THE SPRINKLER SYSTEM ON THE CONSTRUCTION SIDE IS FULLY OPERATIONAL. IF ADDITION IS BUILT WITH OPERABLE SPRINKLER SYSTEMS EACH SIDE OF EXPANSION JOINT PRIOR TO ANY WORK IN EXISTING BUILDING, RATED SEPARATION WILL NOT BE REQUIRED.
 - RETURN ALL REMOVED WINDOWS TO GOVERNMENT.
 - EXISTING BUILDING CEILINGS VARY FROM CONCEALED SPLINE ACT TO STANDARD LAY-IN.
 - COORDINATE UTILITY & SYSTEMS REMOVAL WITH MD, PD, ED, SERIES DWGS.
 - REMOVE AND REPLACE OTHER WALL AND CEILING CONSTRUCTION AS REQUIRED FOR UTILITY AND PIPING DEMO AND NEW CONSTRUCTION.

- DEMOLITION PLAN KEY NOTES**
- REMOVE COPING, FLASHING AND ROOF PARAPET WALL.
 - REMOVE TAPERED INSULATION AND ROOF MEMBRANE. CONCRETE SLAB TO REMAIN.
 - REMOVE/REPLACE/REDIRECT VENT PIPES, DRAINS AS REQUIRED. SEE PLUMBING.
 - DEMOLISH AND REMOVE CMU WALL WITH BRICK VENEER.
 - REMOVE ROOFING DECK SLAB FOR STAIRS/TOWER EXTENSION. NO CONCRETE ON METAL DECK INSULATION ONLY.
 - REMOVE EXISTING LOUVER. STORE FOR REINSTALLATION AS SHOWN ON A201.
 - REMOVE EXISTING FLOOR SLAB.
 - REMOVE EXISTING STAIRS, HANDRAILS, AND GUARDRAILS.
 - REMOVE COPING, FLASHING, AND ROOF PARAPET WALL TO EXTENT INDICATED. SEE DETAIL 1/AD501 AND STRUCTURAL DWGS FOR ADDITIONAL INFO.
 - REMOVE DOOR AND FRAME COMPLETELY. TURN DOOR HARDWARE OVER TO THE GOVERNMENT.
 - REMOVE WALL AND WINDOWS TO EXTENT INDICATED, FULL HEIGHT.
 - REMOVE FLOOR FINISH, BASE, CEILING, AND SOFFITS.
 - REMOVE TEMPORARY ELEVATOR SHAFT CLOSURE.
 - PROVIDE DUST BARRIER DURING CONSTRUCTION AS NOTED ABOVE IN GENERAL DEMOLITION NOTES. SEE GENERAL NOTE #3.
 - REMOVE DRYWALL ASSEMBLY IN FRONT OF WINDOWS. CLEAN, REFINISH AND REPLACE WINDOW.
 - REMOVE EXISTING HANDRAIL AND GUARDRAIL. PREP LANDING FOR ADDITION OF NEW STAIR.
 - REMOVE EXISTING ROOF SLAB AND INSULATION FOR NEW HVAC CHASE.
 - DEPRESSED SLAB FOR CART WASH
 - EXISTING MECHANICAL EQUIPMENT TO BE REMOVED

NOTE:

EXISTING ROOF MEMBRANE IS LOOSE LAID AND BALLASTED EPDM. ROOF INSULATION IS RIGID TAPERED. BALLAST MAY BE STOCKPILED AND USED ON NEW ROOF SUBJECT TO ROOF MFR CRITERIA.

PLAN NORTH TRUE NORTH

0' 4' 8' 16' 24'

SCALE: 1/8" = 1'-0"

Revisions:		CONSULTANTS:				ARCHITECT: 590 Means Street NW, Suite 200 Atlanta, GA 30318 404.214.9774		Drawing Title: 2ND, 3RD AND 4TH FLOOR DEMOLITION PLANS		Project Title: EXPAND RADIOLOGY AND SPS OVERTON BROOKS VAMC		Project Number: 667-083		OFFICE OF CONSTRUCTION AND FACILITIES MANAGEMENT U.S. Department of Veterans Affairs	
								Approved: Project Director		Location: SHREVEPORT, LA		Building Number: 1			
										Date: 04-17-2015		Checked: XX			
												Dwg.: 12 of 160			