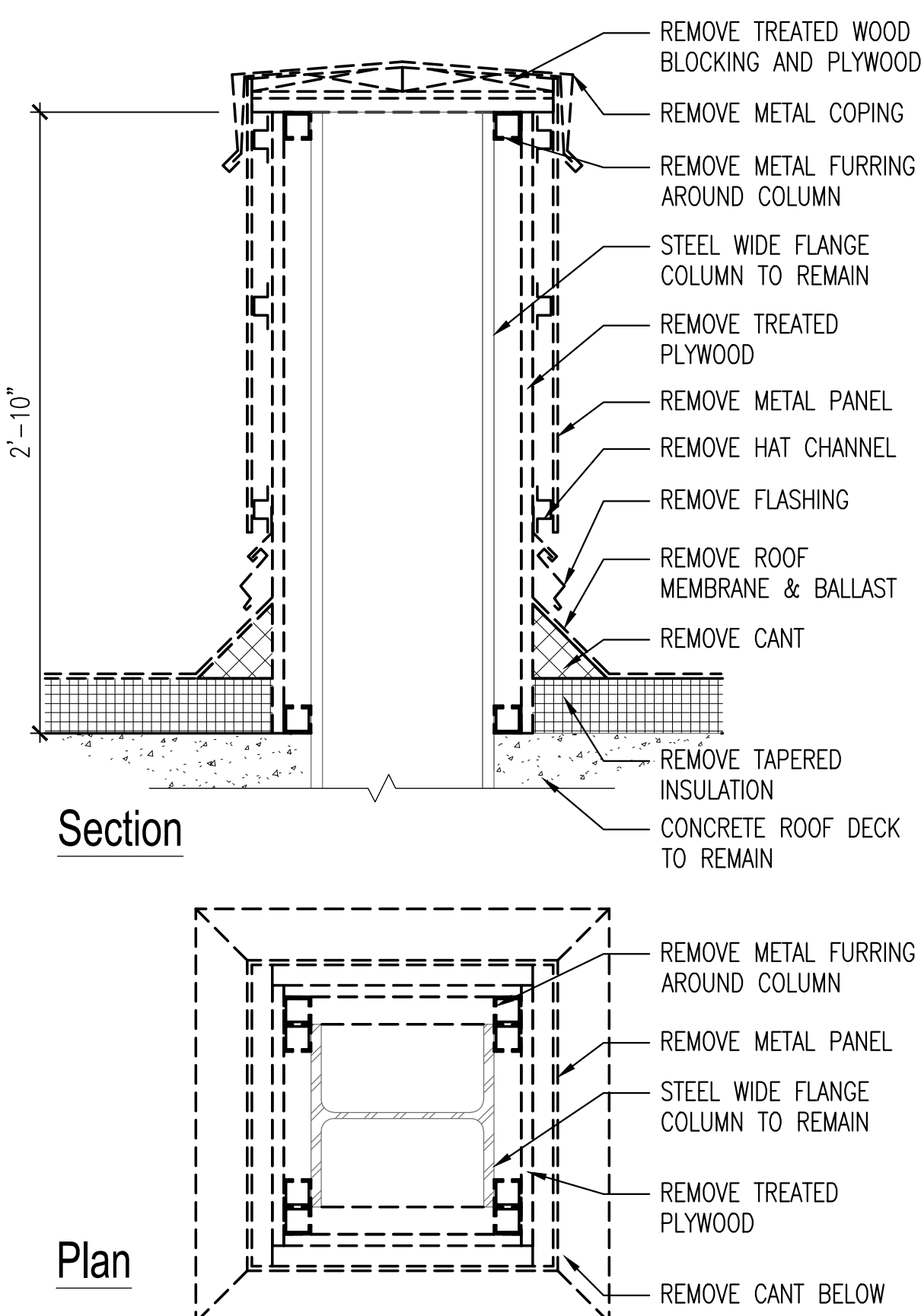
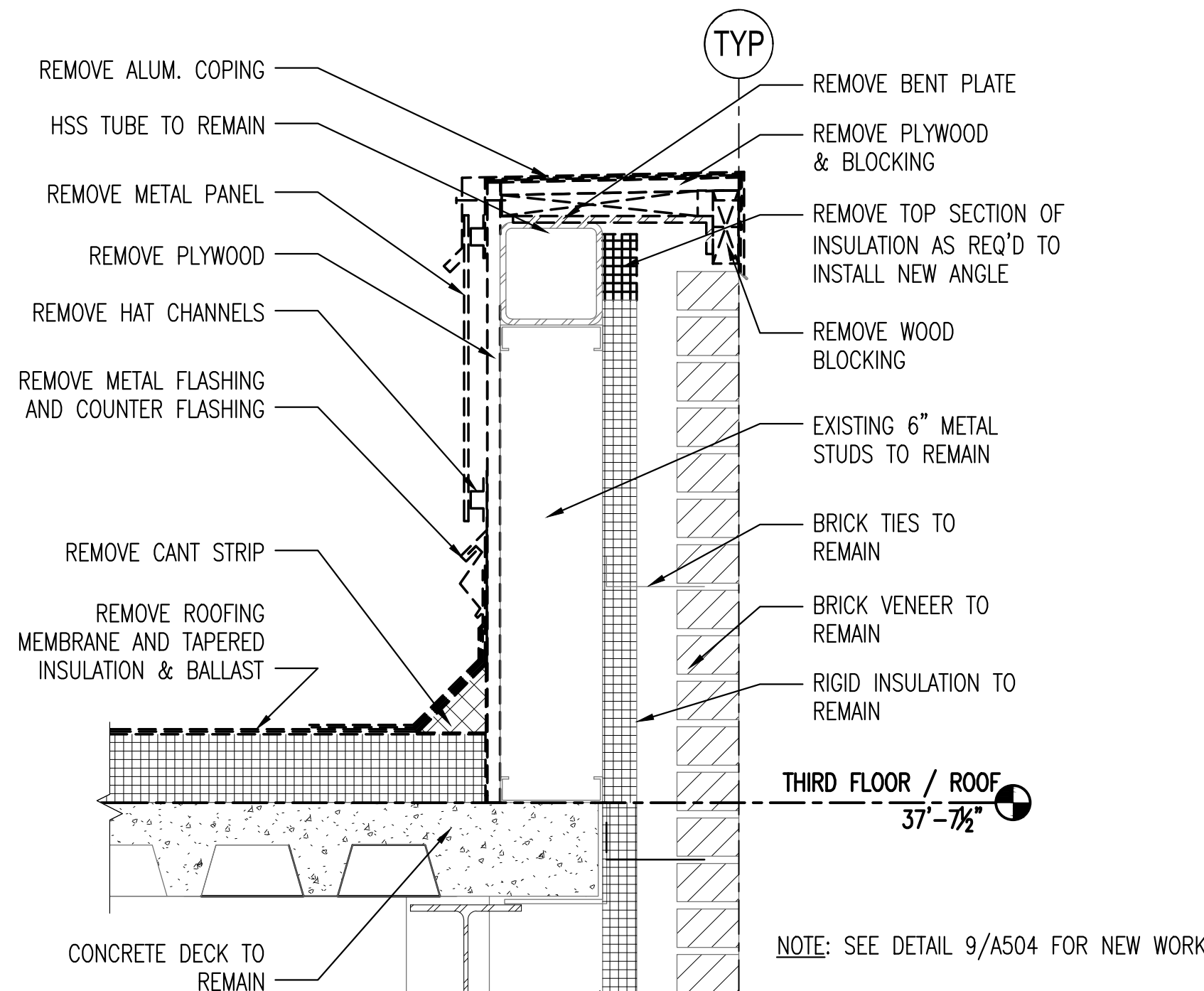


Drawing File: \\Projects\1313 Renovation Radiology & SPS - VA Shreveport\Drawings\Demolition Details.dwg
Plotted by: haneed
Date: May 20, 2015 3:55pm

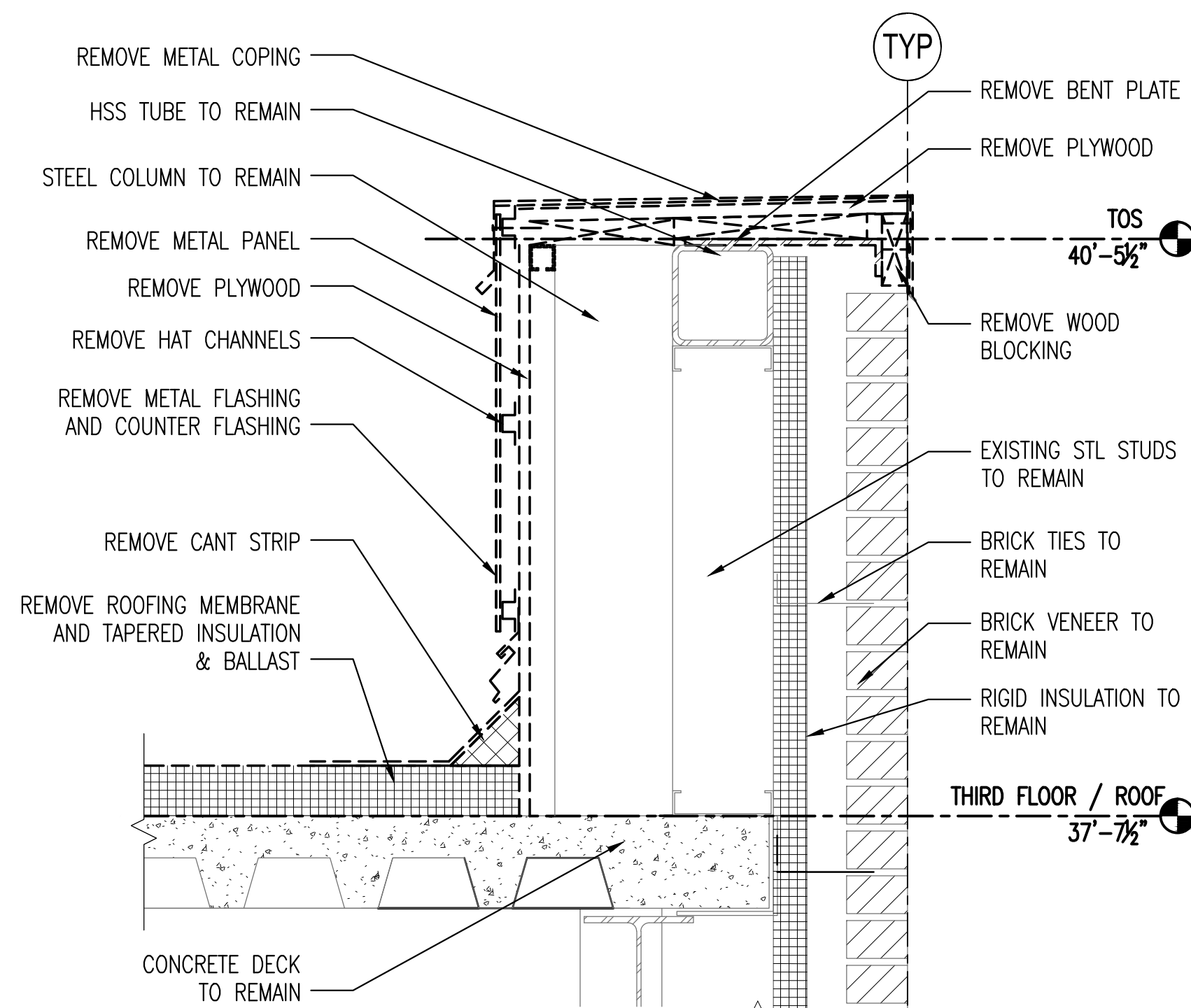
A three inches = one foot
B one one-half inches = one foot
C one inch = one foot
D three-quarters inch = one foot
E one-half inch = one foot
F three-eighths inch = one foot
G one-quarter inch = one foot
H one-eighth inch = one foot



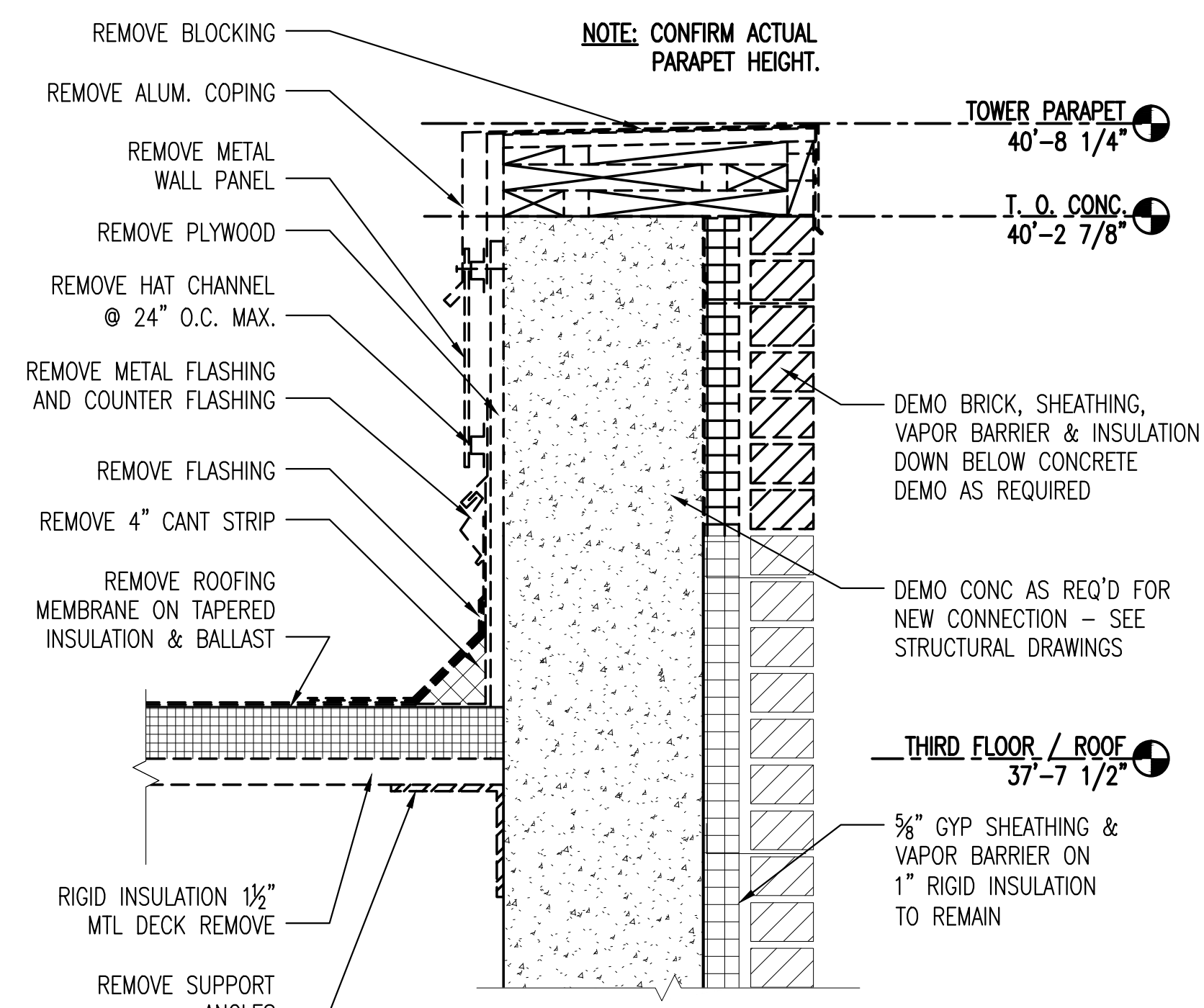
4 DEMO DETAIL AT COLUMN
A5001 1 1/2" = 1'-0"



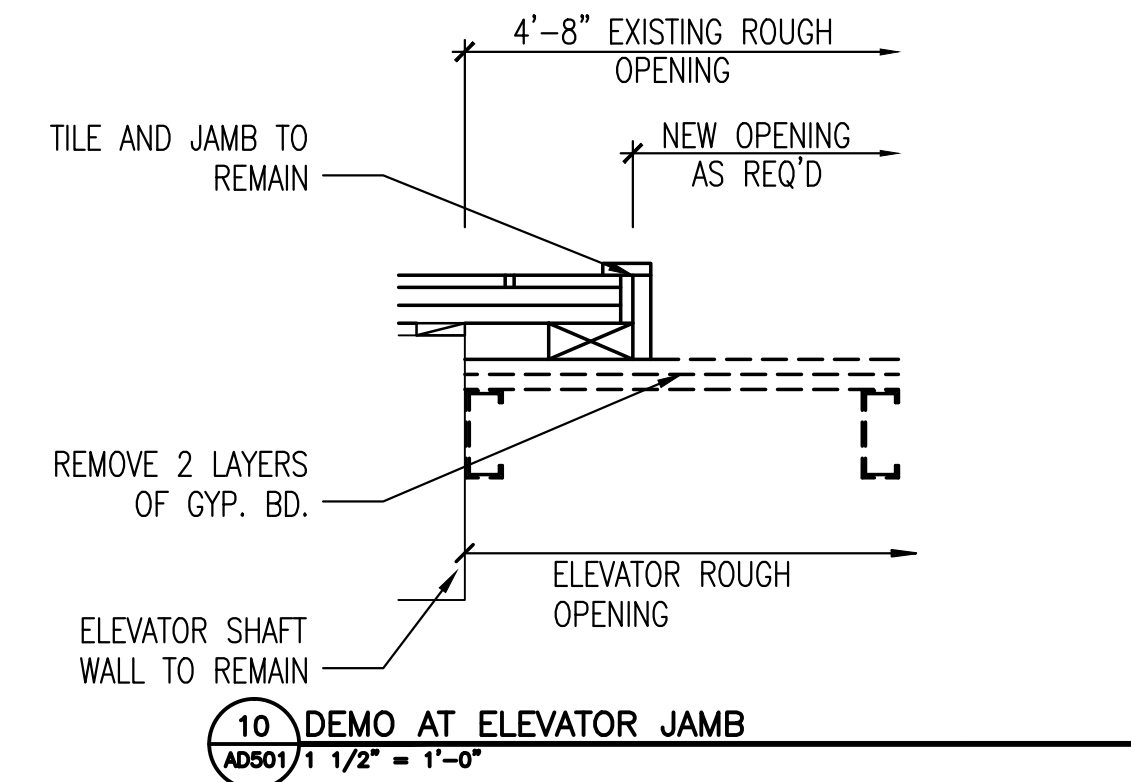
3 DEMO DETAIL AT ROOF PARAPET
A5001 1 1/2" = 1'-0"



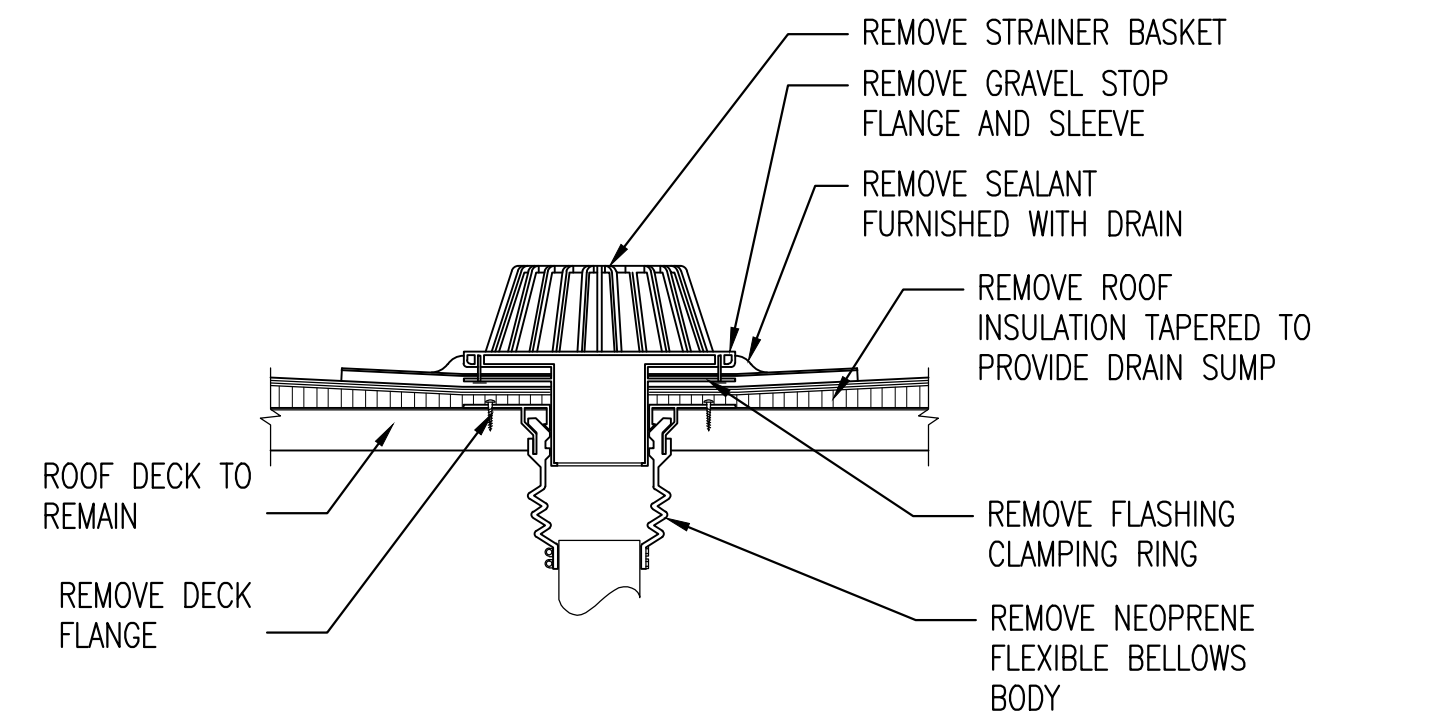
2 DEMO DETAIL AT COLUMN ALONG PARAPET WALL
A5001 1 1/2" = 1'-0"



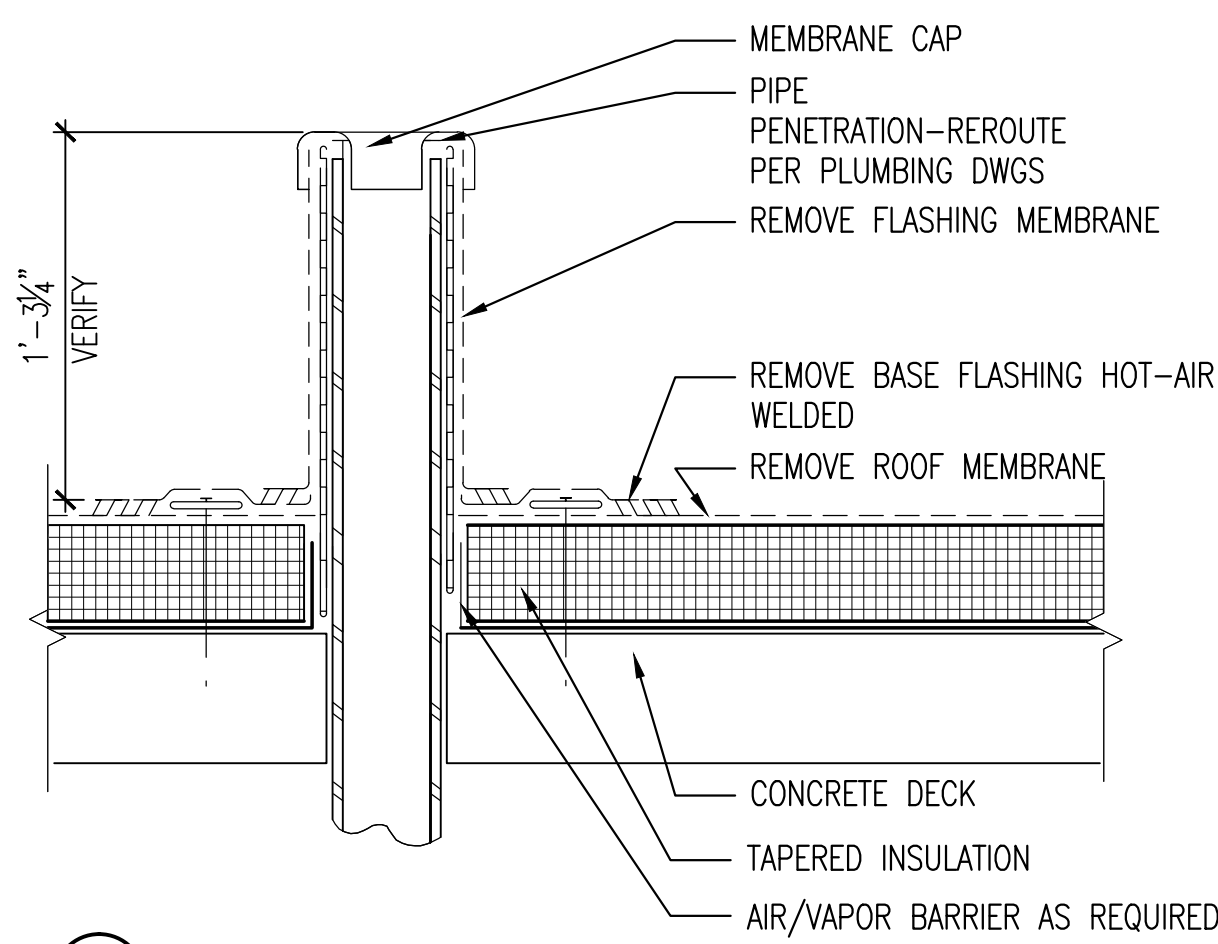
1 DEMO DETAIL AT STAIR TOWER PARAPET
A5001 1 1/2" = 1'-0"



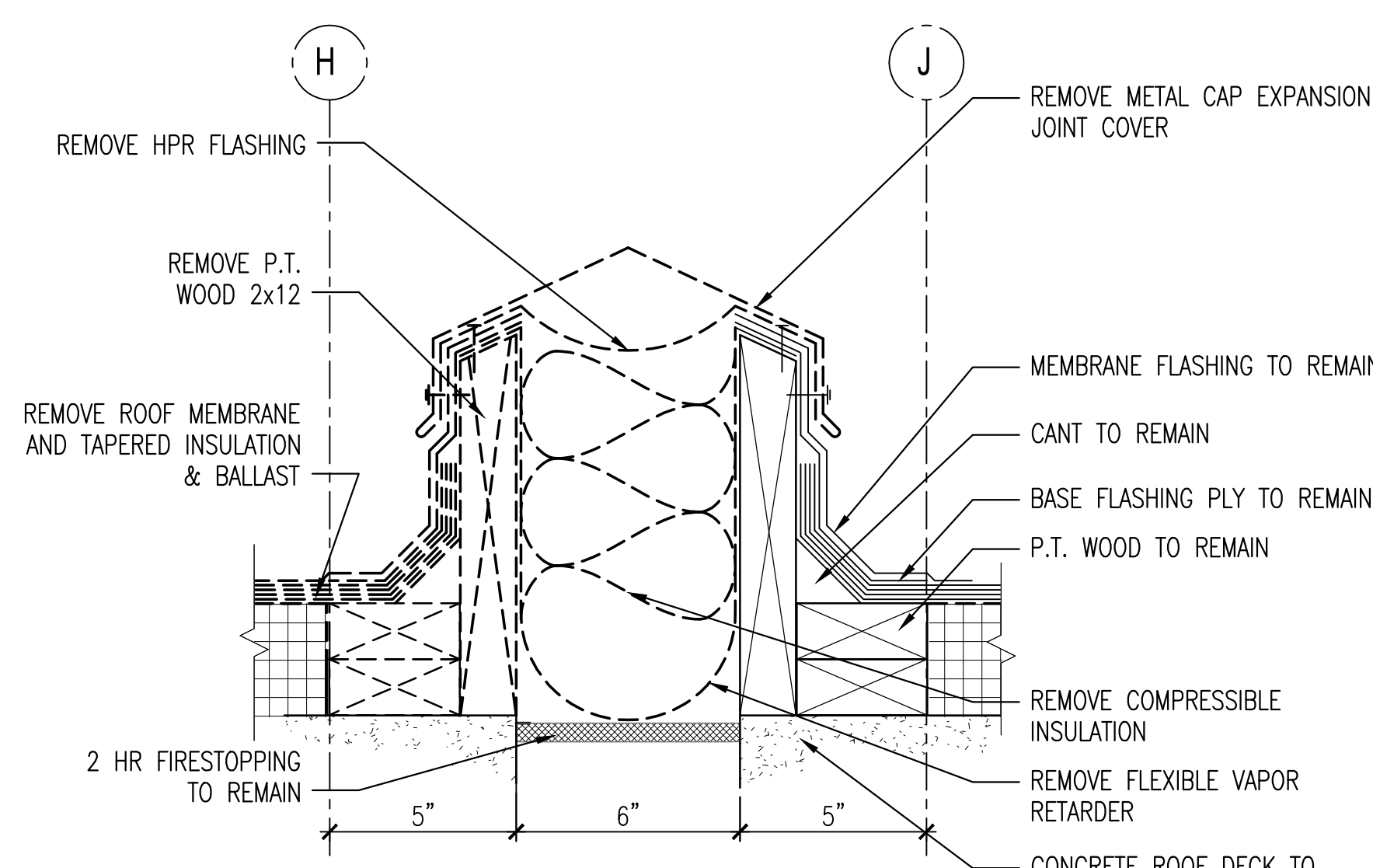
10 DEMO AT ELEVATOR JAMB
A5001 1 1/2" = 1'-0"



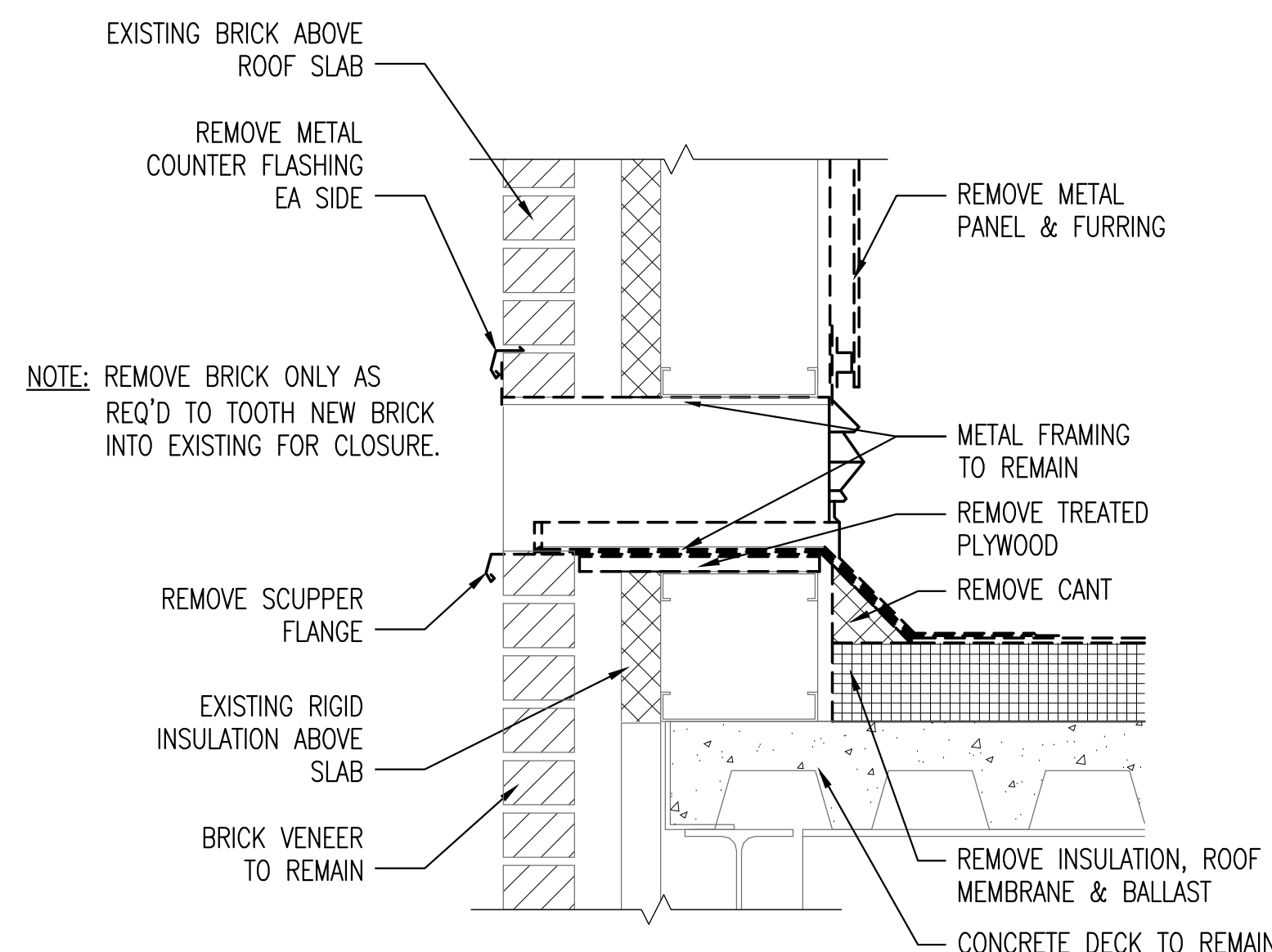
9 DEMO ROOF DRAIN
A5001 1 1/2" = 1'-0"



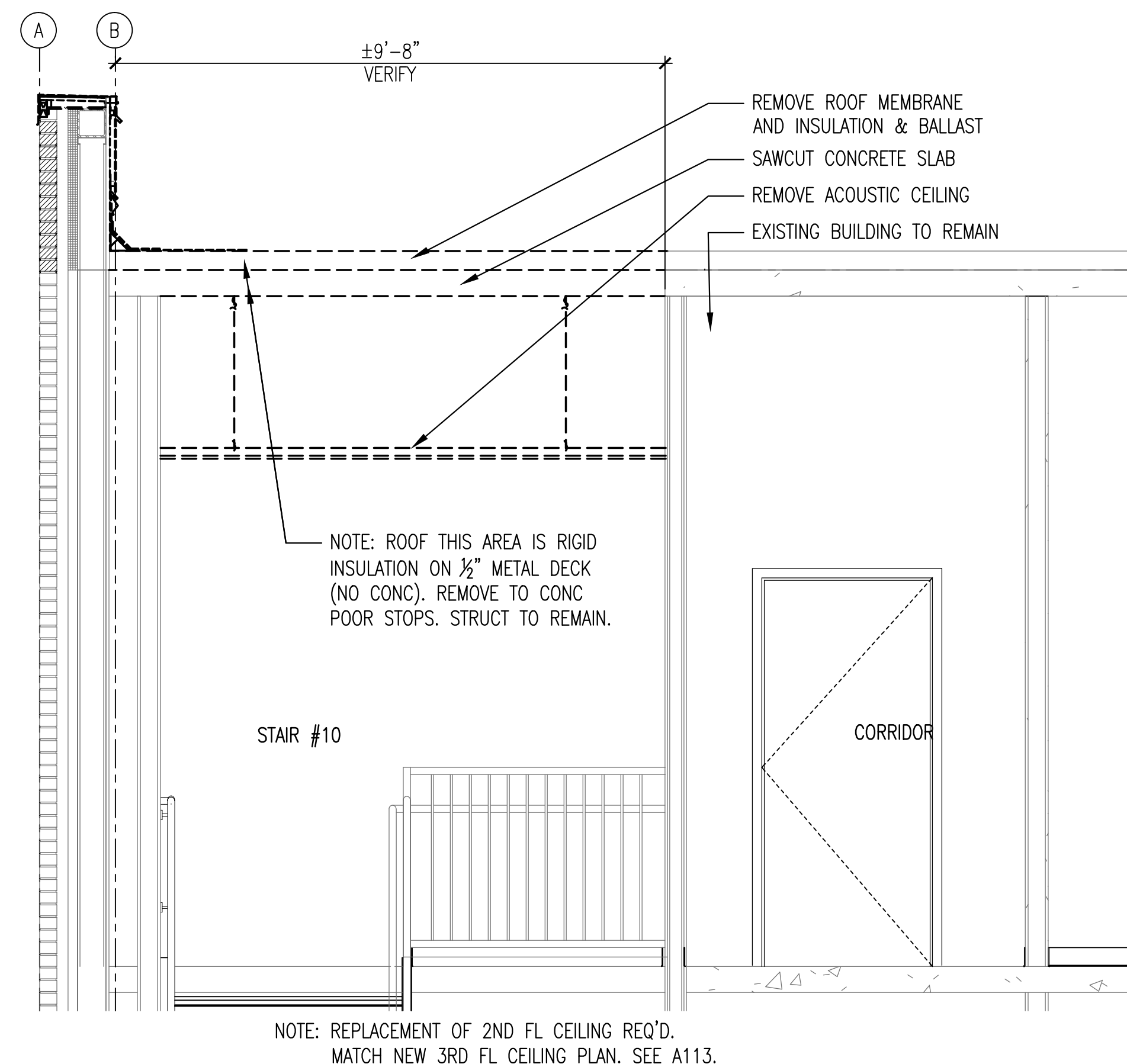
7 DEMO PLUMBING VENT
A5001 1 1/2" = 1'-0"



8 DEMO DETAIL AT EXPANSION JOINT
A5001 3" = 1'-0"



6 DEMO DETAIL AT SCUPPER
A5001 1 1/2" = 1'-0"



5 ROOF DEMOLITION AT STAIR #10
A5001 1/2" = 1'-0"

Revisions:		Date:		CONSULTANTS:				ARCHITECT: TOLAND MIZELL MOLNAR 590 Means Street NW, Suite 200 Atlanta, GA 30318 404.214.9774		Drawing Title: DEMOLITION DETAILS Approved: Project Director		Project Title: EXPAND RADIOLOGY AND SPS OVERTON BROOKS VAMC Location: SHREVEPORT, LA Date: 04-17-2015 Checked: XX Drawn: XX		Project Number: 667-083 Building Number: 1 Drawing Number: AD501 Dwg. 15 of 160		FINAL SUBMITTAL OFFICE OF CONSTRUCTION AND FACILITIES MANAGEMENT U.S. Department of Veterans Affairs	
------------	--	-------	--	--------------	--	--	--	--	--	---	--	--	--	--	--	---	--