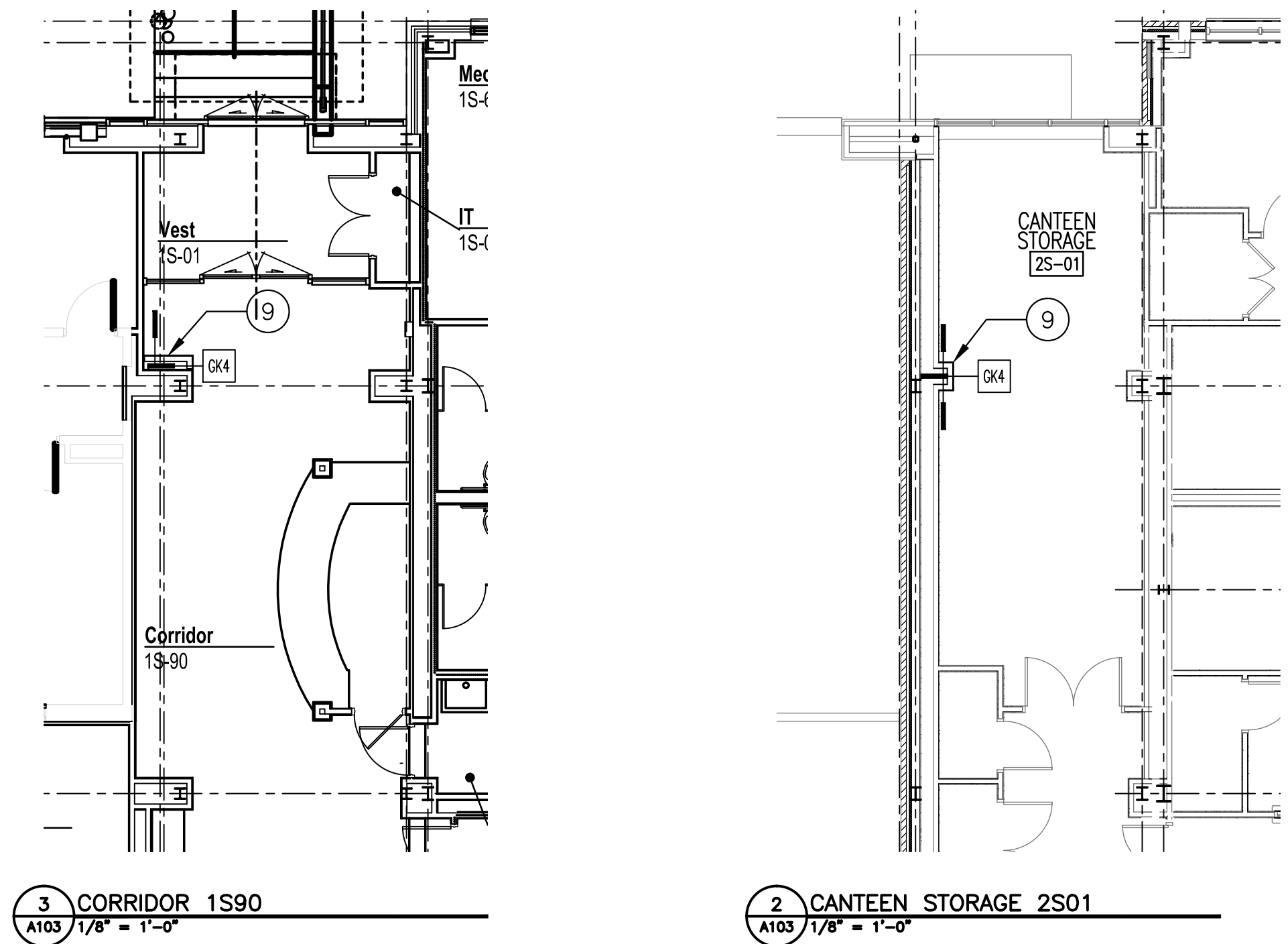
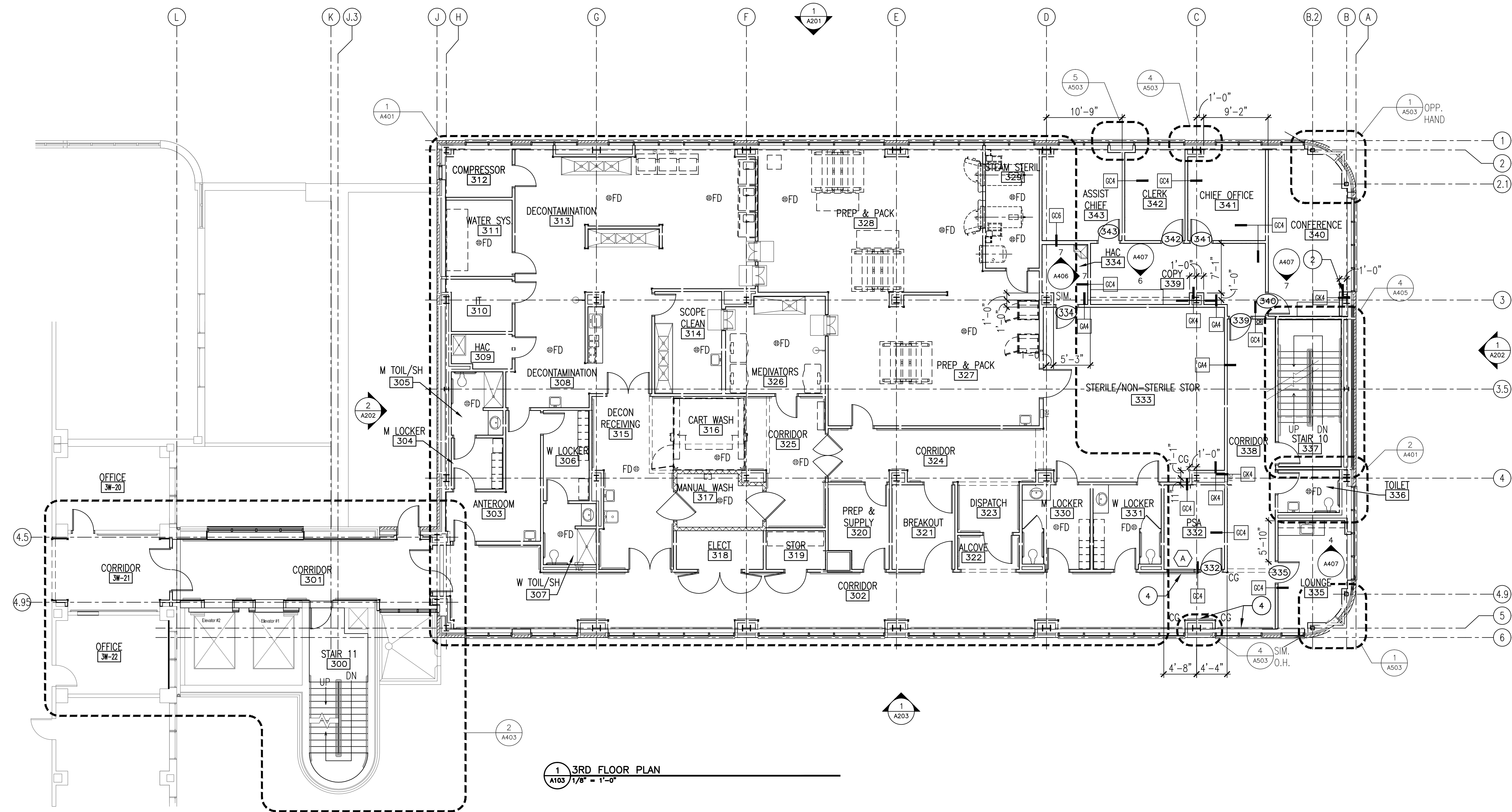


Project File: \\projects\1313 Renovate Radiology & SPS - VA Shreveport\Drawings\1313 3RD FLOOR PLAN.dwg
Plotted by: hamed
Plot Date: May 20, 2015 3:56pm
one-eighth inch = one foot

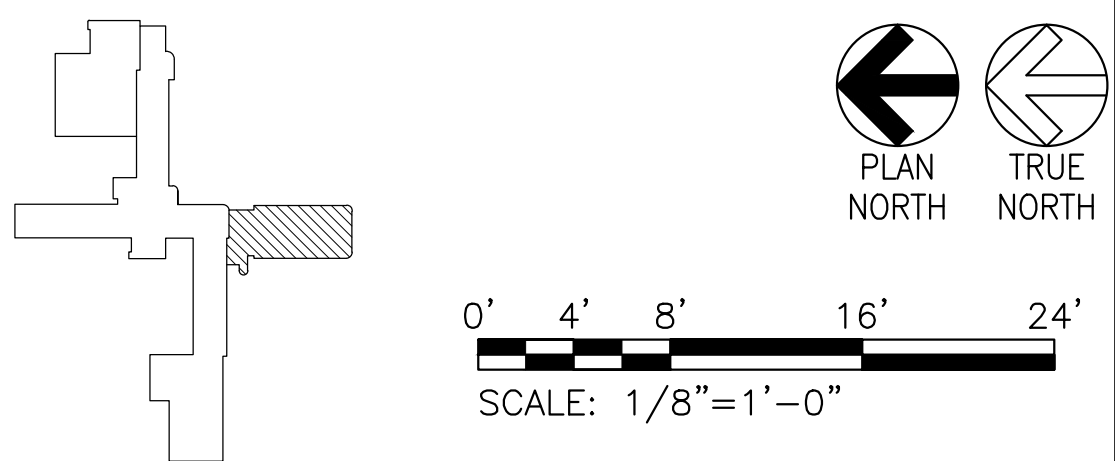
A three inches = one foot
B one and one-half inches = one foot
C one inch = one foot
D three-quarters inch = one foot
E one-half inch = one foot
F three-eighths inch = one foot
G one-quarter inch = one foot



- ### FLOOR PLAN GENERAL NOTES
- SEE PARTITION TYPES ON SHEET A501.
 - SEE WINDOW ELEVATIONS ON SHEET A601.
 - SEE DOOR SCHEDULE & ELEVATIONS ON SHEET A600.
 - GENERAL CONTRACTOR IS RESPONSIBLE FOR COORDINATION FOR ROUGH-IN AND SPACE REQUIREMENTS FOR "BASIS OF DESIGN" AND OWNER FURNISHED EQUIPMENT.

- ### FLOOR PLAN KEY NOTES
- ALIGN CENTERLINE OF PARTITION WITH CENTERLINE OF MULLION.
 - ALIGN FINISH FACE OF PARTITION WITH FACE OF WINDOW JAMB.
 - INFILL EXISTING OPENING. PROVIDE WALL FINISH AND BASE TO ALIGN WITH AND MATCH EXISTING WHERE NO NEW FINISHES ARE SPECIFIED.
 - CRASHRAIL AND HANDRAIL/WALL GUARD. SEE 11/A508.
 - NEW WALL EXPANSION JOINT AND COVER. SEE 5/A506.
 - NEW FLOOR EXPANSION JOINT AND COVER. SEE 5/A506.
 - ALIGN FINISH FACE OF NEW PARTITION WITH FINISH FACE OF EXISTING PARTITION.
 - NEW CURTAINWALL CUSTOM TO MATCH EXISTING.
 - COORDINATE EXACT LOCATION OF NEW PARTITION WITH PLUMBING OR MECHANICAL WORK. FINISH NEW PARTITION TO MATCH EXISTING.

- ### NEW WORK LEGEND
- NEW CONSTRUCTION
 - EXIST CONSTRUCTION (TO REMAIN)
 - NEW DOOR
 - EXIST DOOR (TO REMAIN)
 - PARTITION TYPE, SEE DWG A501
 - NEW WORK KEYNOTES
 - WINDOW TYPE



Revisions:		CONSULTANTS:				ARCHITECT:		590 Means Street NW, Suite 200 Atlanta, GA 30318 404.214.9774		Drawing Title: 3RD FLOOR PLAN, CORRIDOR 1S90, CANTEN STORAGE 2S01		Project Title: EXPAND RADIOLOGY AND SPS OVERTON BROOKS VAMC		Project Number: 667-083		OFFICE OF CONSTRUCTION AND FACILITIES MANAGEMENT	
Date:						Approved: Project Director						Location: SHREVEPORT, LA		Building Number: 1		Drawing Number: A103	
												Date: 04-17-2015		Checked: XX		Drawn: XX	
														Dwg. 17 of 160		VA U.S. Department of Veterans Affairs	