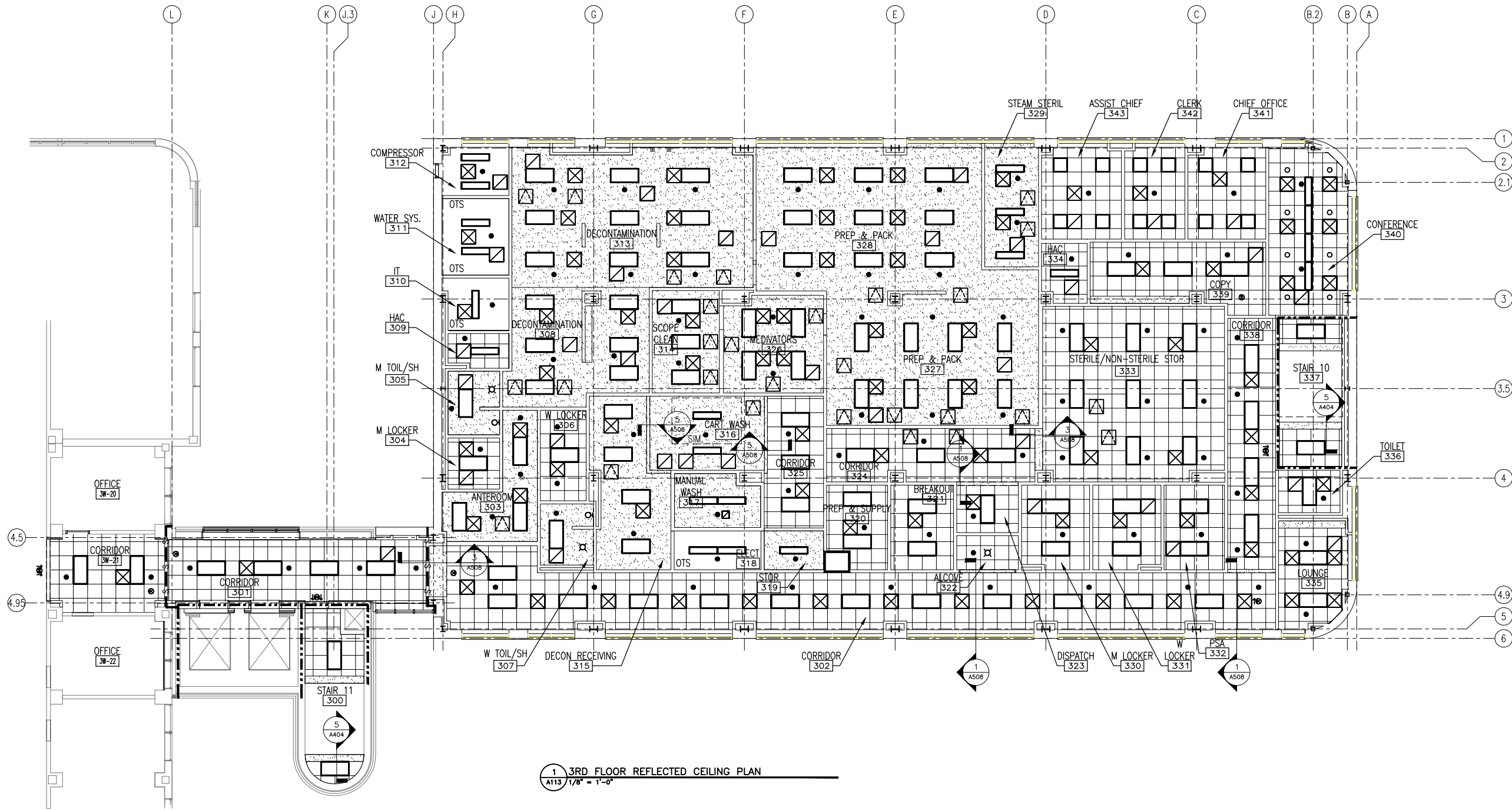


Project: File: \\Projects\\1313 Renovate Radiology & SPS VA Shreveport\\1313 Drawings\\RENOVATE RADIOLOGY & SPS - VA SHREVEPORT\\Sheets\\A113 3RD FLOOR REFLECTED CEILING PLAN.dwg
Plotted by: [Name]
Plotted Date: May 20, 2015 - 3:56pm

A three inches = one foot
B one and one-half inches = one foot
C one inch = one foot
D three-quarters inch = one foot
E one-half inch = one foot
F three-eighths inch = one foot
G one-quarter inch = one foot
H one-eighth inch = one foot

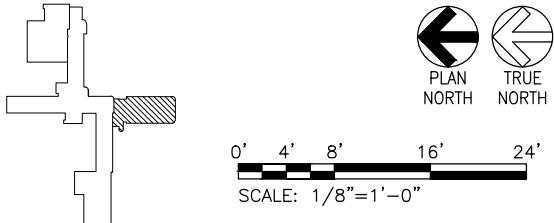


REFLECTED CEILING PLAN LEGEND

	2'-0" X 4'-0" LAY-IN LIGHT FIXTURE		2' X 2' SUPPLY / RETURN GRILLE - SEE MECHANICAL
	1'-0" X 4'-0" LIGHT FIXTURE SURFACE-MTD OR SUSPENDED		CEILING ACCESS PANEL
	2'-0" X 2'-0" LAY-IN LIGHT FIXTURE		LINEAR SLOT DIFFUSER
	RECESSED DOWN LIGHT - SEE ELECTRICAL		SPRINKLER
	CEILING MOUNTED EXIT SIGN WITH DIRECTION ARROWS		OTS - OPEN TO STRUCTURE
	2'-0" X 2'-0" ACT GRID		1-HOUR FIRE PARTITION
	NEW GYP BD CEILING/SOFFT		2-HOUR FIRE PARTITION
			1-HOUR RATED SMOKE WALL

REFLECTED CEILING PLAN NOTES

1. EXACT ACCESS PANEL LOCATIONS TO BE COORDINATED BY GENERAL CONTRACTOR WITH ACTUAL MECHANICAL OR PLUMBING INSTALLATION.



Revisions:		CONSULTANTS:		ARCHITECT: TOLAND MIZELL MOLNAR 590 Means Street NW, Suite 200 Atlanta, GA 30318 404.214.9774		Drawing Title: 3RD FLOOR REFLECTED CEILING PLAN		Project Title: EXPAND RADIOLOGY AND SPS OVERTON BROOKS VAMC		Project Number: 667-083		OFFICE OF CONSTRUCTION AND FACILITIES MANAGEMENT VA U.S. Department of Veterans Affairs	
Date:						Approved: Project Director		Location: SHREVEPORT, LA		Building Number: 1			
								Date: 04-17-2015		Checked: XX			
										Dwg. 20 of 160			