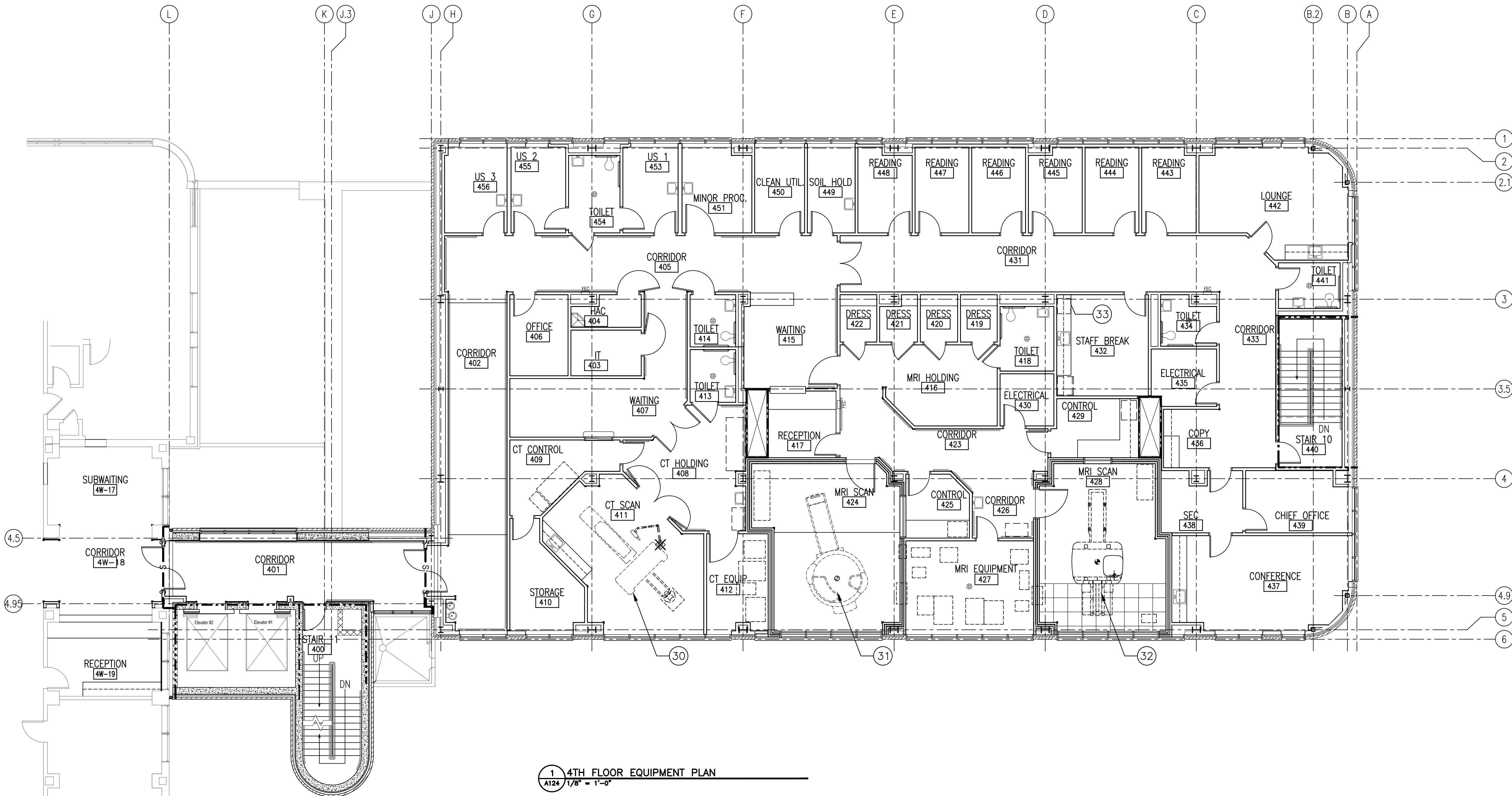


Drawing File: \\Projects\1313 Renovate Radiology & SPS VA Shreveport\3 1313 Drawings\RENOVATE RADIOLOGY & SPS - VA SHREVEPORT\Sheets\A124 4TH FLOOR EQUIPMENT PLAN.dwg
Plotted by: haneed
Plotted Date: Jul 20, 2015 - 3:45pm

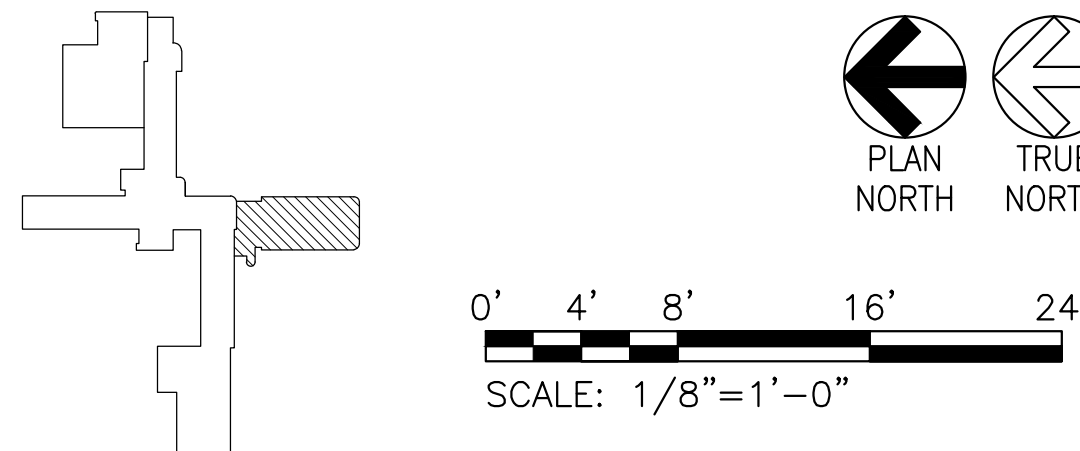
A three inches = one foot
B one and one-half inches = one foot
C one inch = one foot
D three-quarters inch = one foot
E one-half inch = one foot
F three-eighths inch = one foot
G one-quarter inch = one foot
H one-eighth inch = one foot



EQUIPMENT SCHEDULE

MARK	DESCRIPTION	QTY.	FURNISHED		INSTALLED		PRODUCT (BASIS OF DESIGN)	NOTES
			GC	VA	GC	VA		
1	DENTAL LUBRICATOR	4		X		X	ASSISTINA 301 PLUS/NSK CARE 3 PLUS	
2	WATER PURIFICATION SYSTEM	1	X		X		AMERIWATER R03 MODEL #00HCS-2055	
3	DETERGENT DISPENSING SYSTEM	1		X		X		
4	ULTRASONIC CLEANER (SINGLE)	1		X		X	CAVIWAVE 20-W	
5	ULTRASONIC CLEANER (DOUBLE)	1		X		X	CAVIWAVE 20-WRD	
6	WASHER/DISINFECTOR	2+1 FUT		X		X	STERIS RELIANCE HAMO VISION	
7	PASS THROUGH	4	X		X		AAMSCO	
8	CART WASH	1		X	X	X	STERIS VISION 1327	
9	STEAM GUN	1	X		X		GETTINGE 7510	
10	ENDOSCOPE REPROCESSOR	3		X	X	X	MEDIVATOR 2.0	
11	ENDOSCOPE DRYING CABINET	1		X		X		
12	DRYING CABINET	1		X		X		
13	LOW TEMPERATURE STERILIZER	2		X		X	AAMSCO V-PRO MAX	
14	STEAM STERILIZER (SMALL)	1		X		X	AAMSCO 400 SERIES	
15	STEAM STERILIZER (LARGE)	2		X		X	AAMSCO EVOLUTION	
16	PREP AND PACK TABLE	3		X		X		
17	LOCKER	48	X		X			1
18	LOCKER ROOM BENCH	4	X		X			2
30	CT SCANNER	1		X		X	TOSHIBA AQUILION	
31	MRI-OPEN	1		X		X	HITACHI OASIS MARK II	
32	MRI-CLOSED	1		X		X	HITACHI ECHELON OVAL	
33	ICE MACHINE/DISPENSER	1		X		X	SCOTSMAN MDT5N25A-1J	

GENERAL EQUIPMENT NOTES:
1 ARCHITECTURAL AND ENGINEERING DOCUMENTS ARE BASED ON EQUIPMENT INFORMATION PROVIDED BY THE VAMC DURING DESIGN. THE BASIS OF DESIGN MODELS ARE LISTED ABOVE. PRIOR TO ROUGH-IN OF ANY VA-FURNISHED EQUIPMENT, CONTRACTOR SHALL VERIFY MAKE, MODEL AND ALL M/E/P, STRUCTURAL AND OTHER REQUIREMENTS OF EQUIPMENT AND COORDINATE WITH CONSTRUCTION, UTILITIES OR ROUGH-IN. REFER TO SPEC SECTION 11 70 00 "EQUIPMENT" FOR ADDITIONAL INFORMATION.



FINAL SUBMITTAL

Revisions:		Date		CONSULTANTS:				ARCHITECT:		590 Means Street NW, Suite 200 Atlanta, GA 30318 404.214.9774		Drawing Title:		4TH FLOOR EQUIPMENT PLAN		Project Title:		EXPAND RADIOLOGY AND SPS OVERTON BROOKS VAMC		Project Number:		667-083		Building Number:		1		Drawing Number:		A124		Dwg. 23 of 160		Date:		07-20-2015		Checked:		XX		Drawn:		XX		Approved: Project Director		Location:		SHREVEPORT, LA		Office of Construction and Facilities Management		VA		U.S. Department of Veterans Affairs	
------------	--	------	--	--------------	--	--	--	------------	--	---	--	----------------	--	--------------------------	--	----------------	--	---	--	-----------------	--	---------	--	------------------	--	---	--	-----------------	--	------	--	----------------	--	-------	--	------------	--	----------	--	----	--	--------	--	----	--	----------------------------	--	-----------	--	----------------	--	--	--	----	--	-------------------------------------	--