

Drawing File: \\Projects\1313 Renovate Radiology & SPS VA Shreveport\3 1313 Drawings\RENOVATE RADIOLOGY & SPS - VA SHREVEPORT\Sheets\A133 3RD FLOOR FURNITURE PLAN (FOR INFORMATION ONLY).dwg
Plotted by: hamed
Plotted Date: May 20, 2015 3:57pm

A
three inches = one foot

B
one and one-half inches = one foot

C
one inch = one foot

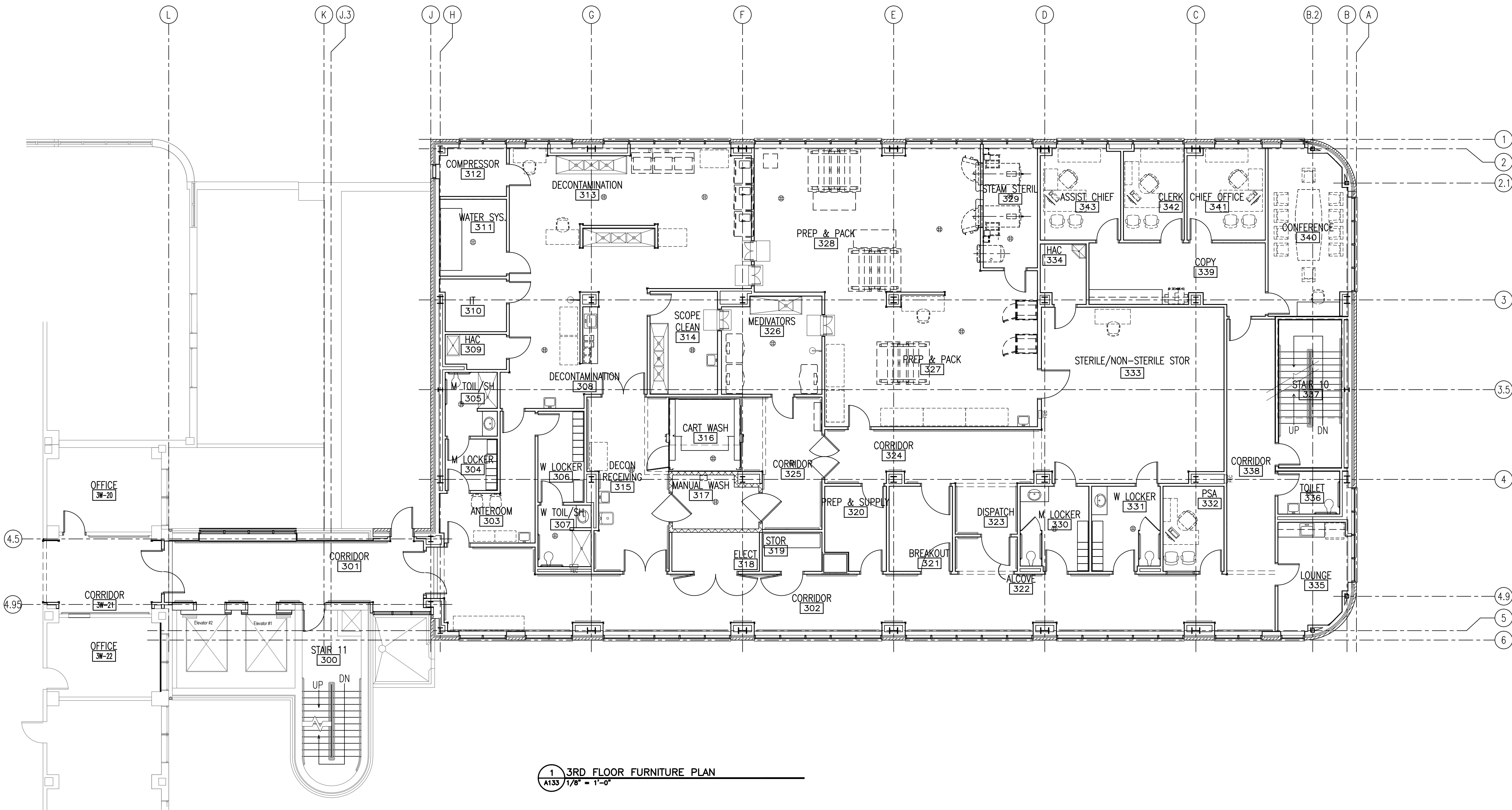
D
three-quarters inch = one foot

E
one-half inch = one foot

F
three-eighths inch = one foot

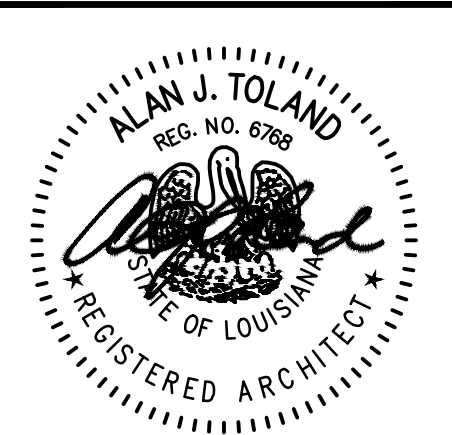
G
one-quarter inch = one foot

H
one-eighth inch = one foot



1 3RD FLOOR FURNITURE PLAN
A133 1/8" = 1'-0"

CONSULTANTS:



ARCHITECT:



590 Means Street NW, Suite 200
Atlanta, GA 30318
404.214.9774

Drawing Title:
3RD FLOOR FURNITURE PLAN (FOR
INFORMATION ONLY)

Approved: Project Director

Project Title:
EXPAND RADIOLOGY AND SPS
OVERTON BROOKS VAMC

Location:
SHREVEPORT, LA

Date:
04-17-2015

Checked:
XX

Drawn:
XX

Project Number:
667-083

Building Number:
1

Drawing Number:
A133

Dwg. 24 of 160

FINAL SUBMITTAL

OFFICE OF
CONSTRUCTION
AND FACILITIES
MANAGEMENT

