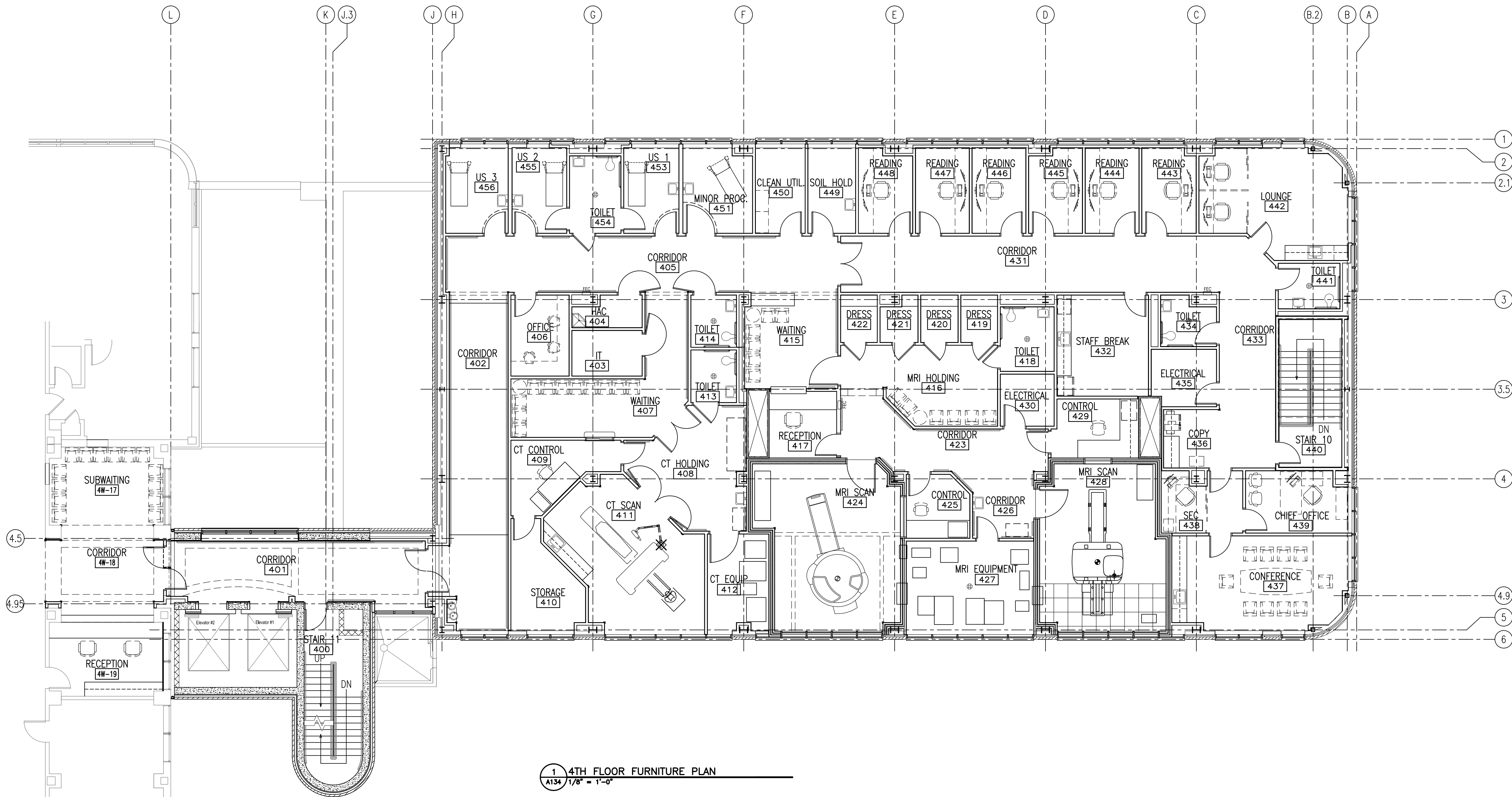


Drawing File: \\Projects\1313 Renovate Radiology & SPS VA Shreveport\3 1313 Drawings\RENOVATE RADIOLOGY & SPS - VA SHREVEPORT\Sheets\A134 4TH FLOOR FURNITURE PLAN (FOR INFORMATION ONLY).dwg  
Plotted by: haneed  
Plotted Date: May 20, 2015 3:57pm

A three inches = one foot  
B one and one-half inches = one foot  
C one inch = one foot  
D three-quarters inch = one foot  
E one-half inch = one foot  
F three-eighths inch = one foot  
G one-quarter inch = one foot  
H one-eighth inch = one foot



1 4TH FLOOR FURNITURE PLAN  
A134 1/8" = 1'-0"

Revisions:	Date

CONSULTANTS:



ARCHITECT:

**TOLAND MIZELL MOLNAR**

590 Means Street NW, Suite 200  
Atlanta, GA 30318  
404.214.9774

Drawing Title: 4TH FLOOR FURNITURE PLAN (FOR INFORMATION ONLY)
Approved: Project Director

Project Title: EXPAND RADIOLOGY AND SPS OVERTON BROOKS VAMC
Location: SHREVEPORT, LA
Date: 04-17-2015
Checked: XX
Drawn: XX

Project Number: 667-083
Building Number: 1
Drawing Number: A134
Dwg. 25 of 160

FINAL SUBMITTAL

OFFICE OF  
CONSTRUCTION  
AND FACILITIES  
MANAGEMENT

VA U.S. Department  
of Veterans Affairs