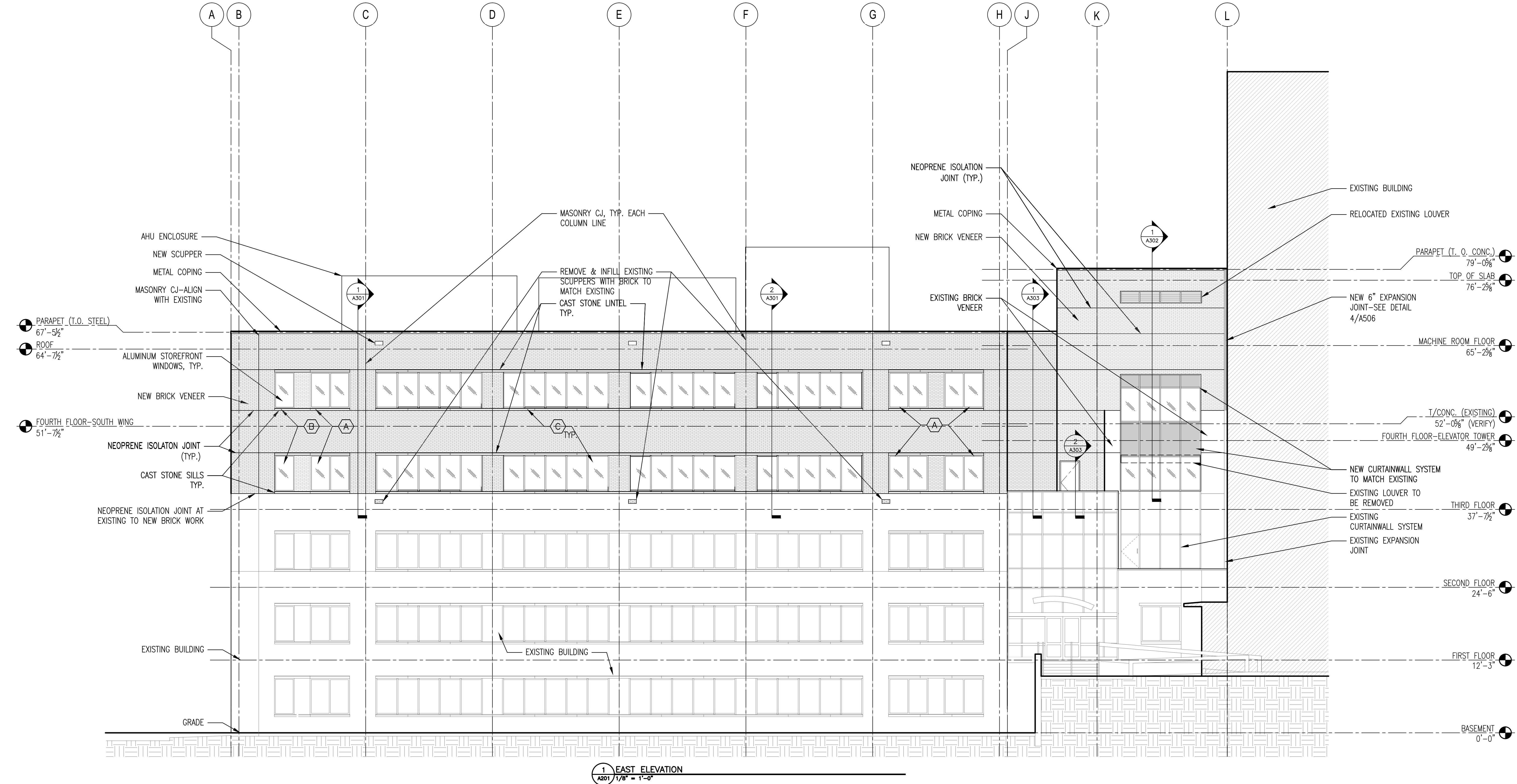


Drawing File: \\Projects\1313 Renovate Radiology & SPS VA Shreveport\3 1313 Drawings\RENOVATE RADIOLOGY & SPS - VA SHREVEPORT\Sheets\A201 EAST ELEVATION.dwg
Plotted Date: May 20, 2015 - 3:57pm
G

one-eighth inch = one foot
one-quarter inch = one foot
three-eighths inch = one foot
one-half inch = one foot
three-quarters inch = one foot
one inch = one foot
one and one-half inches = one foot
two inches = one foot
three inches = one foot

1 2 3 4 5 6 7 8 9



1 EAST ELEVATION
A201 1/8" = 1'-0"

0' 4' 8' 16' 24'
SCALE: 1/8" = 1'-0"

		CONSULTANTS:			ARCHITECT:  590 Means Street NW, Suite 200 Atlanta, GA 30318 404.214.9774	Drawing Title: EAST ELEVATION		Project Title: EXPAND RADIOLOGY AND SPS OVERTON BROOKS VAMC		Project Number: 667-083		OFFICE OF CONSTRUCTION AND FACILITIES MANAGEMENT  U.S. Department of Veterans Affairs	
			Approved: Project Director			Location: SHREVEPORT, LA		Building Number: 1		Drawing Number: A201			
Revisions:			Date:			Date: 04-17-2015		Checked: XX		Drawn: XX			Dwg. 26 of 160

FINAL SUBMITTAL

VA FORM 08-6231A, MAR 1984 1 2 3 4 5 6 7 8 9