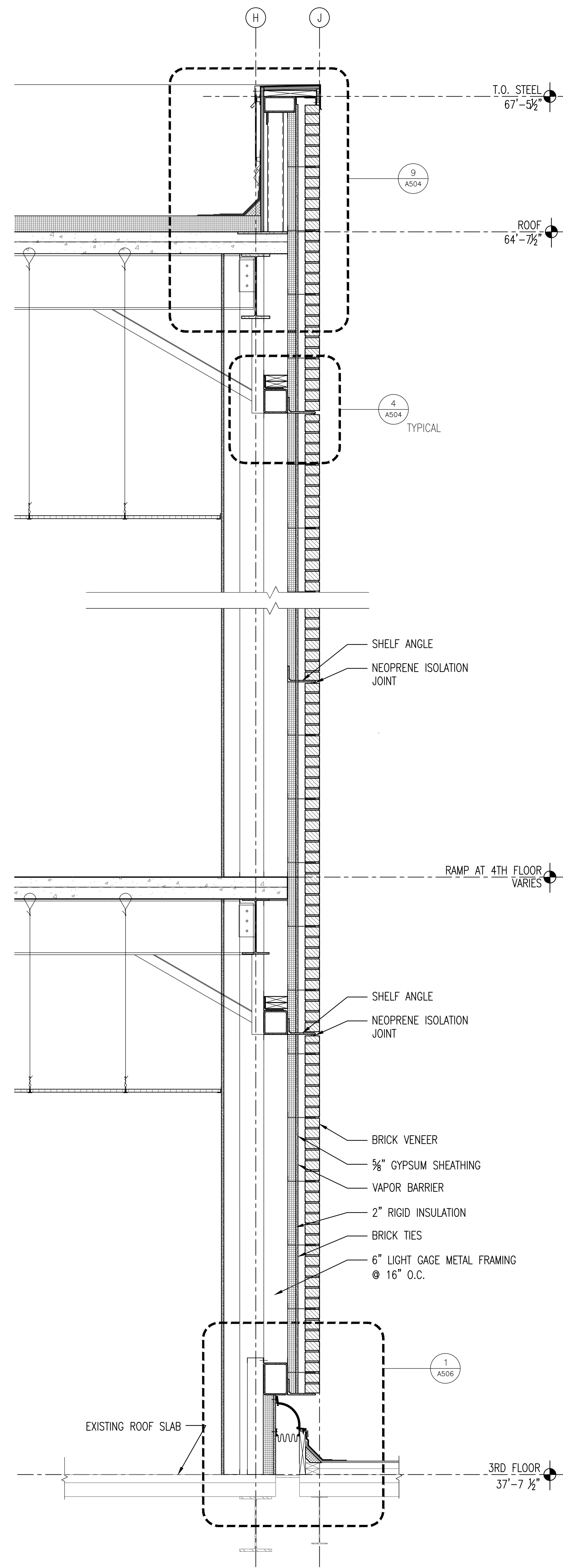
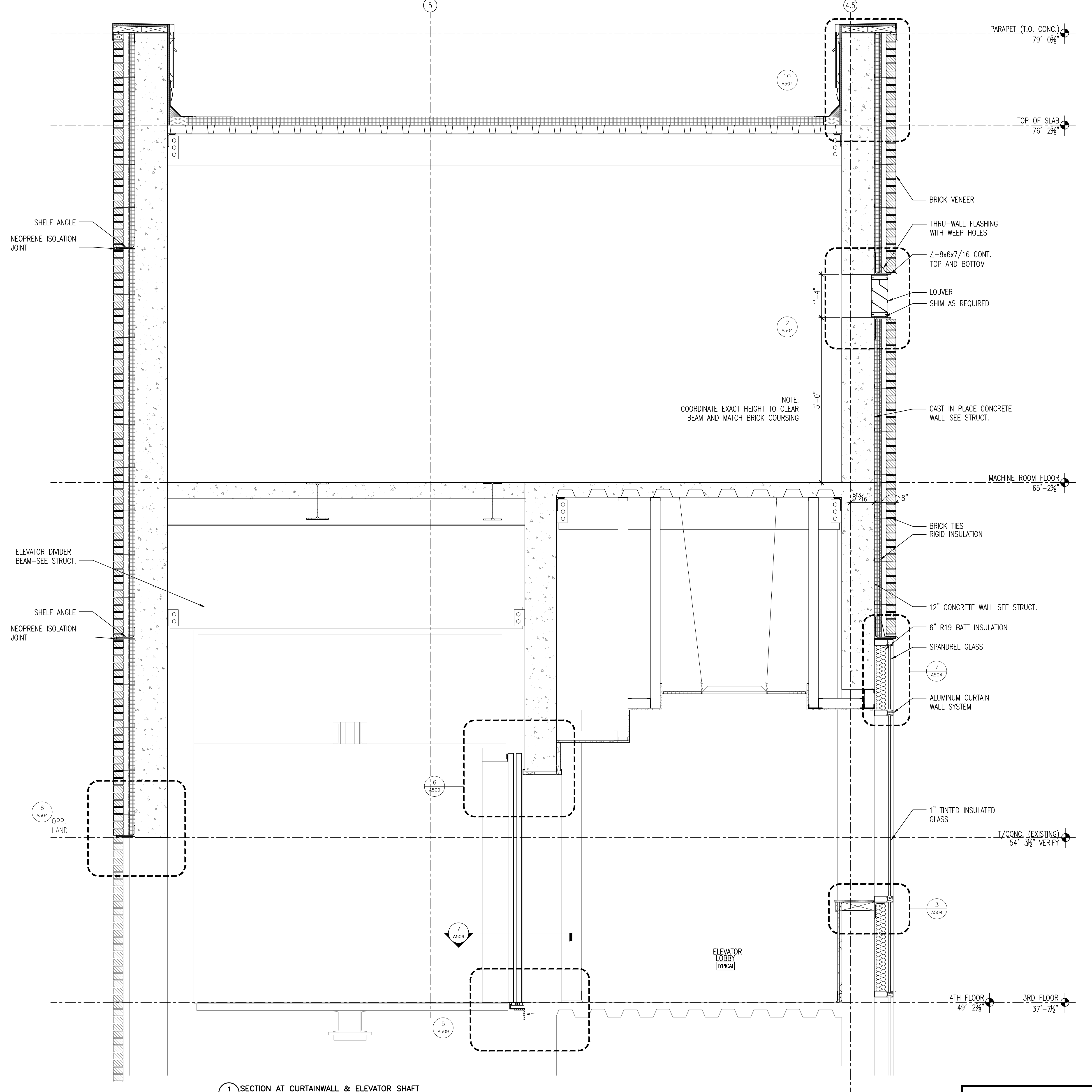


Drawing File: \\Projects\1313 Renovate Radiology & SPS VA Shreveport\3 1313 Drawings\RENOVATE RADIOLOGY & SPS - VA SHREVEPORT\Sheets\A302 WALL SECTIONS.dwg
Plotted by: hamed
Plotted Date: May 20, 2015 3:57pm

A three inches = one foot
B one and one-half inches = one foot
C one inch = one foot
D three-quarters inch = one foot
E one-half inch = one foot
F three-eighths inch = one foot
G one-quarter inch = one foot
H one-eighth inch = one foot



2 WALL SECTION - NORTH
A302 3/4" = 1'-0"



1 SECTION AT CURTAINWALL & ELEVATOR SHAFT
A302 3/4" = 1'-0"

Revisions:		Date:		CONSULTANTS:				ARCHITECT: TOLAND MIZELL MOLNAR 590 Means Street NW, Suite 200 Atlanta, GA 30318 404.214.9774		Drawing Title: WALL SECTIONS Approved: Project Director		Project Title: EXPAND RADIOLOGY AND SPS OVERTON BROOKS VAMC Location: SHREVEPORT, LA Date: 04-17-2015 Checked: XX Drawn: XX		Project Number: 667-083 Building Number: 1 Drawing Number: A302 Dwg. 30 of 160		FINAL SUBMITTAL OFFICE OF CONSTRUCTION AND FACILITIES MANAGEMENT U.S. Department of Veterans Affairs	
------------	--	-------	--	--------------	--	--	--	--	--	--	--	--	--	---	--	--	--