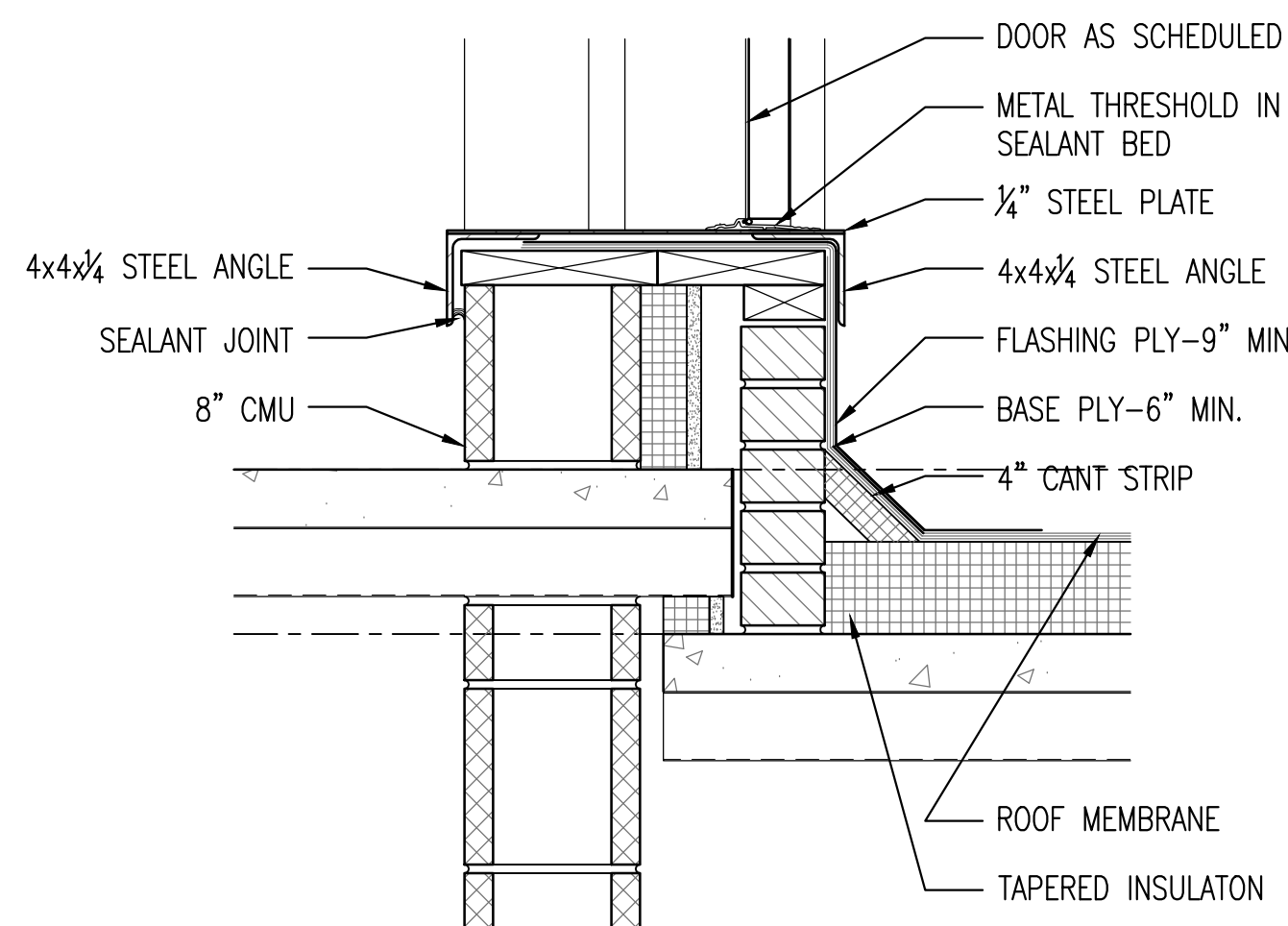
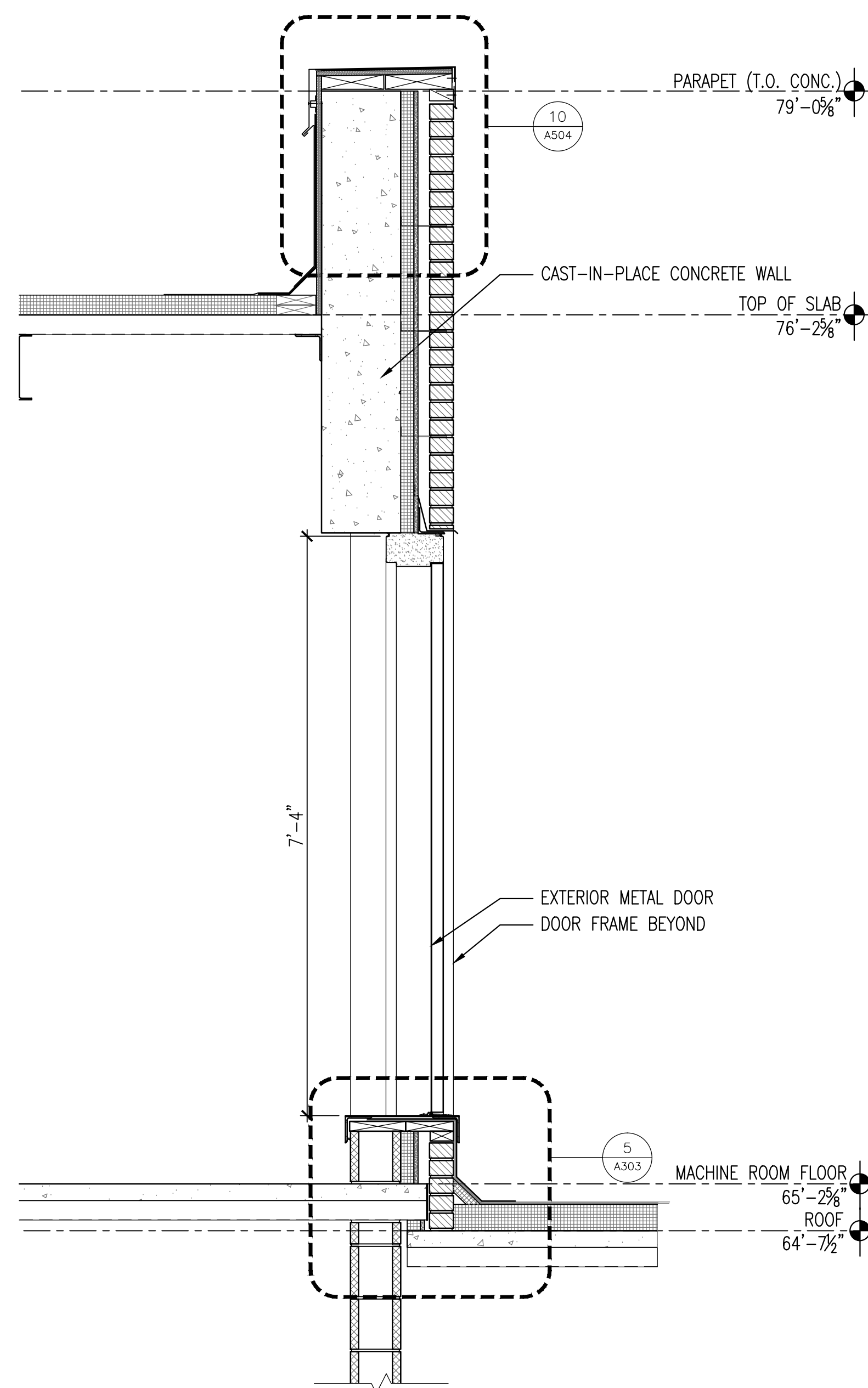


Drawing File: \\Projects\1313 Renovation Radiology & SPS VA Shreveport\3 1313 Drawings\RENOVATE RADIOLOGY & SPS - VA SHREVEPORT\Sheets\A303 WALL SECTIONS AND DETAILS.dwg  
Plotted by: hamed  
Plotted Date: May 20, 2015 3:58pm  
one-eighth inch = one foot

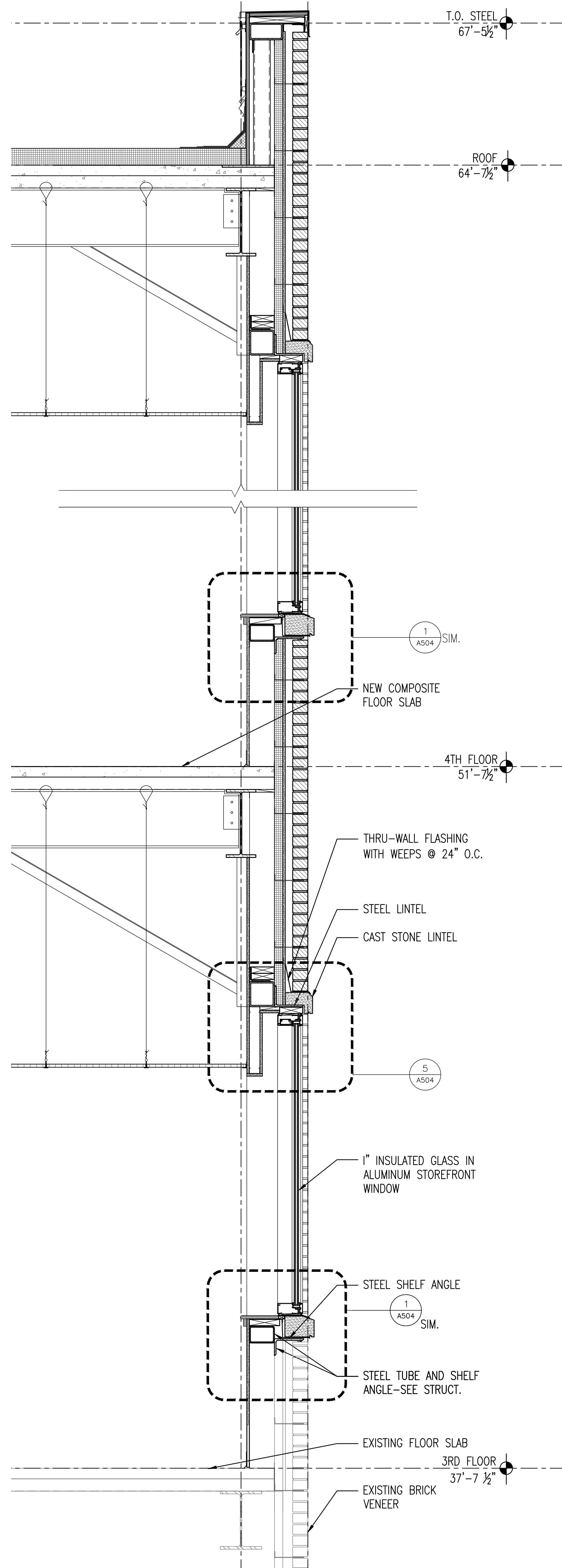
A three inches = one foot  
B one and one-half inches = one foot  
C one inch = one foot  
D three-quarters inch = one foot  
E one-half inch = one foot  
F three-eighths inch = one foot  
G one-quarter inch = one foot  
H one-eighth inch = one foot



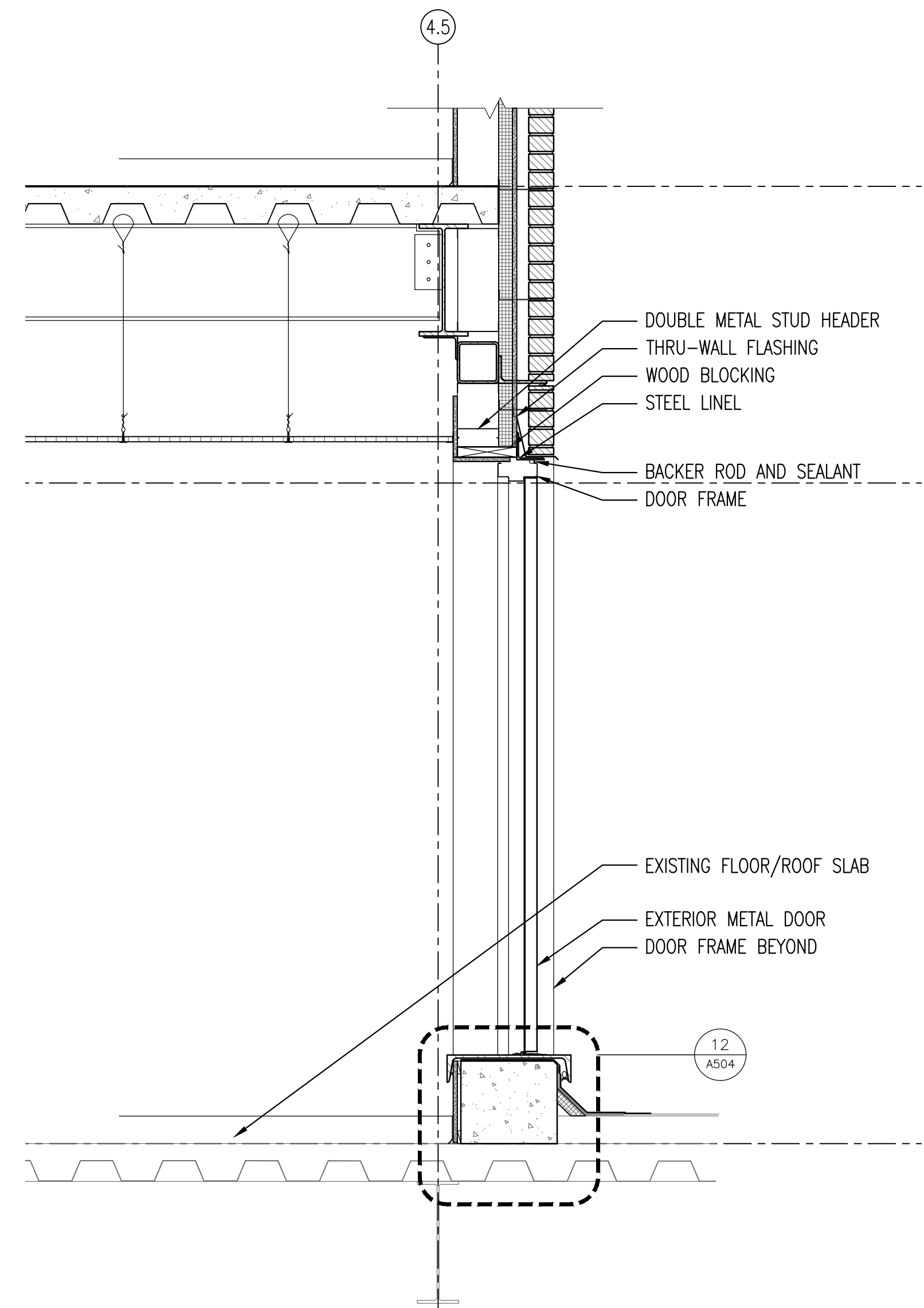
5 SILL DETAIL-DOOR 501  
A303 1/12" = 1'-0"



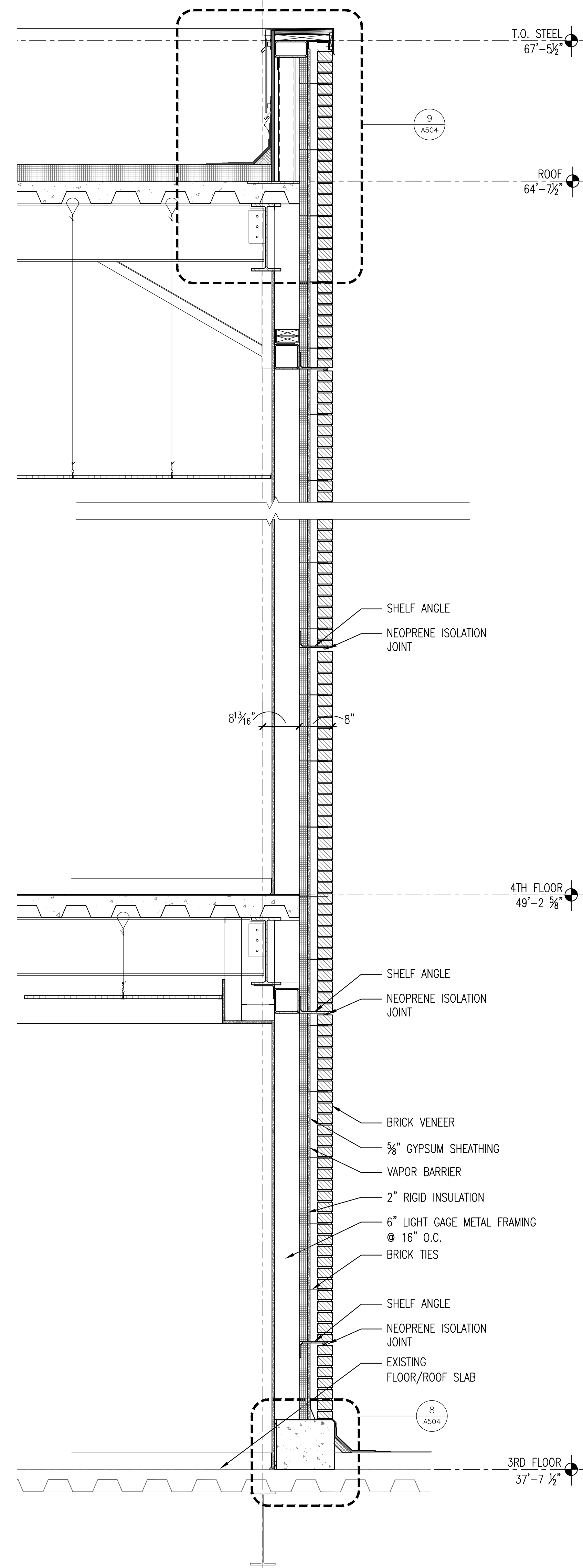
4 SECTION AT DOOR 501  
A303 3/4" = 1'-0"



3 TYP. SOUTH WALL SECTION  
A303 3/4" = 1'-0"



2 SECTION AT DOOR 301B  
A303 3/4" = 1'-0"



1 WALL SECTION @ EXISTING ROOF  
A303 3/4" = 1'-0"

Revisions:		Date:		CONSULTANTS:				ARCHITECT:  590 Means Street NW, Suite 200 Atlanta, GA 30318 404.214.9774		Drawing Title: WALL SECTIONS AND DETAILS Approved: Project Director		Project Title: EXPAND RADIOLOGY AND SPS OVERTON BROOKS VAMC Location: SHREVEPORT, LA Date: 04-17-2015 Checked: XX Drawn: XX		Project Number: 667-083 Building Number: 1 Drawing Number: A303 Dwg. 31 of 160		FINAL SUBMITTAL OFFICE OF CONSTRUCTION AND FACILITIES MANAGEMENT  U.S. Department of Veterans Affairs	
------------	--	-------	--	--------------	--	---	--	--	--	---	--	---	--	--	--	--	--