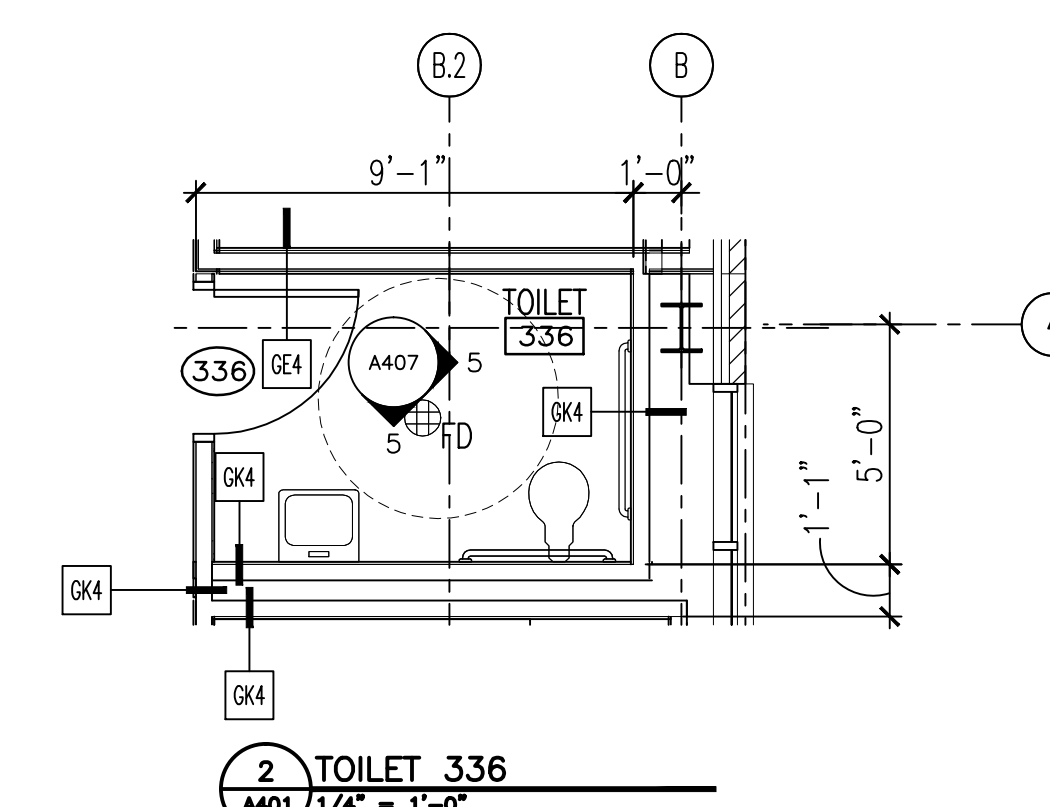


- (1) ALIGN CENTERLINE OF PARTITION WITH CENTERLINE OF MULLION.
- (2) ALIGN FINISH FACE OF PARTITION WITH FACE OF WINDOW JAMB.
- (3) INFILL EXISTING OPENING. PROVIDE WALL FINISH AND BASE TO ALIGN WITH AND MATCH EXISTING WHERE NO NEW FINISHES ARE SPECIFIED.
- (4) CRASHRAIL AND HANDRAIL/WALL GUARD. SEE 11/A508.
- (5) NEW WALL EXPANSION JOINT AND COVER. SEE 6/A506.
- (6) NEW FLOOR EXPANSION JOINT AND COVER. SEE 5/A506.
- (7) ALIGN FINISH FACE OF NEW PARTITION WITH FINISH FACE OF EXISTING PARTITION.
- (8) NEW CURTAINWALL CUSTOM TO MATCH EXISTING.
- (9) COORDINATE EXACT LOCATION OF NEW PARTITION WITH PLUMBING OR MECHANICAL WORK. FINISH NEW PARTITION TO MATCH EXISTING.

ABREV.	DESCRIPTION	PRODUCT (BASIS OF DESIGN)	NOTES
A	MIRROR-24" X 36"		
B	MIRROR-24" X 60"		
C	24" GRAIP BAR		
D	30" GRAIP BAR		
E	36" GRAIP BAR		
F	42" GRAIP BAR		
G	SANITARY NAPKIN DISPOSAL	GOBRICK B-270	
H	MOP BROOM HOLDER	GOBRICK B-239	
I	THERMAL PIPE SHIELD		
J	BABY CHANGING STATION	KOALA KARE KB200	
K	TOLLET PAPER DISPENSER	GA PACIFIC COMPACT QUAD 56744	1
L	PAPER TOWEL DISPENSER	GA PACIFIC EMOTION 59462	1
M	SANITARY NAPKIN DISPENSER	HOSPITAL SPECIFIC CO. DUAL 1/MT1	1
N	SOAP DISPENSER	BUCKEYE JANITORIAL BE99012058	1
O	LOTION/SOAP DISPENSER	STERIS 4D4005	1

KEY NOTES:
1 PROVIDED BY VAMC



OFFICE OF
CONSTRUCTION
AND FACILITIES
MANAGEMENT

VA  U.S. Department
of Veterans Affairs

		CONSULTANTS:
Revisions:	Date	



TOLAND
MIZELL
MOLNAR

Drawing Title:
SPS PLAN ENLARGEMENT, TOILET
336

Approved: Project Director

Project Title:
EXPAND RADIOLOGY AND SPS
OVERTON BROOKS VAMC

Location:	SHREVEPORT, LA
-----------	----------------

Date: 04-17-2015

Checked:	YY
----------	----

Drawn:	YY
--------	----

Project Number:	667-083
-----------------	---------

Building Number:
1

Drawing Number:	
-----------------	--

A401