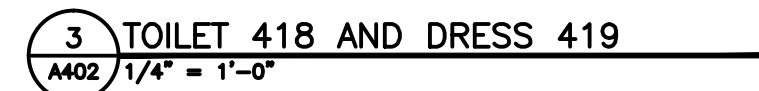
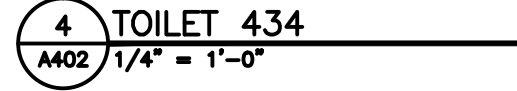
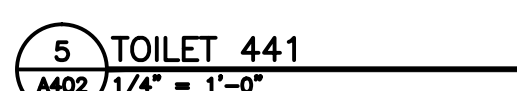
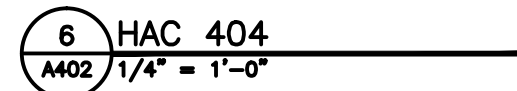


one-eighth inch = one foot

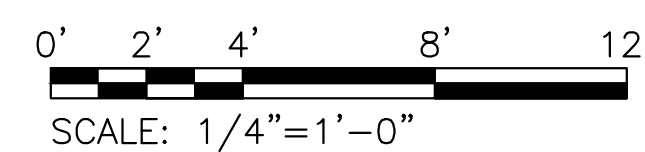


GENERAL NOTES:
ALL LISTED TOILET ACCESSORIES TO BE INSTALLED BY CONTRACTOR
REFER TO SHEET G003 FOR TYPICAL MOUNTING HEIGHTS

KEY NOTES:
1 PROVIDED BY VAMC

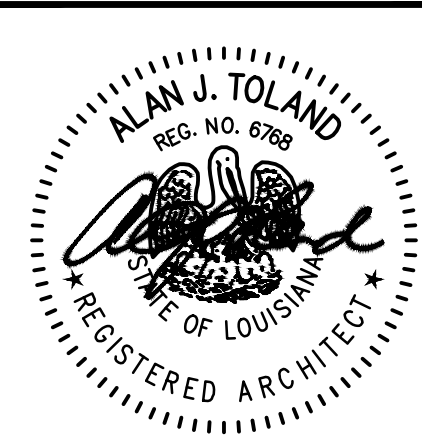
1. SEE PARTITION TYPES ON SHEET A501.
2. SEE WINDOW ELEVATIONS ON SHEET A601.
3. SEE DOOR SCHEDULE & ELEVATIONS ON SHEET A600.
4. GENERAL CONTRACTOR IS RESPONSIBLE FOR COORDINATION FOR ROUGH-IN AND SPACE REQUIREMENTS FOR "BASIS OF DESIGN" AND OWNER FURNISHED EQUIPMENT.

- ① ALIGN CENTERLINE OF PARTITION WITH CENTERLINE OF MULLION.
- ② ALIGN FINISH FACE OF PARTITION WITH FACE OF WINDOW JAMB.
- ③ INFILL EXISTING OPENING. PROVIDE WALL FINISH AND BASE TO ALIGN WITH AND MATCH EXISTING WHERE NO NEW FINISHES ARE SPECIFIED.
- ④ CRASHRAIL AND HANDRAIL/WALL GUARD. SEE 11/A508.
- ⑤ NEW WALL EXPANSION JOINT AND COVER. SEE 6/A506.
- ⑥ NEW FLOOR EXPANSION JOINT AND COVER. SEE 5/A506.
- ⑦ ALIGN FINISH FACE OF NEW PARTITION WITH FINISH FACE OF EXISTING PARTITION.
- ⑧ NEW CURTAINWALL CUSTOM TO MATCH EXISTING.
- ⑨ COORDINATE EXACT LOCATION OF NEW PARTITION WITH PLUMBING OR MECHANICAL WORK. FINISH NEW PARTITION TO MATCH EXISTING.



FINAL SUBMITTAL

CONSULTANTS:



ARCHITECT:



590 Means Street NW, Suite 200
Atlanta, GA 30318
404.214.9774

Drawing Title:
IMAGING PLAN ENLARGEMENT,
TOILET PLAN ENLARGEMENTS

Approved: Project Director

Project Title: EXPAND RADIOLOGY AND S
OVERTON BROOKS VAMC

Location: OLBREY/PORT LA

Date:

Checked:

Drawn:

Project Number	667-083
----------------	---------

Building Number

Drawing Number

A40

OFFICE OF
CONSTRUCTION
AND FACILITIES
MANAGEMENT

