

Drawing File: \\Projects\1313 Renovate Radiology & SPS - VA Shreveport\3 1313 Drawings\Renovate Radiology & SPS - VA Shreveport\Sheets\A406 INTERIOR ELEVATIONS-THIRD FLOOR.dwg  
Plotted Date: May 20, 2015 - 3:59pm  
G  
one-eighth inch = one foot

A  
three inches = one foot

B  
one and one-half inches = one foot

C  
one inch = one foot

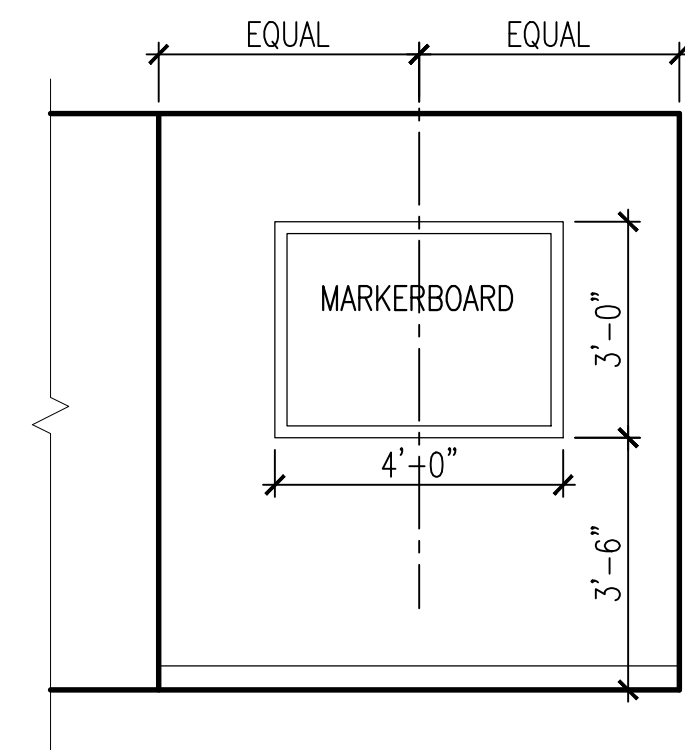
D  
three-quarters inch = one foot

E  
one-half inch = one foot

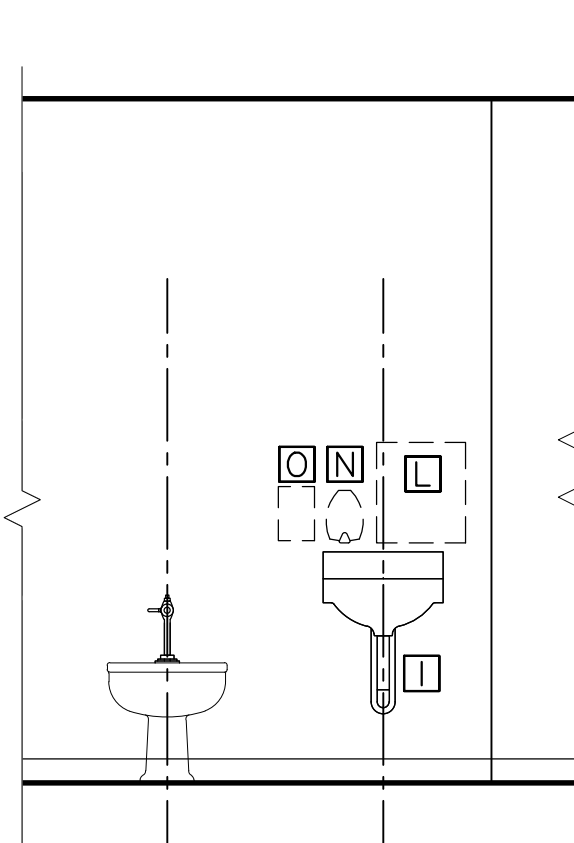
F  
three-eighths inch = one foot

F  
one-quarter inch = one foot

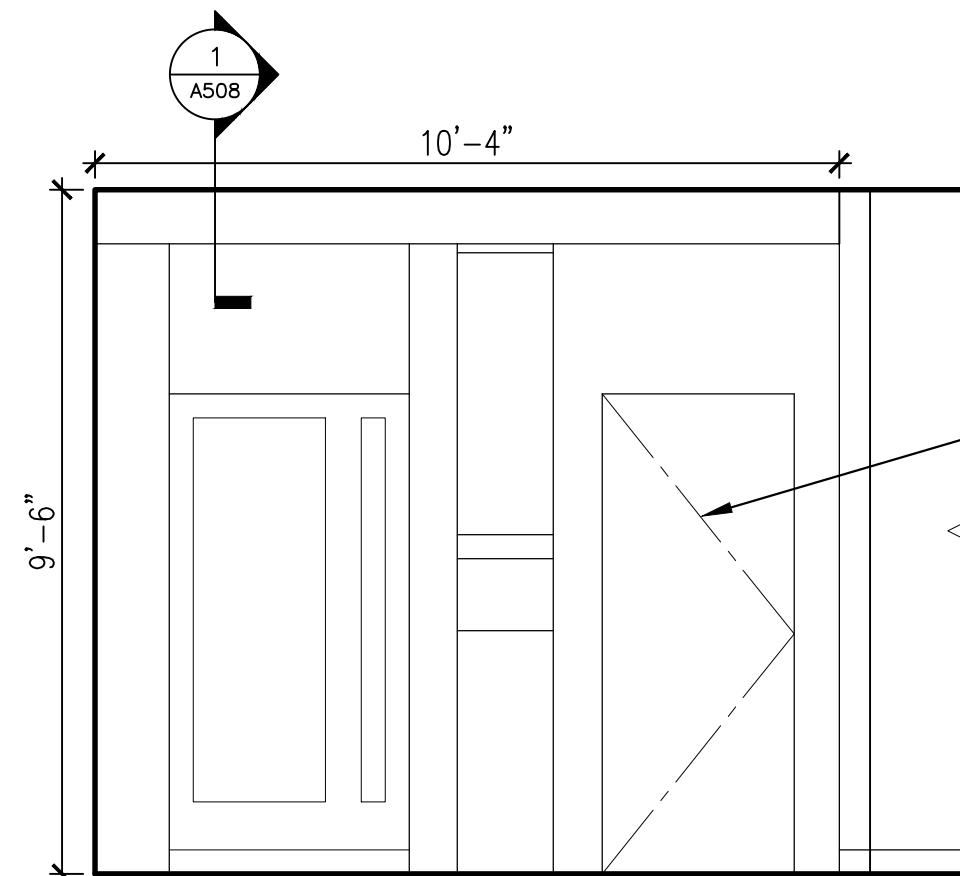
G  
one-eighth inch = one foot



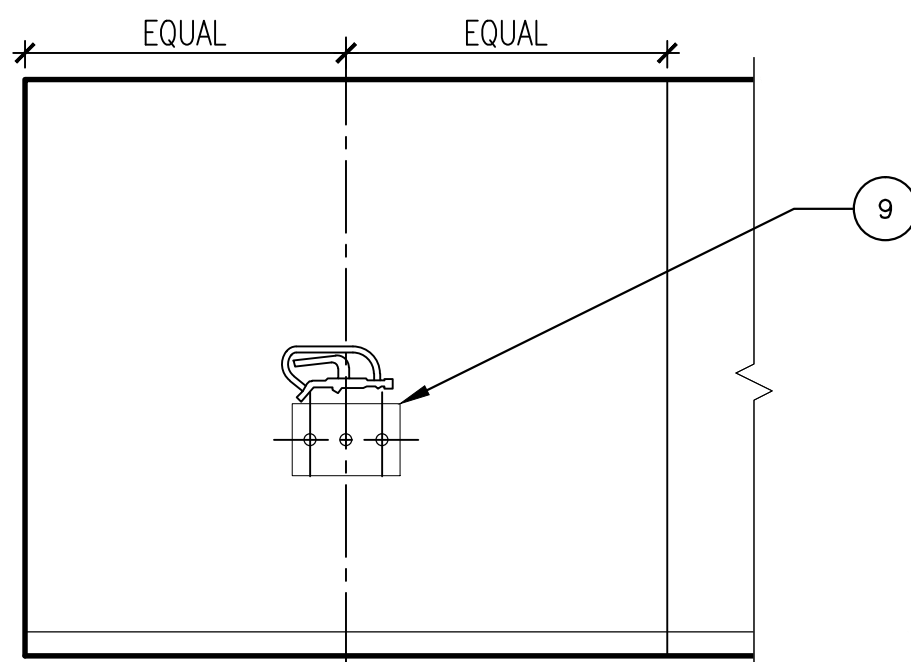
12 DISPATCH 323  
A406 3/8" = 1'-0"



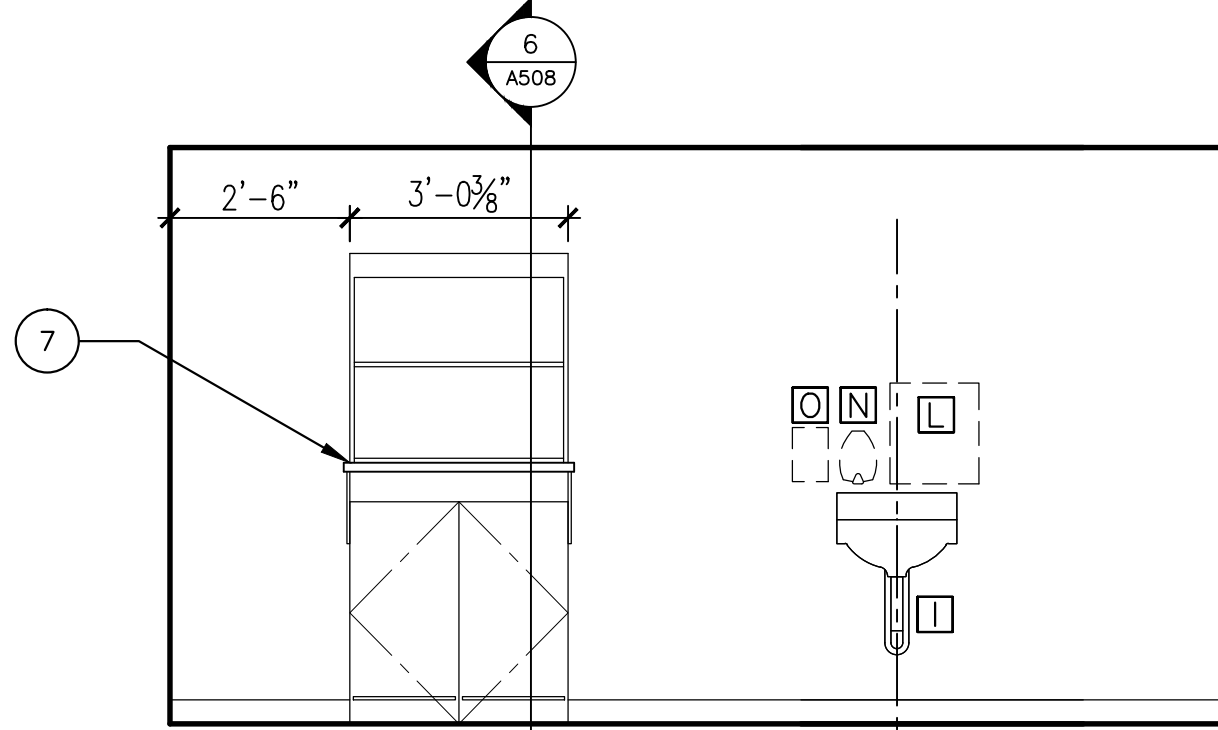
11 DECON RECEIVING 315  
A406 3/8" = 1'-0"



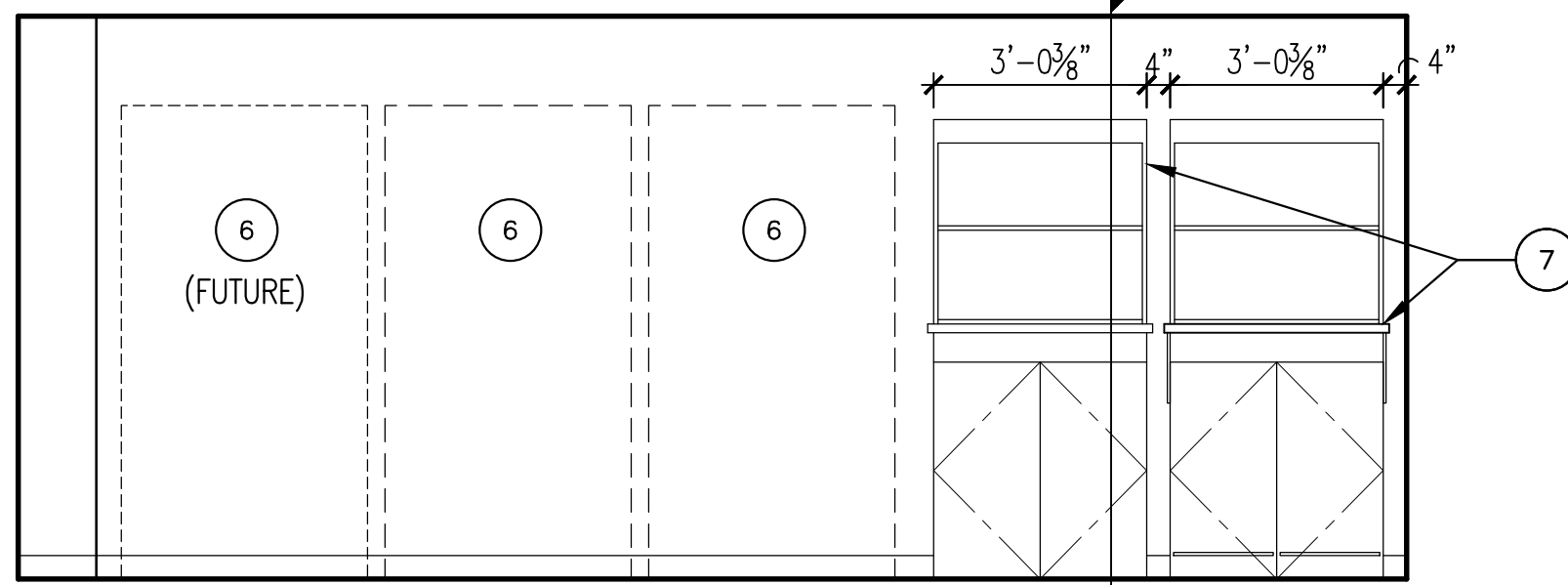
8 DECONTAMINATION 313  
A406 3/8" = 1'-0"



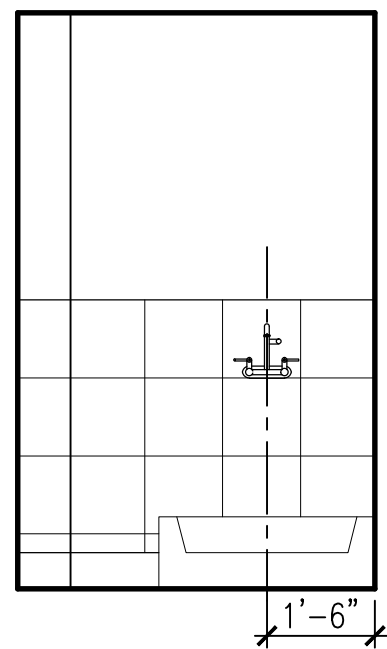
10 EQUIP. WASH 317  
A406 3/8" = 1'-0"



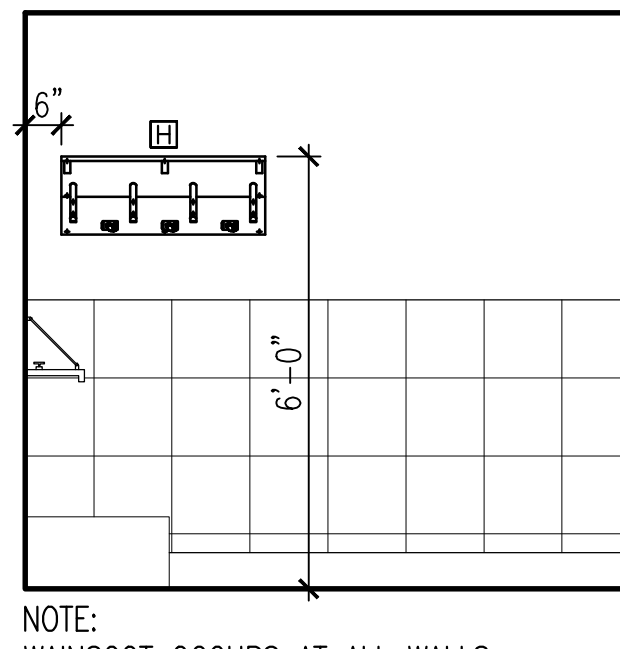
9 SCOPE CLEAN 314  
A406 3/8" = 1'-0"



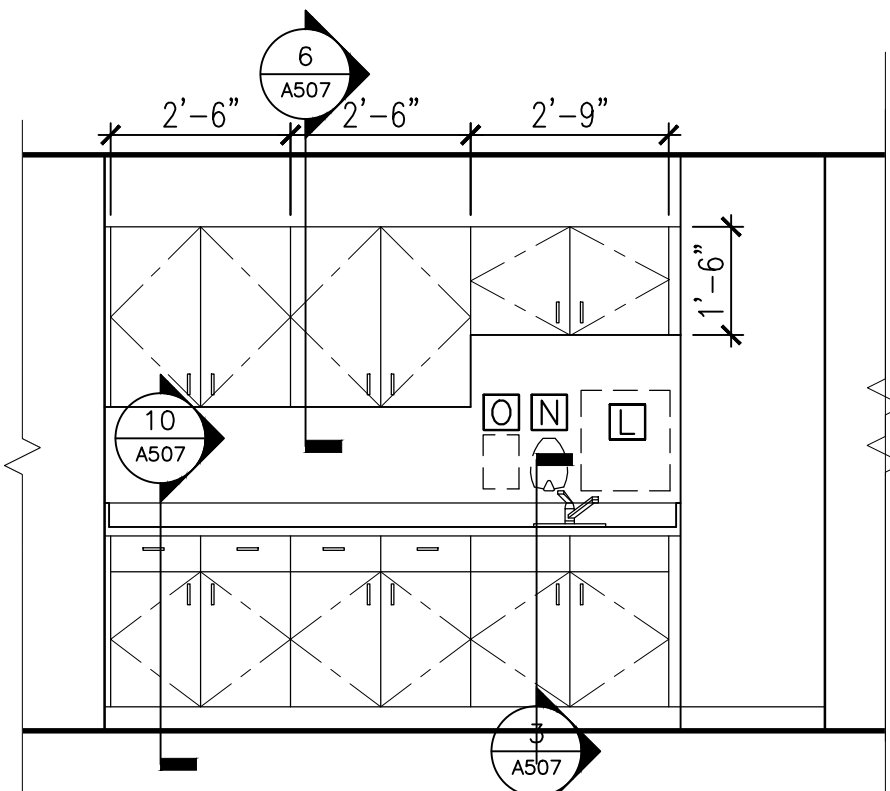
8 DECONTAMINATION 313  
A406 3/8" = 1'-0"



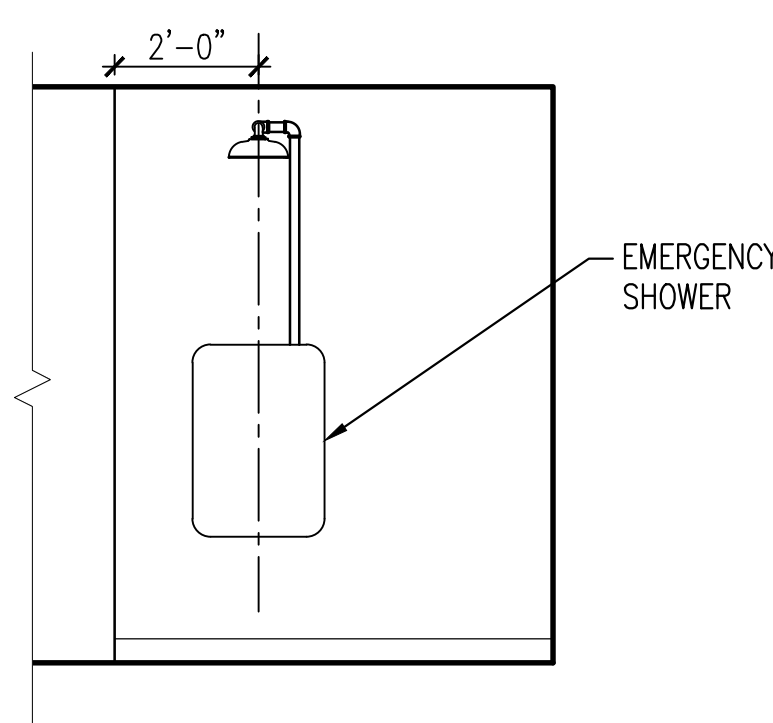
7 HAC 309 (334 & 404 SIM.)  
A406 3/8" = 1'-0"



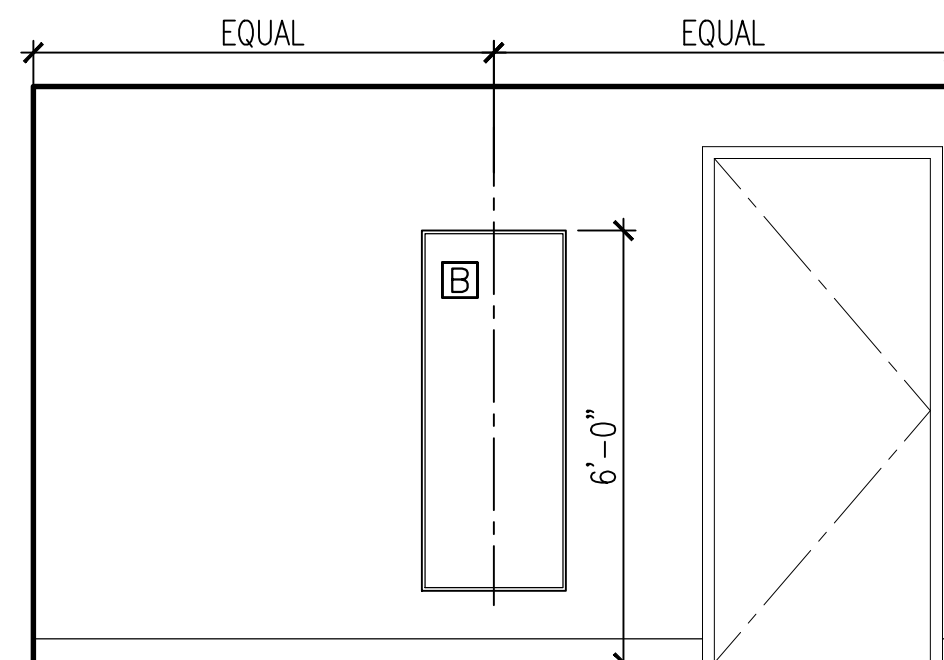
NOTE:  
WAINSCOT OCCURS AT ALL WALLS



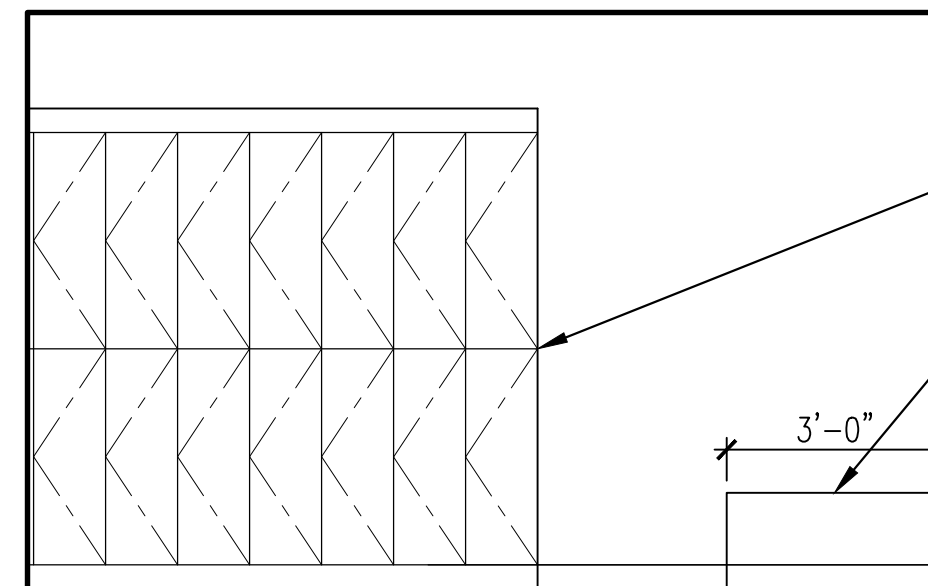
6 DECONTAMINATION 308  
A406 3/8" = 1'-0"



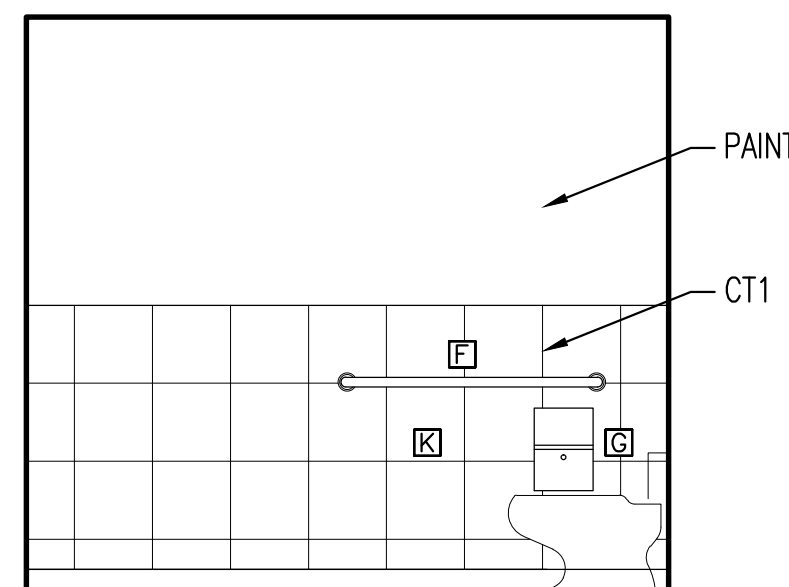
5 DECONTAMINATION 308.  
A406 3/8" = 1'-0"



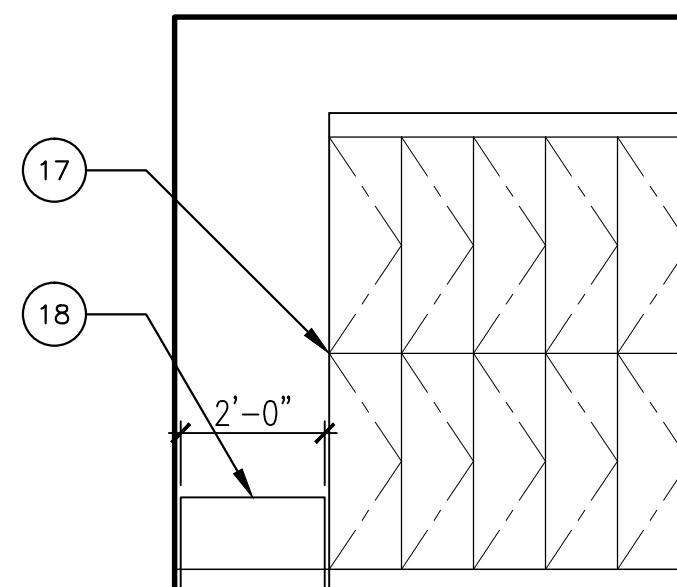
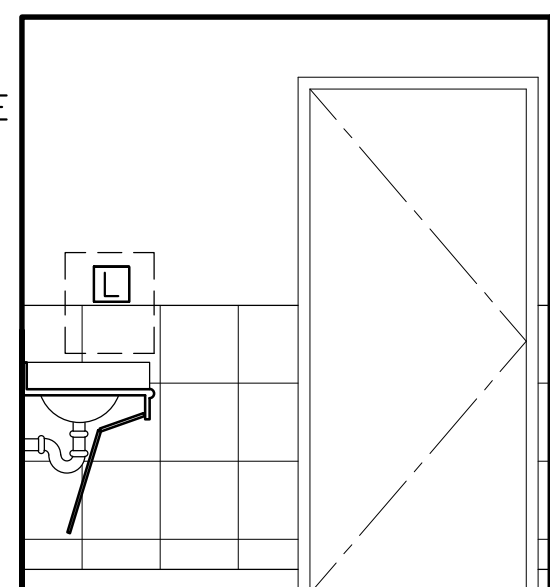
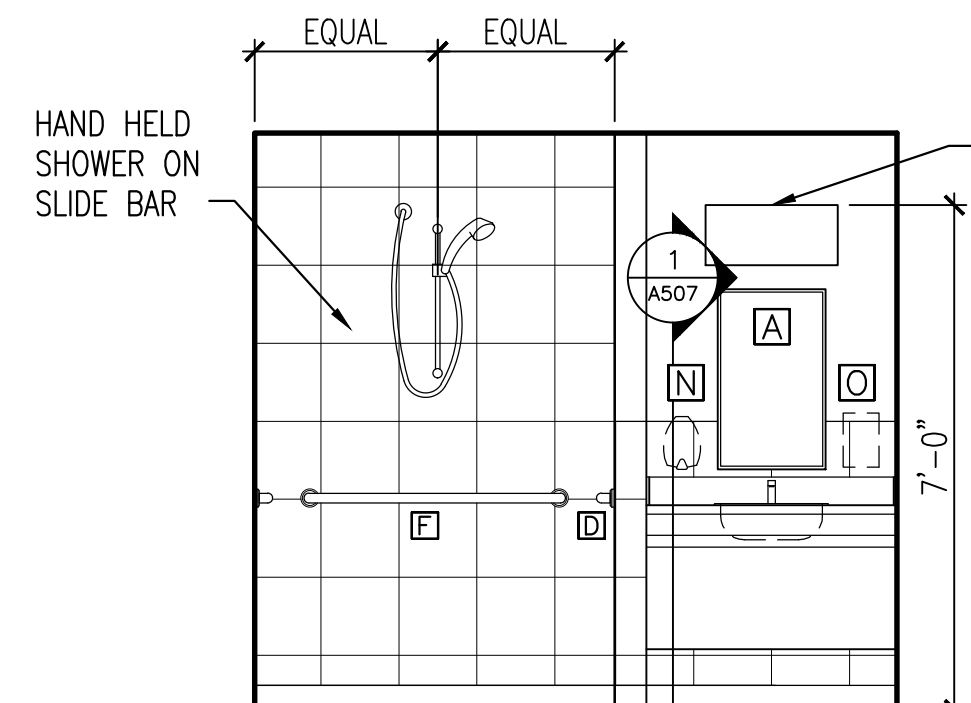
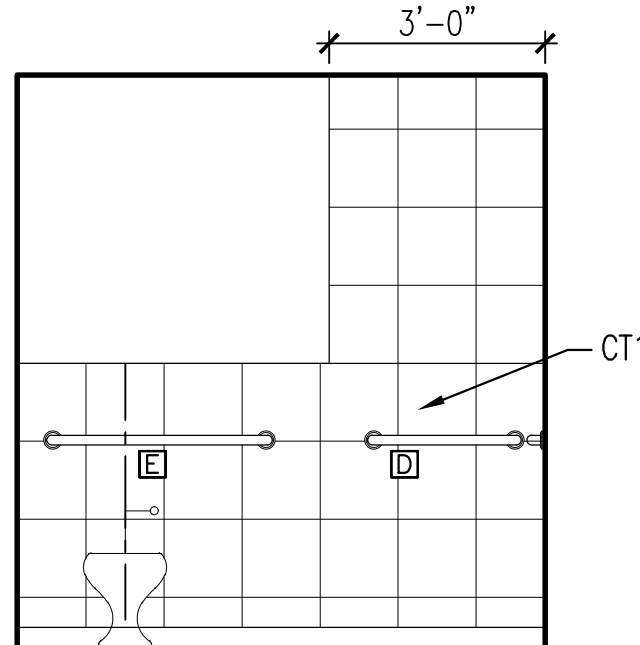
4 W. LOCKER 306  
A406 3/8" = 1'-0"



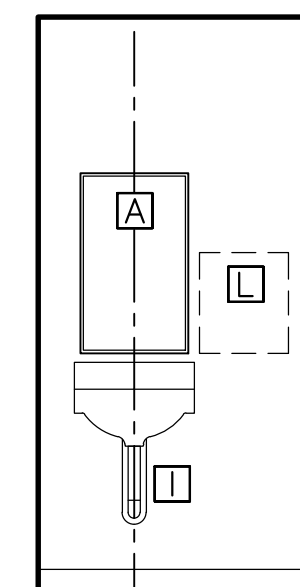
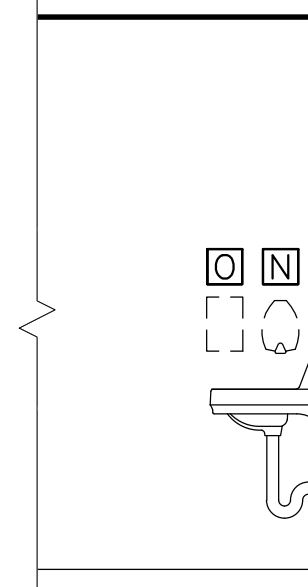
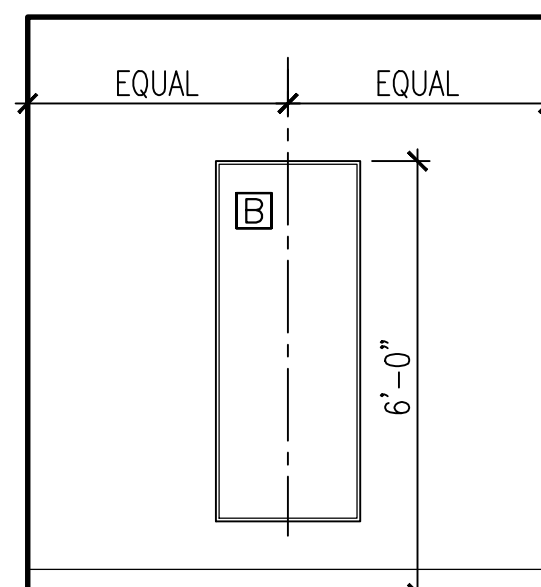
1 ANTEROOM 303  
A406 3/8" = 1'-0"



3 M. TOILET & SHWR 305 (307 SIM. OPP. HAND)  
A406 3/8" = 1'-0"



2 M. LOCKER 304  
A406 3/8" = 1'-0"



### TOILET ACCESSORY SCHEDULE

ABREV.	DESCRIPTION	PRODUCT (BASIS OF DESIGN)	NOTES
A	MIRROR-24" X 36"		
B	MIRROR-24" X 60"		
C	24" GRAB BAR		
D	30" GRAB BAR		
E	36" GRAB BAR		
F	42" GRAB BAR		
G	SANITARY NAPKIN DISPOSAL	BOBRICK B-270	
H	MOP/BROOM HOLDER	BOBRICK B-259	
I	THERMAL PIPE SHIELD		
J	BABY CHANGING STATION	KOALA KARE KB200	
K	TOILET PAPER DISPENSER	GA PACIFIC COMPACT QUAD 56744	1
L	PAPER TOWEL DISPENSER	GA PACIFIC FMOTICON 59462	1
M	SANITARY NAPKIN DISPENSER	HOSPITAL SPECIALTY CO. DUAL 1/MT1	1
N	SOAP DISPENSER	BUCKEYE JANITORIAL BE99012058	1
O	LOTION/SOAP DISPENSER	STERIS 4D4005	1

GENERAL NOTES:  
ALL LISTED TOILET ACCESSORIES TO BE INSTALLED BY CONTRACTOR  
REFER TO SHEET G003 FOR TYPICAL MOUNTING HEIGHTS

KEY NOTES:  
1 PROVIDED BY VAMC

GENERAL EQUIPMENT NOTES:  
1 ARCHITECTURAL AND ENGINEERING DOCUMENTS ARE BASED ON EQUIPMENT INFORMATION PROVIDED BY THE VAMC DURING DESIGN. THE BASIS OF DESIGN MODELS ARE LISTED ABOVE. PRIOR TO ROUGH-IN OF ANY VA-FURNISHED EQUIPMENT, CONTRACTOR SHALL VERIFY MAKE, MODEL AND ALL M/E/P, STRUCTURAL AND OTHER REQUIREMENTS OF EQUIPMENT AND COORDINATE WITH CONSTRUCTION, UTILITIES OR ROUGH-IN. REFER TO SPEC SECTION 11 70 00 "EQUIPMENT" FOR ADDITIONAL INFORMATION.

KEY NOTES:  
1 HALF-HEIGHT LOCKERS

### FINAL SUBMITTAL

CONSULTANTS:		ARCHITECT:		Drawing Title:		Project Title:		Project Number:		OFFICE OF CONSTRUCTION AND FACILITIES MANAGEMENT  VA U.S. Department of Veterans Affairs	
		TOLAND MIZELL MOLNAR		INTERIOR ELEVATIONS-THIRD FLOOR		EXPAND RADIOLOGY AND SPS OVERTON BROOKS VAMC		667-083			
				Approved: Project Director		location: SHREVEPORT, LA		Building Number: 1			
						Date: 04-17-2015		Drawing Number: A406			
Revisions:								Checked: XX			
Date:								Drawn: XX			
								Dwg. 37 of 160			