

Drawing File: \\Projects\1313 Renovate Radiology & SPS - VA Shreveport\Drawings\Renovate Radiology & SPS - VA Shreveport\Drawings\Fourth Floor.dwg
Plotted by: hamed
Plotted Date: May 20, 2015 3:35pm

one-eighth inch = one foot
one-quarter inch = one foot
three-eighths inch = one foot
one-half inch = one foot
three-quarters inch = one foot
one inch = one foot
one and one-half inches = one foot
three inches = one foot

EQUIPMENT SCHEDULE

MARK	DESCRIPTION	QTY.	FURNISHED		INSTALLED		PRODUCT (BASIS OF DESIGN)	NOTES
			GC	VA	GC	VA		
1	DENTAL LUBRICATOR	4		X		X	ASSISTINA 301 PLUS/NSK CARE 3 PLUS	
2	WATER PURIFICATION SYSTEM	1	X		X		AMERIWATER RO3 MODEL #00HCS-2055	
3	DETERGENT DISPENSING SYSTEM	1		X		X		
4	ULTRASONIC CLEANER (SINGLE)	1		X		X	CAVIWAVE 20-W	
5	ULTRASONIC CLEANER (DOUBLE)	1		X		X	CAVIWAVE 20-WRD	
6	WASHER/DISINFECTOR	2+1 FUT		X		X	STERIS RELIANCE HAMO VISION	
7	PASS THROUGH	4	X		X		AAMSCO	
8	CART WASH	1		X	X		STERIS VISION 1327	
9	STEAM GUN	1	X		X		GETTINGE 7510	
10	ENDOSCOPE REPROCESSOR	3		X		X	MEDIVATOR 2.0	
11	ENDOSCOPE DRYING CABINET	1		X		X		
12	DRYING CABINET	1		X		X		
13	LOW TEMPERATURE STERILIZER	2		X		X	AAMSCO V-PRO MAX	
14	STEAM STERILIZER (SMALL)	1		X		X	AAMSCO 400 SERIES	
15	STEAM STERILIZER (LARGE)	2		X		X	AAMSCO EVOLUTION	
16	PREP AND PACK TABLE	3		X		X		
17	LOCKER	48	X		X			1
18	LOCKER ROOM BENCH	4	X		X			2
30	CT SCANNER	1		X		X	TOSHIBA AQUILION	
31	MRI-CLOSED	1		X		X	HITACHI OASIS MARK II	
32	MRI-OPEN	1		X		X	HITACHI ECHELON OVAL	
33	ICE MACHINE/DISPENSER	1		X		X	SCOTSMAN MDT5N25A-1J	

GENERAL EQUIPMENT NOTES:
1 ARCHITECTURAL AND ENGINEERING DOCUMENTS ARE BASED ON EQUIPMENT INFORMATION PROVIDED BY THE VAMC DURING DESIGN. THE BASIS OF DESIGN MODELS ARE LISTED ABOVE. PRIOR TO ROUGH-IN OF ANY VA-FURNISHED EQUIPMENT, CONTRACTOR SHALL VERIFY MAKE, MODEL AND ALL M/E/P, STRUCTURAL AND OTHER REQUIREMENTS OF EQUIPMENT AND COORDINATE WITH CONSTRUCTION, UTILITIES OR ROUGH-IN. REFER TO SPEC SECTION 11 70 00 "EQUIPMENT" FOR ADDITIONAL INFORMATION.

KEY NOTES:
1 HALF-HEIGHT LOCKERS
2 SEE INTERIOR ELEVATIONS FOR LENGTHS

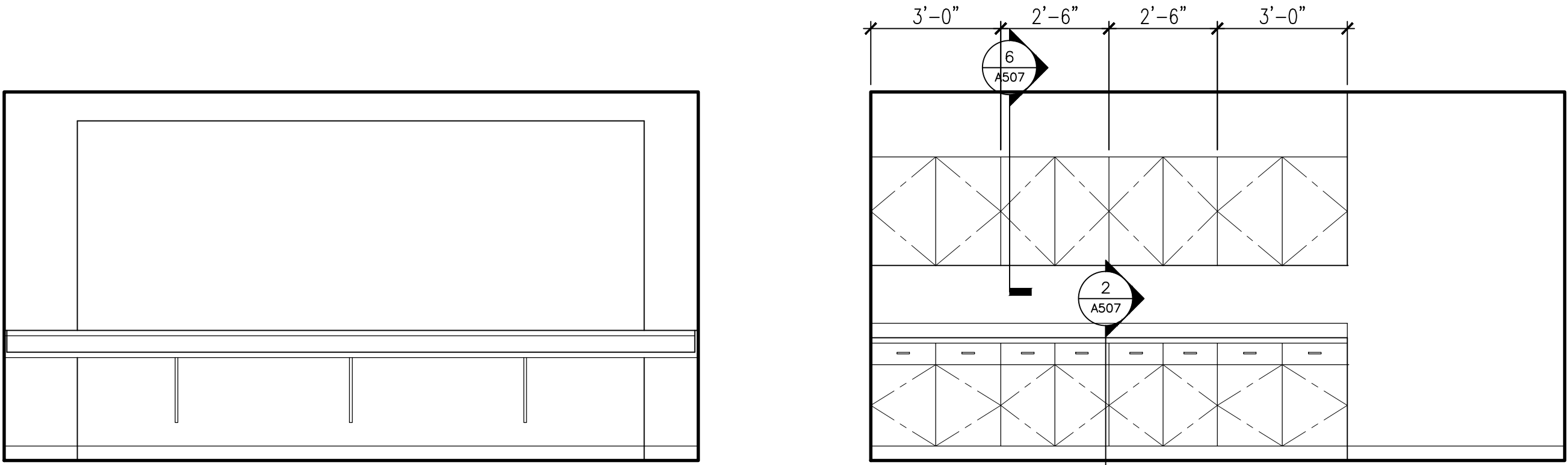
TOILET ACCESSORY SCHEDULE

ABREV.	DESCRIPTION	PRODUCT (BASIS OF DESIGN)	NOTES
A	MIRROR-24" X 36"		
B	MIRROR-24" X 60"		
C	24" GRAB BAR		
D	30" GRAB BAR		
E	36" GRAB BAR		
F	42" GRAB BAR		
G	SANITARY NAPKIN DISPOSAL	BOBRICK B-270	
H	MOP/BROOM HOLDER	BOBRICK B-239	
I	THERMAL PIPE SHIELD		
J	BABY CHANGING STATION	KOALA KARE KB200	
K	TOILET PAPER DISPENSER	GA PACIFIC COMPACT QUAD 56744	1
L	PAPER TOWEL DISPENSER	GA PACIFIC EMOTICON 59462	1
M	SANITARY NAPKIN DISPENSER	HOSPITAL SPECIALTY CO. DUAL 1/MT1	1
N	SOAP DISPENSER	BUCKEYE JANITORIAL BE99012058	1
O	LOTION/SOAP DISPENSER	STERIS 4D4005	1

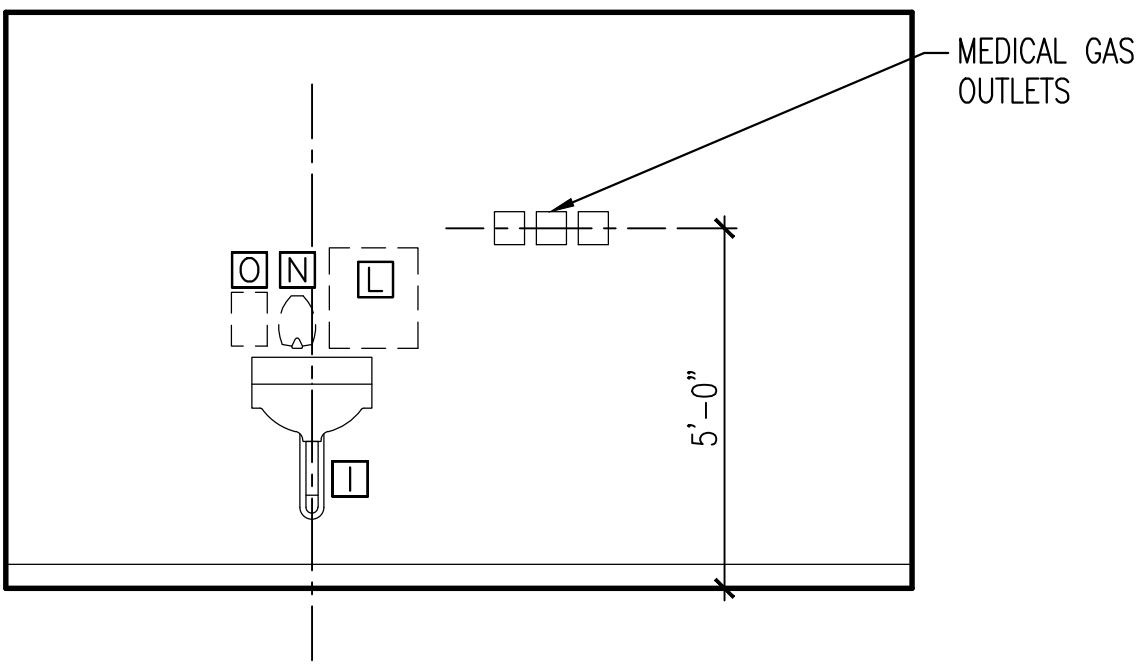
GENERAL NOTES:
ALL LISTED TOILET ACCESSORIES TO BE INSTALLED BY CONTRACTOR
REFER TO SHEET G003 FOR TYPICAL MOUNTING HEIGHTS

KEY NOTES:
1 PROVIDED BY VAMC

8 RECEPTION 4W17
A409 3/8" = 1'-0"

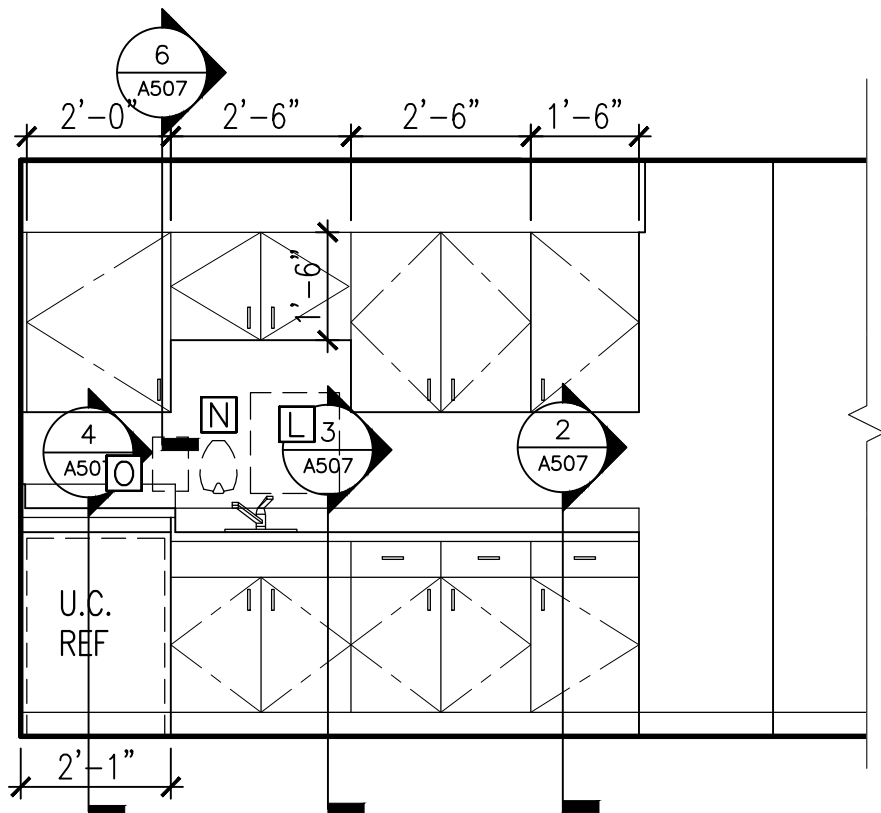


8 RECEPTION 4W17
A409 3/8" = 1'-0"



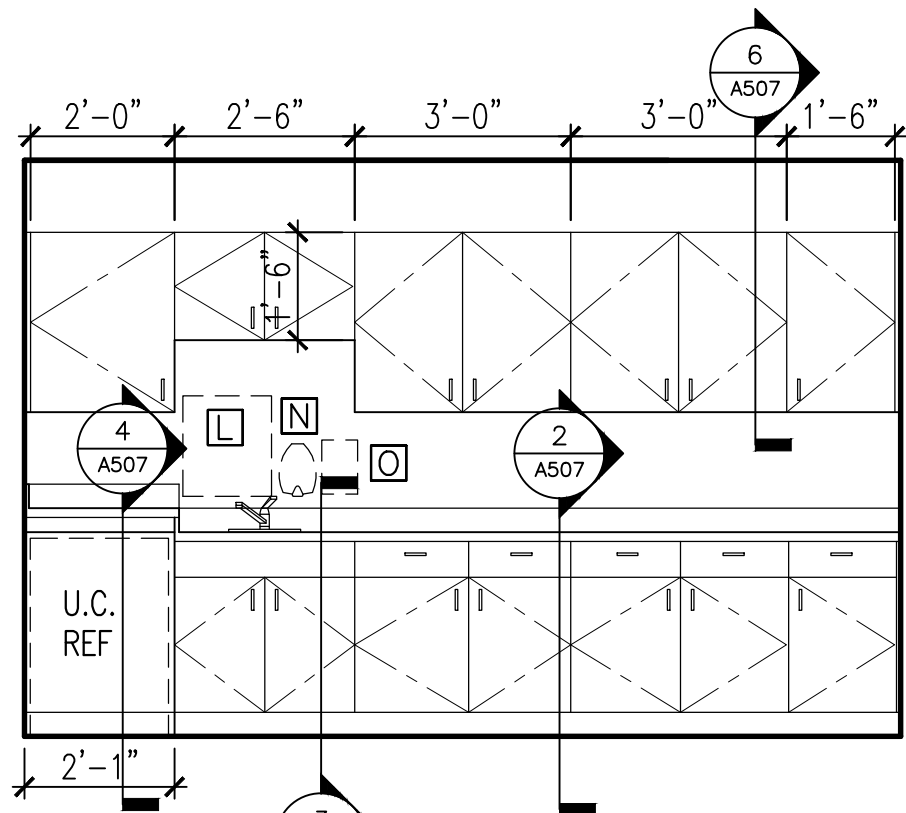
6 MINOR PROCEDURE 451
A409 3/8" = 1'-0"

6 MINOR PROCEDURE 451
A409 3/8" = 1'-0"



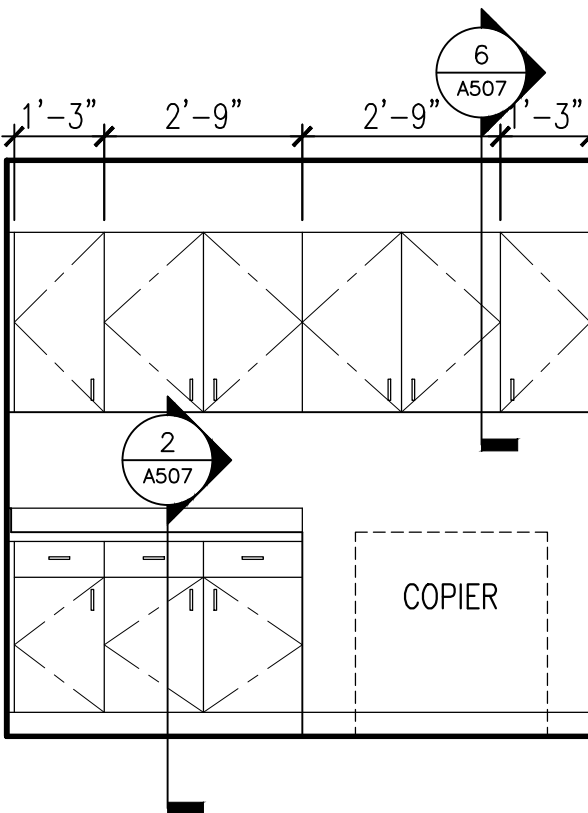
5 LOUNGE 442
A409 3/8" = 1'-0"

5 LOUNGE 442
A409 3/8" = 1'-0"



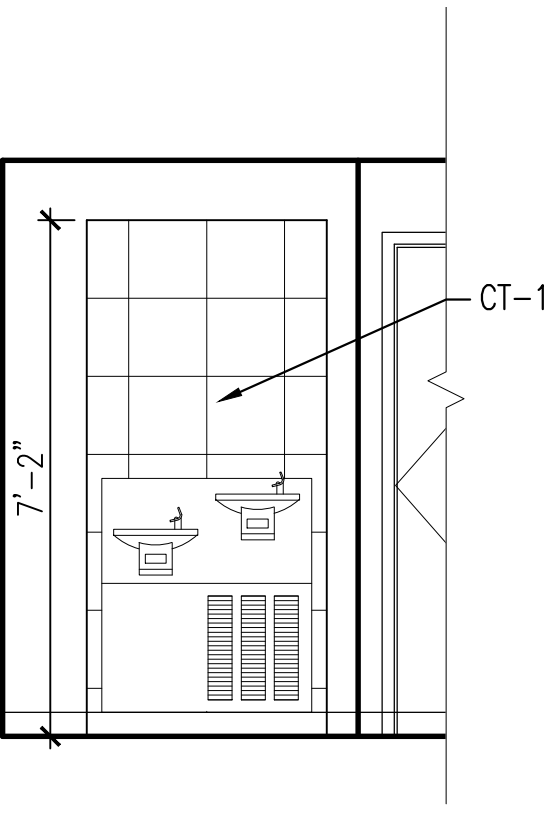
4 CONFERENCE 437
A409 3/8" = 1'-0"

4 CONFERENCE 437
A409 3/8" = 1'-0"



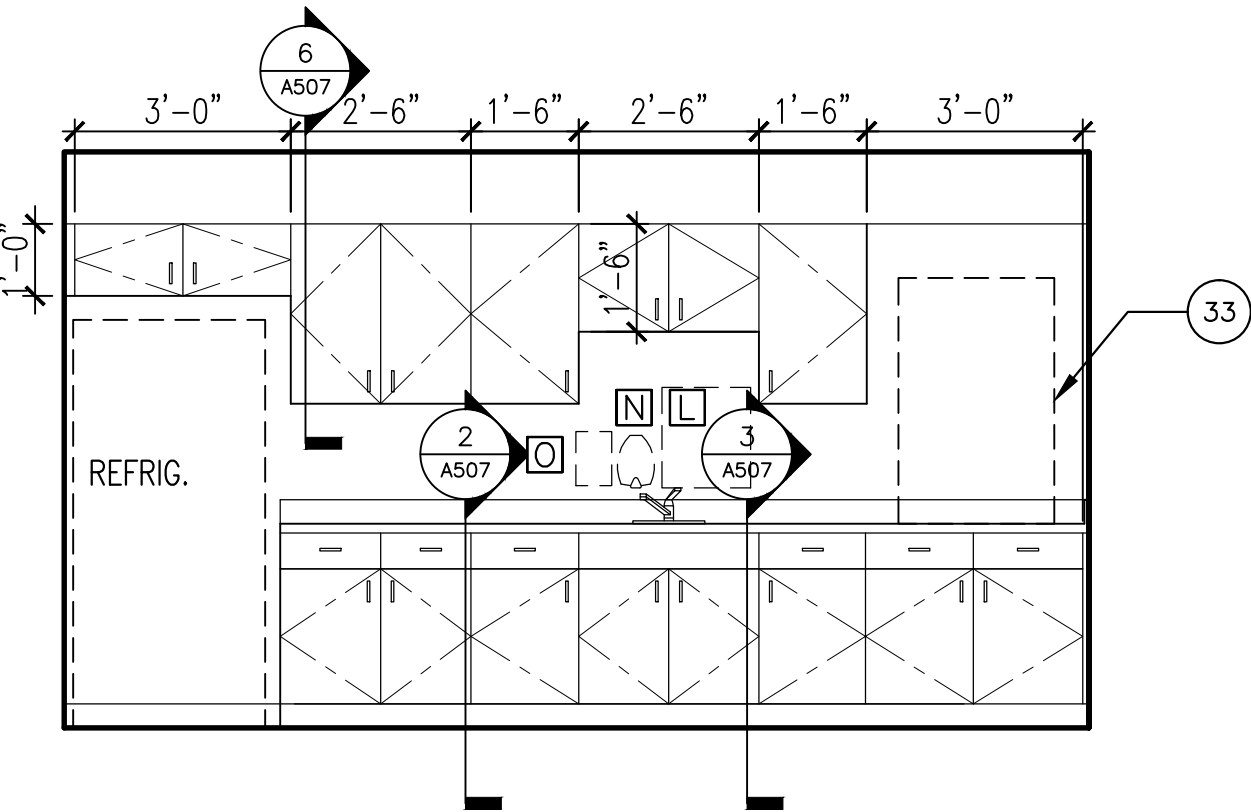
3 COPY 436
A409 3/8" = 1'-0"

3 COPY 436
A409 3/8" = 1'-0"



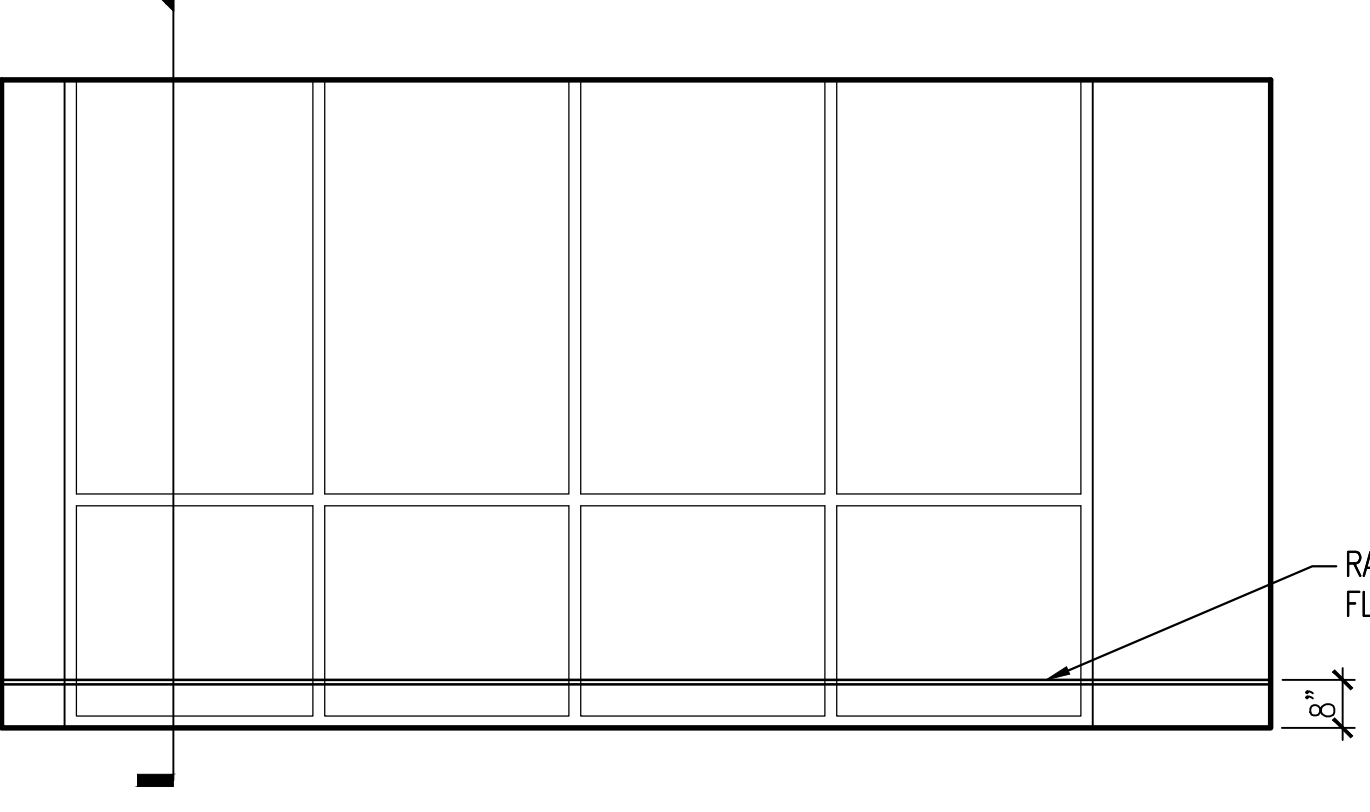
7 CORRIDOR 402
A409 3/8" = 1'-0"

7 CORRIDOR 402
A409 3/8" = 1'-0"



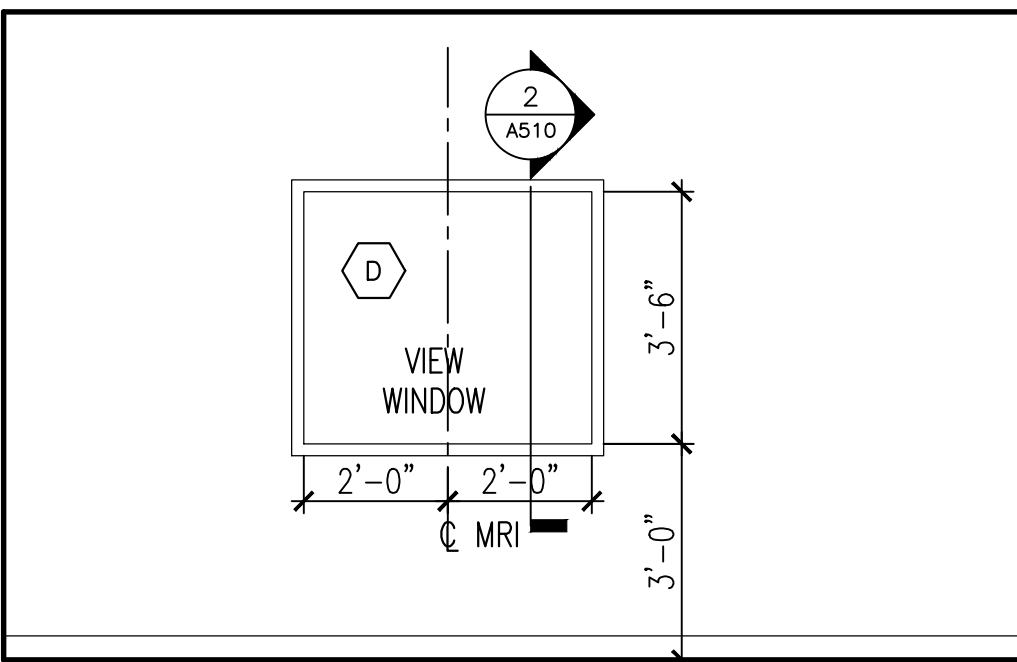
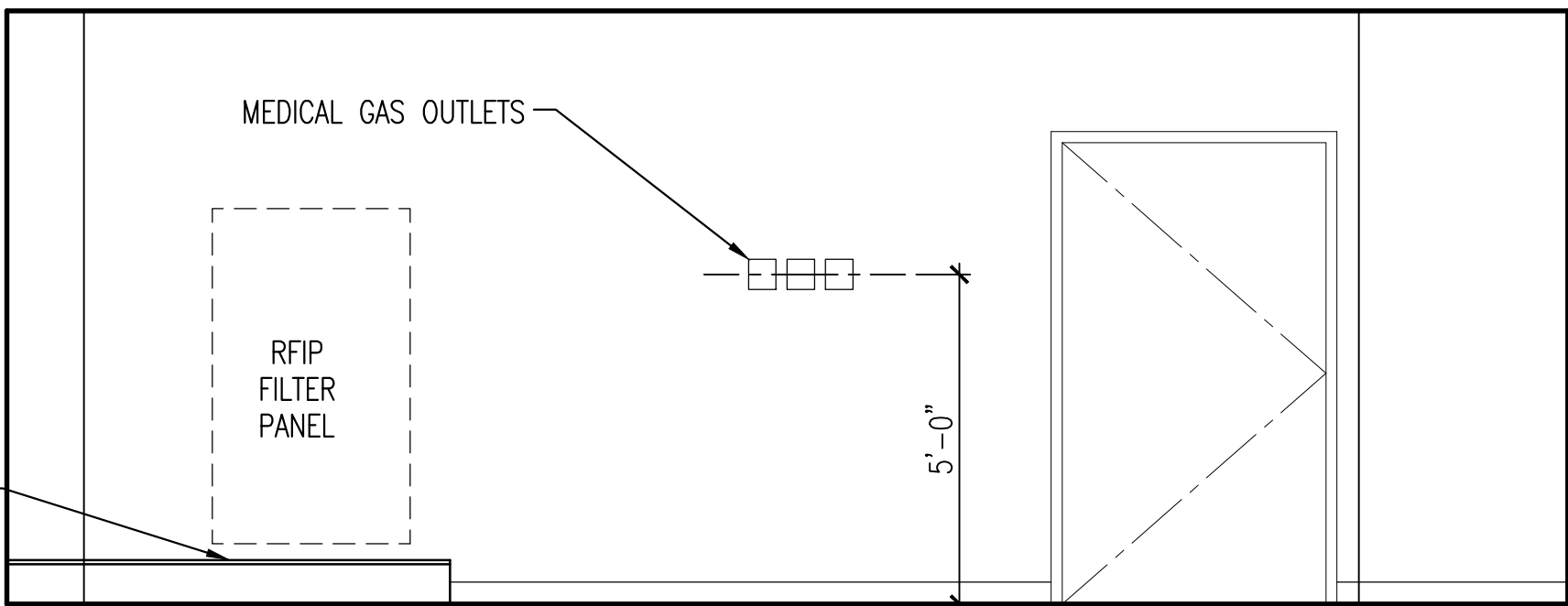
2 STAFF BREAK ROOM 432
A409 3/8" = 1'-0"

2 STAFF BREAK ROOM 432
A409 3/8" = 1'-0"



1 MRI SCAN 428
A409 3/8" = 1'-0"

1 MRI SCAN 428
A409 3/8" = 1'-0"



CONSULTANTS:



ARCHITECT:



590 Means Street NW, Suite 200
Atlanta, GA 30318
404.214.9774

Drawing Title:

INTERIOR ELEVATIONS-FOURTH FLOOR

Approved: Project Director

Project Title:

EXPAND RADIOLOGY AND SPS
OVERTON BROOKS VAMC

Location:

SHREVEPORT, LA

Date:

04-17-2015

Checked:

XX

Drawn:

XX

Project Number:

667-083

Building Number:

1

Drawing Number:

A409

Dwg. 40 of 160

FINAL SUBMITTAL

OFFICE OF
CONSTRUCTION
AND FACILITIES
MANAGEMENT

