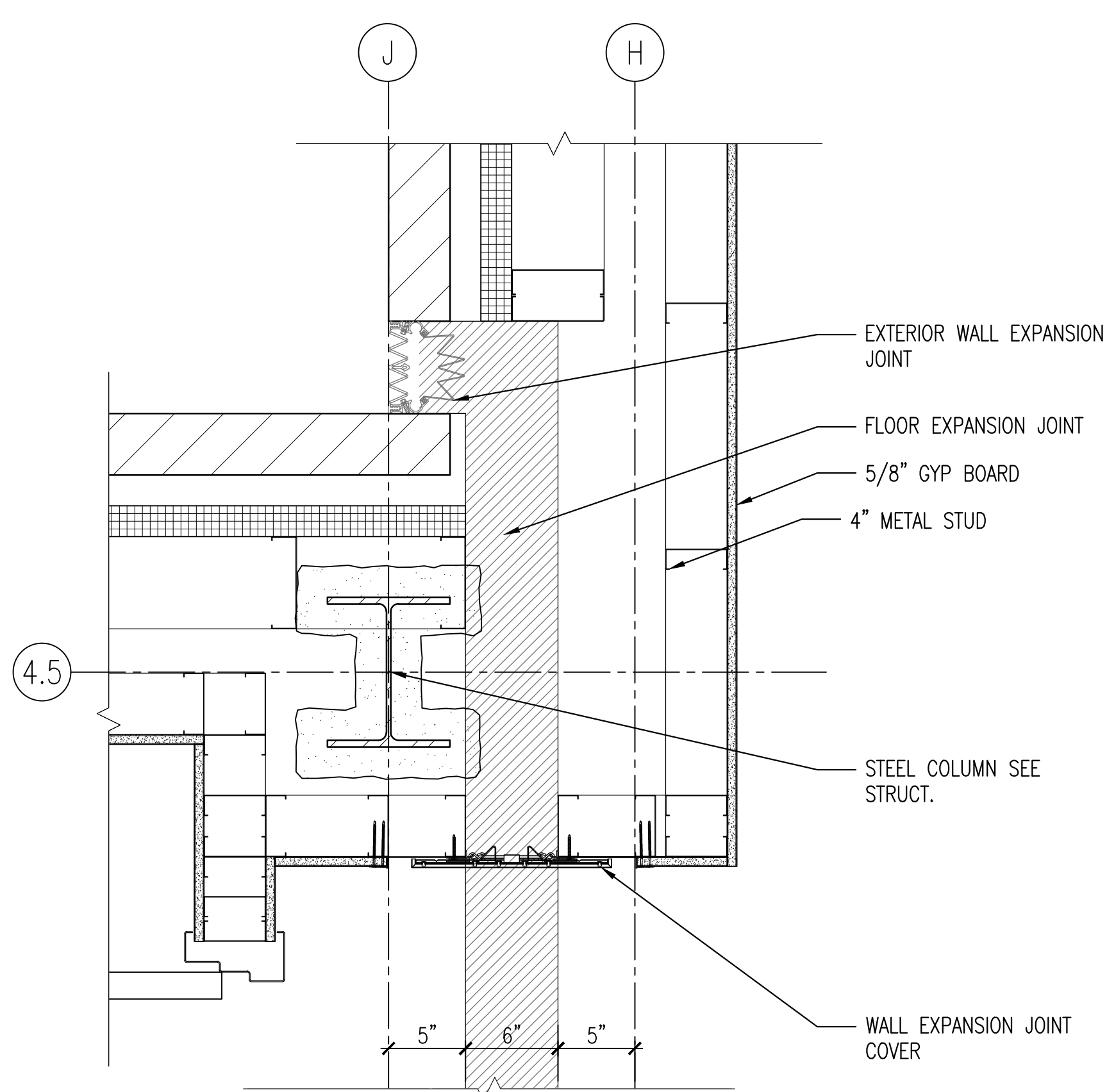
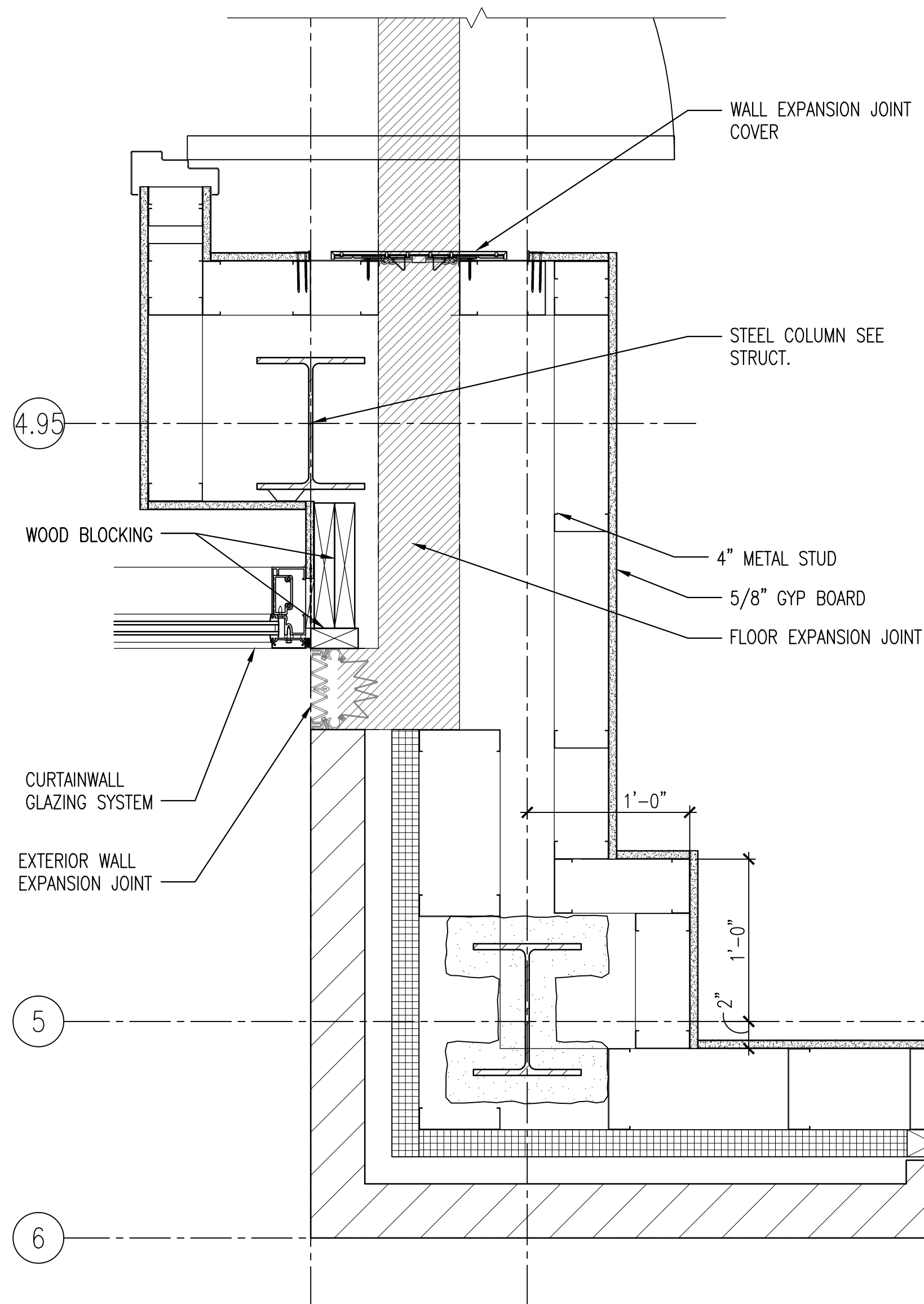


Drawing File: \\Projects\1313 Renovate Radiology & SPS - VA Shreveport\Drawings\Renovate Radiology & SPS - VA Shreveport\Drawings\A503 PLAN DETAILS.dwg
Plotted by: hamed
Plotted Date: May 20, 2015 4:00pm

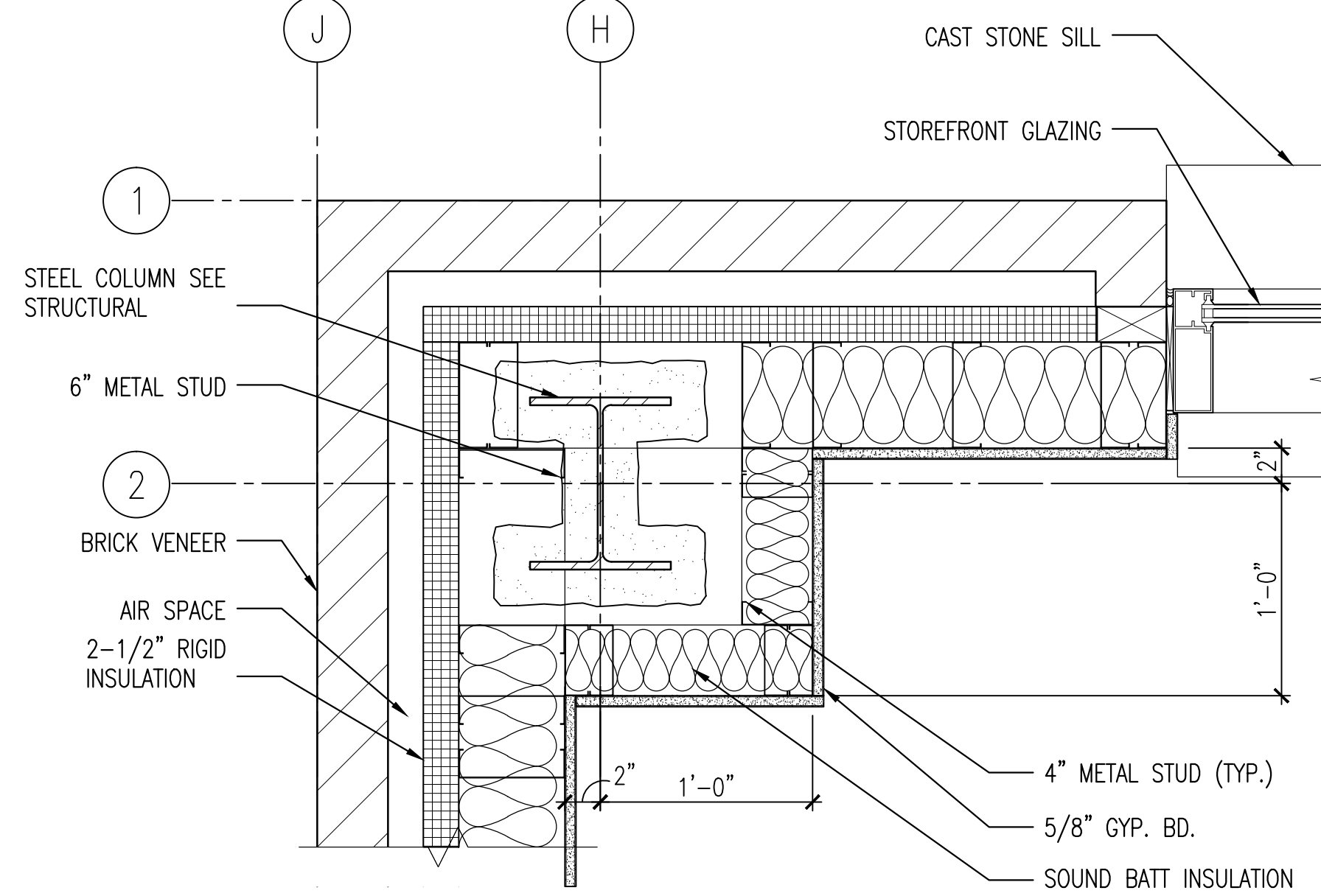
A three inches = one foot
B one one-half inches = one foot
C one inch = one foot
D three-quarters inch = one foot
E one-half inch = one foot
F three-eighths inch = one foot
G one-quarter inch = one foot
H one-eighth inch = one foot



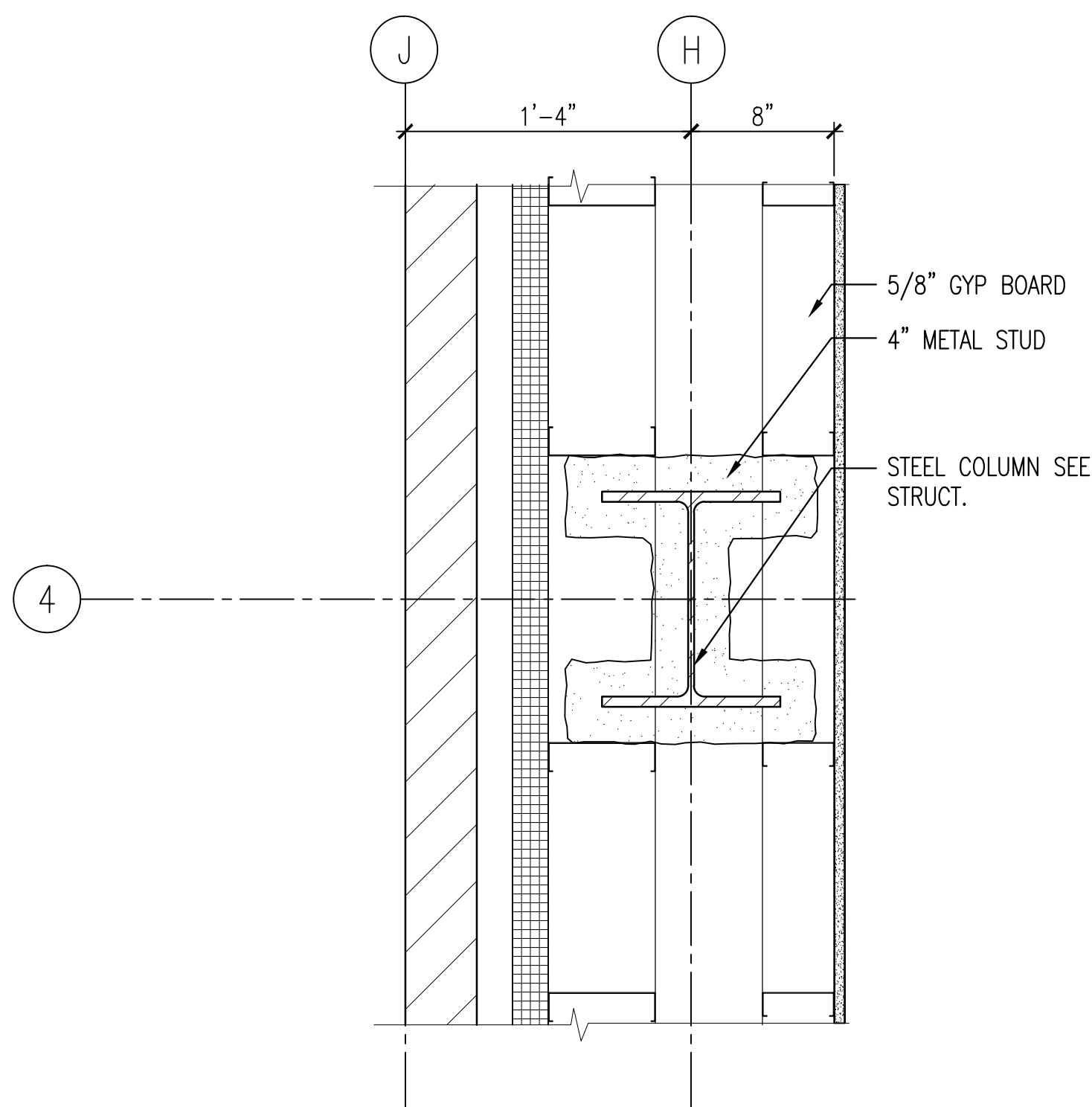
7 COLUMN J4.5
A503 1 1/2" = 1'-0"



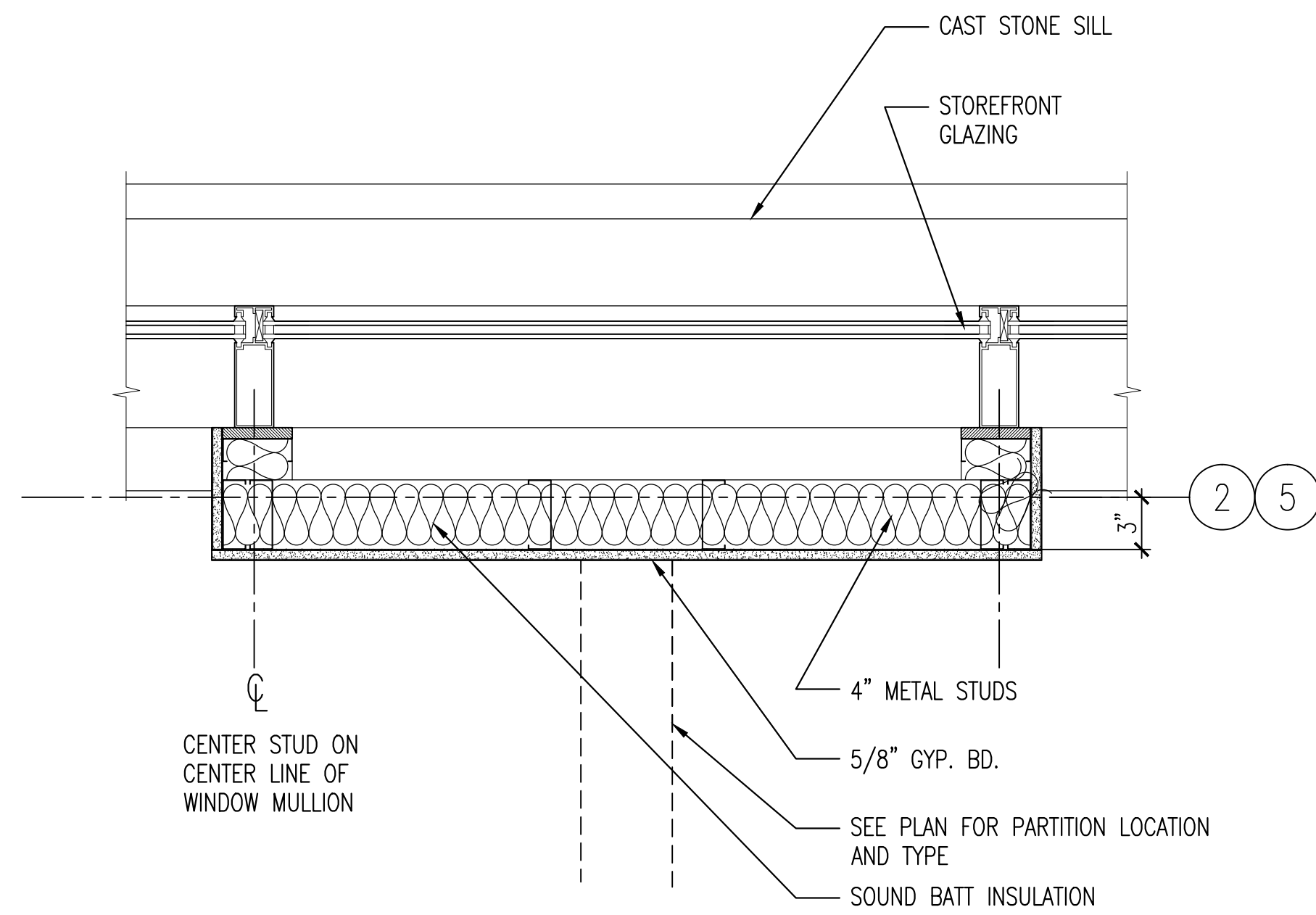
2 COLUMN J4.95
A503 1 1/2" = 1'-0"



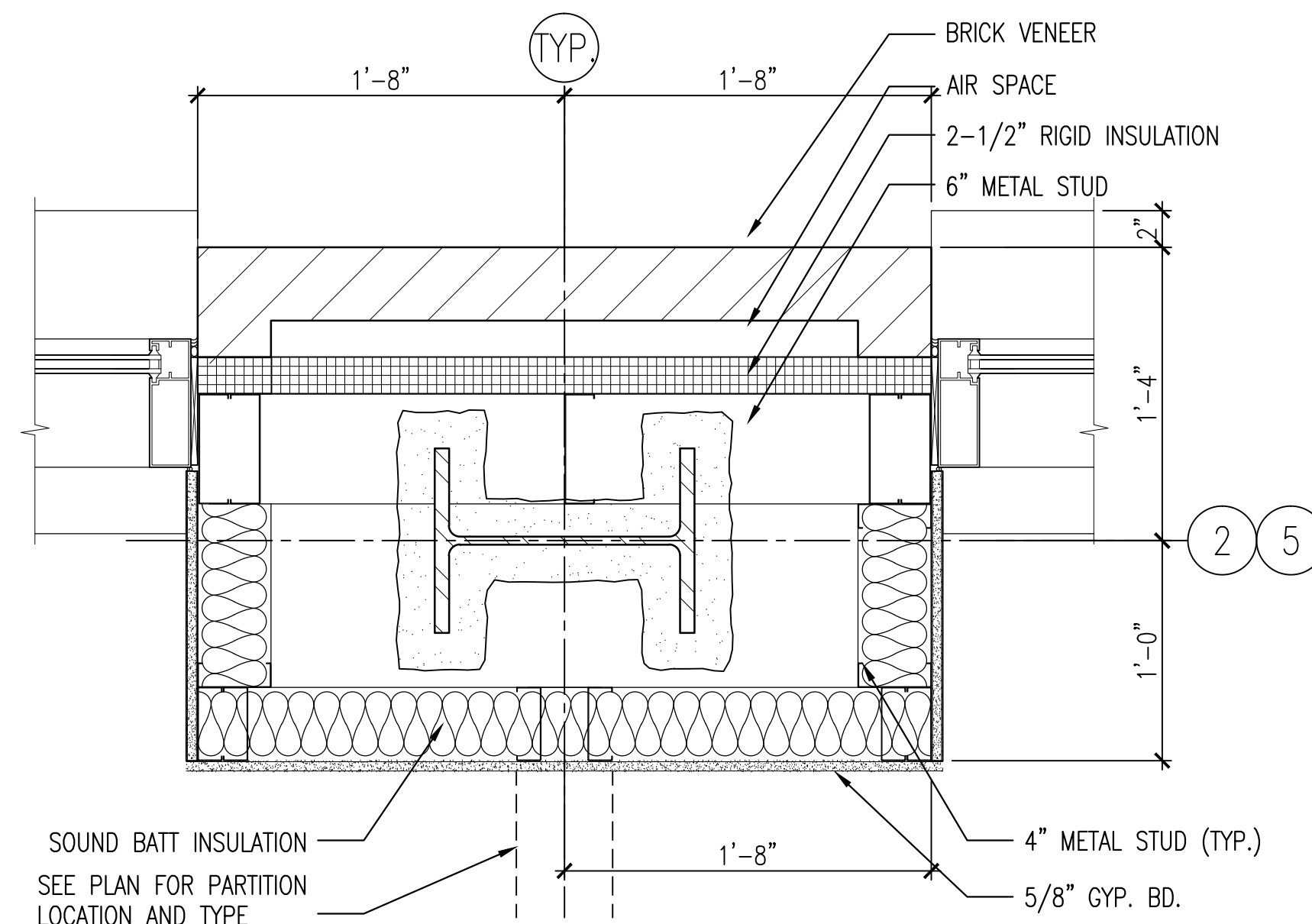
6 COLUMN H2
A503 1 1/2" = 1'-0"



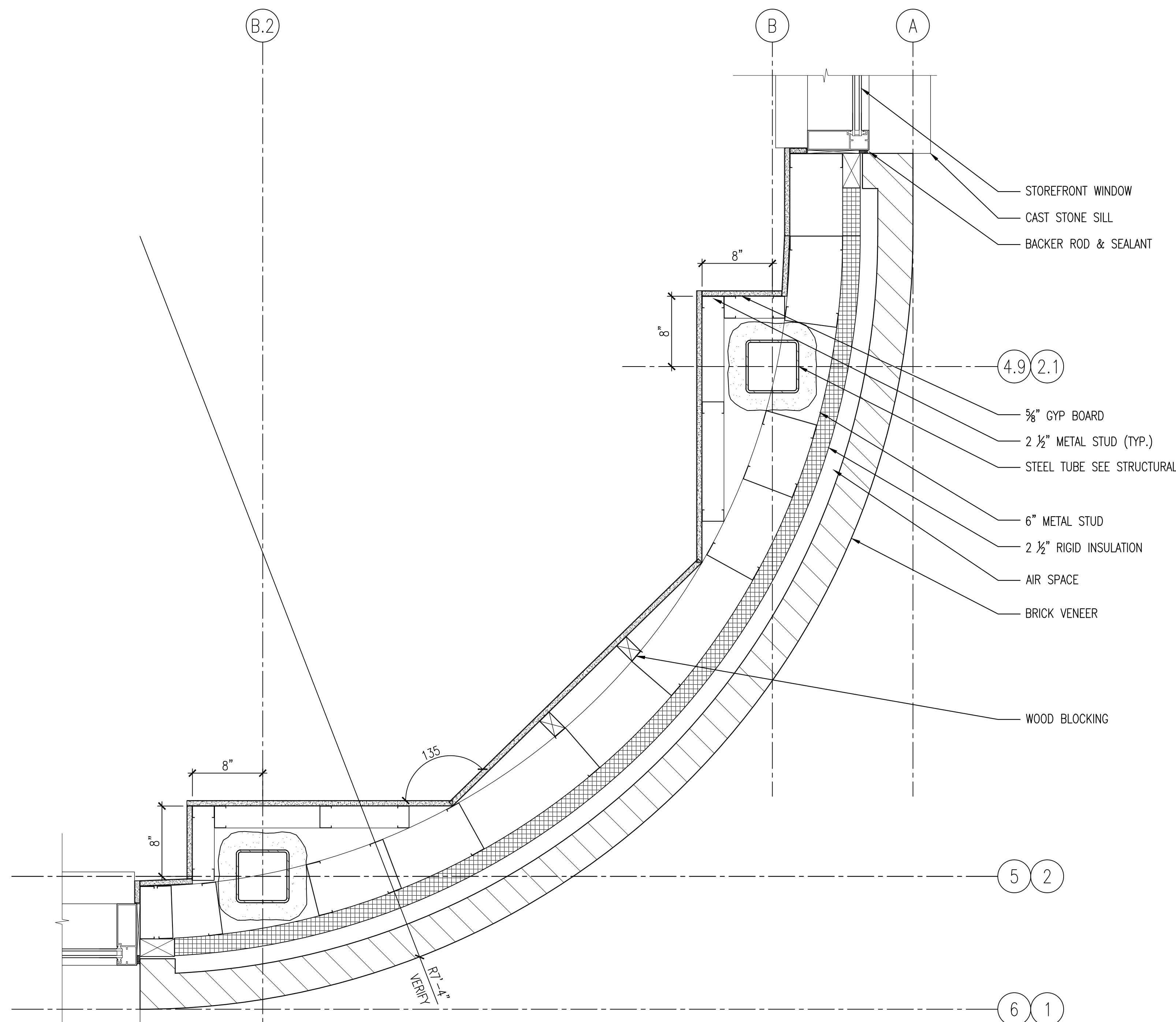
3 COLUMN H4
A503 1 1/2" = 1'-0"



5 PARTITION AT STOREFRONT
A503 1 1/2" = 1'-0"



4 TYPICAL WINDOW COLUMN
A503 1 1/2" = 1'-0"



1 COLUMN B2.1
A503 1 1/2" = 1'-0"

Revisions:		Date:		CONSULTANTS:				ARCHITECT:  590 Means Street NW, Suite 200 Atlanta, GA 30318 404.214.9774		Drawing Title: PLAN DETAILS		Project Title: EXPAND RADIOLOGY AND SPS OVERTON BROOKS VAMC		Project Number: 667-083		Building Number: 1		Drawing Number: A503		Dwg. 43 of 160		OFFICE OF CONSTRUCTION AND FACILITIES MANAGEMENT		VA 	
										Approved: Project Director		Location: SHREVEPORT, LA		Date: 04-17-2015		Checked: XX		Drawn: XX							

FINAL SUBMITTAL