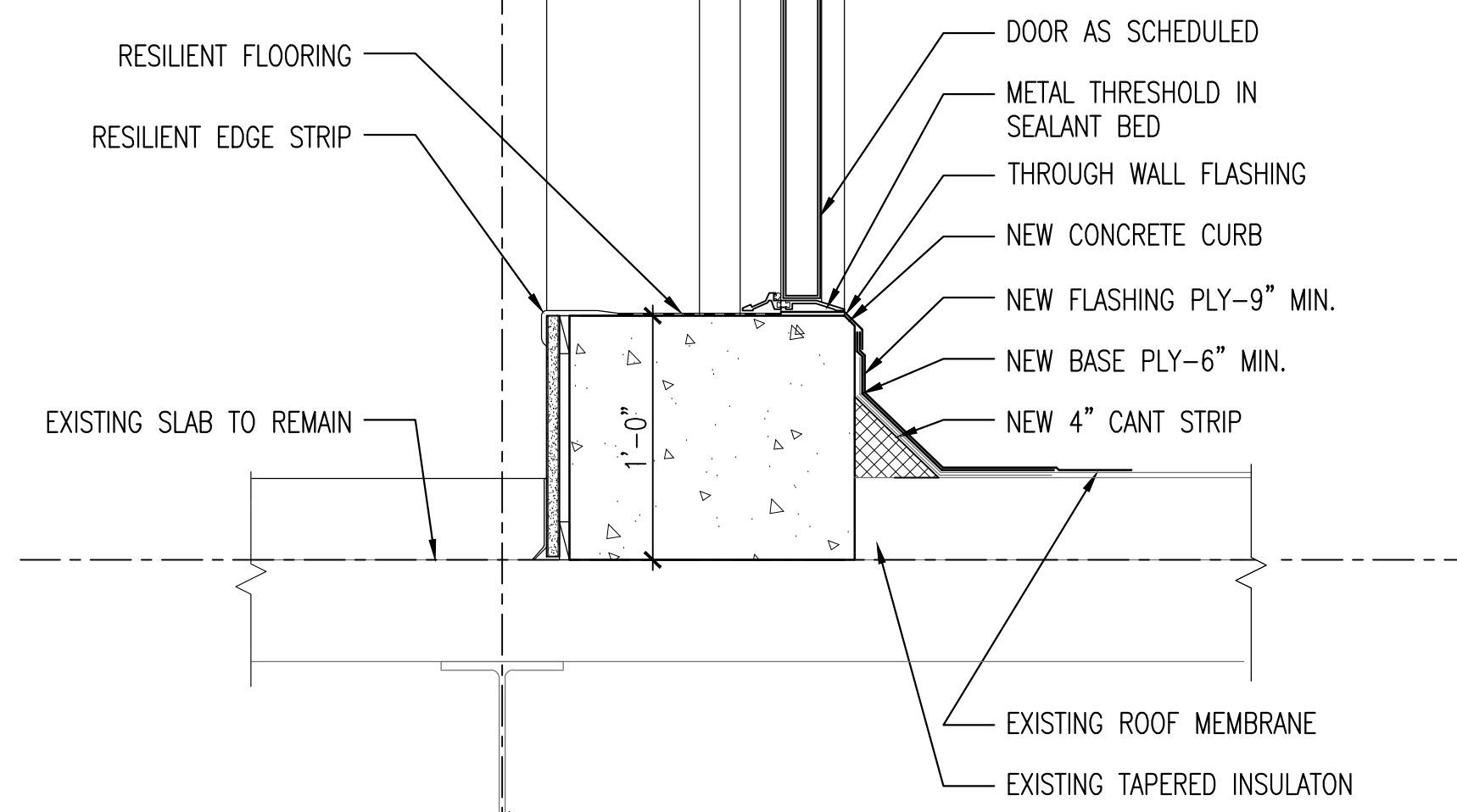
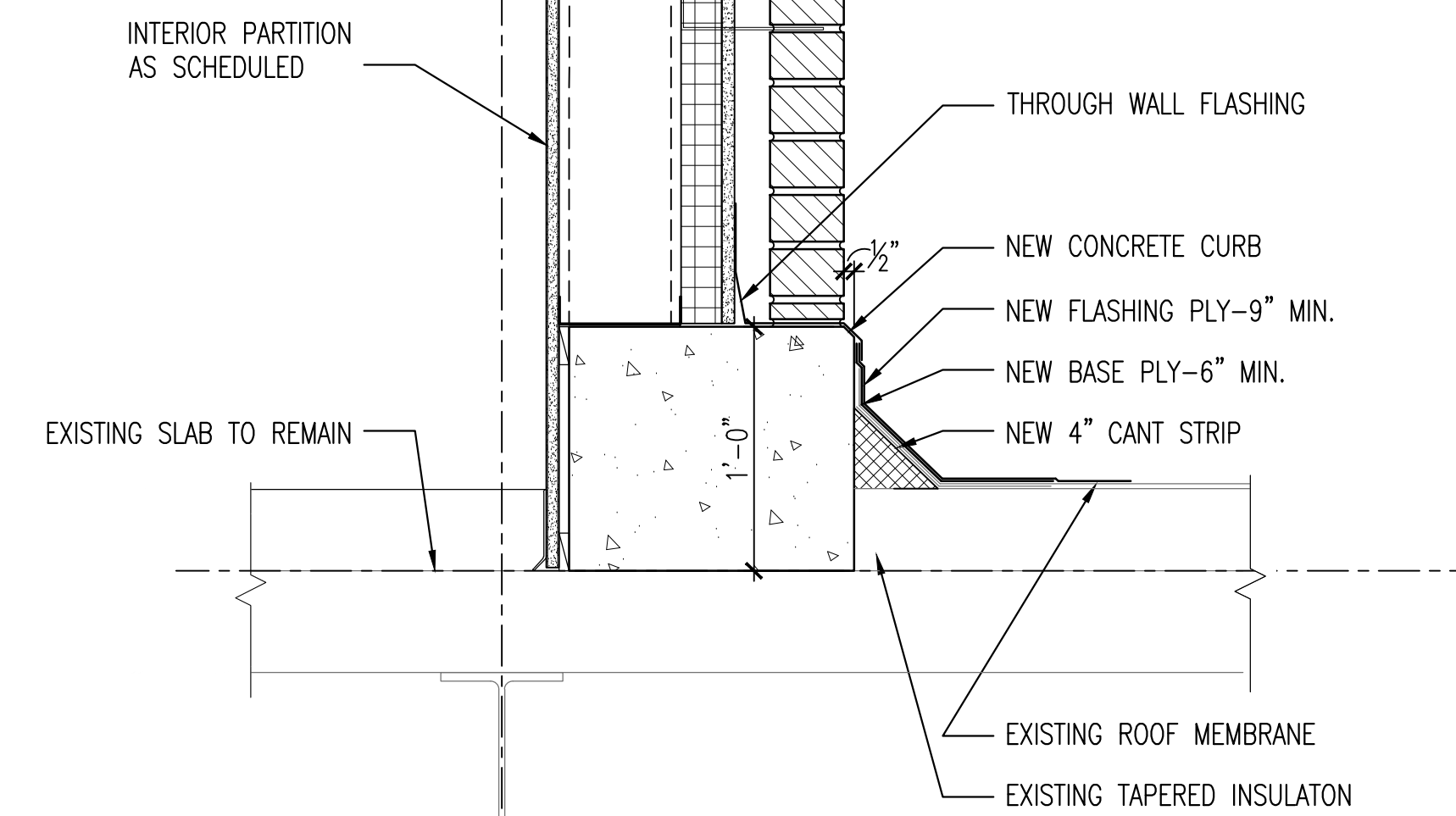


Drawing File: \\Projects\1313 Renovation Radiology & SPS VA Shreveport\3 1313 Drawings\RENOVATE RADIOLOGY & SPS - VA SHREVEPORT\Sheets\A504 SECTION DETAILS.dwg
Plotted by: hamed
Plotted Date: May 20, 2015 4:00pm

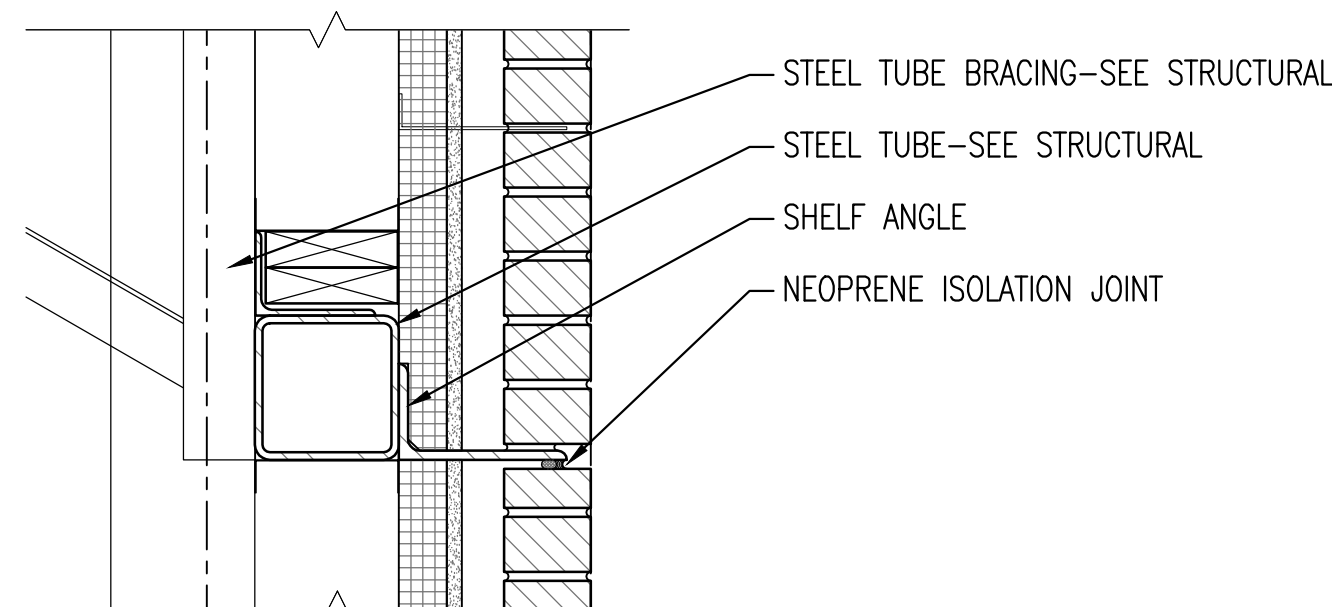
A three inches = one foot
B one and one-half inches = one foot
C one inch = one foot
D three-quarters inch = one foot
E one-half inch = one foot
F three-eighths inch = one foot
G one-quarter inch = one foot
H one-eighth inch = one foot



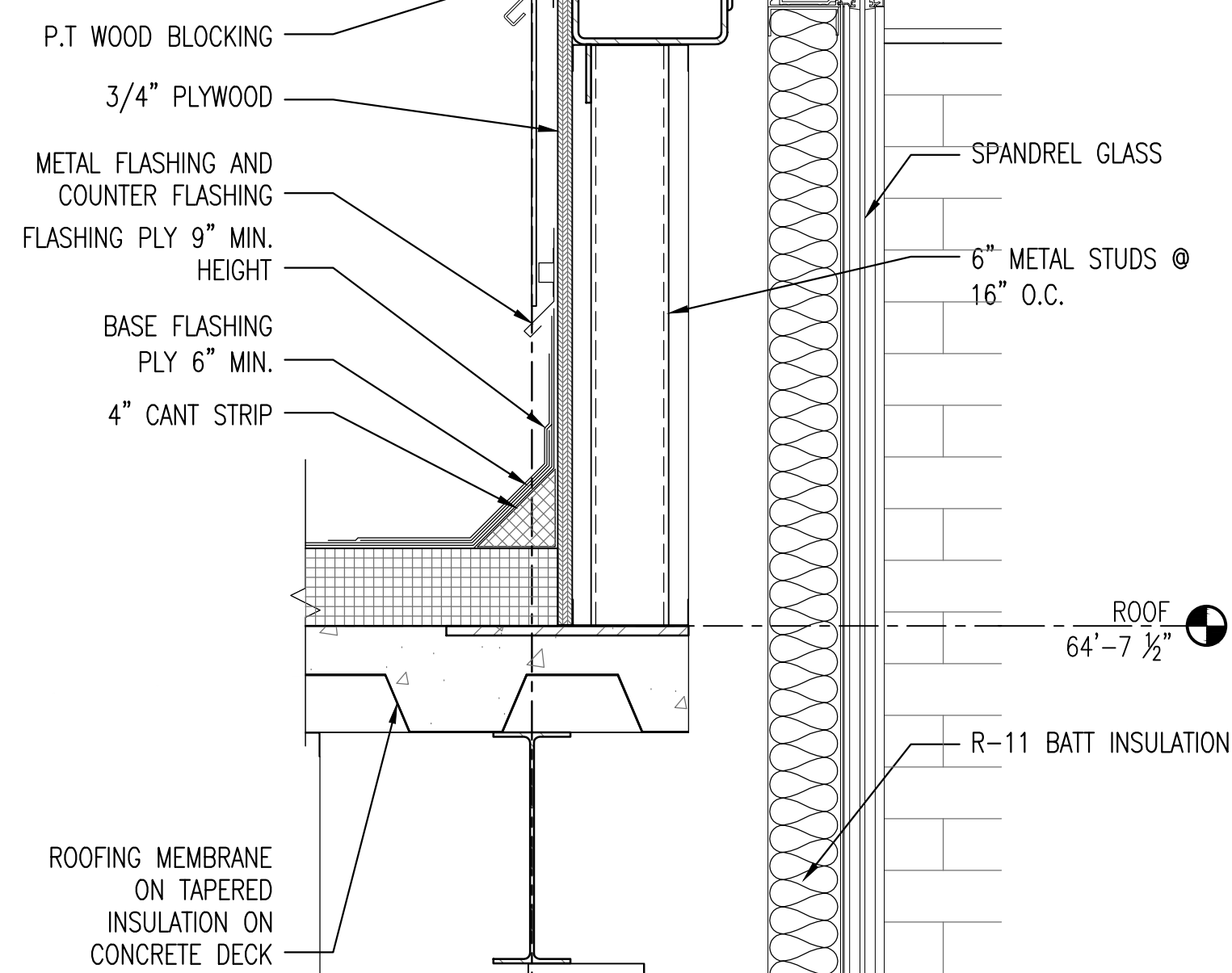
12 CURB AT DOOR
A504 1 1/2" = 1'-0"



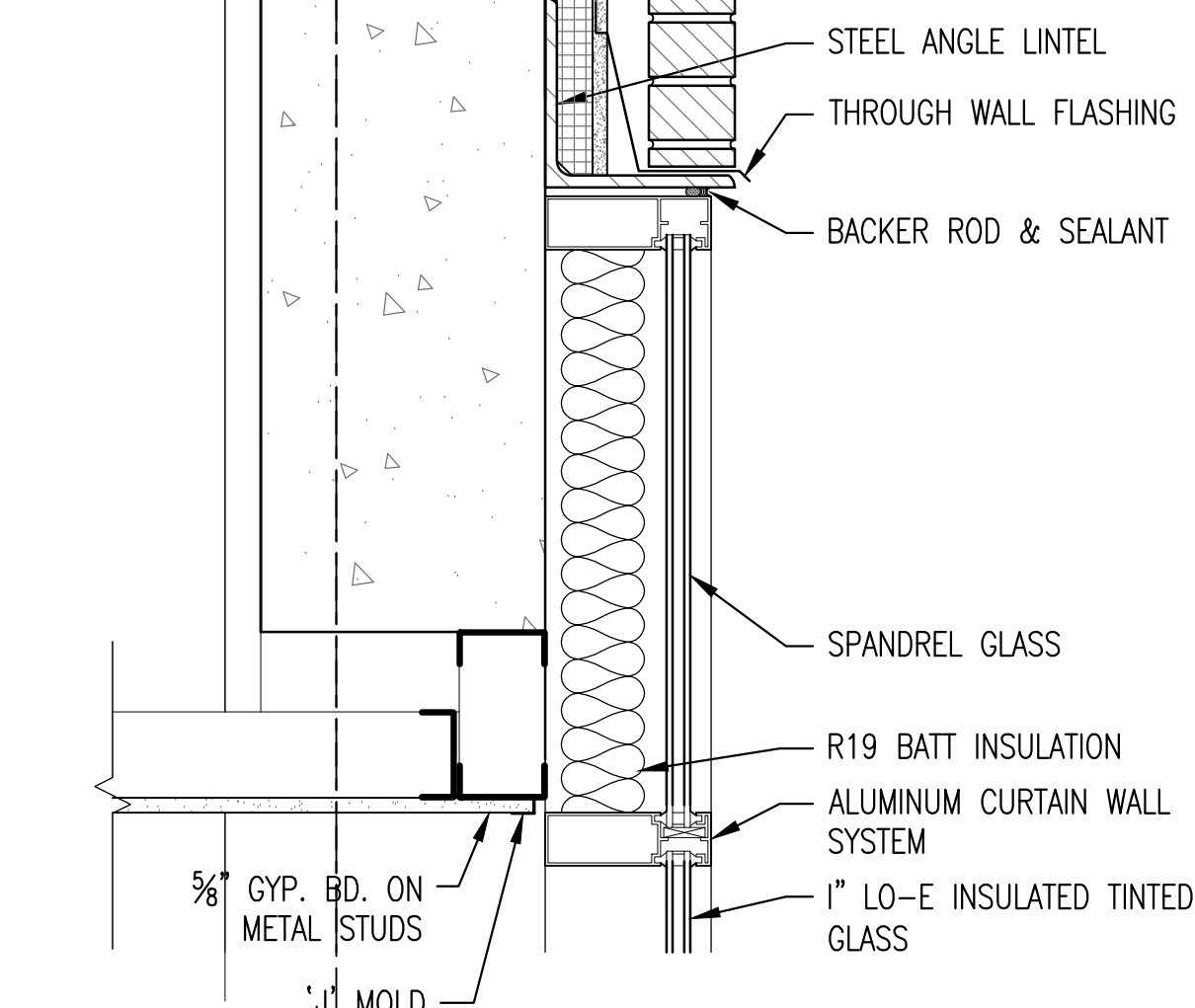
8 CURB AT EXISTING ROOF
A504 1 1/2" = 1'-0"



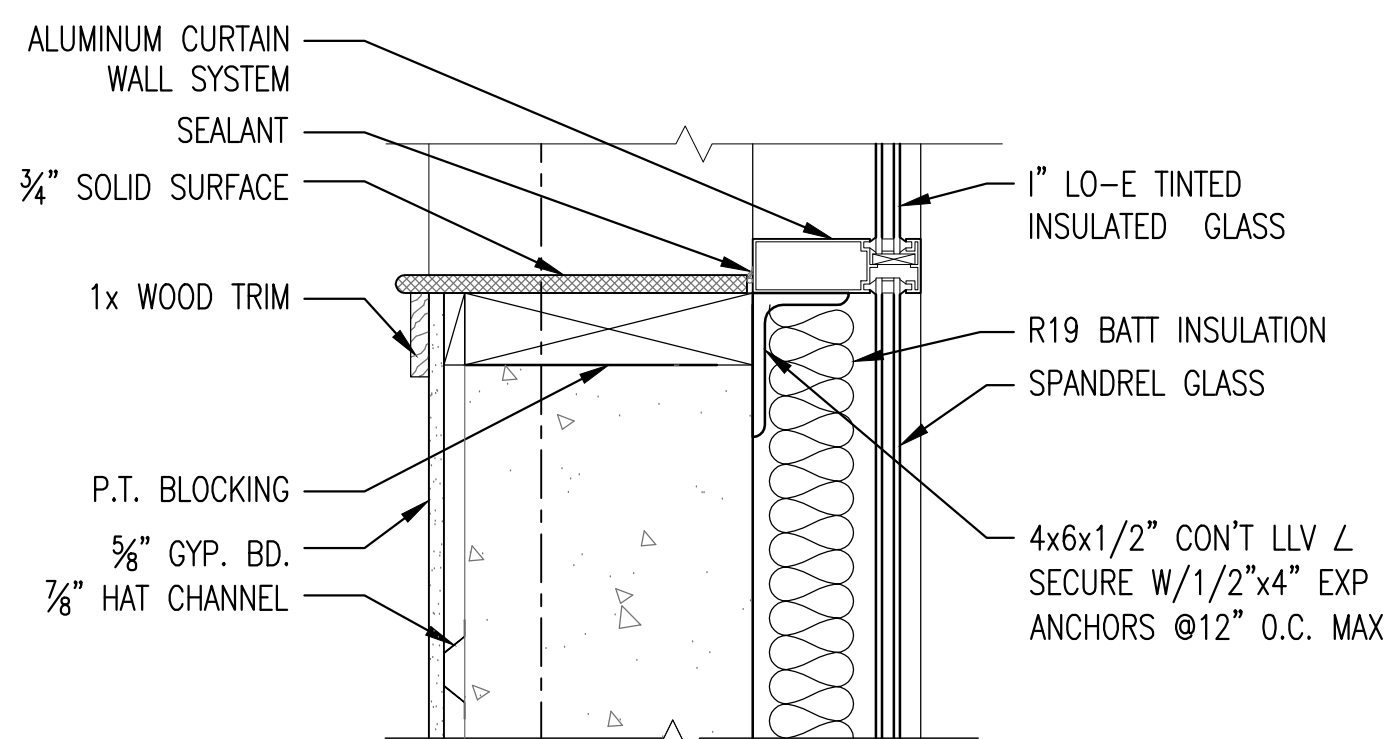
4 TYPICAL SHELF ANGLE
A504 1 1/2" = 1'-0"



11 PARAPET AT CURTAINWALL
A504 1 1/2" = 1'-0"

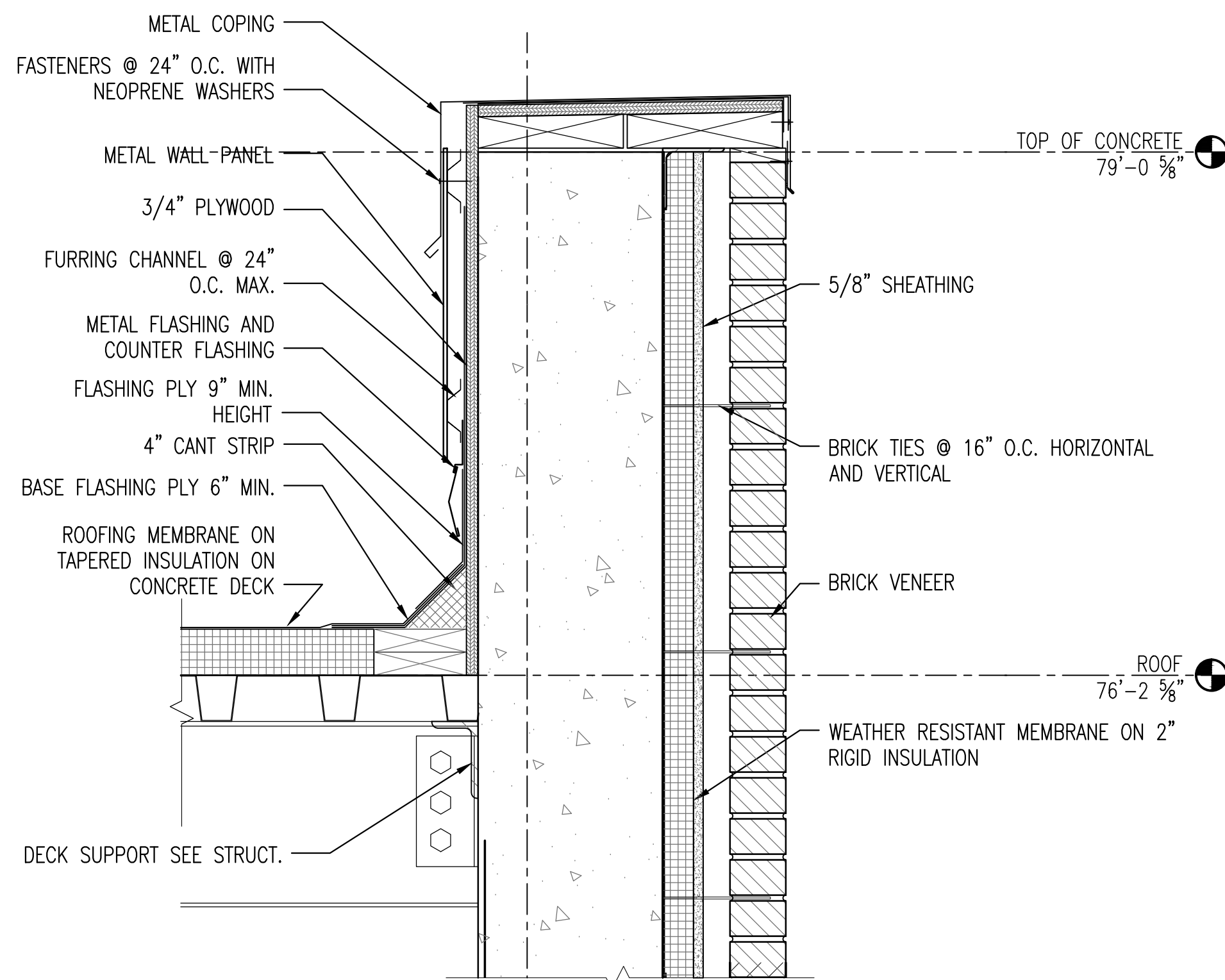


7 WINDOW HEAD AT CURTAINWALL
A504 1 1/2" = 1'-0"

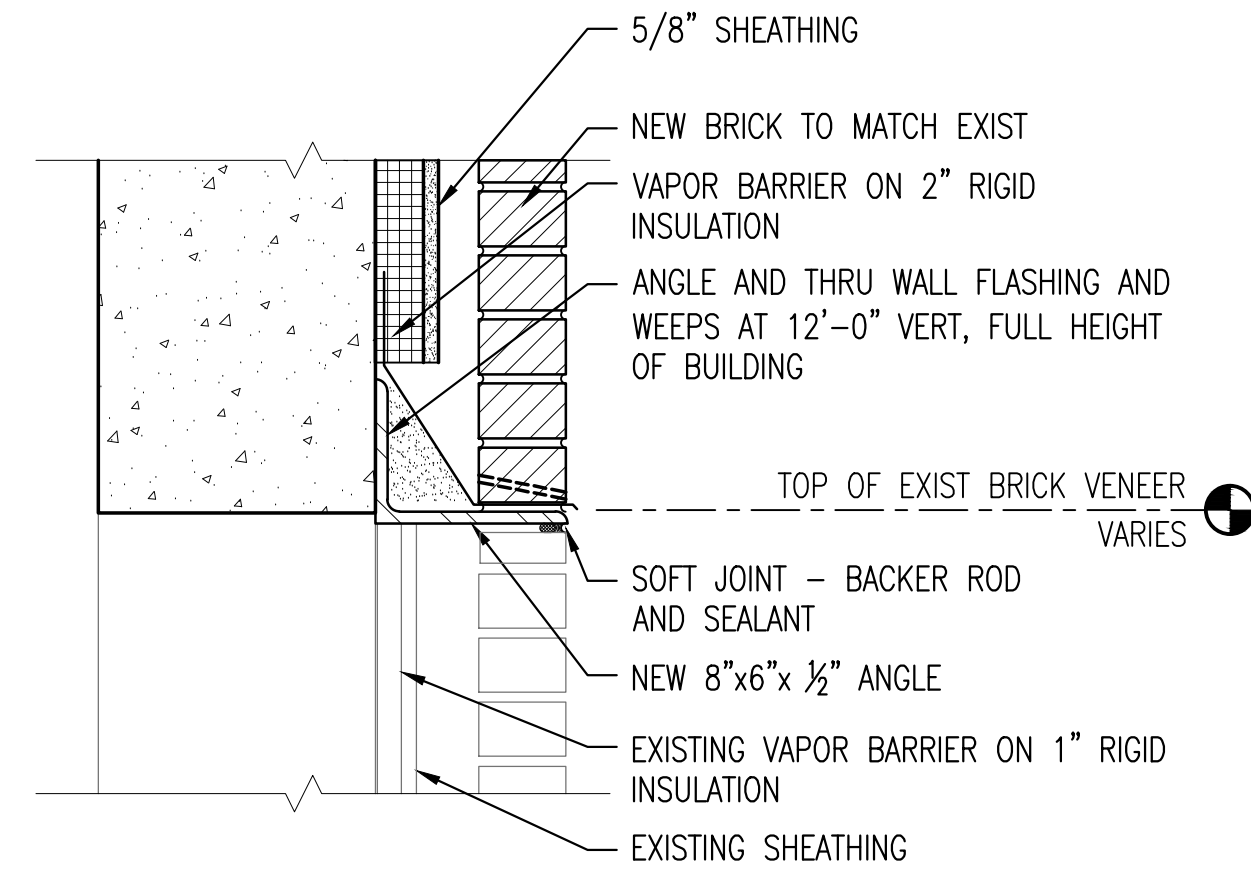


3 SILL DETAIL AT CURTAINWALL
A504 1 1/2" = 1'-0"

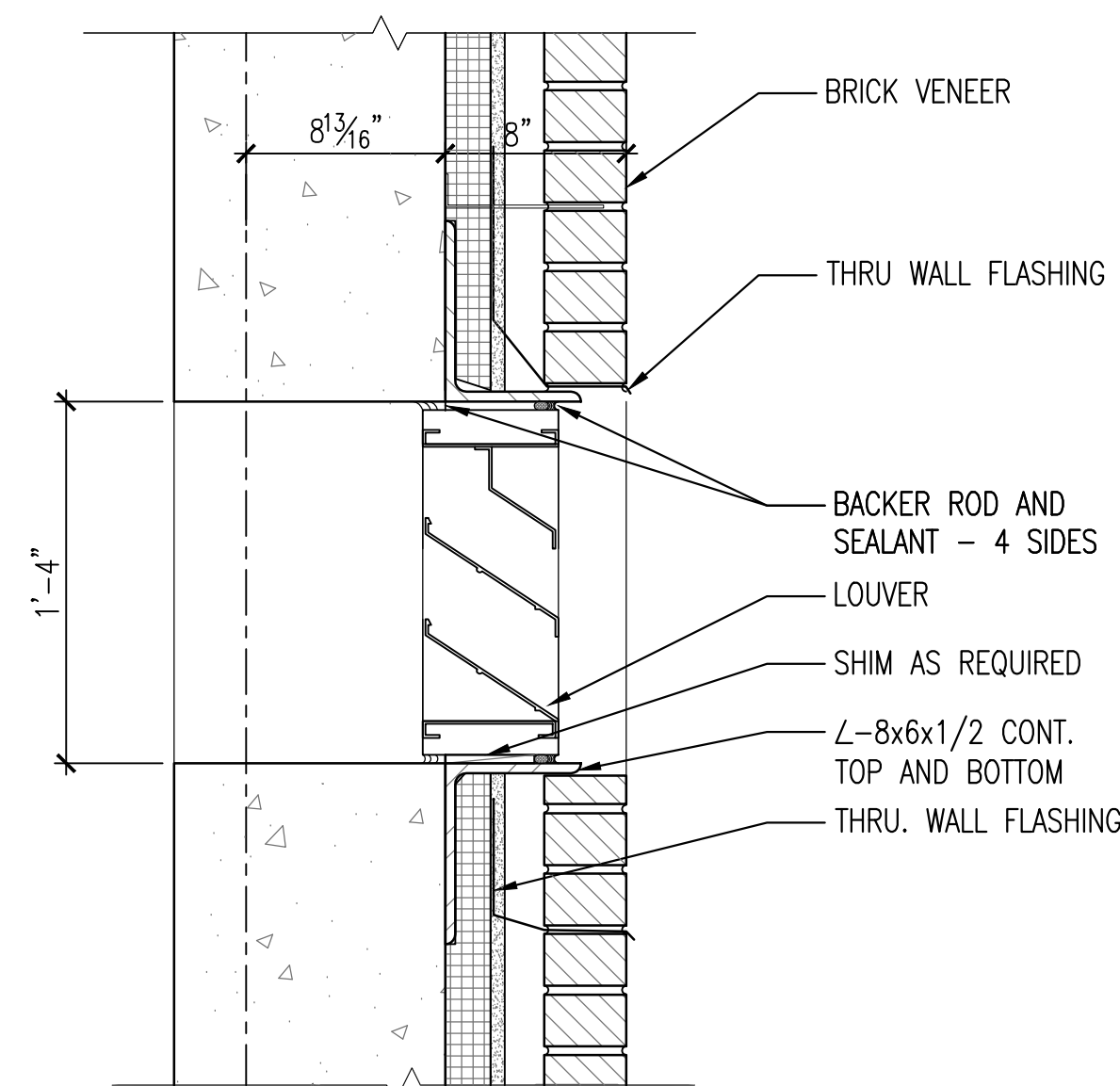
NOTE: PROVIDE REVISED OR ADD'L ANCHORS AS REQ'D BY CURTAINWALL MANUF.



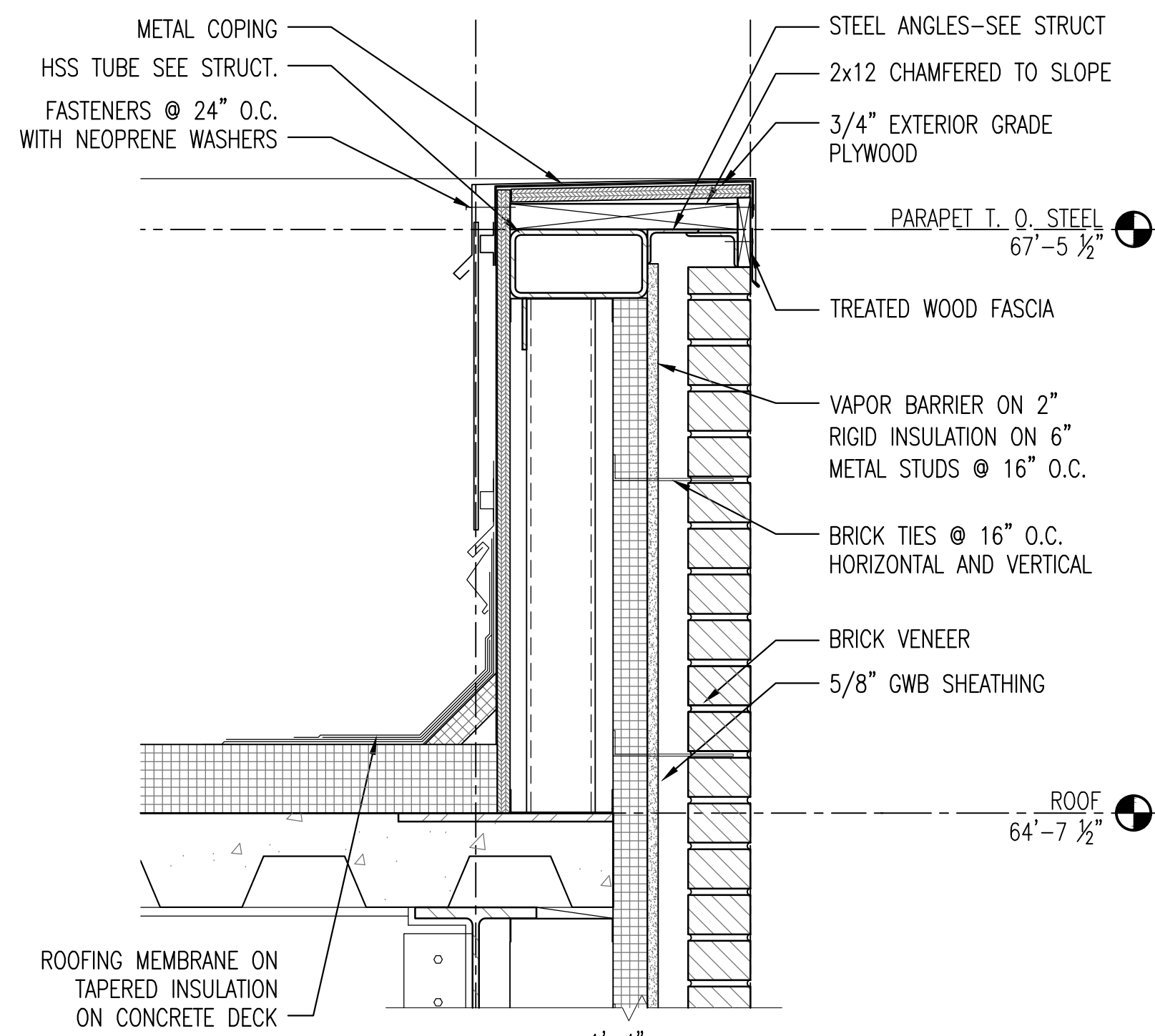
10 PARAPET AT ELEVATOR TOWER
A504 1 1/2" = 1'-0"



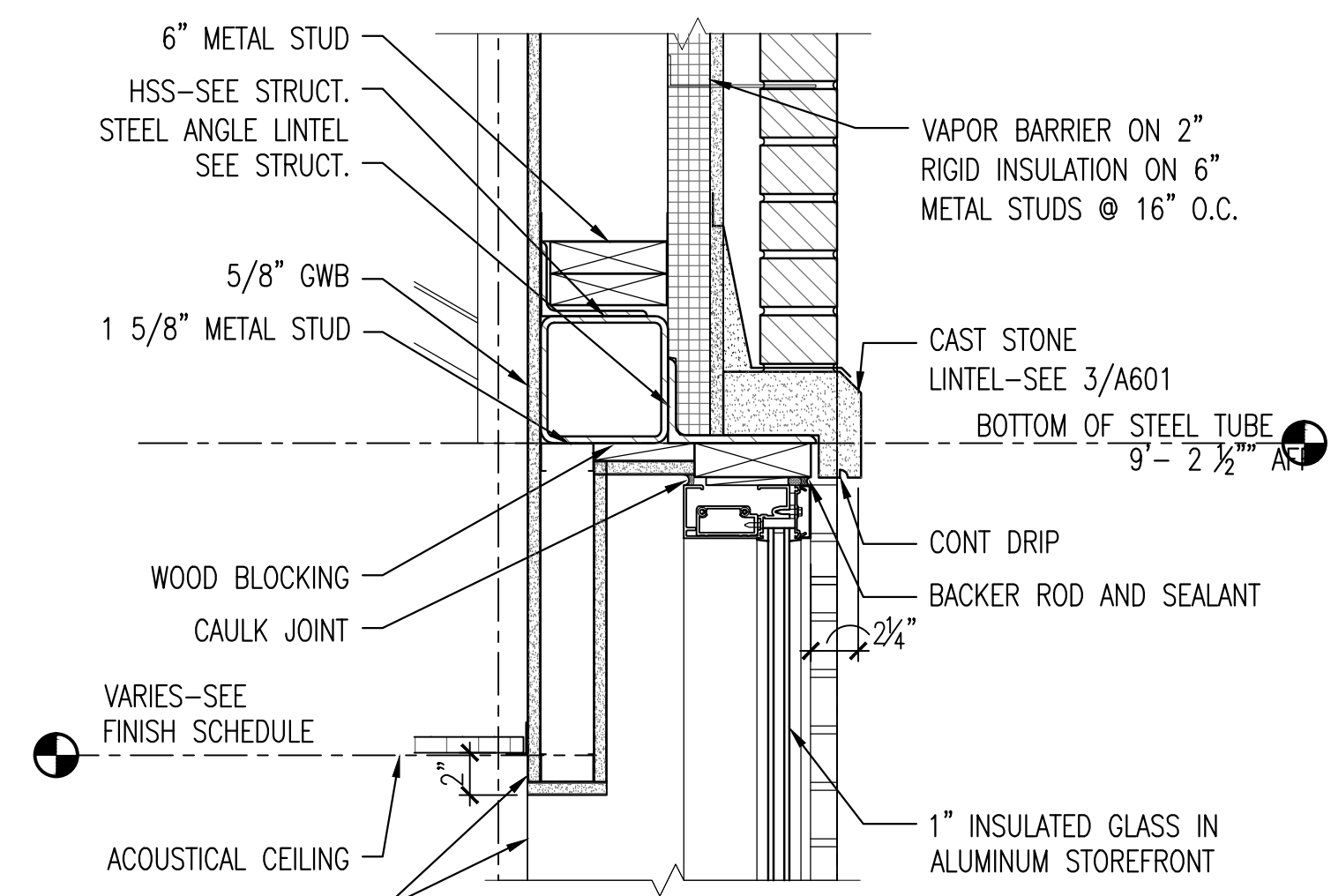
6 JOINT DETAIL AT VERTICAL EXPANSION
A504 1 1/2" = 1'-0"



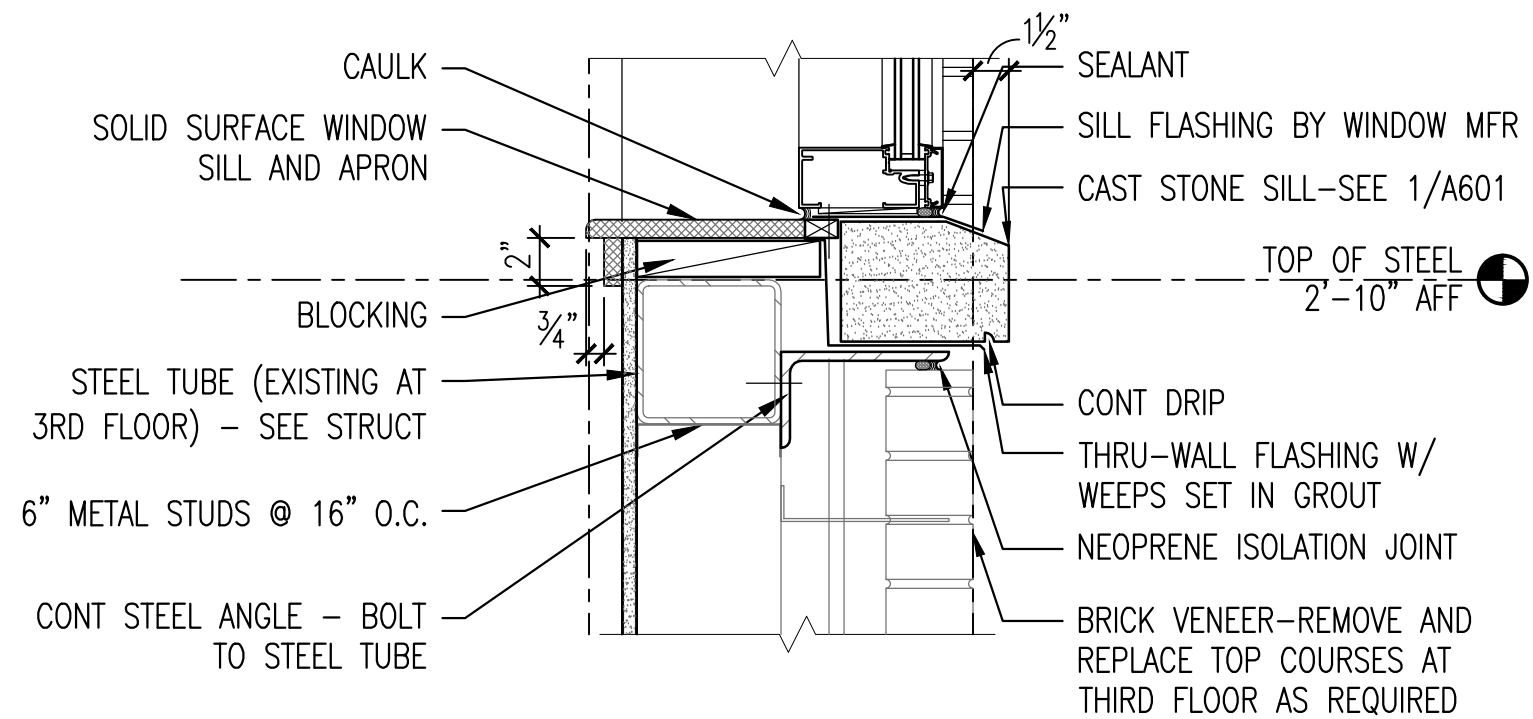
2 DETAIL AT LOUVER
A504 1 1/2" = 1'-0"



9 TYPICAL PARAPET
A504 1 1/2" = 1'-0"



5 HEAD DETAIL AT STOREFRONT
A504 1 1/2" = 1'-0"



1 SILL DETAIL AT STOREFRONT
DETAIL AT THIRD FLOOR-FOURTH FLOOR SIMILAR
A504 1 1/2" = 1'-0"

FINAL SUBMITTAL

		CONSULTANTS:			ARCHITECT:  590 Means Street NW, Suite 200 Atlanta, GA 30318 404.214.9774	Drawing Title: SECTION DETAILS		Project Title: EXPAND RADIOLOGY AND SPS OVERTON BROOKS VAMC		Project Number: 667-083		OFFICE OF CONSTRUCTION AND FACILITIES MANAGEMENT				
						Approved: Project Director		Location: SHREVEPORT, LA		Building Number: 1			Drawing Number: A504			
Revisions:		Date						Date: 04-17-2015		Checked: XX		Drawn: XX		Dwg. 44 of 160		VA  U.S. Department of Veterans Affairs