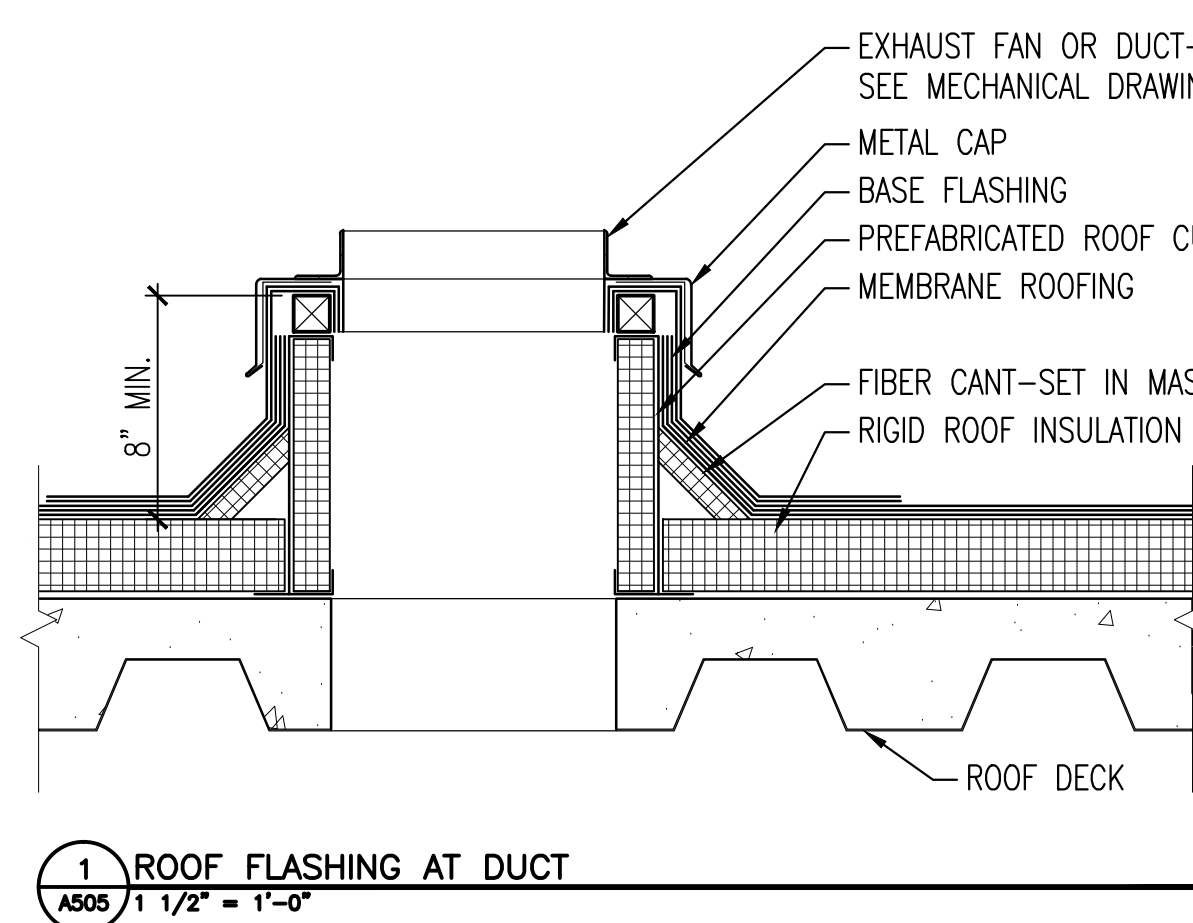
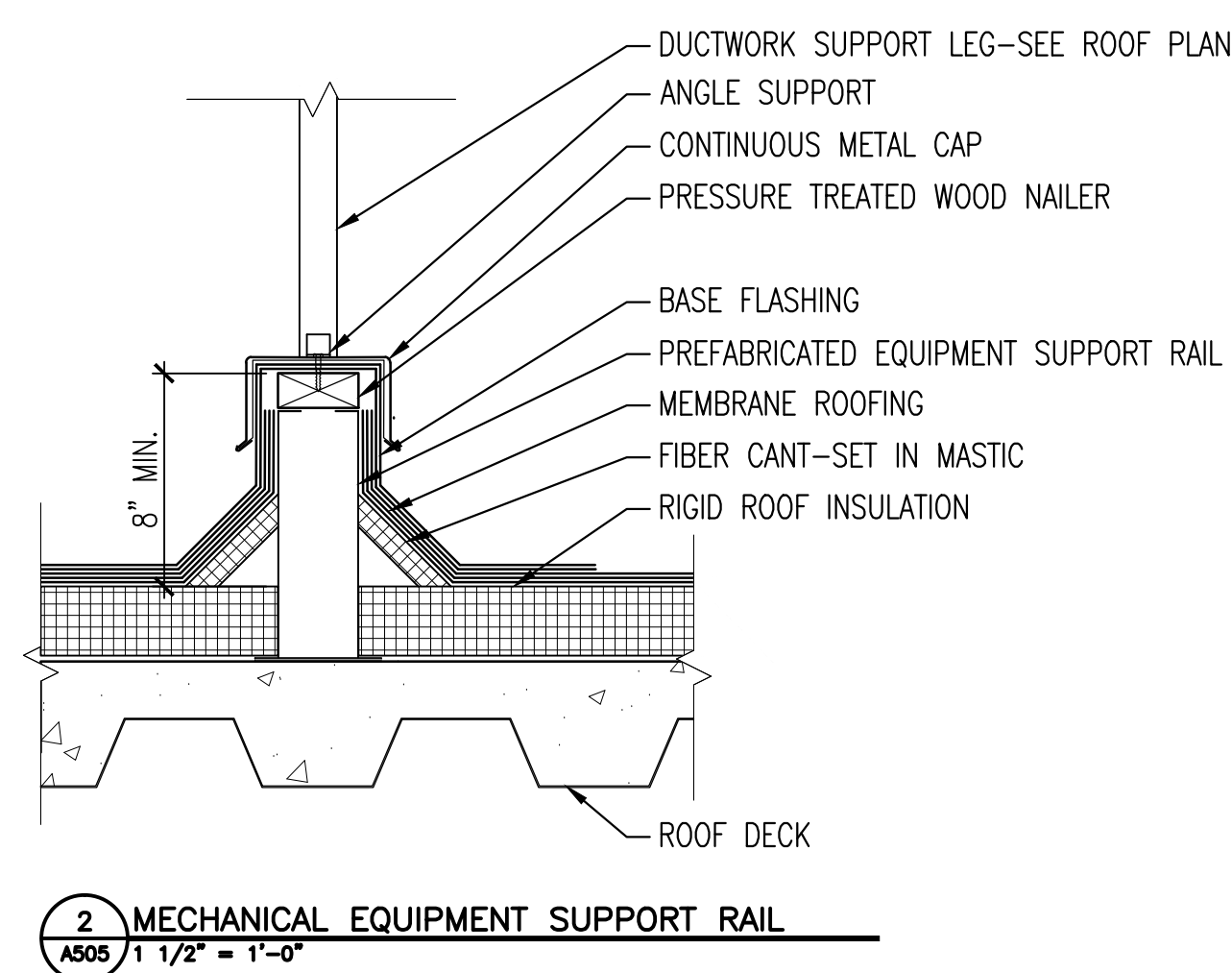
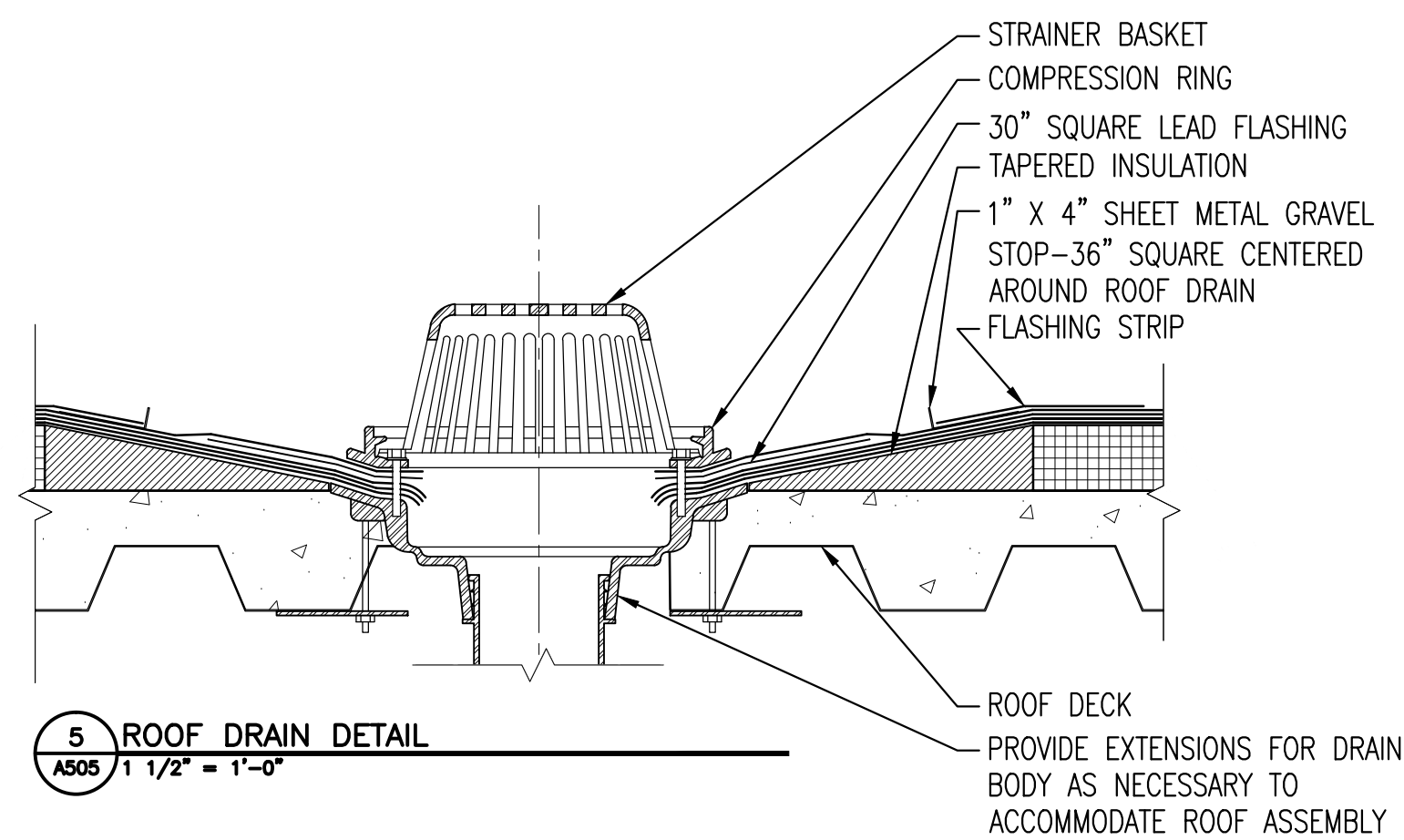
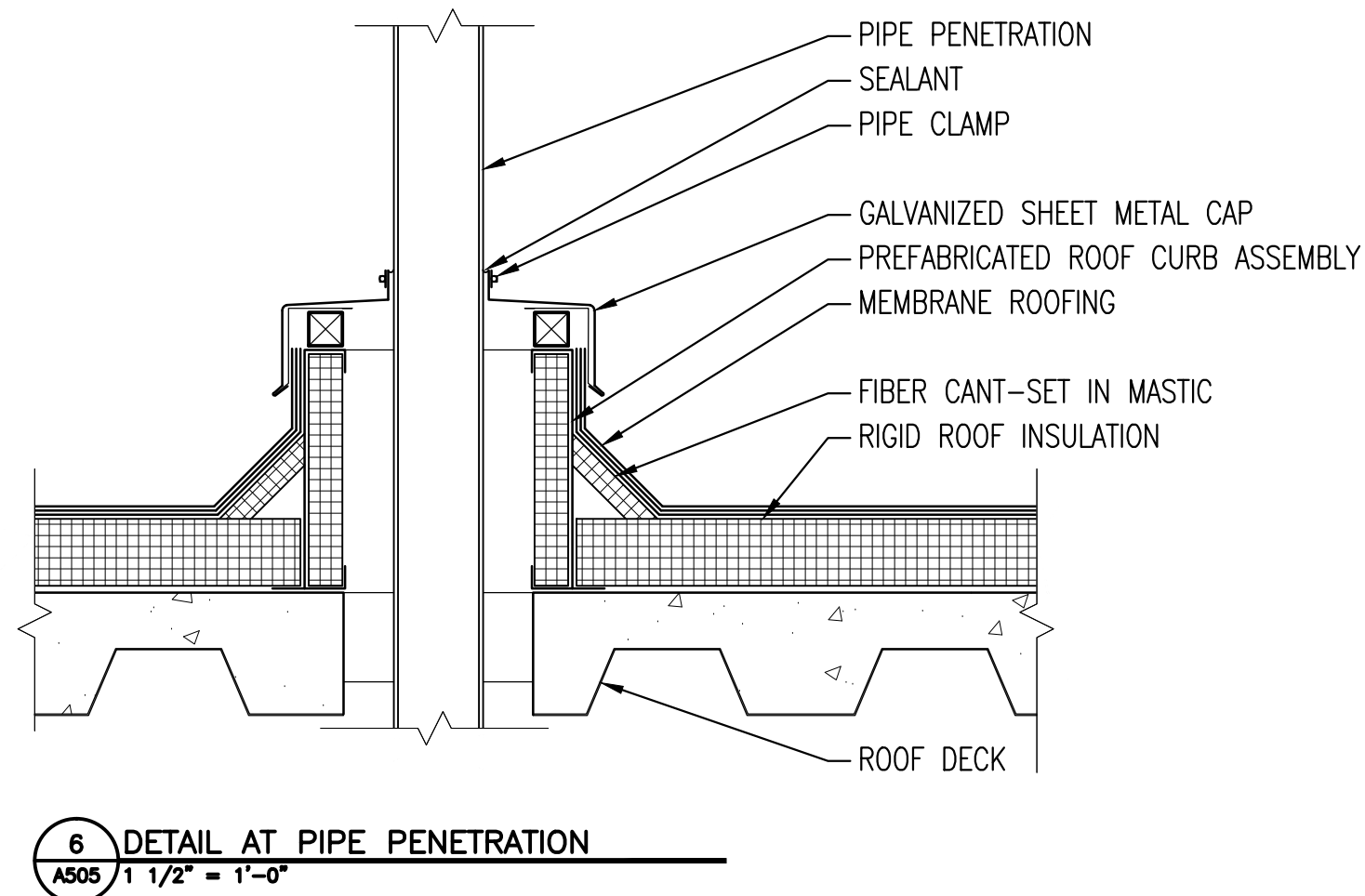
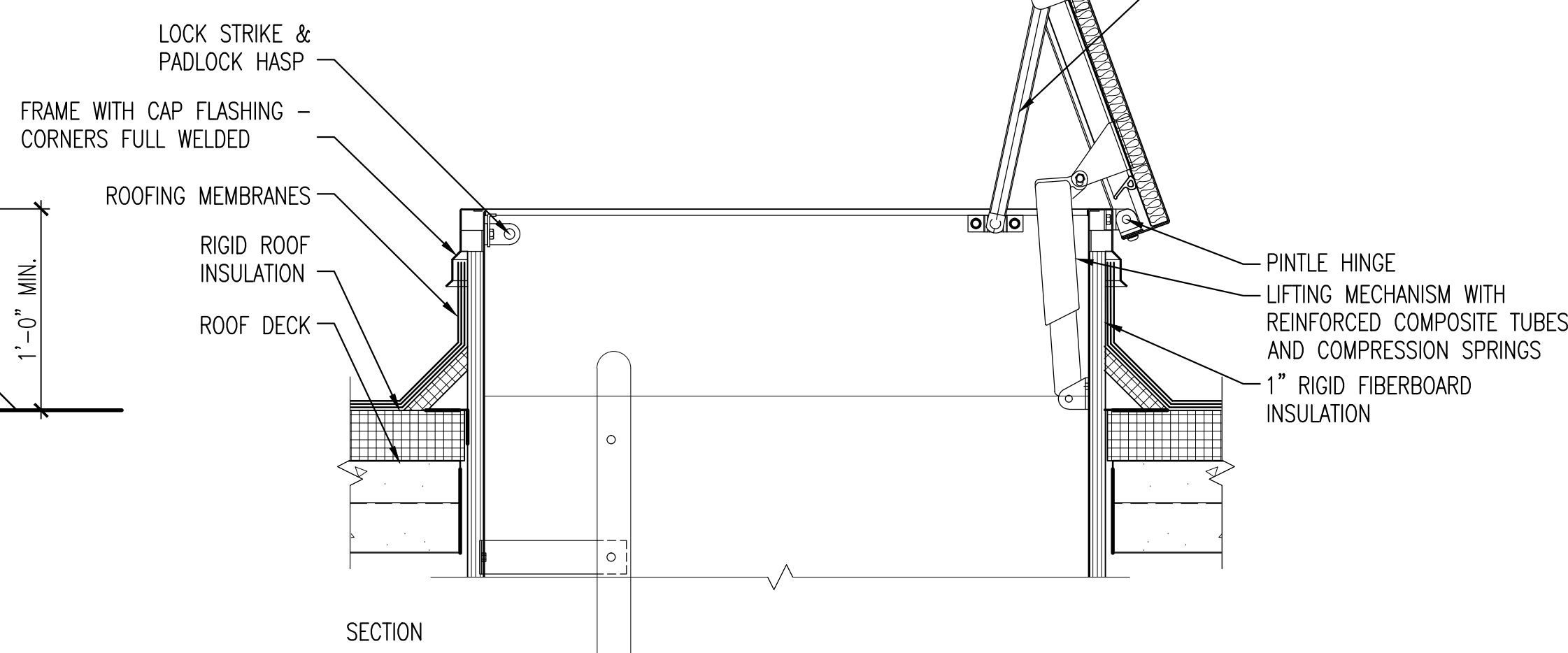
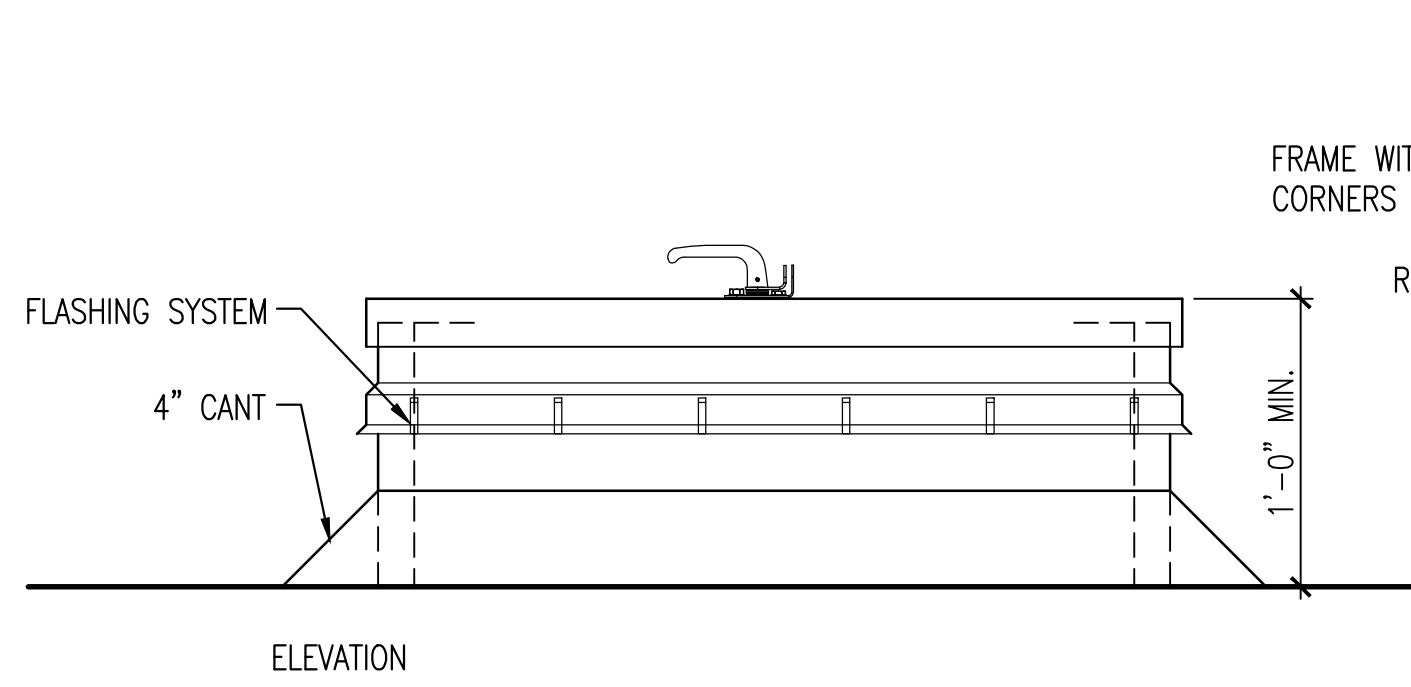
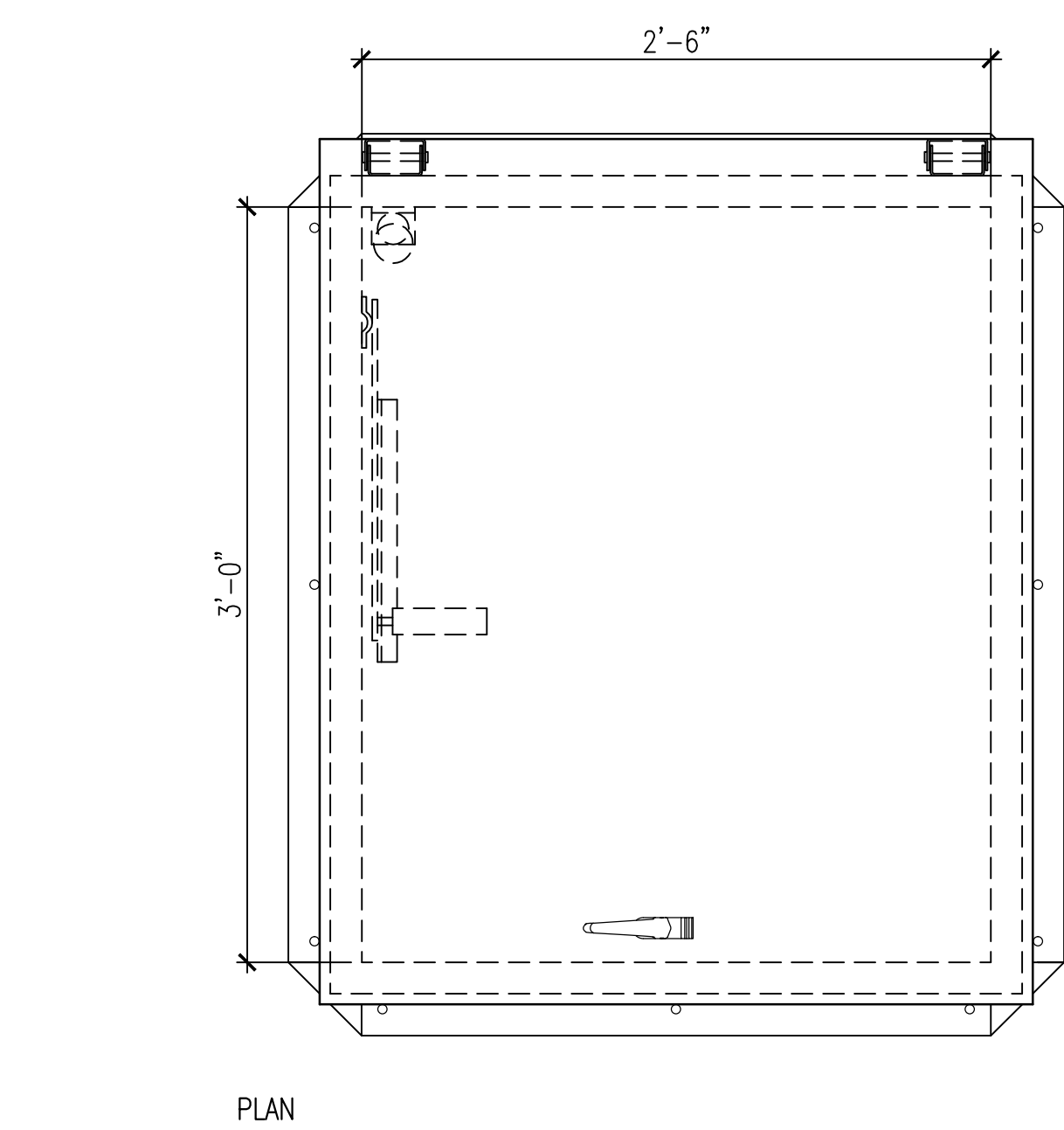
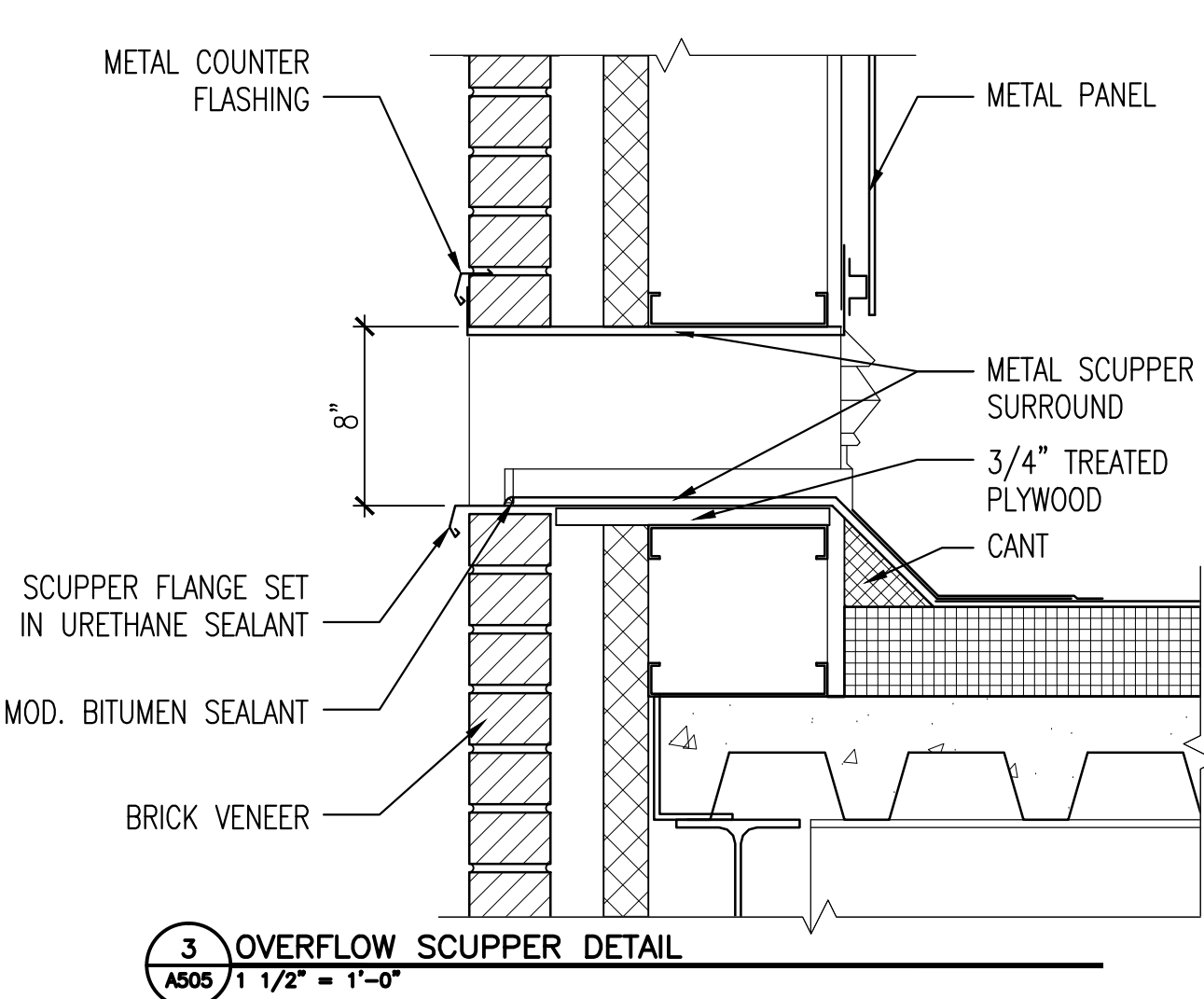
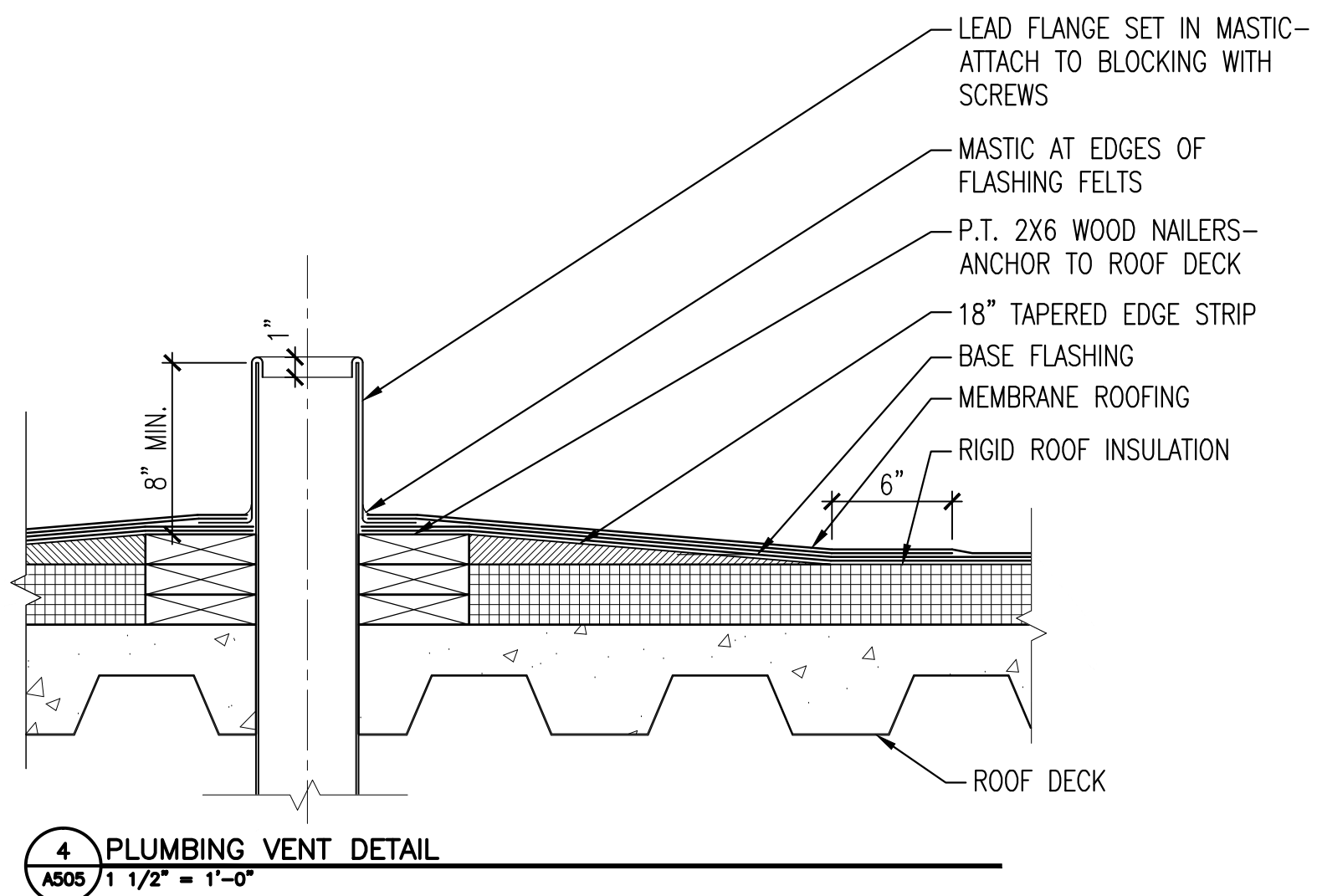
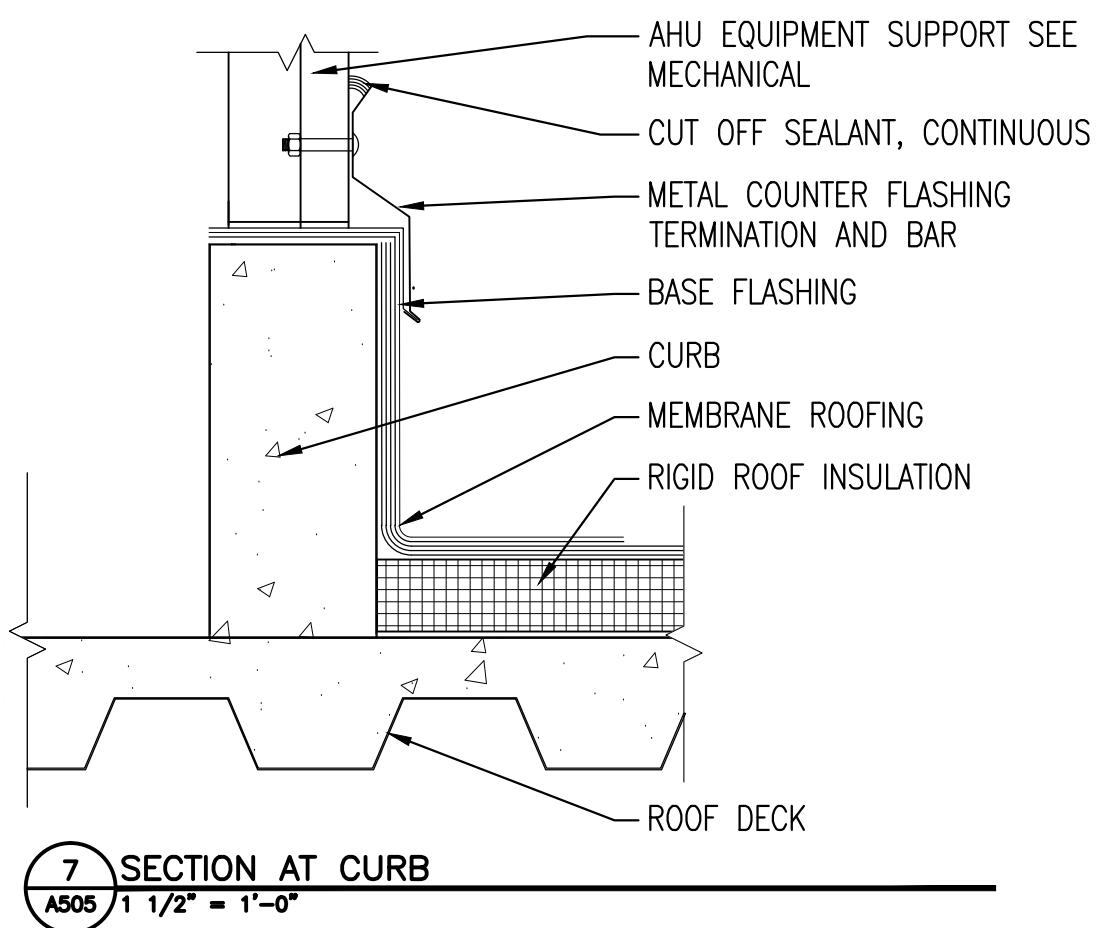
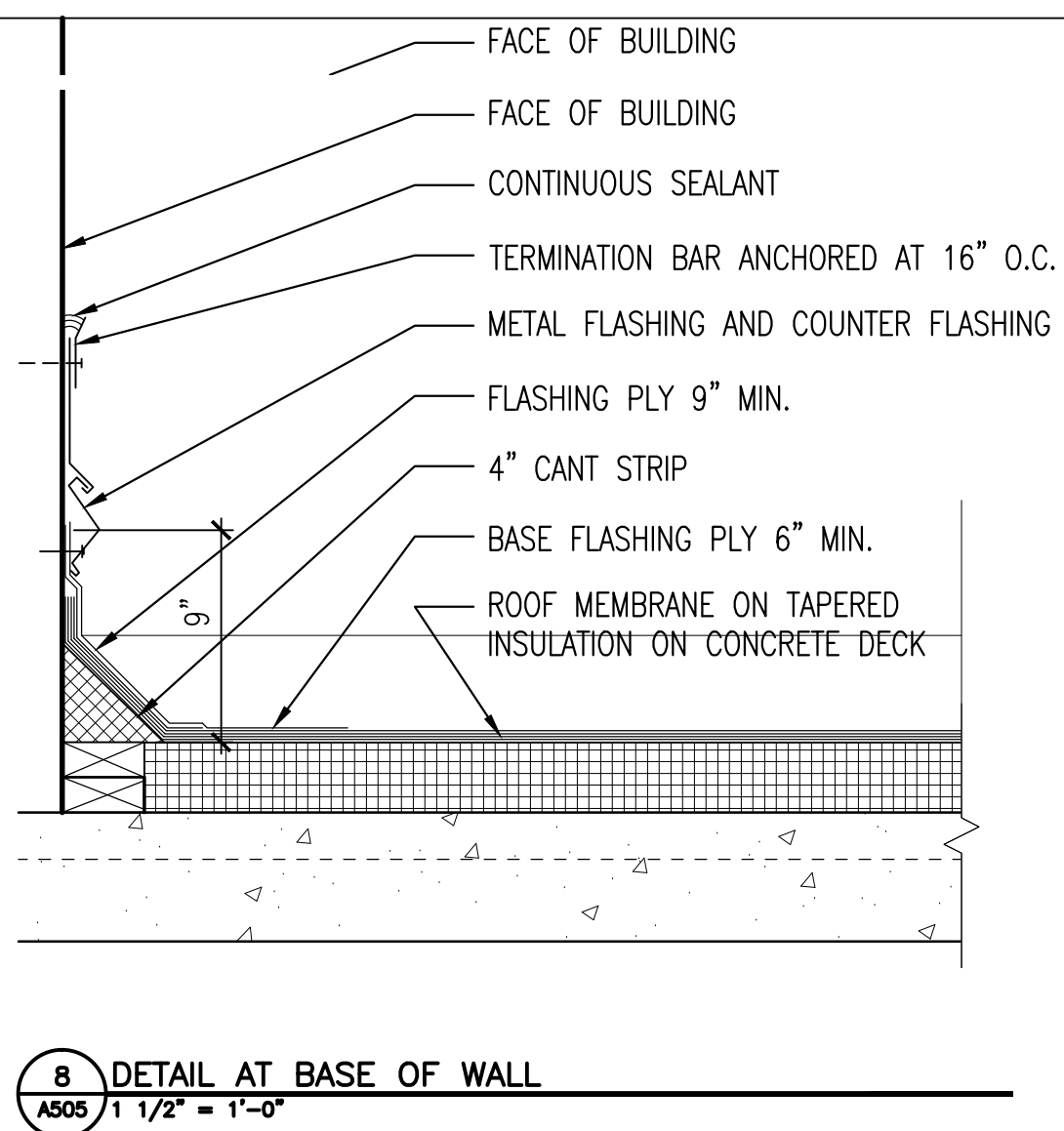
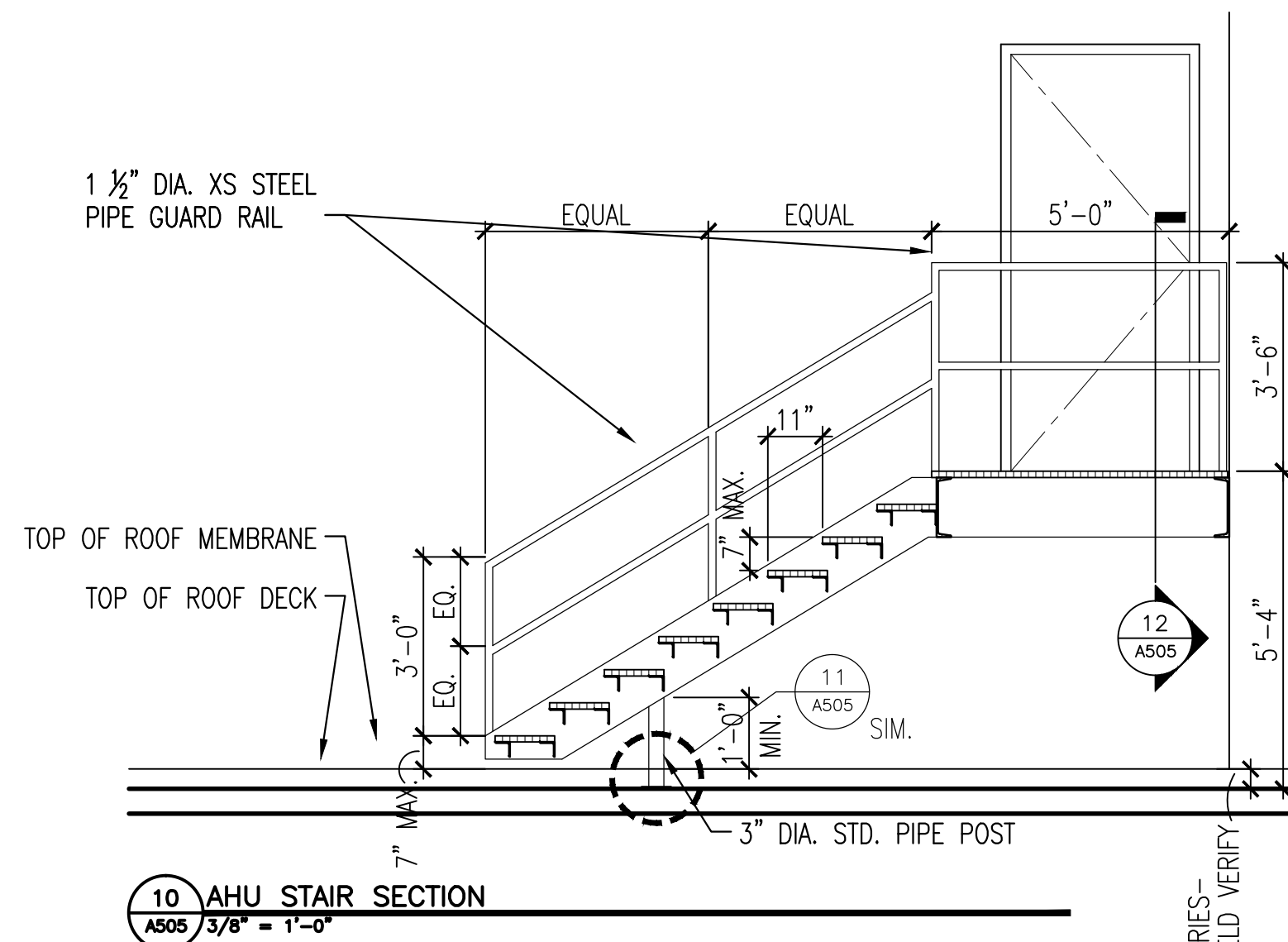
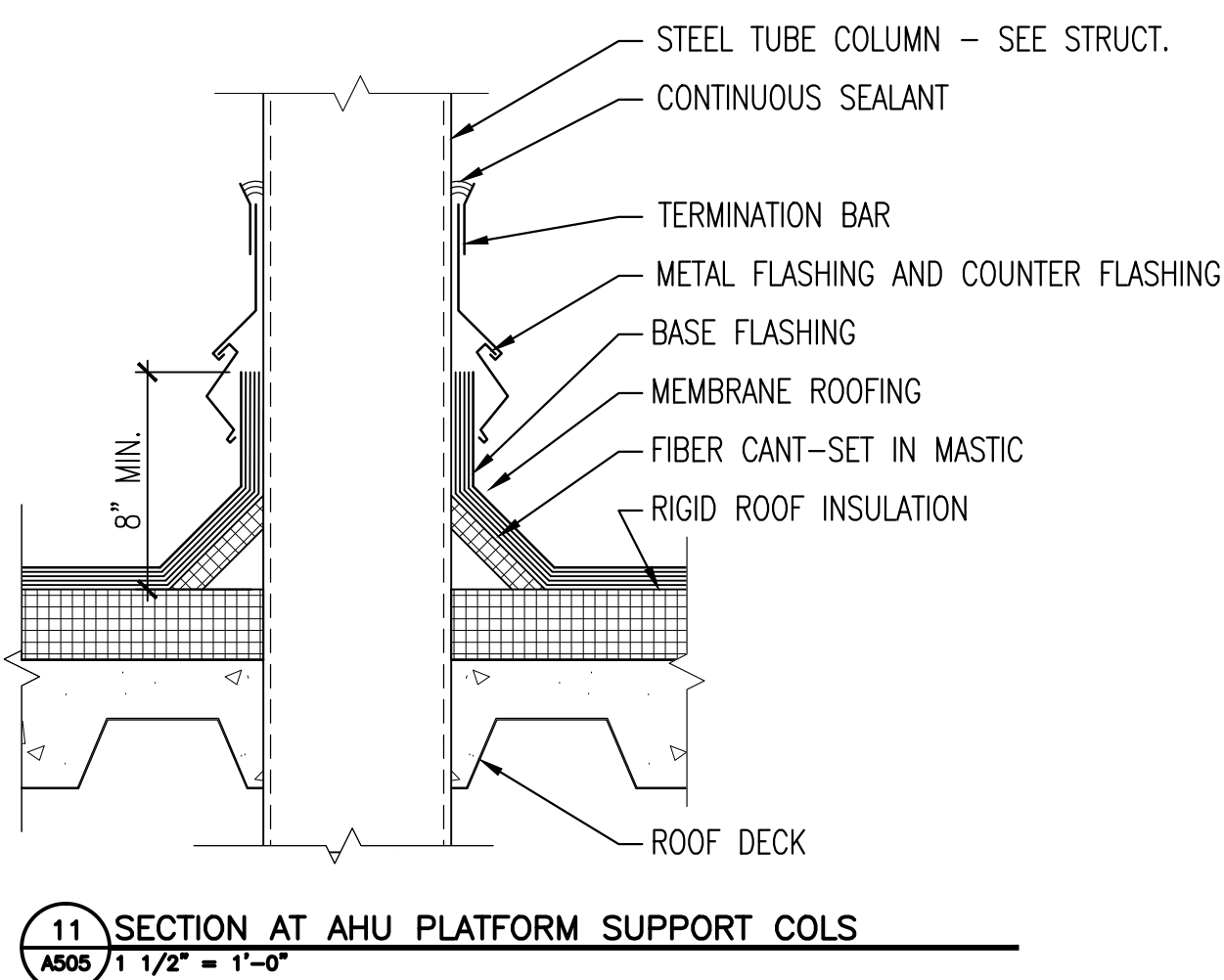
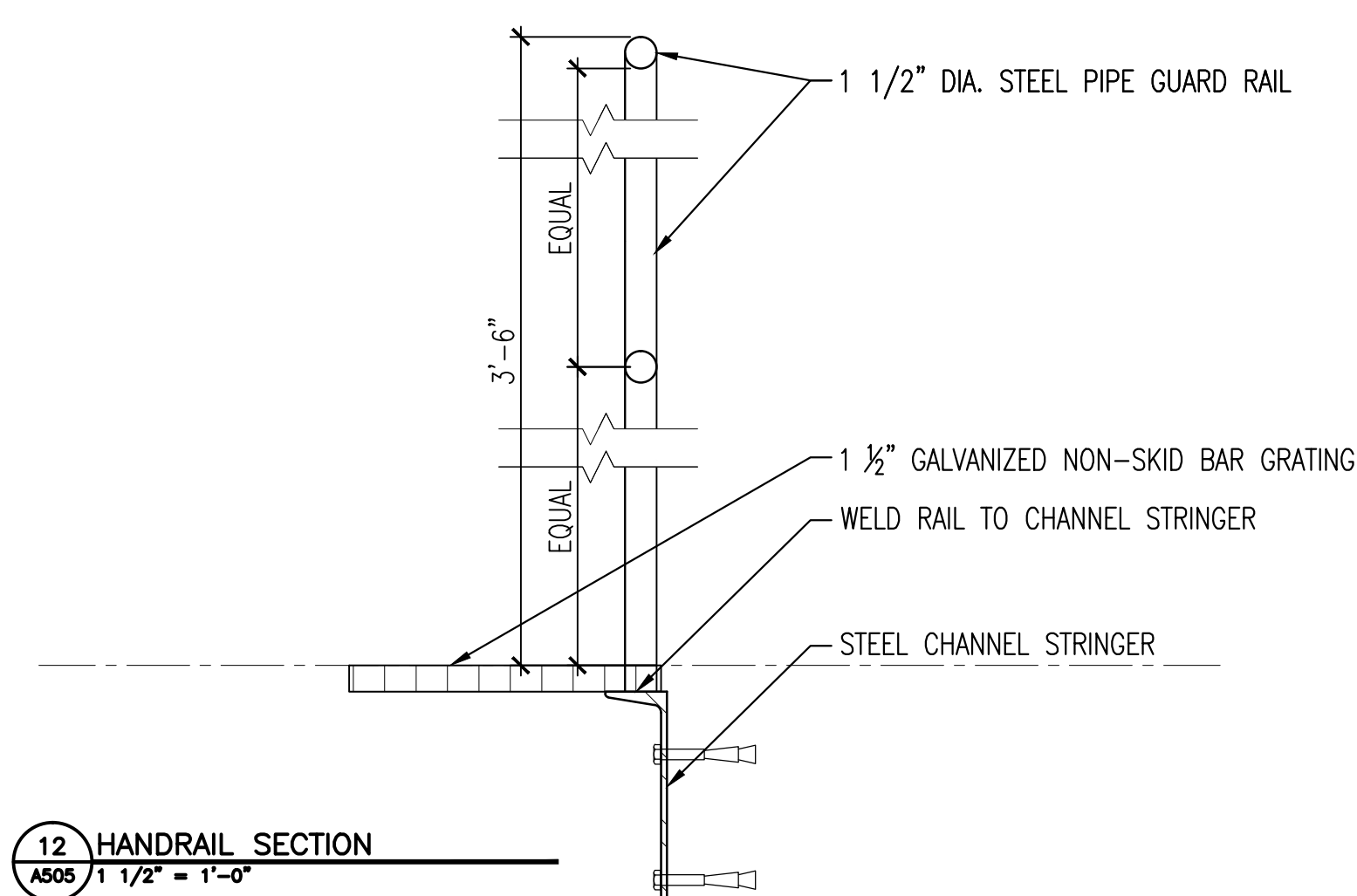
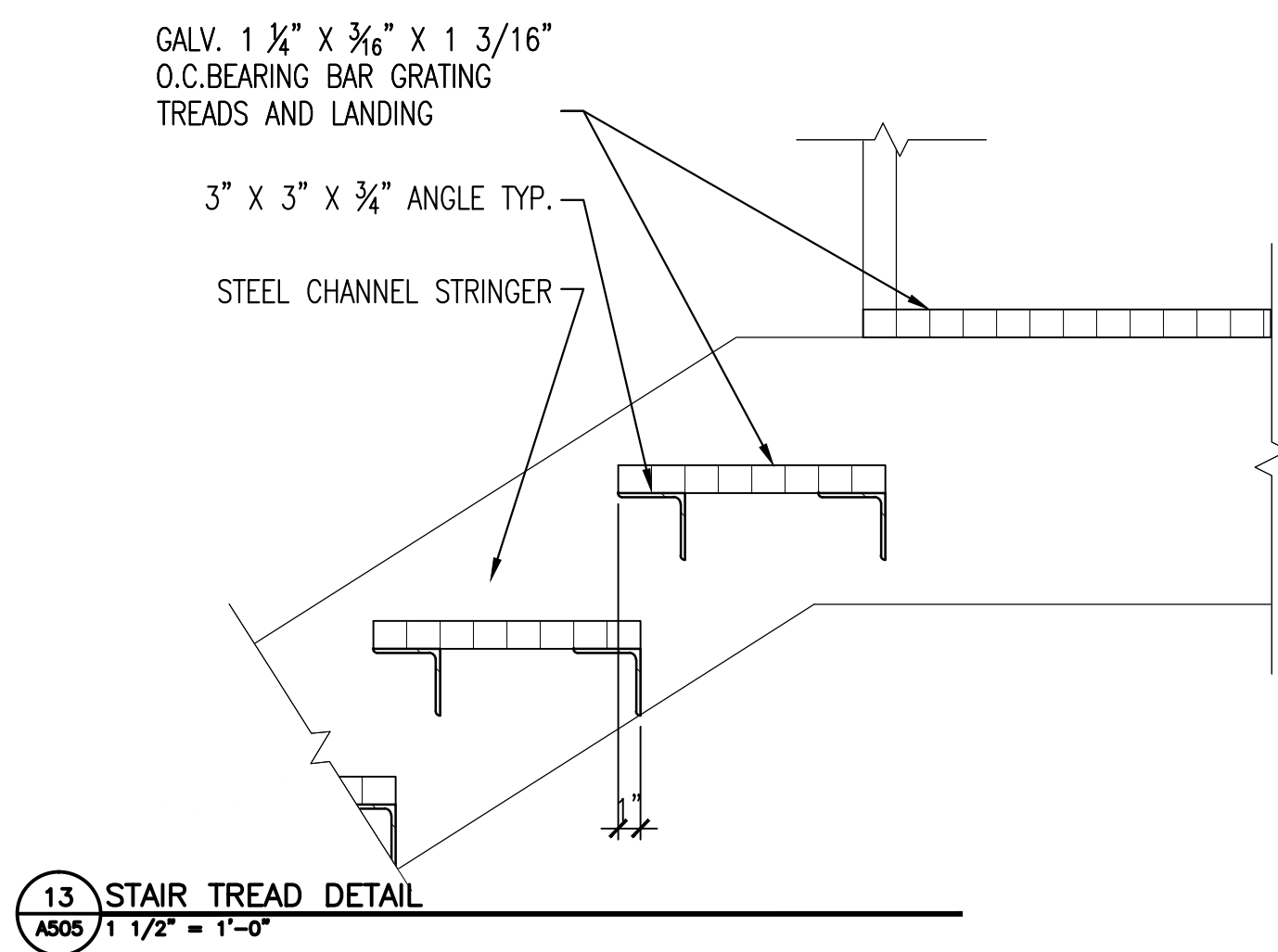


Drawing File: \\Projects\1313 Renovate Radiology & SPS - VA Shreveport\3 1313 Drawings\RENOVATE RADIOLOGY & SPS - VA SHREVEPORT\Sheets\A505 ROOF DETAILS.dwg  
Plotted by: hamed  
Plotted Date: May 20, 2015 4:00pm

A three inches = one foot  
B one and one-half inches = one foot  
C one inch = one foot  
D three-quarters inch = one foot  
E one-half inch = one foot  
F three-eighths inch = one foot  
G one-quarter inch = one foot  
H one-eighth inch = one foot



FINAL SUBMITTAL

Revisions:	Date:	CONSULTANTS:		ARCHITECT:  590 Means Street NW, Suite 200 Atlanta, GA 30318 404.214.9774	Drawing Title: <b>ROOF DETAILS</b>	Project Title: <b>EXPAND RADIOLOGY AND SPS OVERTON BROOKS VAMC</b>	Project Number: <b>667-083</b>	Office of CONSTRUCTION AND FACILITIES MANAGEMENT
					Approved: Project Director	Location: <b>SHREVEPORT, LA</b>	Building Number: <b>1</b>	 U.S. Department of Veterans Affairs
					Date: 04-17-2015	Checked: XX	Drawn: XX	