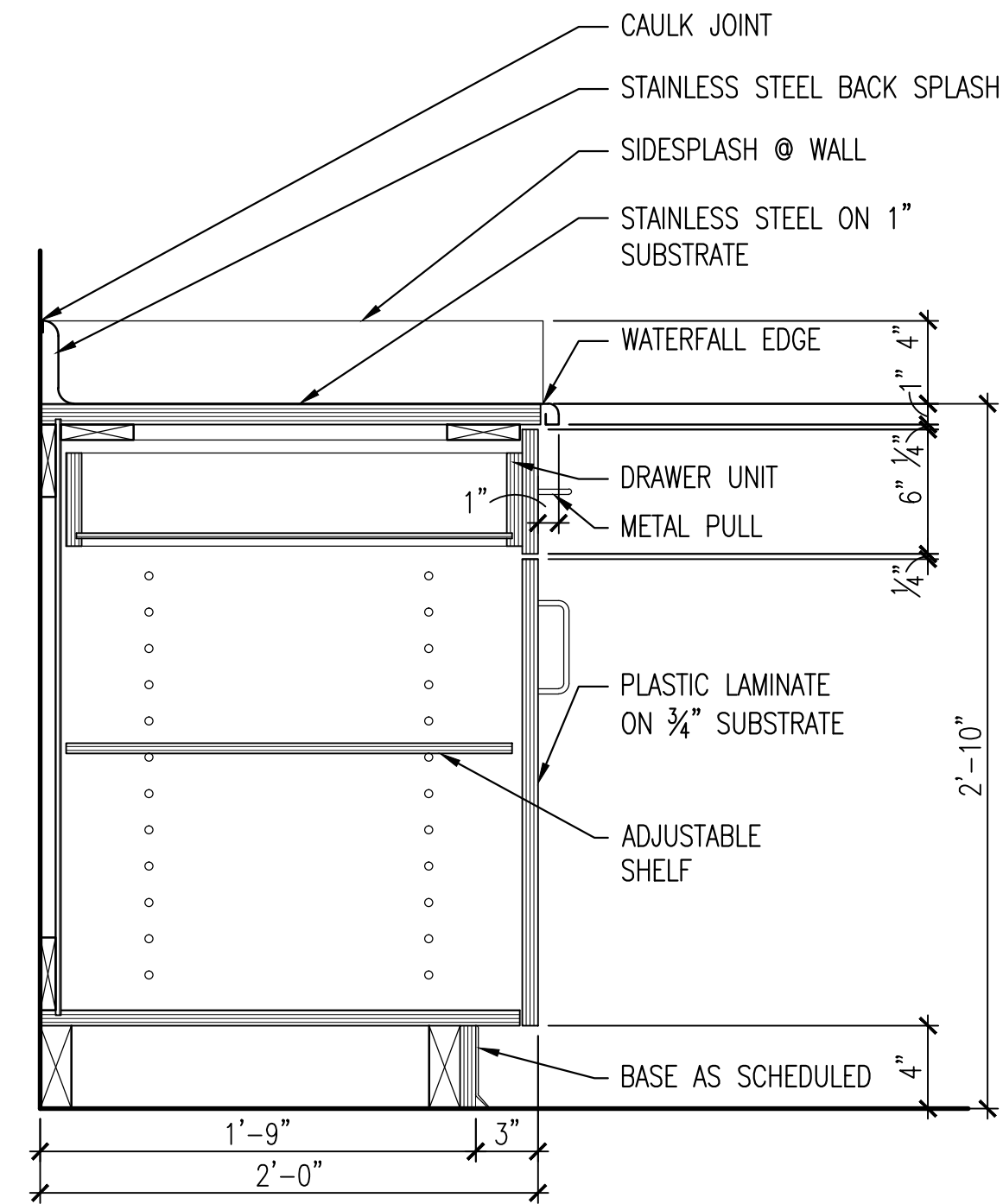
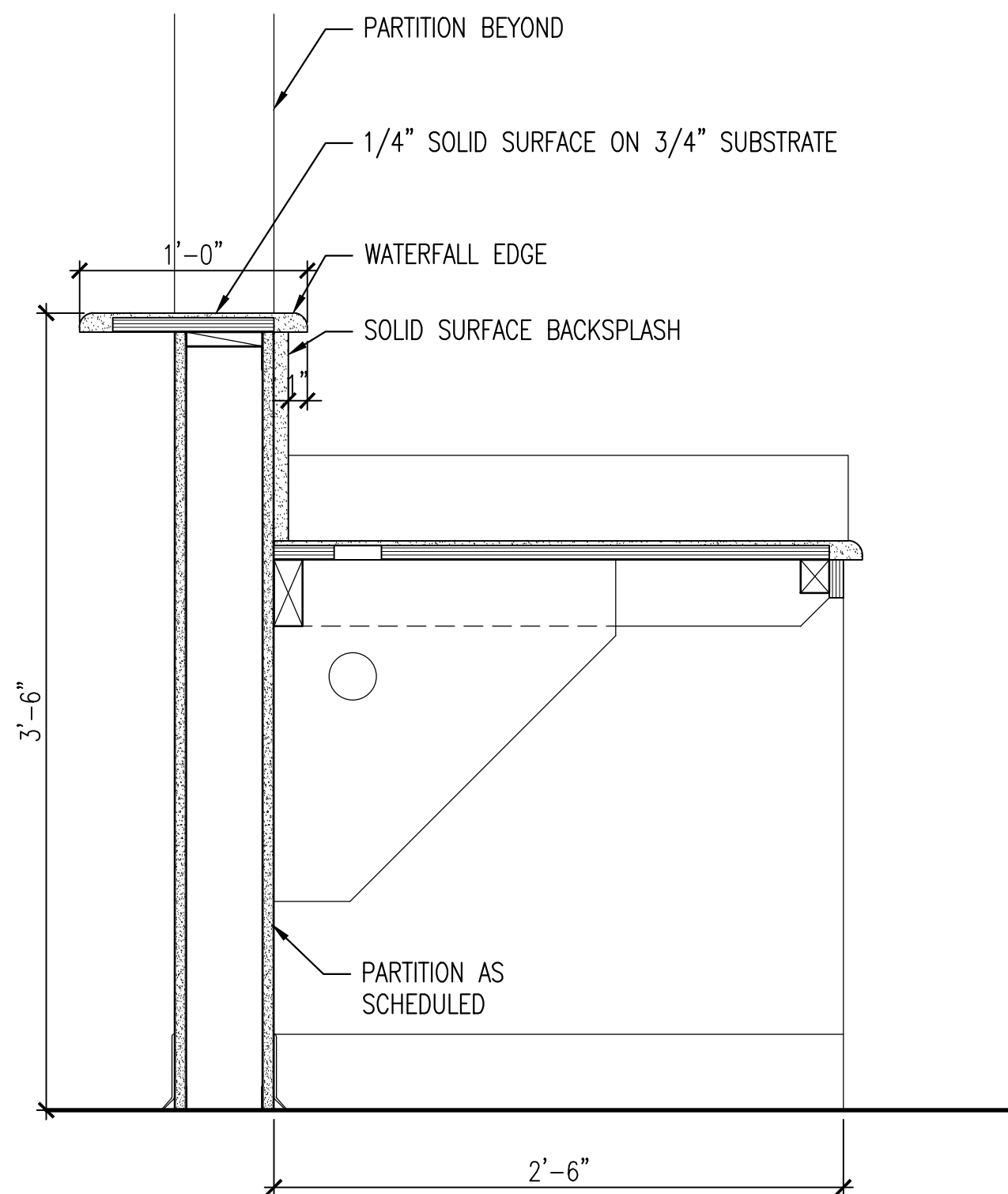


Drawing File: \\Projects\1313 Renovate Radiology & SPS - VA Shreveport\3 1313 Drawings\Renovate Radiology & SPS - VA Shreveport\Sheets\A507 MILLWORK DETAILS.dwg  
Plotted by: hamed  
Plotted Date: May 20, 2015 1:40 pm

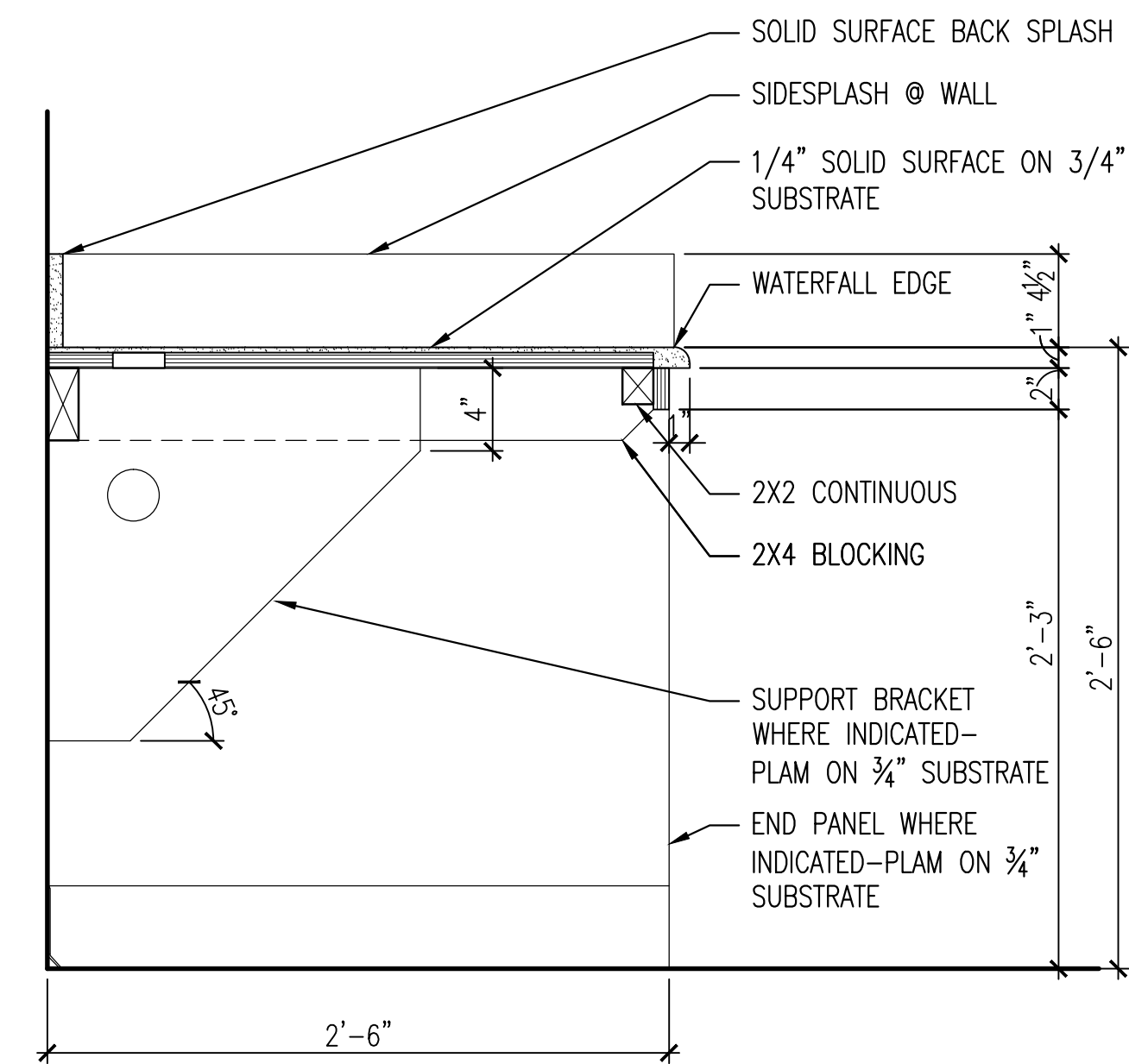
A three inches = one foot  
B one and one-half inches = one foot  
C one inch = one foot  
D three-quarters inch = one foot  
E one-half inch = one foot  
F three-eighths inch = one foot  
G one-quarter inch = one foot  
H one-eighth inch = one foot



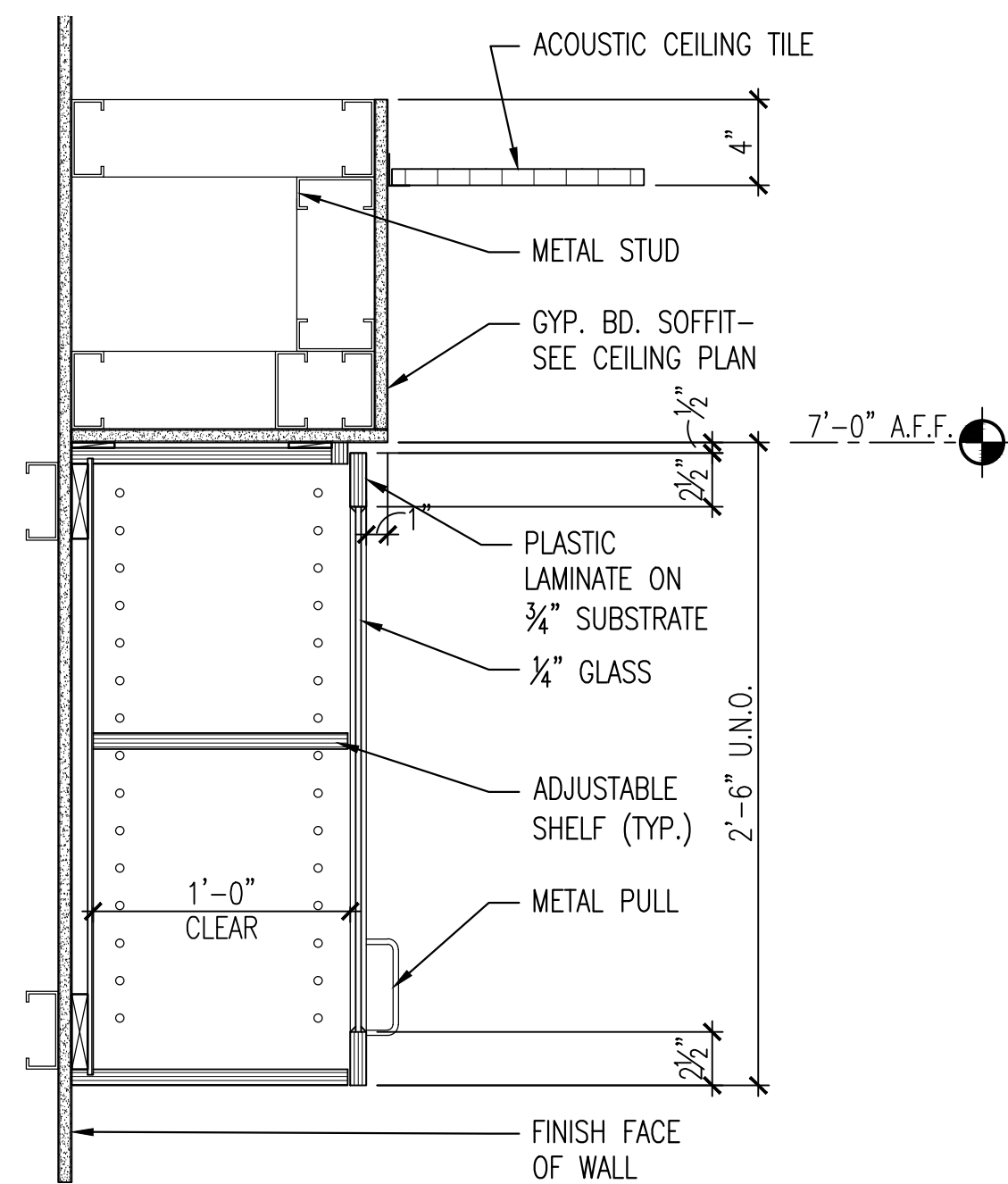
10 STAINLESS STEEL COUNTERTOP  
A507 1 1/2" = 1'-0"



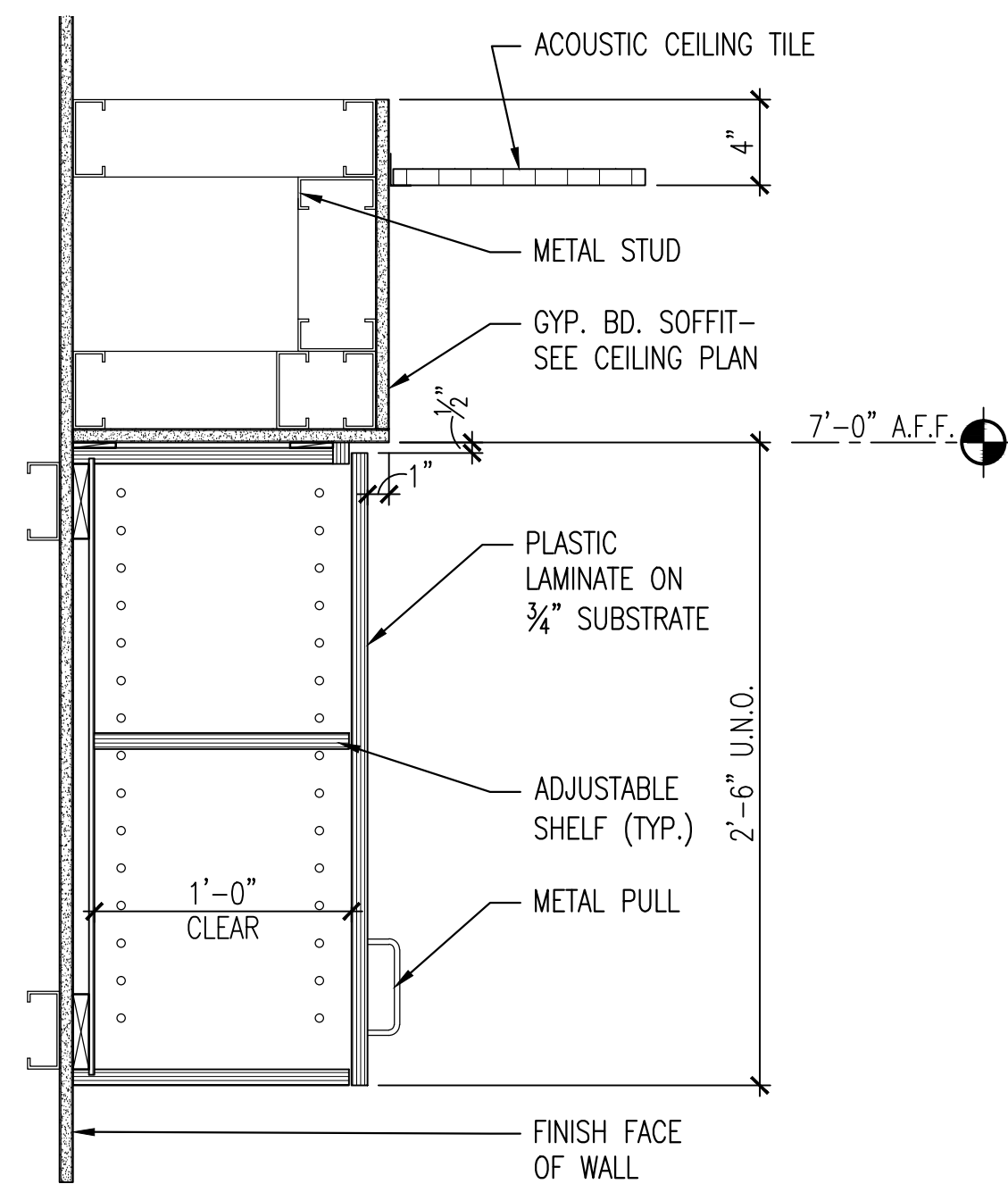
9 TRANSACTION TOP DETAIL  
A507 1 1/2" = 1'-0"



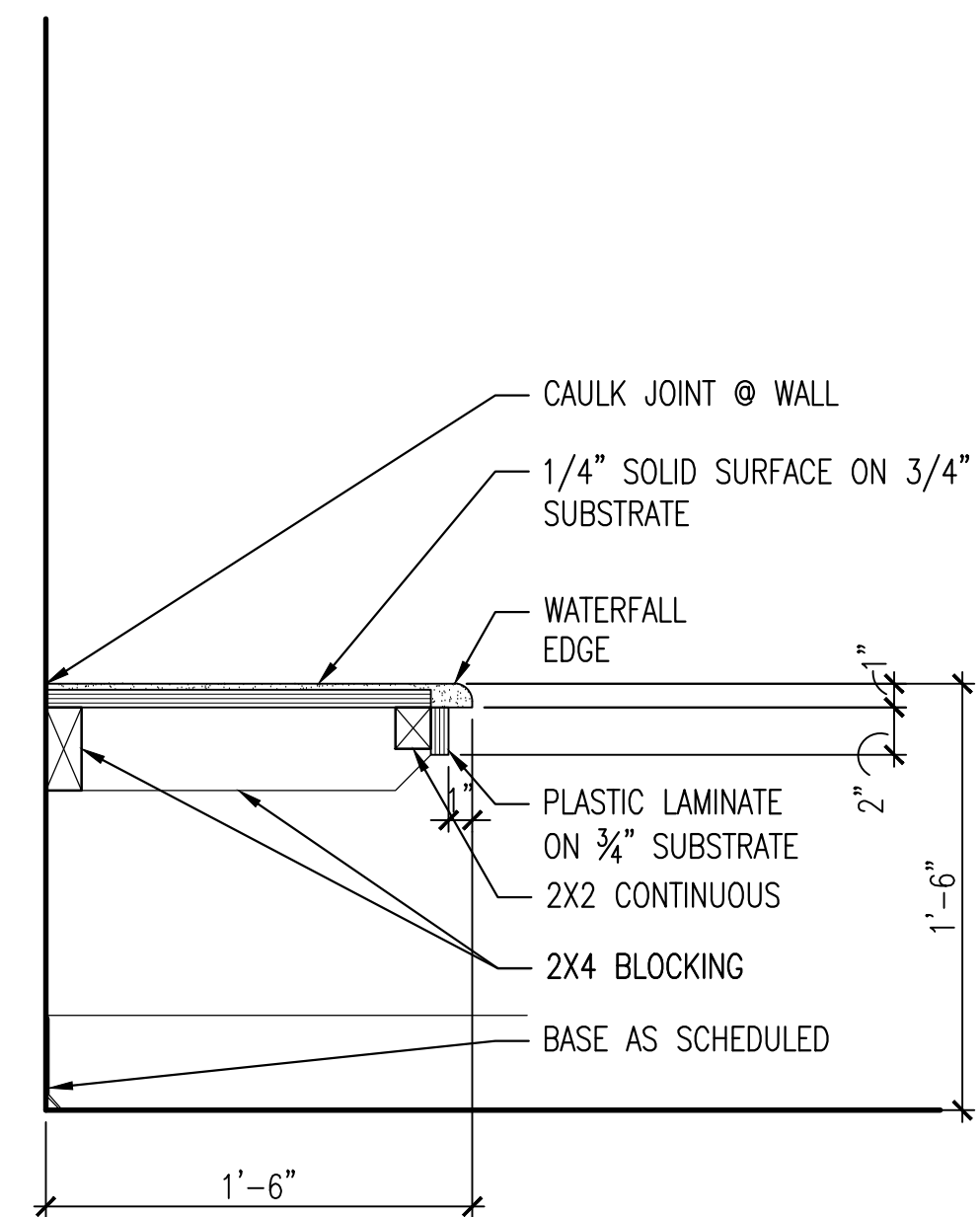
8 KNEESPACE DETAIL  
A507 1 1/2" = 1'-0"



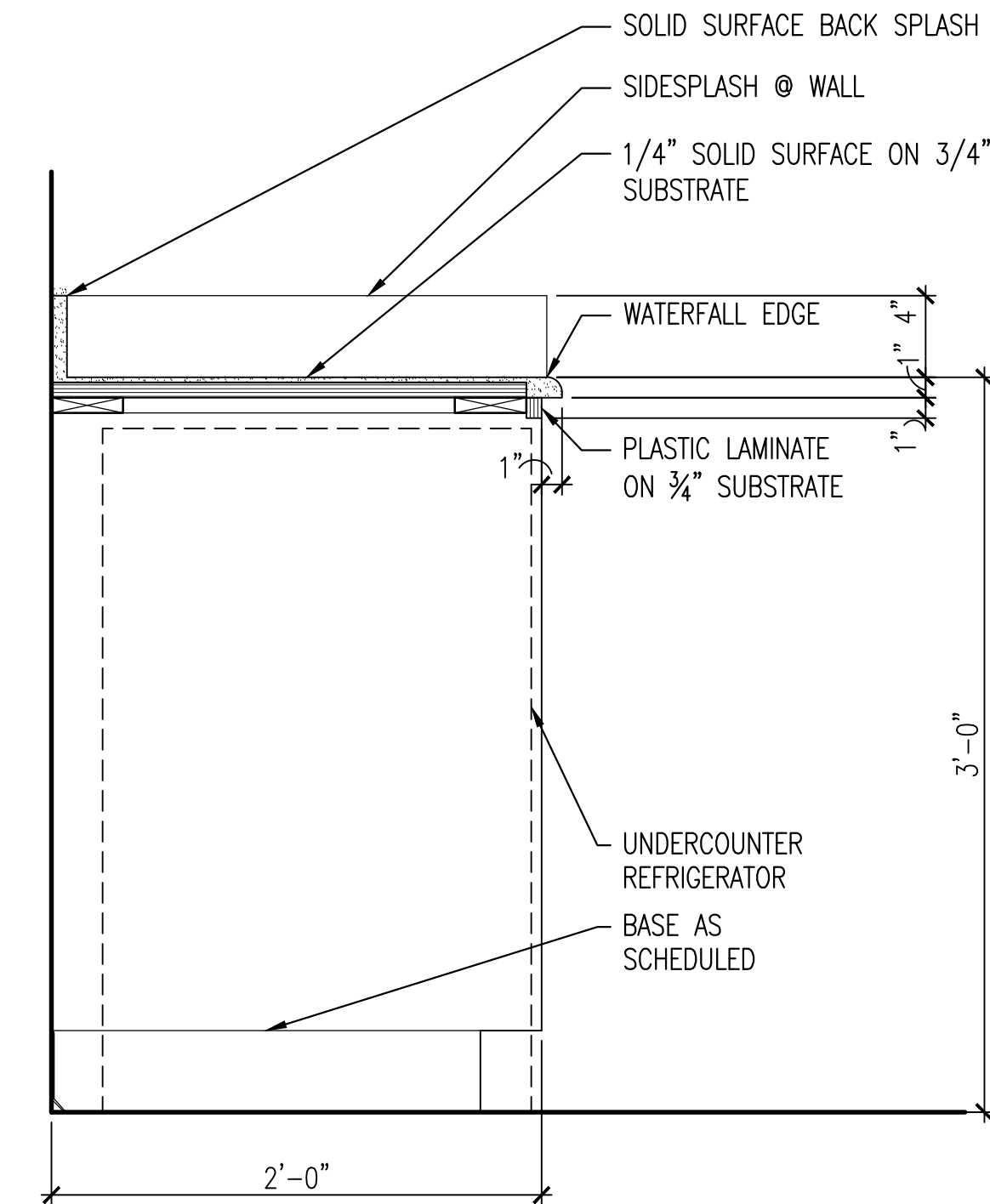
7 GLASS WALL CABINET DETAIL  
A507 1 1/2" = 1'-0"



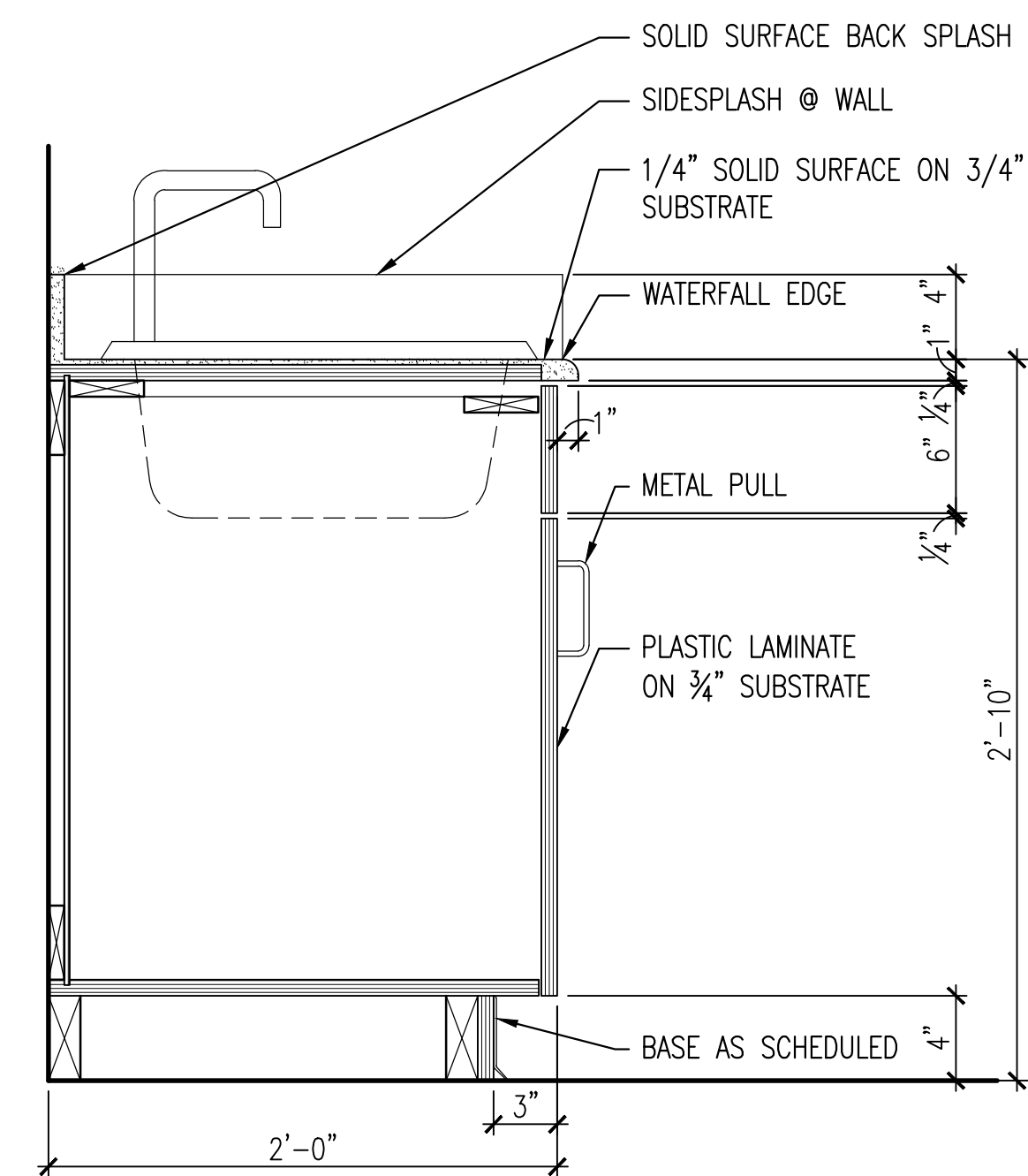
6 WALL CABINET DETAIL  
A507 1 1/2" = 1'-0"



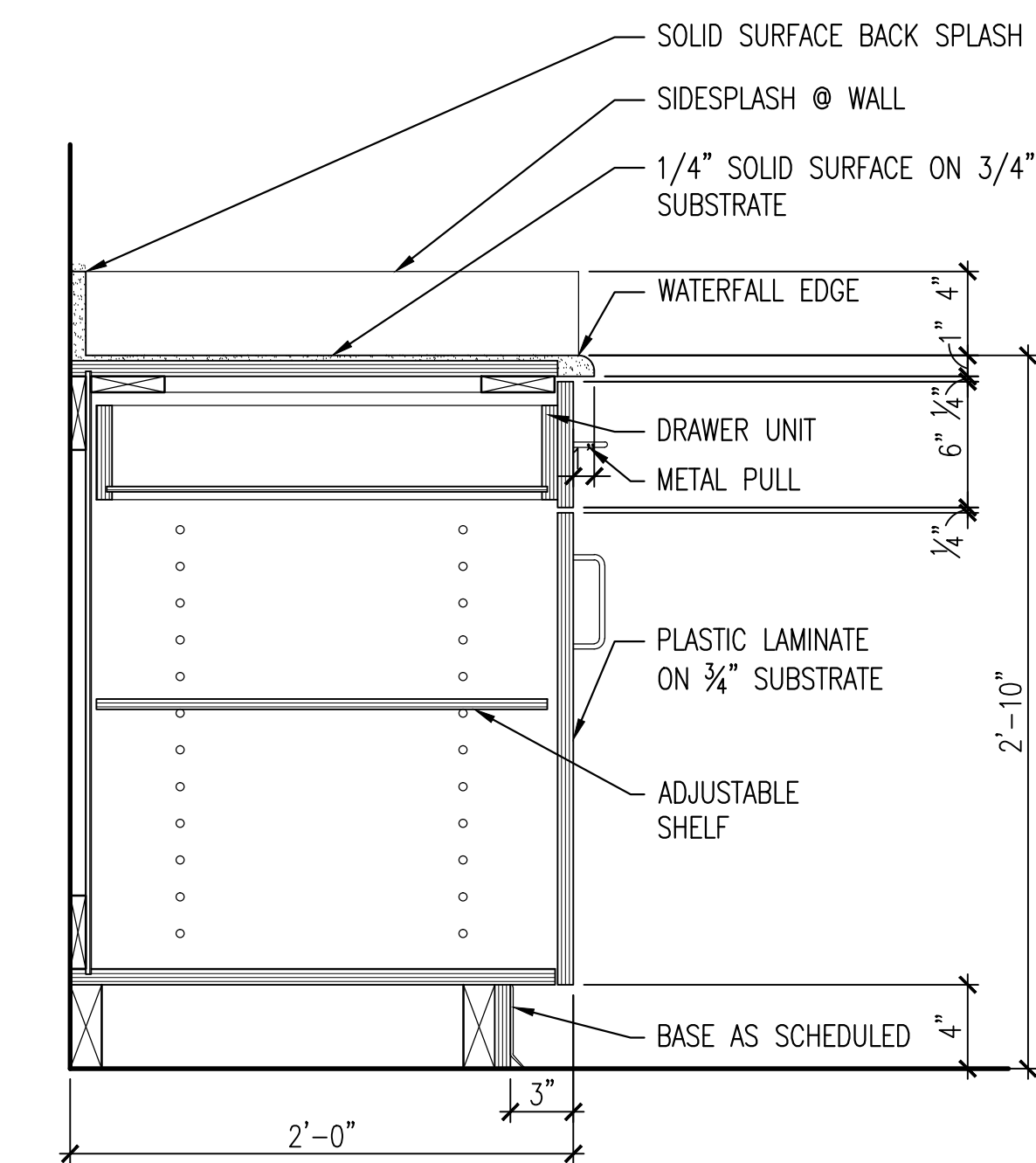
5 BENCH DETAIL  
A507 1 1/2" = 1'-0"



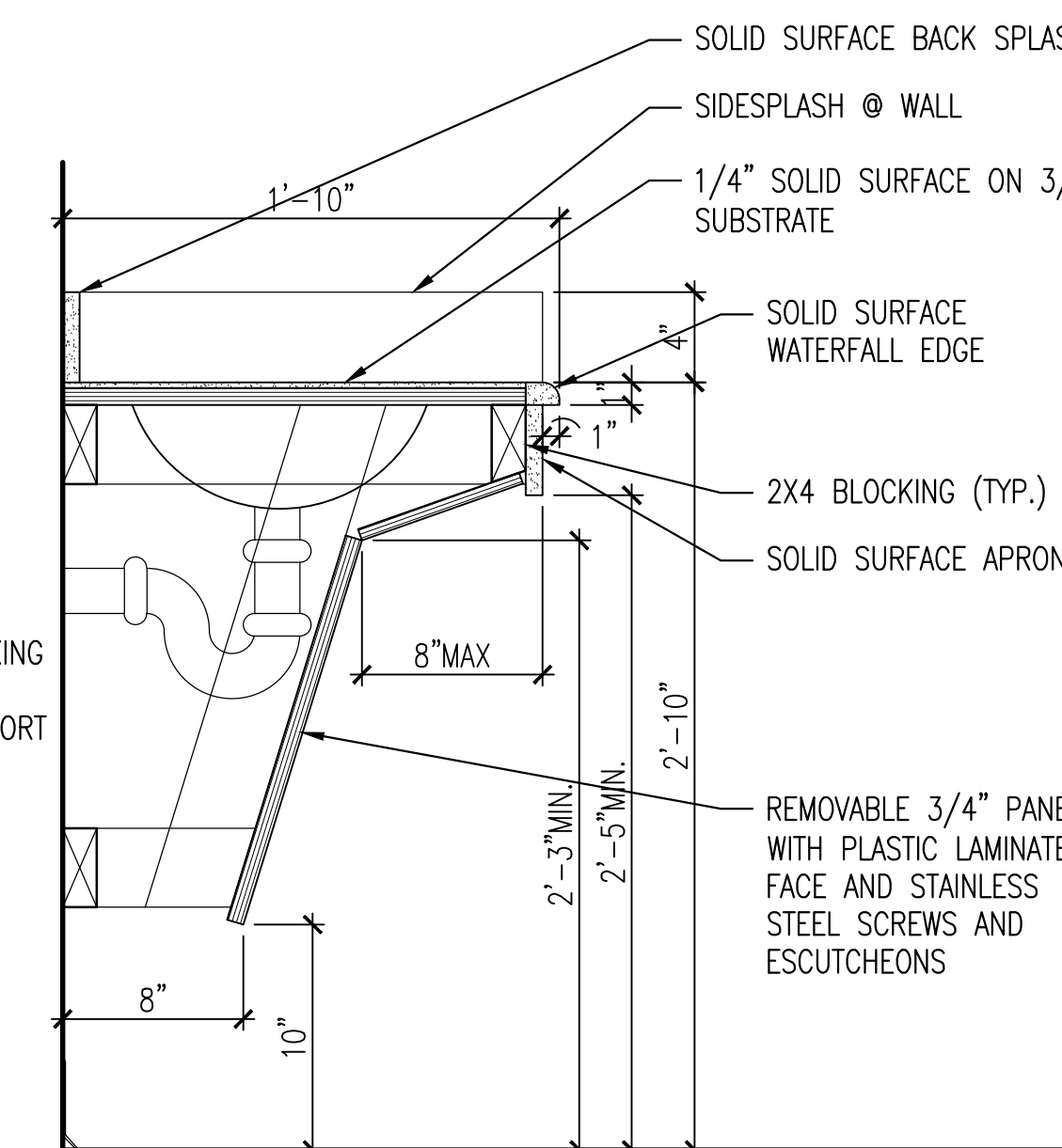
4 UNDERCOUNTER REFRIGERATOR DETAIL  
A507 1 1/2" = 1'-0"



3 KITCHEN SINK DETAIL  
A507 1 1/2" = 1'-0"

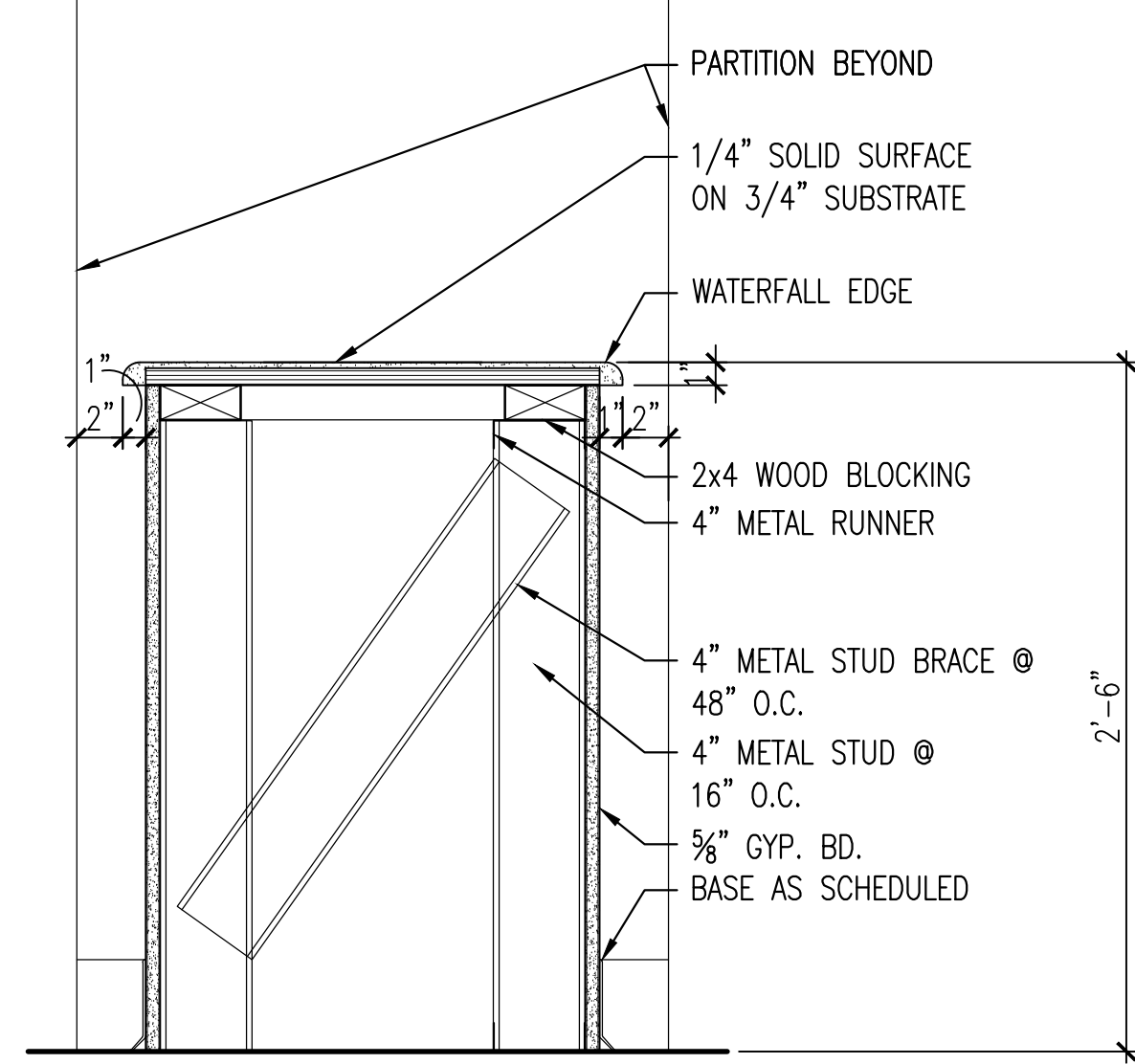


2 KITCHEN BASE DETAIL  
A507 1 1/2" = 1'-0"

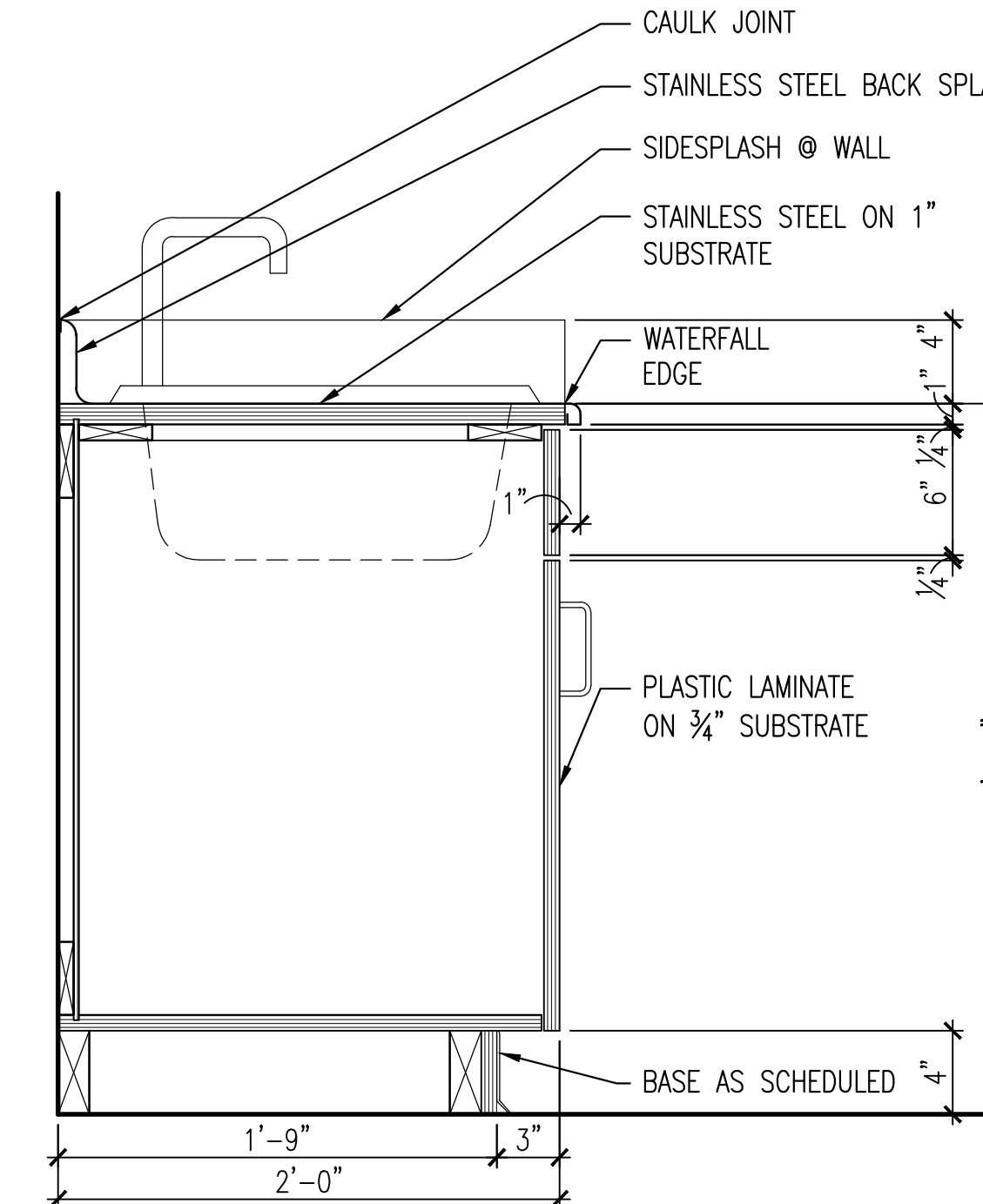


1 LAVATORY BASE DETAIL  
A507 1 1/2" = 1'-0"

NOTE:  
PROVIDE BLOCKING  
IN WALL FOR  
COUNTER SUPPORT



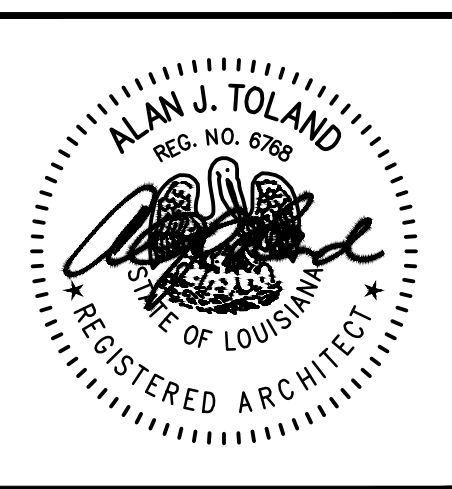
12 DIVIDER AT WAITING ROOM  
A507 1 1/2" = 1'-0"



11 STAINLESS STEEL COUNTERTOP WITH SINK  
A507 1 1/2" = 1'-0"

Revisions:	Date

CONSULTANTS:



ARCHITECT:

**TOLAND**  
**MIZELL**  
**MOLNAR**

590 Means Street NW, Suite 200  
Atlanta, GA 30318  
404.214.9774

Drawing Title:
MILLWORK DETAILS
Approved: Project Director

Project Title:
EXPAND RADIOLOGY AND SPS OVERTON BROOKS VAMC
Project Number:
667-083
Building Number:
1
Drawing Number:
A507
Date:
04-17-2015
Checked:
XX
Drawn:
XX
Dwg. of 160

FINAL SUBMITTAL

OFFICE OF  
CONSTRUCTION  
AND FACILITIES  
MANAGEMENT

VA U.S. Department of Veterans Affairs