

Drawing File: \\Projects\1313 Renovate Radiology & SPS VA Shreveport\3 1313 Drawings\RENOVATE RADIOLOGY & SPS - VA SHREVEPORT\Sheets\A601 STOREFRONT AND CURTAINWALL ELEVATIONS AND DETAILS.dwg  
Plotted by: haneed  
Date: May 20, 2015  
Scale: 1/4" = 1'-0"

A  
three inches = one foot

B  
one and one-half inches = one foot

C  
one inch = one foot

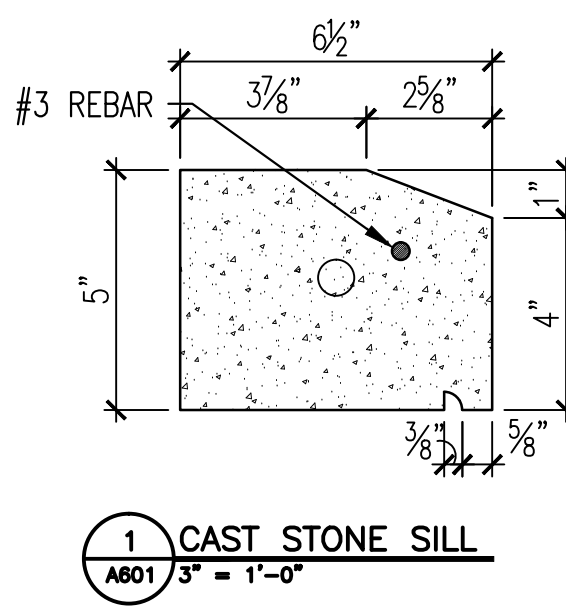
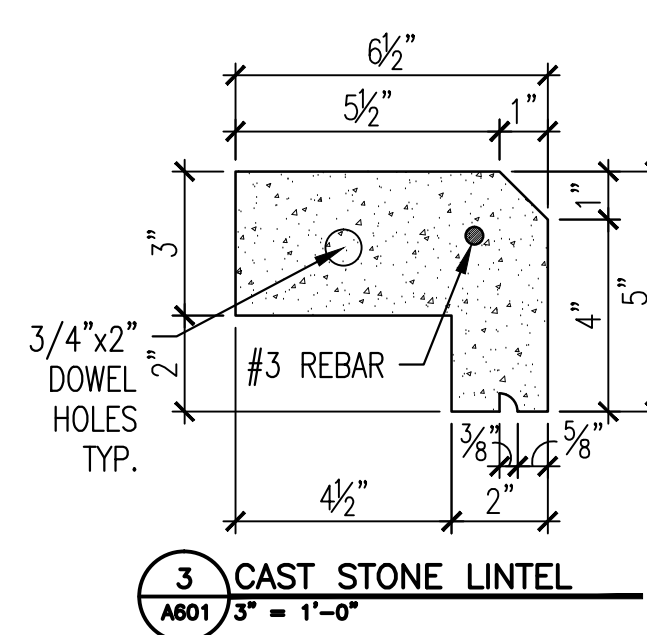
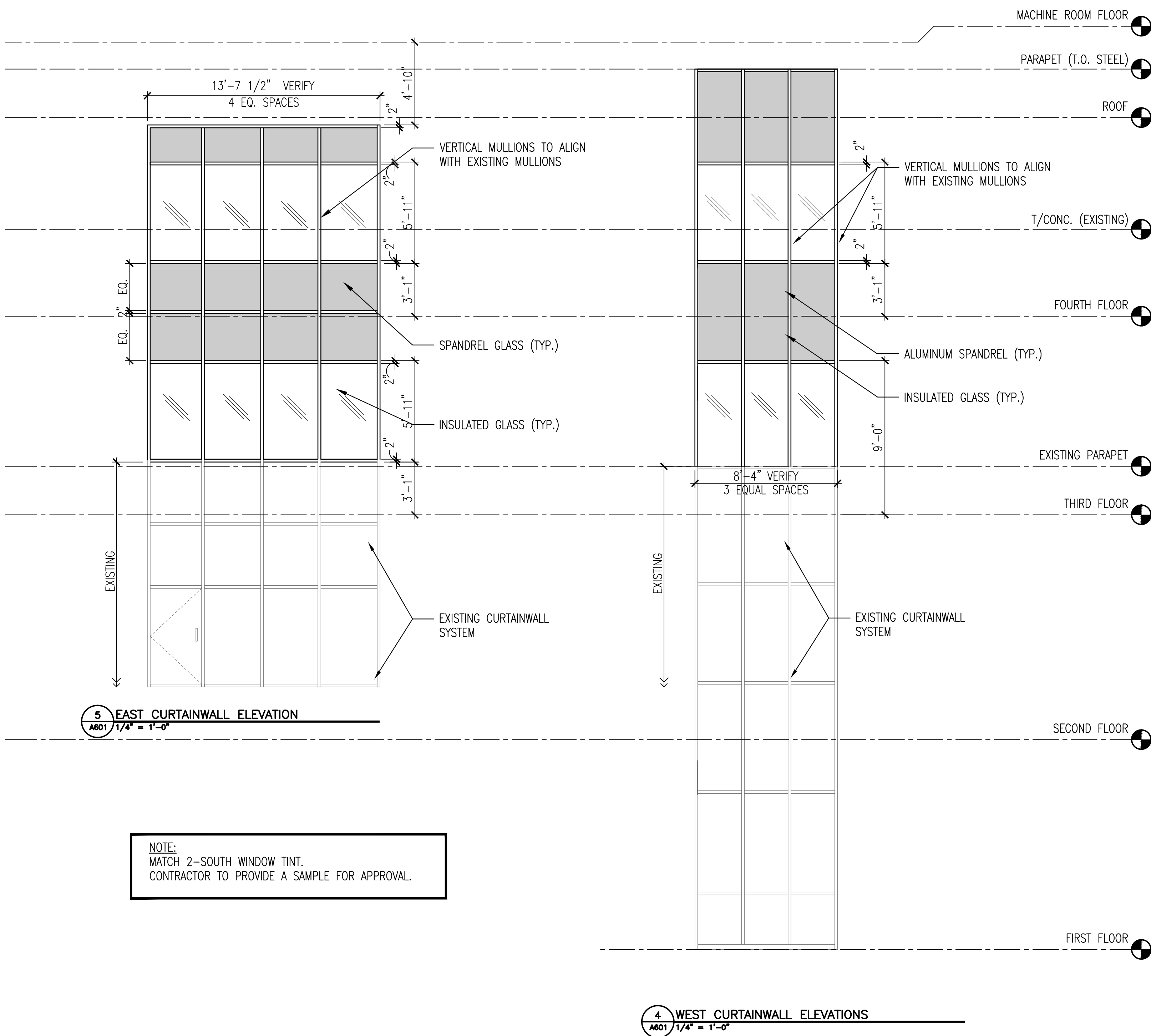
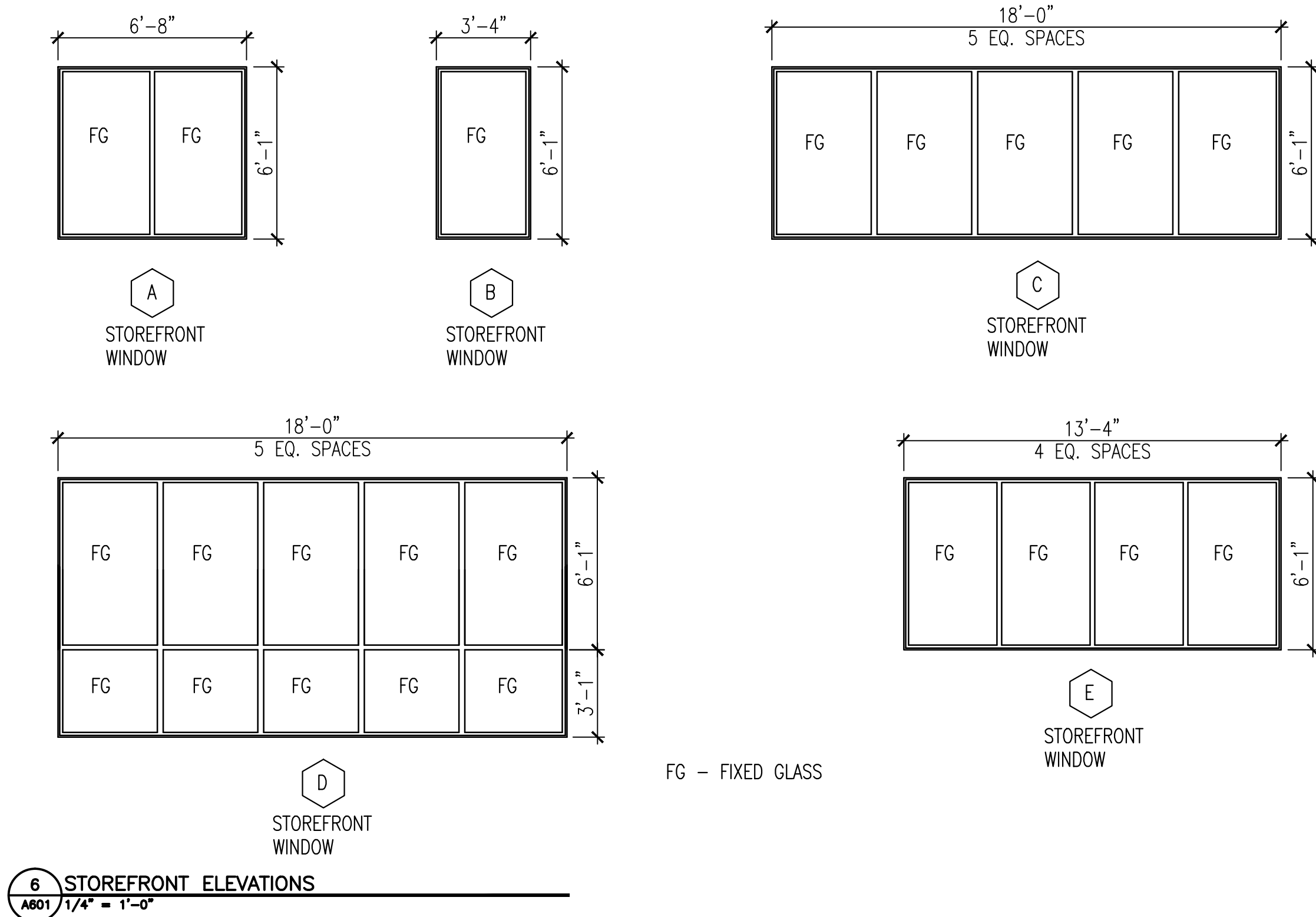
D  
three-quarters inch = one foot

E  
one-half inch = one foot

F  
three-eighths inch = one foot

G  
one-quarter inch = one foot

G  
one-eighth inch = one foot



Revisions:		Date:		CONSULTANTS:				ARCHITECT:  590 Means Street NW, Suite 200 Atlanta, GA 30318 404.214.9774		Drawing Title: STOREFRONT AND CURTAINWALL ELEVATIONS AND DETAILS		Project Title: EXPAND RADIOLOGY AND SPS OVERTON BROOKS VAMC		Project Number: 667-083		OFFICE OF CONSTRUCTION AND FACILITIES MANAGEMENT  U.S. Department of Veterans Affairs	
								Approved: Project Director		Location: SHREVEPORT, LA		Building Number: 1		Drawing Number: A601			
										Date: 04-17-2015		Checked: XX		Dwg. 52 of 160			