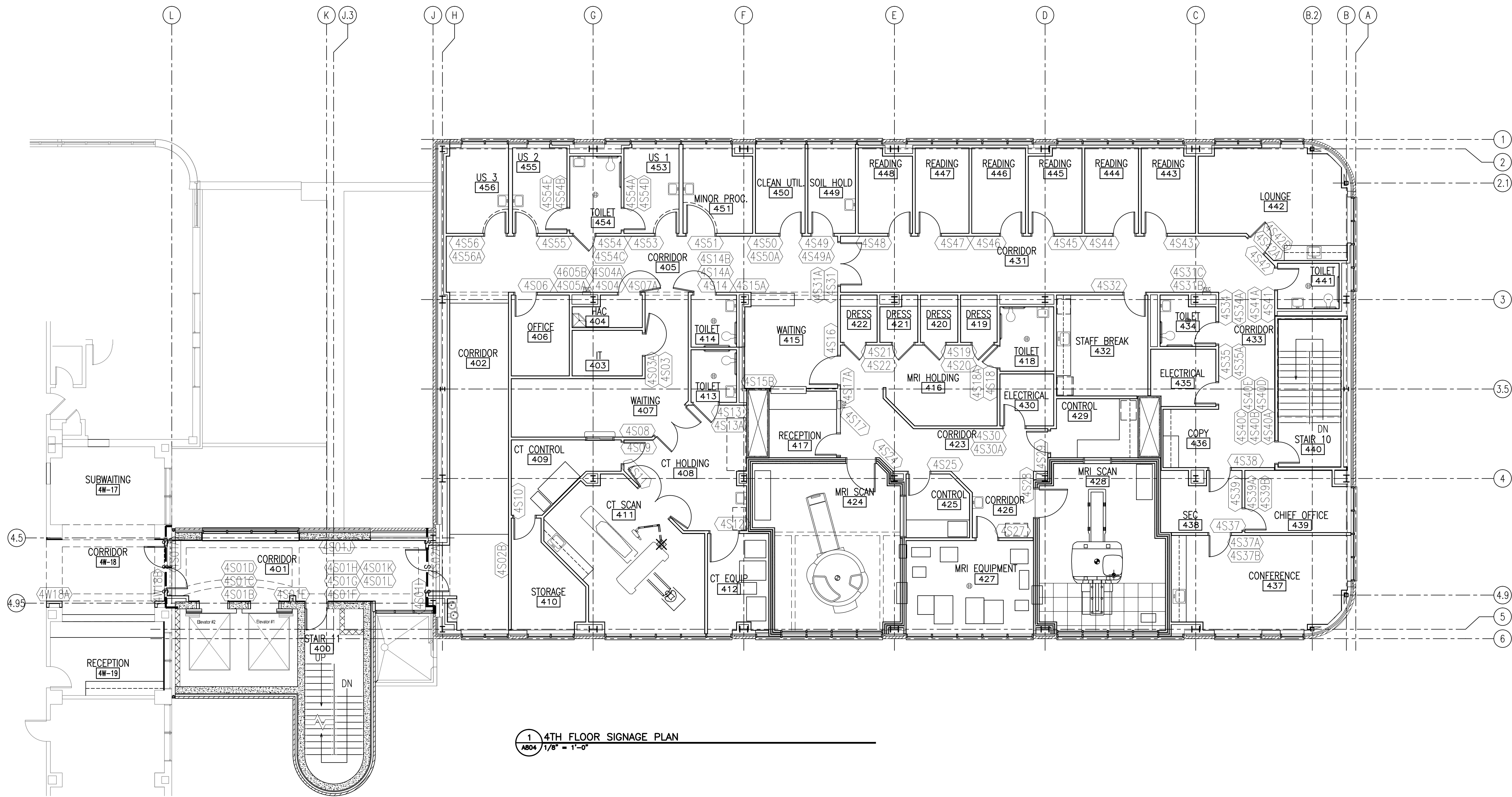


Drawing File: \\Projects\1313 Renovate Radiology & SPS - VA Shreveport\3 1313 Drawings\RENOVATE RADIOLOGY & SPS - VA SHREVEPORT\Sheets\A804 4TH FLOOR SIGNAGE PLAN.dwg  
Plotted by: haneed  
Plotted Date: May 20, 2015 4:42pm

A three inches = one foot  
B one and one-half inches = one foot  
C one inch = one foot  
D three-quarters inch = one foot  
E one-half inch = one foot  
F three-eighths inch = one foot  
G one-quarter inch = one foot



A  
B  
C  
D  
E  
F  
G

Revisions:	Date

CONSULTANTS:



ARCHITECT:

**TOLAND**  
**MIZELL**  
**MOLNAR**

590 Means Street NW, Suite 200  
Atlanta, GA 30318  
404.214.9774

Drawing Title:
4TH FLOOR SIGNAGE PLAN
Approved: Project Director

Project Title:
EXPAND RADIOLOGY AND SPS OVERTON BROOKS VAMC
Location:
SHREVEPORT, LA
Date:
04-17-2015
Checked:
XX
Drawn:
XX

Project Number:
667-083
Building Number:
1
Drawing Number:
A804
Dwg. 58 of 160

FINAL SUBMITTAL

OFFICE OF  
CONSTRUCTION  
AND FACILITIES  
MANAGEMENT

VA U.S. Department  
of Veterans Affairs