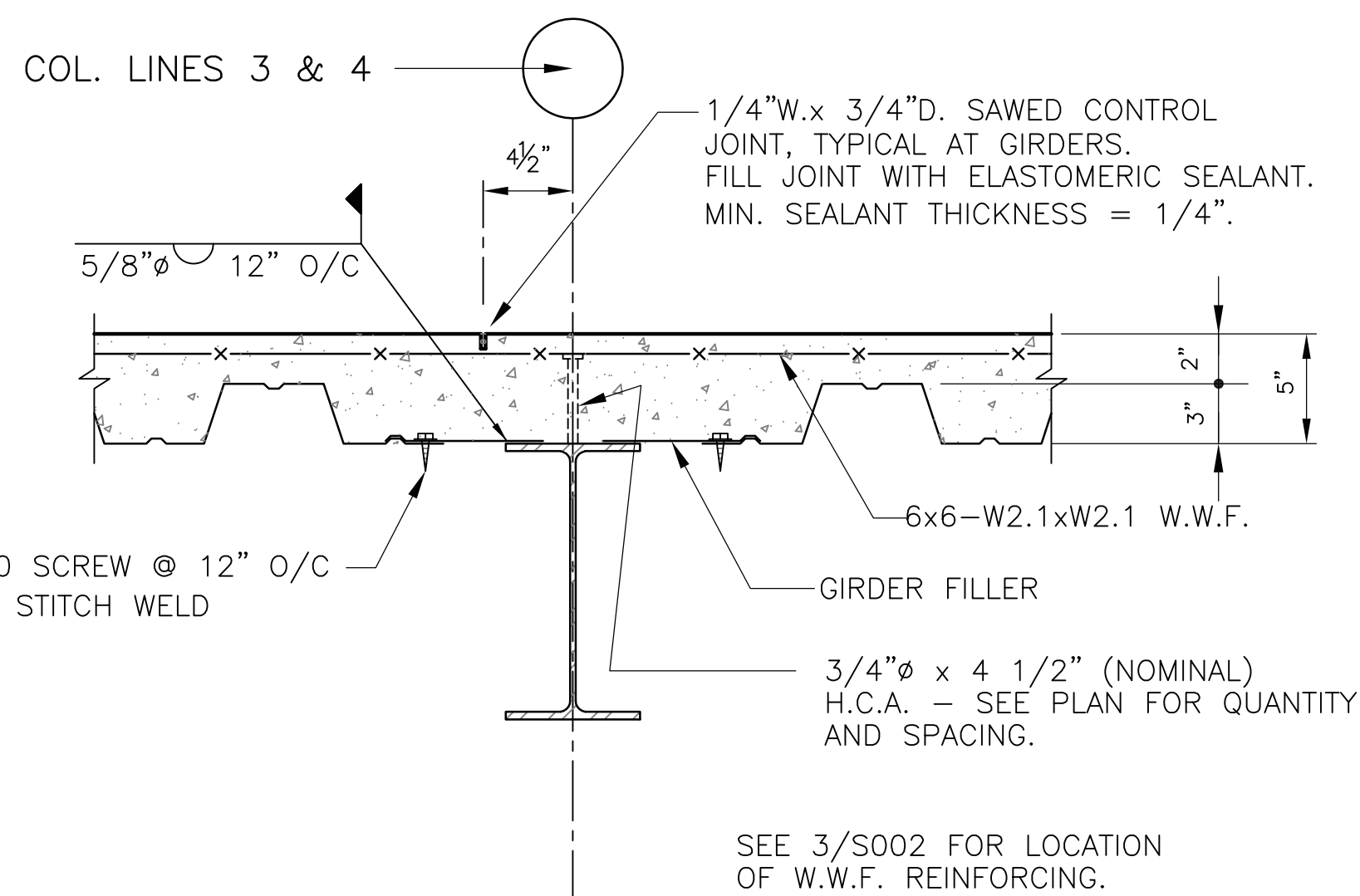
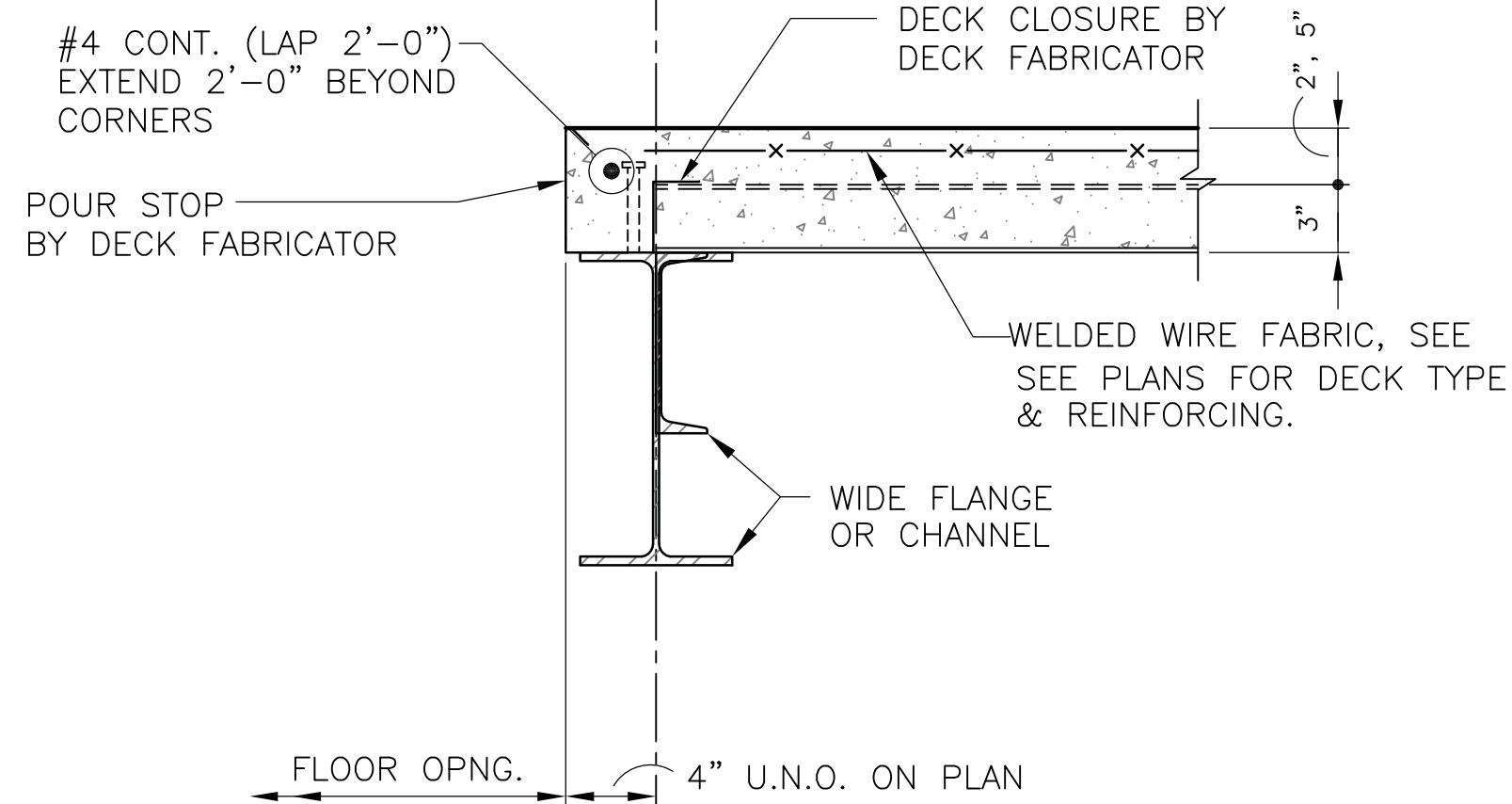


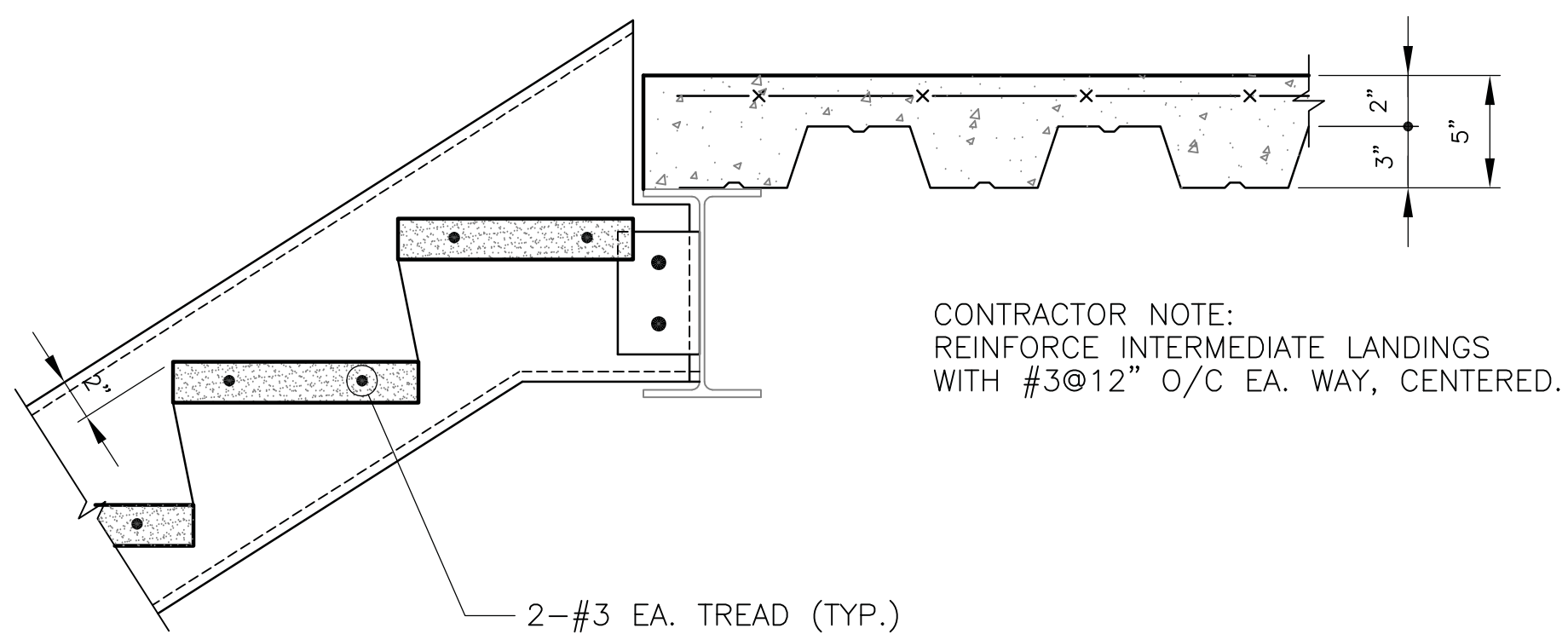
Drawing File: W:\3 Clients-Projects\3-Toland-Mizell-Molnar\2014-012 VA SHREVEPORT-EXPAND RADIOLOGY\DRAWINGS\STRUC\S002.dwg
Plotted by: ashy
Plotted Date: Mar 11, 2015 7:08pm
one-eighth inch = one foot
one-quarter inch = one foot
one-half inch = one foot
three-eighths inch = one foot
one inch = one foot
one and one-half inches = one foot
three inches = one foot



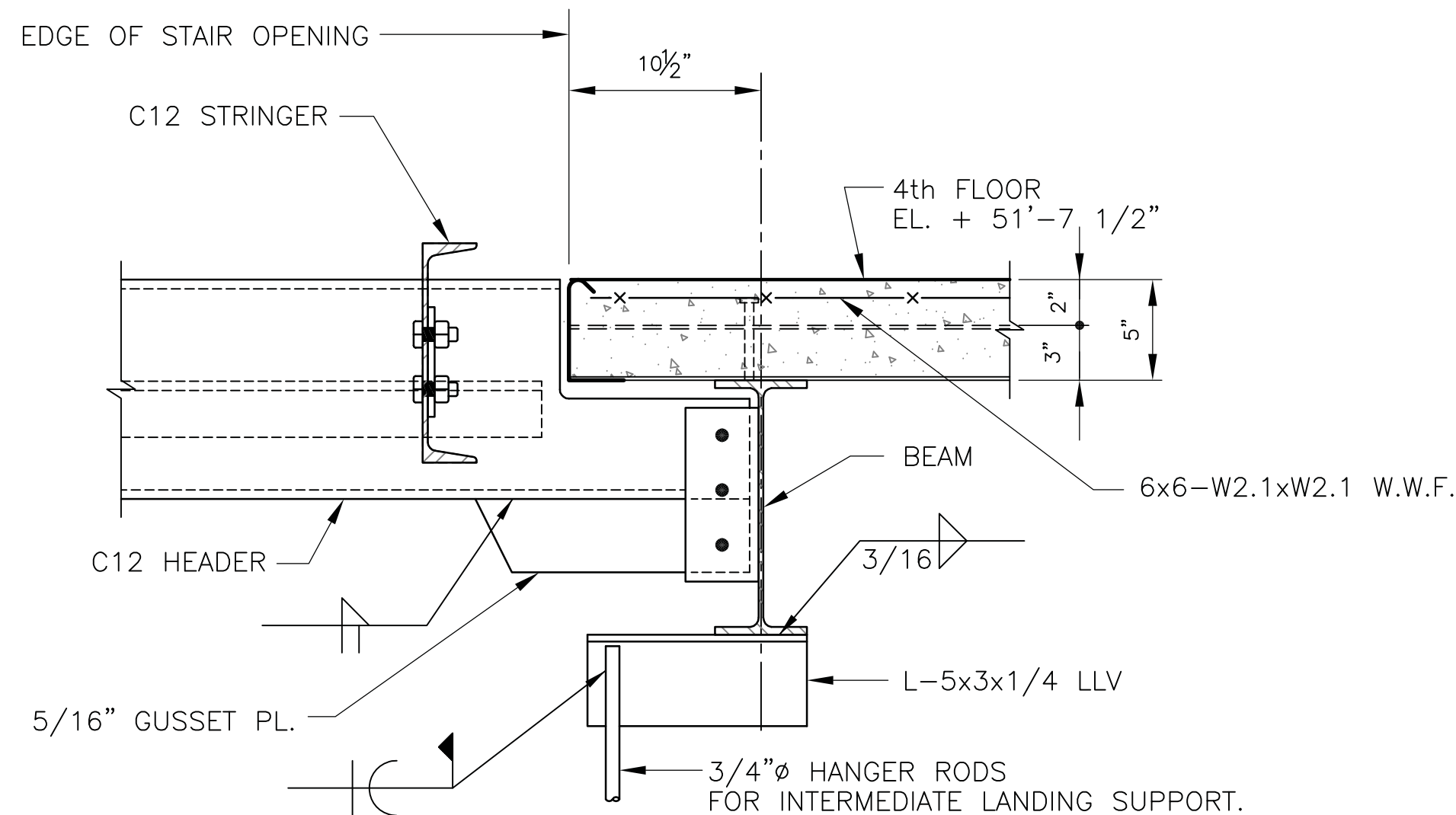
TYPICAL DETAIL AT FLOOR GIRDERS 1
1 1/2"=1'-0" S002



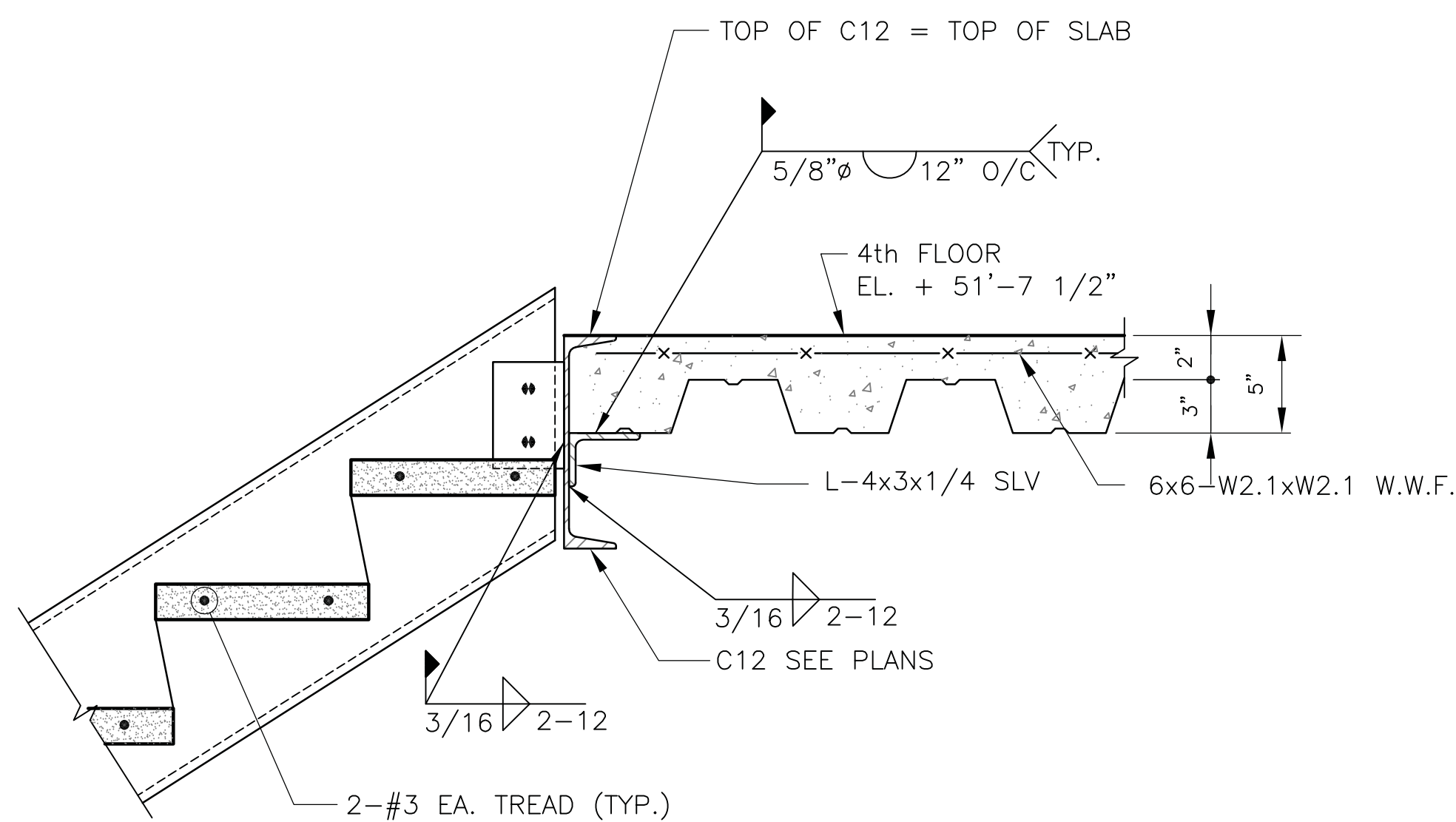
TYPICAL SECTION AT FLOOR OPENINGS 2
1 1/2"=1'-0" S002



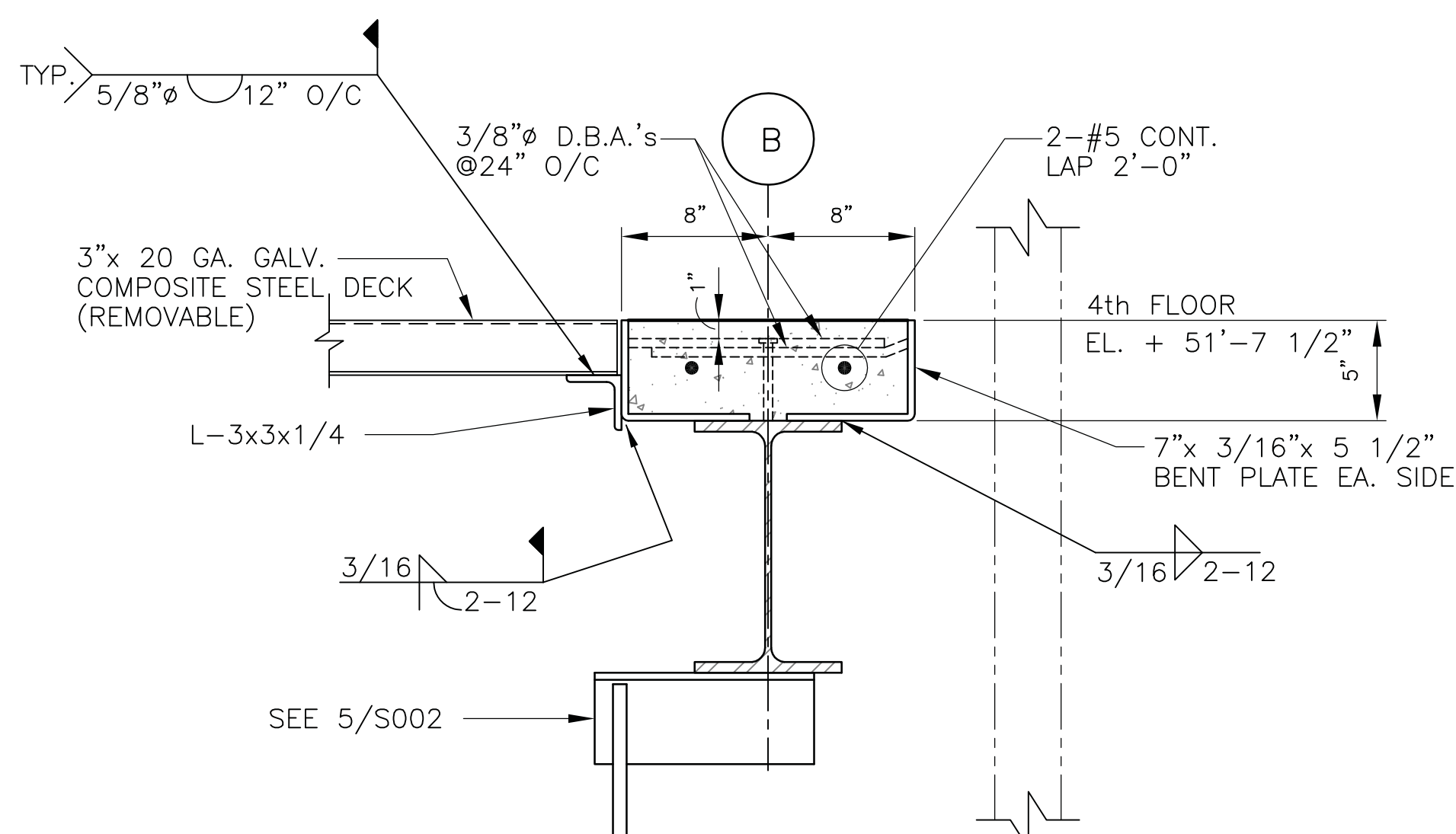
SECTION AT STAIR STRINGERS 4
1 1/2"=1'-0" S002



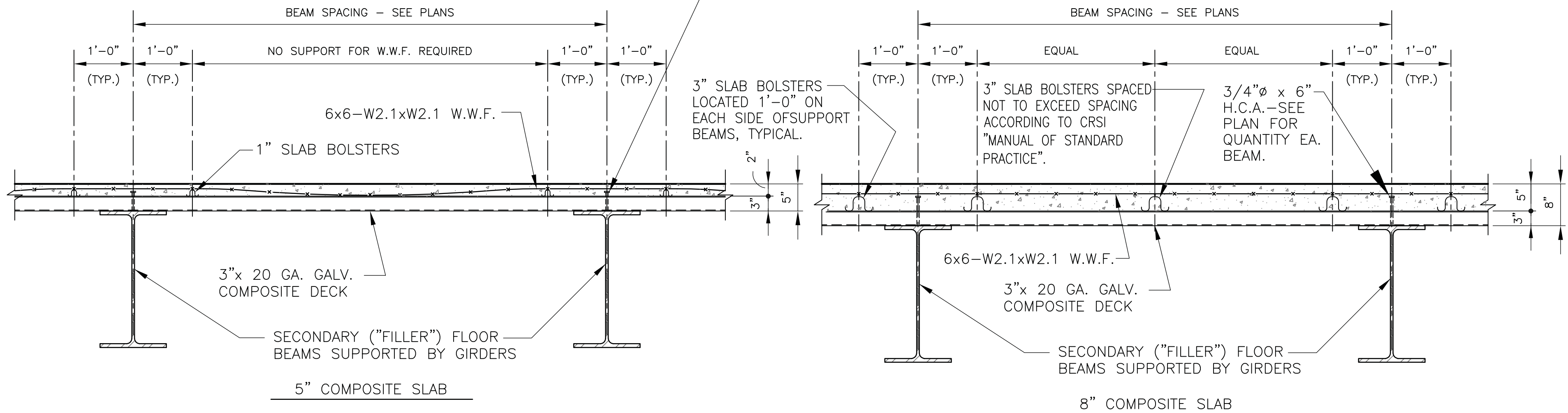
SECTION 5
1 1/2"=1'-0" S002



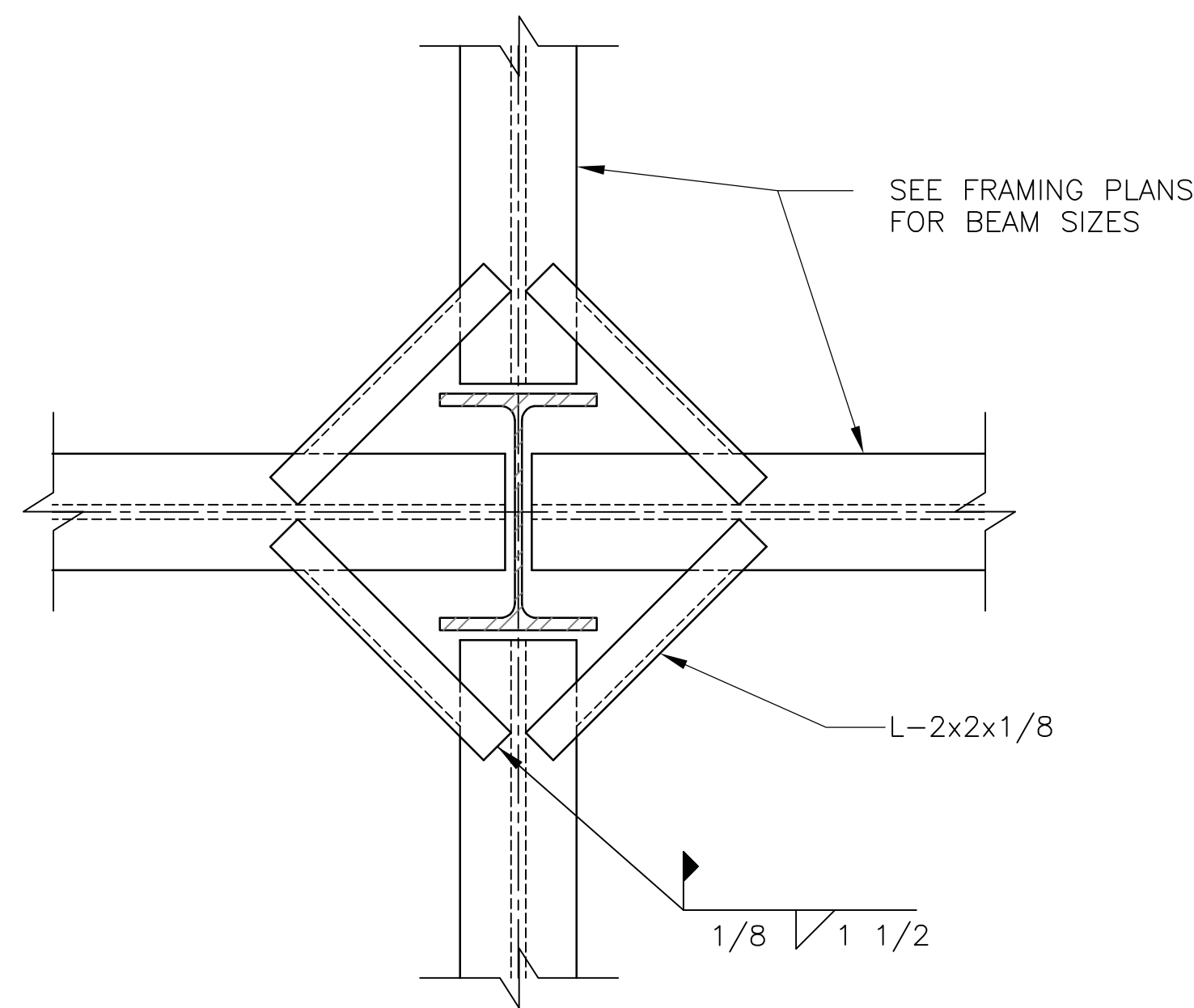
SECTION AT STAIR STRINGERS 7
1 1/2"=1'-0" S002



SECTION 8
1 1/2"=1'-0" S002



TYPICAL PLACEMENT OF COMPOSITE SLAB REINFORCING 3
NO SCALE S002



TYPICAL FLOOR DECK SUPPORT DETAIL AT COLUMNS 6
NO SCALE S002

Revisions:	Date

CONSULTANTS:

PADGETT
Engineering Group
Consulting Structural Engineers
2285 CUMBERLAND PARKWAY - SUITE 1910 - ATLANTA - GEORGIA 30339

LOUISIANA C.O.A. 4674

3/11/15

ARCHITECT:

TOLAND MIZELL MOLNAR

590 Means Street NW, Suite 200
Atlanta, GA 30318
404.214.9774

Drawing Title:

TYPICAL DETAILS

Approved: Project Director

Project Title:

EXPAND RADIOLOGY AND SPS
OVERTON BROOKS VAMC

Location:

SHREVEPORT, LA

Date:

3-13-2015

Checked:

BP

Drawn:

AH

Project Number:

667-083

Building Number:

1

Drawing Number:

S002

Dwg. of XX

FINAL SUBMITTAL

OFFICE OF
CONSTRUCTION
AND FACILITIES
MANAGEMENT

VA U.S. Department of Veterans Affairs