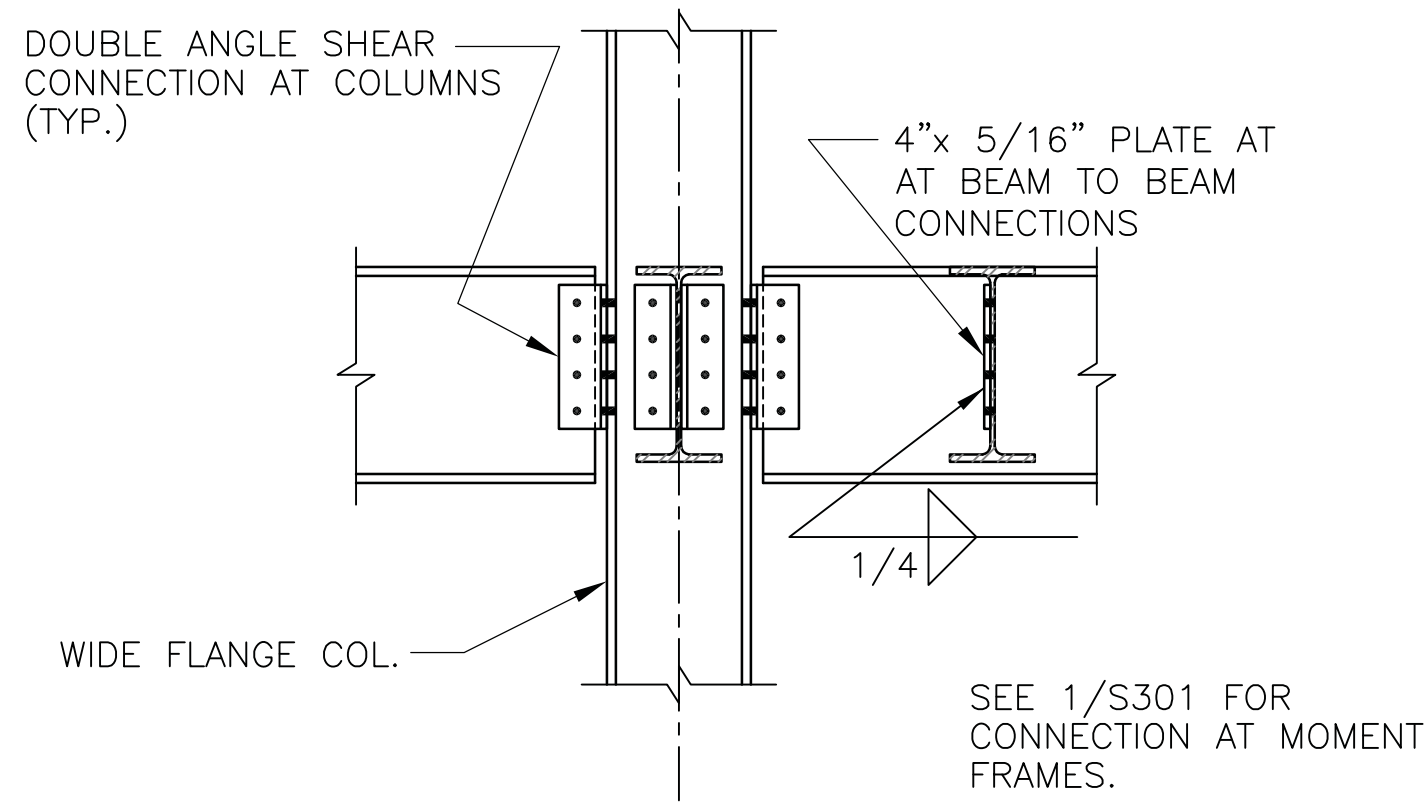
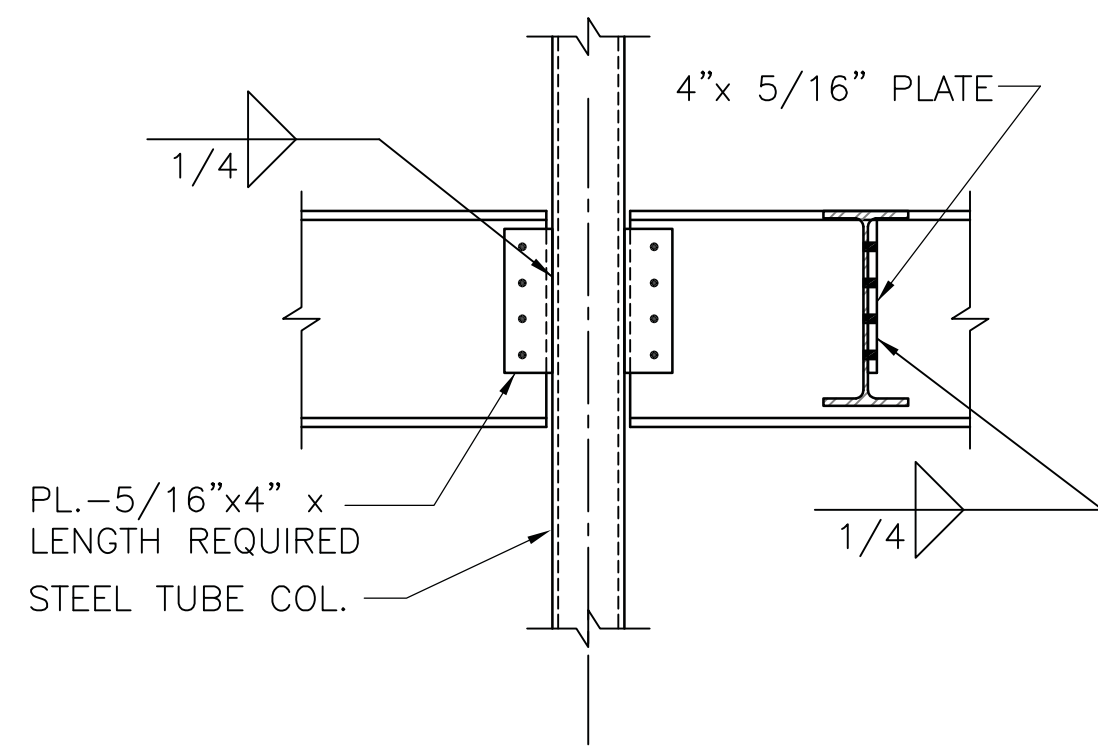


Drawing File: W13 Clients-Projects\2-Toland-Mizell-Molnar\2014-012 VA SHREVEPORT-EXPAND RADIOLOGY\DRAWINGS\STRUC\S003.dwg
Plotted by: caddy
Plotted Date: Mar 11, 2015 7:08pm
one-eighth inch = one foot



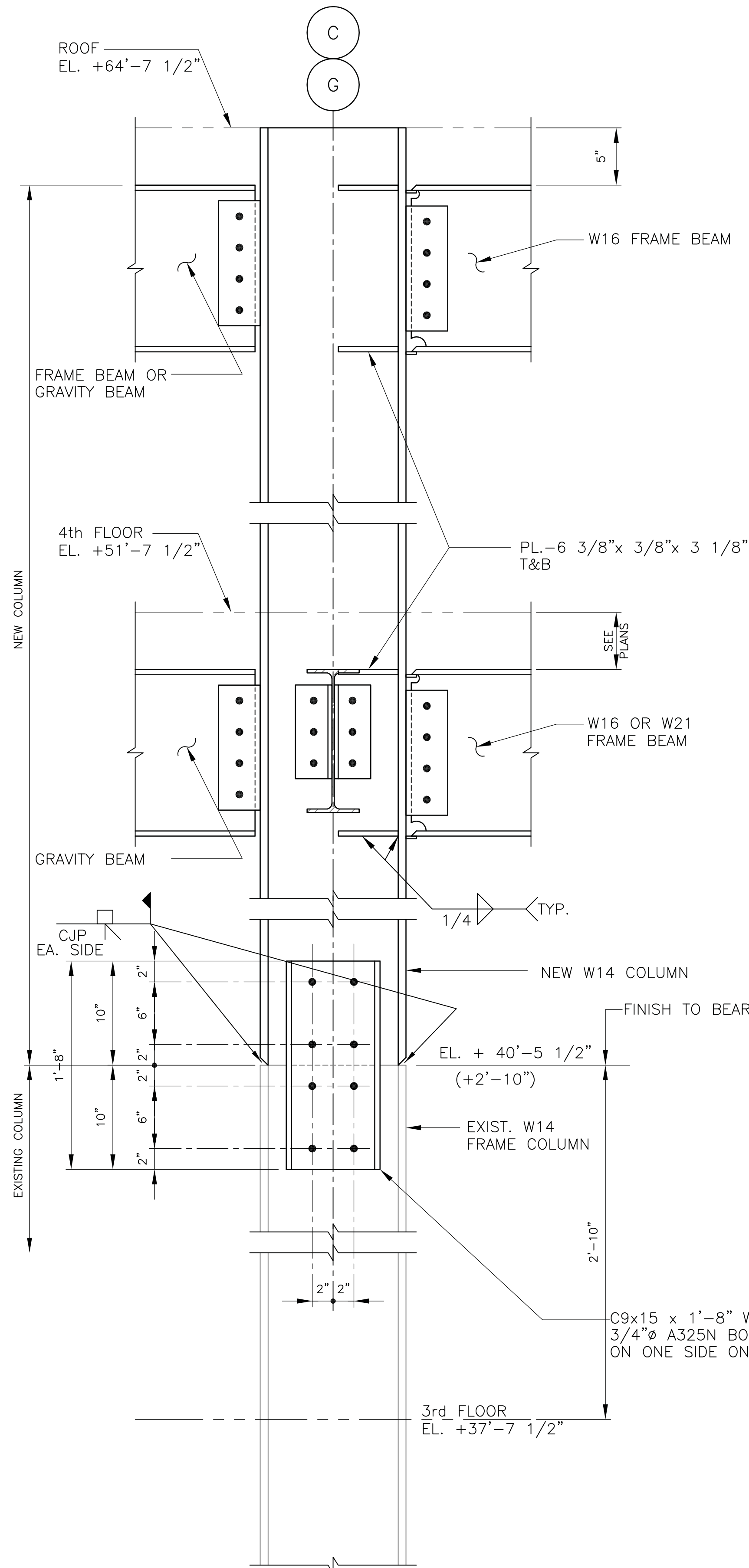
BOLT SCHEDULE	
BEAM DEPTH	NO. OF 3/4" DIA. A325 BOLTS IN EA. VERT. ROW
8"	2
10"	2
12"	3
14"	3
16"	4
18"	4
21"	5
24"	6

NOTE: THE NUMBER OF BOLTS SHOWN ARE MINIMUM FOR BEAM DEPTHS INDICATED.

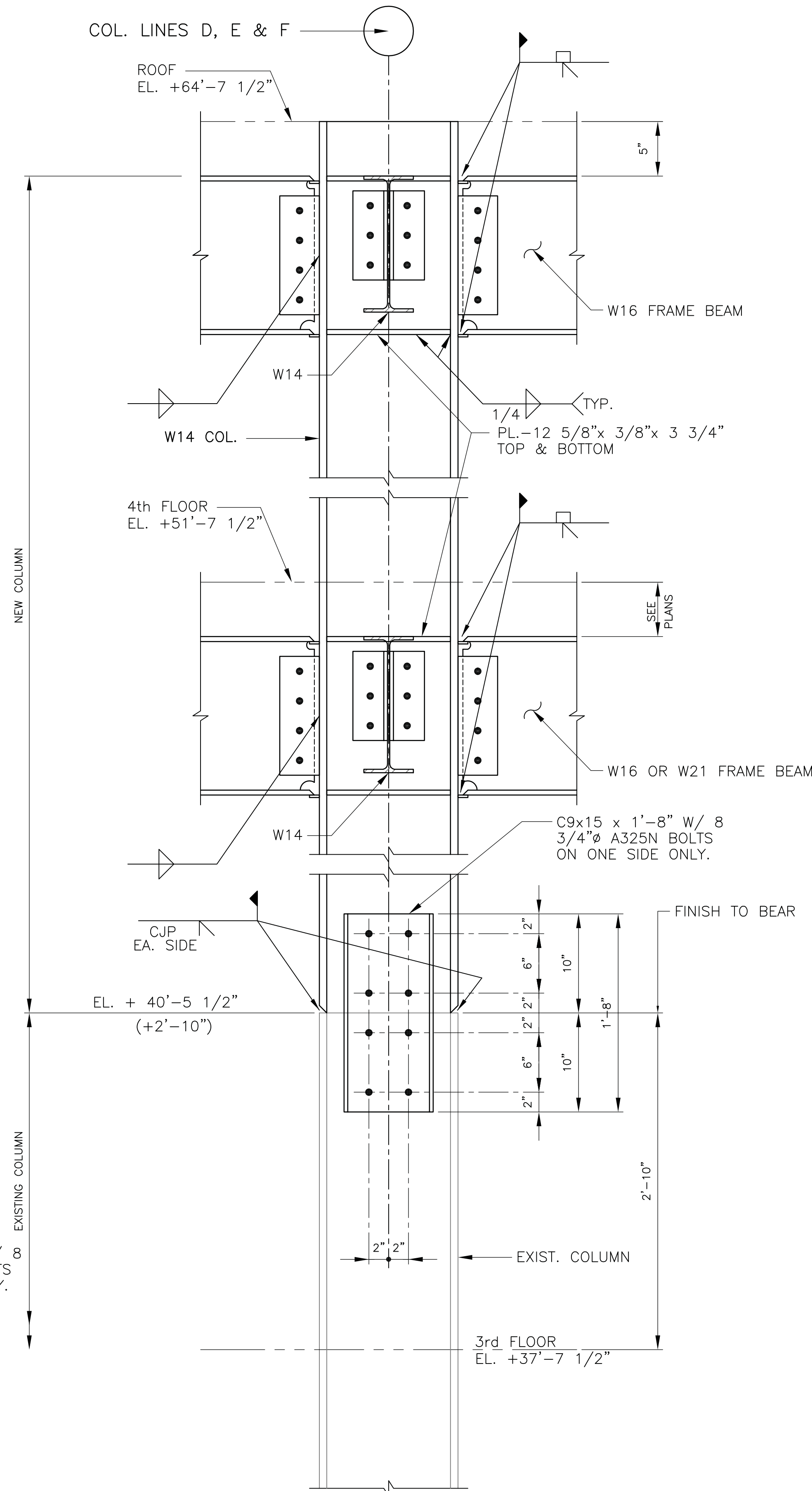


TYPICAL CONNECTION DETAIL
NO SCALE

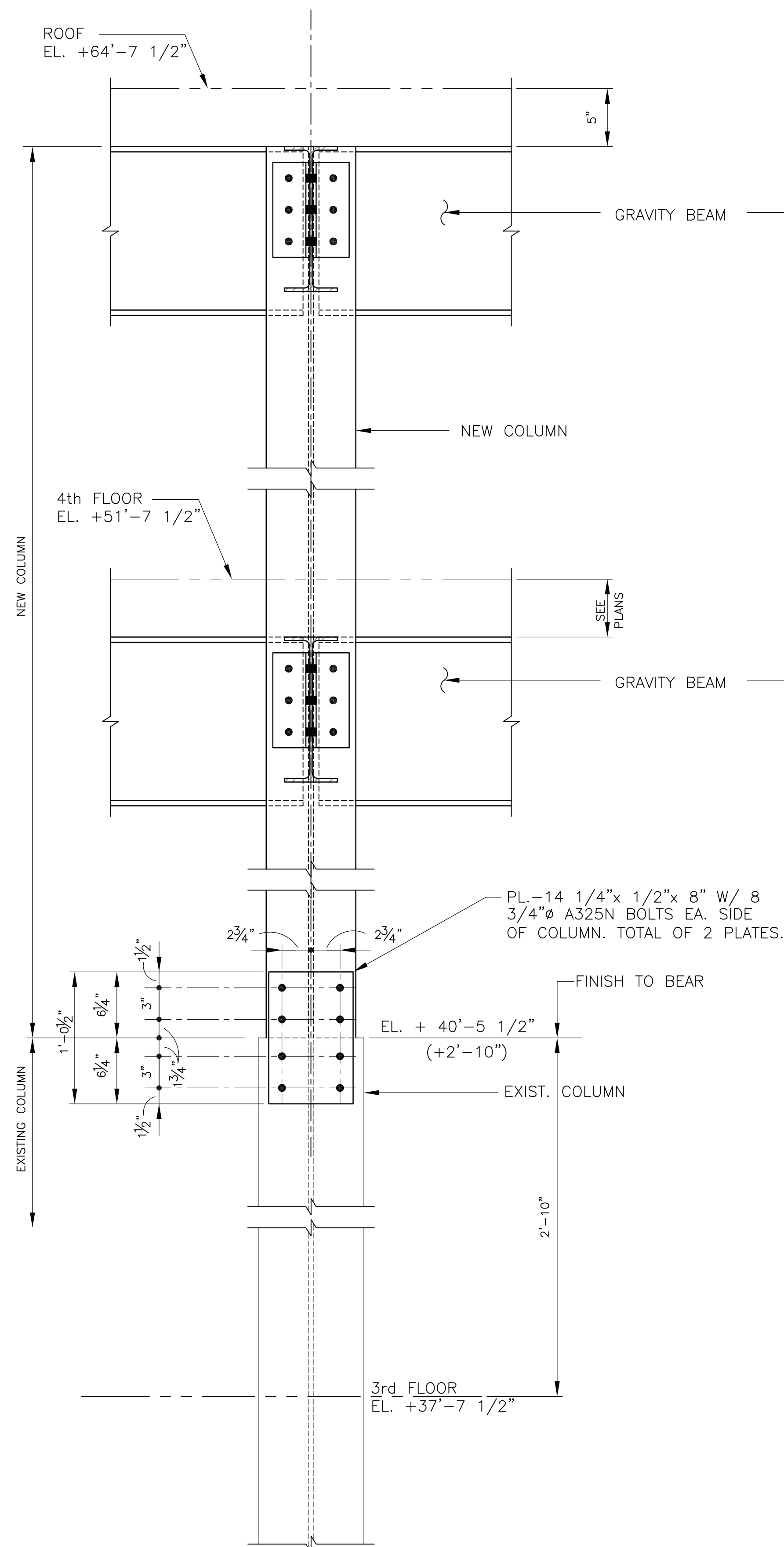
TYPICAL CONNECTION DETAIL
NO SCALE



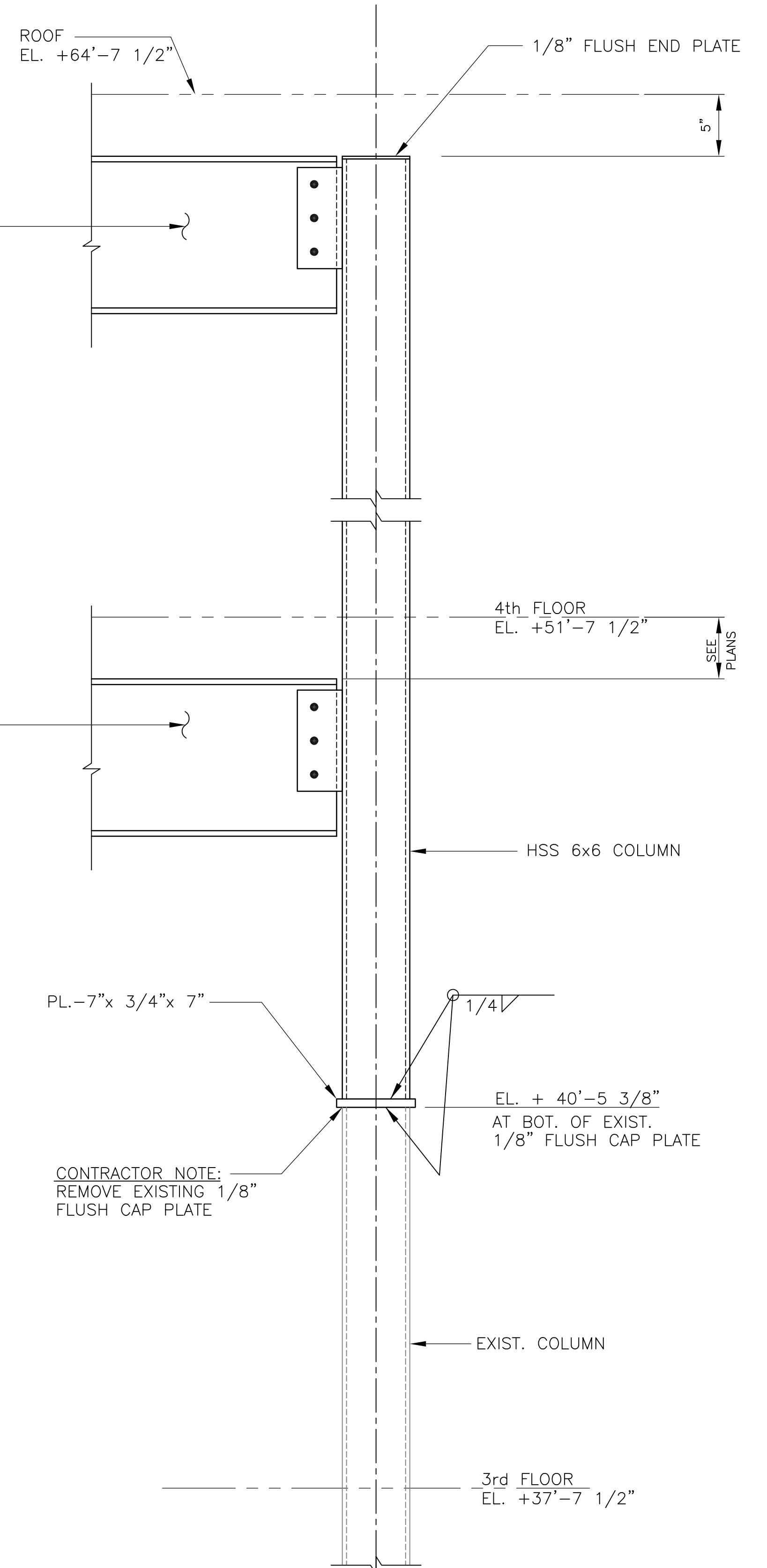
TYPICAL W14 COLUMN SPLICE DETAIL
1 1/2"=1'-0" COLUMNS C-2, C-5, G-2 & G-5



SECTION
1 1/2"=1'-0"



TYPICAL GRAVITY COLUMN SPLICE DETAIL
1 1/2"=1'-0" AT ALL WIDE FLANGE COLUMNS EXCEPT AT RIGID FRAMES
COLUMNS ON GRID LINES 2, 3, 4 & 5



TYPICAL HSS COLUMN SPLICE DETAIL
1 1/2"=1'-0"

Revisions:		CONSULTANTS:		ARCHITECT:		Drawing Title:		Project Title:		Project Number:		OFFICE OF CONSTRUCTION AND FACILITIES MANAGEMENT VA			
		 PADGETT Engineering Group Consulting Structural Engineers 2255 CUMBERLAND PARKWAY - SUITE 1910 - ATLANTA - GEORGIA 30339		 TOLAND MIZELL MOLNAR 590 Means Street NW, Suite 200 Atlanta, GA 30318 404.214.9774		TYPICAL DETAILS		EXPAND RADIOLOGY AND SPS OVERTON BROOKS VAMC		667-083					
Date:		Date:		Date:		Approved: Project Director		Location:		Building Number:					
3-13-2015		BP		AH				SHREVEPORT, LA		1					
								Date:		Drawing Number:					
								3-13-2015		S003					
								Checked:		Dwg. of XX					
								BP							
								AH							